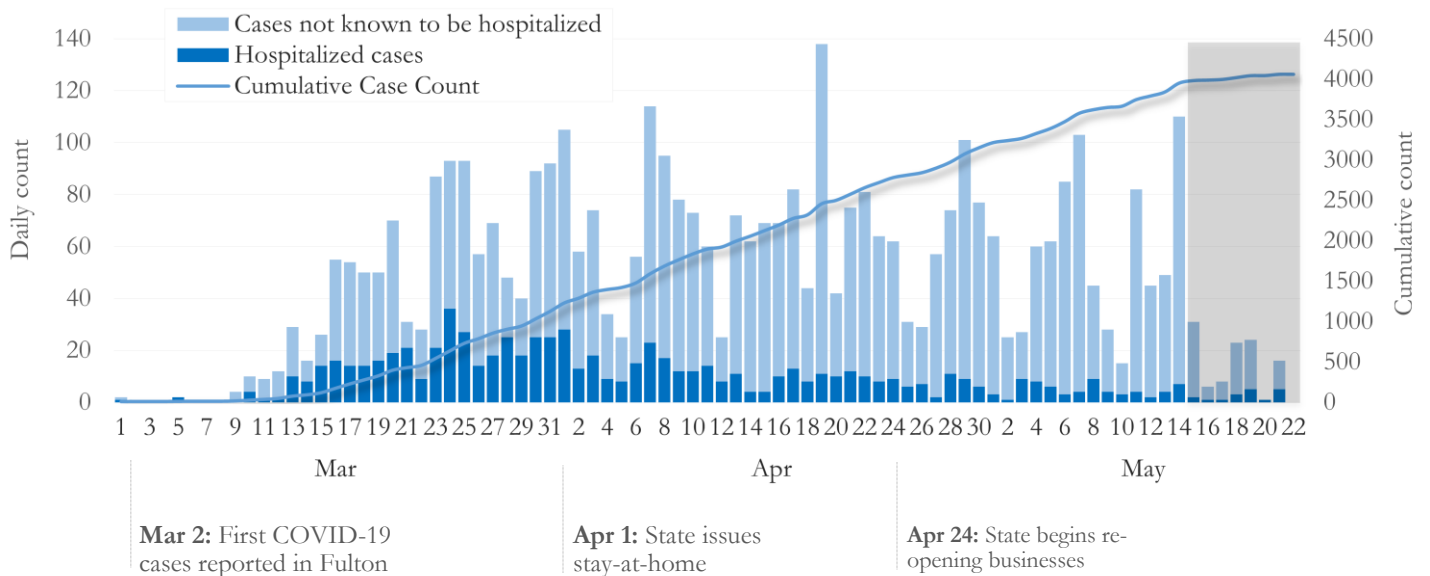


## SUMMARY

- As of May 22, 2020, Fulton County has recorded **4,060** cases of the 2019 novel coronavirus (COVID-19) and **193** deaths.
- The central portion of the county (Atlanta metro) accounts for 45% of the cumulative case count while the northern and southern parts of the county together account for 43% of the COVID-19 cumulative case count in the county.
- By city, cumulative COVID-19 diagnoses rates range from 126.7 per 100,000 persons (Johns Creek) to 739.5 per 100,000 persons (Union City).
- Among all persons diagnosed with COVID-19 in Fulton County, 19% have needed hospitalization and 4.8% have died.

**Daily and Cumulative COVID-19 diagnoses in Fulton County, GA (5/22/20)**



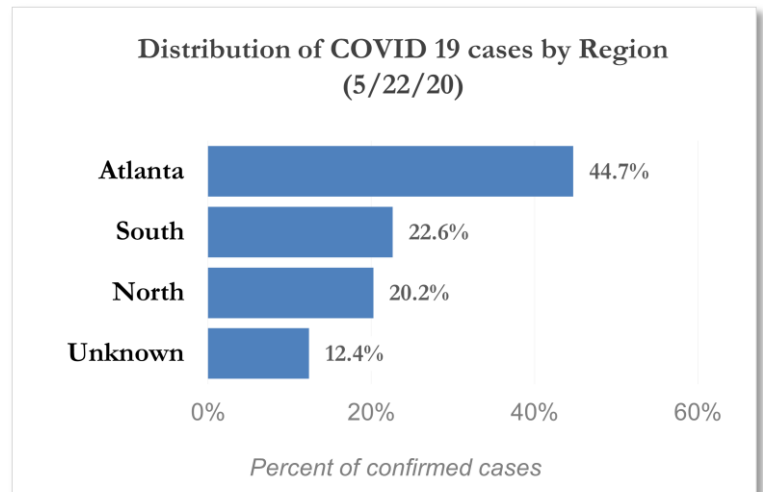
\*Counts shown reflect the number of confirmed cases as of 5/22/20 using the date of first positive sample collection. Where date of sample collection was not available or missing, the date of report creation in GA SENDSS was used instead. **Note:** All data reported are preliminary and subject to change. Delays in data reporting may cause changes in data counts, particularly in the shaded portion.

## DISTRIBUTION OF COVID-19 DIAGNOSES BY REGION

Fulton Region	% of total cases in Fulton county
Atlanta	44.7%
North <sup>1</sup>	20.2%
South <sup>2</sup>	22.6%
Unincorporated/Unknown	12.4%

<sup>1</sup>Includes all Fulton County cities north of Atlanta metro (Alpharetta, Milton, Johns Creek, Roswell, Sandy Springs, Mountain Park)

<sup>2</sup>Includes all cities south of Atlanta (College Park, Chattahoochee Hills, East Point, Hapeville, Palmetto, South Fulton, Fairburn, Union City)

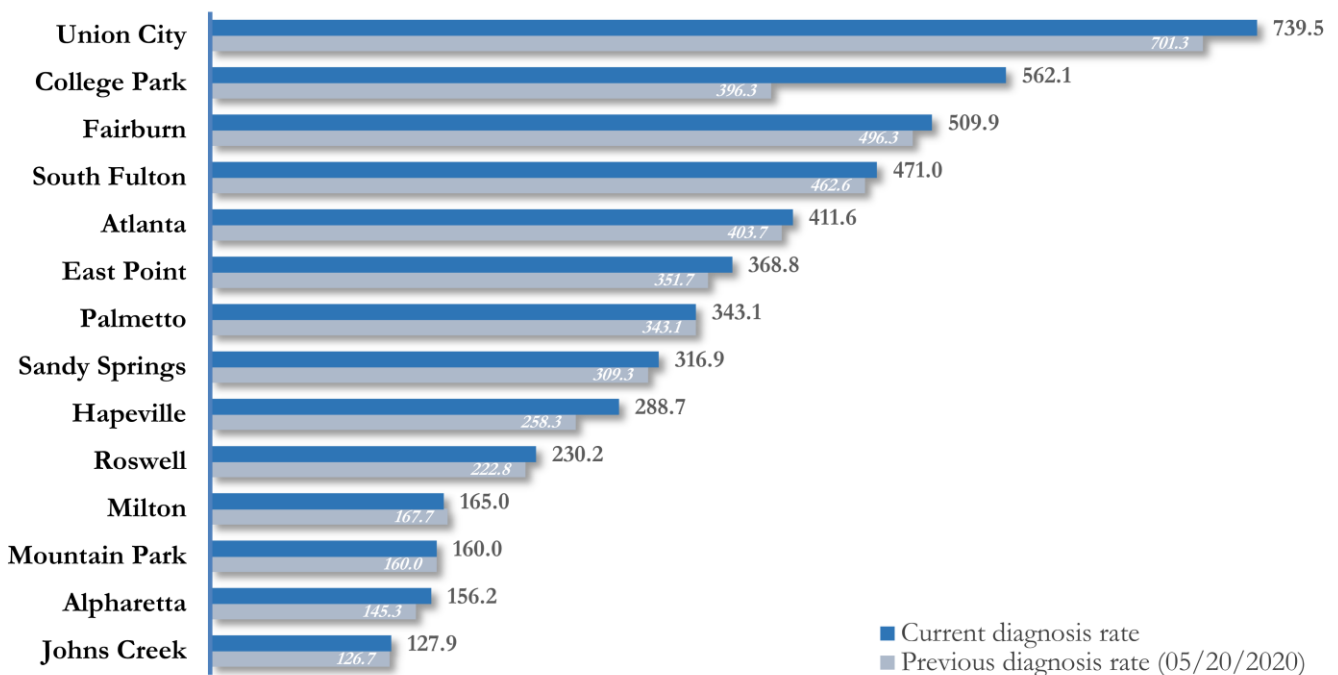


**COVID-19 CASE COUNTS AND RATES BY CITY**

	Prior Count (5/20/2020)	Current Count (5/22/20)	Percent (County Total)	% Change from prior Count	Cumulative Rate (Per 100,000 pop.)	Num. of new cases diagnosed in past 14 days <sup>1</sup>
Atlanta	1781	1816	44.7%	2.0%	411.6	208
South Fulton	440	448	11.0%	1.8%	471.0	29
Sandy Springs	326	334	8.2%	2.5%	316.9	35
Roswell	210	217	5.3%	3.3%	230.2	34
East Point	123	129	3.2%	4.9%	368.8	13
Johns Creek	106	107	2.6%	0.9%	127.9	<10
Union City	147	155	3.8%	5.4%	739.5	41
Alpharetta	94	101	2.5%	7.4%	156.2	19
Milton	64	63	1.6%	-1.6%**	165.0	4
Fairburn	73	75	1.8%	2.7%	509.9	2
College Park	55	78	1.9%	41.8%	562.1	45
Palmetto	15	15	0.4%	0.0%	343.1	0
Hapeville	17	19	0.5%	11.8%	288.7	2
Mountain Park	<10	<10	0.0%	0.0%	160.0	0
Unknown	478	502	12.4%	-	-	-

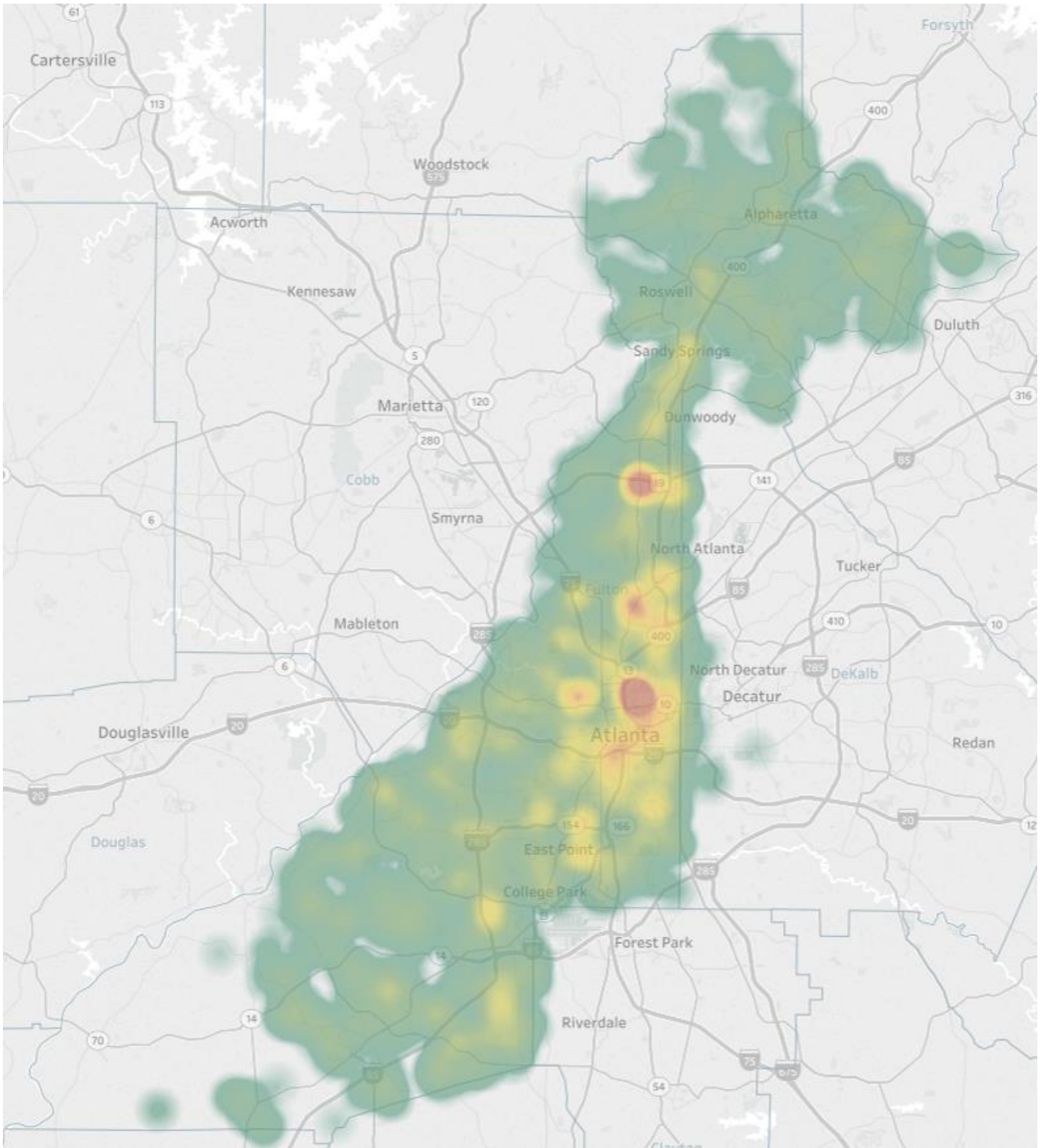
<sup>1</sup>Date of positive sample collection used (or date of report creation where sample collection date was missing) to identify new diagnoses. | Population estimates from US Census Bureau used to calculate diagnoses rates. \*\* Data cleaning (either during case interviews or address geo-coding) may lead to reassignment of few cases from one territory to another based on their corrected addresses. These may appear as “decreases” when compared to the previous day’s count. These do not reflect errors in the data collection or analysis process but only reflect the minor day-to-day fluctuations in case counts that arise in an evolving public health database like COVID’s. **Note:** Sharp increases in territorial COVID case counts often reflect new cases diagnosed at long term care facilities located in those territories during facility-wide /mass screening events. All data reported are preliminary and subject to change.

**COVID-19 Cumulative Diagnoses Rate in Fulton County by City (05/22/20)**



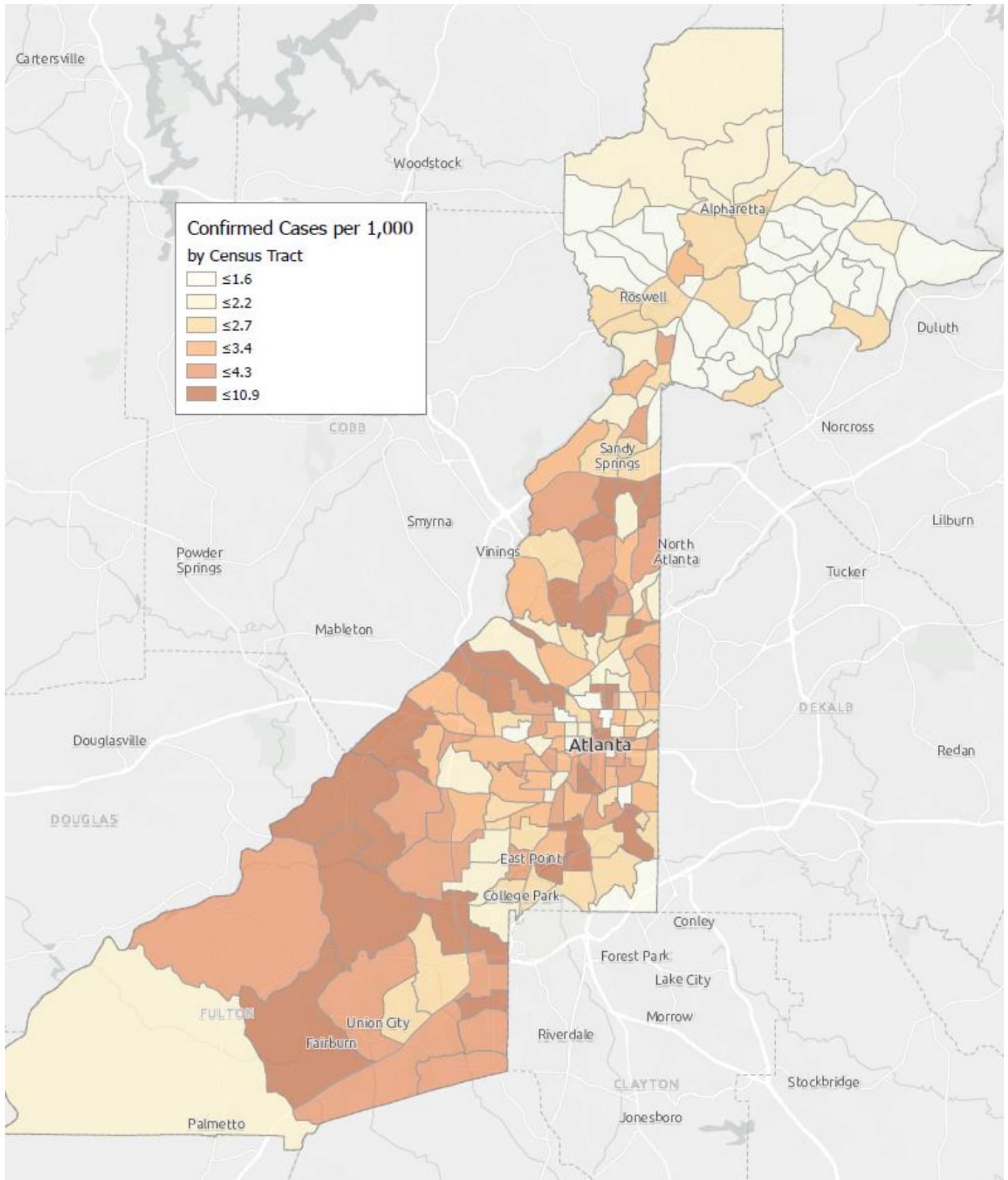
\*Rates shown are per 100,000 persons | **Note:** Mass testing in specific locations (e.g. long term care facilities) may cause sharp increases in the cumulative rate of COVID-19 diagnosis in those territories. All data shown are preliminary and are subject to change as testing results get updated.

Figure 4. Density Map of COVID-19 Cases in Fulton County (5/22/20)



NB. Data used excludes the outbreak-related cases diagnosed at long-term care facilities and reflects the current geographical distribution of COVID19 diagnoses in the general Fulton County community.

Figure 5. COVID19 Diagnosis Rates in Fulton County by Census Tract (5/22/2020)



\*Rates shown are per 1,000 populations.

NB. Data used excludes the outbreak-related cases diagnosed at long-term care facilities and reflects the current geographical distribution of COVID19 diagnoses in



## COVID-19 CASE COUNTS BY ZIP CODE

ZIP code	Prior Count (5/20/2020)	Current Count (5/22/20)	Percent (County Total)	% Change from Previous ZIP Count	Num. of new cases diagnosed in past 14 days <sup>1</sup>
30331	323	334	8.2%	3.4%	28
30318	224	225	5.5%	0.4%	12
30349	224	234	5.8%	4.5%	17
30213	165	173	4.3%	4.8%	15
30315	128	134	3.3%	4.7%	13
30344	117	123	3.0%	5.1%	13
30311	115	116	2.9%	0.9%	<10
30342	160	164	4.0%	2.5%	16
30314	136	152	3.7%	11.8%	82
30310	114	118	2.9%	3.5%	11
30308	77	77	1.9%	0.0%	<10
30022	83	88	2.2%	6.0%	11
30327	87	82	2.0%	-5.7%**	<10
30004	88	89	2.2%	1.1%	11
30309	129	130	3.2%	0.8%	13
30076	74	75	1.8%	1.4%	<10
30291	175	177	4.4%	1.1%	36
30350	72	75	1.8%	4.2%	<10
30075	126	129	3.2%	2.4%	27
30328	88	89	2.2%	1.1%	13
30316	41	38	0.9%	-7.3%**	<10
30312	202	204	5.0%	1.0%	<10
30005	47	47	1.2%	0.0%	<10
30305	86	81	2.0%	-5.8%**	10
30306	46	44	1.1%	-4.3%**	<10
30324	82	88	2.2%	7.3%	16
30337	51	72	1.8%	41.2%	42
30009	41	46	1.1%	12.2%	<10
30313	34	34	0.8%	0.0%	0
30326	26	24	0.6%	-7.7%**	0
30097	37	39	1.0%	5.4%	<10
30354	34	35	0.9%	2.9%	<10
30303	30	30	0.7%	0.0%	<10
30339	12	12	0.3%	0.0%	<10
30268	21	21	0.5%	0.0%	0
30307	15	15	0.4%	0.0%	0
30319	27	27	0.7%	0.0%	<10
30336	12	12	0.3%	0.0%	0
30296	11	10	0.2%	-9.1%**	0
30363	<10	<10	0.2%	-	0
30301	<10	<10	0.1%	-	<10
30345	<10	<10	0.2%	-	<10
31131	<10	<10	0.1%	-	0
30023	<10	<10	0.1%	-	0
30080	<10	<10	0.1%	-	0
30135	<10	<10	0.0%	-	0
30138	<10	<10	0.0%	-	0
30139	<10	<10	0.0%	-	0
30321	<10	<10	0.0%	-	0
30340	<10	<10	0.2%	-	<10
30341	14	16	0.4%	14.3%	<10
30358	<10	<10	0.0%	-	0

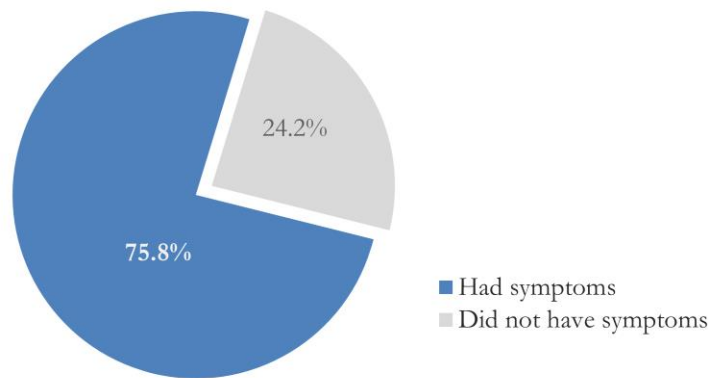
30374	19	19	0.5%	0.0%	0
30606	<10	<10	0.0%	-	0
31150	<10	<10	0.0%	-	0
30024	<10	<10	0.0%	-	0
30098	<10	<10	0.0%	-	0
30334	<10	<10	0.1%	-	<10
30338	<10	<10	0.0%	-	0
Unknown	295	319	7.9%	-	-

<sup>1</sup>Date of first positive sample collection used (or date of report creation where sample date was missing) to identify new diagnoses \*\* Data cleaning (either during case interviews or address geo-coding) may lead to reassignment of few cases from one territory to another based on their corrected addresses. These may appear as “decreases” when compared to the previous day’s count. These do not reflect errors in the data collection or analysis process but only reflect the minor day-to-day fluctuations in case counts that arise in an evolving public health database like COVID’s. **Note:** Sharp increases in territorial COVID case counts often reflect new cases diagnosed at long term care facilities located in those territories during facility-wide/mass screening events. **All data reported are preliminary and subject to change.**

## REPORTING SYMPTOMS AMONG DIAGNOSED CASES IN FULTON

People with COVID-19 have reported a wide range of symptoms ranging from mild symptoms to severe illness. Symptoms may appear 2-14 days after exposure to the virus. Symptoms reported include: cough, shortness of breath/difficulty breathing, fever, chills, repeated shaking with chills, muscle pain, headache, sore throat, new loss of taste or smell – Centers for Disease Control and Prevention (CDC) <https://www.cdc.gov/coronavirus/2019-ncov/symptoms-testing/symptoms.html>

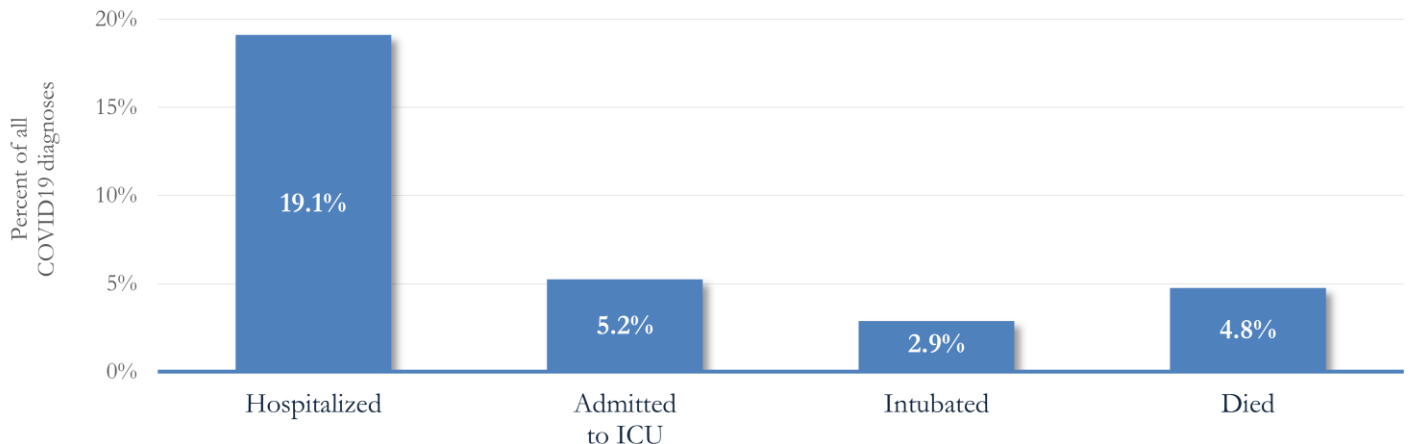
Figure 6. Proportion reporting Symptoms in Fulton County (5/22/20)



\*\*\*COVID-19 cases who have been case interviewed or had medical charts reviewed as at 5/22/20 only\*\*\*

## COVID-19 HOSPITALIZATIONS, ICU ADMISSIONS AND DEATHS IN FULTON

Figure 7. Hospitalizations, ICU Admissions and Deaths among COVID-19 Diagnoses in Fulton County (5/22/20)



## DEMOGRAPHIC DISTRIBUTIONS – COVID 19 DIAGNOSES AND DEATHS IN FULTON

Distribution of COVID-19 diagnoses in Fulton County by Fulton Region – 05/22/20

	North Fulton Cities <sup>1</sup> Count (%)	Atlanta Count (%)	South Fulton Cities <sup>2</sup> Count (%)	Unknown Count (%)	All Fulton Count (%)
<b>Total COVID-19 cases</b>	822	1816	919	503	4060
<b>Gender:</b> Female	407 (49.5%)	874 (48.1%)	530 (57.7%)	269 (53.5%)	2080 (51.2%)
Male	412 (50.1%)	926 (51.0%)	382 (41.6%)	220 (43.7%)	1940 (47.8%)
Unknown	<10	16 (0.9%)	<10	14 (2.8%)	40 (1.0%)
<b>Age:</b> <15	13 (1.6%)	14 (0.8%)	<10	12 (2.4%)	47 (1.2%)
15-24	71 (8.6%)	88 (4.8%)	45 (4.9%)	31 (6.2%)	235 (5.8%)
25-34	116 (14.1%)	278 (15.3%)	90 (9.8%)	101 (20.1%)	585 (14.4%)
35-44	137 (16.7%)	268 (14.8%)	131 (14.3%)	84 (16.7%)	620 (15.3%)
45-54	158 (19.2%)	264 (14.5%)	171 (18.6%)	79 (15.7%)	672 (16.6%)
55-64	137 (16.7%)	303 (16.7%)	170 (18.5%)	78 (15.5%)	688 (16.9%)
≥65	188 (22.9%)	584 (32.2%)	298 (32.4%)	113 (22.5%)	1183 (29.1%)
Unknown	<10	17 (0.9%)	<10	<10	30 (0.7%)
<b>Race:</b> Asian, NH	43 (5.2%)	21 (1.2%)	<10	10 (2.0%)	75 (1.8%)
Black, NH	127 (15.5%)	1034 (56.9%)	676 (73.6%)	176 (35.0%)	2013 (49.6%)
White, NH	308 (37.5%)	289 (15.9%)	71 (7.7%)	76 (15.1%)	744 (18.3%)
Hispanic	104 (12.7%)	57 (3.1%)	29 (3.2%)	34 (6.8%)	224 (5.5%)
Other, NH	29 (3.5%)	34 (1.9%)	13 (1.4%)	13 (2.6%)	89 (2.2%)
Unknown	211 (25.7%)	381 (21.0%)	129 (14.0%)	194 (38.6%)	915 (22.5%)

<sup>1</sup>Includes all Fulton County cities north of Atlanta metro (Alpharetta, Milton, Johns Creek, Roswell, Sandy Springs, Mountain Park ) <sup>2</sup>Includes all cities south of Atlanta (College Park, Chattahoochee Hills, East Point, Hapeville, Palmetto, South Fulton, Fairburn, Union City). **Note:** All data reported are preliminary and subject to change.

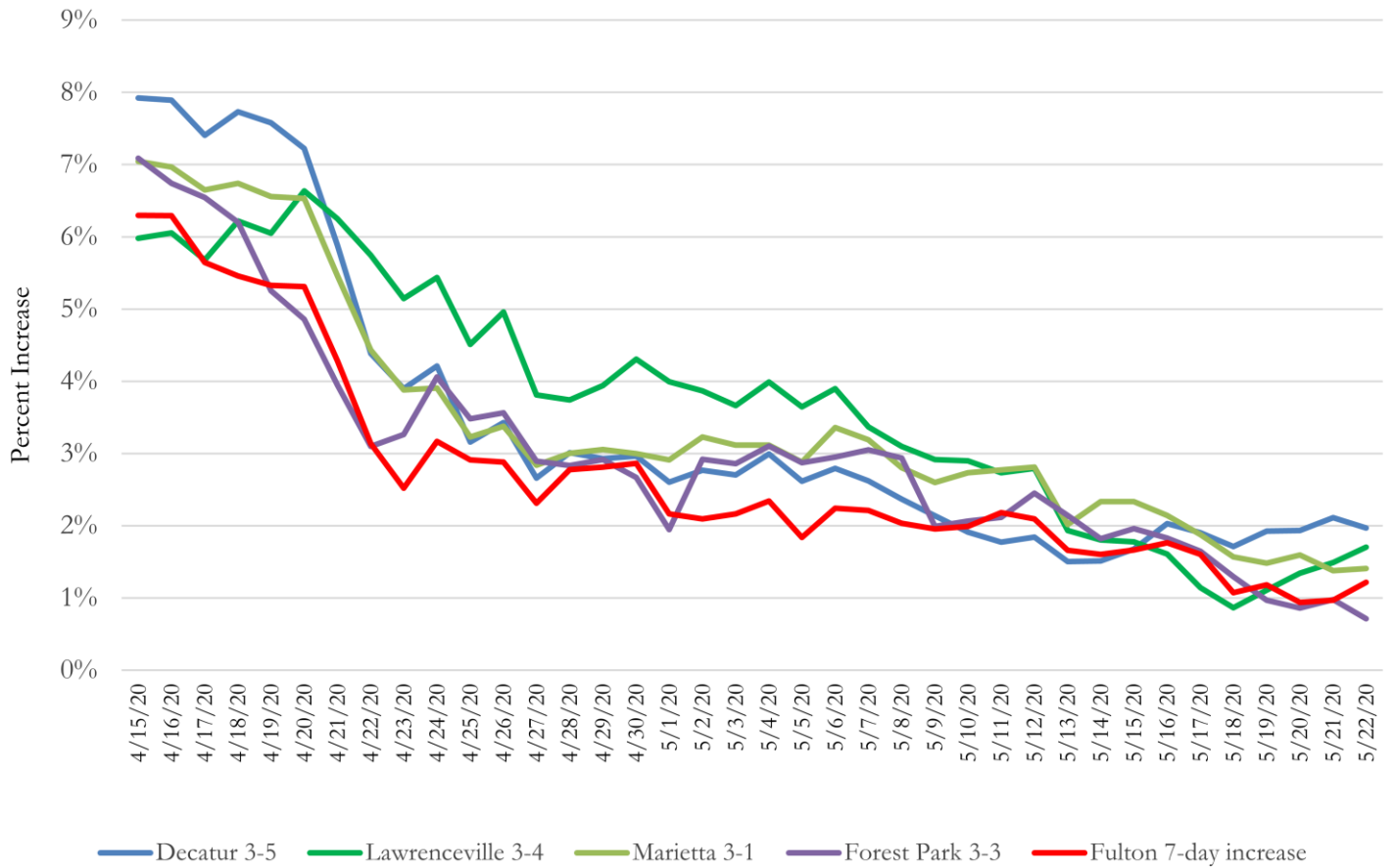
Distribution of COVID-19 Deaths in Fulton County by Fulton Region – 05/22/20

	North Fulton Cities <sup>1</sup> Count (%)	Atlanta Count (%)	South Fulton Cities <sup>2</sup> Count (%)	Unknown Count (%)	All Fulton Count (%)
<b>Total COVID-19 deaths</b>	25	86	64	18	193
<b>Gender:</b> Female	<10	37 (43.0%)	34 (53.1%)	10 (55.6%)	87 (45.1%)
Male	19 (76.0%)	49 (57.0%)	30 (46.9%)	<10	106 (54.9%)
Unknown	0	0	0	0	0
<b>Age:</b> <65	<10	15 (17.4%)	17 (26.6%)	<10	39 (20.2%)
65-74	<10	17 (19.8%)	17 (26.6%)	<10	40 (20.7%)
75-84	<10	27 (31.4%)	12 (18.8%)	<10	51 (26.4%)
≥85	<10	27 (31.4%)	18 (28.1%)	<10	63 (32.6%)
Unknown	0	0	0	0	0
<b>Race:</b> Asian, NH	0	<10	0	0	<10
Black, NH	<10	71 (82.6%)	57 (89.1%)	11 (61.1%)	144 (74.6%)
White, NH	17 (68.0%)	12 (14.0%)	<10	<10	41 (21.2%)
Hispanic	<10	0	<10	0	<10
Other, NH	0	<10	0	0	<10
Unknown	0	0	0	0	0

<sup>1</sup>Includes all Fulton County cities north of Atlanta metro (Alpharetta, Milton, Johns Creek, Roswell, Sandy Springs, Mountain Park ) <sup>2</sup>Includes all cities south of Atlanta (College Park, Chattahoochee Hills, East Point, Hapeville, Palmetto, South Fulton, Fairburn, Union City). **Note:** All data reported are preliminary and subject to change.

**MORBIDITY AND MORTALITY TRENDS**

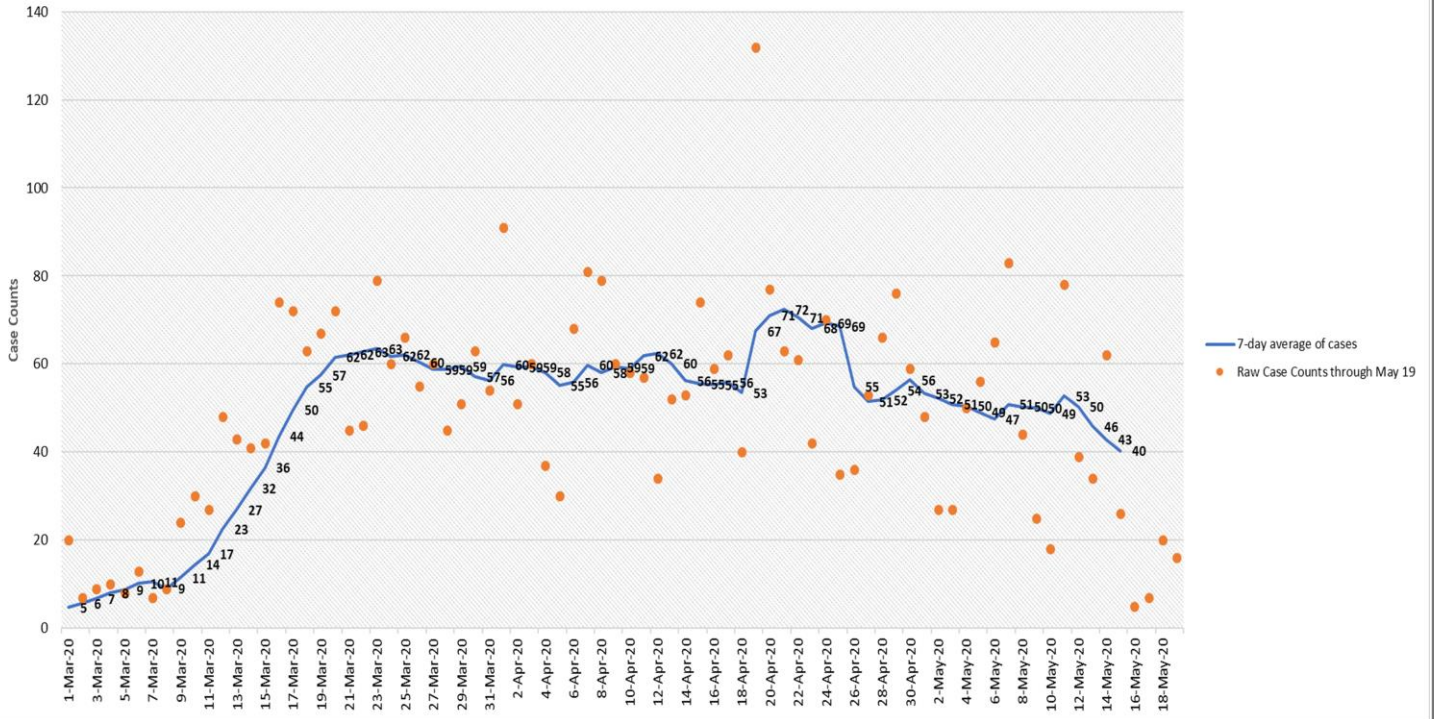
**Daily Percent Increase for Atlanta Metro Districts  
(Averaged over 7 days)**



\*Chart to be updated weekly.

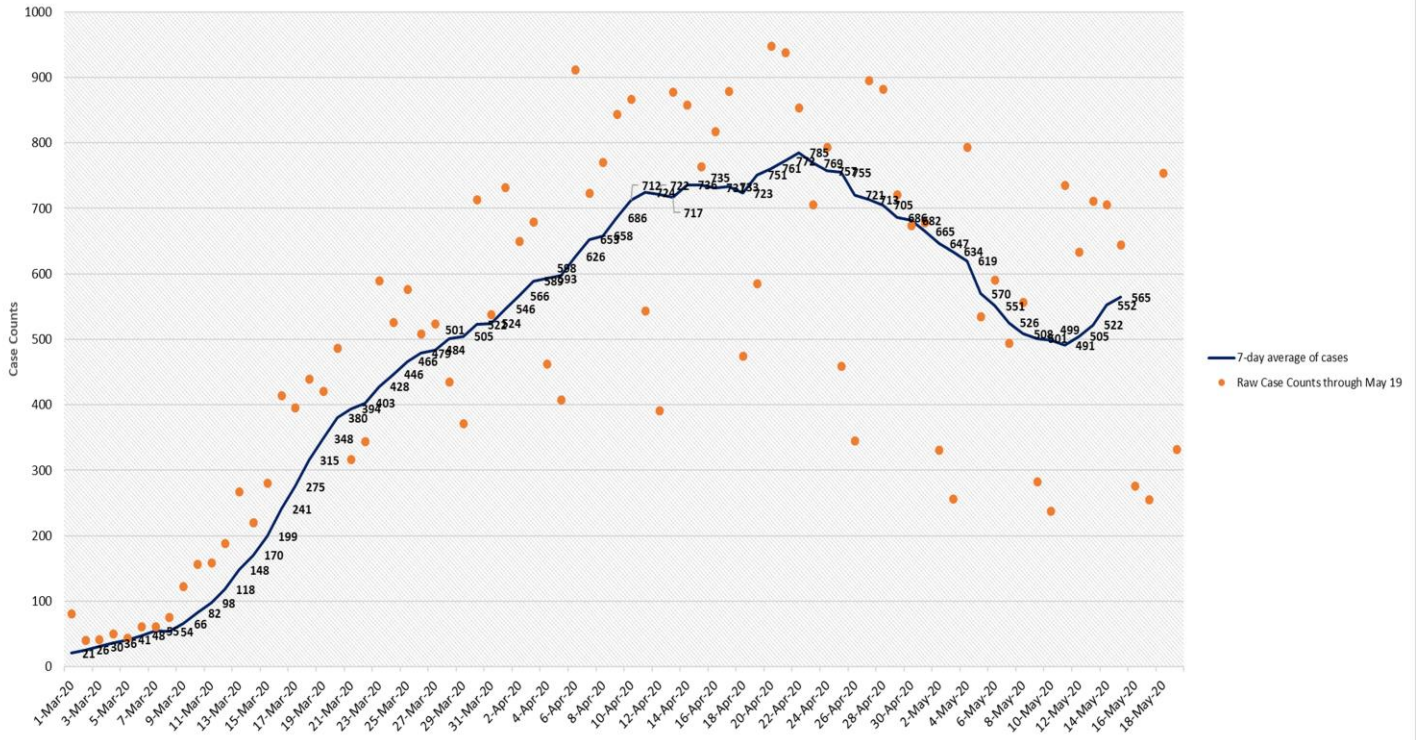


New COVID-19 Cases in Fulton County Daily (Averaged over 7 days)  
March 01, 2020 to May 15, 2020



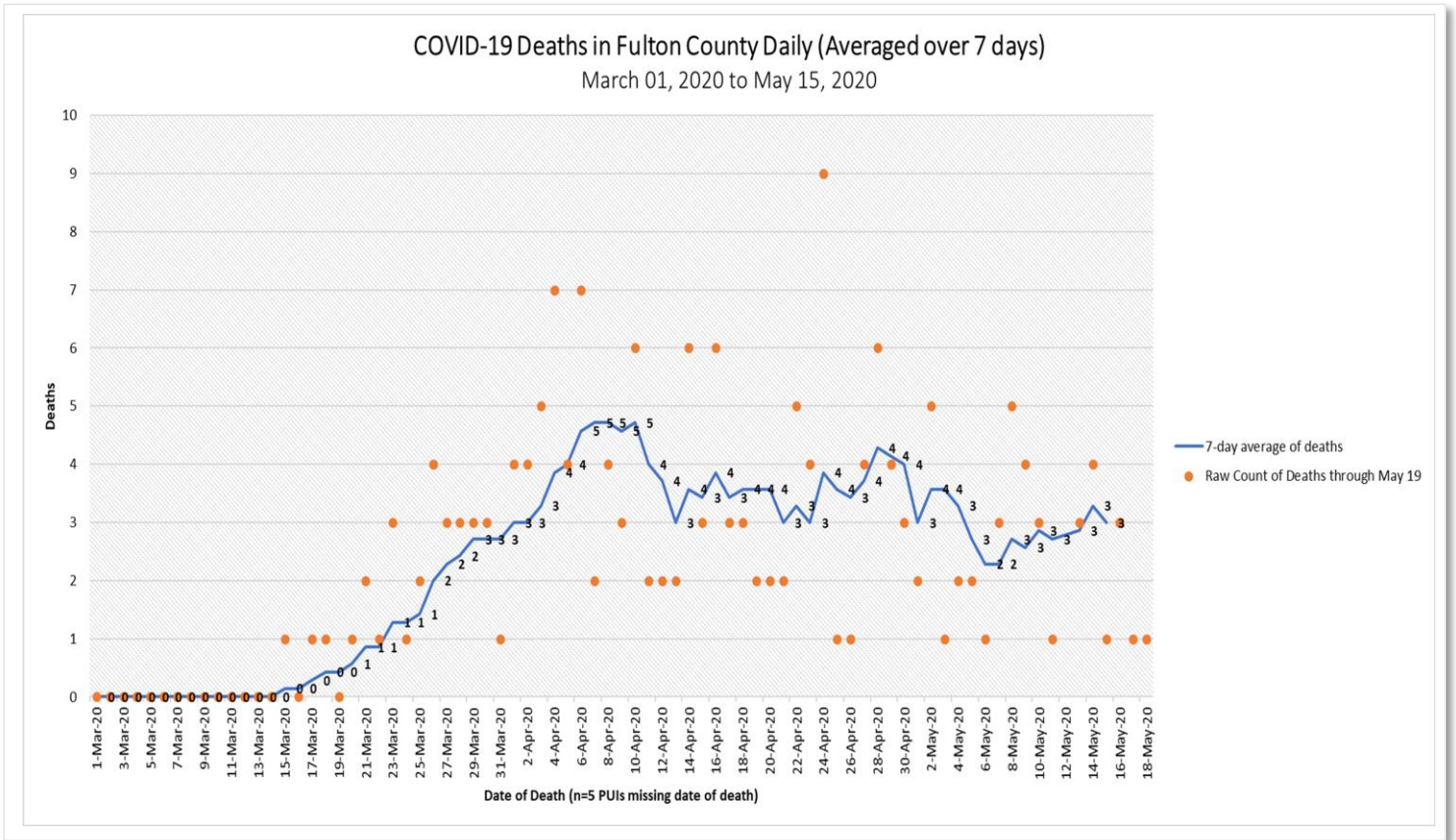
\*Date is the earliest date when comparing the date of symptom onset, date of positive sample collection, and date of report for each PUI.

New COVID-19 Cases in Georgia Daily (Averaged over 7 days)  
March 01, 2020 to May 15, 2020

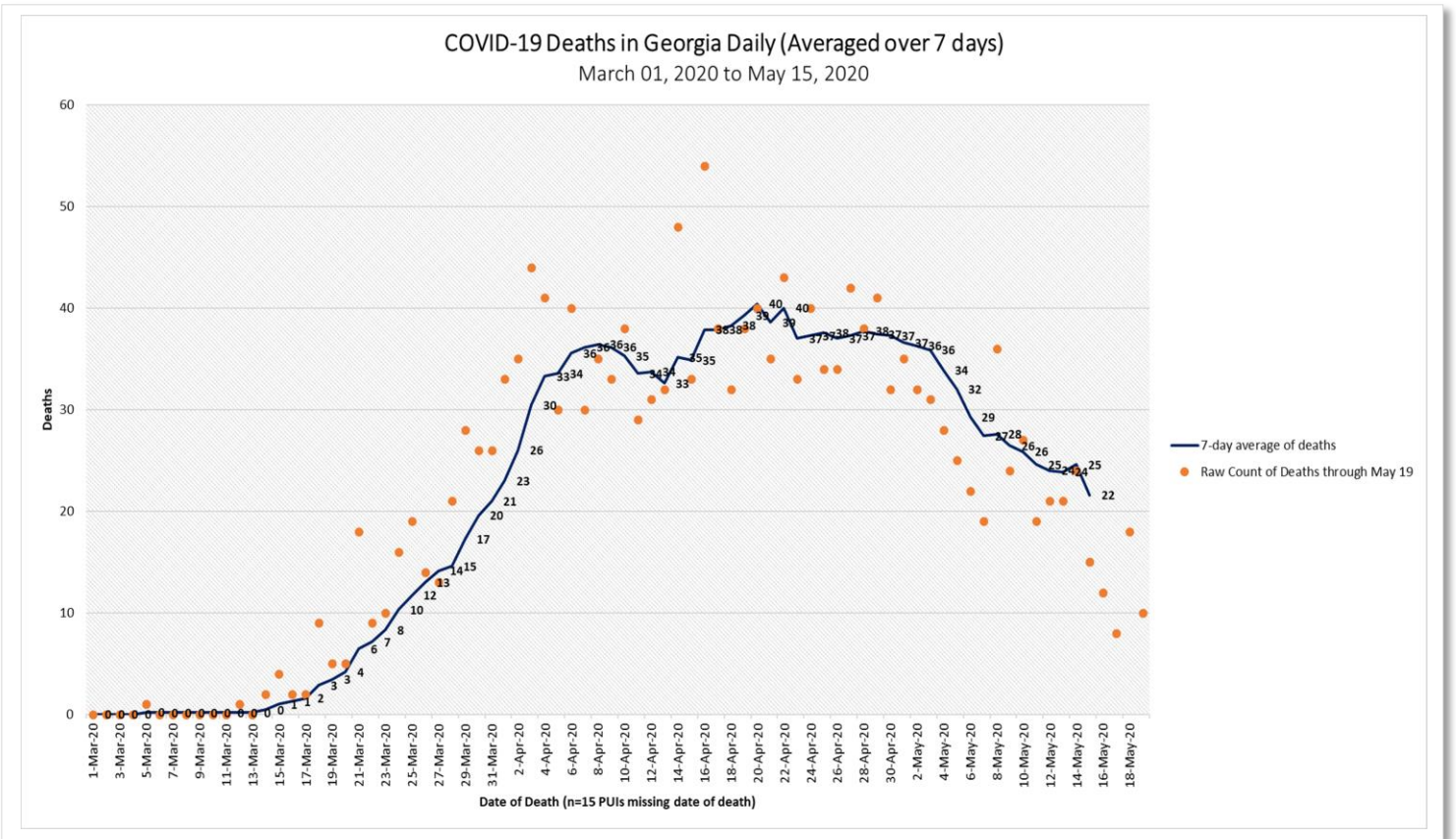


\*Date is the earliest date when comparing the date of symptom onset, date of positive sample collection, and date of report for each PUI.





\*There were no deaths reported in SENDSS prior to March 01, 2020.

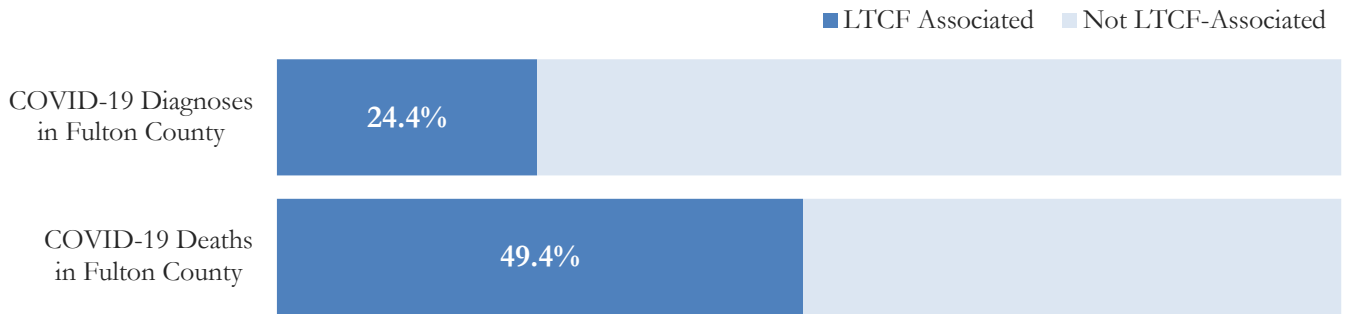


\*There were no deaths reported in SENDSS prior to March 01, 2020.

## COVID 19 IN LONG-TERM CARE FACILITIES AND SENIOR LIVING HOMES IN FULTON

Older persons (aged 65 years and older) and persons who live in nursing homes or other long-term care facilities seem to be at higher risk for developing more serious complications from COVID-19. Extra precautions are recommended for individuals within this risk groups – Centers for Disease Control and Prevention (CDC 2020) <https://www.cdc.gov/coronavirus/2019-ncov/need-extra-precautions/people-at-higher-risk.html>

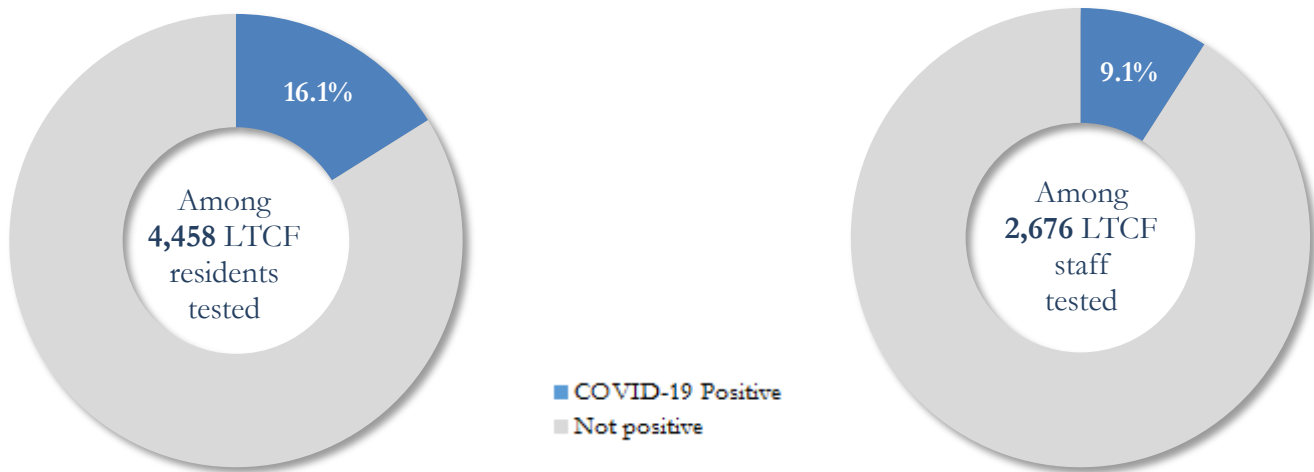
### Of all COVID-19 Diagnoses in Fulton County (05/21/20)



\*\*\*LTCF – Long-term Care Facility (Includes residents and Staff) \*\*\*

**COVID-19 POSITIVITY:** COVID-19 testing is currently being provided at various long-term care facilities in Fulton County through the efforts of the Board of Health and the National Guard. See <https://dch.georgia.gov/> for a line listing of COVID-19 cases at all facilities in Georgia.

### Of 35 reporting long-term care facilities in Fulton County (5/21/20)



### Covid-19 cases, hospitalizations, and deaths among 35 reporting long-term care facilities in Fulton County (5/21/20)

	LTCF Residents (n=4,458)			LTCF Staff (n=2,676)		
	Cases	Hospitalizations	Deaths	Cases	Hospitalizations	Deaths
<b>Average</b> (count per facility) <sup>1</sup>	17.9	4	2.9	7.6	0.7	0.1
<b>Median</b> (count per facility) <sup>1</sup>	2	1.5	1	3.5	0	0
<b>Lowest counts</b>	0	0	0	0	0	0
<b>Highest counts</b>	125	17	17	40	6	1
<b>Total Count</b>	<b>717 (16.1%)<sup>a</sup></b>	<b>97 (13.5%)<sup>b</sup></b>	<b>85 (11.9%)</b>	<b>243 (9.1%)<sup>a</sup></b>	<b>14 (5.8%)<sup>b</sup></b>	<b>1 (0.4%)<sup>b</sup></b>

<sup>a</sup> Percentage shown is proportion of residents/staff tested (COVID-19 Positivity at LTCF). | <sup>b</sup> Percentages shown are proportions of all COVID-19 positive cases.