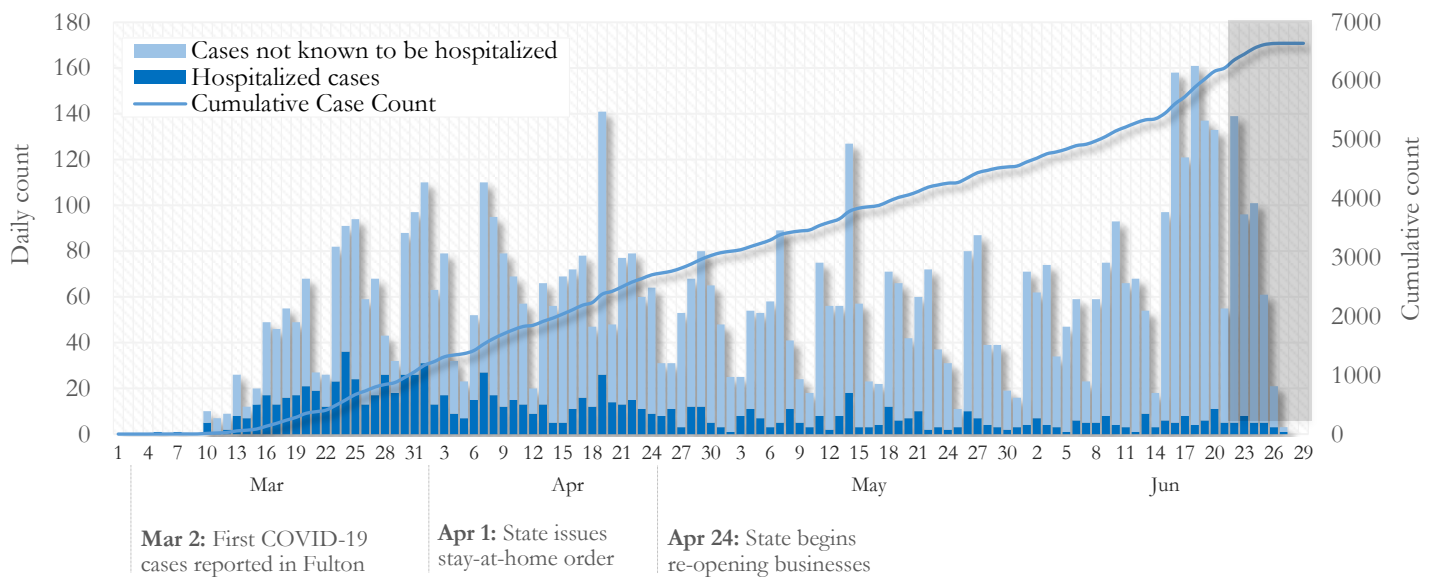


## SUMMARY

- As of June 29, 2020, Fulton has recorded **6,643** cases of the 2019 novel coronavirus (COVID-19) and **311** deaths.
- Of 1,434 **new diagnoses** made between June 8 and June 22, the central portion of the county (Atlanta metro) accounted for 45% while the northern and southern parts accounted for 30% and 17% respectively.
- By city, **new** COVID-19 diagnoses rates range from 45.7 per 100,000 persons (Palmetto) to 379.9 per 100,000 persons (Hapeville). [Fulton County Diagnoses Rates (per 100,000 persons): Cumulative – 624.4; New – 134.8]. See map showing incident case rate by ZIP code on Pg.4.
- Among all persons diagnosed with COVID-19 in Fulton County, 16.0% required hospitalization and 4.7% died.
- Residents and staff of long-term care facilities account for 19% of COVID-19 diagnoses and 57% of COVID-19 deaths in Fulton County (6/29/20).

## Daily and Cumulative COVID-19 diagnoses in Fulton County, GA (6/29/20)



\*Counts shown reflect the number of confirmed cases as of 9:00am on 6/29/20 using the date of first positive sample collection. Where date of sample collection was not available or missing, the date of report creation in GA SENDSS was used instead. **Note:** All data reported are preliminary and subject to change. Delays in data reporting may cause changes in data counts, particularly in the shaded portion.

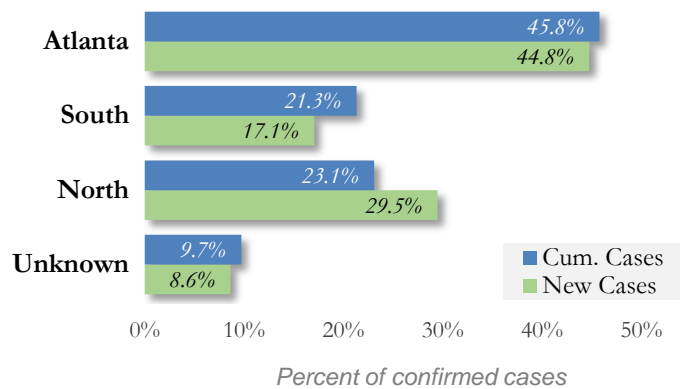
## DISTRIBUTION OF COVID-19 DIAGNOSES BY REGION

**New cases:** 45% of the new COVID-19 cases diagnosed in the past 2 weeks occurred in Atlanta while 30% and 17% occurred in the Northern and Southern regions of the county respectively.

Fulton Region	% Cumulative count	% New cases*
Atlanta	45.8%	44.8%
North <sup>1</sup>	23.1%	29.5%
South <sup>2</sup>	21.3%	17.1%
Unincorporated/Unknown	9.7%	8.6%

<sup>1</sup>Includes all Fulton County cities north of Atlanta metro (Alpharetta, Milton, Johns Creek, Roswell, Sandy Springs, Mountain Park) | <sup>2</sup>Includes all cities south of Atlanta (College Park, Chattahoochee Hills, East Point, Hapeville, Palmetto, South Fulton, Fairburn, and Union City) \***New cases:** Cases diagnosed in the past 2 weeks only (between 6/8/20 – 6/22/20).

**Fig. 2. Distribution of COVID 19 cases (6/29/20)**

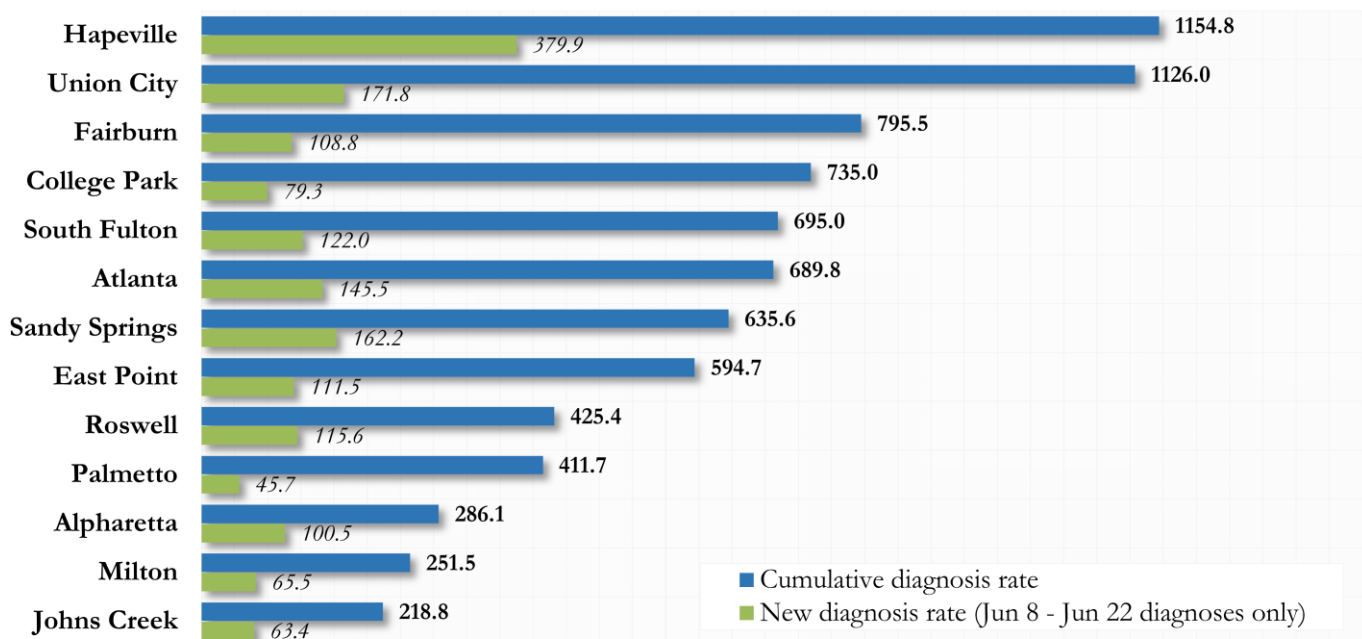


## COVID-19 CASE COUNTS AND RATES BY CITY

	Prior (6/26/20)	Current Total (6/29/20)			New Cases (Period: 5/25/20 – 6/22/20) <sup>1</sup>			
	Count	Count	%	Cum. Rate <sup>2</sup>	Ist 14 d.	Last 14 d.	% change <sup>3</sup>	Rate <sup>4</sup> (last 14 d).
Atlanta	2885	3043	45.8%	689.8	305	642	↑ 110.5%	145.5
South Fulton	637	661	10.0%	695.0	50	116	↑ 132.0%	122.0
Sandy Springs	622	670	10.1%	635.6	84	171	↑ 103.6%	162.2
Roswell	378	401	6.0%	425.4	45	109	↑ 142.2%	115.6
East Point	200	208	3.1%	594.7	15	39	↑ 160.0%	111.5
Johns Creek	173	183	2.8%	218.8	18	53	↑ 194.4%	63.4
Union City	229	236	3.6%	1126.0	17	36	↑ 111.8%	171.8
Alpharetta	164	185	2.8%	286.1	14	65	↑ 364.3%	100.5
Milton	95	96	1.4%	251.5	12	25	↑ 108.3%	65.5
Fairburn	107	117	1.8%	795.5	15	16	↑ 6.7%	108.8
College Park	97	102	1.5%	735.0	<10	11	↑ 83.3%	79.3
Palmetto	18	18	0.3%	411.7	<10	<10	↑ 100.0%	45.7
Hapeville	70	76	1.1%	1154.8	23	25	↑ 8.7%	379.9
Mountain Park	0	0	0.0%	-	0	0	-	-
Unknown	610	647	9.7%	-	55	118	-	-

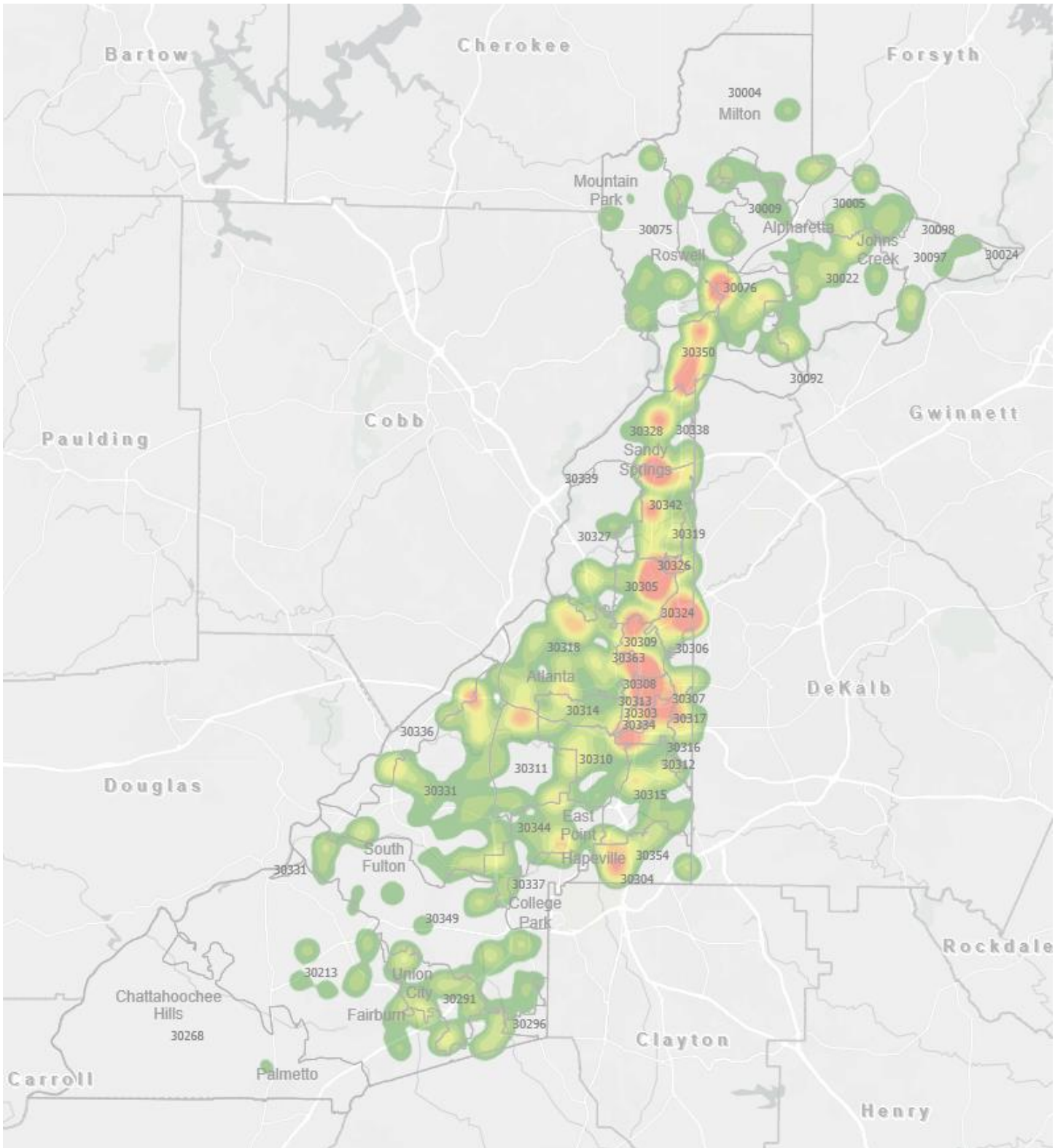
<sup>1</sup>**New cases:** Cases diagnosed in most recent 28 days (based on reported dates of positive sample collection). To allow for lag in reporting results of new diagnoses from samples collected in the most recent week, data used for incident diagnoses analyses were moved back by one week. <sup>2</sup>**Cumulative diagnosis rate:** Population estimates from US Census Bureau used to calculate cumulative diagnoses rate. All rates shown are per 100,000 persons. <sup>3</sup>**Percent change:** These reflect the percentage increase or decrease in new diagnoses between the 14 days preceding the most recent 7 days and the 14 days preceding that. Changes in cities with less than 10 cases in both 2 week intervals are not reported. <sup>4</sup>**Incidence Rate:** Rate of new diagnoses in the recent past 14 days. \*\*Data cleaning (either during case interviews or address geo-coding) may lead to reassignment of few cases from one territory to another based on their corrected addresses. These may appear as “decreases” when compared to the previous day’s count. These do not reflect errors in the data collection or analysis process but only reflect the minor day-to-day fluctuations in case counts that arise in an evolving public health database like COVID’s. **Note:** Sharp increases in territorial COVID case counts often reflect new cases diagnosed at long term care facilities located in those territories during facility-wide /mass screening events **All data reported are preliminary and subject to change.**

Fig. 3. Incident &amp; Cumulative Diagnoses Rates for COVID-19 by City (6/29/20)



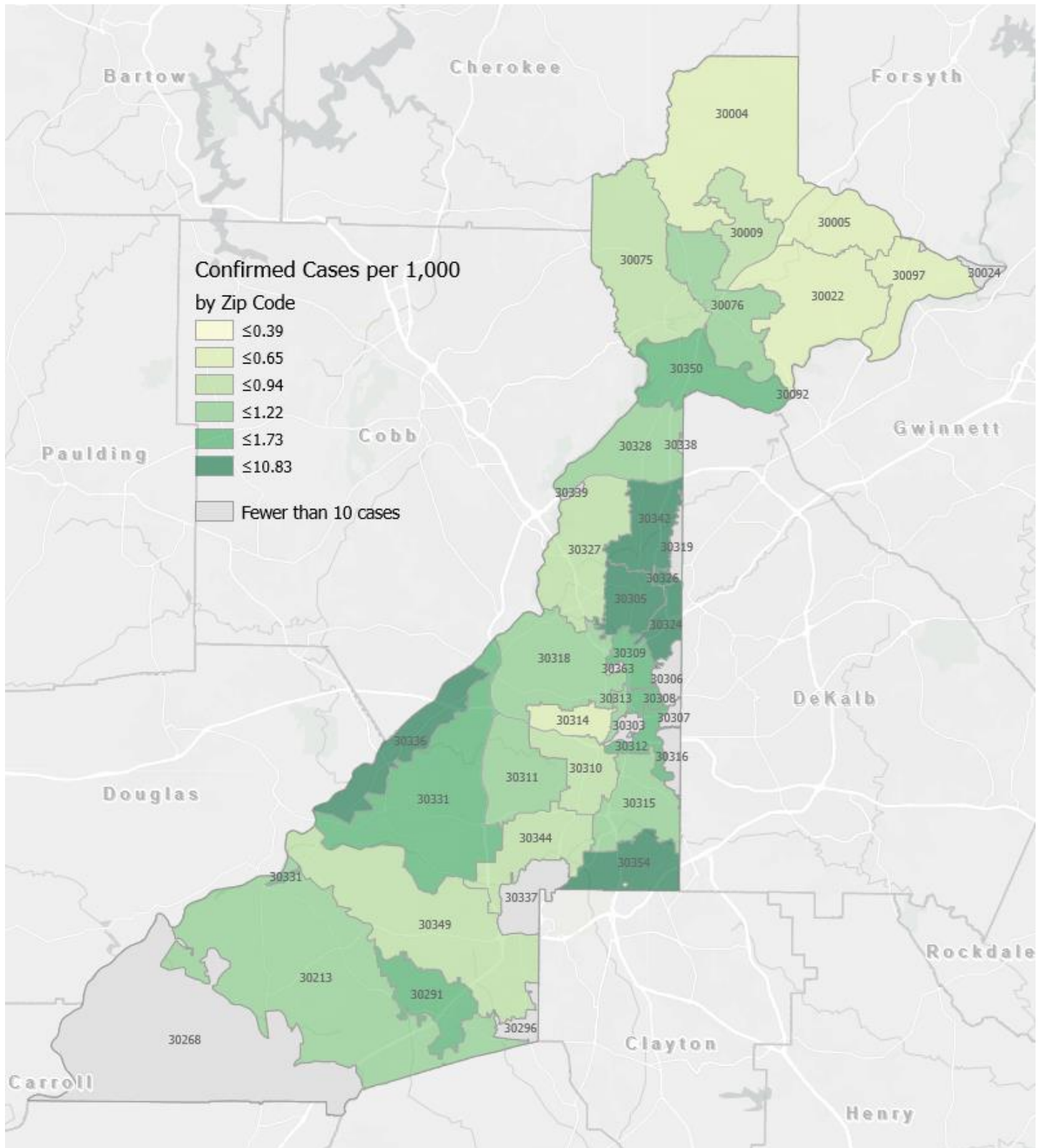
\*Rates shown are per 100,000 persons | **Note:** Mass testing in specific locations (e.g. long term care facilities) may cause sharp increases in the cumulative rate of COVID-19 diagnosis in those territories. All data shown are preliminary and are subject to change as testing results get updated.

Fig. 4. Density Map – New COVID 19 Diagnoses (Jun 8 – Jun 22, 2020) in Fulton County



NB. **New COVID-19 cases:** Cases diagnosed in most recent 14 days (based on reported dates of positive sample collection). To allow for lag in reporting results of positive cases from samples collected in the immediate past 7 days, data used for incident diagnoses analyses are moved back by one week. Map reflects new COVID-19 cases diagnosed between June 8<sup>th</sup> and Jun 22<sup>nd</sup>, 2020 across Fulton County.

Fig. 5. New COVID-19 Diagnoses Rates by ZIP Code (Jun 8 – Jun 22, 2020)



\*Rates shown are per 1,000 populations.

- **New COVID-19 cases:** Cases diagnosed in most recent 14 days (based on reported dates of positive sample collection). To allow for lag in reporting results of positive cases from samples collected in the immediate past 7 days, data used for incident diagnoses analyses are moved back by one week.

- Data used excludes outbreak-related cases at long-term care facilities and Map shown reflects only the new non-LTCF cases diagnosed between Jun 8<sup>th</sup> and Jun 22<sup>nd</sup> 2020.



## COVID-19 CASE COUNTS BY ZIP CODE

	Prior (6/26/20)	Current Total (6/29/20)		New Cases (Period: 5/25/20 – 6/22/20) <sup>1</sup>		
	Count	Count	%	1st 14 days	Last 14 d.	% change <sup>2</sup>
30331	447	484	7.3%	29	83	↑ 186.2%
30318	339	409	6.2%	37	81	↑ 118.9%
30349	313	358	5.4%	32	53	↑ 65.6%
30213	225	267	4.0%	26	49	↑ 88.5%
30315	177	205	3.1%	12	37	↑ 208.3%
30344	173	195	2.9%	12	37	↑ 208.3%
30311	173	201	3.0%	12	49	↑ 308.3%
30342	258	323	4.9%	38	66	↑ 73.7%
30314	208	228	3.4%	10	21	↑ 110.0%
30310	156	215	3.2%	47	34	↓ 27.7%
30308	104	107	1.6%	<10	28	↑ 1300.0%
30022	143	181	2.7%	24	58	↑ 141.7%
30327	101	134	2.0%	11	24	↑ 118.2%
30004	121	143	2.2%	16	38	↑ 137.5%
30309	165	188	2.8%	14	51	↑ 264.3%
30076	138	157	2.4%	16	54	↑ 237.5%
30291	236	260	3.9%	15	40	↑ 166.7%
30350	149	187	2.8%	29	62	↑ 113.8%
30075	197	221	3.3%	17	57	↑ 235.3%
30328	136	171	2.6%	18	53	↑ 194.4%
30316	51	67	1.0%	<10	12	↑ 33.3%
30312	258	274	4.1%	<10	42	↑ 425.0%
30005	68	85	1.3%	<10	34	↑ 466.7%
30305	145	211	3.2%	51	62	↑ 21.6%
30306	50	57	0.9%	<10	<10	-
30324	164	221	3.3%	45	67	↑ 48.9%
30337	87	100	1.5%	<10	<10	-
30009	55	72	1.1%	10	17	↑ 70.0%
30313	46	50	0.8%	<10	11	↑ 450.0%
30326	39	47	0.7%	<10	14	↑ 250.0%
30097	51	59	0.9%	<10	14	↑ 180.0%
30354	82	114	1.7%	27	36	↑ 33.3%
30303	40	44	0.7%	<10	<10	-
30339	15	19	0.3%	<10	<10	-
30268	23	25	0.4%	<10	<10	-
30307	24	28	0.4%	<10	10	↑ 233.3%
30319	34	46	0.7%	<10	14	↑ 75.0%
30336	25	32	0.5%	<10	12	↑ 300.0%
30296	12	13	0.2%	<10	0	↓ 100.0%
30363	<10	12	0.2%	<10	<10	-
30301	<10	<10	<0.1%	0	<10	-
30345	11	17	0.3%	<10	<10	-
31131	<10	<10	<0.1%	0	0	↔
30023	<10	<10	<0.1%	0	0	↔
30080	<10	<10	<0.1%	0	0	↔
30135	<10	<10	<0.1%	0	0	↔
30138	<10	<10	<0.1%	0	0	↔
30139	-	-	-	0	0	↔
30321	<10	<10	<0.1%	<10	<10	-
30340	21	22	0.3%	<10	12	↑ 300.0%
30341	15	18	0.3%	<10	<10	-
30358	<10	<10	<0.1%	0	0	↔

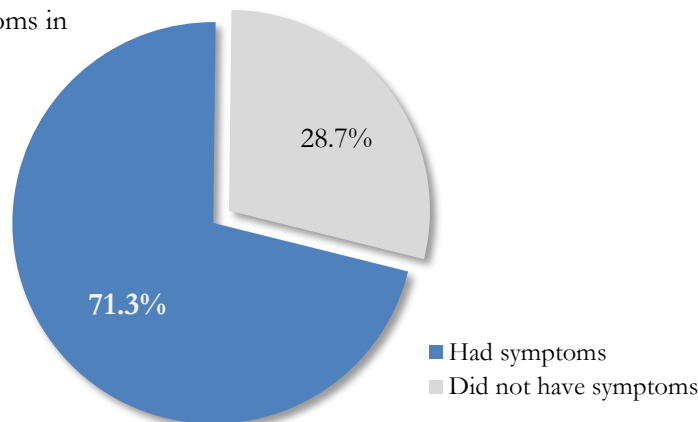
30374	19	21	0.3%	<10	<10	-
30606	<10	<10	<0.1%	0	0	↔
31150	<10	<10	<0.1%	0	0	↔
30024	<10	<10	<0.1%	0	<10	-
30098	-	-	-	0	0	↔
30334	<10	<10	<0.1%	<10	0	↓ 100.0%
30338	<10	<10	<0.1%	<10	<10	-
Unknown	957	327	4.9%	28	55	-

<sup>1</sup>**New cases:** Cases diagnosed in most recent 28 days (based on reported dates of positive sample collection). To allow for lag in reporting results of new diagnoses from samples collected in the most recent week, data used for incident diagnoses analyses were moved back by one week. <sup>2</sup>**Percent change:** These reflect the percentage increase or decrease of new diagnoses between the 14 days preceding the past 7 days and the 14 days preceding that. Changes in ZIP codes with less than 10 cases in *both* 2 week intervals are not reported\*\*Data cleaning (either during case interviews or address geo-coding) may lead to reassignment of few cases from one territory to another based on their corrected addresses. These may appear as “decreases” when compared to the previous day’s count. These do not reflect errors in the data collection or analysis process but only reflect the minor day-to-day fluctuations in case counts that arise in an evolving public health database like COVID’s. **Note:** Sharp increases in territorial COVID case counts often reflect new cases diagnosed at long term care facilities located in those territories during facility-wide /mass screening events **All data reported are preliminary and subject to change.**

### REPORTING SYMPTOMS AMONG PERSONS DIAGNOSED WITH COVID-19 IN FULTON

People with COVID-19 have reported a wide range of symptoms ranging from mild symptoms to severe illness. Symptoms may appear 2-14 days after exposure to the virus. Symptoms reported include: cough, shortness of breath/difficulty breathing, fever, chills, repeated shaking with chills, muscle pain, headache, sore throat, new loss of taste or smell – Centers for Disease Control and Prevention (CDC)  
<https://www.cdc.gov/coronavirus/2019-ncov/symptoms-testing/symptoms.html>

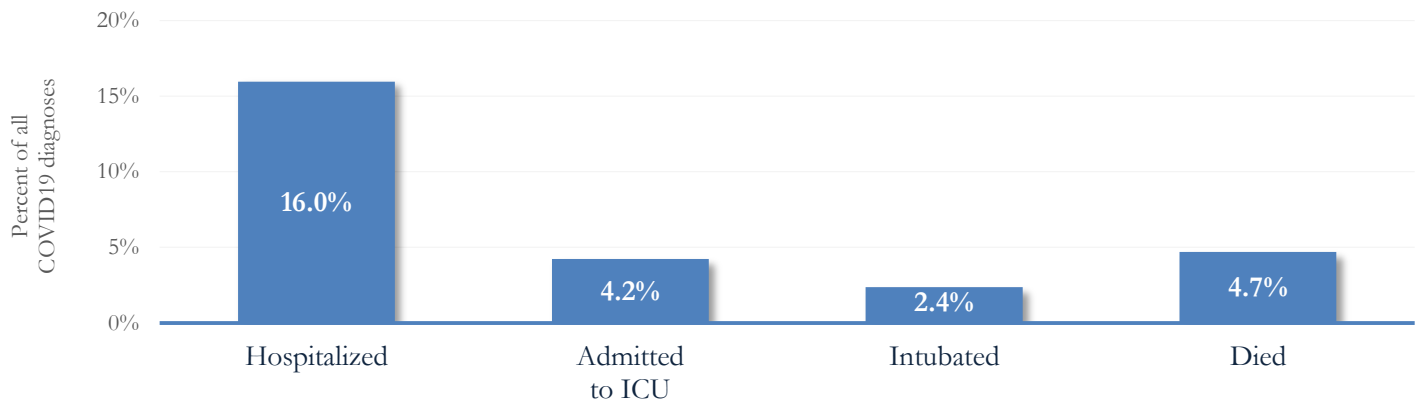
Fig. 6. Proportion reporting Symptoms in Fulton County (6/29/20)



\*\*\*COVID-19 cases who have been case interviewed or had medical charts reviewed as at 6/29/20 only\*\*\*

### COVID-19 HOSPITALIZATIONS, ICU ADMISSIONS AND DEATHS IN FULTON

Fig. 7. Hospitalizations, ICU Admissions and Deaths among COVID-19 Diagnoses in Fulton County (6/29/20)



## DEMOGRAPHIC DISTRIBUTIONS – COVID 19 DIAGNOSES AND DEATHS IN FULTON

Distribution of COVID-19 diagnoses in Fulton County by Fulton Region – 6/29/20

	North Fulton Cities <sup>1</sup> Count (%)	Atlanta Count (%)	South Fulton Cities <sup>2</sup> Count (%)	Unknown City Count (%)	All Fulton Count (%)
<b>Total COVID-19 cases</b>	1535	3043	1418	647	6643
<b>Gender:</b> Female	724 (47.2%)	1492 (49.0%)	799 (56.3%)	331 (51.2%)	3346 (50.4%)
Male	769 (50.1%)	1499 (49.3%)	584 (41.2%)	305 (47.1%)	3157 (47.5%)
Unknown	42 (2.7%)	52 (1.7%)	35 (2.5%)	11 (1.7%)	140 (2.1%)
<b>Age:</b> <15	50 (3.3%)	43 (1.4%)	26 (1.8%)	20 (3.1%)	139 (2.1%)
15-24	243 (15.8%)	348 (11.4%)	124 (8.7%)	61 (9.4%)	776 (11.7%)
25-34	256 (16.7%)	640 (21.0%)	221 (15.6%)	147 (22.7%)	1264 (19.0%)
35-44	283 (18.4%)	471 (15.5%)	239 (16.9%)	110 (17.0%)	1103 (16.6%)
45-54	261 (17.0%)	376 (12.4%)	238 (16.8%)	98 (15.1%)	973 (14.6%)
55-64	202 (13.2%)	394 (12.9%)	229 (16.1%)	77 (11.9%)	902 (13.6%)
65-74	124 (8.1%)	366 (12.0%)	164 (11.6%)	44 (6.8%)	698 (10.5%)
≥75	114 (7.4%)	390 (12.8%)	175 (12.3%)	85 (13.1%)	764 (11.5%)
Unknown	<10	15 (0.5%)	<10	<10	24 (0.4%)
<b>Race:</b> Asian, NH	61 (4.0%)	36 (1.2%)	<10	15 (2.3%)	116 (1.7%)
Black, NH	181 (11.8%)	1564 (51.4%)	938 (66.1%)	214 (33.1%)	2897 (43.6%)
White, NH	466 (30.4%)	555 (18.2%)	100 (7.1%)	113 (17.5%)	1234 (18.6%)
Hispanic	317 (20.7%)	220 (7.2%)	84 (5.9%)	82 (12.7%)	703 (10.6%)
Other, NH	41 (2.7%)	64 (2.1%)	19 (1.3%)	21 (3.2%)	145 (2.2%)
Unknown	469 (30.6%)	604 (19.8%)	273 (19.3%)	202 (31.2%)	1548 (23.3%)

<sup>1</sup>Includes all Fulton County cities north of Atlanta metro (Alpharetta, Milton, Johns Creek, Roswell, Sandy Springs, Mountain Park ) <sup>2</sup>Includes all cities south of Atlanta (College Park, Chattahoochee Hills, East Point, Hapeville, Palmetto, South Fulton, Fairburn, Union City). **Note:** All data reported are preliminary and subject to change.

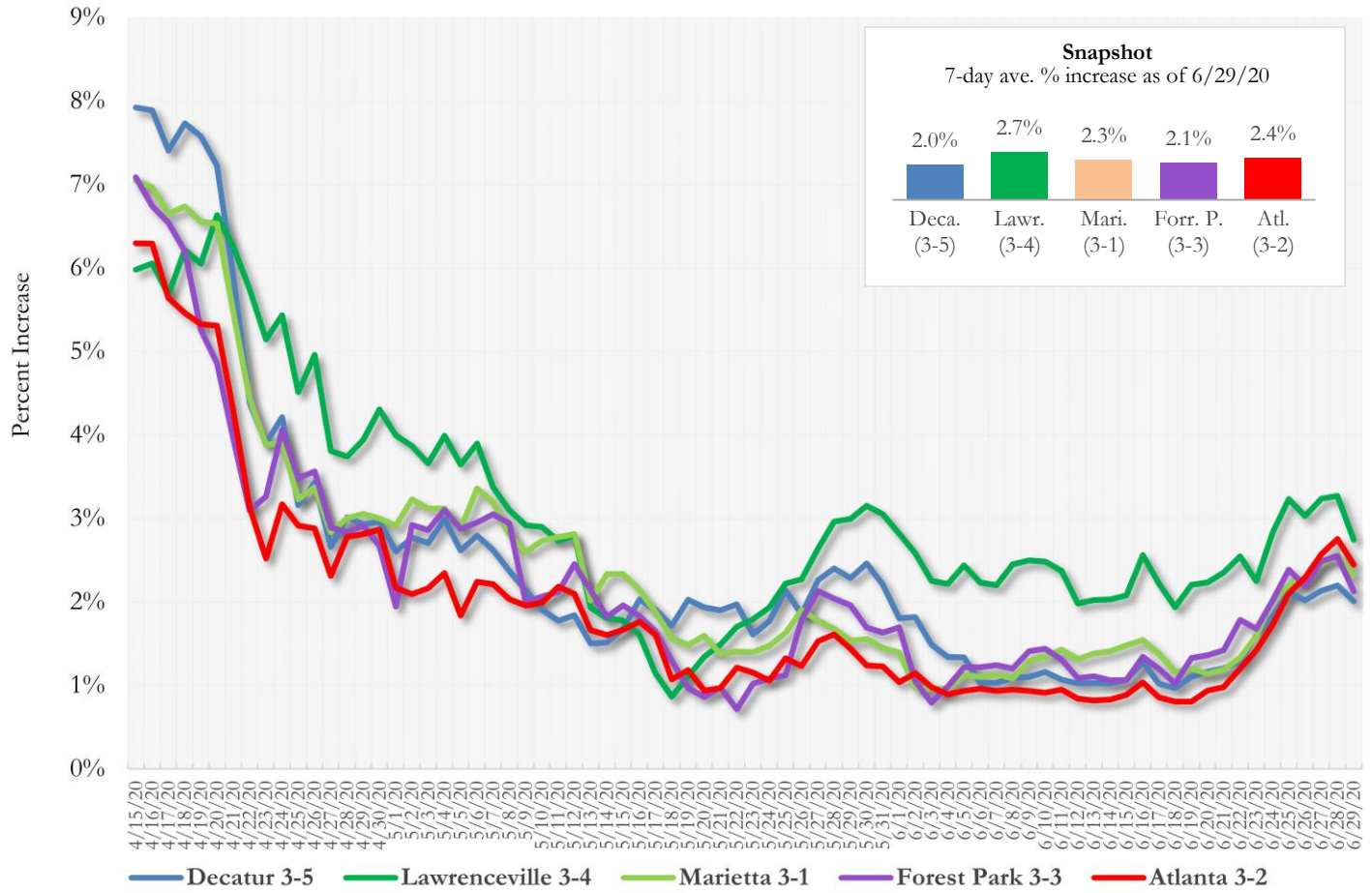
Distribution of COVID-19 Deaths in Fulton County by Fulton Region – 6/29/20

	North Fulton Cities <sup>1</sup> Count (%)	Atlanta Count (%)	South Fulton Cities <sup>2</sup> Count (%)	Unknown City Count (%)	All Fulton Count (%)
<b>Total COVID-19 deaths</b>	40	148	94	29	311
<b>Gender:</b> Female	14 (35.0%)	60 (40.5%)	50 (53.2%)	17 (58.6%)	141 (45.3%)
Male	26 (65.0%)	88 (59.5%)	44 (46.8%)	12 (41.4%)	170 (54.7%)
Unknown	<10	0	0	0	<10
<b>Age:</b> <65	<10	25 (16.9%)	27 (28.7%)	<10	61 (19.6%)
65-74	<10	38 (25.7%)	24 (25.5%)	<10	71 (22.8%)
75-84	12 (30.0%)	43 (29.1%)	19 (20.2%)	<10	82 (26.4%)
≥85	17 (42.5%)	42 (28.4%)	24 (25.5%)	14 (48.3%)	97 (31.2%)
Unknown	0	0	0	0	0
<b>Race:</b> Asian, NH	0	<10	0	0	<10
Black, NH	<10	128 (86.5%)	80 (85.1%)	14 (48.3%)	228 (73.3%)
White, NH	31 (77.5%)	13 (8.8%)	10 (10.6%)	13 (44.8%)	67 (21.5%)
Hispanic	<10	<10	<10	<10	10 (3.2%)
Other, NH	0	<10	<10	0	<10
Unknown	0	<10	0	0	<10

<sup>1</sup>Includes all Fulton County cities north of Atlanta metro (Alpharetta, Milton, Johns Creek, Roswell, Sandy Springs, Mountain Park ) <sup>2</sup>Includes all cities south of Atlanta (College Park, Chattahoochee Hills, East Point, Hapeville, Palmetto, South Fulton, Fairburn, Union City). **Note:** All data reported are preliminary and subject to change.

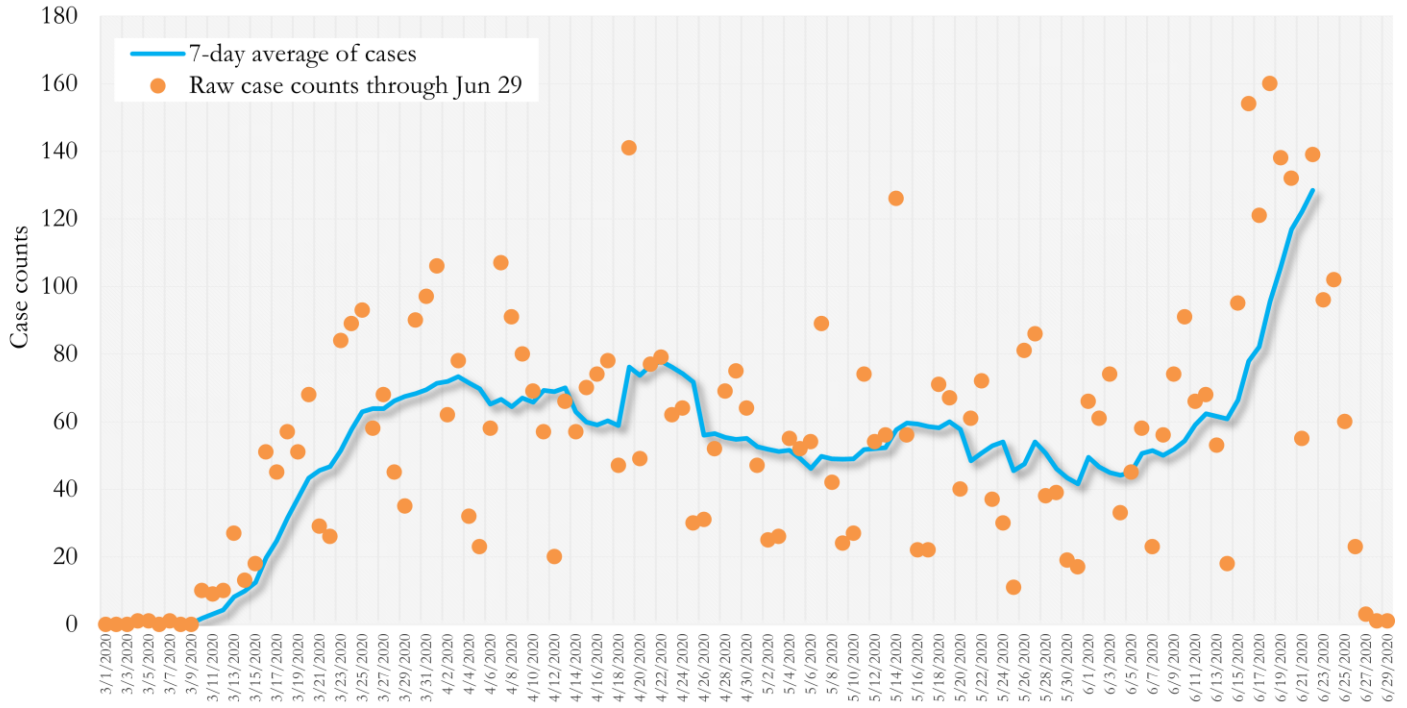
MORBIDITY AND MORTALITY TRENDS

**Fig. 8. Daily Percent Increase for Atlanta Metro Districts  
(Averaged over 7 days)**



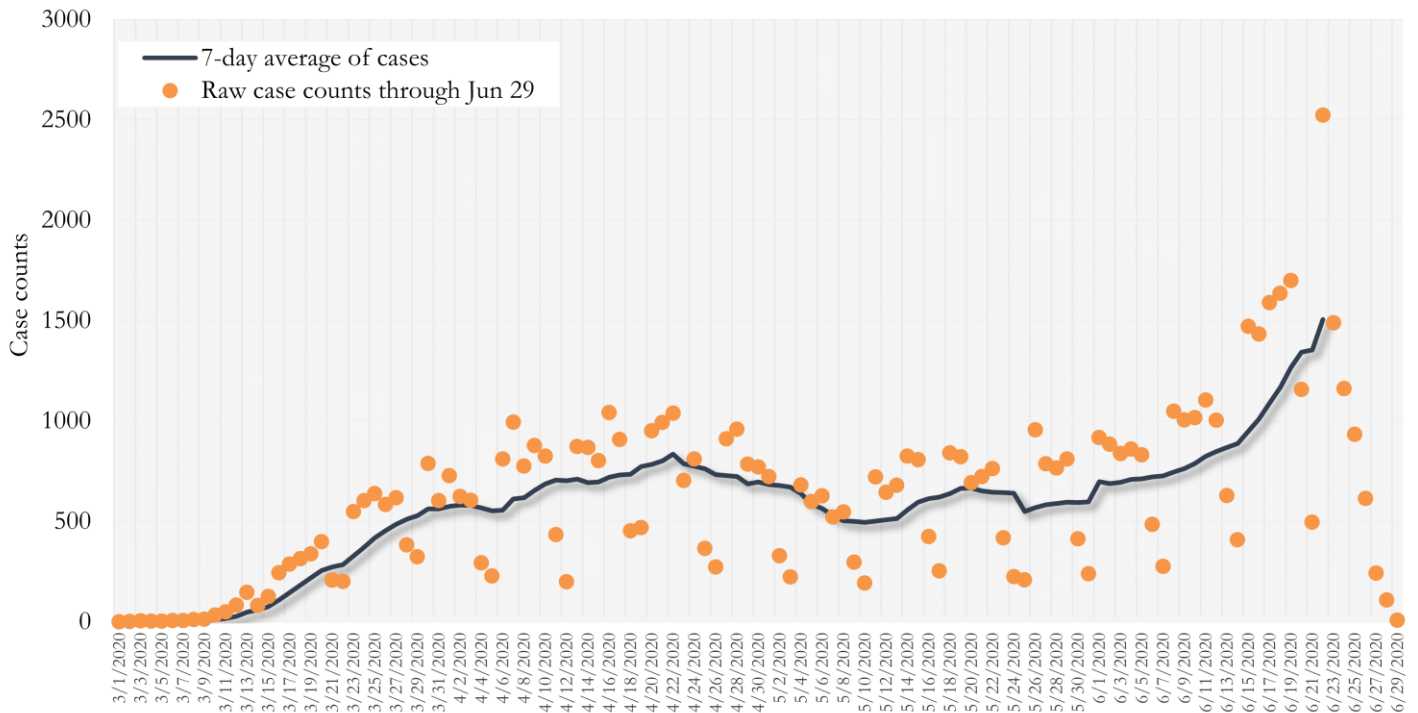


**Fig. 11. New COVID-19 Cases in Fulton County Daily (Averaged over 7 days)  
Mar 01, 2020 - Jun 22, 2020**



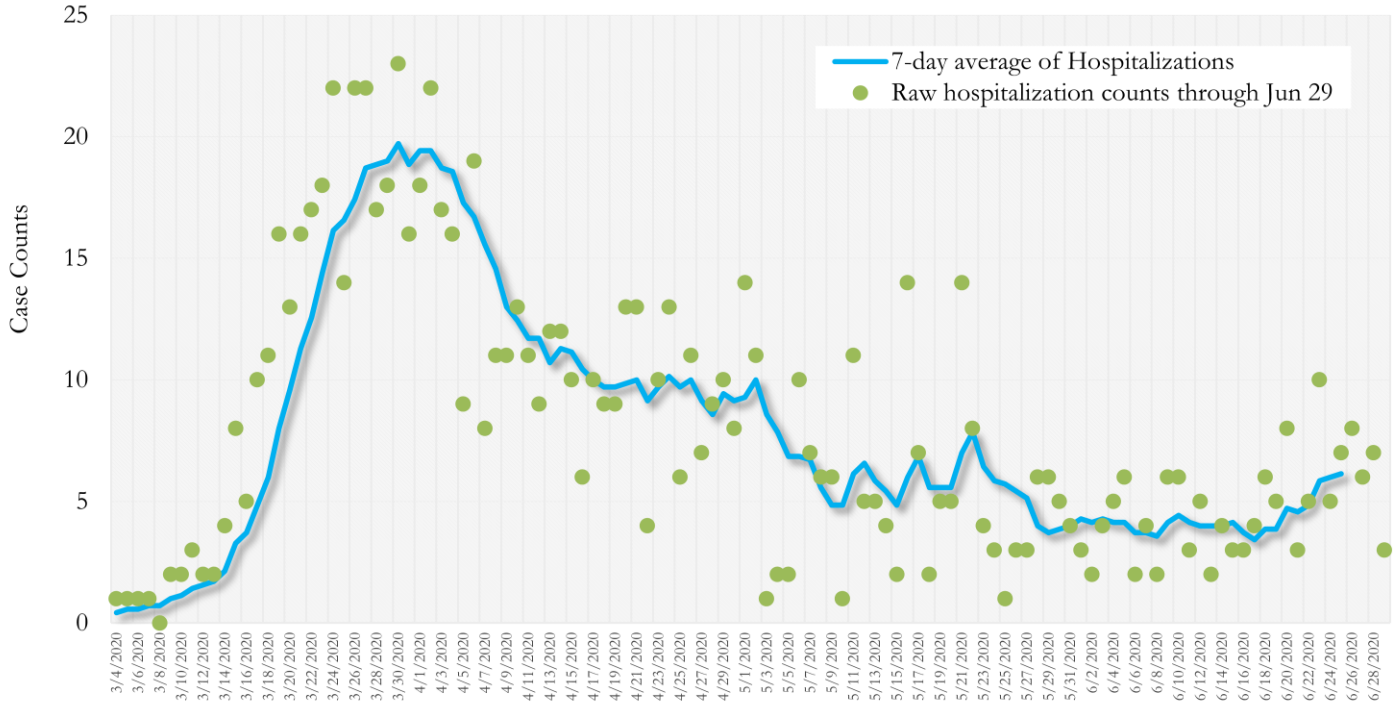
\*Date of collection of first positive sample used (report creation date used where sample collection date is missing).

**Fig. 10. New COVID-19 Cases in Georgia State Daily (Averaged over 7 days)  
Mar 01, 2020 - Jun 22, 2020**



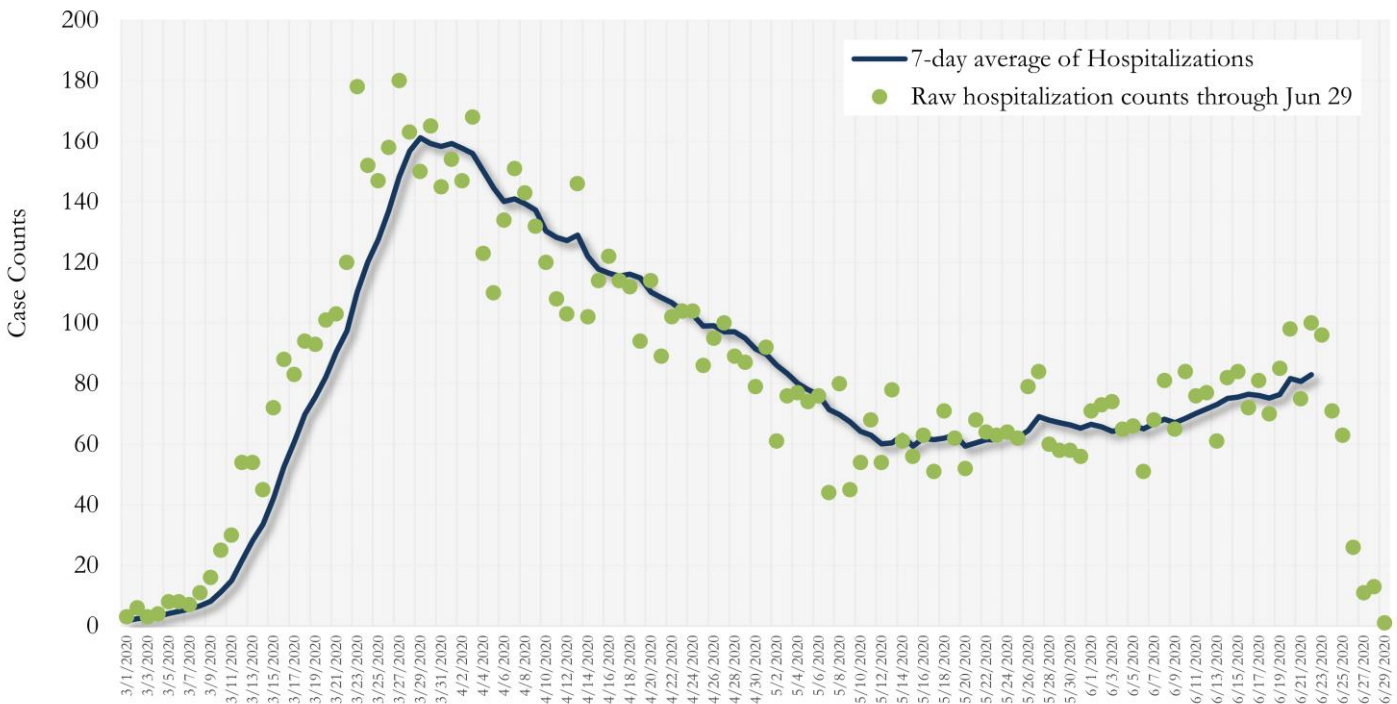
\*Date of collection of first positive sample used (report creation date used where sample collection date is missing).

**Fig. 11. COVID-19 Hospitalizations in Fulton County Daily (Averaged over 7 days)  
Mar 01, 2020 - Jun 22, 2020**



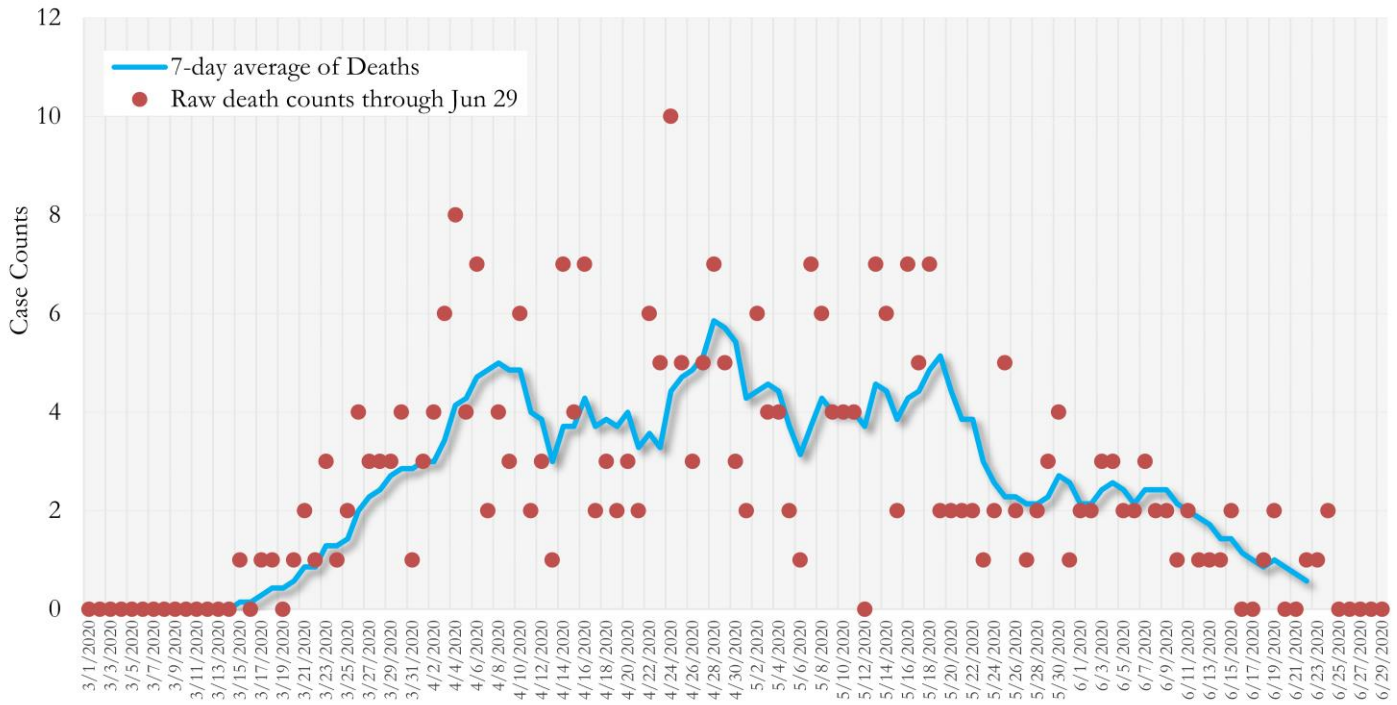
\*Date of collection of first positive sample used (report creation date used where sample collection date is missing).

**Fig. 12. COVID-19 Hospitalizations in Georgia State Daily (Averaged over 7 days)  
March 01, 2020 - Jun 22, 2020**



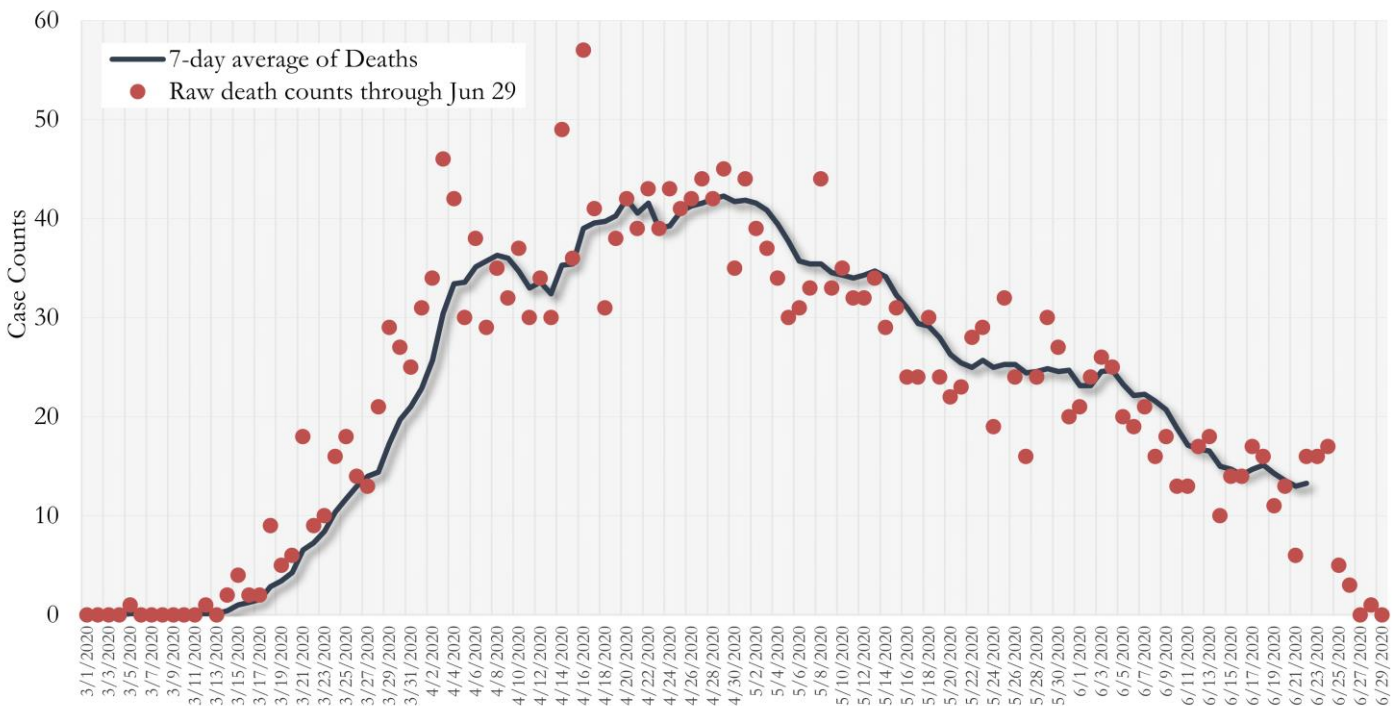
\*Date of collection of first positive sample used (report creation date used where sample collection date is missing).

**Fig. 13. COVID-19 Deaths in Fulton County Daily (Averaged over 7 days)  
Mar 01, 2020 - Jun 01, 2020**



\*Reported date of death used.

**Fig. 14. COVID-19 Deaths in Georgia State Daily (Averaged over 7 days)  
Mar 01, 2020 - Jun 22, 2020**

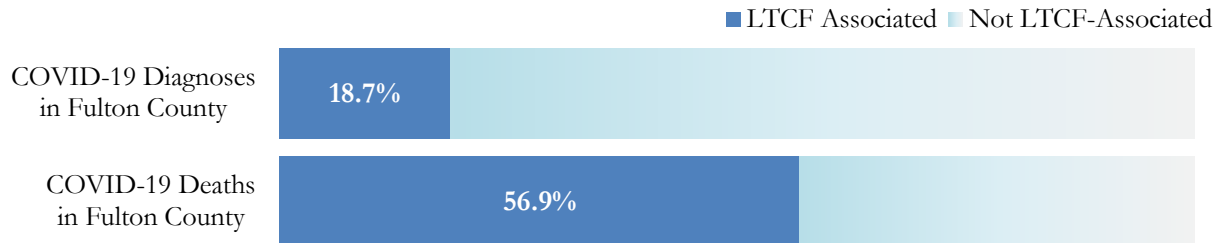


\* Reported date of death used.

## COVID-19 IN LONG-TERM CARE FACILITIES IN FULTON

Older persons (aged 65 years and older) and persons who live in nursing homes or other long-term care facilities seem to be at higher risk for developing more serious complications from COVID-19. Extra precautions are recommended for individuals within this risk groups – Centers for Disease Control and Prevention (CDC 2020) <https://www.cdc.gov/coronavirus/2019-ncov/need-extra-precautions/people-at-higher-risk.html>

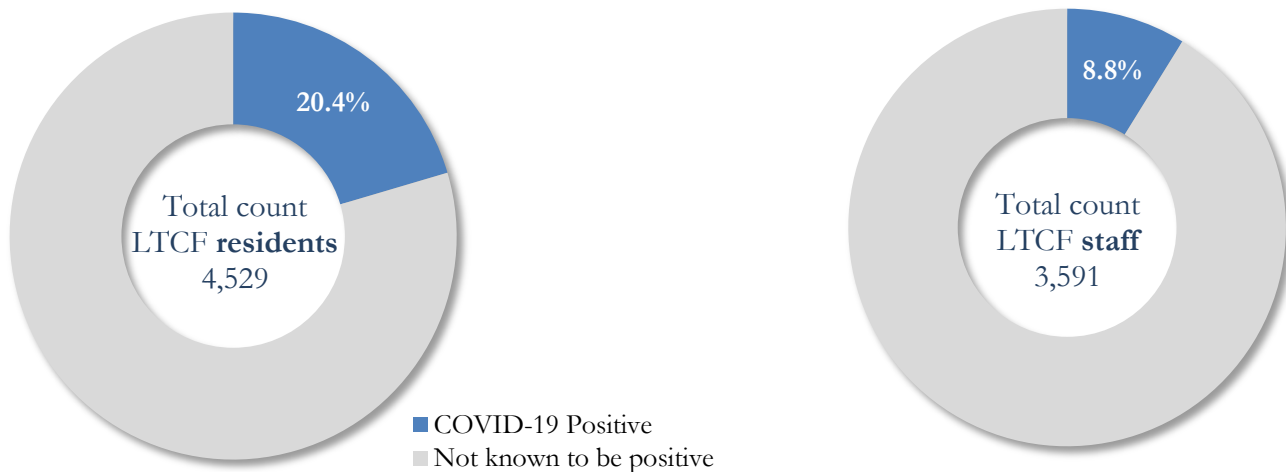
### COVID-19 Diagnoses and Deaths in Fulton County Associated with Long-Term Care Facilities (6/29/20)



\*\*\*LTCF → Long-term Care Facility (Includes residents and Staff)\*\*\*

**COVID-19 POSITIVITY:** COVID-19 testing is currently being provided at various long-term care facilities in Fulton County through the efforts of the Board of Health and the National Guard. See <https://dch.georgia.gov/> for a line listing of COVID-19 cases at all facilities in Georgia.

### COVID-19 Positivity at 53 reporting Long-Term Care Facilities (LTCF) in Fulton County (6/29/20)



### COVID-19 Cases, Hospitalizations, and Deaths among 53 reporting Long-Term Care Facilities in Fulton County (6/29/20)

	LTCF Residents (n=4,529)			LTCF Staff (n=3,591)		
	Cases	Hospitalizations	Deaths	Cases	Hospitalizations	Deaths
<b>Average</b> (count per fac.) <sup>1</sup>	17	5	3	6	0	<0.1
<b>Median</b> (count per fac.) <sup>1</sup>	3	3	0	2	0	0
<b>Lowest counts</b>	0	0	0	0	0	0
<b>Highest counts</b>	136	48	29	41	8	1
<b>Total Count</b>	<b>925 (20.4%)<sup>a</sup></b>	<b>252 (27.2%)<sup>b</sup></b>	<b>176 (19.0%)<sup>b</sup></b>	<b>317 (8.8%)<sup>a</sup></b>	<b>26 (8.2%)<sup>b</sup></b>	<b>1 (0.3%)<sup>b</sup></b>

<sup>a</sup> Percentage shown reflects proportion of total residents/staff tested who were positive (i.e. COVID-19 Positivity). | <sup>b</sup> Percentages shown are proportions of persons residents/staff diagnosed with COVID-19 who were hospitalized or died after diagnoses.