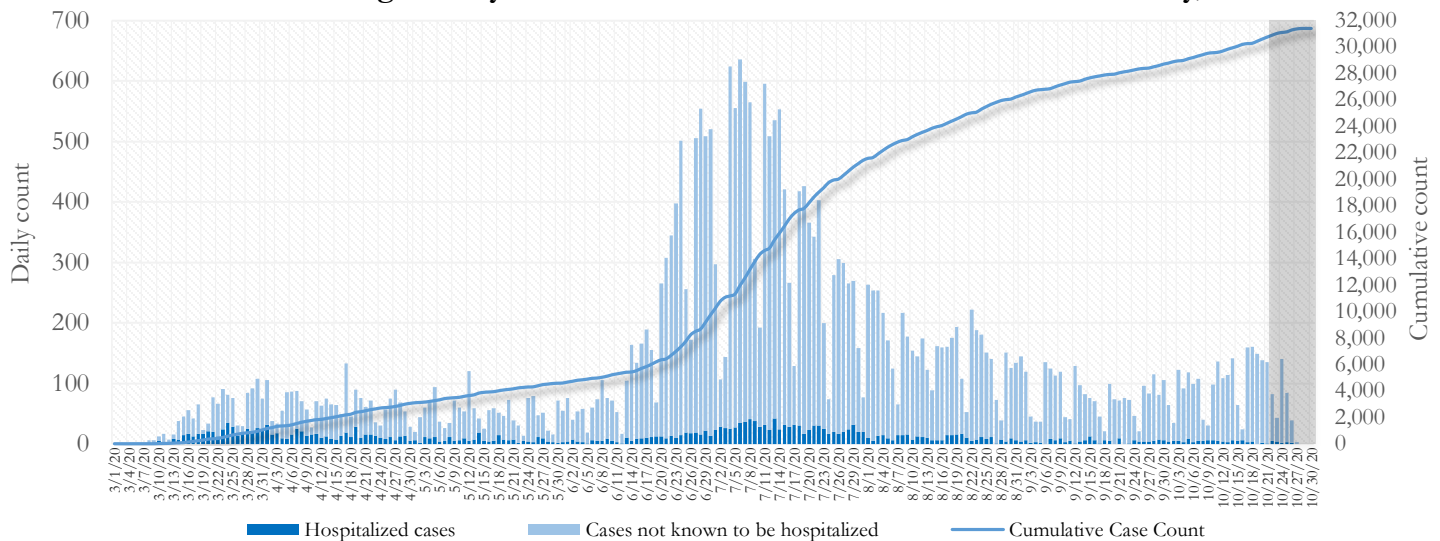


SUMMARY

- As of October 30, 2020, Fulton County has recorded **31,416 cases of the 2019 novel coronavirus (COVID-19)** and **627 confirmed COVID-19 deaths**. 81 deaths are currently being reviewed by GA DPH to confirm cause of death.
- Of **1,604 new diagnoses** made between October 10 and October 23, the central portion of the county (Atlanta metro) accounted for 45% while the northern and southern parts accounted for 30% and 21% respectively.
- By city, new COVID-19 case rates range from 68.6 per 100,000 persons (Palmetto) to 258.3 per 100,000 persons (Hapeville). [**Fulton County Diagnoses Rates (per 100,000 persons): Cumulative – 2858.1; Incidence –145.9**]. See map showing incident case rate by ZIP code on Pg.17.
- Among all persons diagnosed with COVID-19 in Fulton County since June 1, **6.2% required hospitalization and 1.3% died**.
- Of all testing done in Fulton County between October 12 and October 25, the **percent positivity rate was 4.6%**.

Fig 1. Daily and Cumulative COVID-19 cases in Fulton County, GA



*Counts shown reflect the number of confirmed cases as of 7:30 am on 10/30/20 using the date of first positive sample collection. Where date of sample collection was not available or missing, the date of report creation in GA SENDSS was used instead. **Note:** Delays in data reporting may cause changes in data counts, particularly in the shaded portion. Data throughout this report are preliminary and subject to ongoing data cleaning processes, and thus are subject to change.

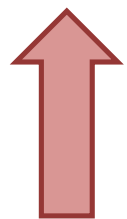
DISTRIBUTION OF COVID-19 CASES BY REGION

New cases: 45% of the new COVID-19 cases in the past 2 weeks occurred in Atlanta while 30% and 21% occurred in the Northern and Southern regions of the county respectively.

| Fulton Region | % Cumulative count | % New cases* |
|------------------------|--------------------|--------------|
| Atlanta | 44.2% | 45.1% |
| North ¹ | 28.7% | 29.5% |
| South ² | 20.4% | 20.5% |
| Unincorporated/Unknown | 6.6% | 4.9% |

¹Includes all Fulton County cities north of Atlanta metro (Alpharetta, Milton, Johns Creek, Roswell, Sandy Springs, Mountain Park) ²Includes all cities south of Atlanta (College Park, Chattahoochee Hills, East Point, Hapeville, Palmetto, South Fulton, Fairburn, and Union City) ***New cases:** Cases diagnosed in the past 2 weeks only (between 10/10/20 – 10/23/20).

In the recent two week reporting period (10/10-10/23), there were more new cases of COVID-19 in Fulton County than the previous two weeks (9/26-10/9).



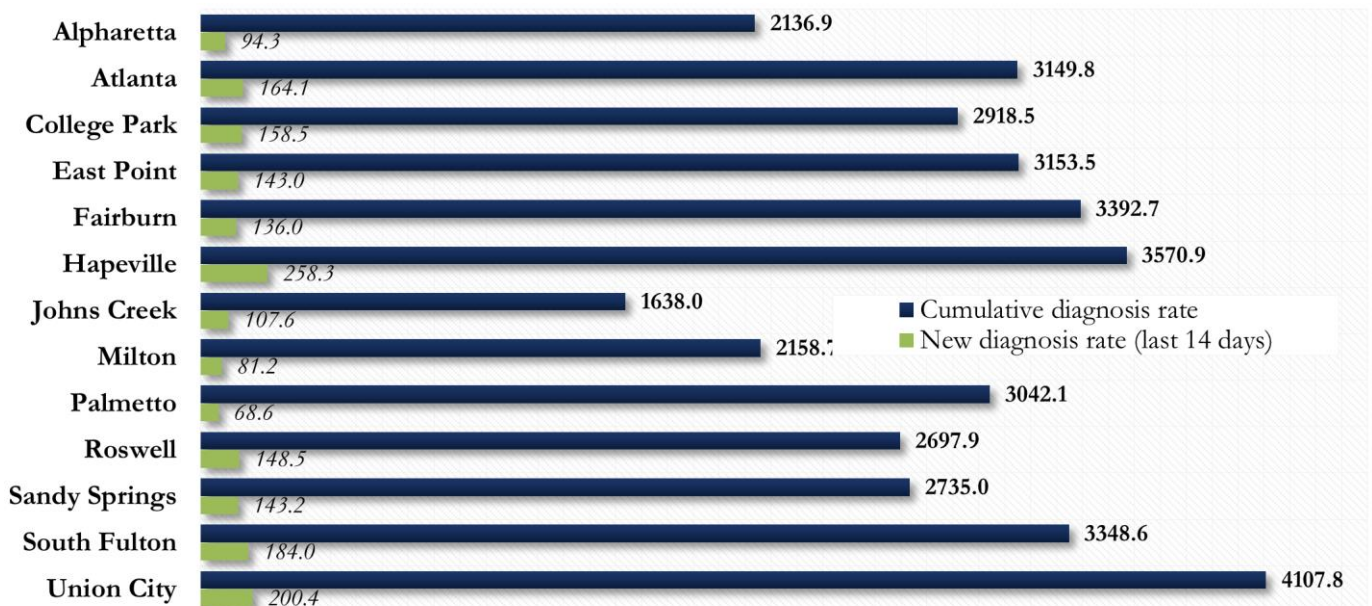
*Delayed a week to account for testing results turnaround time.

COVID-19 CASE COUNTS AND RATES BY CITY

| | Prior (10/27/20) | Current Total (10/30/20) | | | New Cases (Period: 9/26/20 – 10/23/20) ¹ | | | |
|---------------------|------------------|--------------------------|-------|------------------------|---|-------------------------|-----------------------|--------------------------------|
| | Count | Count | % | Cum. Rate ² | Recent 14 d. (10/10–10/23) | Prior 14 d. (9/26–10/9) | % change ³ | Rate ⁴ (Last 14 d). |
| Alpharetta | 1364 | 1382 | 4.4% | 2136.9 | 61 | 70 | ↓ 12.9% | 94.3 |
| Atlanta | 13697 | 13896 | 44.2% | 3149.8 | 724 | 463 | ↑ 56.4% | 164.1 |
| Chattahoochee Hills | 1 | 1 | 0.0% | - | 0 | 0 | - | - |
| College Park | 395 | 405 | 1.3% | 2918.5 | 22 | 10 | ↑ 120.0% | 158.5 |
| East Point | 1086 | 1103 | 3.5% | 3153.5 | 50 | 32 | ↑ 56.3% | 143.0 |
| Fairburn | 493 | 499 | 1.6% | 3392.7 | 20 | 19 | ↑ 5.3% | 136.0 |
| Hapeville | 228 | 235 | 0.7% | 3570.9 | 17 | <10 | ↑ 112.5% | 258.3 |
| Johns Creek | 1360 | 1370 | 4.4% | 1638.0 | 90 | 65 | ↑ 38.5% | 107.6 |
| Milton | 814 | 824 | 2.6% | 2158.7 | 31 | 42 | ↓ 26.2% | 81.2 |
| Mountain Park | 7 | 7 | 0.0% | 1120.0 | 0 | 0 | - | - |
| Palmetto | 132 | 133 | 0.4% | 3042.1 | <10 | 10 | ↓ 70.0% | 68.6 |
| Roswell | 2512 | 2543 | 8.1% | 2697.9 | 140 | 118 | ↑ 18.6% | 148.5 |
| Sandy Springs | 2842 | 2883 | 9.2% | 2735.0 | 151 | 136 | ↑ 11.0% | 143.2 |
| South Fulton | 3156 | 3185 | 10.1% | 3348.6 | 175 | 115 | ↑ 52.2% | 184.0 |
| Union City | 856 | 861 | 2.7% | 4107.8 | 42 | 35 | ↑ 20.0% | 200.4 |
| Unknown | 2473 | 2089 | 6.6% | - | 77 | 29 | - | - |

¹**New cases:** Cases diagnosed in most recent 28 days (based on reported dates of positive sample collection). To allow for lag in reporting results of new diagnoses from samples collected in the most recent week, data used for incident diagnoses analyses were moved back by one week. ²**Cumulative diagnosis rate:** Population estimates from US Census Bureau used to calculate cumulative diagnoses rate. All rates shown are per 100,000 persons. ³**% change:** These reflect the percentage increase or decrease in new diagnoses between the 14 days preceding the most recent 7 days and the 14 days preceding that. ⁴**(Incidence) Rate:** Rate of new diagnoses in the last 14 day period preceding the immediate past week. ****Data cleaning** (either during case interviews or address geo-coding) may lead to reassignment of few cases from one territory to another based on their corrected addresses. These may appear as “decreases” when compared to the previous day’s count. These do not reflect errors in the data collection or analysis process but only reflect the minor day-to-day fluctuations in case counts that arise in an evolving public health database like COVID’s. **Note:** All data reported are preliminary and subject to change.

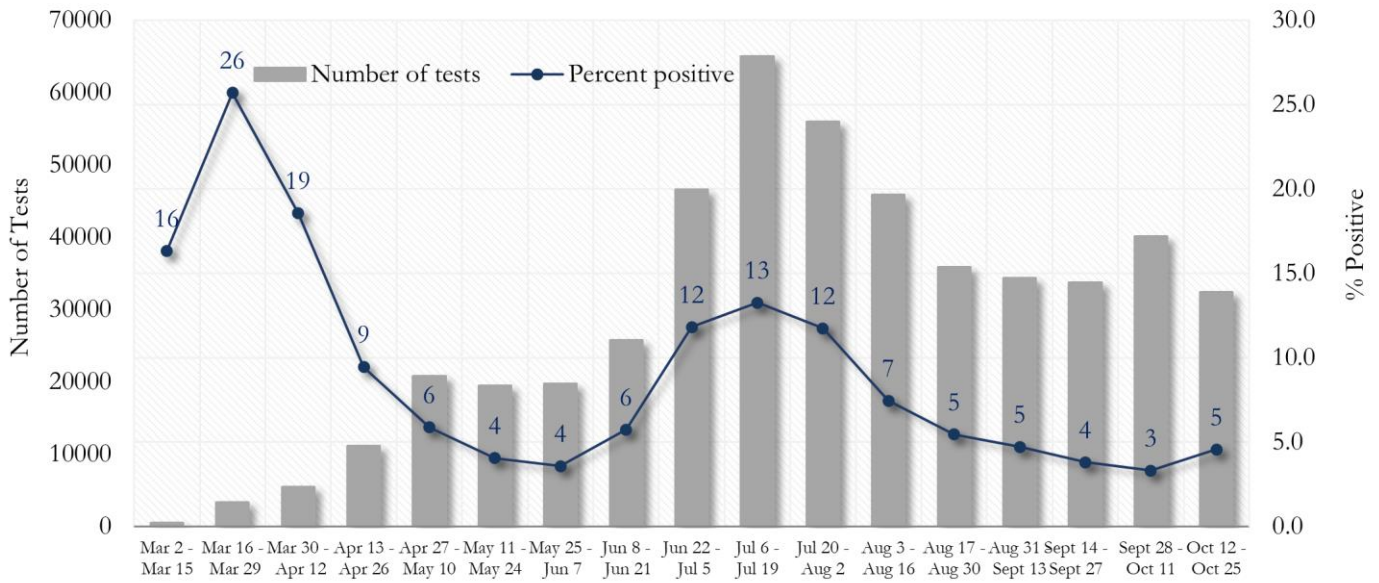
Fig. 2. Incident & Cumulative Diagnoses Rates for COVID-19 by City



*Rates shown are per 100,000 persons | **Note:** Mass testing in specific locations (e.g. long term care facilities) may cause sharp increases in the cumulative rate of COVID-19 diagnosis in those territories. All data shown are preliminary and are subject to change as testing results get updated.

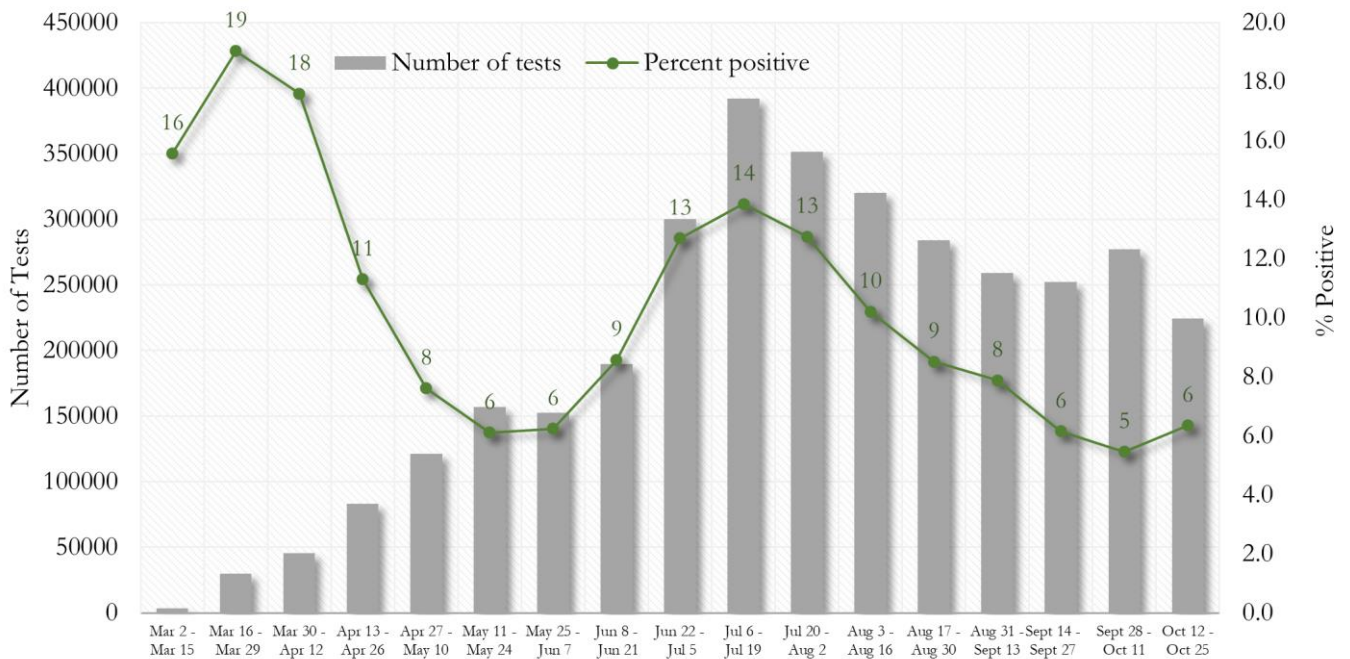
COVID-19 TESTING AND POSITIVITY IN FULTON COUNTY AND GEORGIA

Fig. 3. Trends in Positive COVID-19 Tests in Fulton County by 14-day Periods



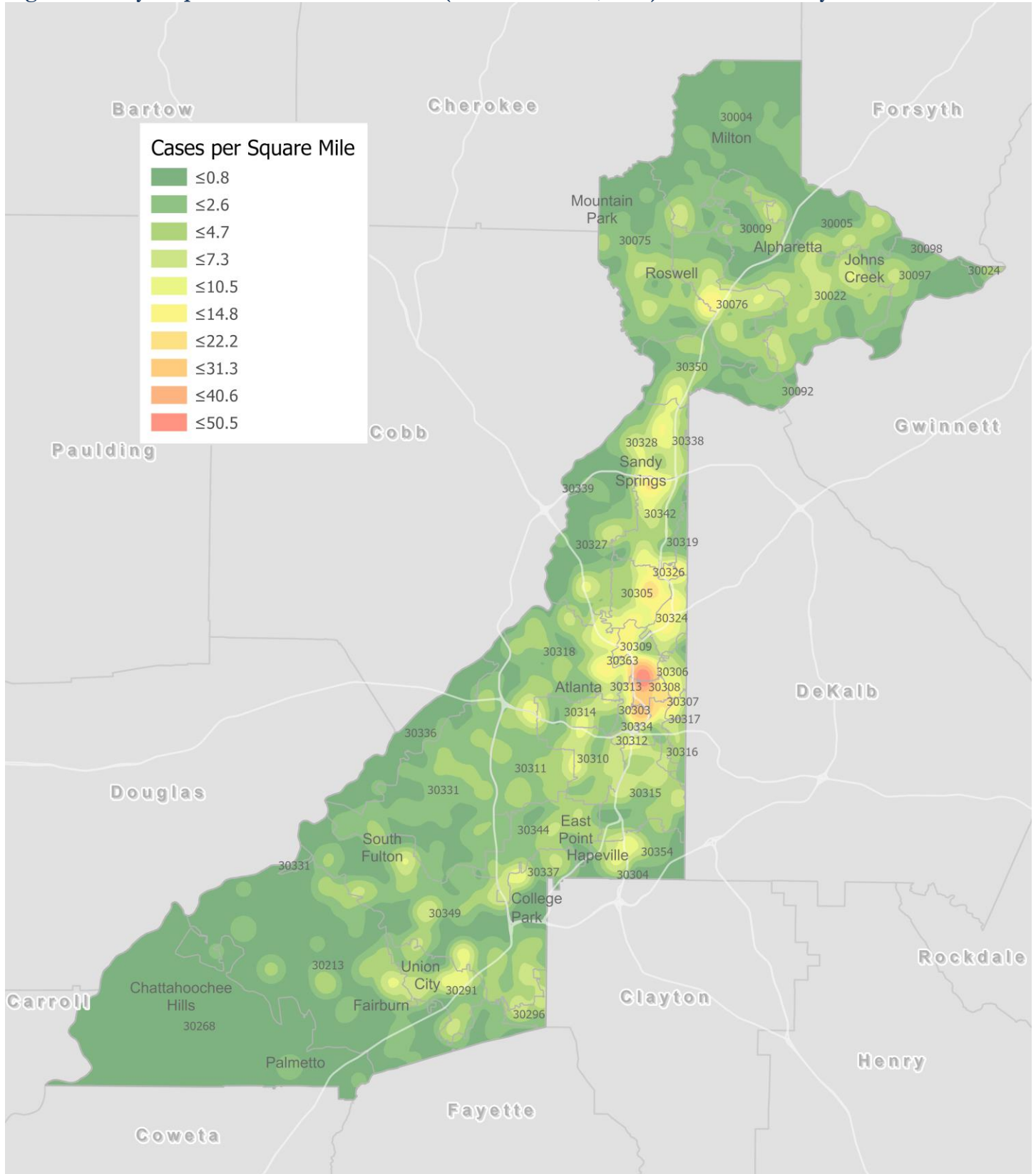
*Data on Polymerase Chain Reaction (PCR) tests only included.

Fig. 4. Trends in Positive COVID-19 Tests in Georgia by 14-day Periods



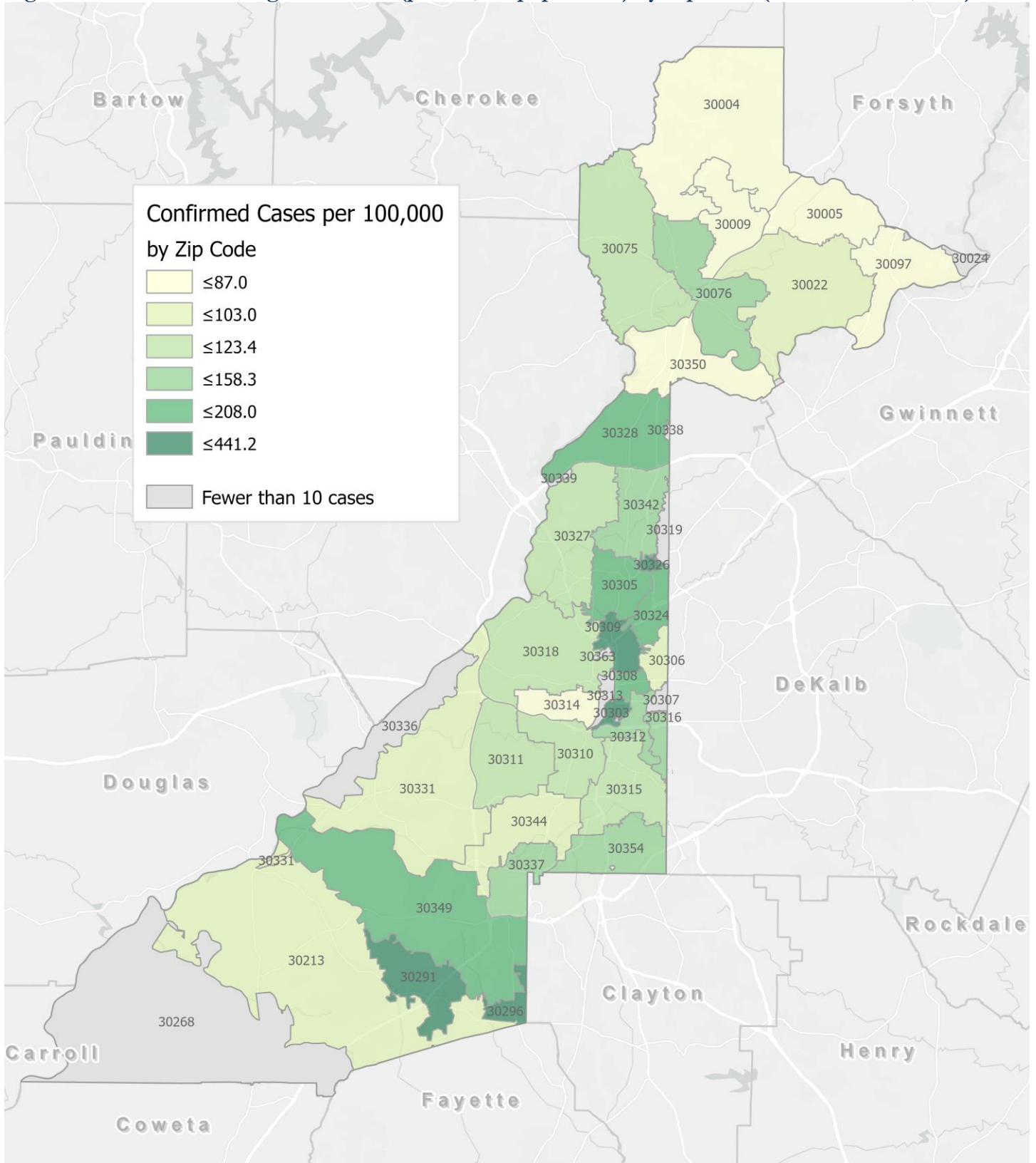
*Data on Polymerase Chain Reaction (PCR) tests only included.

Fig. 5. Density Map – New COVID-19 Cases (Oct 10 – Oct 23, 2020) in Fulton County



New COVID-19 cases: Cases diagnosed in most recent 14 days (based on reported dates of positive sample collection). To allow for lag in reporting results of positive cases from samples collected in the immediate past 7 days, data used for incident diagnoses analyses are moved back by one week. Map reflects new COVID-19 cases diagnosed between Oct 10th and Oct 23rd, 2020 across Fulton County, excluding LTCF cases.

Fig. 6. New COVID-19 Diagnoses Rates (per 100,000 population) by Zip Code (Oct 10– Oct 23, 2020)



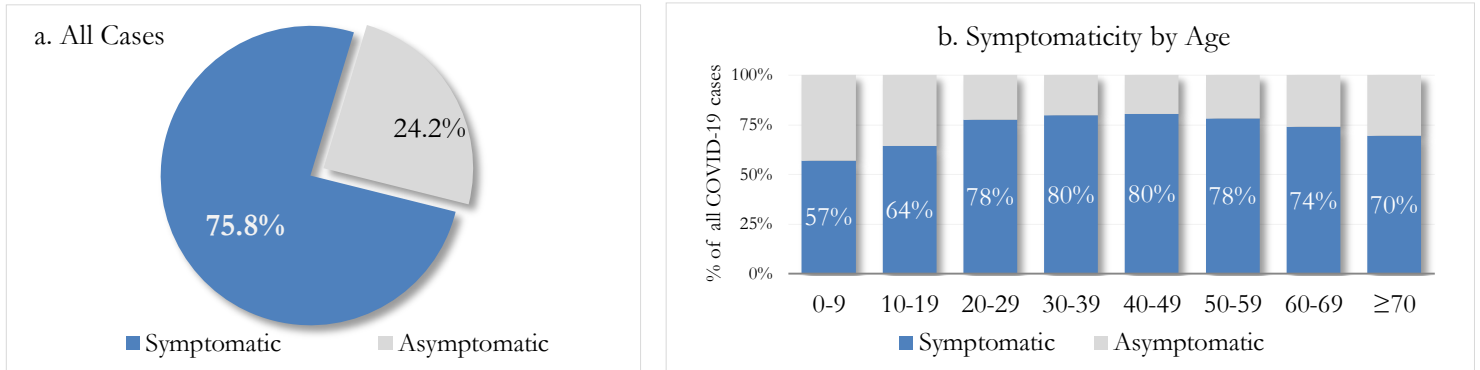
*Rates shown are per 100,000 populations.

New COVID-19 cases: Cases diagnosed in most recent 14 days (based on reported dates of positive sample collection). To allow for lag in reporting results of positive cases from samples collected in the immediate past 7 days, data used for incident diagnoses analyses are moved back by one week. Data used excludes outbreak-related cases at long-term care facilities and map shown reflects only the new non-LTCF cases diagnosed between the dates shown in map title. See page 17 for zip code break down table.

REPORTING SYMPTOMS AMONG PERSONS WITH COVID-19 IN FULTON

People with COVID-19 have reported a wide range of symptoms ranging from mild symptoms to severe illness. Symptoms may appear 2-14 days after exposure to the virus. Symptoms reported include: cough, shortness of breath/difficulty breathing, fever, chills, muscle pain, headache, sore throat, congestion, nausea or vomiting, diarrhea, or new loss of taste or smell – Centers for Disease Control and Prevention (CDC)
<https://www.cdc.gov/coronavirus/2019-ncov/symptoms-testing/symptoms.html>

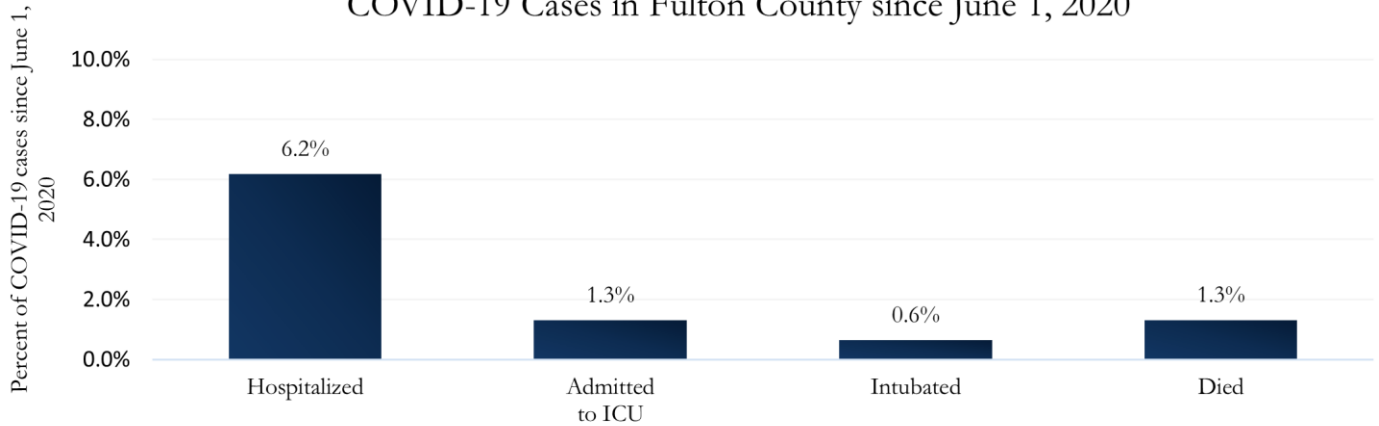
Fig. 7a & b. Total Proportion Reporting Symptoms in Fulton County



COVID-19 cases who have been case interviewed or had medical charts reviewed as of 10/30/20 only. n = 21,179

COVID-19 HOSPITALIZATIONS, ICU ADMISSIONS AND DEATHS IN FULTON

Fig. 8. Hospitalizations, ICU Admissions, Intubations, and Deaths among COVID-19 Cases in Fulton County since June 1, 2020



DEMOGRAPHIC DISTRIBUTIONS – COVID-19 CASES AND DEATHS

A. Distribution of COVID-19 cases by gender, age, and race in Fulton County by Fulton Region

| | North Fulton Cities ¹ Count (%) | Atlanta Count (%) | South Fulton Cities ² Count (%) | Unknown City Count (%) | All Fulton Count (%) |
|-----------------------------|---|----------------------|---|---------------------------|-------------------------|
| Total COVID-19 cases | 9009 | 13896 | 6422 | 2089 | 31416 |
| Gender: Female | 4604 (51.1%) | 6764 (48.7%) | 3593 (55.9%) | 1015 (48.6%) | 15976 (50.9%) |
| Male | 4244 (47.1%) | 6691 (48.2%) | 2688 (41.9%) | 1004 (48.1%) | 14627 (46.6%) |
| Unknown* | 161 (1.8%) | 441 (3.2%) | 141 (2.2%) | 70 (3.4%) | 813 (2.6%) |
| Age: 0-9 | 311 (3.5%) | 266 (1.9%) | 210 (3.3%) | 52 (2.5%) | 839 (2.7%) |
| 10-19 | 1323 (14.7%) | 1054 (7.6%) | 466 (7.3%) | 143 (6.8%) | 2986 (9.5%) |
| 20-29 | 1976 (21.9%) | 4180 (30.1%) | 1239 (19.3%) | 550 (26.3%) | 7945 (25.3%) |
| 30-39 | 1391 (15.4%) | 3035 (21.8%) | 1338 (20.8%) | 463 (22.2%) | 6227 (19.8%) |
| 40-49 | 1410 (15.7%) | 1790 (12.9%) | 1171 (18.2%) | 318 (15.2%) | 4689 (14.9%) |
| 50-59 | 1305 (14.5%) | 1459 (10.5%) | 870 (13.5%) | 257 (12.3%) | 3891 (12.4%) |
| 60-69 | 678 (7.5%) | 963 (6.9%) | 582 (9.1%) | 163 (7.8%) | 2386 (7.6%) |
| ≥70 | 608 (6.7%) | 1100 (7.9%) | 541 (8.4%) | 134 (6.4%) | 2383 (7.6%) |
| Unknown* | <10 | 49 (0.4%) | <10 | <10 | 70 (0.2%) |
| Race: Asian, NH | 330 (3.7%) | 239 (1.7%) | 25 (0.4%) | 31 (1.5%) | 625 (2.0%) |
| Black, NH | 1000 (11.1%) | 6073 (43.7%) | 4464 (69.5%) | 728 (34.8%) | 12265 (39.0%) |
| White, NH | 3804 (42.2%) | 3453 (24.8%) | 301 (4.7%) | 499 (23.9%) | 8057 (25.6%) |
| Hispanic | 1742 (19.3%) | 909 (6.5%) | 537 (8.4%) | 200 (9.6%) | 3388 (10.8%) |
| Other, NH | 333 (3.7%) | 530 (3.8%) | 175 (2.7%) | 81 (3.9%) | 1119 (3.6%) |
| Unknown* | 1800 (20.0%) | 2692 (19.4%) | 920 (14.3%) | 550 (26.3%) | 5962 (19.0%) |

*Unknown includes cases not yet interviewed.

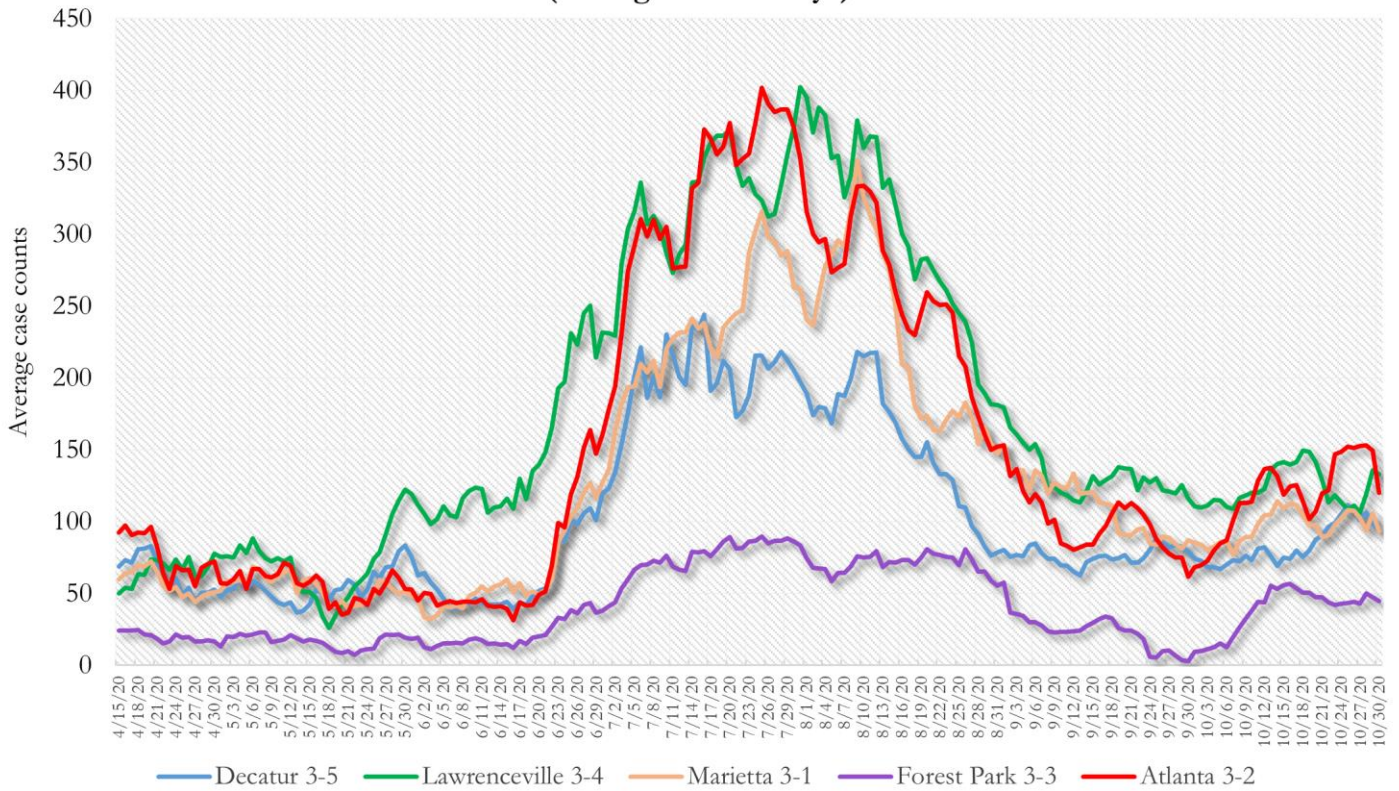
B. Distribution of COVID-19 deaths by gender, age, and race in Fulton County by Fulton Region

| | North Fulton Cities ¹ Count (%) | Atlanta Count (%) | South Fulton Cities ² Count (%) | Unknown City Count (%) | All Fulton Count (%) |
|------------------------------|---|----------------------|---|---------------------------|-------------------------|
| Total COVID-19 deaths | 137 | 303 | 167 | 20 | 627 |
| Gender: Female | 62 (45.3%) | 137 (45.2%) | 86 (51.5%) | 10 (50.0%) | 295 (47.0%) |
| Male | 75 (54.7%) | 166 (54.8%) | 81 (48.5%) | 10 (50.0%) | 332 (53.0%) |
| Unknown | 0 | 0 | 0 | 0 | 0 |
| Age: ≤ 29 | <10 | <10 | <10 | 0 | <10 |
| 30-39 | <10 | <10 | <10 | <10 | 13 (2.1%) |
| 40-49 | <10 | <10 | 10 (6.0%) | <10 | 26 (4.1%) |
| 50-59 | <10 | 25 (8.3%) | 18 (10.8%) | <10 | 53 (8.5%) |
| 60-69 | 16 (11.7%) | 60 (19.8%) | 37 (22.2%) | <10 | 114 (18.2%) |
| ≥70 | 107 (78.1%) | 197 (65.0%) | 98 (58.7%) | 13 (65.0%) | 415 (66.2%) |
| Unknown | 0 | <10 | 0 | 0 | <10 |
| Race: Asian, NH | <10 | <10 | <10 | 0 | 10 (1.6%) |
| Black, NH | 23 (16.8%) | 254 (83.8%) | 138 (82.6%) | <10 | 424 (67.6%) |
| White, NH | 95 (69.3%) | 38 (12.5%) | 20 (12.0%) | 10 (50.0%) | 163 (26.0%) |
| Hispanic | 14 (10.2%) | <10 | <10 | <10 | 25 (4.0%) |
| Other, NH | 0 | <10 | <10 | 0 | <10 |
| Unknown | <10 | <10 | 0 | 0 | <10 |

¹Includes all Fulton County cities north of Atlanta metro (Alpharetta, Milton, Johns Creek, Roswell, Sandy Springs, Mountain Park) ²Includes all cities south of Atlanta (College Park, Chattahoochee Hills, East Point, Hapeville, Palmetto, South Fulton, Fairburn, Union City). **Note:** All data reported are preliminary and subject to change. This table includes data on all confirmed COVID-19 deaths and is subject to change as GA DPH completes cause of death confirmation processes.

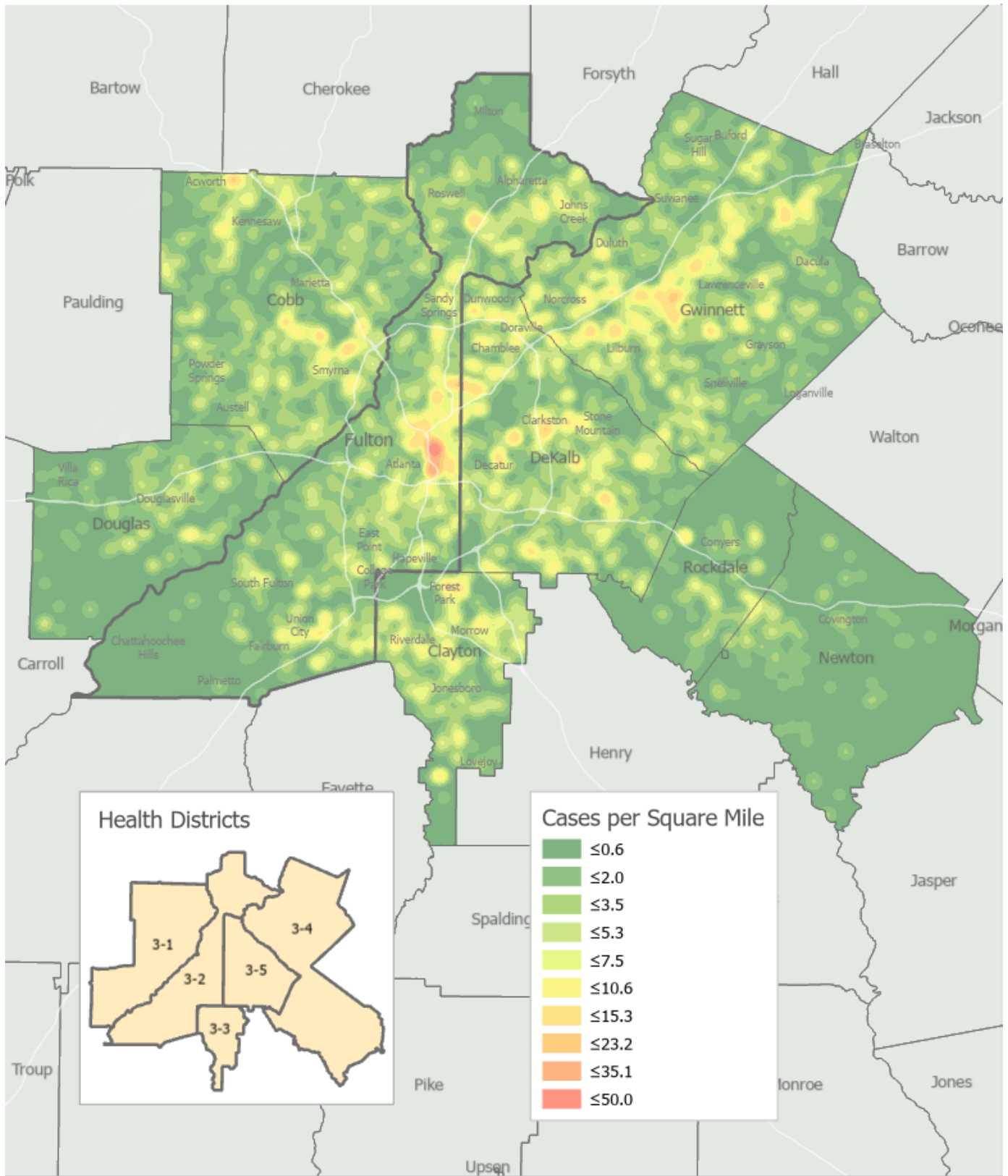
COVID-19 CASE TRENDS IN FULTON AND SURROUNDING DISTRICTS

**Fig. 9. Daily Case Counts for Atlanta Metro Districts
(Averaged over 7 days)**



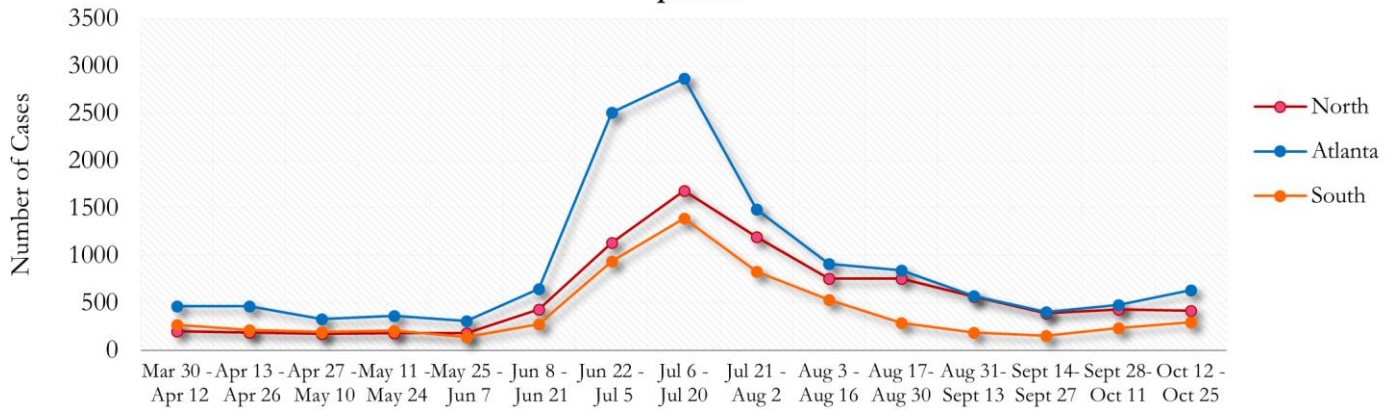
*Graph shows the average number of cases calculated from the daily cumulative case counts in the metro Atlanta districts. Increases in daily cumulative case counts may include cases diagnosed earlier during the pandemic but were only recently reported to the state as cases diagnosed belonging to these districts.

Fig. 10. COVID-19 Cases in Fulton County and Surrounding Districts (Oct 10 – Oct 23, 2020)



TRENDS IN COVID-19 CASES AMONG DEMOGRAPHIC GROUPS (14 DAY PERIODS)

Fig. 11. Trends in Geographic distribution of COVID-19 Cases in Fulton County by 14-day periods



In the past two weeks, the city of Atlanta accounted for the majority of new cases.

*North - Includes all Fulton cities north of Atlanta (Alpharetta, Milton, Johns Creek, Roswell, Sandy Springs, Mountain Park)

*South - Includes all Fulton cities south of Atlanta (College Park, Chattahoochee Hills, East Point, Hapeville, Palmetto, South Fulton, Fairburn, and Union City)

Fig. 12. Trends in Racial Distribution of COVID-19 Cases in Fulton County by 14-day periods

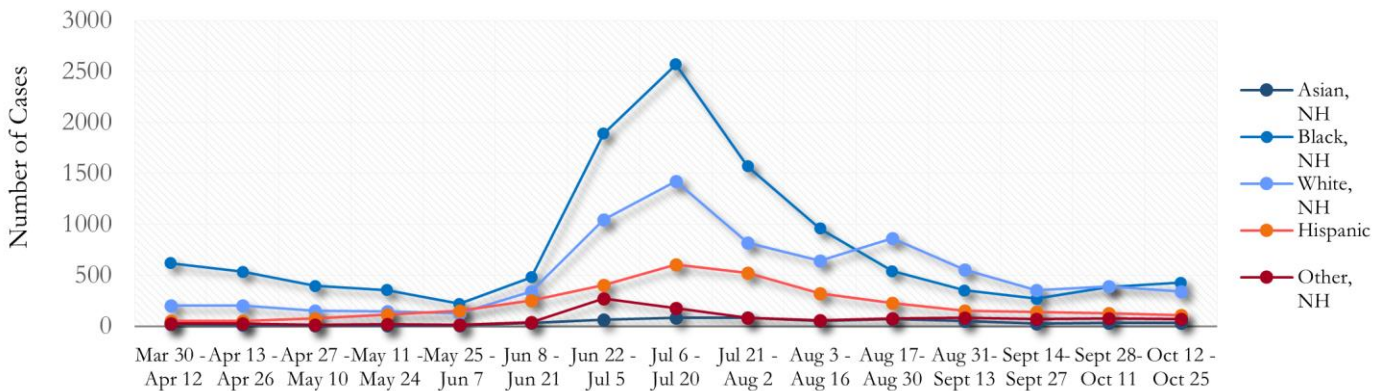
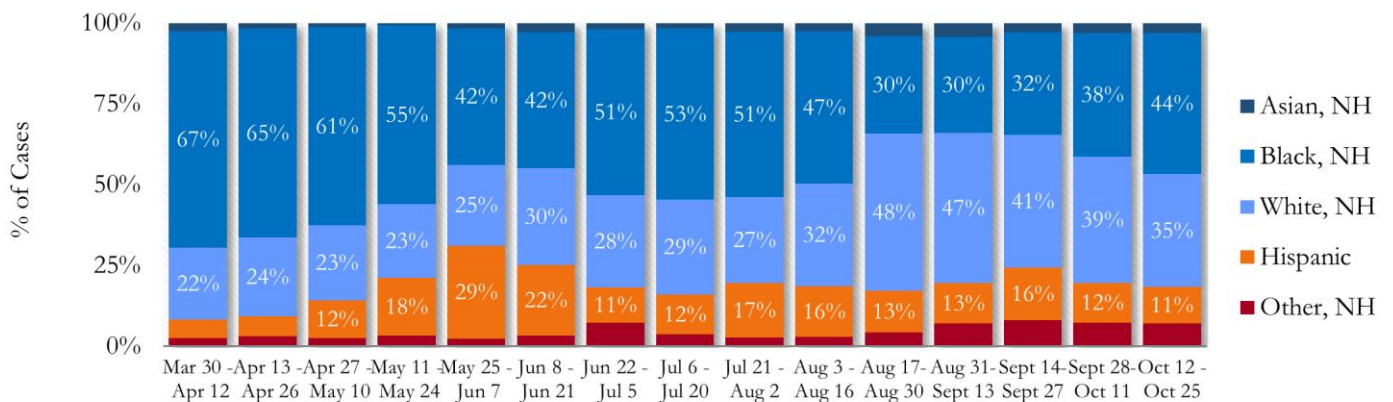


Fig. 13. Racial Distribution of COVID-19 Cases in Fulton County by 14-day periods



About 20% of COVID cases are missing data on patient race and ethnicity. The majority of new cases in the past two weeks were Black, NH (44%) and White, NH (35%).

Fig. 14. Trends in Gender Distribution of COVID-19 Cases in Fulton County by 14-day periods

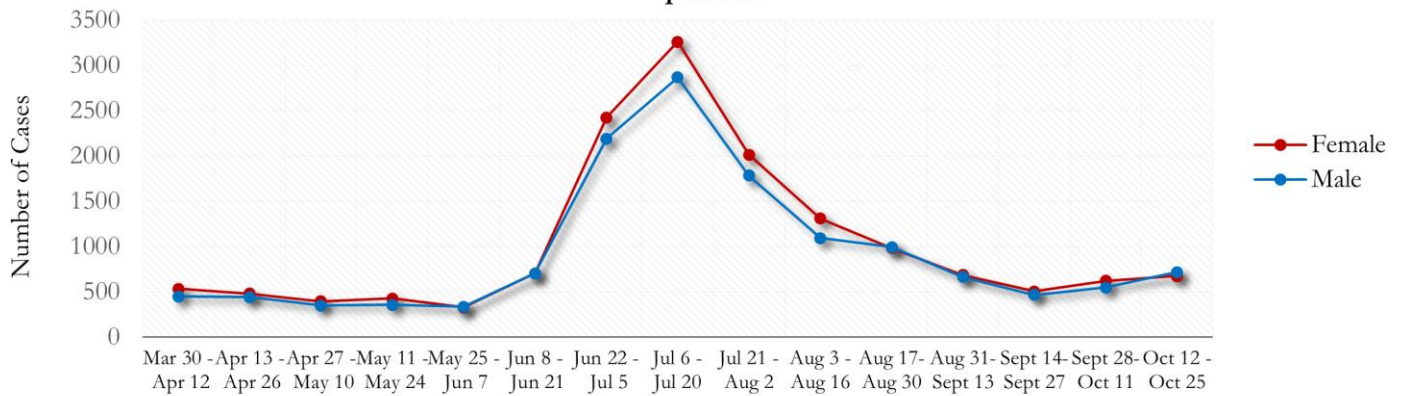
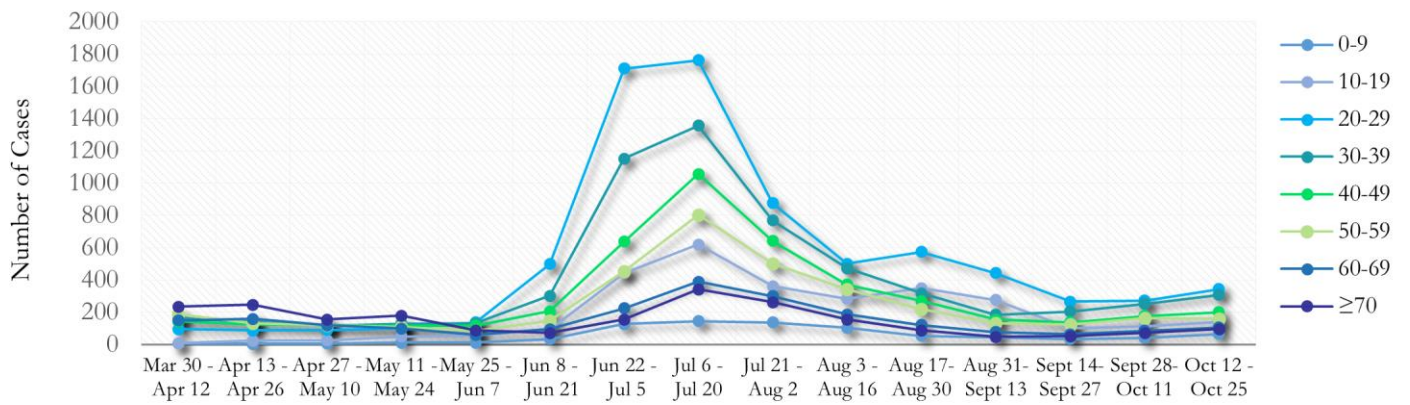
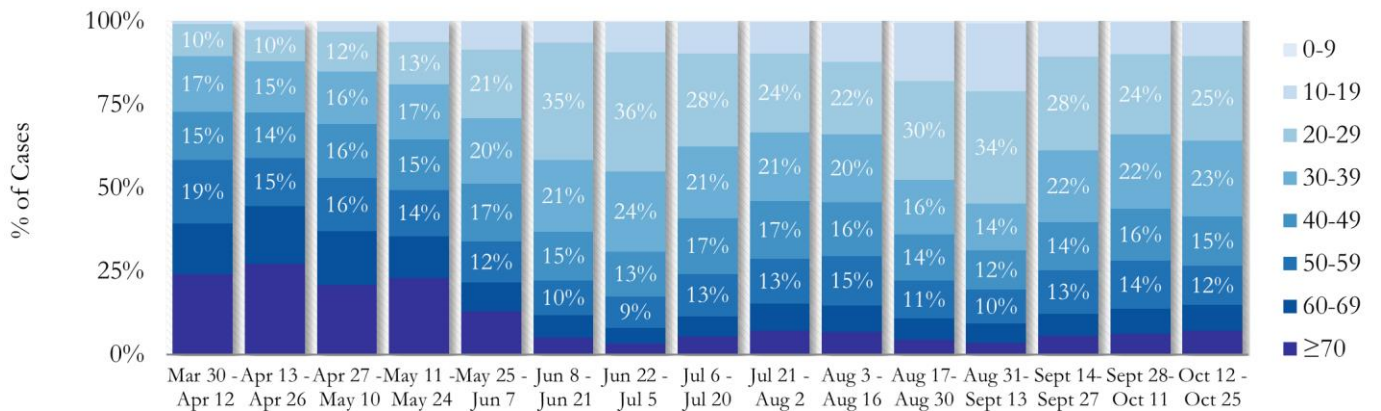


Fig. 15. Trends in Age Distribution of COVID-19 Cases in Fulton County by 14-day periods



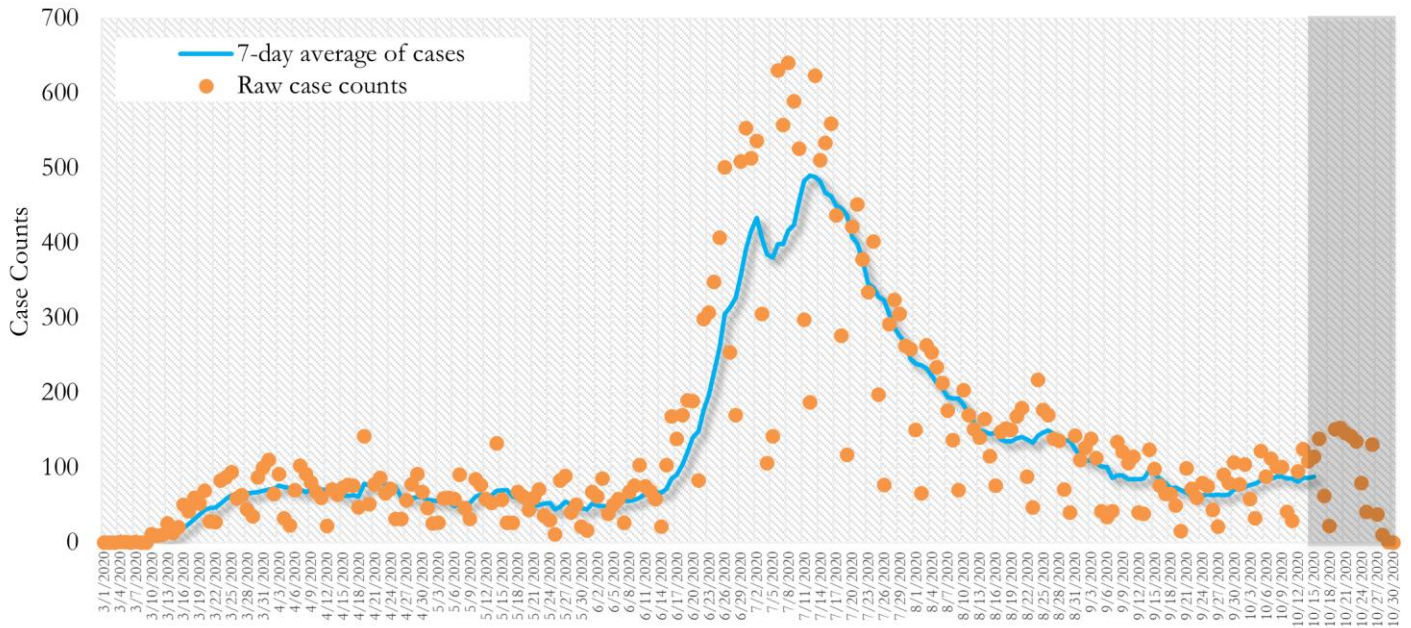
Earlier (March-May 2020) large proportions of reported cases were among persons aged 60 and older. In the most recent two weeks, 20-29 year olds accounted for the highest number of new cases among all age groups, followed by 30-39 year olds.

Fig. 16. Age Distribution of COVID-19 Cases in Fulton County by 14-day periods



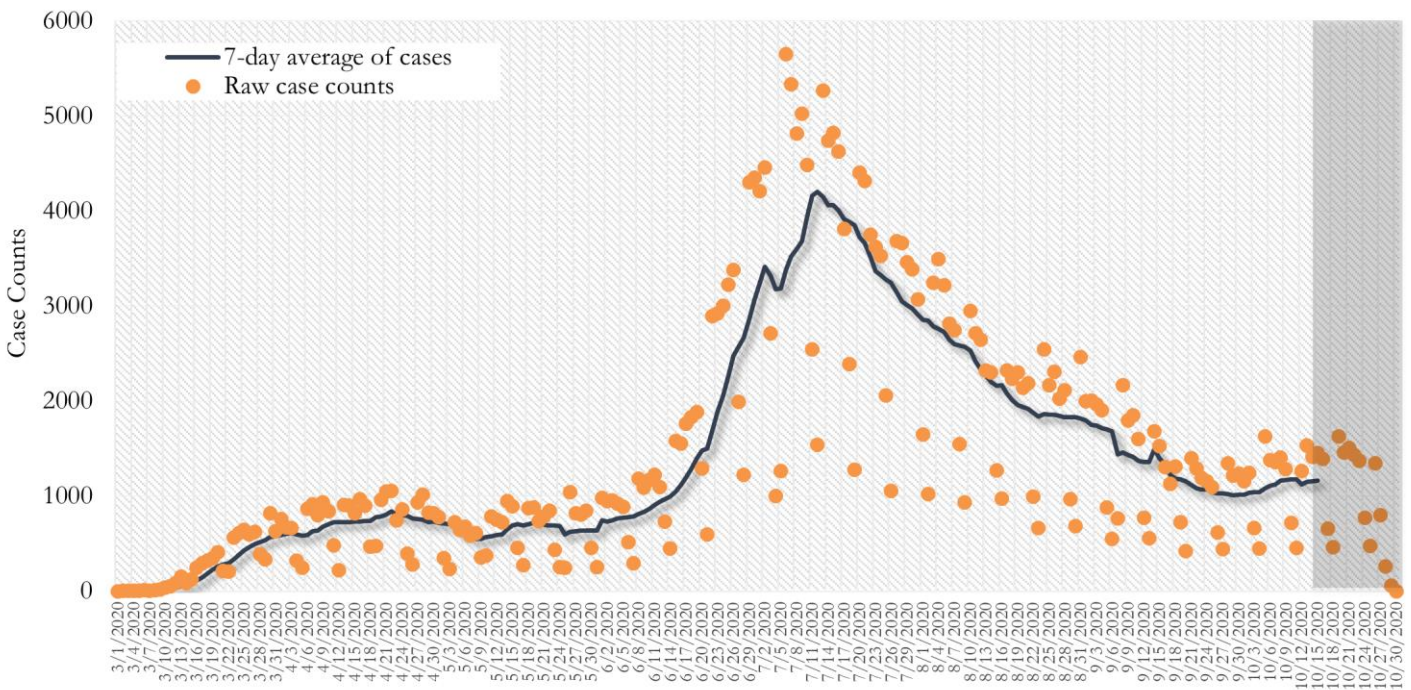
TRENDS IN COVID-19 CASES, HOSPITALIZATIONS AND DEATHS (7-DAY MOVING AVE.)

Fig. 17. New COVID-19 Cases in Fulton County Daily (Averaged over 7 days)



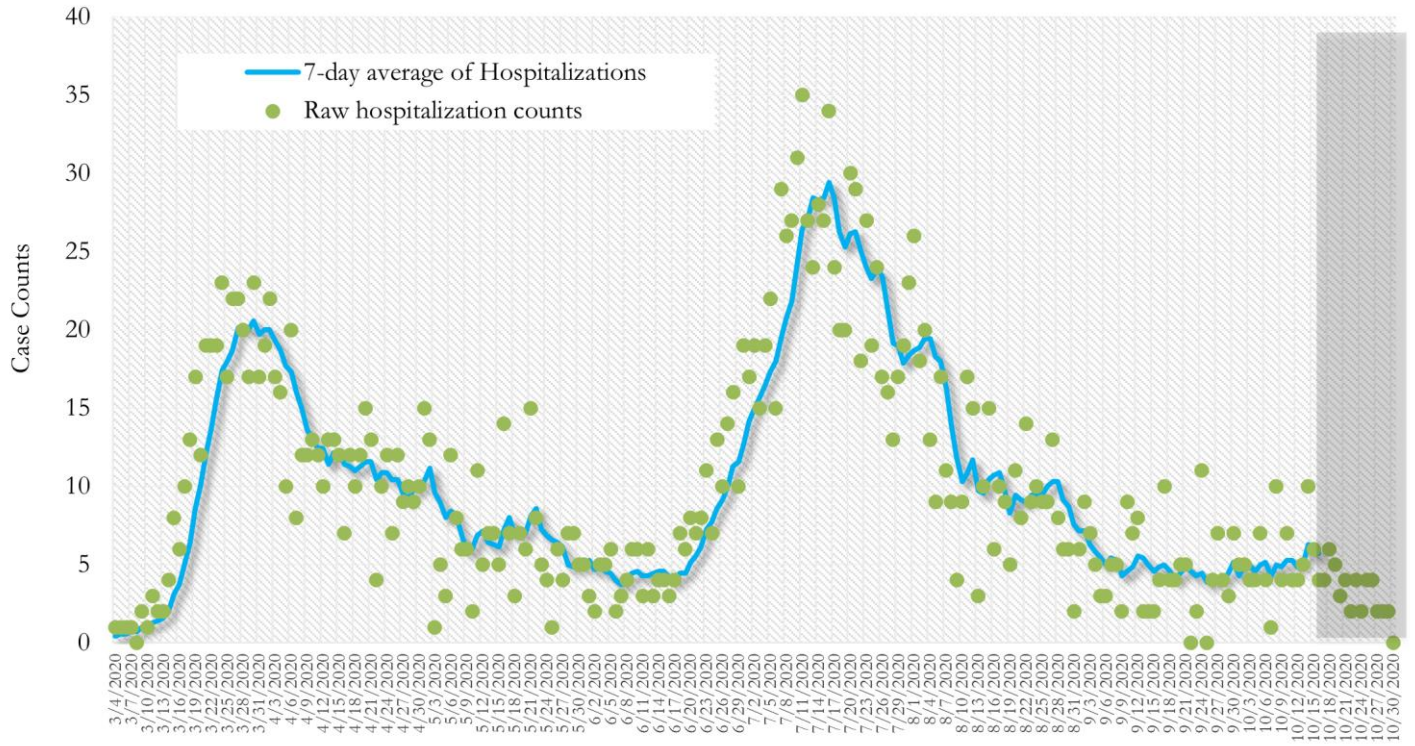
*Date of collection of first positive sample used (report creation date used where sample collection date is missing). Graph above reflects the trend in COVID-19 diagnosis. Due to the high volume of testing in recent weeks, there have been delays in reporting lab results. Thus, the trend is subject to change as more lab results get added to the state surveillance database.

Fig. 18. New COVID-19 Cases in Georgia State Daily (Averaged over 7 days)



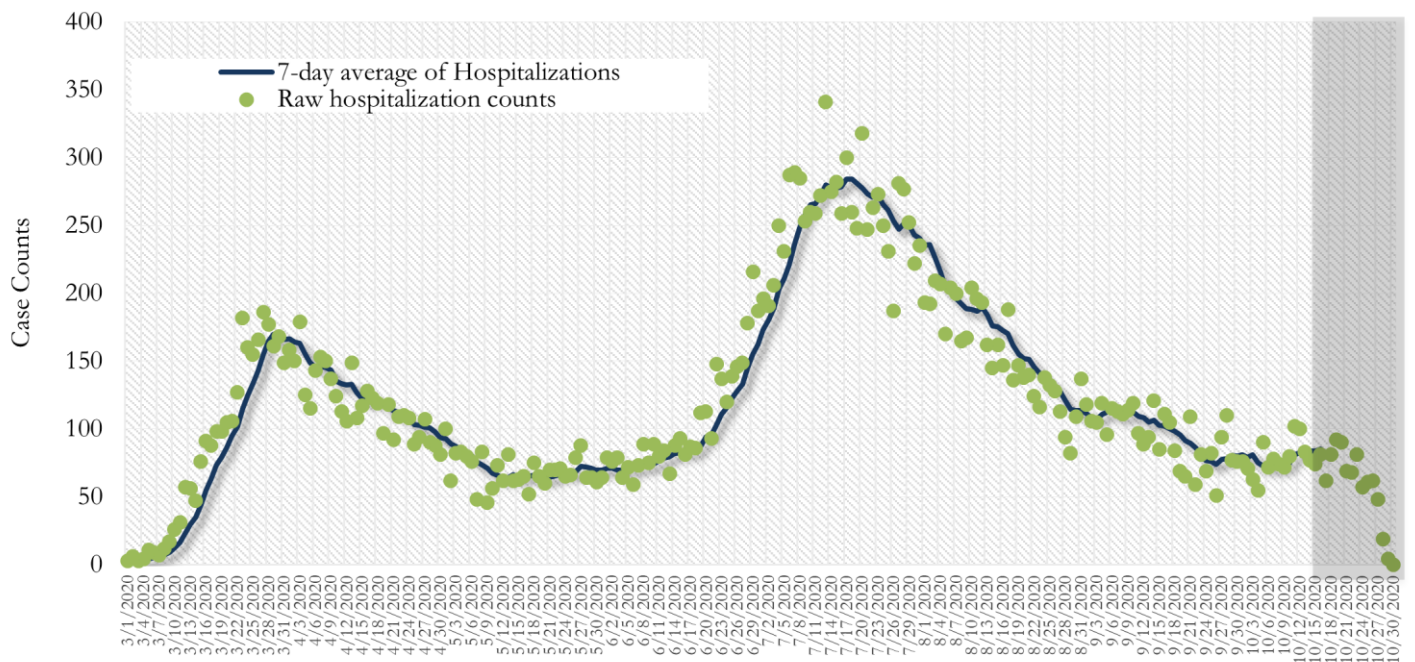
*Date of collection of first positive sample used (report creation date used where sample collection date is missing). Graph above reflects the trend in COVID-19 diagnosis. Due to the high volume of testing in recent weeks, there have been delays in reporting lab results. Thus, the trend is subject to change as more lab results get added to the state surveillance database.

Fig. 19. COVID-19 Hospitalizations in Fulton County Daily (Averaged over 7 days)



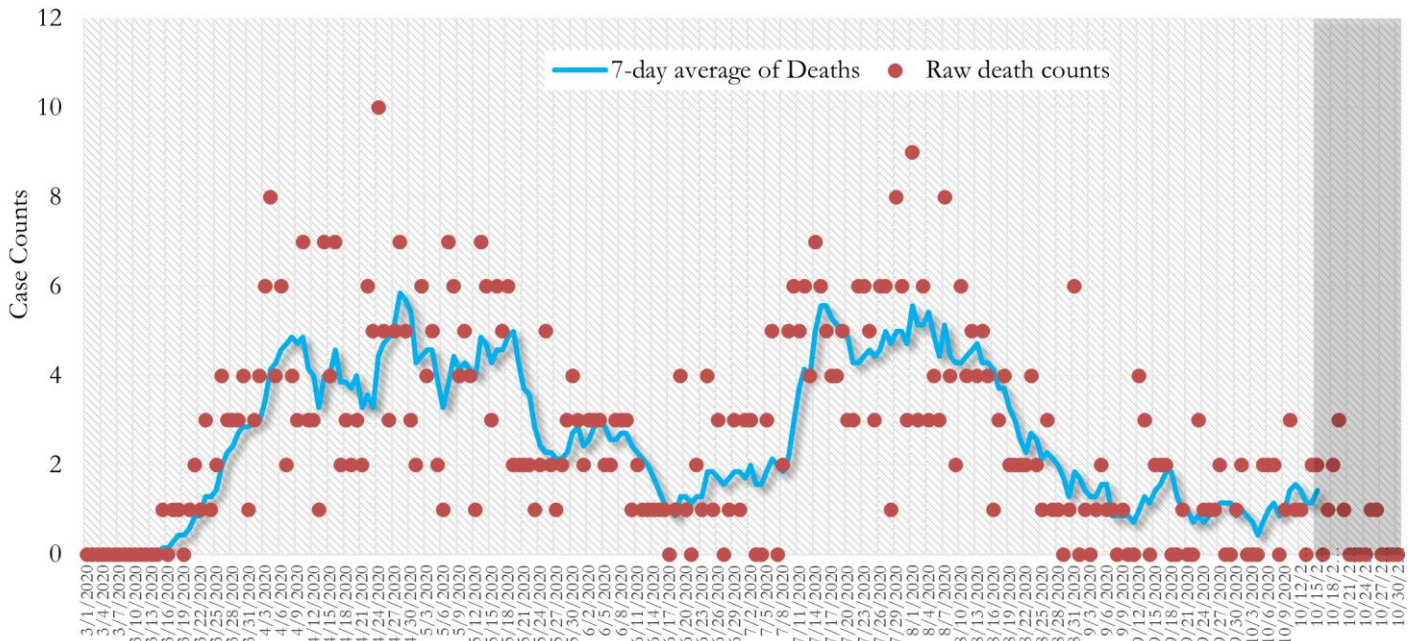
*Reported date of hospital admission used. Graph above reflects the trend in COVID-19 hospitalizations. Due to the high volume of new cases being added daily, there have been delays in reporting hospitalization data. Thus, the trend is likely to change as more hospitalization data is reported in the state surveillance database.

Fig. 20. COVID-19 Hospitalizations in Georgia State Daily (Averaged over 7 days)



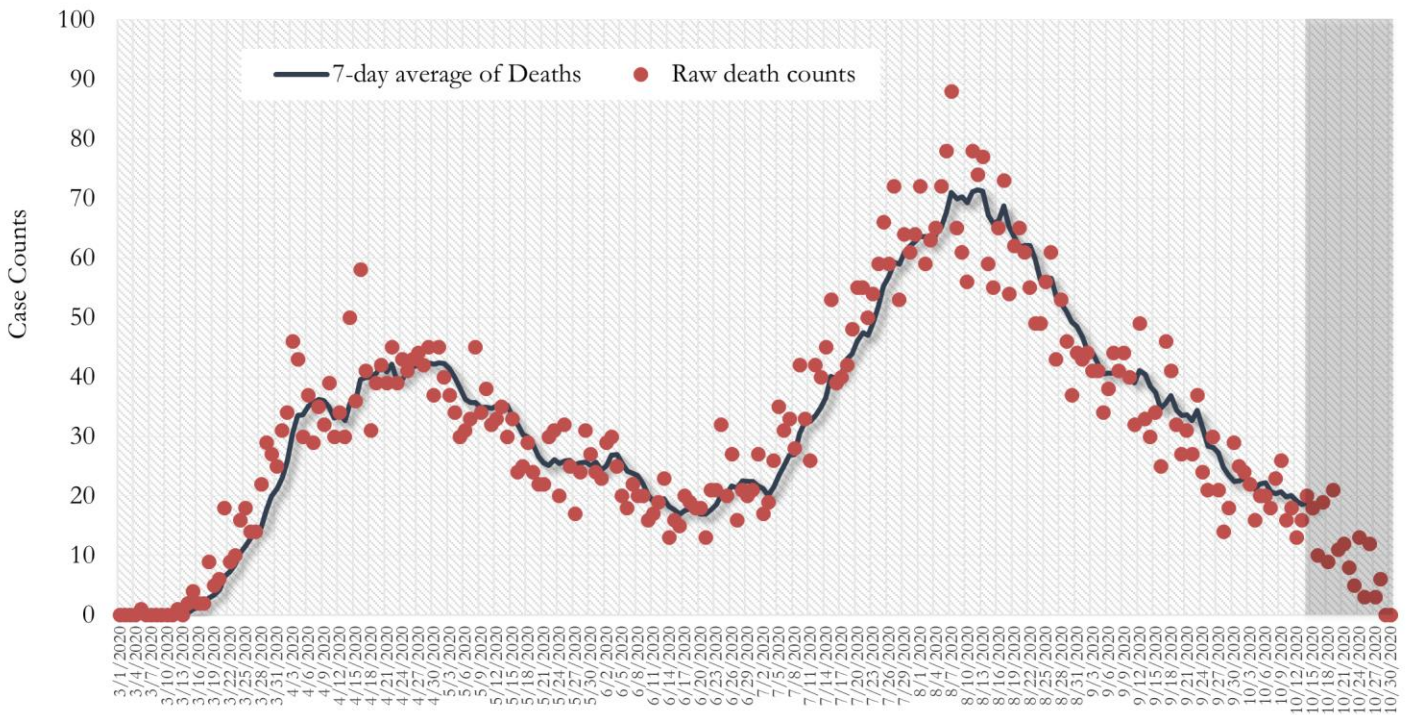
*Reported date of hospital admission used. Graph above reflects the trend in COVID-19 hospitalizations. Due to the high volume of new cases being added daily, there have been delays in reporting hospitalization data. Thus, the trend is likely to change as more hospitalization data is reported in the state surveillance database.

Fig. 21. COVID-19 Deaths in Fulton County Daily (Averaged over 7 days)



* Reported date of death used. Graph above reflects the trend in deaths attributed to COVID-19. The trend is likely to change as more data on deaths among persons with COVID-19 is reported in the state surveillance database.

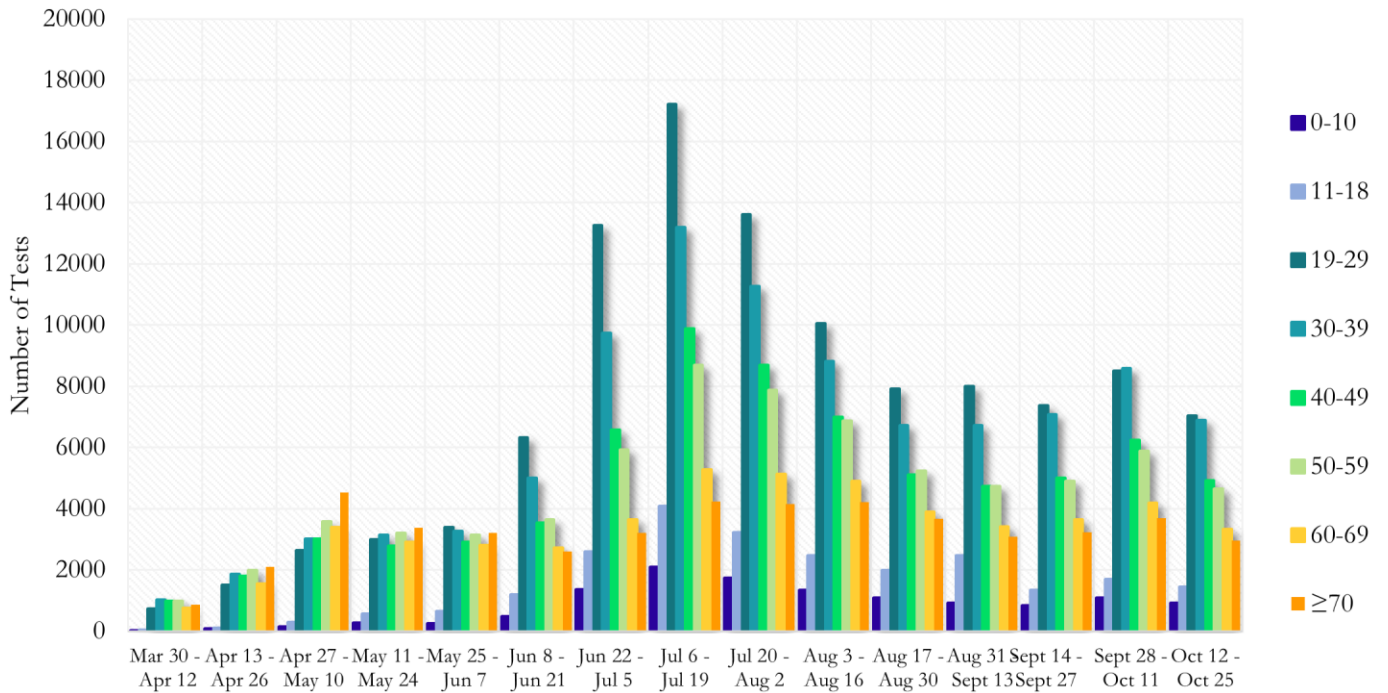
Fig. 22. COVID-19 Deaths in Georgia State Daily (Averaged over 7 days)



* Reported date of death used. Graph above reflects the trend in deaths attributed to COVID-19. The trend is likely to change as more data on deaths among persons with COVID-19 is reported in the state surveillance database.

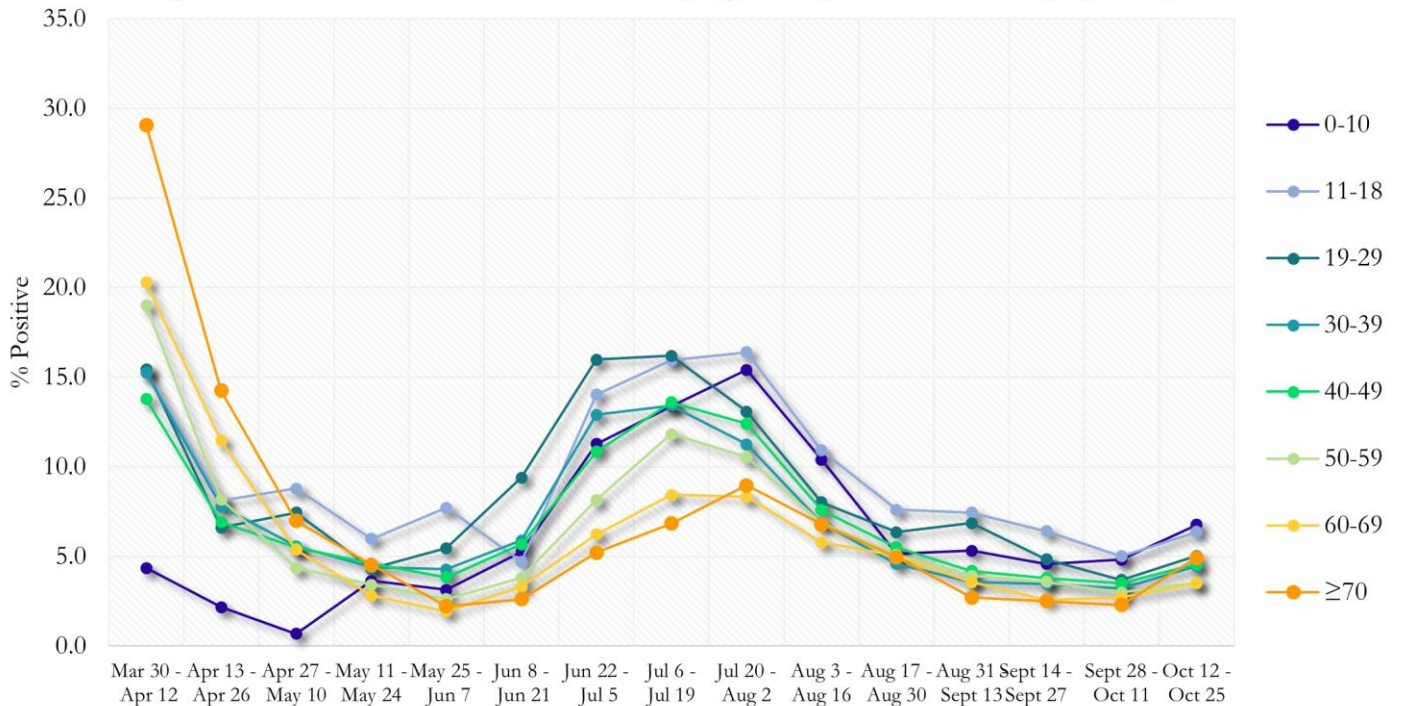
COVID-19 TESTING AND POSITIVITY IN FULTON COUNTY BY AGE AND RACE

Fig. 23. COVID-19 Tests by Age in Fulton County by 14-day Periods



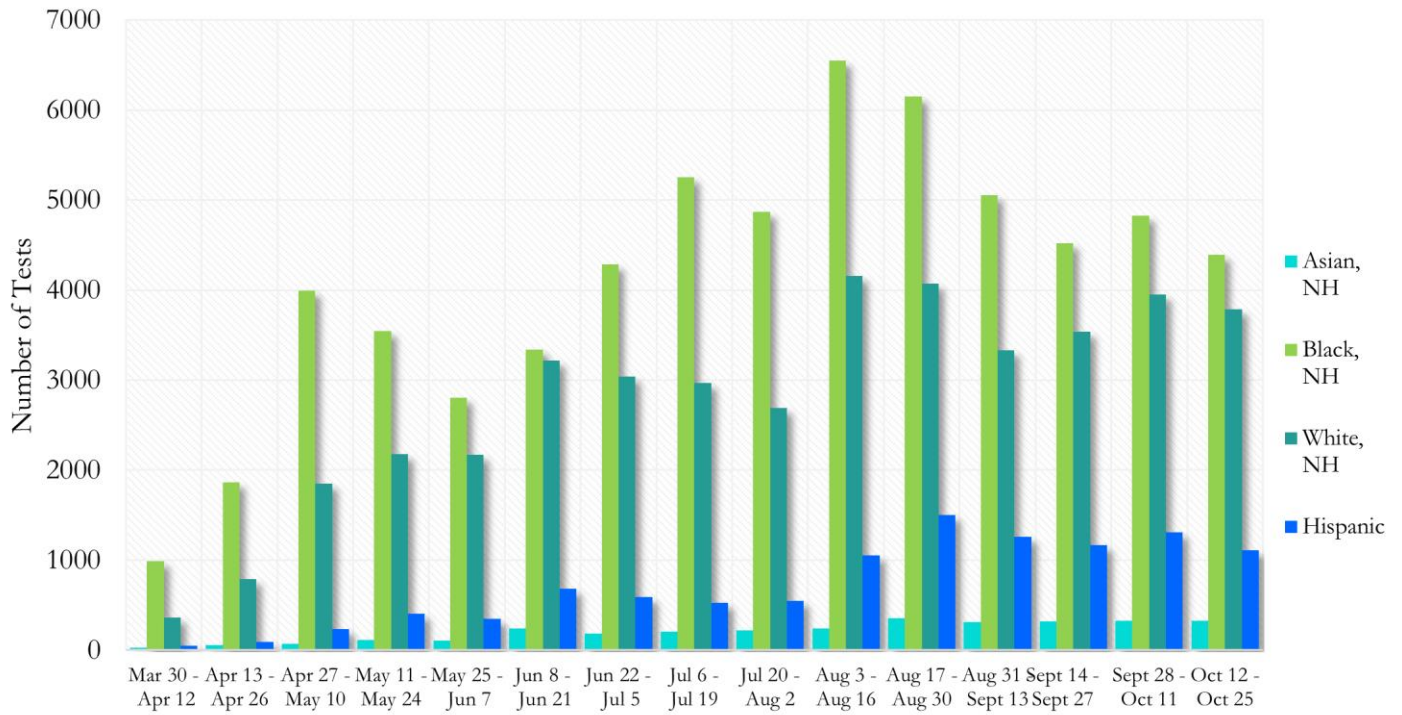
*Data on Polymerase Chain Reaction (PCR) tests only included.

Fig. 24. Percent Positive COVID-19 Tests by Age Group in Fulton County by 14-day Periods



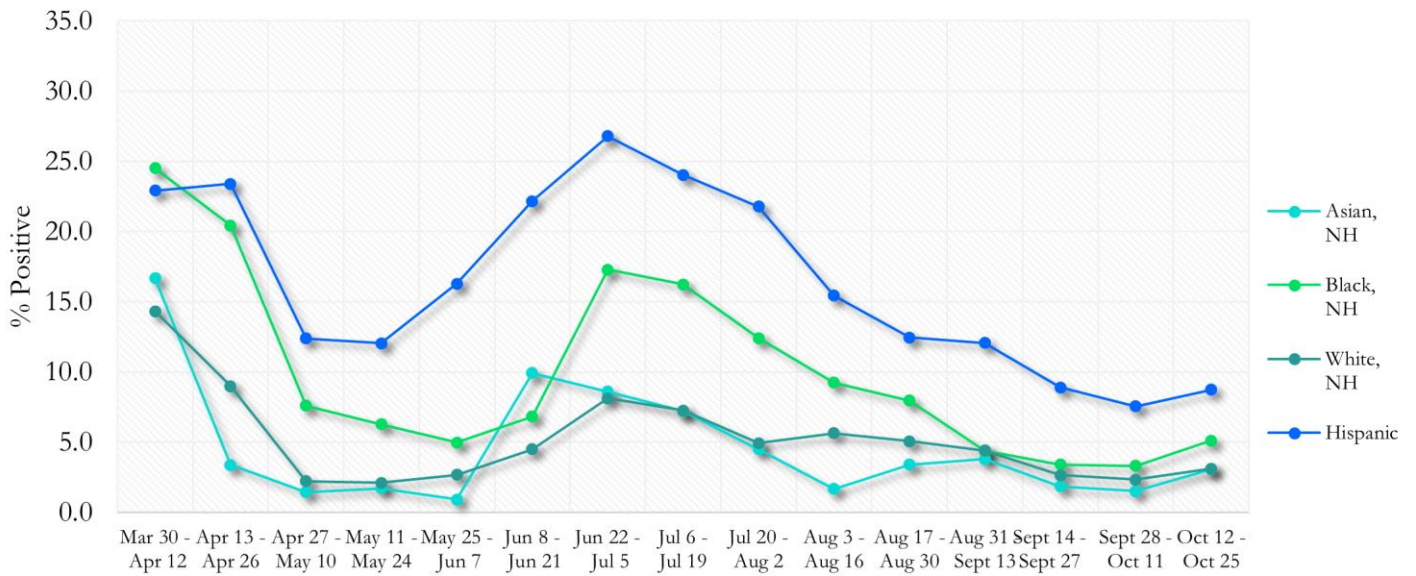
*Data on Polymerase Chain Reaction (PCR) tests only included.

Fig. 25. COVID-19 Tests by Race and Ethnicity in Fulton County by 14-day Periods



*Data on Polymerase Chain Reaction (PCR) tests only included.

Fig. 26. Percent Positive COVID-19 Tests by Race and Ethnicity in Fulton County by 14-day Periods



*Data on Polymerase Chain Reaction (PCR) tests only included.

COVID-19 CASE COUNTS BY ZIP CODE

| | Prior (10/23/20) | Current Total (10/27/20) | | New Cases (Period: 9/26/20 – 10/23/20) ¹ | | |
|-------------------|------------------|--------------------------|-------|---|----------------------------------|-----------------------|
| | Count | Count | % | Recent 14 d. (Oct 10– Oct 23) | Prior 14 d. (Sept 26 – Oct 9) | % change ² |
| All Fulton | 31023 | 31416 | 100% | 1604 | 1153 | ↑ 39.1% |
| 30004 | 1033 | 1045 | 3.33% | 43 | 61 | ↓ 29.5% |
| 30005 | 583 | 588 | 1.87% | 29 | 25 | ↑ 16.0% |
| 30009 | 514 | 520 | 1.66% | 17 | 17 | ↓ 29.2% |
| 30022 | 1368 | 1377 | 1.04% | 82 | 66 | ↑ 24.2% |
| 30023 | <10 | <10 | <0.1% | 0 | 0 | - |
| 30024 | 15 | 15 | <0.1% | <10 | 0 | - |
| 30075 | 1208 | 1224 | 3.90% | 58 | 59 | ↓ 1.7% |
| 30076 | 1230 | 1245 | 3.96% | 79 | 55 | ↑ 43.6% |
| 30080 | <10 | <10 | <0.1% | 0 | 0 | - |
| 30097 | 305 | 307 | 0.98% | 20 | 16 | ↑ 25.0% |
| 30098 | - | - | - | 0 | 0 | - |
| 30135 | <10 | <10 | <0.1% | 0 | 0 | - |
| 30138 | <10 | <10 | <0.1% | 0 | 0 | - |
| 30139 | - | - | - | 0 | 0 | - |
| 30213 | 1197 | 1211 | 3.85% | 54 | 50 | ↑ 8.0% |
| 30268 | 206 | 208 | 0.66% | <10 | 13 | ↓ 61.5% |
| 30291 | 856 | 860 | 2.74% | 50 | 31 | ↑ 61.3% |
| 30296 | 65 | 67 | 0.21% | 12 | 0 | ↑ 100.0% |
| 30301 | 11 | 11 | <0.1% | <10 | 0 | - |
| 30303 | 409 | 409 | 1.30% | 34 | <10 | ↑ 277.8% |
| 30305 | 890 | 912 | 2.90% | 59 | 41 | ↑ 43.9% |
| 30306 | 377 | 387 | 1.23% | 18 | 13 | ↑ 38.5% |
| 30307 | 212 | 218 | 0.69% | 11 | <10 | ↑ 57.1% |
| 30308 | 647 | 659 | 2.10% | 46 | 18 | ↑ 155.6% |
| 30309 | 945 | 963 | 3.07% | 75 | 33 | ↑ 127.3% |
| 30310 | 820 | 829 | 2.64% | 37 | 23 | ↑ 60.9% |
| 30311 | 855 | 869 | 2.77% | 38 | 23 | ↑ 65.2% |
| 30312 | 879 | 892 | 2.84% | 39 | 35 | ↑ 11.4% |
| 30313 | 325 | 326 | 1.04% | <10 | <10 | - |
| 30314 | 612 | 616 | 1.96% | 22 | 12 | ↑ 83.3% |
| 30315 | 953 | 967 | 3.08% | 48 | 24 | ↑ 100.0% |
| 30316 | 415 | 419 | 1.33% | 17 | 10 | ↑ 70.0% |
| 30318 | 1914 | 1944 | 6.19% | 83 | 59 | ↑ 40.7% |
| 30319 | 165 | 167 | 0.53% | 12 | 10 | ↑ 20.0% |
| 30321 | 12 | 11 | <0.1% | <10 | 0 | - |
| 30324 | 1009 | 1021 | 3.25% | 45 | 33 | ↑ 36.4% |
| 30326 | 277 | 281 | 0.89% | 19 | 10 | ↑ 90.0% |
| 30327 | 649 | 664 | 2.11% | 50 | 30 | ↑ 66.7% |
| 30328 | 944 | 959 | 3.05% | 68 | 48 | ↑ 41.7% |
| 30331 | 1898 | 1910 | 6.08% | 67 | 75 | ↓ 10.7% |
| 30334 | 13 | 13 | <0.1% | <10 | 0 | - |
| 30336 | 91 | 91 | 0.29% | <10 | <10 | - |
| 30337 | 375 | 384 | 1.22% | 20 | 10 | ↑ 100.0% |
| 30338 | 106 | 106 | 0.34% | <10 | <10 | - |
| 30339 | 265 | 269 | 0.86% | 10 | <10 | ↑ 400.0% |
| 30340 | 31 | 31 | <0.1% | 0 | <10 | ↓ 100.0% |
| 30341 | 31 | 31 | <0.1% | 0 | 0 | - |
| 30342 | 1316 | 1330 | 4.23% | 58 | 51 | ↑ 13.7% |
| 30344 | 991 | 1006 | 3.20% | 39 | 29 | ↑ 34.5% |
| 30345 | 26 | 25 | <0.1% | 0 | 0 | - |

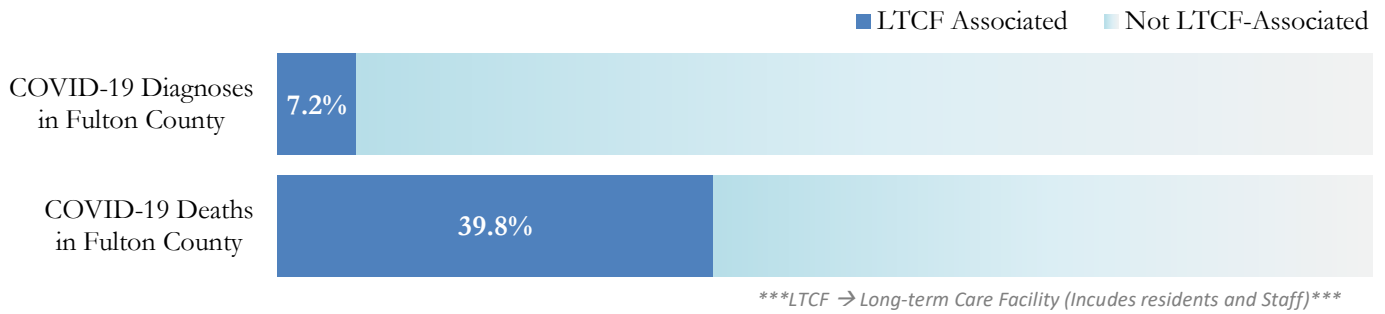
| | | | | | | |
|---------|------|------|-------|-----|-----|---------|
| 30349 | 1987 | 2010 | 6.40% | 115 | 61 | ↑ 88.5% |
| 30350 | 709 | 719 | 2.29% | 35 | 39 | ↓ 10.3% |
| 30354 | 473 | 485 | 1.54% | 29 | 17 | ↑ 70.6% |
| 30358 | <10 | <10 | <0.1% | 0 | 0 | - |
| 30363 | 78 | 78 | 0.25% | <10 | <10 | - |
| 30374 | 31 | 31 | <0.1% | 0 | 0 | - |
| 30606 | <10 | <10 | <0.1% | 0 | 0 | - |
| 31131 | <10 | <10 | <0.1% | 0 | 0 | - |
| 31150 | <10 | <10 | <0.1% | 0 | 0 | - |
| Unknown | 1072 | 683 | 2.17% | 17 | 17 | - |

¹**New cases:** Cases diagnosed in most recent 28 days (based on reported dates of positive sample collection). To allow for lag in reporting results of new diagnoses from samples collected in the most recent week, data used for incident diagnoses analyses were moved back by one week. ²**Percent change:** These reflect the percentage increase or decrease of new diagnoses between the 14 days preceding the past 7 days and the 14 days preceding that. Changes in ZIP codes with less than 10 cases in both 2 week intervals are not reported**Data cleaning (either during case interviews or address geo-coding) may lead to reassignment of few cases from one territory to another based on their corrected addresses. These may appear as “decreases” when compared to the previous day’s count. These do not reflect errors in the data collection or analysis process but only reflect the minor day-to-day fluctuations in case counts that arise in an evolving public health database like COVID’s. **Note:** Sharp increases in territorial COVID case counts often reflect new cases diagnosed at long term care facilities located in those territories during facility-wide /mass screening events **All data reported are preliminary and subject to change.**

COVID-19 IN LONG-TERM CARE FACILITIES IN FULTON COUNTY

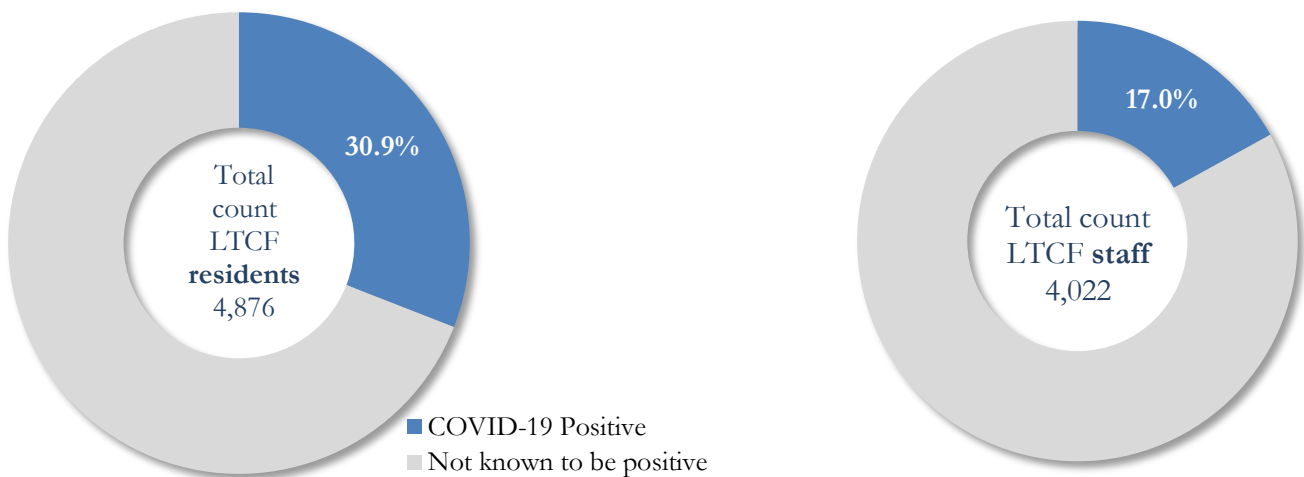
Older persons (aged 65 years and older) and persons who live in nursing homes or other long-term care facilities seem to be at higher risk for developing more serious complications from COVID-19. Extra precautions are recommended for individuals within this risk groups – Centers for Disease Control and Prevention (CDC 2020) <https://www.cdc.gov/coronavirus/2019-ncov/need-extra-precautions/people-at-higher-risk.html>

Fig. 27. COVID-19 Diagnoses and Deaths in Fulton County Associated with Long-Term Care Facilities



COVID-19 POSITIVITY:

Fig. 28. COVID-19 Positivity at 64 reporting Long-Term Care Facilities (LTCF) in Fulton County



COVID-19 Cases, Hospitalizations, and Deaths among 64 reporting Long-Term Care Facilities in Fulton County

| | LTCF Residents (n=4,876) | | | LTCF Staff (n=4,022) | | |
|---------------------------------------|---------------------------|--------------------------|--------------------------|--------------------------|------------------------|------------------------|
| | Cases | Hospitalizations | Deaths | Cases | Hospitalizations | Deaths |
| Average (count per fac.) ¹ | 23 | 5 | 4 | 11 | 1 | <0.1 |
| Median (count per fac.) ¹ | 10 | 2 | 1 | 8 | 0 | 0 |
| Lowest counts | 0 | 0 | 0 | 0 | 0 | 0 |
| Highest counts | 138 | 48 | 30 | 66 | 8 | 2 |
| Total Count | 1508 (30.9%) ^a | 310 (20.6%) ^b | 239 (15.8%) ^b | 683 (17.0%) ^a | 32 (4.7%) ^b | 5 (<1.0%) ^b |

^a Percentage shown reflects proportion of total residents/staff tested who were positive (i.e. COVID-19 Positivity). | ^b Percentages shown are proportions of persons residents/staff diagnosed with COVID-19 who were hospitalized or died after diagnoses.