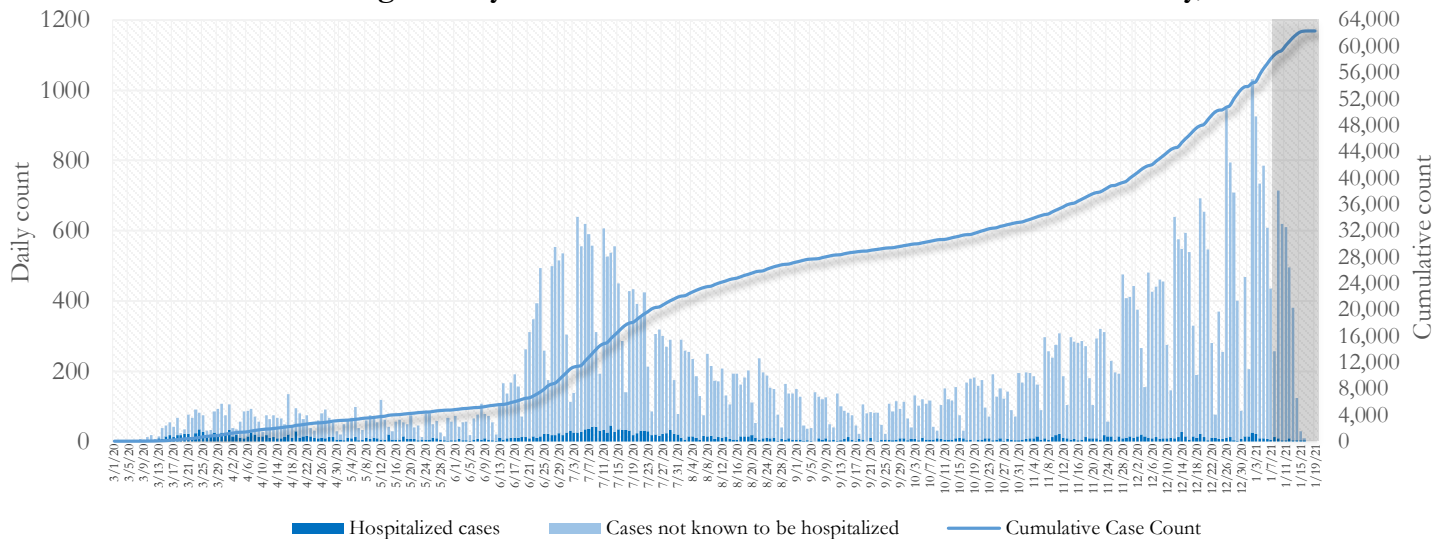


SUMMARY

- As of January 19, 2021, Fulton County has recorded **62,363 cases of the 2019 novel coronavirus (COVID-19)** and **824 confirmed COVID-19 deaths**. 122 deaths are currently being reviewed by GA DPH to confirm cause of death.
- Of **8,773 new diagnoses** made between December 30 and January 12, the central portion of the county (Atlanta metro) accounted for 39% while the northern and southern parts accounted for 40% and 18% respectively.
- By city, new COVID-19 case rates range from 461.2 per 100,000 persons (College Park) to 1326.6 per 100,000 persons (Palmetto). [**Fulton County Diagnoses Rates (per 100,000 persons): Cumulative – 5673.6; Incidence –798.1**]. See map showing incident case rate by ZIP code on Pg.12.
- Among all persons diagnosed with COVID-19 in Fulton County since July 1, **4.4% required hospitalization and 0.9% died**.
- Of all testing done in Fulton County between January 4 and January 17, the **percent positivity rate was 13.8%**.

Fig 1. Daily and Cumulative COVID-19 cases in Fulton County, GA



*Counts shown reflect the number of confirmed cases as of 9:00 pm on 1/18/21 using the date of first positive sample collection. Where date of sample collection was not available or missing, the date of report creation in GA SENDSS was used instead. **Note:** Delays in data reporting may cause changes in data counts, particularly in the shaded portion. Data throughout this report are preliminary and subject to ongoing data cleaning processes, and thus are subject to change.

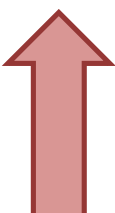
DISTRIBUTION OF COVID-19 CASES BY REGION

New cases: 39% of the new COVID-19 cases in the past 2 weeks occurred in Atlanta while 40% and 18% occurred in the Northern and Southern regions of the county respectively.

Fulton Region	% Cumulative count	% New cases*
Atlanta	42.3%	38.8%
North ¹	33.9%	39.6%
South ²	19.0%	18.2%
Unincorporated/Unknown	4.7%	3.4%

¹Includes all Fulton County cities north of Atlanta metro (Alpharetta, Milton, Johns Creek, Roswell, Sandy Springs, Mountain Park) |²Includes all cities south of Atlanta (Chattahoochee Hills, College Park, East Point, Hapeville, Palmetto, South Fulton, Fairburn, and Union City) ***New cases:** Cases diagnosed in the past 2 weeks only (between 12/30/20 – 1/12/21).

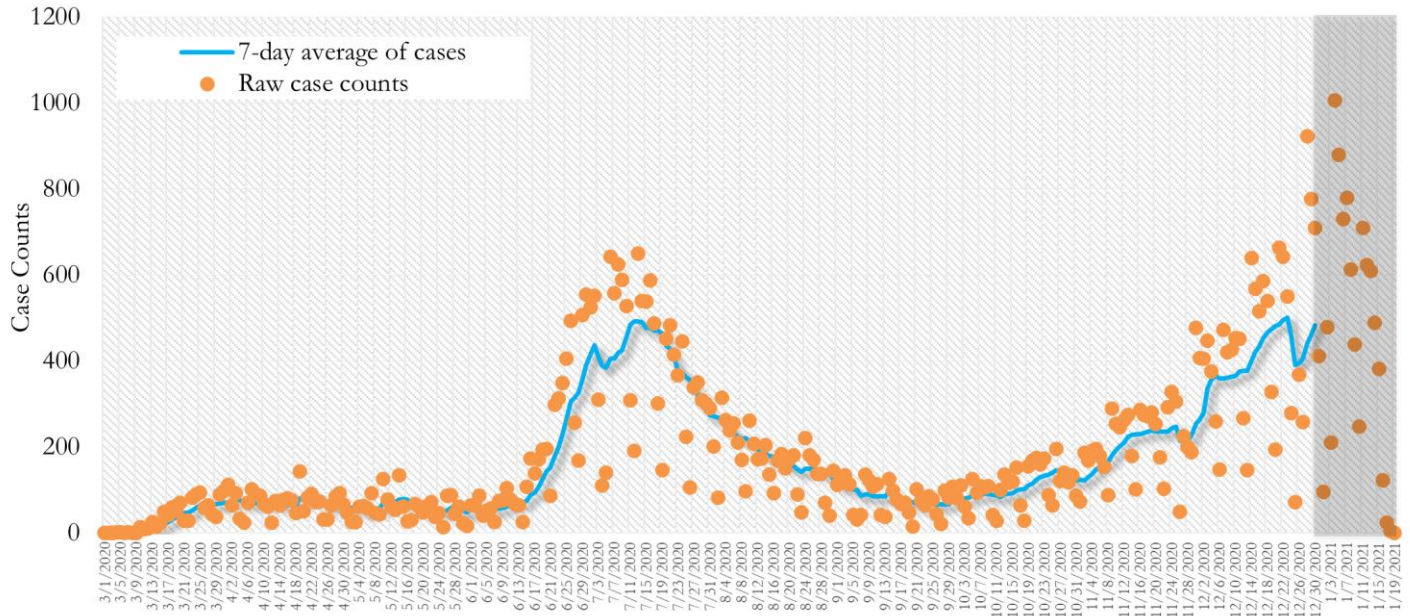
In the recent two week reporting period (12/30-1/12), there were more new cases of COVID-19 in Fulton County than the previous two weeks (12/16-12/29).



*Delayed a week to account for testing results turnaround time.

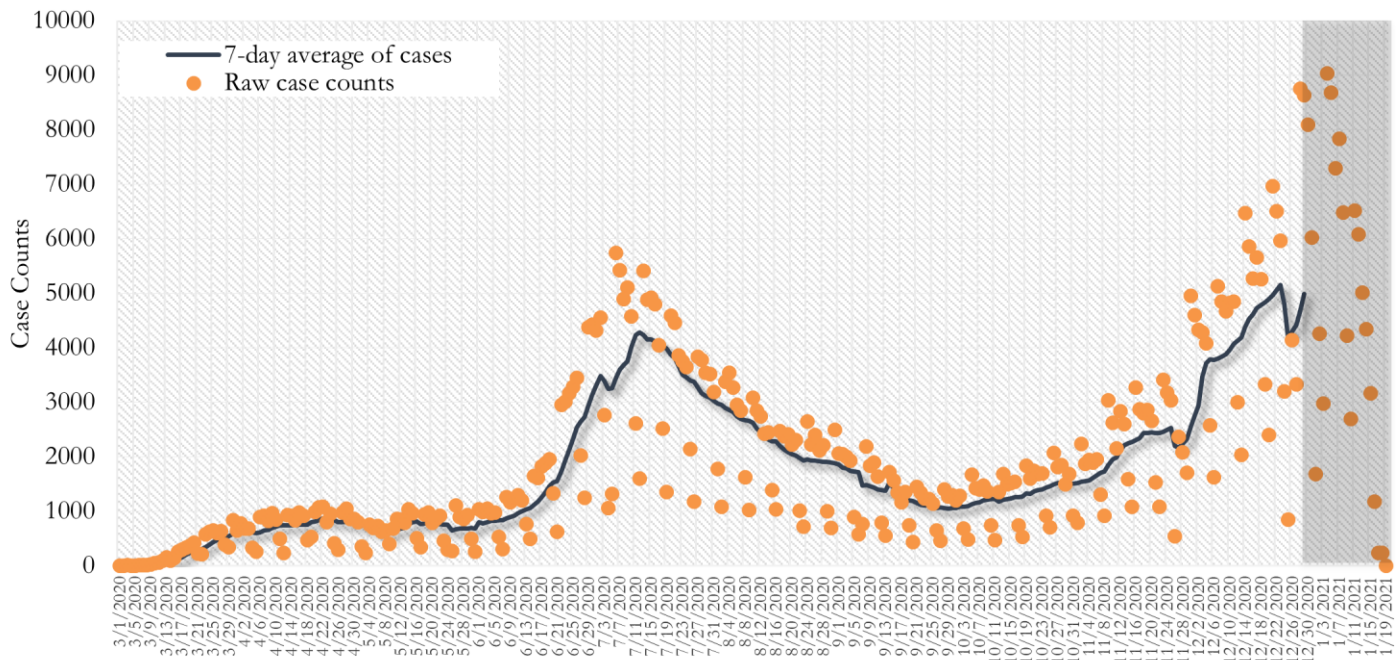
TRENDS IN COVID-19 CASES, HOSPITALIZATIONS AND DEATHS (7-DAY MOVING AVE.)

Fig. 2. New COVID-19 Cases in Fulton County Daily (Averaged over 7 days)



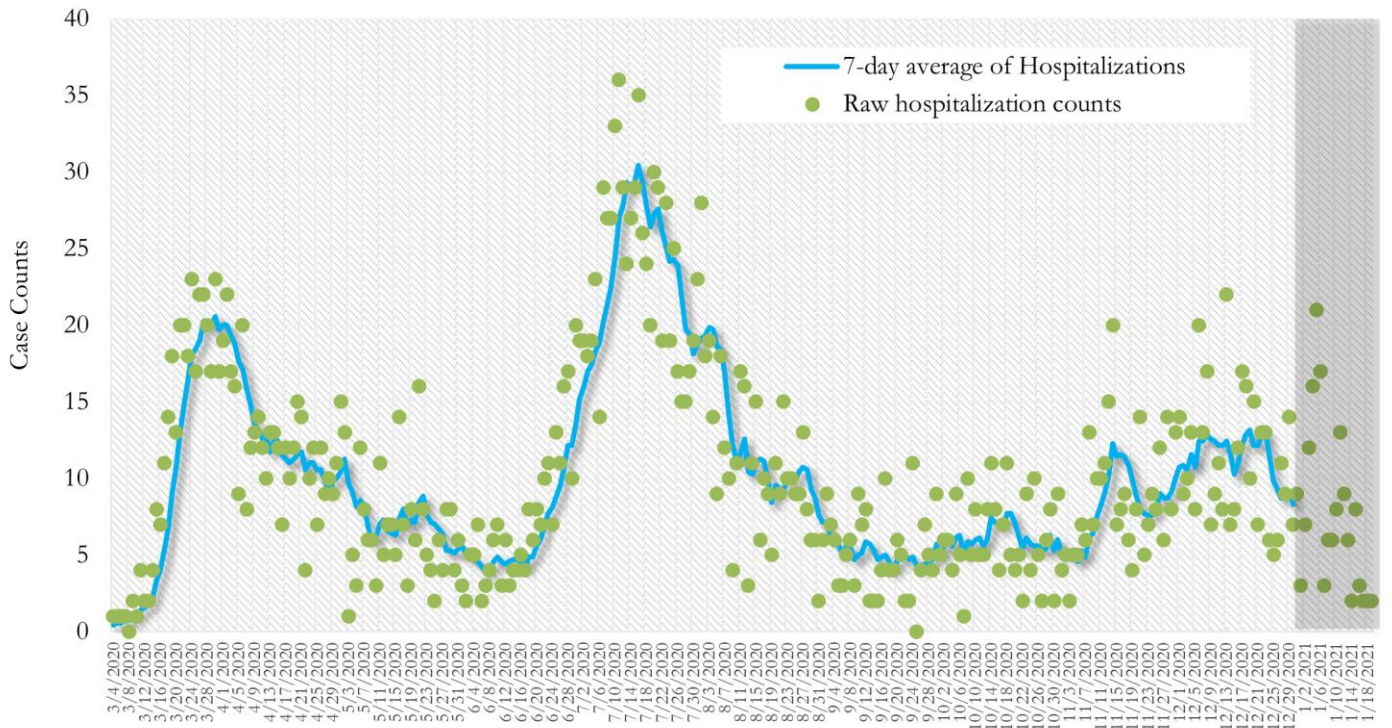
*Date of collection of first positive sample used (report creation date used where sample collection date is missing). Graph above reflects the trend in COVID-19 diagnosis. Due to the high volume of testing in recent weeks, there have been delays in reporting lab results. Thus, the trend is subject to change as more lab results get added to the state surveillance database.

Fig. 3. New COVID-19 Cases in Georgia State Daily (Averaged over 7 days)



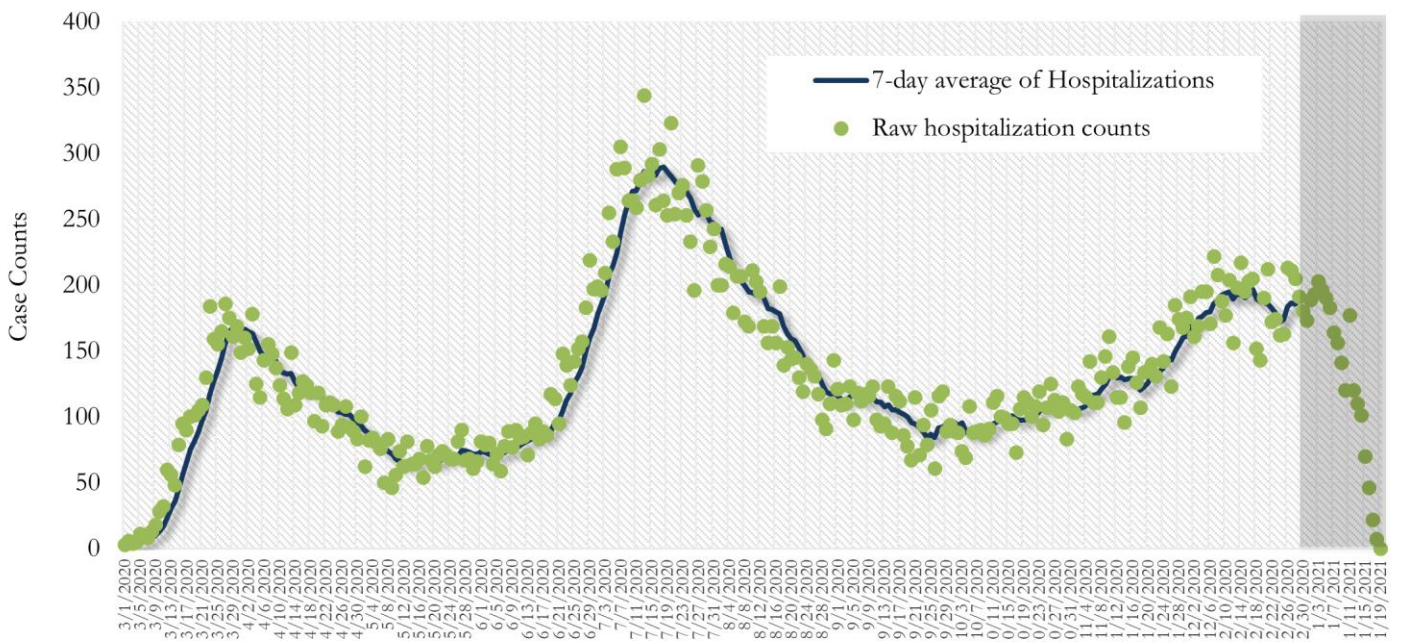
*Date of collection of first positive sample used (report creation date used where sample collection date is missing). Graph above reflects the trend in COVID-19 diagnosis. Due to the high volume of testing in recent weeks, there have been delays in reporting lab results. Thus, the trend is subject to change as more lab results get added to the state surveillance database.

Fig. 4. COVID-19 Hospitalizations in Fulton County Daily (Averaged over 7 days)



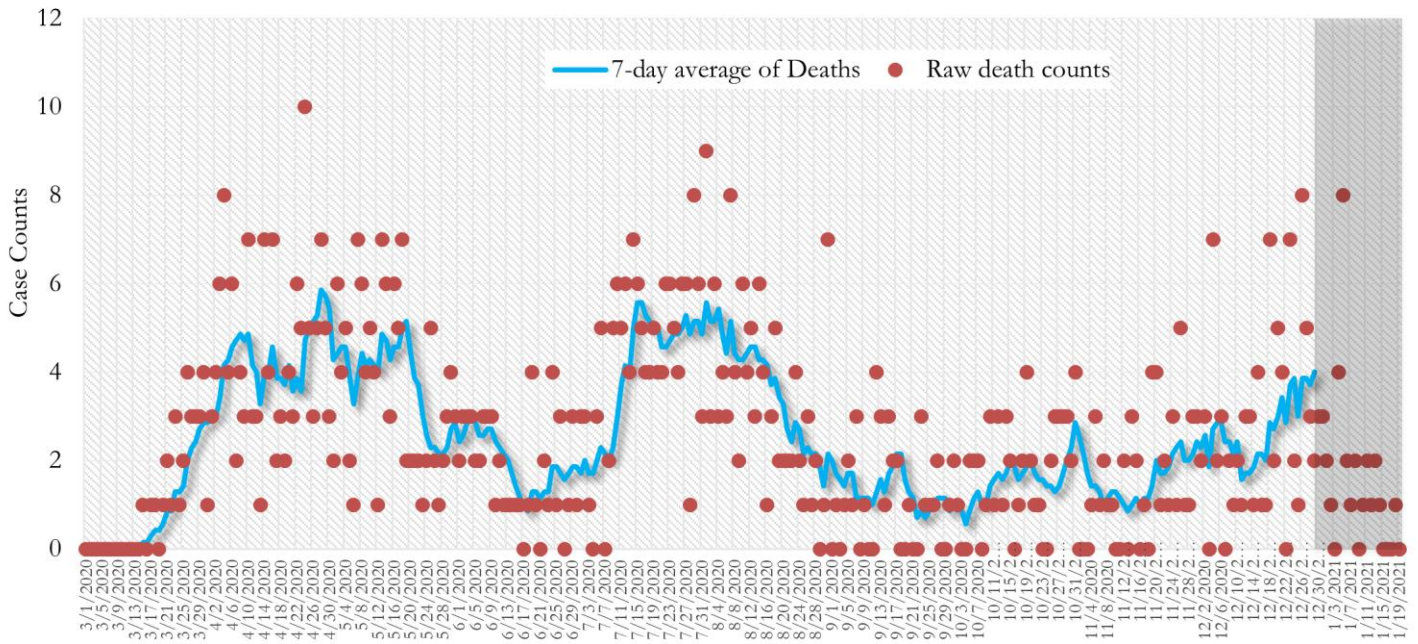
*Reported date of hospital admission used. Graph above reflects the trend in COVID-19 hospitalizations. Due to the high volume of new cases being added daily, there have been delays in reporting hospitalization data. Thus, the trend is likely to change as more hospitalization data is reported in the state surveillance database.

Fig. 5. COVID-19 Hospitalizations in Georgia State Daily (Averaged over 7 days)



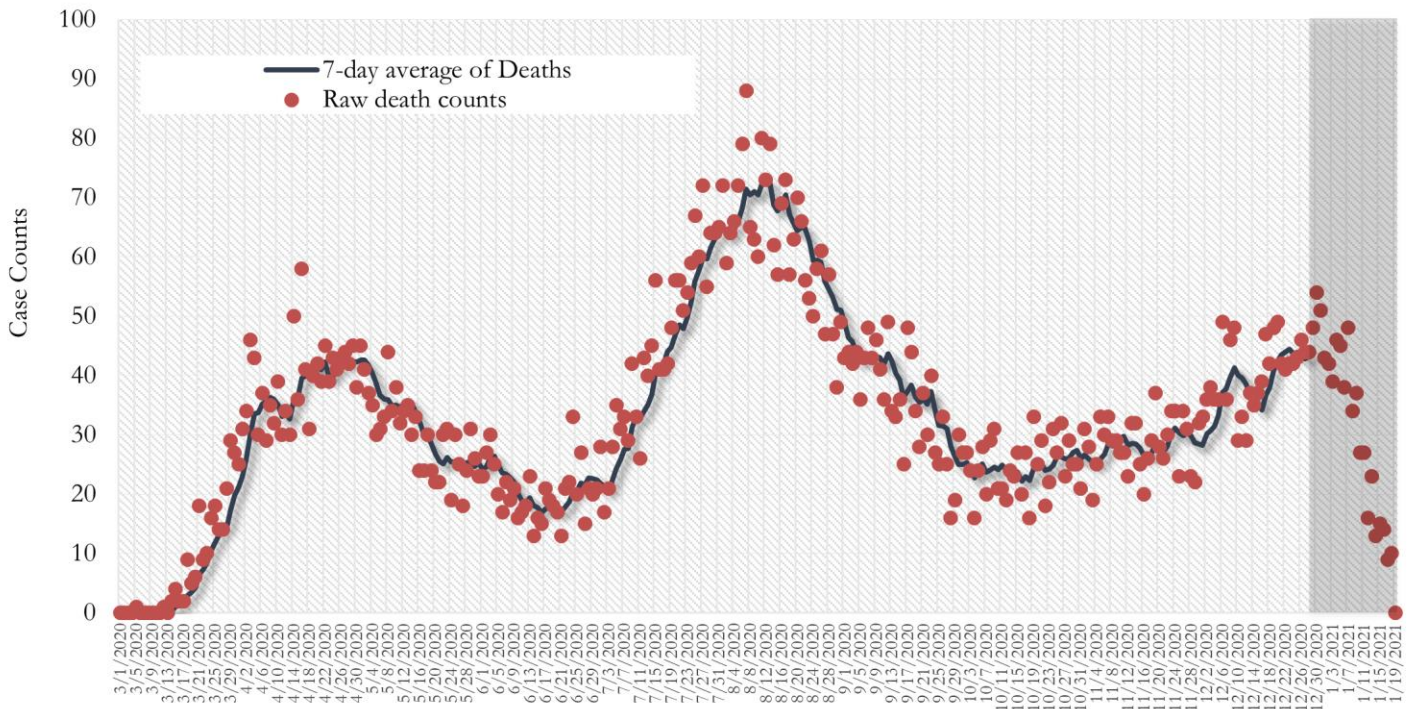
*Reported date of hospital admission used. Graph above reflects the trend in COVID-19 hospitalizations. Due to the high volume of new cases being added daily, there have been delays in reporting hospitalization data. Thus, the trend is likely to change as more hospitalization data is reported in the state surveillance database.

Fig. 6. COVID-19 Deaths in Fulton County Daily (Averaged over 7 days)



*Reported date of death used. Graph above reflects the trend in deaths attributed to COVID-19. The trend is likely to change as more data on deaths among persons with COVID-19 is reported in the state surveillance database.

Fig. 7. COVID-19 Deaths in Georgia State Daily (Averaged over 7 days)



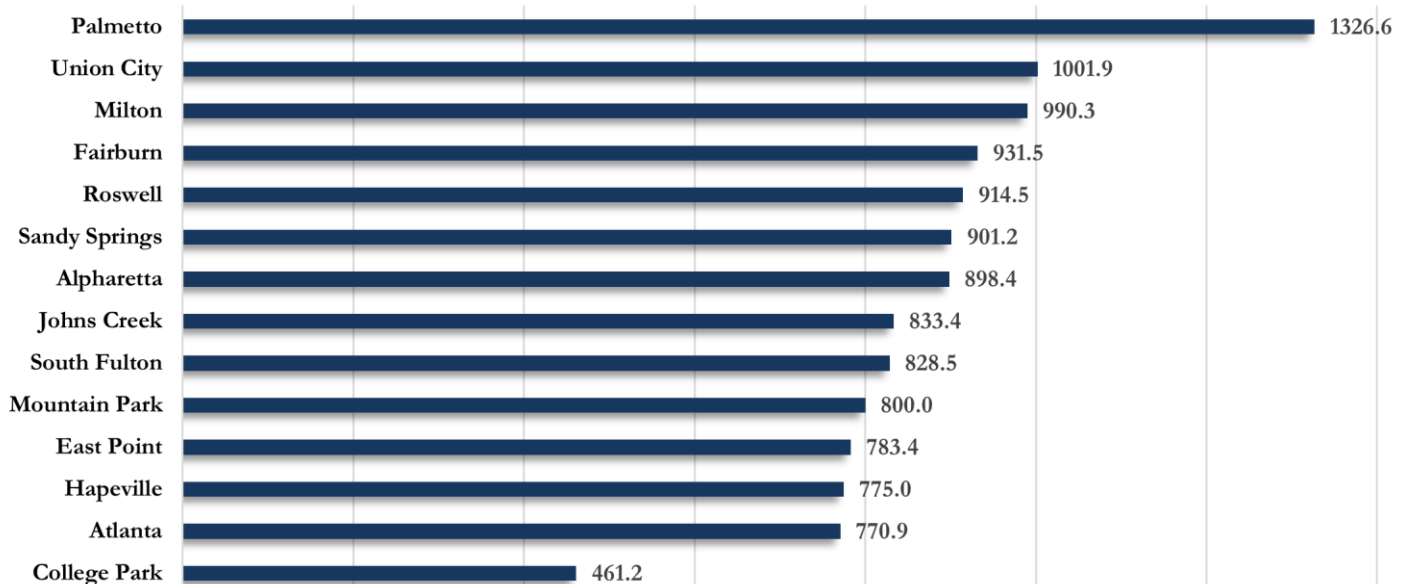
*Reported date of death used. Graph above reflects the trend in deaths attributed to COVID-19. The trend is likely to change as more data on deaths among persons with COVID-19 is reported in the state surveillance database.

COVID-19 CASE COUNTS AND RATES BY CITY

	Recent 14-day reporting period ¹	Preceding 14-day reporting period	% Change from preceding 14 days (%) ²	Incidence Rate ³
	12/30-1/12	12/16-12/29		
Alpharetta	581	447	↑ 30.0%	898.4
Atlanta	3401	2654	↑ 28.1%	770.9
Chattahoochee Hills	18	13	↑ 38.5%	627.8
College Park	64	53	↑ 20.8%	461.2
East Point	274	171	↑ 60.2%	783.4
Fairburn	137	69	↑ 98.6%	931.5
Hapeville	51	30	↑ 70.0%	775.0
Johns Creek	697	496	↑ 40.5%	833.4
Milton	378	269	↑ 40.5%	990.3
Mountain Park	<10	<10	↓ 28.6%	800.0
Palmetto	58	35	↑ 65.7%	1326.6
Roswell	862	641	↑ 34.5%	914.5
Sandy Springs	950	790	↑ 20.3%	901.2
South Fulton	788	576	↑ 36.8%	828.5
Union City	210	132	↑ 59.1%	1001.9
Unknown	294	183	-	-

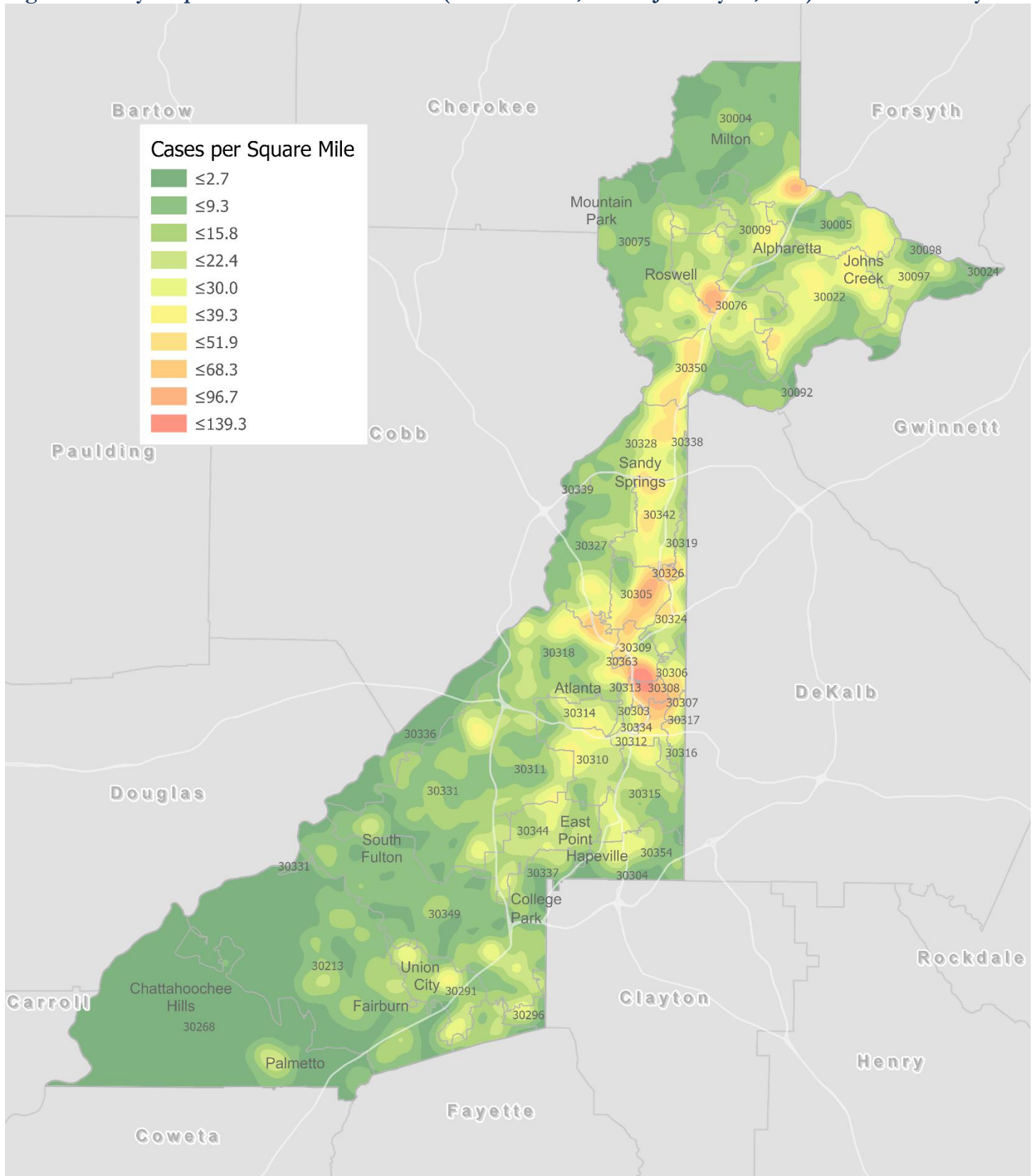
¹**New cases:** Cases diagnosed in most recent 28 days (based on reported dates of positive sample collection). To allow for lag in reporting results of new diagnoses from samples collected in the most recent week, data used for incident diagnoses analyses were moved back by one week. ²**% change:** These reflect the percentage increase or decrease in new diagnoses between the 14 days preceding the most recent 7 days and the 14 days preceding that. ³**(Incidence) Rate:** Rate of new diagnoses in the last 14 day period preceding the immediate past week. ****Data cleaning** (either during case interviews or address geo-coding) may lead to reassignment of few cases from one territory to another based on their corrected addresses. These may appear as “decreases” when compared to the previous day’s count. These do not reflect errors in the data collection or analysis process but only reflect the minor day-to-day fluctuations in case counts that arise in an evolving public health database like COVID’s. **Note:** All data reported are preliminary and subject to change.

Fig. 8. Incidence Rates by Fulton City for Recent 14-day Reporting Period



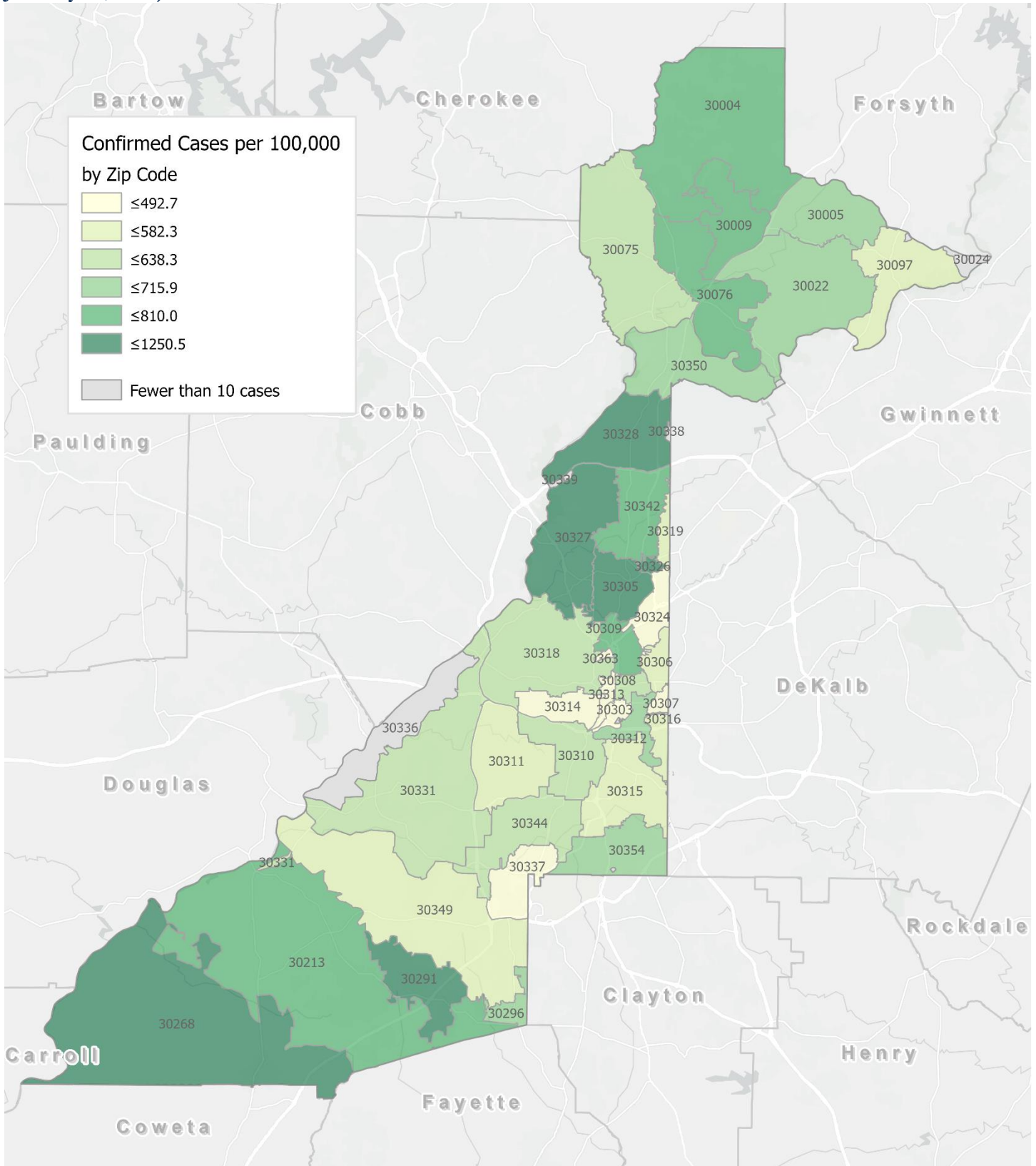
*Rates shown are per 100,000 persons | All data shown are preliminary and are subject to change as testing results get updated.

Fig. 9. Density Map – New COVID-19 Cases (December 30, 2020 – January 12, 2021) in Fulton County



New COVID-19 cases: Cases diagnosed in most recent 14 days (based on reported dates of positive sample collection). To allow for lag in reporting results of positive cases from samples collected in the immediate past 7 days, data used for incident diagnoses analyses are moved back by one week. Map reflects new COVID-19 cases diagnosed between Dec 30th, 2020 and Jan 12th, 2021 across Fulton County, excluding LTCF cases.

Fig. 10. New COVID-19 Diagnoses Rates (per 100,000 population) by Zip Code (December 30, 2020 – January 12, 2021)



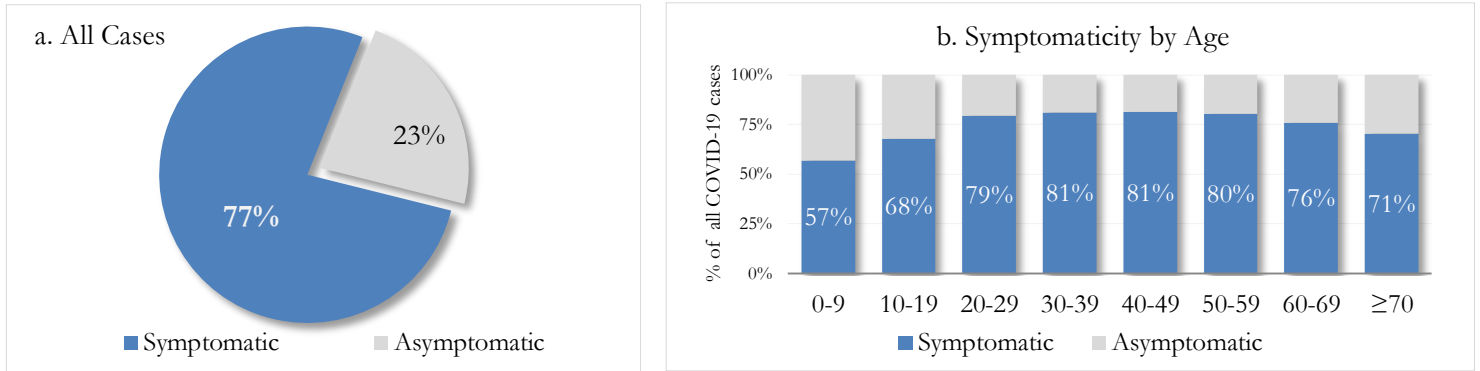
*Rates shown are per 100,000 populations.

New COVID-19 cases: Cases diagnosed in most recent 14 days (based on reported dates of positive sample collection). To allow for lag in reporting results of positive cases from samples collected in the immediate past 7 days, data used for incident diagnoses analyses are moved back by one week. Data used excludes outbreak-related cases at long-term care facilities and map shown reflects only the new non-LTCF cases diagnosed between the dates shown in map title. See page 12 for zip code break down table.

REPORTING SYMPTOMS AMONG PERSONS WITH COVID-19 IN FULTON

People with COVID-19 have reported a wide range of symptoms ranging from mild symptoms to severe illness. Symptoms may appear 2-14 days after exposure to the virus. Symptoms reported include: cough, shortness of breath/difficulty breathing, fever, chills, muscle pain, headache, sore throat, congestion, nausea or vomiting, diarrhea, or new loss of taste or smell – Centers for Disease Control and Prevention (CDC) – Centers for Disease Control and Prevention (CDC) <https://www.cdc.gov/coronavirus/2019-ncov/symptoms-testing/symptoms.html>

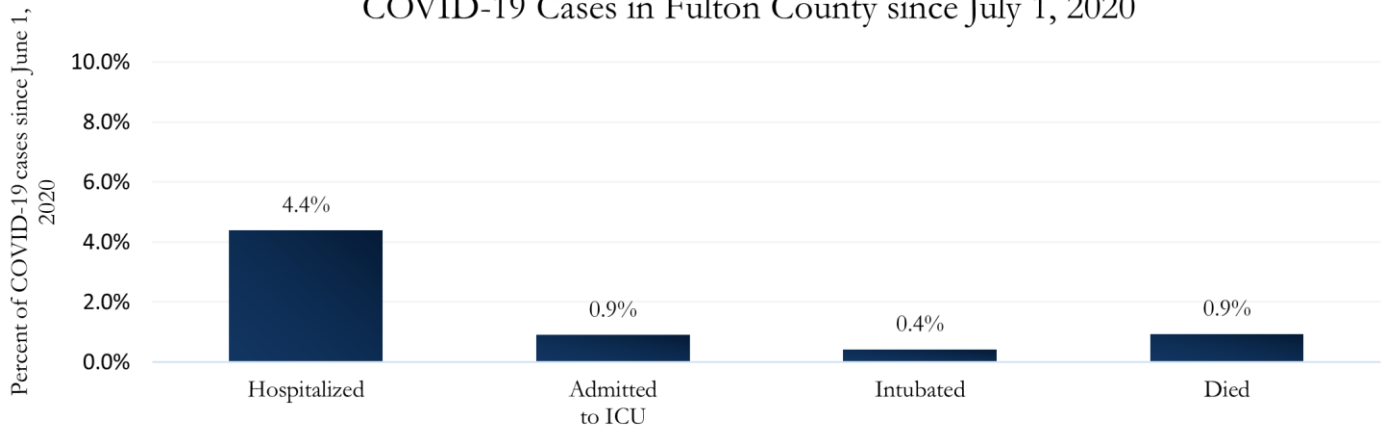
Fig. 11a & b. Total Proportion Reporting Symptoms in Fulton County



COVID-19 cases who have been case interviewed or had medical charts reviewed as of 1/18/21 only. n = 34,626

COVID-19 HOSPITALIZATIONS, ICU ADMISSIONS AND DEATHS IN FULTON

Fig. 12. Hospitalizations, ICU Admissions, Intubations, and Deaths among COVID-19 Cases in Fulton County since July 1, 2020



DEMOGRAPHIC DISTRIBUTIONS – COVID-19 CASES AND DEATHS

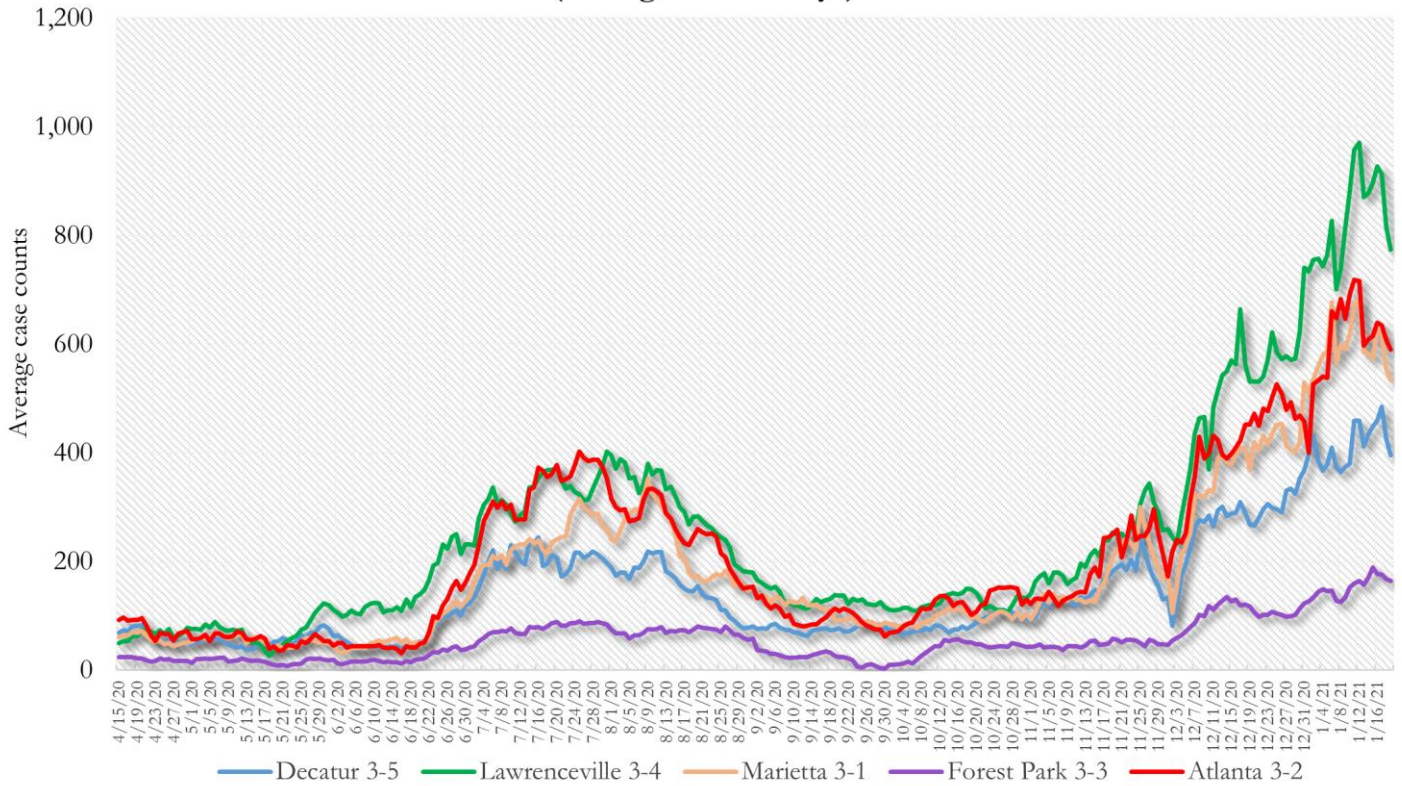
A. Distribution of COVID-19 cases by gender, age, and race in Fulton County by Fulton Region in the past 28 days (12/16-1/12)

	North Fulton Cities ¹ Count (%)	Atlanta Count (%)	South Fulton Cities ² Count (%)	Unknown City Count (%)	All Fulton Count (%)
Total COVID-19 cases	5907	5810	2582	470	14769
Gender: Female	3126 (53%)	3014 (52%)	1481 (57%)	250 (53%)	7871 (53%)
Male	2738 (46%)	2720 (47%)	1086 (42%)	211 (45%)	6755 (46%)
Unknown*	43 (1%)	76 (1%)	15 (1%)	<10	143 (1%)
Age: 0-9	285 (5%)	198 (3%)	116 (4%)	21 (4%)	620 (4%)
10-19	732 (12%)	400 (7%)	220 (9%)	39 (8%)	1391 (9%)
20-29	1067 (18%)	1482 (26%)	445 (17%)	92 (20%)	3086 (21%)
30-39	868 (15%)	1286 (22%)	519 (20%)	110 (23%)	2783 (19%)
40-49	908 (15%)	792 (14%)	449 (17%)	71 (15%)	2220 (15%)
50-59	980 (17%)	721 (12%)	409 (16%)	57 (12%)	2167 (15%)
60-69	540 (9%)	483 (8%)	222 (9%)	37 (8%)	1282 (9%)
≥70	525 (9%)	433 (7%)	195 (8%)	42 (9%)	1195 (8%)
Unknown*	<10	15 (0%)	<10	<10	25 (0%)
Race: Asian, NH	411 (7%)	99 (2%)	18 (1%)	25 (5%)	553 (4%)
Black, NH	455 (8%)	1960 (34%)	1644 (64%)	97 (21%)	4156 (28%)
White, NH	2316 (39%)	1345 (23%)	158 (6%)	120 (26%)	3939 (27%)
Hispanic	718 (12%)	271 (5%)	147 (6%)	42 (9%)	1178 (8%)
Other, NH	637 (11%)	534 (9%)	94 (4%)	50 (11%)	1315 (9%)
Unknown*	1370 (23%)	1601 (28%)	521 (20%)	136 (29%)	3628 (25%)

*Unknown includes cases not yet interviewed. 28 days delayed by seven to account for lag in reporting lab results.

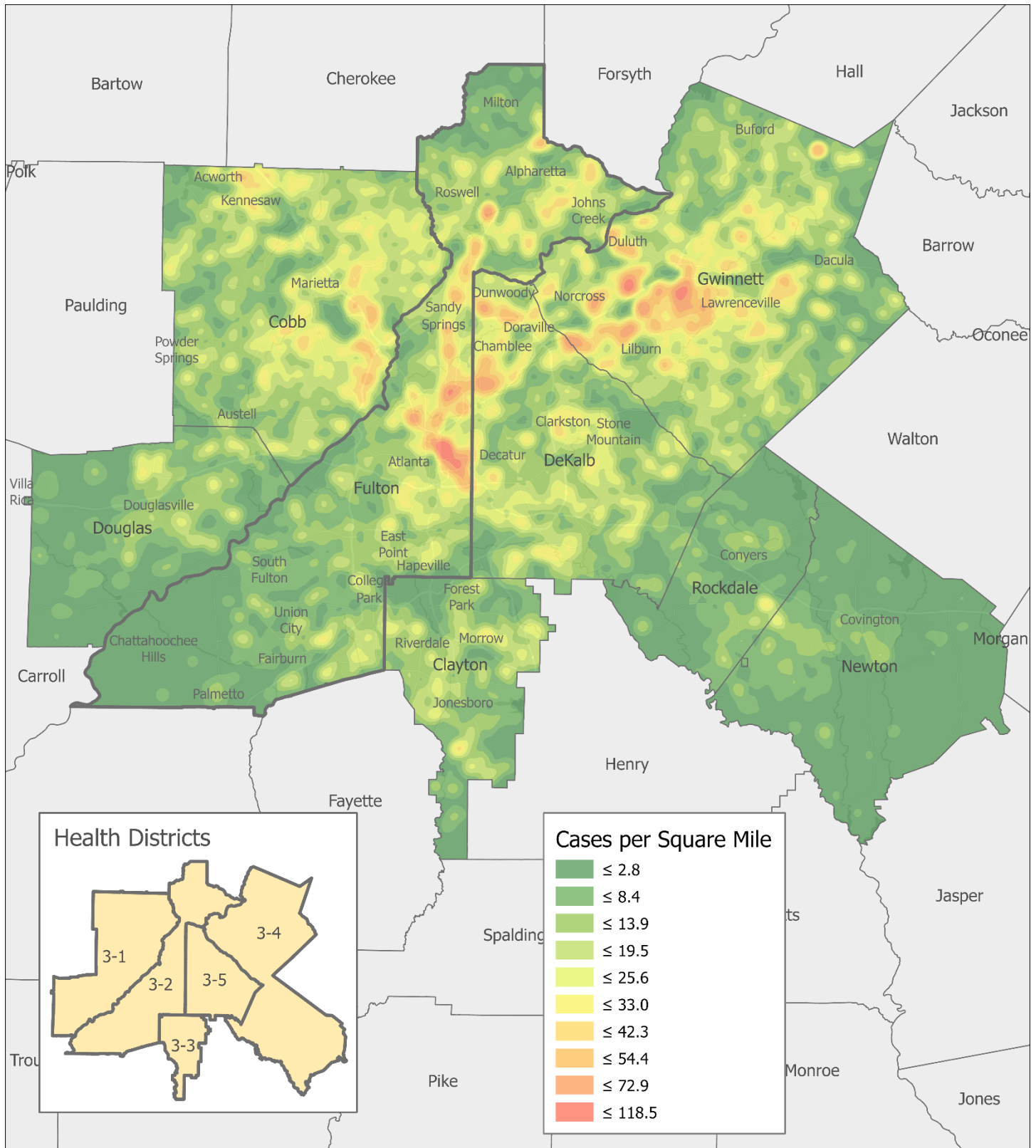
COVID-19 CASE TRENDS IN FULTON AND SURROUNDING DISTRICTS

**Fig. 13. Daily Case Counts for Atlanta Metro Districts
(Averaged over 7 days)**



*Graph shows the average number of cases calculated from the daily cumulative case counts in the metro Atlanta districts. Increases in daily cumulative case counts may include cases diagnosed earlier during the pandemic but were only recently reported to the state as cases diagnosed belonging to these districts.

Fig. 14. COVID-19 Cases in Fulton County and Surrounding Districts (December 30, 2020 – January 12, 2021)



COVID-19 NEW CASE COUNTS BY ZIP CODE

Zip Code	Recent 14-day reporting period (12/30 – 1/12)	Previous 14-day reporting period (12/16 – 12/29)	% Change between reporting periods
All Fulton	8773	6573	↑ 33.5%
30004	496	347	↑ 42.9%
30005	284	232	↑ 22.4%
30009	190	115	↑ 65.2%
30022	611	461	↑ 32.5%
30023	0	<10	↓ 100.0%
30024	10	<10	↑ 25.0%
30075	372	307	↑ 21.2%
30076	439	293	↑ 49.8%
30080	0	0	-
30097	206	136	↑ 51.5%
30098	0	0	-
30135	<10	0	-
30138	0	0	-
30139	0	0	-
30213	344	220	↑ 56.4%
30268	93	57	↑ 63.2%
30291	213	117	↑ 82.1%
30296	43	23	↑ 87.0%
30301	<10	<10	-
30303	37	29	↑ 27.6%
30305	312	234	↑ 33.3%
30306	106	113	↓ 6.2%
30307	40	43	↓ 7.0%
30308	141	119	↑ 18.5%
30309	258	219	↑ 17.8%
30310	208	142	↑ 46.5%
30311	222	110	↑ 101.8%
30312	192	159	↑ 20.8%
30313	31	21	↑ 47.6%
30314	117	82	↑ 42.7%
30315	237	193	↑ 22.8%
30316	90	76	↑ 18.4%
30318	457	380	↑ 20.3%
30319	64	51	↑ 25.5%
30321	<10	<10	-
30324	155	147	↑ 5.4%
30326	65	54	↑ 20.4%
30327	262	209	↑ 25.4%
30328	338	296	↑ 14.2%
30331	445	337	↑ 32.0%
30334	0	<10	↓ 100.0%
30336	11	12	↓ 8.3%
30337	64	49	↑ 30.6%

Zip Code	Recent 14-day reporting period (12/30 – 1/12)	Previous 14-day reporting period (12/16 – 12/29)	% Change between reporting periods
30338	14	<10	↑ 55.6%
30339	48	23	↑ 108.7%
30340	0	0	-
30341	0	<10	↓ 100.0%
30342	347	270	↑ 28.5%
30344	250	155	↑ 61.3%
30345	<10	<10	-
30349	405	315	↑ 28.6%
30350	314	240	↑ 30.8%
30354	125	68	↑ 83.8%
30358	<10	<10	-
30363	21	12	↑ 75.0%
30374	<10	<10	-
30606	0	0	-
31131	0	<10	↓ 100.0%
31150	0	<10	↓ 100.0%
Unknown	81	71	-

¹**New cases:** Cases diagnosed in most recent 28 days (based on reported dates of positive sample collection). To allow for lag in reporting results of new diagnoses from samples collected in the most recent week, data used for incident diagnoses analyses were moved back by one week. ²**Percent change:** These reflect the percentage increase or decrease of new diagnoses between the 14 days preceding the past 7 days and the 14 days preceding that. Changes in ZIP codes with less than 10 cases in both 2 week intervals are not reported

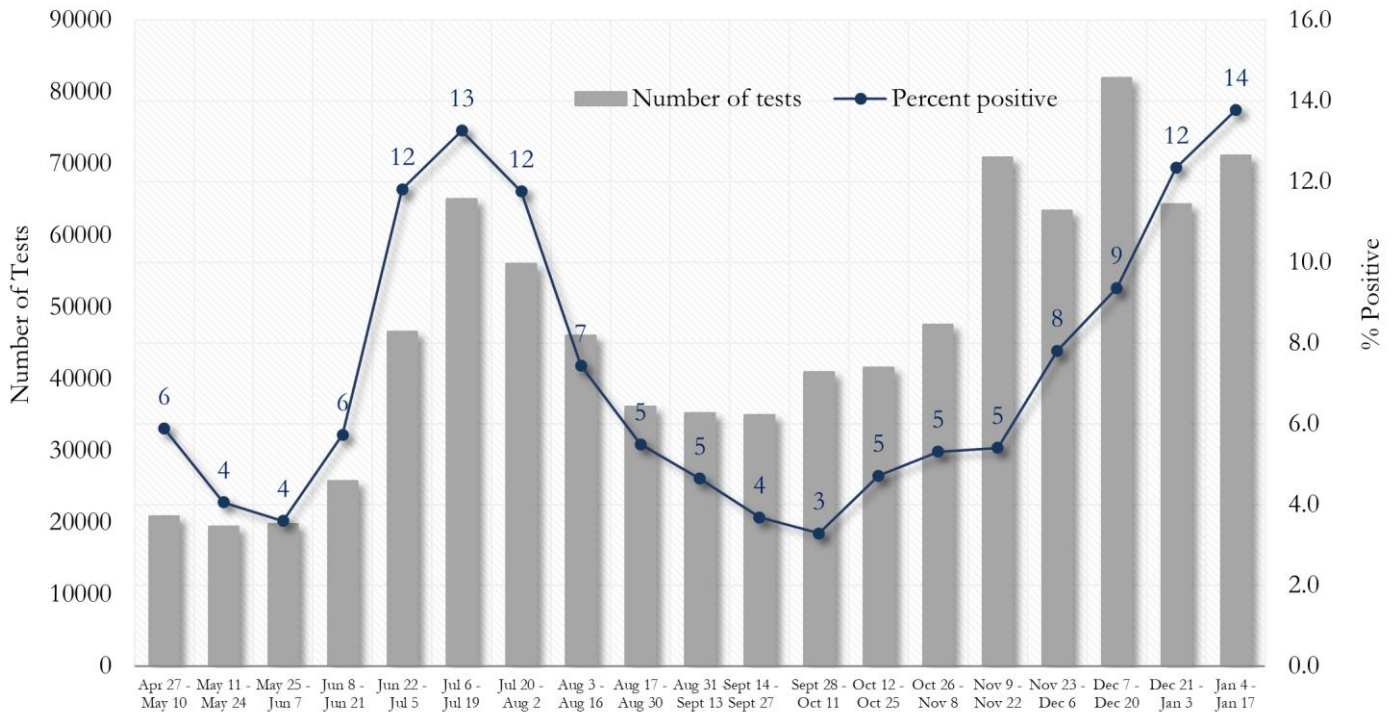
The following data are updated every two weeks.

Last updated 1/19/2021

These data are generated using a fixed start date and counted forward in 14-day intervals. Using these time blocks allows for the stability in trends over time and accounts for delays in reporting lab results.

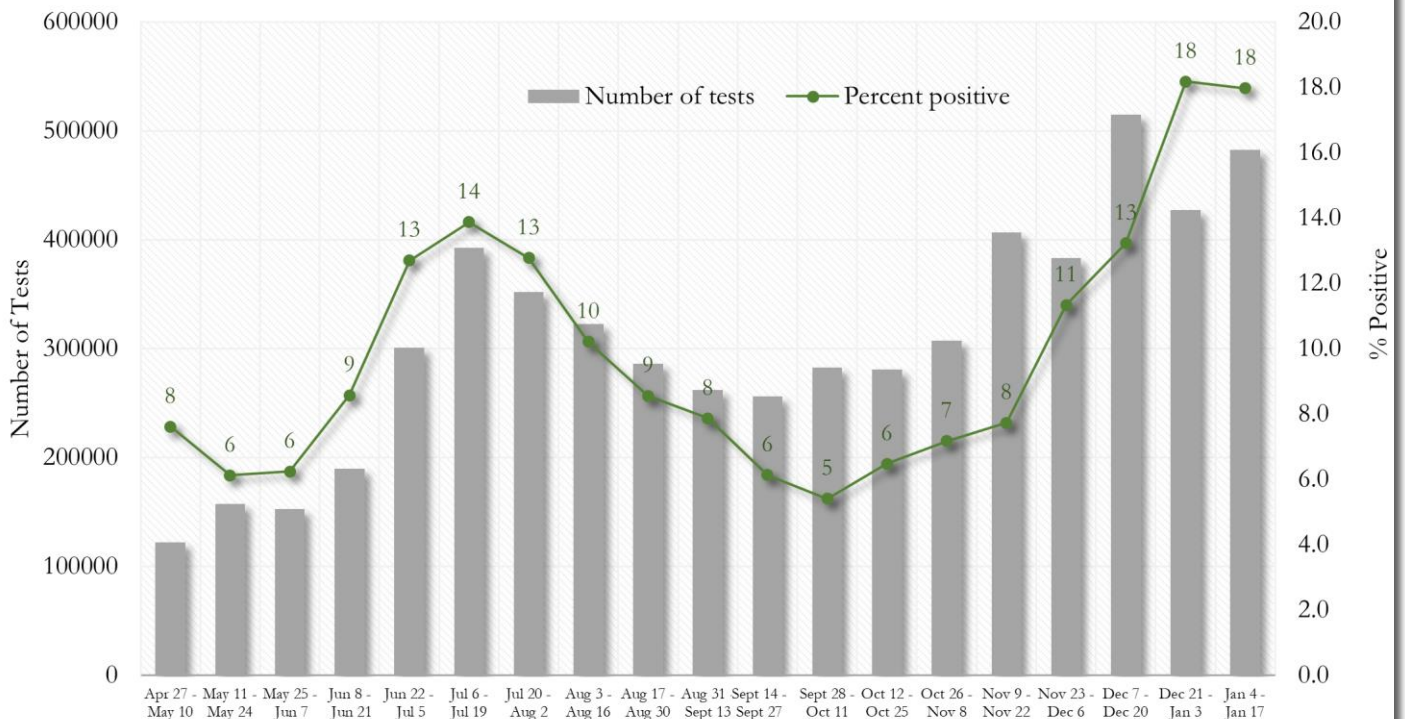
COVID-19 TESTING AND POSITIVITY IN FULTON COUNTY AND GEORGIA

Fig. 15. Trends in Positive COVID-19 Tests in Fulton County by 14-day Periods



*Data on Polymerase Chain Reaction (PCR) tests only included.

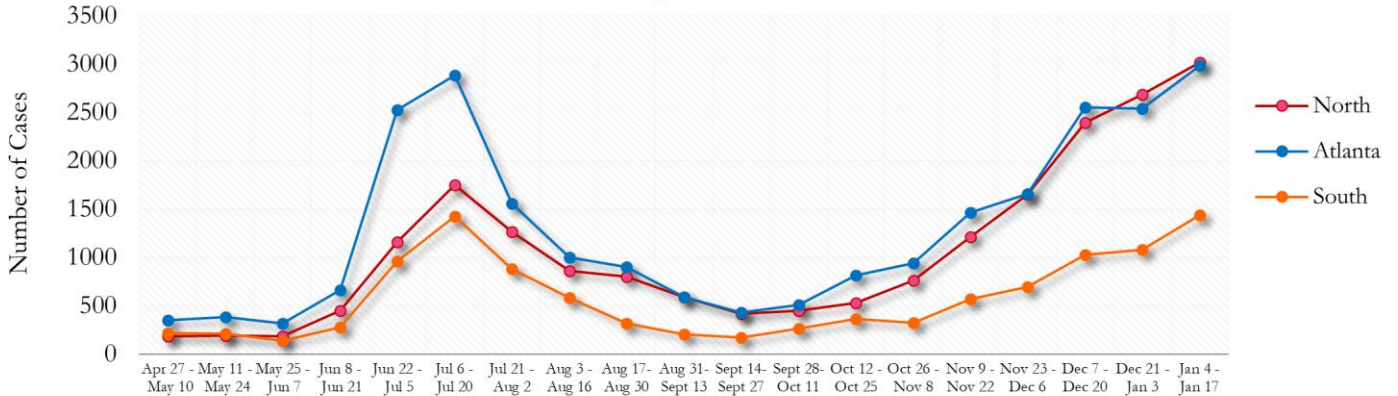
Fig. 16. Trends in Positive COVID-19 Tests in Georgia by 14-day Periods



*Data on Polymerase Chain Reaction (PCR) tests only included.

TRENDS IN COVID-19 CASES AMONG DEMOGRAPHIC GROUPS (14 DAY PERIODS)

Fig. 17. Trends in Geographic distribution of COVID-19 Cases in Fulton County by 14-day periods



In the past two weeks, the city of Atlanta and the Northern region have accounted for almost equal amounts of new cases.
 *North - Includes all Fulton cities north of Atlanta (Alpharetta, Milton, Johns Creek, Roswell, Sandy Springs, Mountain Park)
 *South - Includes all Fulton cities south of Atlanta (Chattahoochee Hills, College Park, East Point, Hapeville, Palmetto, South Fulton, Fairburn, and Union City)

Fig. 18. Trends in Racial Distribution of COVID-19 Cases in Fulton County by 14-day periods

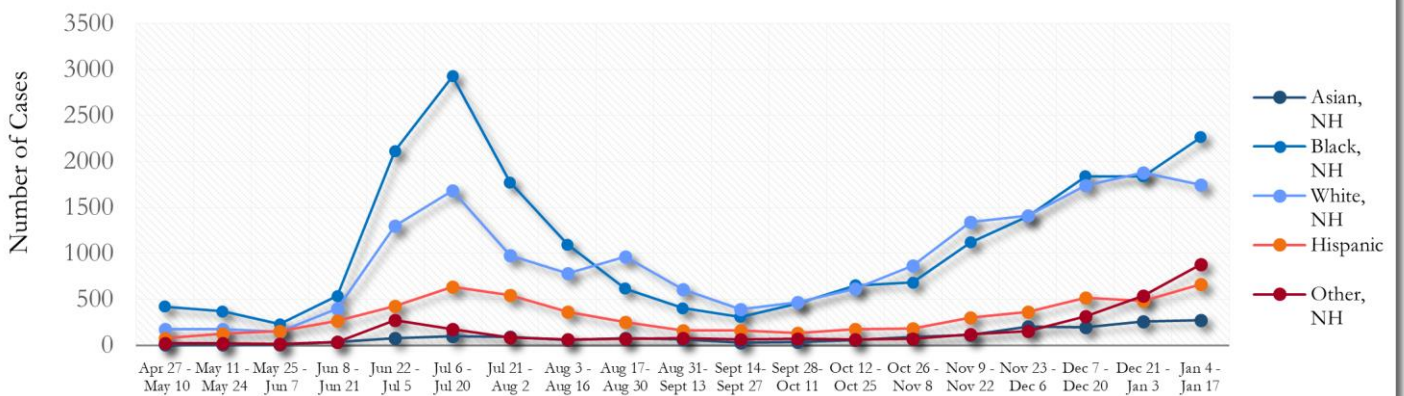
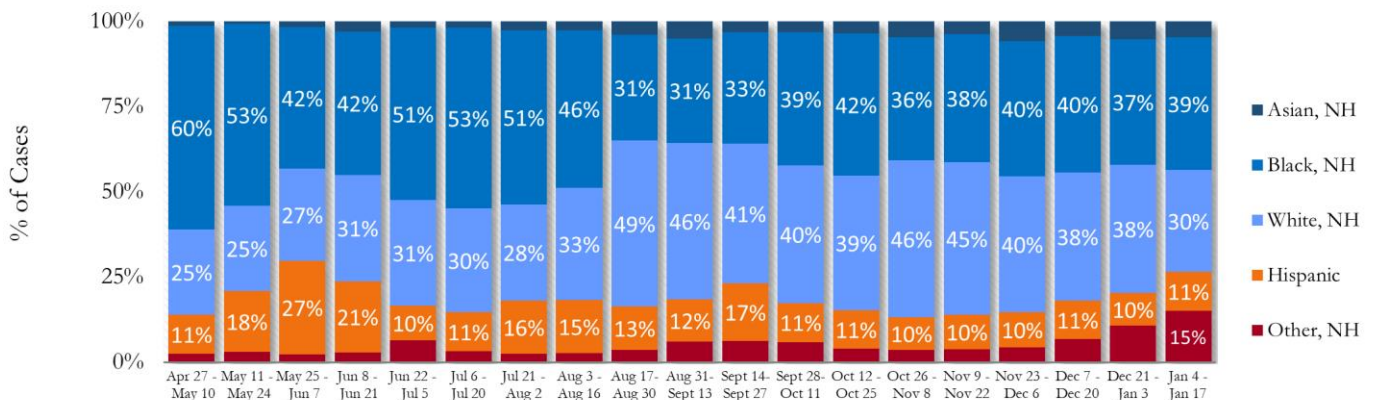


Fig. 19. Racial Distribution of COVID-19 Cases in Fulton County by 14-day periods



About 16% of COVID cases are missing data on patient race and ethnicity. The majority of new cases in the past two weeks were Black, NH (39%) and White, NH (30%).

Fig. 20. Trends in Gender Distribution of COVID-19 Cases in Fulton County by 14-day periods

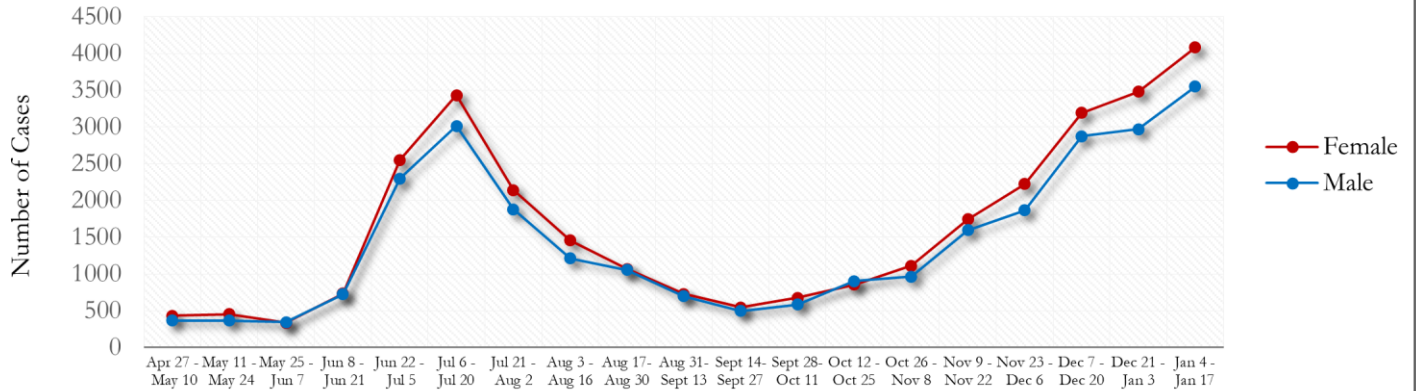
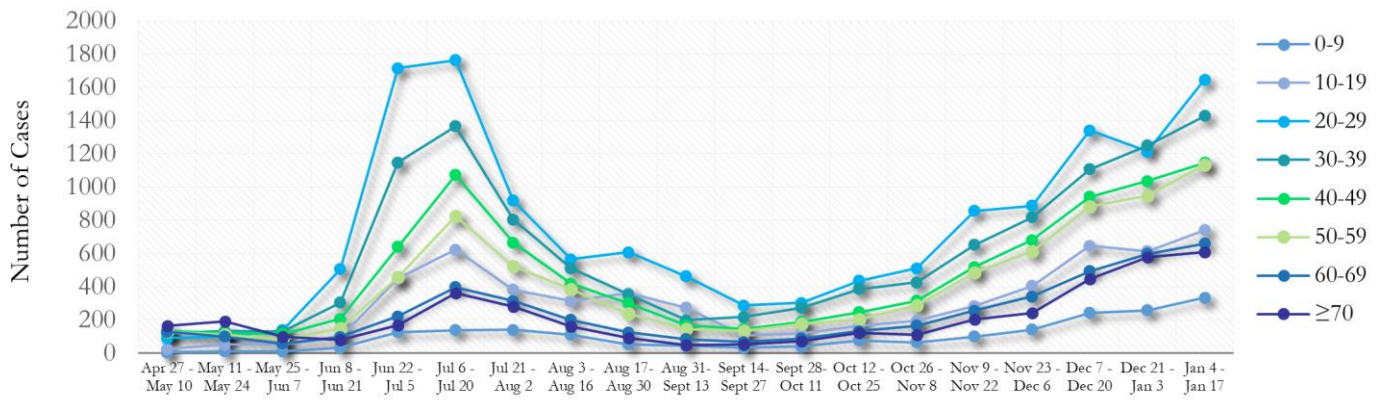
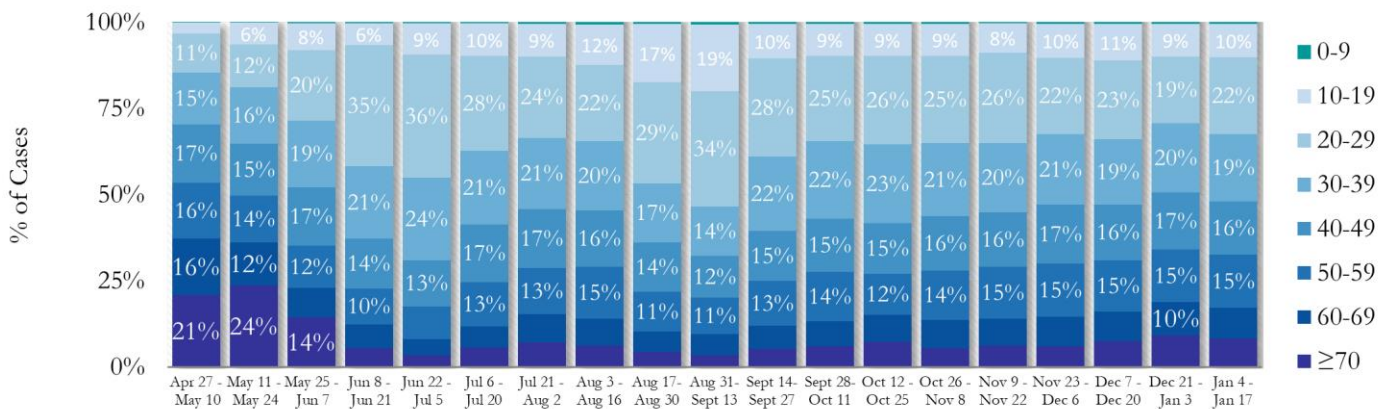


Fig. 21. Trends in Age Distribution of COVID-19 Cases in Fulton County by 14-day periods



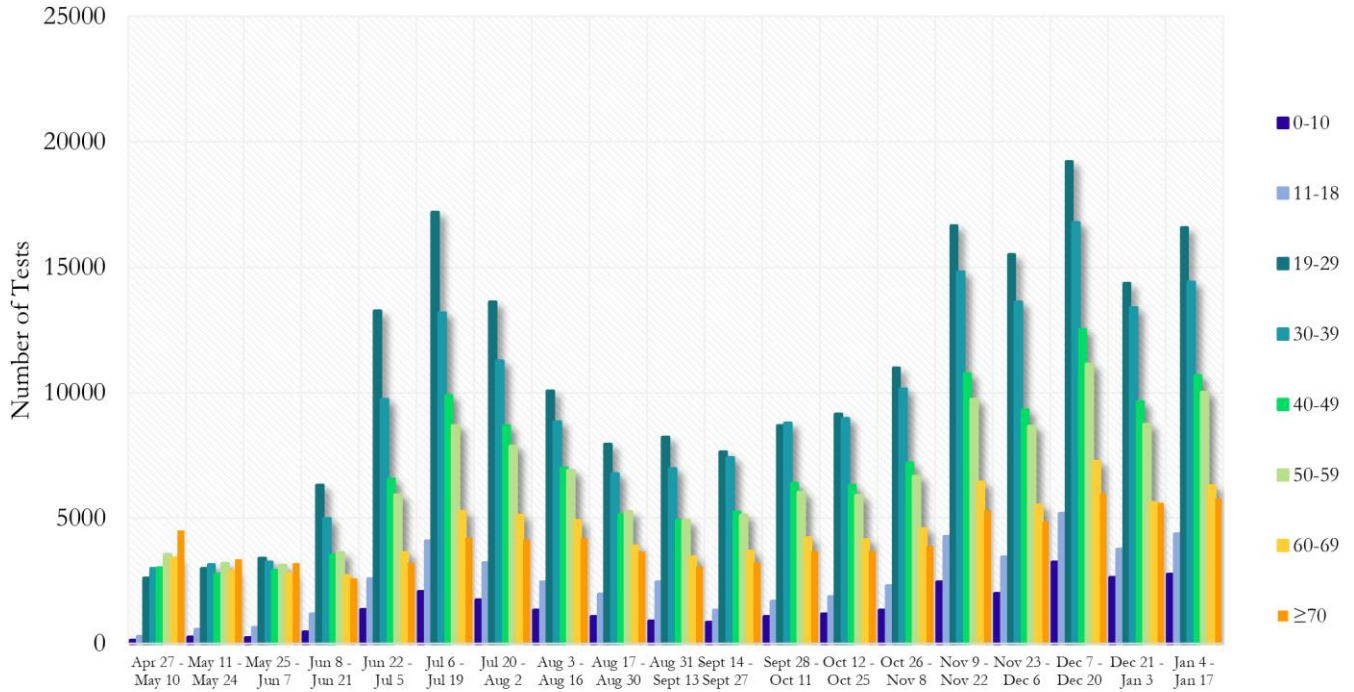
In the most recent two weeks, 20-29 year olds accounted for the highest number of new cases among all age group, followed by 30-39 year olds.

Fig. 22. Age Distribution of COVID-19 Cases in Fulton County by 14-day periods



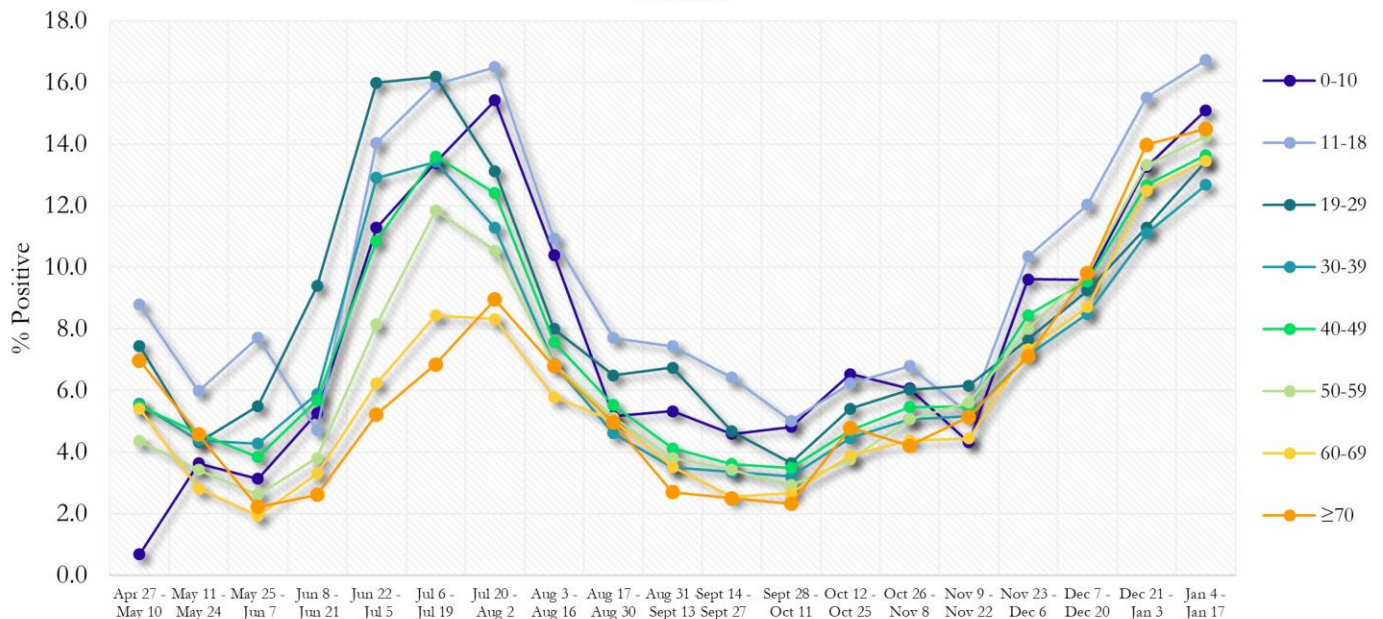
COVID-19 TESTING AND POSITIVITY IN FULTON COUNTY BY AGE AND RACE

Fig. 23. COVID-19 Tests by Age in Fulton County by 14-day Periods



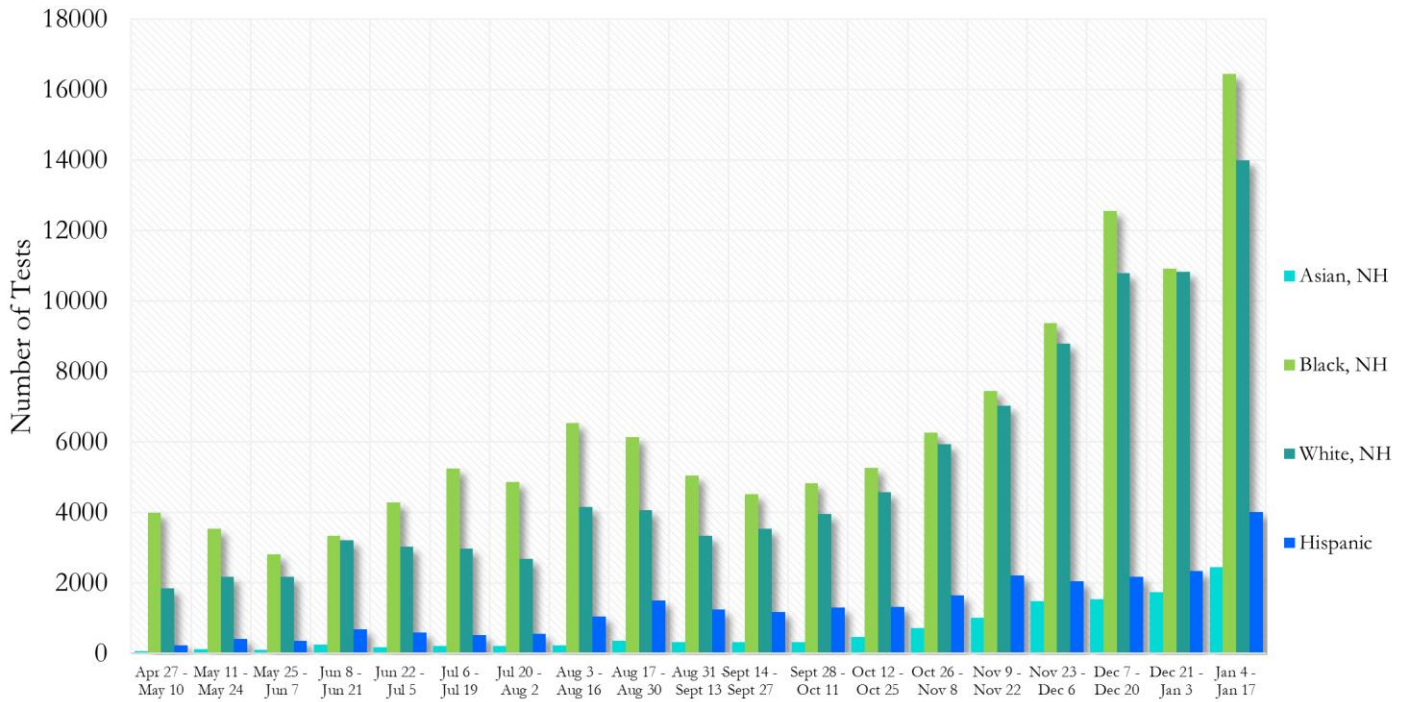
*Data on Polymerase Chain Reaction (PCR) tests only included.

Fig. 24. Percent Positive COVID-19 Tests by Age Group in Fulton County by 14-day Periods



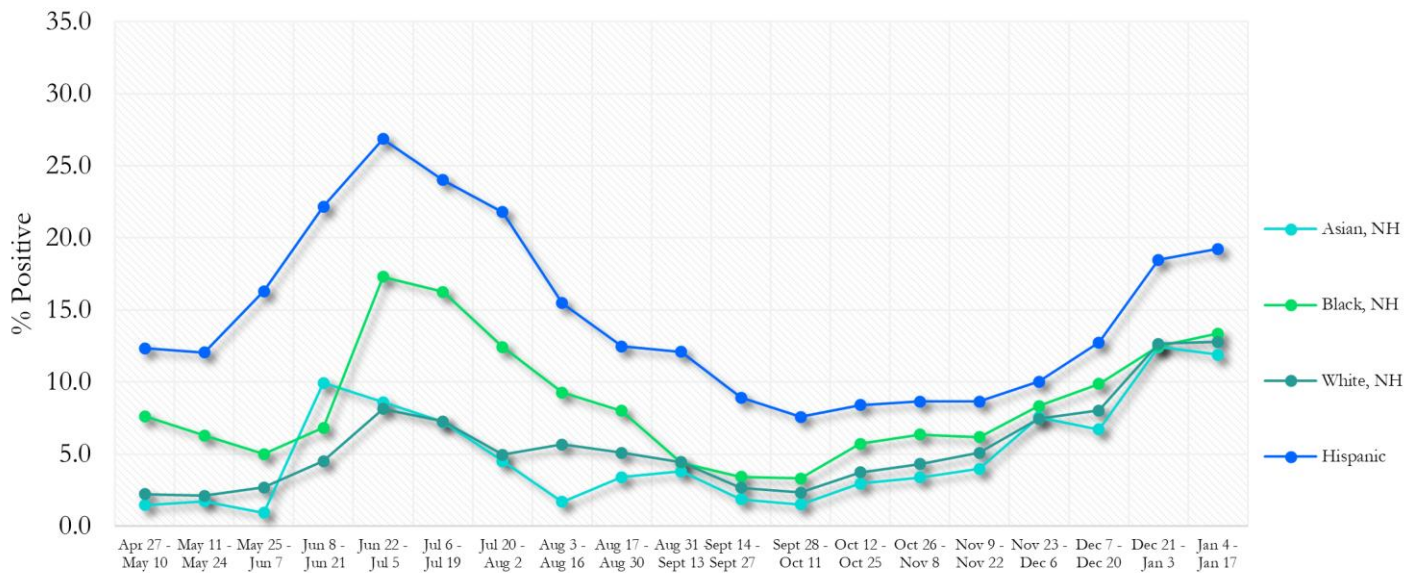
*Data on Polymerase Chain Reaction (PCR) tests only included.

Fig. 25. COVID-19 Tests by Race and Ethnicity in Fulton County by 14-day Periods



*Data on Polymerase Chain Reaction (PCR) tests only included. For the recent two weeks, 49% of test results did not have race/ethnicity information.

Fig. 26. Percent Positive COVID-19 Tests by Race and Ethnicity in Fulton County by 14-day Periods

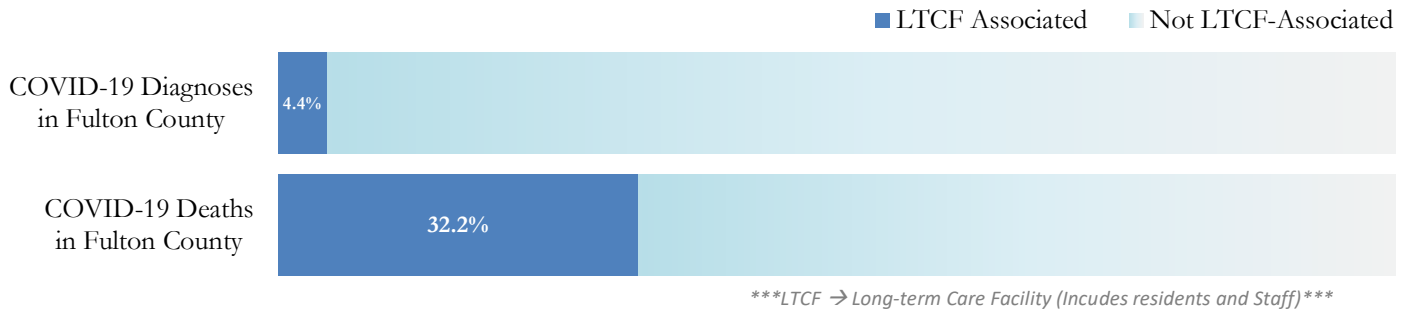


*Data on Polymerase Chain Reaction (PCR) tests only included.

COVID-19 IN LONG-TERM CARE FACILITIES IN FULTON COUNTY

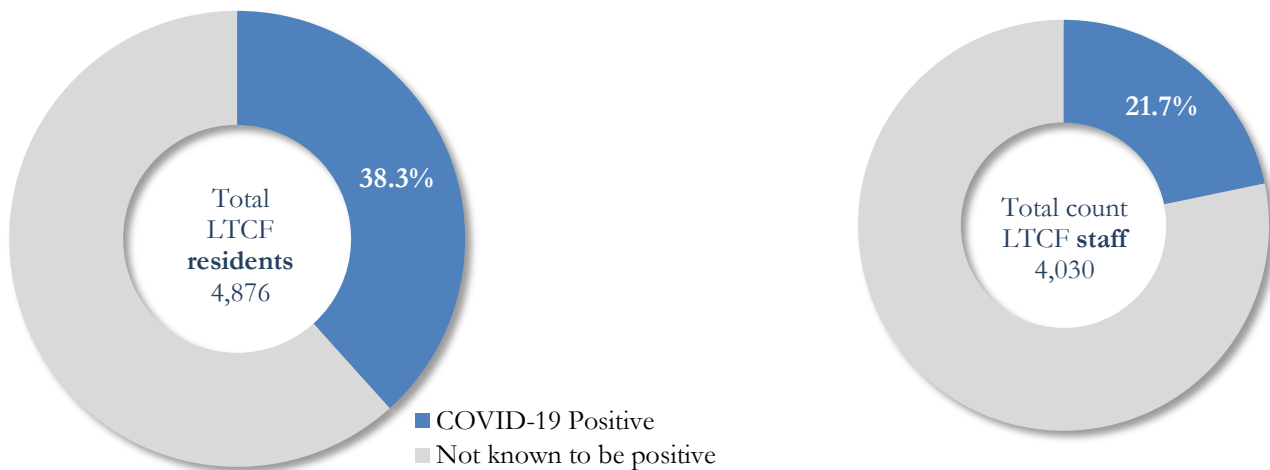
Older persons (aged 65 years and older) and persons who live in nursing homes or other long-term care facilities seem to be at higher risk for developing more serious complications from COVID-19. Extra precautions are recommended for individuals within this risk groups – Centers for Disease Control and Prevention (CDC 2020) <https://www.cdc.gov/coronavirus/2019-ncov/need-extra-precautions/people-at-higher-risk.html>

Fig. 27. COVID-19 Diagnoses and Deaths in Fulton County Associated with Long-Term Care Facilities



COVID-19 POSITIVITY:

Fig. 28. COVID-19 Positivity at 64 reporting Long-Term Care Facilities (LTCF) in Fulton County



COVID-19 Cases, Hospitalizations, and Deaths among 64 reporting Long-Term Care Facilities in Fulton County

	LTCF Residents (n=4,876)			LTCF Staff (n=4,030)		
	Cases	Hospitalizations	Deaths	Cases	Hospitalizations	Deaths
Average (count per fac.) ¹	29	5	4	14	1	<0.1
Median (count per fac.) ¹	12	3	1	9	0	0
Lowest counts	0	0	0	0	0	0
Highest counts	143	48	30	70	8	2
Total Count	1869 (38.3%)^a	337 (18.0%)^b	260 (13.9%)^b	876 (21.7%)^a	33 (3.8%)^b	5 (<1.0%)^b

^a Percentage shown reflects proportion of total residents/staff tested who were positive (i.e. COVID-19 Positivity). | ^b Percentages shown are proportions of persons residents/staff diagnosed with COVID-19 who were hospitalized or died after diagnoses.

The following data are updated monthly.

Last updated 1/19/21

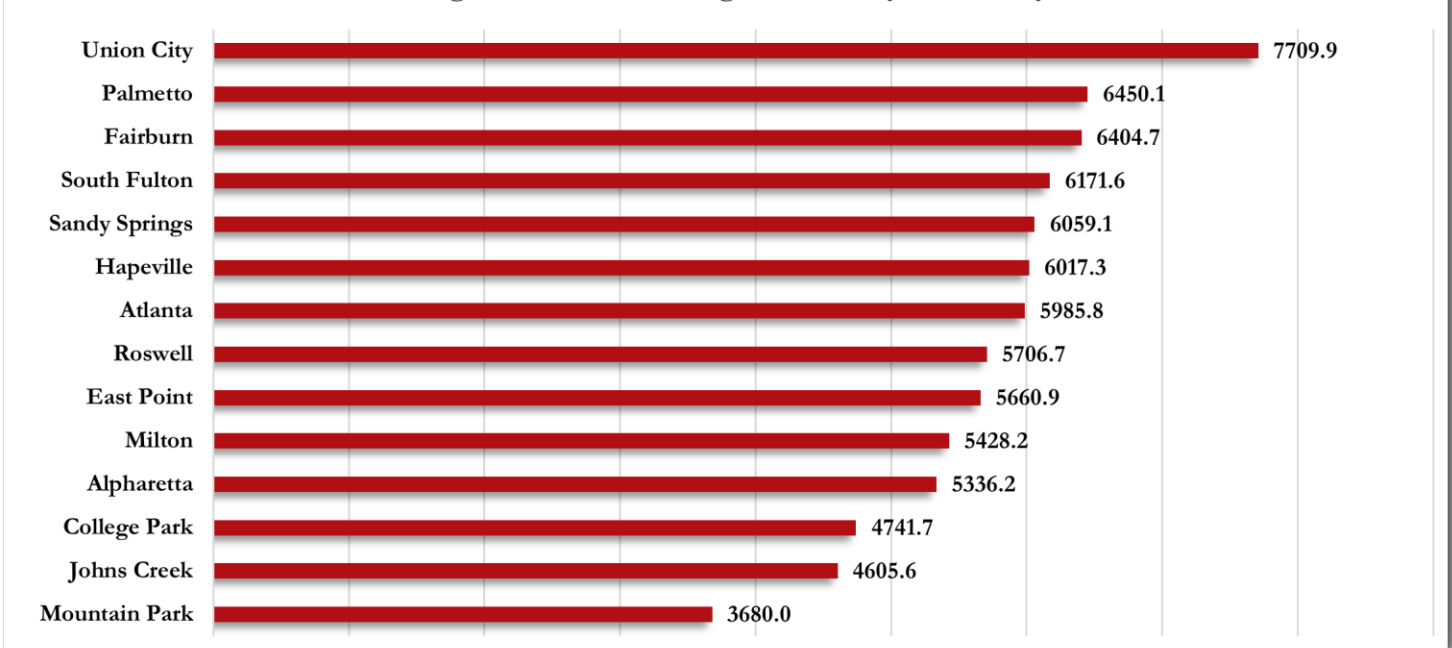
For previous cumulative counts, [visit the Fulton County website](#) where past COVID-19 Epidemiology Reports are posted.

COVID-19 CASE COUNTS AND RATES BY CITY

	Current Cumulative Total (1/19/21)			Prior Total (12/18/20)
	Count	%	Cum. Rate ¹	Count
Alpharetta	3451	5.5%	5336.2	2223
Atlanta	26408	42.3%	5985.8	19292
Chattahoochee Hills	98	0.2%	3418.2	57
College Park	658	1.1%	4741.7	520
East Point	1980	3.2%	5660.9	1473
Fairburn	942	1.5%	6404.7	691
Hapeville	396	0.6%	6017.3	298
Johns Creek	3852	6.2%	4605.6	2423
Milton	2072	3.3%	5428.2	1296
Mountain Park	23	0.0%	3680.0	11
Palmetto	282	0.5%	6450.1	177
Roswell	5379	8.6%	5706.7	3578
Sandy Springs	6387	10.2%	6059.1	4363
South Fulton	5870	9.4%	6171.6	4213
Union City	1616	2.6%	7709.9	1196
Unknown	2949	4.7%	-	2536

¹**Cumulative diagnosis rate:** Population estimates from US Census Bureau used to calculate cumulative diagnoses rate. All rates shown are per 100,000 persons**Data cleaning (either during case interviews or address geo-coding) may lead to reassignment of few cases from one territory to another based on their corrected addresses. These may appear as "decreases" when compared to the previous count. These do not reflect errors in the data collection or analysis process but only reflect the minor day-to-day fluctuations in case counts that arise in an evolving public health database like COVID's. **Note: All data reported are preliminary and subject to change.**

Fig. 28. Cumulative Diagnosis Rate by Fulton City



COVID-19 CUMULATIVE CASE COUNTS BY ZIP CODE

Zip Code	Cumulative Case Count 1/19/21	Current % of Total	Previous Cumulative Case Count 12/18/20
All Fulton	62363	100%	44347
30004	2651	4.3%	1673
30005	1627	2.6%	1019
30009	1176	1.9%	811
30022	3542	0.8%	2242
30023	18	<0.1%	12
30024	63	0.1%	38
30075	2499	4.0%	1715
30076	2623	4.2%	1724
30080	<10	<0.1%	<10
30097	1022	1.6%	635
30098	-	-	-
30135	<10	<0.1%	<10
30138	<10	<0.1%	<10
30139	-	-	-
30213	2345	3.8%	1669
30268	455	0.7%	281
30291	1577	2.5%	1158
30296	185	0.3%	116
30301	24	<0.1%	15
30303	557	0.9%	481
30305	1997	3.2%	1386
30306	850	1.4%	603
30307	401	0.6%	298
30308	1269	2.0%	969
30309	1932	3.1%	1388
30310	1500	2.4%	1080
30311	1573	2.5%	1155
30312	1708	2.7%	1266
30313	477	0.8%	410
30314	1018	1.6%	775
30315	1910	3.1%	1371
30316	747	1.2%	557
30318	3573	5.7%	2623
30319	398	0.6%	258
30321	17	<0.1%	13
30324	1735	2.8%	1383
30326	590	0.9%	453
30327	1593	2.6%	1051
30328	2256	3.6%	1511
30331	3385	5.4%	2442
30334	15	<0.1%	14
30336	144	0.2%	118
30337	622	1.0%	495

Zip Code	Cumulative Case Count 1/19/21	Current % of Total	Previous Cumulative Case Count 12/18/20
30338	138	0.2%	114
30339	370	0.6%	313
30340	36	<0.1%	37
30341	35	<0.1%	38
30342	2549	4.1%	1842
30344	1811	2.9%	1356
30345	29	<0.1%	27
30349	3467	5.6%	2595
30350	1804	2.9%	1170
30354	862	1.4%	640
30358	10	<0.1%	<10
30363	158	0.3%	118
30374	43	<0.1%	36
30606	<10	<0.1%	<10
31131	<10	<0.1%	<10
31150	<10	<0.1%	<10
Unknown	951	1.5%	831

Data cleaning (either during case interviews or address geo-coding) may lead to reassignment of few cases from one territory to another based on their corrected addresses. These may appear as "decreases" when compared to the previous count. These do not reflect errors in the data collection or analysis process but only reflect the minor day-to-day fluctuations in case counts that arise in an evolving public health database like COVID's. **Note:** Sharp increases in territorial COVID case counts often reflect new cases diagnosed at long term care facilities located in those territories during facility-wide /mass screening events **All data reported are preliminary and subject to change.

DEMOGRAPHIC DISTRIBUTIONS – COVID-19 CASES AND DEATHS

C. Cumulative distribution of COVID-19 cases by gender, age, and race in Fulton County by Fulton Region

	North Fulton Cities ¹ Count (%)	Atlanta Count (%)	South Fulton Cities ² Count (%)	Unknown City Count (%)	All Fulton Count (%)
Total COVID-19 cases	21164	26408	11842	2949	62363
Gender: Female	11003 (52%)	13373 (51%)	6786 (57%)	1491 (51%)	32653 (52%)
Male	10000 (47%)	12770 (48%)	4985 (42%)	1385 (47%)	29140 (47%)
Unknown*	161 (1%)	265 (1%)	71 (1%)	73 (2%)	570 (1%)
Age: 0-9	831 (4%)	634 (2%)	432 (4%)	88 (3%)	1985 (3%)
10-19	2876 (14%)	1915 (7%)	943 (8%)	210 (7%)	5944 (10%)
20-29	4258 (20%)	7523 (28%)	2143 (18%)	711 (24%)	14635 (23%)
30-39	3213 (15%)	5855 (22%)	2394 (20%)	625 (21%)	12087 (19%)
40-49	3348 (16%)	3537 (13%)	2158 (18%)	456 (15%)	9499 (15%)
50-59	3320 (16%)	2946 (11%)	1744 (15%)	401 (14%)	8411 (13%)
60-69	1733 (8%)	1945 (7%)	1085 (9%)	228 (8%)	4991 (8%)
≥70	1575 (7%)	1984 (8%)	927 (8%)	218 (7%)	4704 (8%)
Unknown*	10 (0%)	69 (0%)	16 (0%)	12 (0%)	107 (0%)
Race: Asian, NH	1199 (6%)	520 (2%)	59 (0%)	81 (3%)	1859 (3%)
Black, NH	2207 (10%)	11051 (42%)	8459 (71%)	997 (34%)	22714 (36%)
White, NH	9371 (44%)	7479 (28%)	687 (6%)	775 (26%)	18312 (29%)
Hispanic	3339 (16%)	1587 (6%)	909 (8%)	287 (10%)	6122 (10%)
Other, NH	1366 (6%)	1319 (5%)	325 (3%)	151 (5%)	3161 (5%)
Unknown*	3682 (17%)	4452 (17%)	1403 (12%)	658 (22%)	10195 (16%)

*Unknown includes cases not yet interviewed.

D. Cumulative distribution of COVID-19 deaths by gender, age, and race in Fulton County by Fulton Region

	North Fulton Cities ¹ Count (%)	Atlanta Count (%)	South Fulton Cities ² Count (%)	Unknown City Count (%)	All Fulton Count (%)
Total COVID-19 cases	181	390	222	31	824
Gender: Female	79 (44%)	178 (46%)	111 (50%)	12 (39%)	380 (46%)
Male	102 (56%)	212 (54%)	111 (50%)	18 (58%)	443 (54%)
Unknown*	0	0	0	<10	<10
Age: 0-29	<10	<10	<10	0	<10
30-39	<10	<10	<10	<10	14 (2%)
40-49	<10	<10	11 (5%)	<10	28 (3%)
50-59	<10	33 (8%)	28 (13%)	<10	73 (9%)
60-69	22 (12%)	74 (19%)	50 (23%)	<10	150 (18%)
≥70	143 (79%)	263 (67%)	128 (58%)	20 (65%)	554 (67%)
Unknown	0	0	0	0	0
Race: Asian, NH	<10	<10	<10	<10	14 (2%)
Black, NH	28 (15%)	307 (79%)	180 (81%)	11 (35%)	526 (64%)
White, NH	128 (71%)	68 (17%)	32 (14%)	16 (52%)	244 (30%)
Hispanic	15 (8%)	<10	<10	<10	31 (4%)
Other, NH	<10	<10	<10	<10	<10
Unknown*	<10	<10	0	0	<10