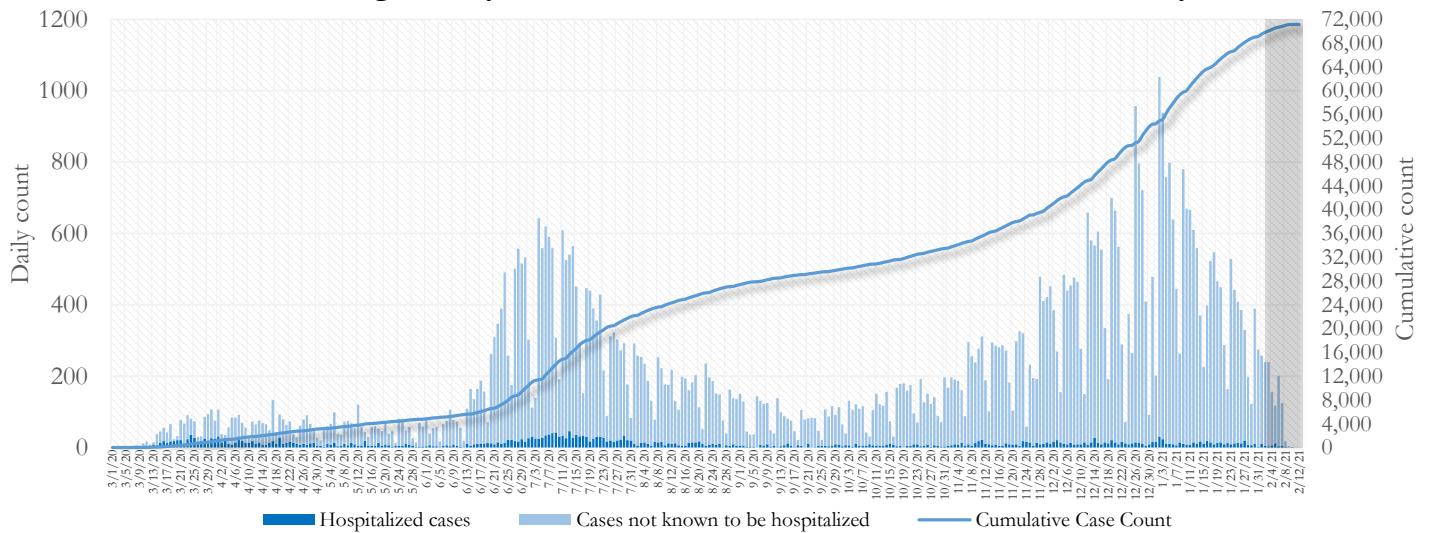


## SUMMARY

- As of February 12, 2021, Fulton County has recorded **71,132 cases of the 2019 novel coronavirus (COVID-19)** and **972 confirmed COVID-19 deaths**. 112 deaths are currently being reviewed by GA DPH to confirm cause of death.
- Of **4,709 new diagnoses** made between January 23 and February 5, the central portion of the county (Atlanta) accounted for 43% while the northern and southern parts accounted for 34% and 22% respectively.
- By city, new COVID-19 case rates range from 344.8 per 100,000 persons (Alpharetta) to 800.0 per 100,000 persons (Mountain Park). [**Fulton County Diagnoses Rates (per 100,000 persons): Cumulative – 6471.4; Incidence –428.4**]. See map showing incident case rate by ZIP code on Pg.12.
- Among all persons diagnosed with COVID-19 in Fulton County since July 1, **4.4% required hospitalization and 1.0% died**.
- Of all testing done in Fulton County between January 18 and January 31, the **percent positivity rate was 10.8%**.

**Fig 1. Daily and Cumulative COVID-19 cases in Fulton County, GA**



\*Counts shown reflect the number of confirmed cases as of 9:30 pm on 2/11/21 using the date of first positive sample collection. Where date of sample collection was not available or missing, the date of report creation in GA SENDSS was used instead. **Note:** Delays in data reporting may cause changes in data counts, particularly in the shaded portion. Data throughout this report are preliminary and subject to ongoing data cleaning processes, and thus are subject to change.

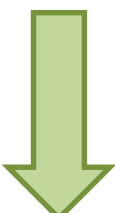
## DISTRIBUTION OF COVID-19 CASES BY REGION

**New cases:** 43% of the new COVID-19 cases in the past 2 weeks occurred in Atlanta while 34% and 22% occurred in the Northern and Southern regions of the county respectively.

Fulton Region	% Cumulative count	% New cases*
Atlanta	42.3%	42.7%
North <sup>1</sup>	34.3%	33.9%
South <sup>2</sup>	19.5%	22.0%
Unincorporated/Unknown	3.9%	1.4%

<sup>1</sup>Includes all Fulton County cities north of Atlanta (Alpharetta, Johns Creek, Milton, Mountain Park, Roswell, Sandy Springs,) |<sup>2</sup>Includes all cities south of Atlanta (Chattahoochee Hills, College Park, East Point, Fairburn, Hapeville, Palmetto, South Fulton, and Union City) \***New cases:** Cases diagnosed in the past 2 weeks only (between 1/23/21 – 2/5/21).

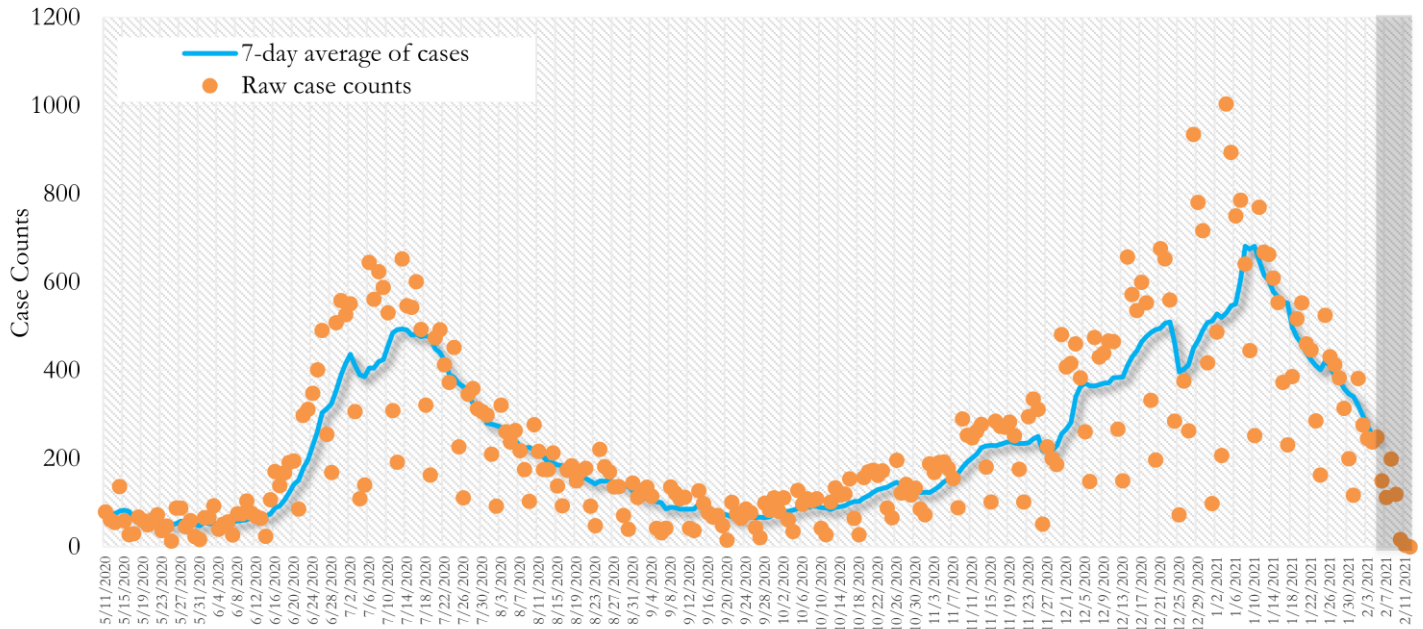
**In the recent two week reporting period (1/23-2/5), there were fewer new cases of COVID-19 in Fulton County than the previous two weeks (1/9-1/22).**



*\*Delayed a week to account for testing results turnaround time.*

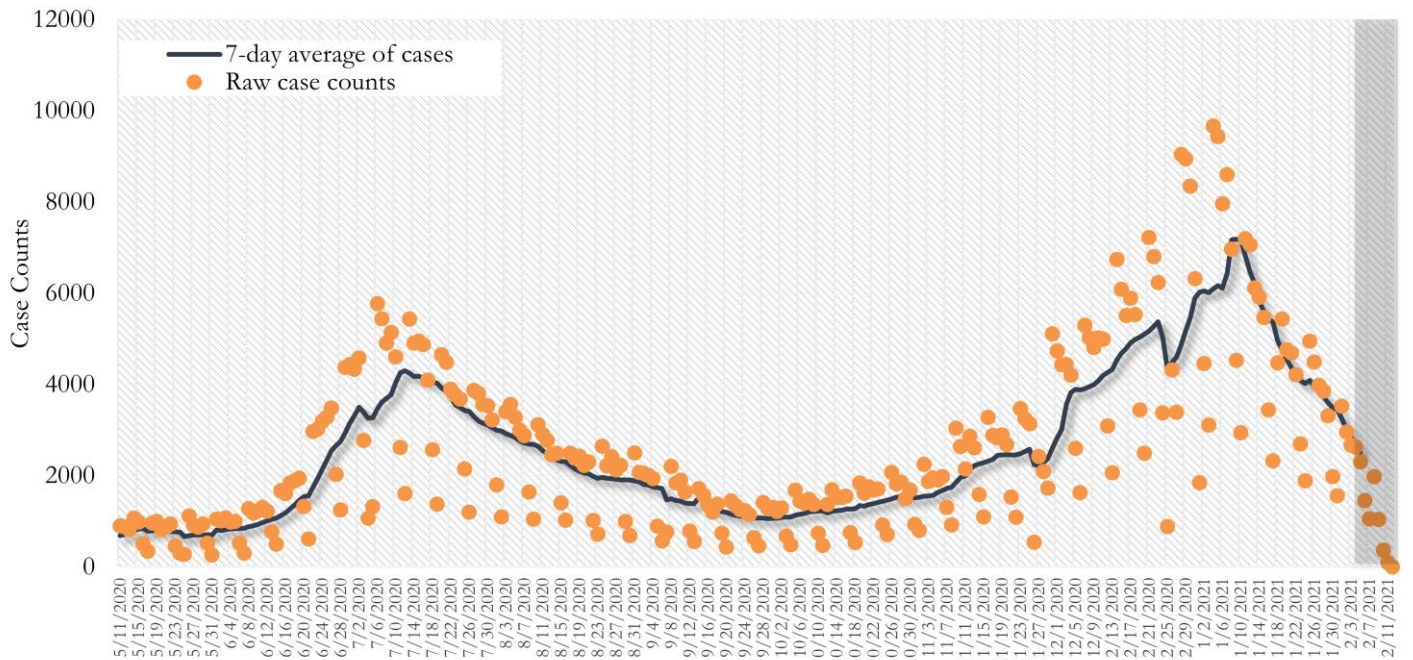
**TRENDS IN COVID-19 CASES, HOSPITALIZATIONS AND DEATHS (7-DAY MOVING AVE.)**

**Fig. 2. New COVID-19 Cases in Fulton County Daily (Averaged over 7 days)**



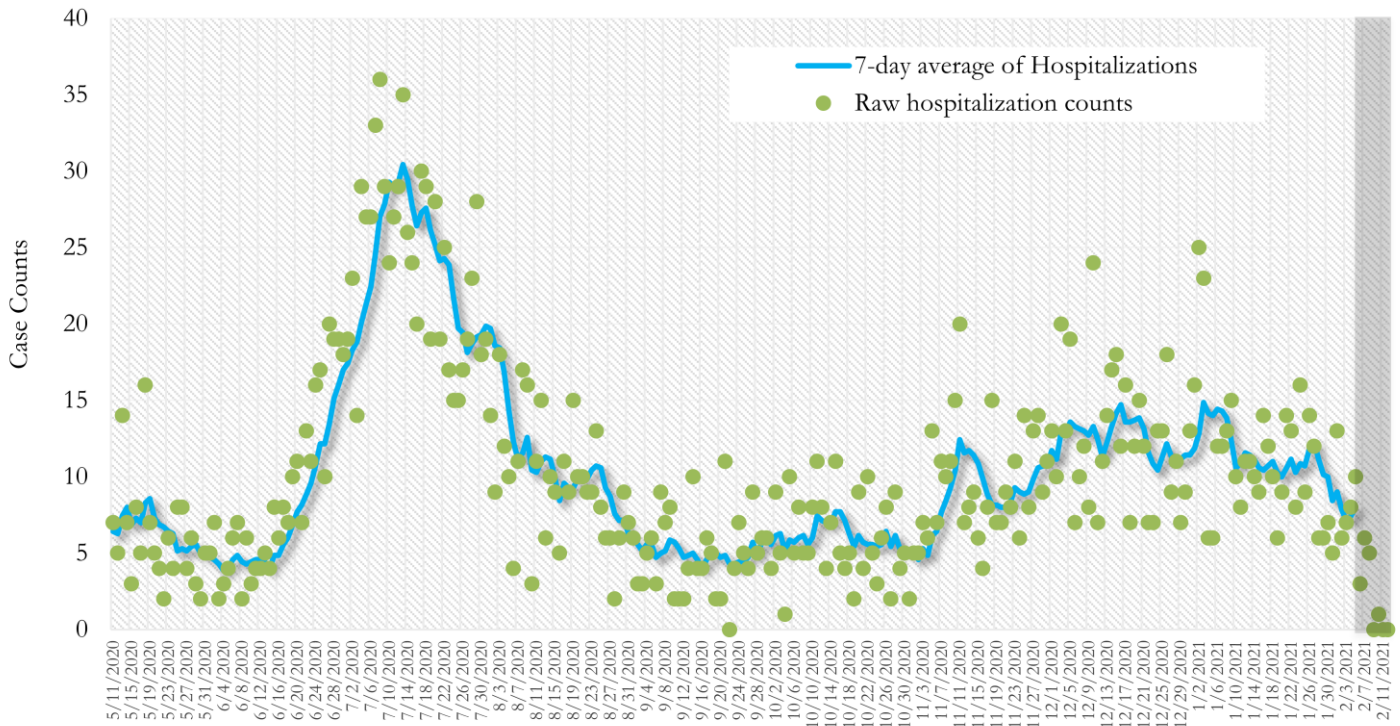
\*Date of collection of first positive sample used (report creation date used where sample collection date is missing). Graph above reflects the trend in COVID-19 diagnosis. Due to the high volume of testing in recent weeks, there have been delays in reporting lab results. Thus, the trend is subject to change as more lab results get added to the state surveillance database.

**Fig. 3. New COVID-19 Cases in Georgia State Daily (Averaged over 7 days)**



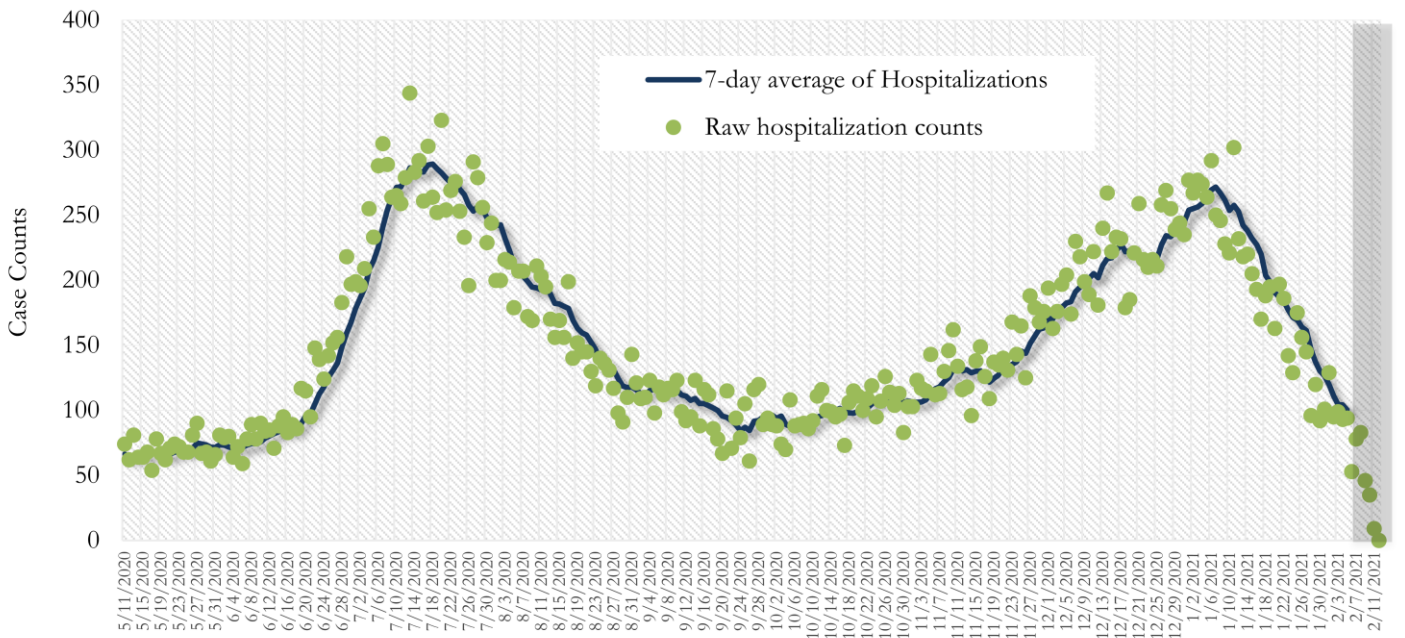
\*Date of collection of first positive sample used (report creation date used where sample collection date is missing). Graph above reflects the trend in COVID-19 diagnosis. Due to the high volume of testing in recent weeks, there have been delays in reporting lab results. Thus, the trend is subject to change as more lab results get added to the state surveillance database.

**Fig. 4. COVID-19 Hospitalizations in Fulton County Daily (Averaged over 7 days)**



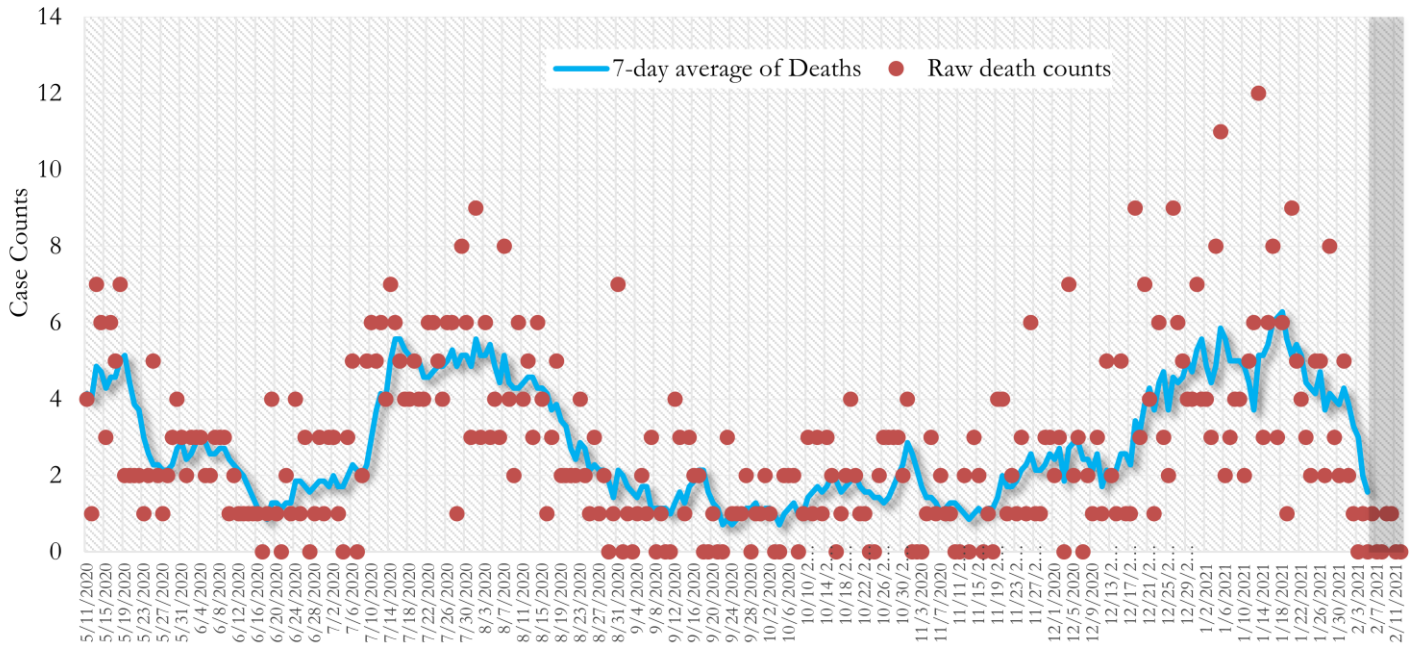
\*Reported date of hospital admission used. Graph above reflects the trend in COVID-19 hospitalizations. Due to the high volume of new cases being added daily, there have been delays in reporting hospitalization data. Thus, the trend is likely to change as more hospitalization data is reported in the state surveillance database.

**Fig. 5. COVID-19 Hospitalizations in Georgia State Daily (Averaged over 7 days)**



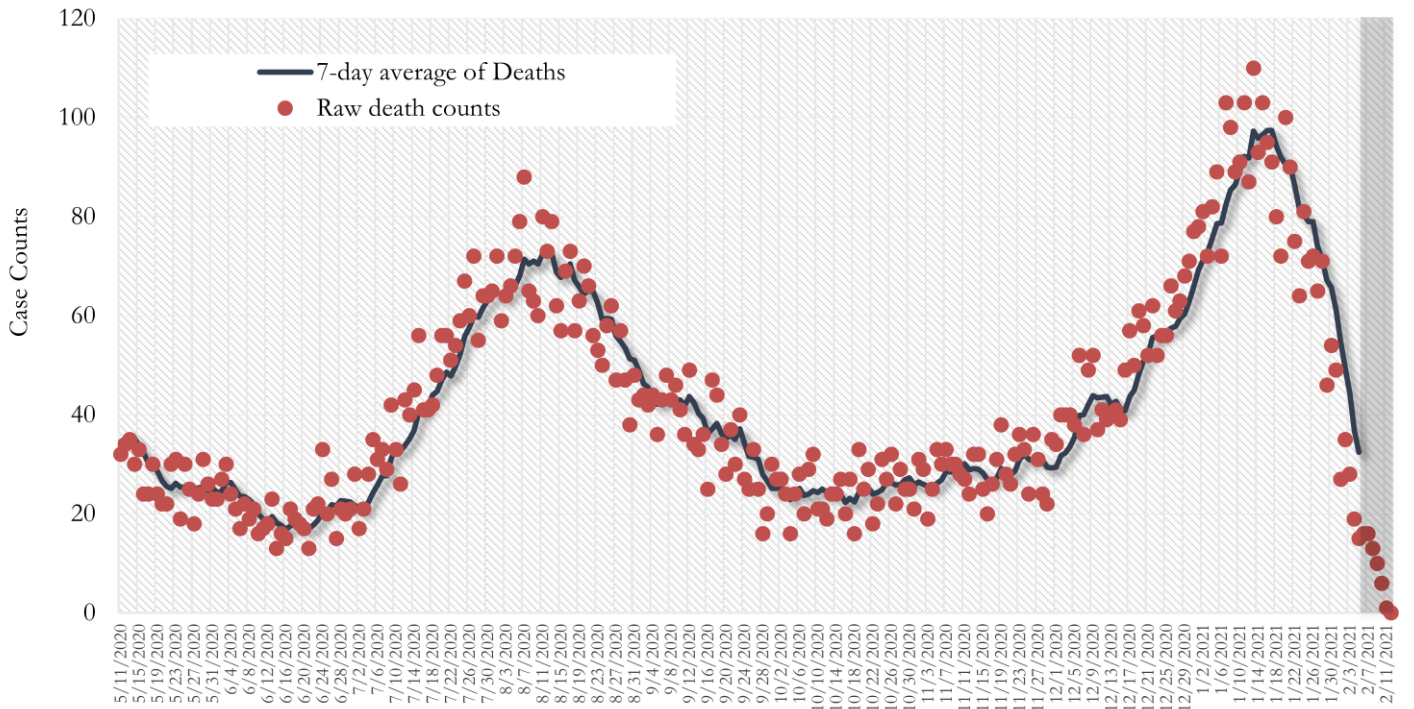
\*Reported date of hospital admission used. Graph above reflects the trend in COVID-19 hospitalizations. Due to the high volume of new cases being added daily, there have been delays in reporting hospitalization data. Thus, the trend is likely to change as more hospitalization data is reported in the state surveillance database.

Fig. 6. COVID-19 Deaths in Fulton County Daily (Averaged over 7 days)



\*Reported date of death used. Graph above reflects the trend in deaths attributed to COVID-19. The trend is likely to change as more data on deaths among persons with COVID-19 is reported in the state surveillance database.

Fig. 7. COVID-19 Deaths in Georgia State Daily (Averaged over 7 days)



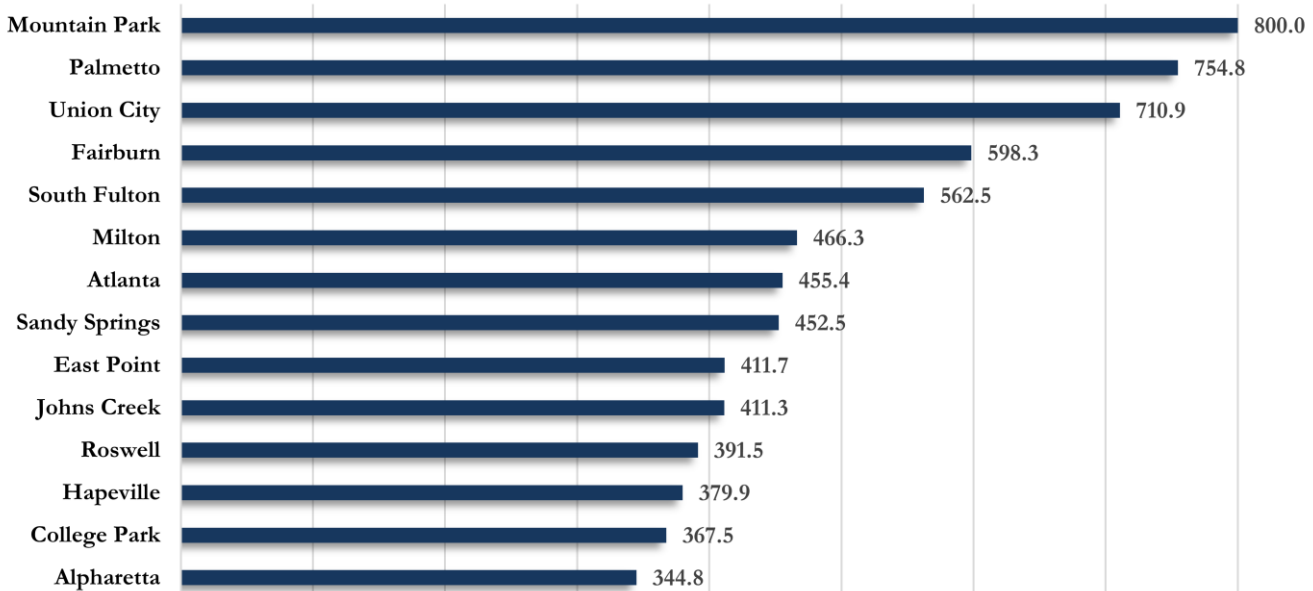
\*Reported date of death used. Graph above reflects the trend in deaths attributed to COVID-19. The trend is likely to change as more data on deaths among persons with COVID-19 is reported in the state surveillance database.

## COVID-19 CASE COUNTS AND RATES BY CITY

	Recent 14-day reporting period <sup>1</sup>	Preceding 14-day reporting period	% Change from preceding 14 days (%) <sup>2</sup>	Incidence Rate <sup>3</sup>
	1/23-2/5	1/9-1/22		
Alpharetta	223	477	↓ 53.2%	344.8
Atlanta	2009	2867	↓ 29.9%	455.4
Chattahoochee Hills	11	26	↓ 57.7%	383.7
College Park	51	56	↓ 8.9%	367.5
East Point	144	228	↓ 36.8%	411.7
Fairburn	88	119	↓ 26.1%	598.3
Hapeville	25	49	↓ 49.0%	379.9
Johns Creek	344	552	↓ 37.7%	411.3
Milton	178	251	↓ 29.1%	466.3
Mountain Park	<10	<10	↑ 400.0% <sup>4</sup>	800.0 <sup>4</sup>
Palmetto	33	52	↓ 36.5%	754.8
Roswell	369	716	↓ 48.5%	391.5
Sandy Springs	477	749	↓ 36.3%	452.5
South Fulton	535	708	↓ 24.4%	562.5
Union City	149	209	↓ 28.7%	710.9
Unknown	66	108	-	-

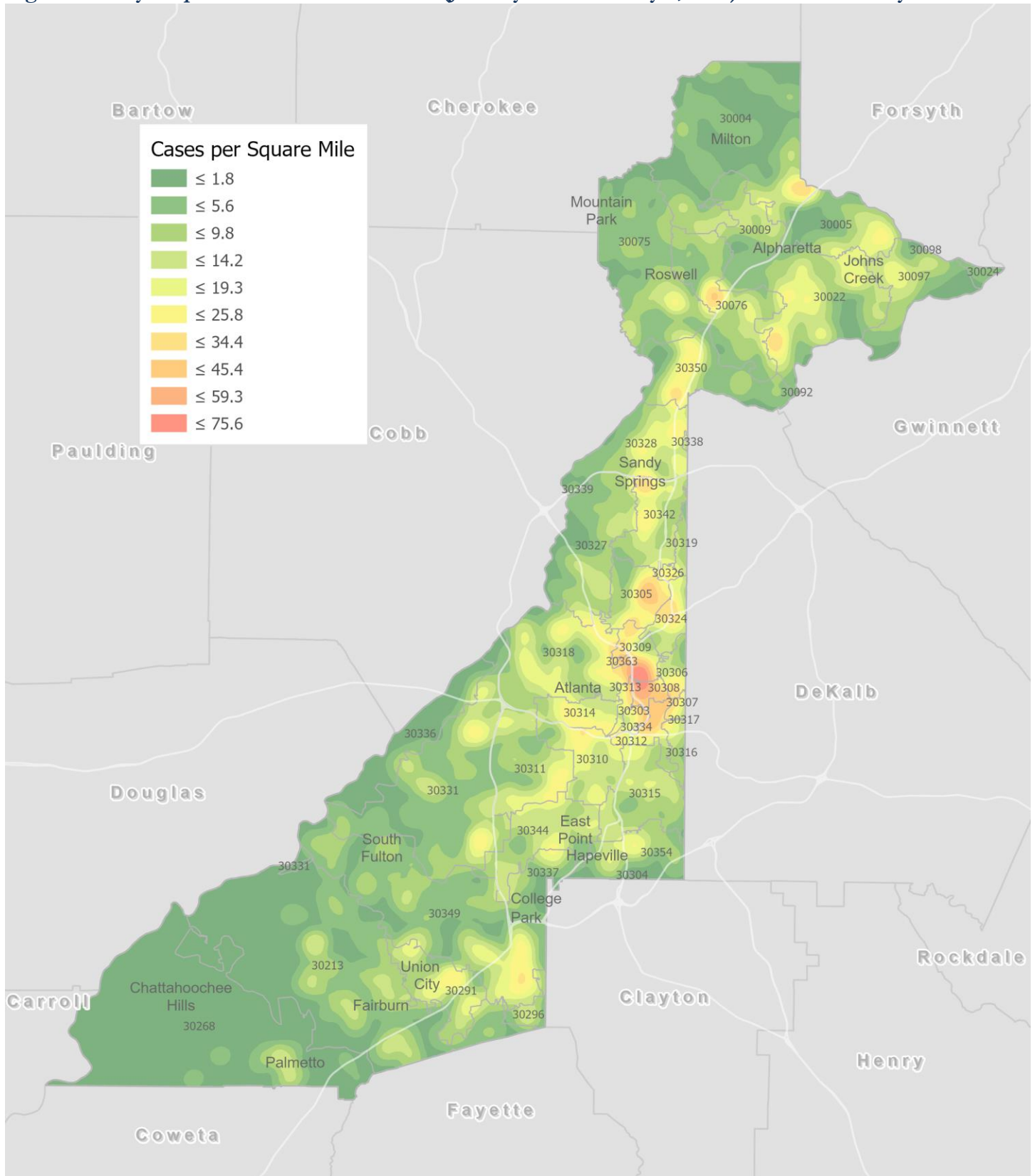
<sup>1</sup>**New cases:** Cases diagnosed in most recent 14 days (based on reported dates of positive sample collection). To allow for lag in reporting results of new diagnoses from samples collected in the most recent week, data used for incident diagnoses analyses were moved back by one week. <sup>2</sup>**% change:** These reflect the percentage increase or decrease in new diagnoses between the 14 days preceding the most recent 7 days and the 14 days preceding that. <sup>3</sup>**(Incidence) Rate:** Rate of new diagnoses in the last 14 day period preceding the immediate past week. **\*\*Data cleaning** (either during case interviews or address geo-coding) may lead to reassignment of few cases from one territory to another based on their corrected addresses. These may appear as “decreases” when compared to the previous counts. These do not reflect errors in the data collection or analysis process but only reflect the minor day-to-day fluctuations in case counts that arise in an evolving public health database like COVID’s. <sup>4</sup>**Incidence rate is skewed high due to small population. Note: All data reported are preliminary and subject to change.**

Fig. 8. Incidence Rates by Fulton City for Recent 14-day Reporting Period



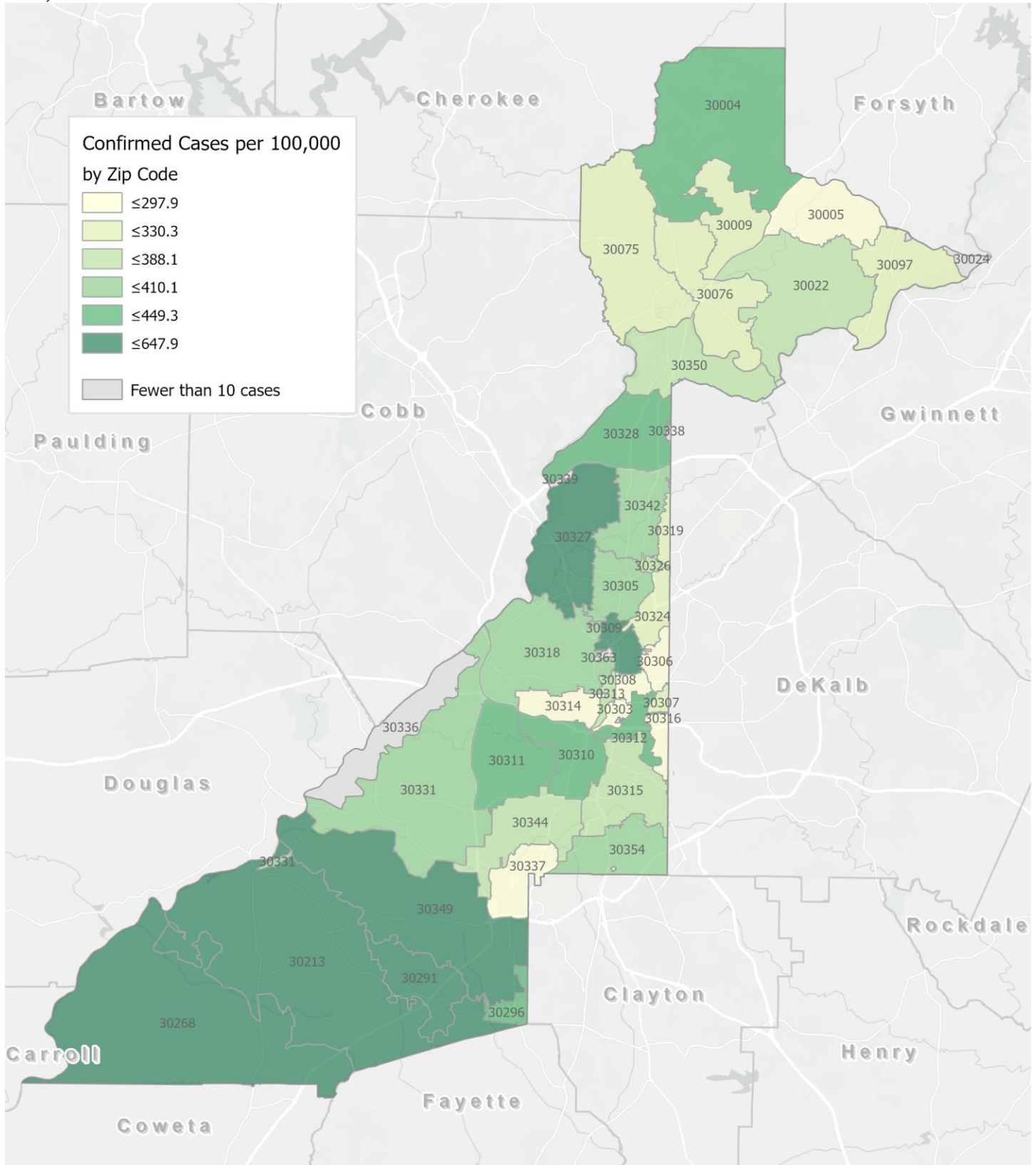
\*Rates shown are per 100,000 persons | All data shown are preliminary and are subject to change as testing results get updated.

Fig. 9. Density Map – New COVID-19 Cases (January 23 – February 5, 2021) in Fulton County



**New COVID-19 cases:** Cases diagnosed in most recent 14 days (based on reported dates of positive sample collection). To allow for lag in reporting results of positive cases from samples collected in the immediate past 7 days, data used for incident diagnoses analyses are moved back by one week. Map reflects new COVID-19 cases diagnosed between Jan 23<sup>rd</sup> and Feb 5<sup>th</sup>, 2021 across Fulton County, excluding LTCF cases.

Fig. 10. New COVID-19 Diagnoses Rates (per 100,000 population) by Zip Code (January 23 – February 5, 2021)



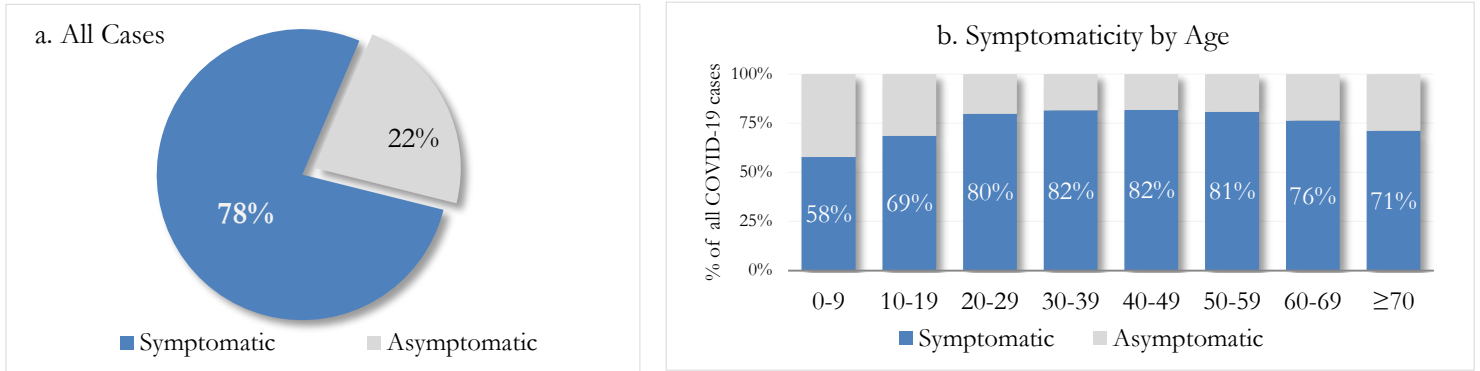
\*Rates shown are per 100,000 populations.

**New COVID-19 cases:** Cases diagnosed in most recent 14 days (based on reported dates of positive sample collection). To allow for lag in reporting results of positive cases from samples collected in the immediate past 7 days, data used for incident diagnoses analyses are moved back by one week. Data used excludes outbreak-related cases at long-term care facilities and map shown reflects only the new non-LTCF cases diagnosed between the dates shown in map title. See page 12 for zip code break down table.

## REPORTING SYMPTOMS AMONG PERSONS WITH COVID-19 IN FULTON

People with COVID-19 have reported a wide range of symptoms ranging from mild symptoms to severe illness. Symptoms may appear 2-14 days after exposure to the virus. Symptoms reported include: cough, shortness of breath/difficulty breathing, fever, chills, muscle pain, headache, sore throat, congestion, nausea or vomiting, diarrhea, or new loss of taste or smell – Centers for Disease Control and Prevention (CDC) – Centers for Disease Control and Prevention (CDC) <https://www.cdc.gov/coronavirus/2019-ncov/symptoms-testing/symptoms.html>

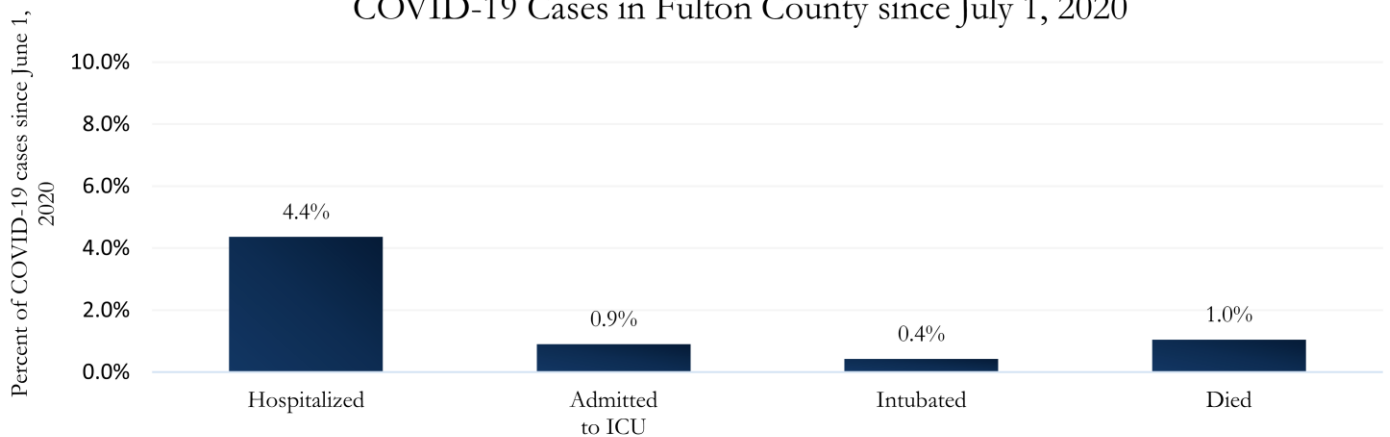
Fig. 11a & b. Total Proportion Reporting Symptoms in Fulton County



\*\*\*COVID-19 cases who have been case interviewed or had medical charts reviewed as of 2/11/21 only. n = 39,650\*\*\*

## COVID-19 HOSPITALIZATIONS, ICU ADMISSIONS AND DEATHS IN FULTON

Fig. 8. Hospitalizations, ICU Admissions, Intubations, and Deaths among COVID-19 Cases in Fulton County since July 1, 2020





## DEMOGRAPHIC DISTRIBUTIONS – COVID-19 CASES AND DEATHS

### A. Distribution of COVID-19 cases by gender, age, and race in Fulton County by Fulton Region in the past 28 days (1/9-2/5)

	North Fulton Cities <sup>1</sup> Count (%)	Atlanta Count (%)	South Fulton Cities <sup>2</sup> Count (%)	Unknown City Count (%)	All Fulton Count (%)
<b>Total COVID-19 cases</b>	<b>4092</b>	<b>4622</b>	<b>2355</b>	<b>166</b>	<b>11235</b>
<b>Gender:</b> Female	2164 (53%)	2405 (52%)	1346 (57%)	79 (48%)	5994 (53%)
Male	1895 (46%)	2192 (47%)	997 (42%)	83 (50%)	5167 (46%)
Unknown*	33 (1%)	25 (1%)	12 (1%)	<10	74 (1%)
<b>Age:</b> 0-9	228 (6%)	188 (4%)	100 (4%)	<10	523 (5%)
10-19	566 (14%)	365 (8%)	254 (11%)	21 (13%)	1206 (11%)
20-29	691 (17%)	1074 (23%)	349 (15%)	24 (14%)	2138 (19%)
30-39	606 (15%)	990 (21%)	432 (18%)	32 (19%)	2060 (18%)
40-49	679 (17%)	650 (14%)	414 (18%)	23 (14%)	1766 (16%)
50-59	642 (16%)	614 (13%)	392 (17%)	31 (19%)	1679 (15%)
60-69	346 (8%)	392 (8%)	235 (10%)	16 (10%)	989 (9%)
≥70	333 (8%)	342 (7%)	174 (7%)	12 (7%)	861 (8%)
Unknown*	<10	<10	<10	<10	13 (<1%)
<b>Race:</b> Asian, NH	325 (8%)	86 (2%)	18 (1%)	<10	434 (4%)
Black, NH	426 (10%)	1962 (42%)	1546 (66%)	44 (27%)	3978 (35%)
White, NH	1582 (39%)	997 (22%)	124 (5%)	35 (21%)	2738 (24%)
Hispanic	546 (13%)	209 (5%)	163 (7%)	18 (11%)	936 (8%)
Other, NH	469 (11%)	356 (8%)	91 (4%)	11 (7%)	927 (8%)
Unknown*	744 (18%)	1012 (22%)	413 (18%)	53 (32%)	2222 (20%)

\*Unknown includes cases not yet interviewed. 28 days delayed by seven to account for lag in reporting lab results. <sup>1</sup>Includes all Fulton County cities north of Atlanta (Alpharetta, Johns Creek, Milton, Mountain Park, Roswell, Sandy Springs). <sup>2</sup>Includes all cities south of Atlanta (Chattahoochee Hills, College Park, East Point, Fairburn, Hapeville, Palmetto, South Fulton, and Union City)

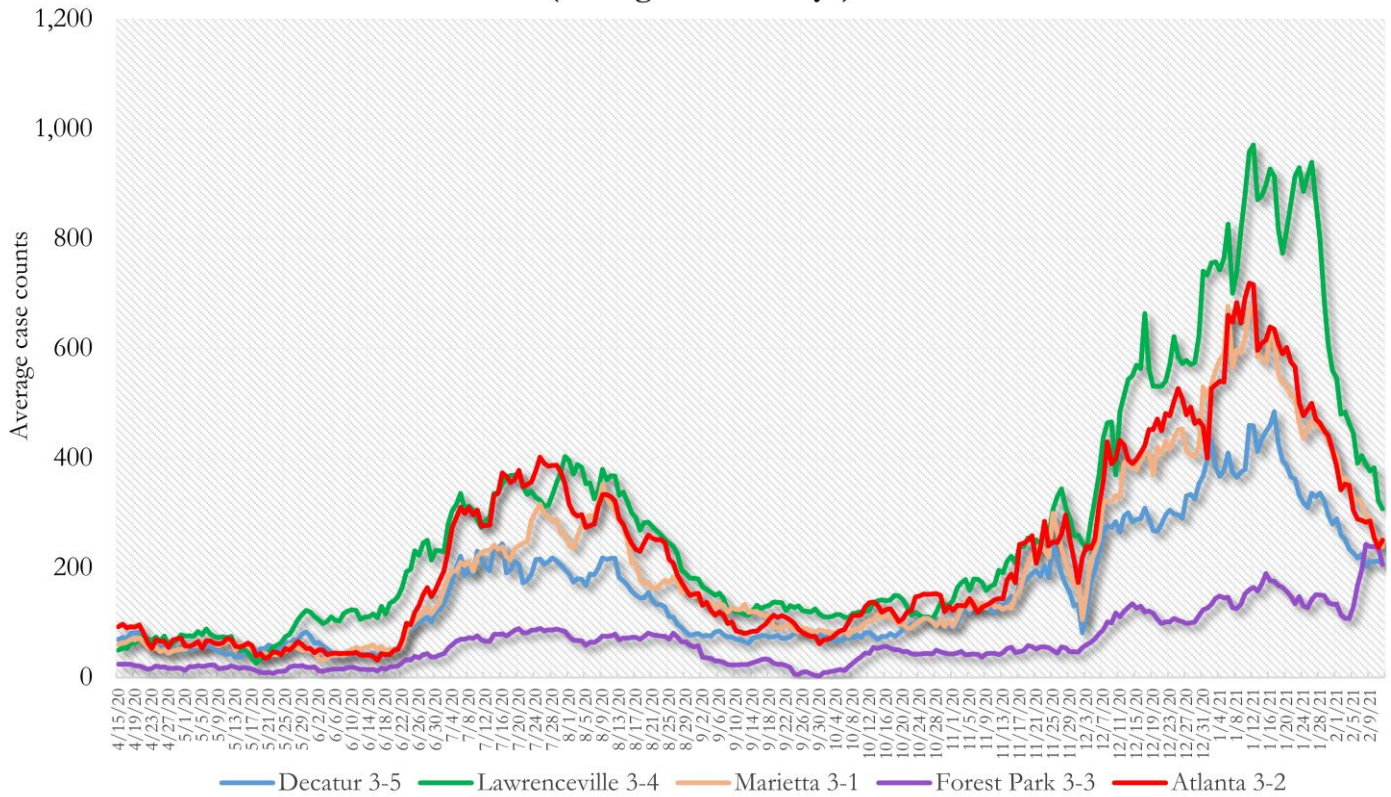
### B. Distribution of COVID-19 deaths by gender, age, and race in Fulton County in the past 28 days (1/9 - 2/5)

	Count of New Deaths	% of New Deaths
<b>Total COVID-19 deaths</b>	<b>41</b>	
<b>Gender:</b> Female	22	54%
Male	19	46%
Unknown	<10	<1%
<b>Age:</b> ≤ 29	<10	<1%
30-39	<10	<1%
40-49	<10	5%
50-59	<10	2%
60-69	<10	20%
≥70	30	73%
Unknown	<10	<1%
<b>Race:</b> Asian, NH	<10	2%
Black, NH	22	54%
White, NH	17	41%
Hispanic	<10	2%
Other, NH	<10	<1%
Unknown	<10	<1%

**Note:** All data reported are preliminary and subject to change. This table includes data on confirmed COVID-19 deaths and is subject to change as GA DPH completes cause of death confirmation processes. Data are 28 days delayed by seven to account for lag in reporting of deaths.

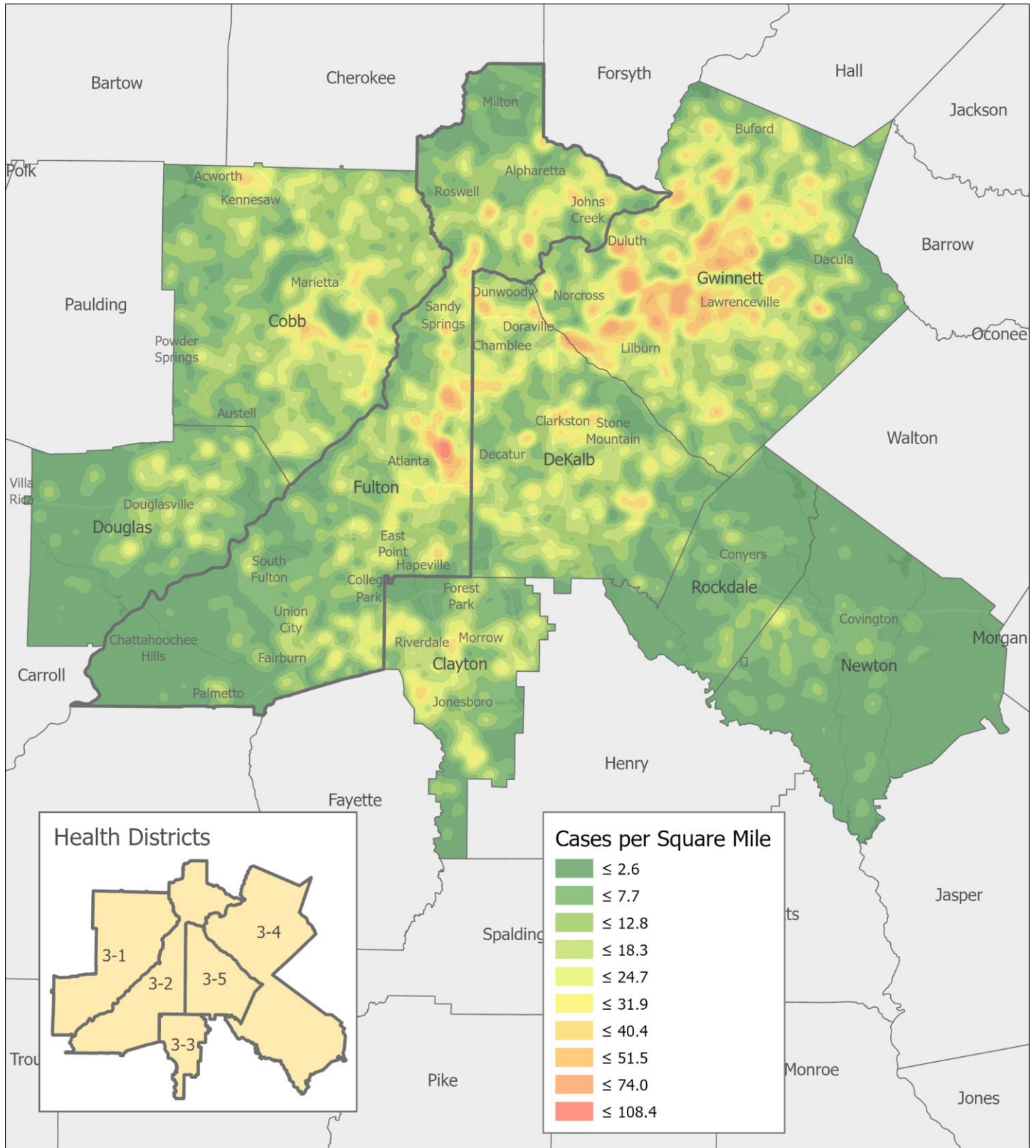
**COVID-19 CASE TRENDS IN FULTON AND SURROUNDING DISTRICTS**

**Fig. 13. Daily Case Counts for Atlanta Metro Districts  
(Averaged over 7 days)**



\*Graph shows the average number of cases calculated from the daily cumulative case counts in the metro Atlanta districts. Increases in daily cumulative case counts may include cases diagnosed earlier during the pandemic but were only recently reported to the state as cases diagnosed belonging to these districts.

Fig. 14. COVID-19 Cases in Fulton County and Surrounding Districts (January 23 – February 5, 2021)



## COVID-19 NEW CASE<sup>1</sup> COUNTS BY ZIP CODE

Zip Code	Recent 14-day reporting period (1/23 – 2/5)	Previous 14-day reporting period (1/9 – 1/22)	% Change between reporting periods <sup>2</sup>
<b>All Fulton</b>	<b>4709</b>	<b>7171</b>	<b>↓ 34.3%</b>
30004	218	337	↓ 35.3%
30005	107	219	↓ 51.1%
30009	62	146	↓ 57.5%
30022	297	510	↓ 41.8%
30023	<10	<10	-
30024	<10	15	↓ 46.7%
30075	172	284	↓ 39.4%
30076	162	379	↓ 57.3%
30080	0	0	-
30097	106	136	↓ 22.1%
30098	0	0	-
30135	0	0	-
30138	0	0	-
30139	0	0	-
30213	207	277	↓ 25.3%
30268	47	83	↓ 43.4%
30291	152	211	↓ 28.0%
30296	26	48	↓ 45.8%
30301	<10	0	-
30303	20	46	↓ 56.5%
30305	129	249	↓ 48.2%
30306	46	88	↓ 47.7%
30307	23	25	↓ 8.0%
30308	72	110	↓ 34.5%
30309	146	194	↓ 24.7%
30310	147	163	↓ 9.8%
30311	165	250	↓ 34.0%
30312	122	185	↓ 34.1%
30313	47	42	↑ 11.9%
30314	83	106	↓ 21.7%
30315	140	199	↓ 29.6%
30316	35	83	↓ 57.8%
30318	305	381	↓ 19.9%
30319	23	38	↓ 39.5%
30321	<10	<10	-
30324	92	120	↓ 23.3%
30326	21	52	↓ 59.6%
30327	134	203	↓ 34.0%
30328	172	258	↓ 33.3%
30331	280	351	↓ 20.2%
30334	0	<10	↓ 100.0%
30336	<10	13	↓ 53.8%
30337	45	57	↓ 21.1%

Zip Code	Recent 14-day reporting period (1/23 – 2/5)	Previous 14-day reporting period (1/9 – 1/22)	% Change between reporting periods
30338	<10	<10	-
30339	<10	<10	-
30340	0	0	-
30341	0	0	-
30342	170	271	↓ 37.3%
30344	137	206	↓ 33.5%
30345	0	<10	↓ 100.0%
30349	312	396	↓ 21.2%
30350	148	239	↓ 38.1%
30354	71	109	↓ 34.9%
30358	0	<10	↓ 100.0%
30363	11	20	↓ 45.0%
30374	0	<10	↓ 100.0%
30606	0	0	-
31131	0	0	-
31150	0	<10	↓ 100.0%
Unknown	29	47	-

<sup>1</sup>**New cases:** Cases diagnosed in most recent 28 days (based on reported dates of positive sample collection). To allow for lag in reporting results of new diagnoses from samples collected in the most recent week, data used for incident diagnoses analyses were moved back by one week. <sup>2</sup>**Percent change:** These reflect the percentage increase or decrease of new diagnoses between the 14 days preceding the past 7 days and the 14 days preceding that. Changes in ZIP codes with less than 10 cases in both 2 week intervals are not reported

The following data are updated every two weeks.

Last updated 2/2/2021

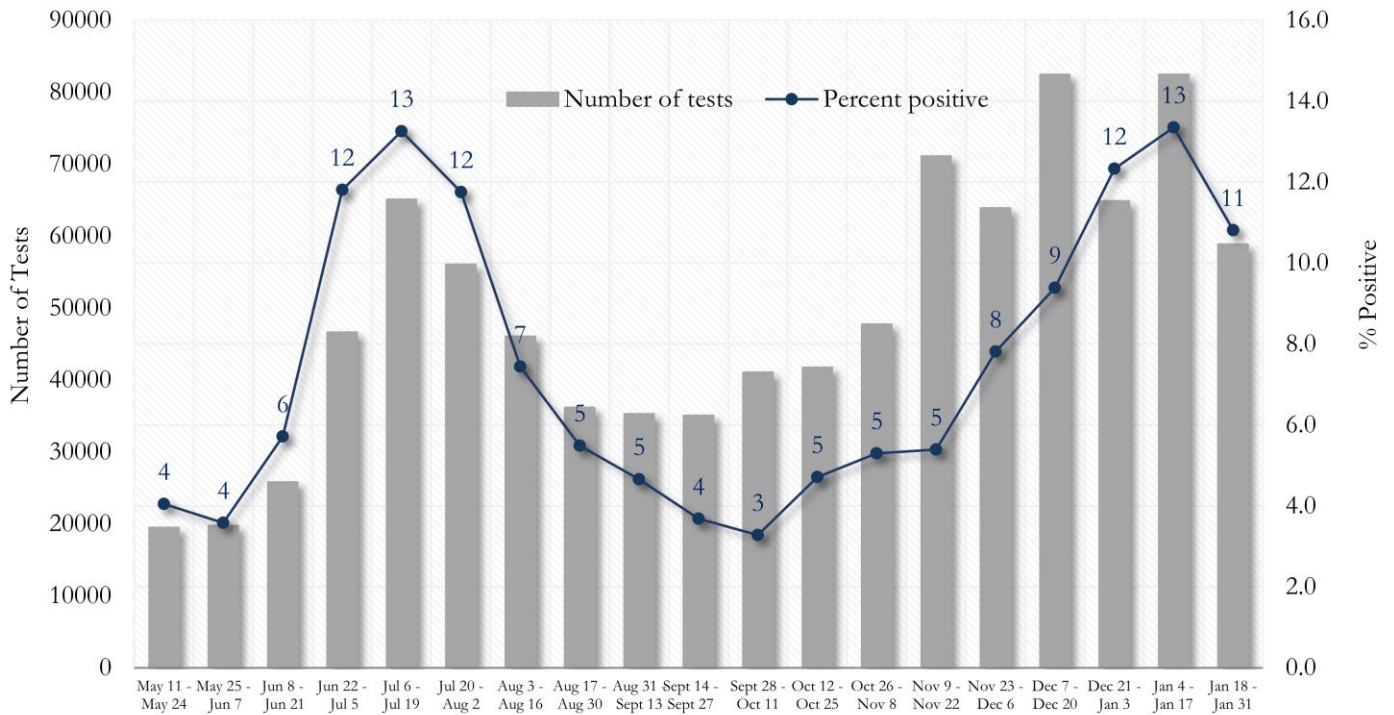
These data are generated using a fixed start date and counted forward in 14-day intervals. Using these time blocks allows for the stability in trends over time and accounts for delays in reporting lab results.

In the interest of keeping the reports concise and useful, the cumulative counts updated on a monthly basis can now be viewed between updates at the Fulton County Board of Health website [here](#).

Please visit the Georgia Department of Public Health Daily Status Report [here](#) for cumulative daily counts.

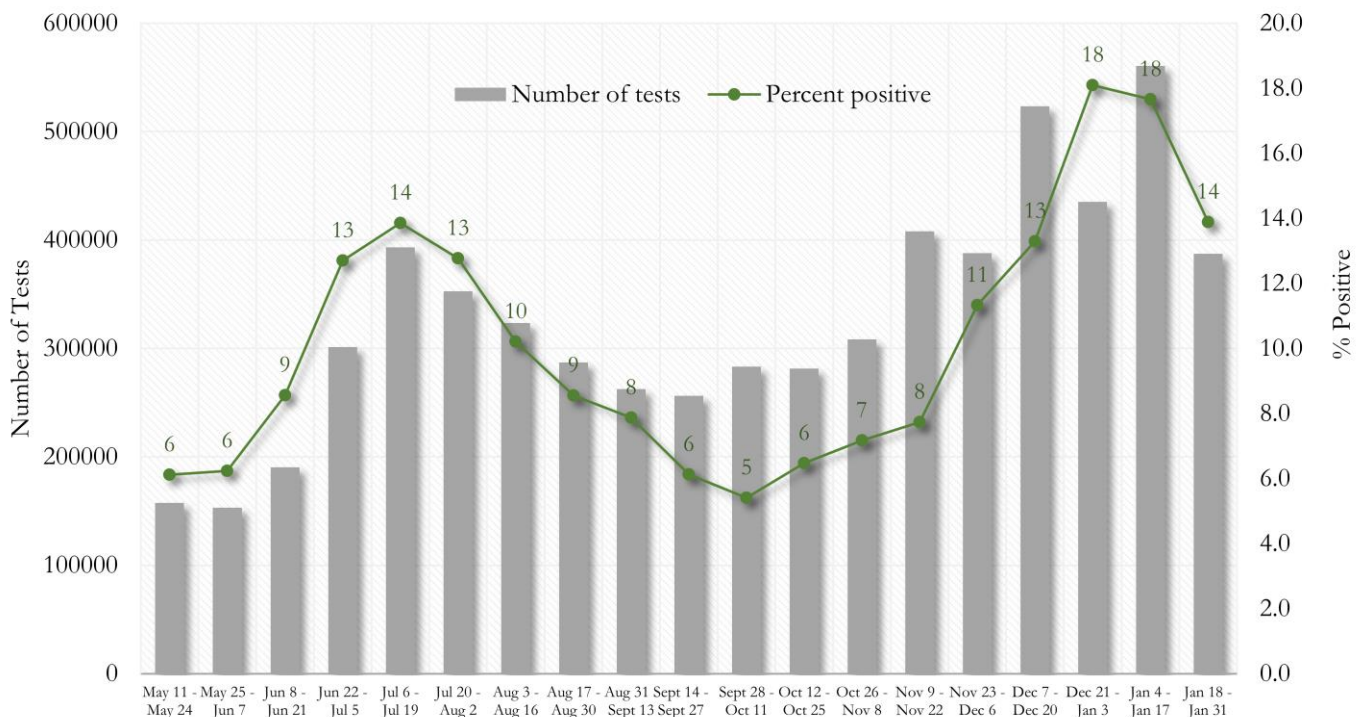
**COVID-19 TESTING AND POSITIVITY IN FULTON COUNTY AND GEORGIA**

**Fig. 15. Trends in Positive COVID-19 Tests in Fulton County by 14-day Periods**



\*Data on Polymerase Chain Reaction (PCR) tests only included.

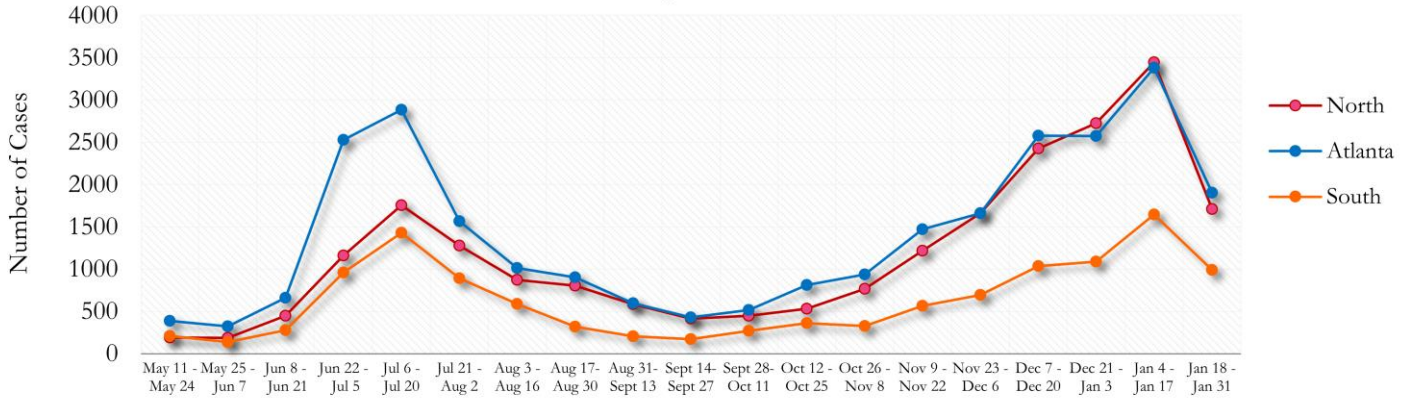
**Fig. 16. Trends in Positive COVID-19 Tests in Georgia by 14-day Periods**



\*Data on Polymerase Chain Reaction (PCR) tests only included.

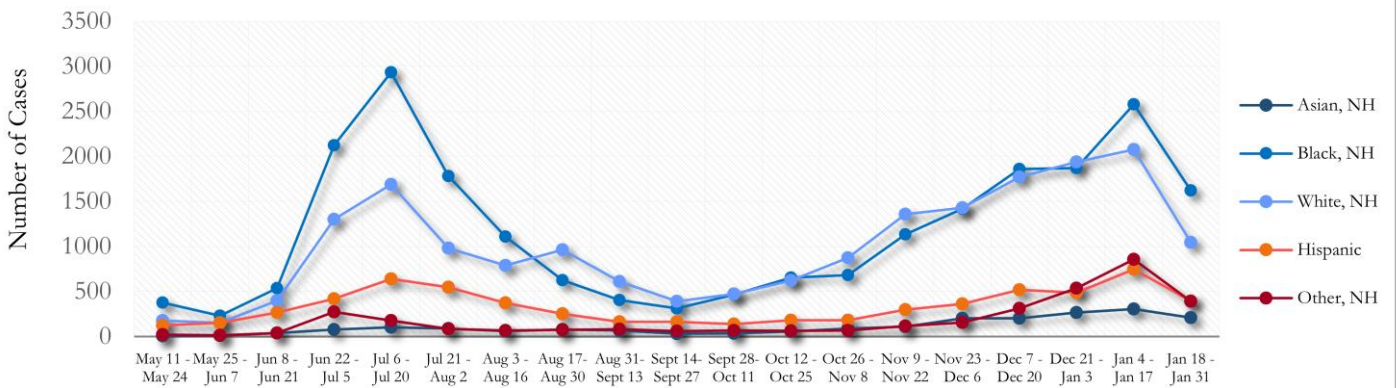
**TRENDS IN COVID-19 CASES AMONG DEMOGRAPHIC GROUPS (14 DAY PERIODS)**

**Fig. 17. Trends in Geographic distribution of COVID-19 Cases in Fulton County by 14-day periods**

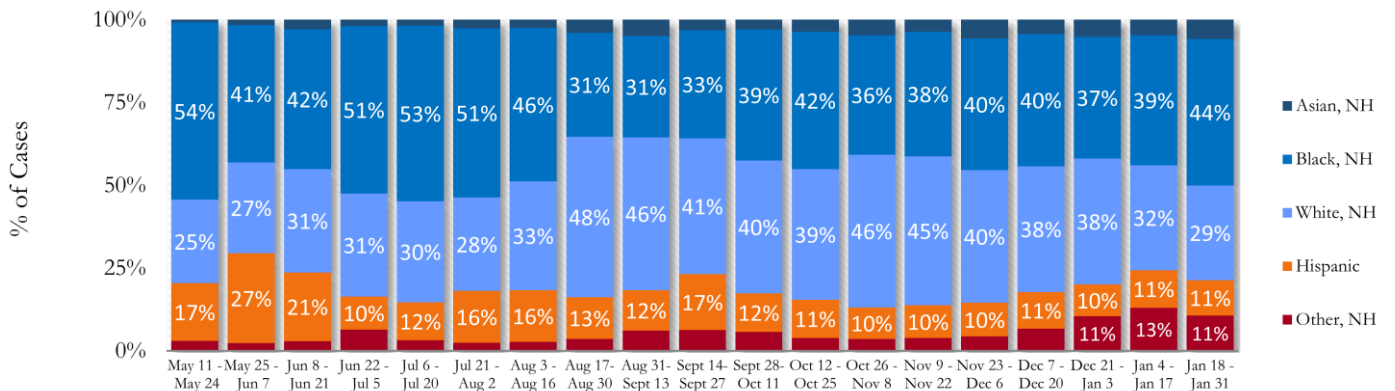


In the past two weeks, the city of Atlanta and the Northern region have accounted for almost equal amounts of new cases.  
 \*North - Includes all Fulton cities north of Atlanta (Alpharetta, Johns Creek, Milton, Mountain Park, Roswell, Sandy Springs)  
 \*South - Includes all Fulton cities south of Atlanta (Chattahoochee Hills, College Park, East Point, Fairburn, Hapeville, Palmetto, South Fulton, and Union City)

**Fig. 18. Trends in Racial Distribution of COVID-19 Cases in Fulton County by 14-day periods**

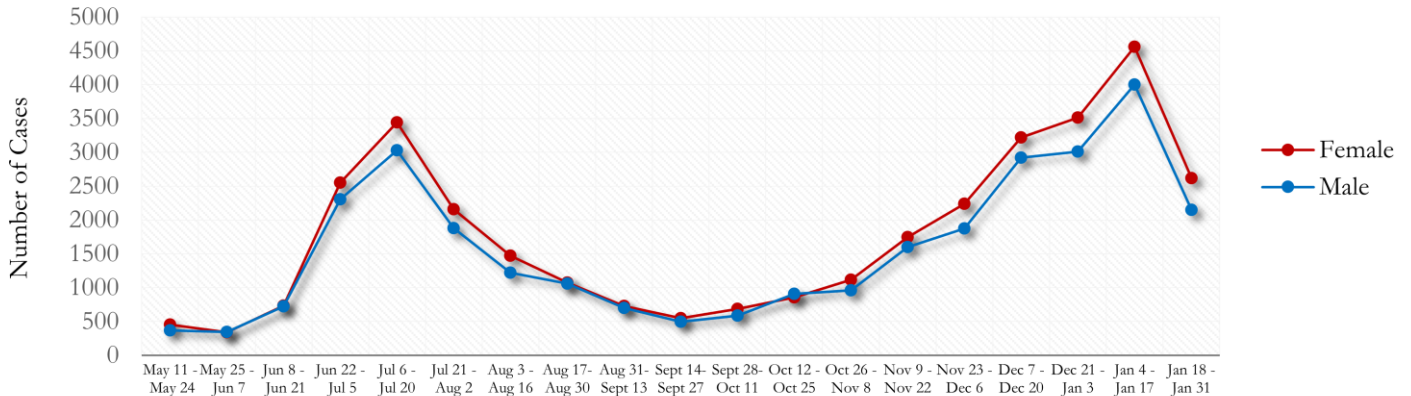


**Fig. 19. Racial Distribution of COVID-19 Cases in Fulton County by 14-day periods**

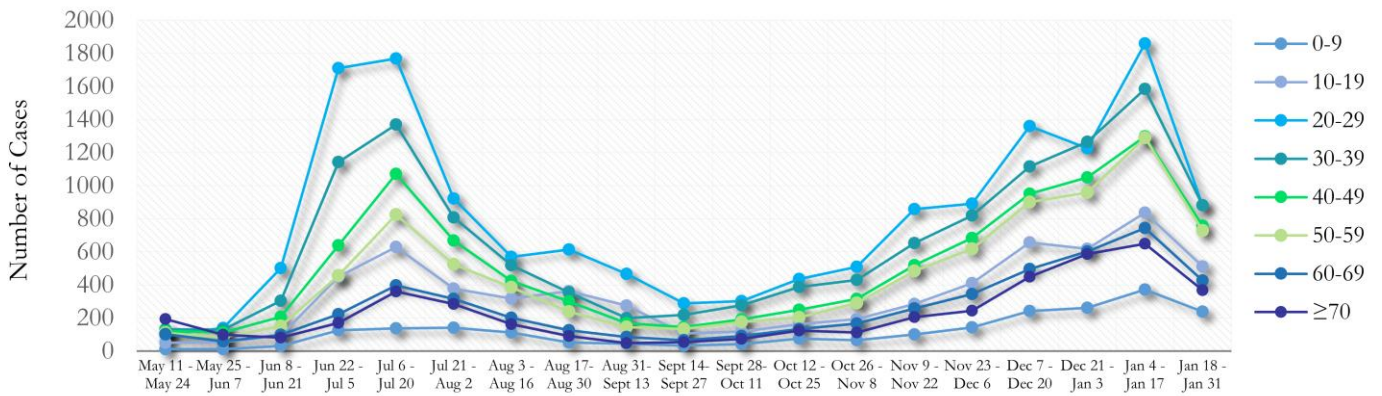


About 17% of all Fulton County COVID cases are missing data on patient race and ethnicity and in the past two weeks, about 24% of cases are missing this data.

**Fig. 20. Trends in Gender Distribution of COVID-19 Cases in Fulton County by 14-day periods**

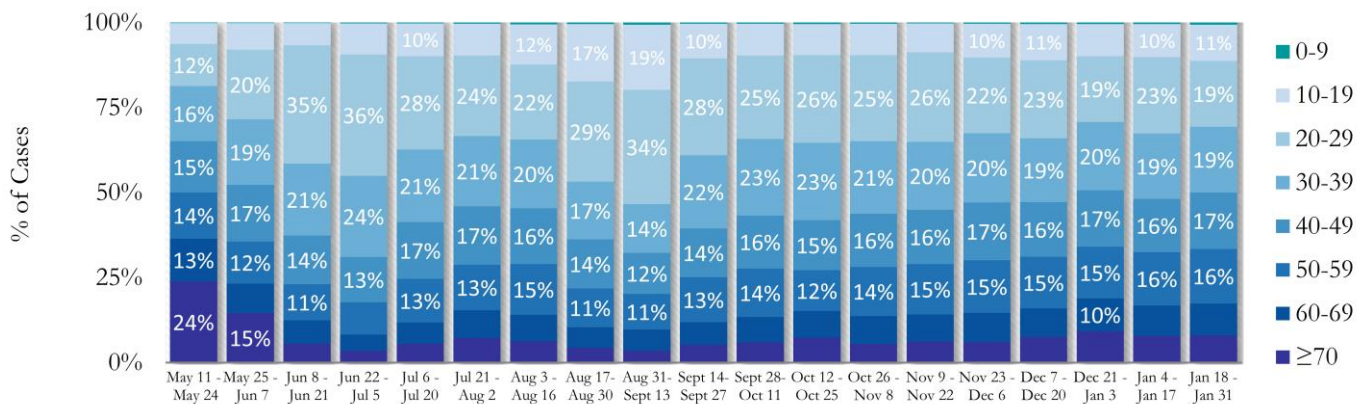


**Fig. 21. Trends in Age Distribution of COVID-19 Cases in Fulton County by 14-day periods**



In the most recent two weeks, 20-29 year olds and 30-39 year olds accounted for the majority of new cases.

**Fig. 22. Age Distribution of COVID-19 Cases in Fulton County by 14-day periods**

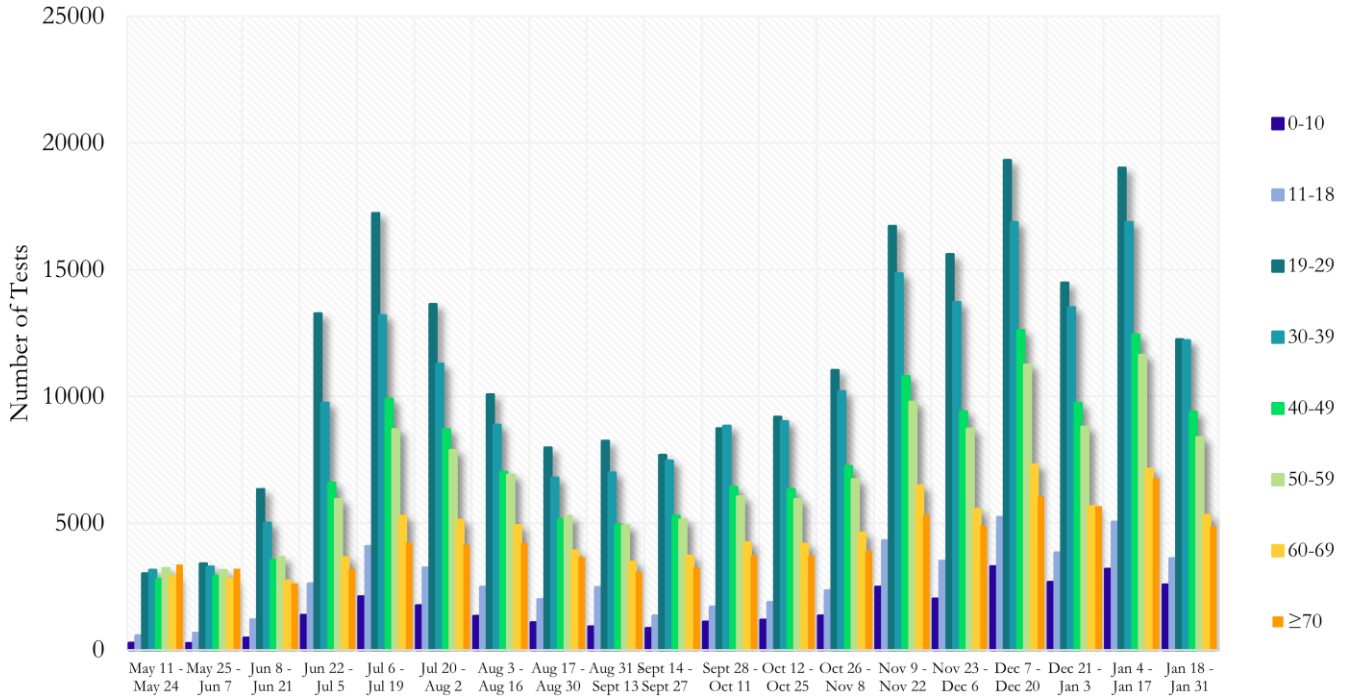


Value labels under 10% are not shown.



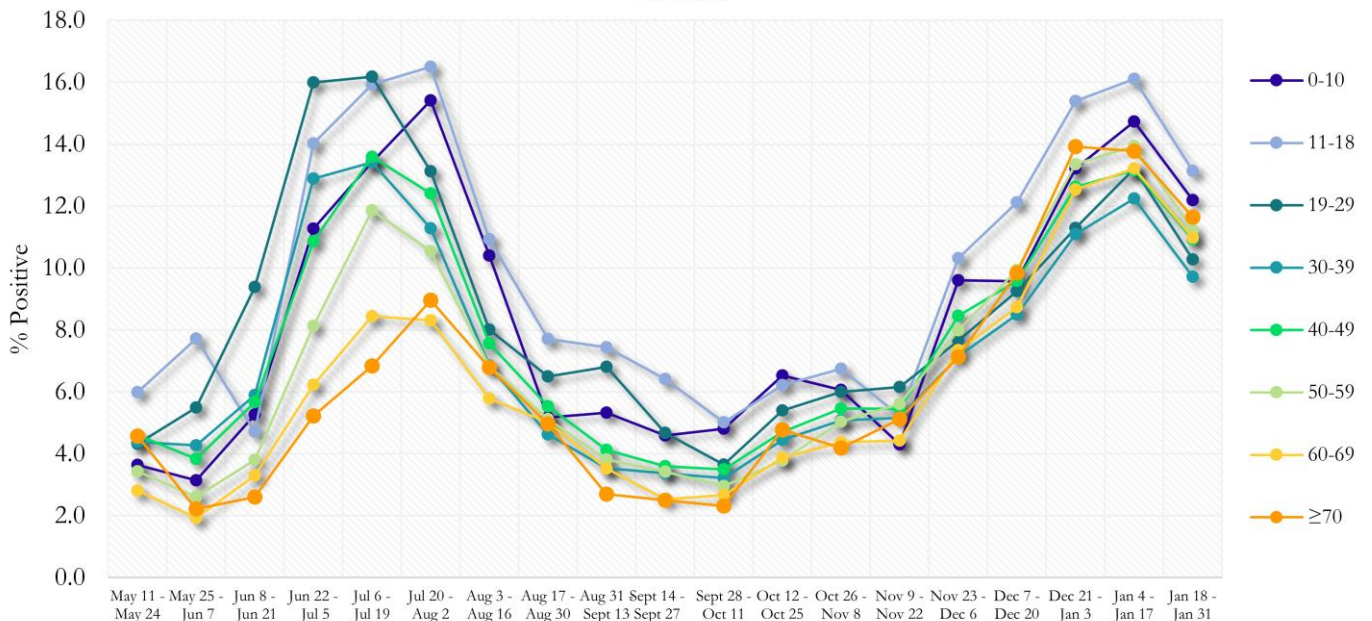
**COVID-19 TESTING AND POSITIVITY IN FULTON COUNTY BY AGE AND RACE**

**Fig. 23. COVID-19 Tests by Age in Fulton County by 14-day Periods**



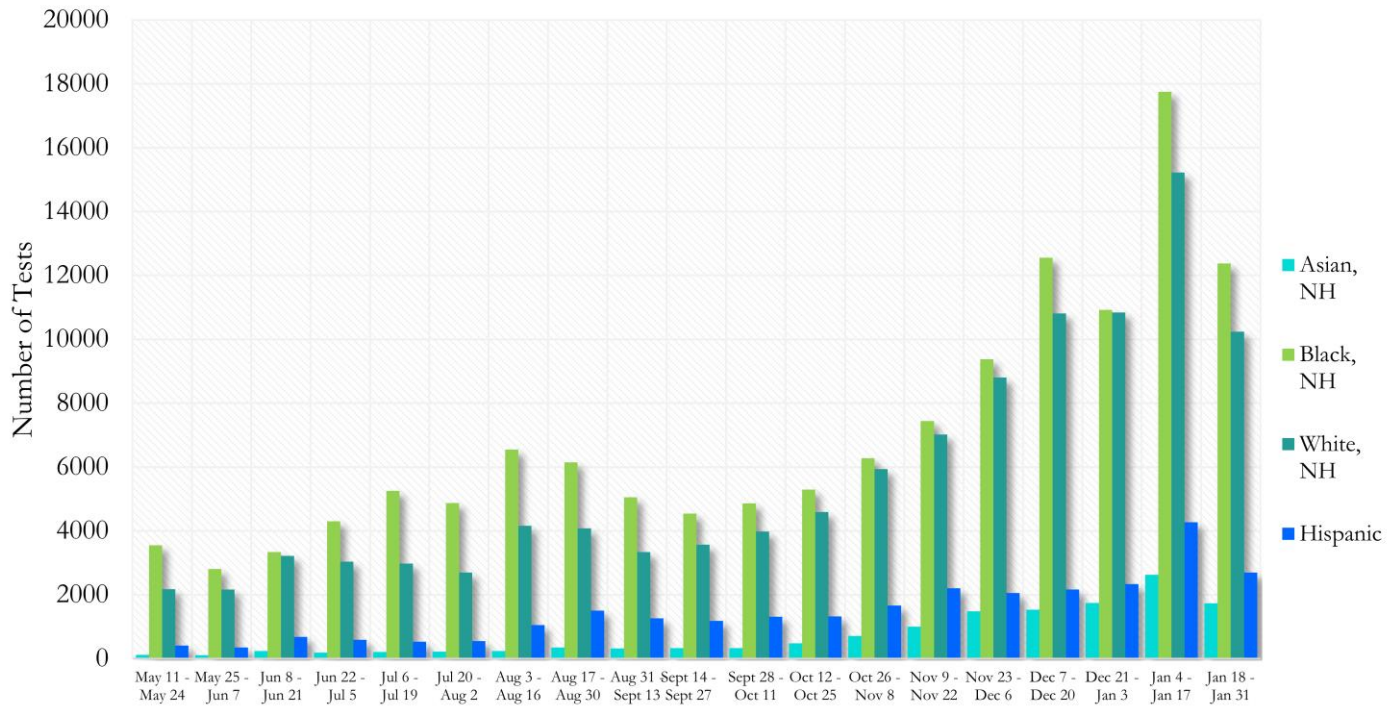
\*Data on Polymerase Chain Reaction (PCR) tests only included.

**Fig. 24. Percent Positive COVID-19 Tests by Age Group in Fulton County by 14-day Periods**



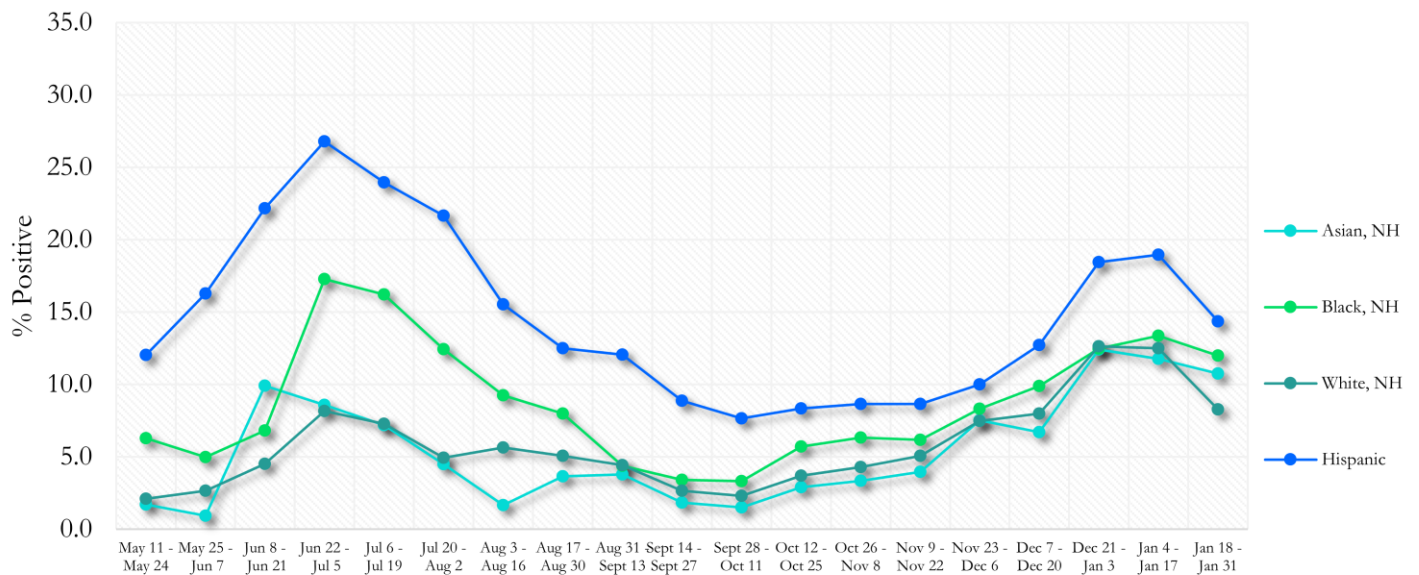
\*Data on Polymerase Chain Reaction (PCR) tests only included.

**Fig. 25. COVID-19 Tests by Race and Ethnicity in Fulton County by 14-day Periods**



\*Data on Polymerase Chain Reaction (PCR) tests only included. For the recent two weeks, 46% of test results did not have race/ethnicity information.

**Fig. 26. Percent Positive COVID-19 Tests by Race and Ethnicity in Fulton County by 14-day Periods**

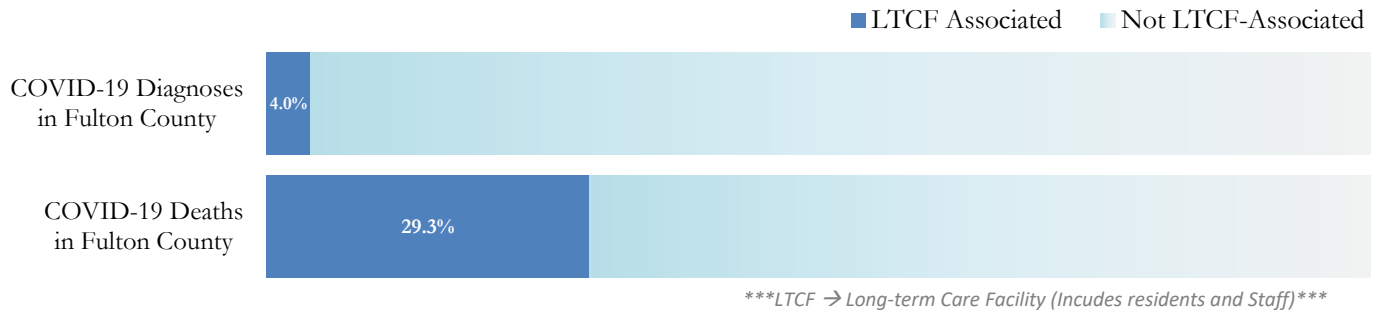


\*Data on Polymerase Chain Reaction (PCR) tests only included.

## COVID-19 IN LONG-TERM CARE FACILITIES IN FULTON COUNTY

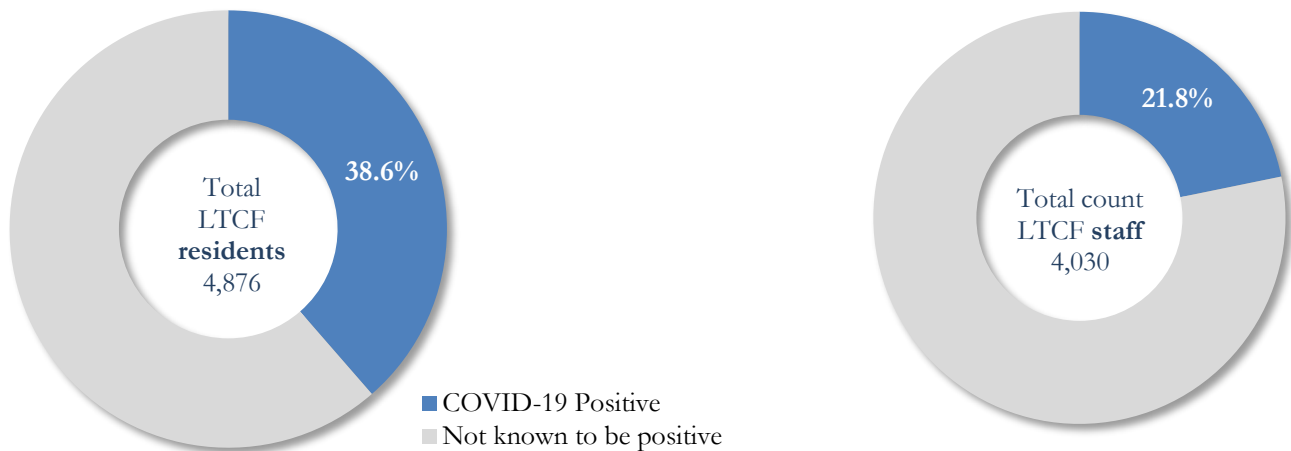
Older persons (aged 65 years and older) and persons who live in nursing homes or other long-term care facilities seem to be at higher risk for developing more serious complications from COVID-19. Extra precautions are recommended for individuals within this risk groups – Centers for Disease Control and Prevention (CDC 2020) <https://www.cdc.gov/coronavirus/2019-ncov/need-extra-precautions/people-at-higher-risk.html>

Fig. 27. COVID-19 Diagnoses and Deaths in Fulton County Associated with Long-Term Care Facilities



## COVID-19 POSITIVITY:

Fig. 28. COVID-19 Positivity at 64 reporting Long-Term Care Facilities (LTCF) in Fulton County



COVID-19 Cases, Hospitalizations, and Deaths among 64 reporting Long-Term Care Facilities in Fulton County

	LTCF Residents (n=4,876)			LTCF Staff (n=4,030)		
	Cases	Hospitalizations	Deaths	Cases	Hospitalizations	Deaths
<b>Average</b> (count per fac.) <sup>1</sup>	29	5	4	14	1	<0.1
<b>Median</b> (count per fac.) <sup>1</sup>	12	3	1	9	0	0
<b>Lowest counts</b>	0	0	0	0	0	0
<b>Highest counts</b>	143	48	30	70	8	2
<b>Total Count</b>	<b>1882 (38.6%)<sup>a</sup></b>	<b>337 (17.9%)<sup>b</sup></b>	<b>260 (13.8%)<sup>b</sup></b>	<b>878 (21.8%)<sup>a</sup></b>	<b>33 (3.8%)<sup>b</sup></b>	<b>5 (&lt;1.0%)<sup>b</sup></b>

<sup>a</sup> Percentage shown reflects proportion of total residents/staff tested who were positive (i.e. COVID-19 Positivity). | <sup>b</sup> Percentages shown are proportions of persons residents/staff diagnosed with COVID-19 who were hospitalized or died after diagnoses.