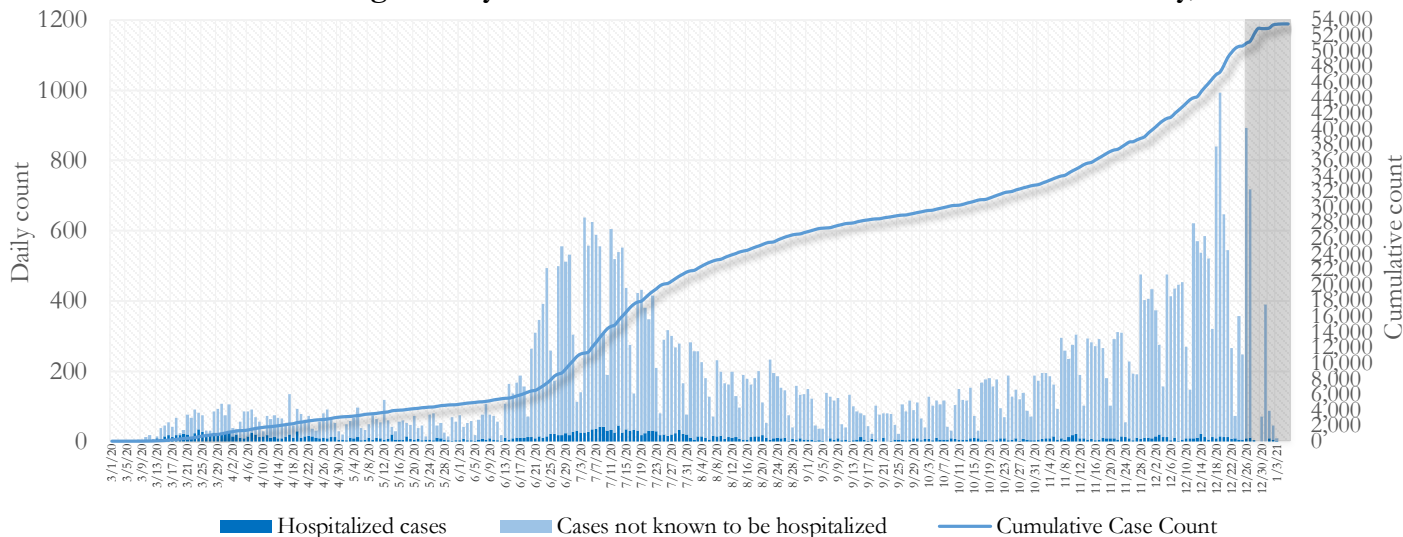


## SUMMARY

- As of January 6, 2021, Fulton County has recorded **53,643 cases of the 2019 novel coronavirus (COVID-19)** and **746 confirmed COVID-19 deaths**. 108 deaths are currently being reviewed by GA DPH to confirm cause of death.
- Of the **7,158 new cases** between December 17 and December 30, the central portion of the county (Atlanta) accounted for 39% while the northern and southern parts accounted for 41% and 17% respectively.
- By city, new COVID-19 case rates range from 389.1 per 100,000 persons (College Park) to 1120.0 per 100,000 persons (Mountain Park). **[Fulton County Diagnoses Rates (per 100,000 persons): Cumulative – 4880.2; Incidence –651.2]**. See map showing incidence case rate by ZIP code on Pg.17.
- Among all persons diagnosed with COVID-19 in Fulton County since July 1, **5.2% required hospitalization and 1.0% died**.
- Of all testing done in Fulton County between December 7 and December 20, **the percent positivity rate was 9.4%**.

**Fig 1. Daily and Cumulative COVID-19 cases in Fulton County, GA**



\*Counts shown reflect the number of confirmed cases as of 7:00 pm on 1/5/21 using the date of first positive sample collection. Where date of sample collection was not available or missing, the date of report creation in GA SENDSS was used instead. **Note:** Delays in data reporting may cause changes in data counts, particularly in the shaded portion. Data throughout this report are preliminary and subject to ongoing data cleaning processes, and thus are subject to change. This report includes data on confirmed PCR tests only. For data on antigen testing, see the [GA DPH County Indicator Reports here](#).

## DISTRIBUTION OF COVID-19 CASES BY REGION

**New cases:** 39% of the new COVID-19 cases in the past 2 weeks occurred in Atlanta while 41% and 17% occurred in the Northern and Southern regions of the county respectively.

Fulton Region	% Cumulative count	% New cases*
Atlanta	43.0%	39.4%
North <sup>1</sup>	33.1%	41.1%
South <sup>2</sup>	19.0%	16.5%
Unincorporated/Unknown	5.0%	3.0%

<sup>1</sup>Includes all Fulton County cities north of Atlanta (Alpharetta, Johns Creek, Milton, Mountain Park, Roswell, Sandy Springs) | <sup>2</sup>Includes all cities south of Atlanta (Chattahoochee Hills, College Park, East Point, Fairburn, Hapeville, Palmetto, South Fulton, and Union City) \***New cases:** Cases diagnosed in the past 2 weeks only (between 12/17/20 – 12/30/20).

In the recent two week reporting period (12/17-12/30), there were more new cases of COVID-19 in Fulton County than the previous two weeks (12/3-12/16).



\*Delayed a week to account for testing results turnaround time.

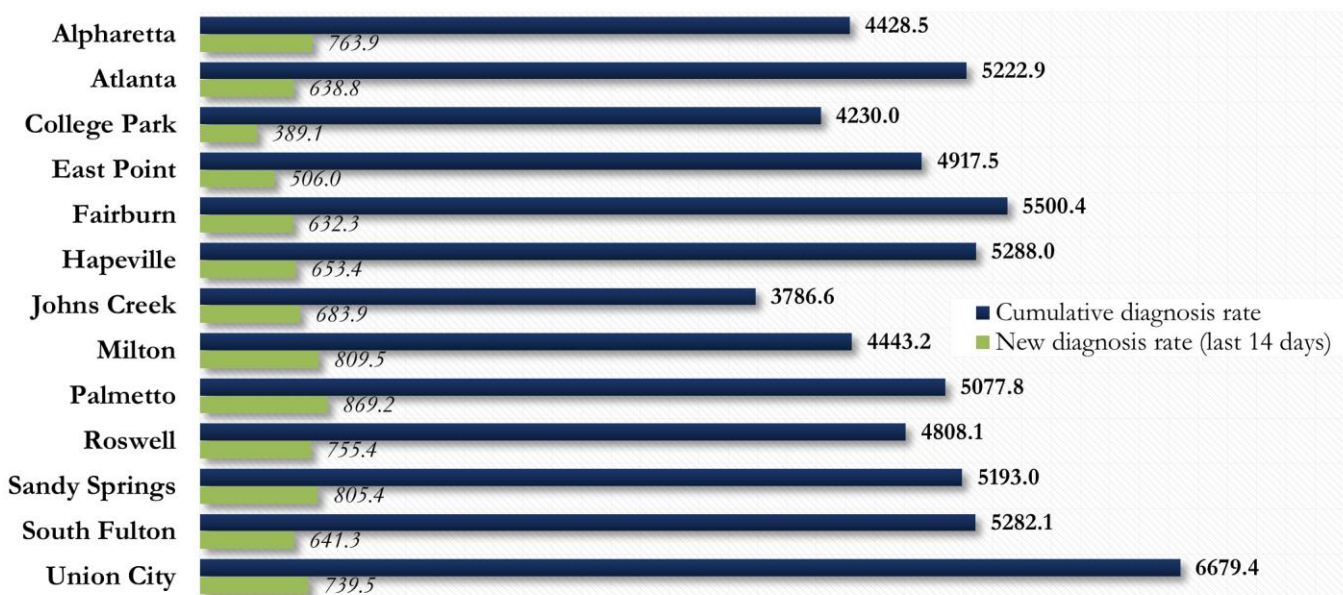
Due to a technological delay on the SendSS database, the demographic and testing data on pgs. 10-11 and 15-16 was not able to be updated today as intended.

## COVID-19 CASE COUNTS AND RATES BY CITY

	Prior (12/29/20)	Current Total (1/6/21)			New Cases (Period: 12/3/20 – 12/30/20) <sup>1</sup>			
	Count	Count	%	Cum. Rate <sup>2</sup>	Recent 14 d. (12/17–12/30)	Prior 14 d. (12/3–12/16)	% change <sup>3</sup>	Rate <sup>4</sup> (Last 14 d).
Alpharetta	2606	2864	5.3%	4428.5	494	404	↑ 22.3%	763.9
Atlanta	21486	23042	43.0%	5222.9	2818	2250	↑ 25.2%	638.8
Chattahoochee Hills	69	77	0.1%	2685.7	13	12	↑ 8.3%	453.4
College Park	567	587	1.1%	4230.0	54	46	↑ 17.4%	389.1
East Point	1617	1720	3.2%	4917.5	177	171	↑ 3.5%	506.0
Fairburn	751	809	1.5%	5500.4	93	70	↑ 32.9%	632.3
Hapeville	320	348	0.6%	5288.0	43	24	↑ 79.2%	653.4
Johns Creek	2859	3167	5.9%	3786.6	572	446	↑ 28.3%	683.9
Milton	1538	1696	3.2%	4443.2	309	191	↑ 61.8%	809.5
Mountain Park	17	19	0.0%	3040.0	<10	<10	↑ 250.0%	1120.0 <sup>5</sup>
Palmetto	207	222	0.4%	5077.8	38	19	↑ 100.0%	869.2
Roswell	4108	4532	8.4%	4808.1	712	490	↑ 45.3%	755.4
Sandy Springs	5030	5474	10.2%	5193.0	849	630	↑ 34.8%	805.4
South Fulton	4687	5024	9.4%	5282.1	610	449	↑ 35.9%	641.3
Union City	1312	1400	2.6%	6679.4	155	165	↓ 6.1%	739.5
Unknown	6468	2661	5.0%	-	206	121	-	-

<sup>1</sup>**New cases:** Cases diagnosed in most recent 28 days (based on reported dates of positive sample collection). To allow for lag in reporting results of new diagnoses from samples collected in the most recent week, data used for incident diagnoses analyses were moved back by one week. <sup>2</sup>**Cumulative diagnosis rate:** Population estimates from US Census Bureau used to calculate cumulative diagnoses rate. All rates shown are per 100,000 persons. <sup>3</sup>**% change:** These reflect the percentage increase or decrease in new diagnoses between the 14 days preceding the most recent 7 days and the 14 days preceding that. <sup>4</sup>**(Incidence) Rate:** Rate of new diagnoses in the last 14 day period preceding the immediate past week. **\*\*Data cleaning** (either during case interviews or address geo-coding) may lead to reassignment of few cases from one territory to another based on their corrected addresses. These may appear as “decreases” when compared to the previous day’s count. These do not reflect errors in the data collection or analysis process but only reflect the minor day-to-day fluctuations in case counts that arise in an evolving public health database like COVID’s. <sup>5</sup>Incidence rate is skewed high due to small population. **Note:** All data reported are preliminary and subject to change.

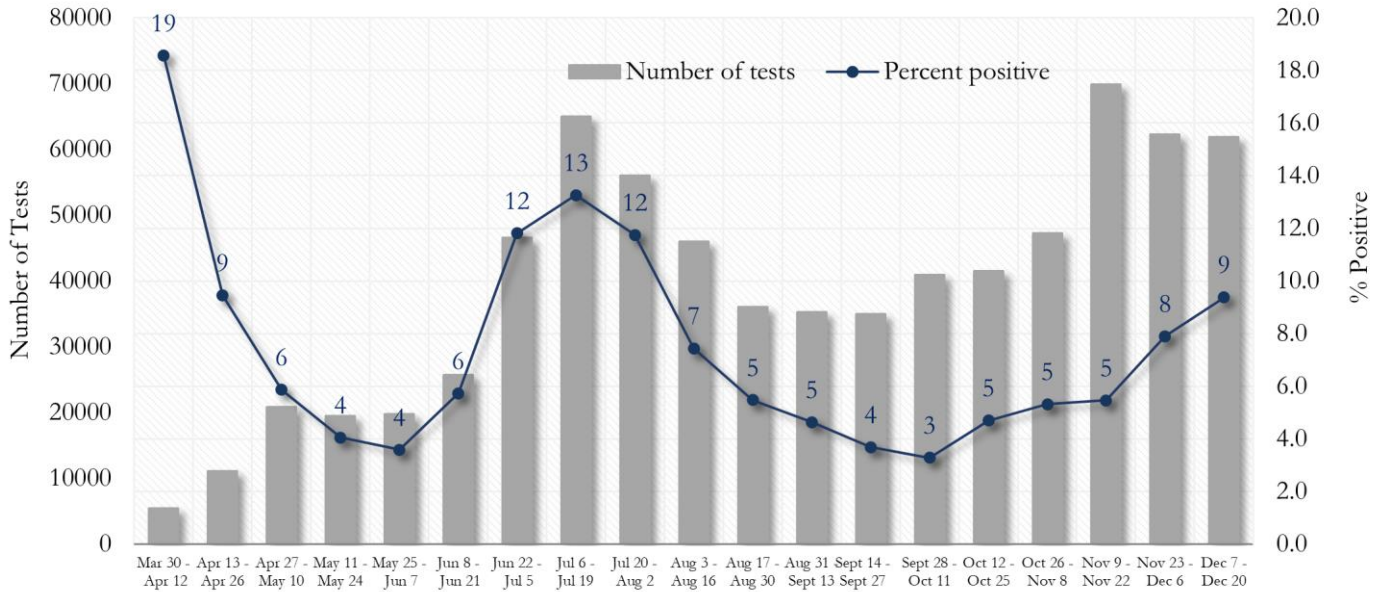
Fig. 2. Incident &amp; Cumulative Diagnoses Rates for COVID-19 by City



\*Rates shown are per 100,000 persons | **Note:** Mass testing in specific locations (e.g. long term care facilities) may cause sharp increases in the cumulative rate of COVID-19 diagnosis in those territories. All data shown are preliminary and are subject to change as testing results get updated.

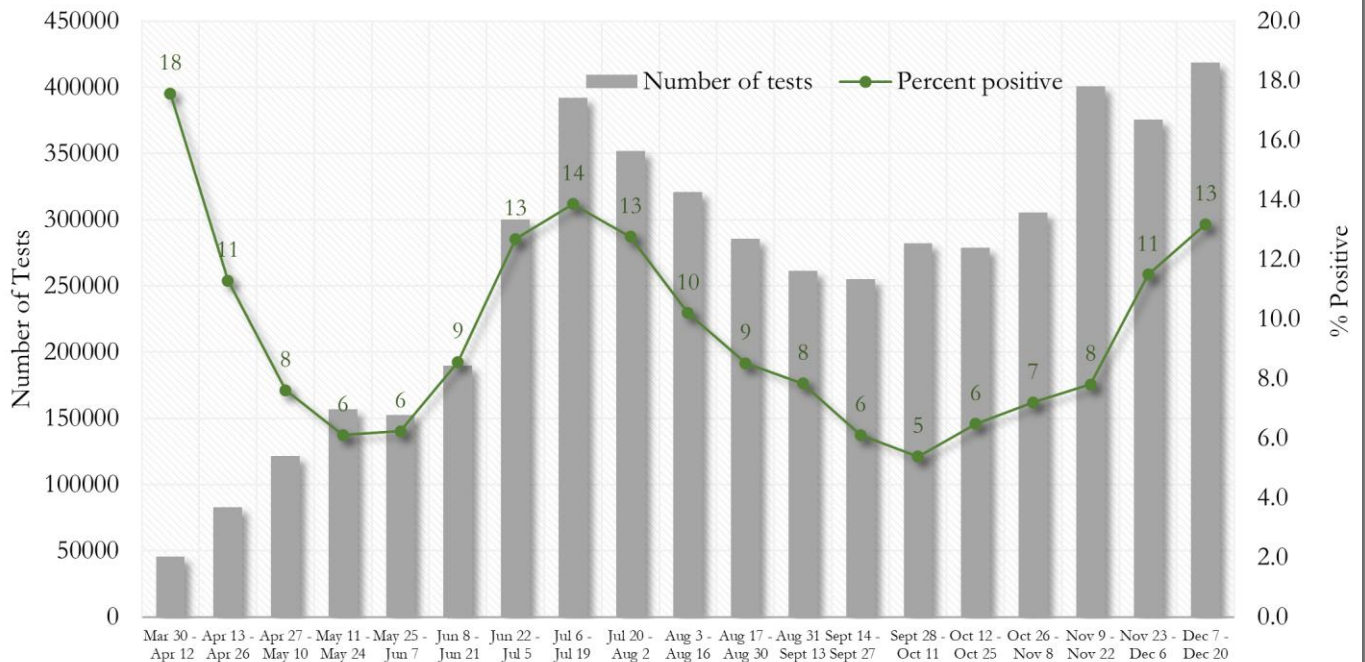
## COVID-19 TESTING AND POSITIVITY IN FULTON COUNTY AND GEORGIA

**Fig. 3. Trends in Positive COVID-19 Tests in Fulton County by 14-day Periods**



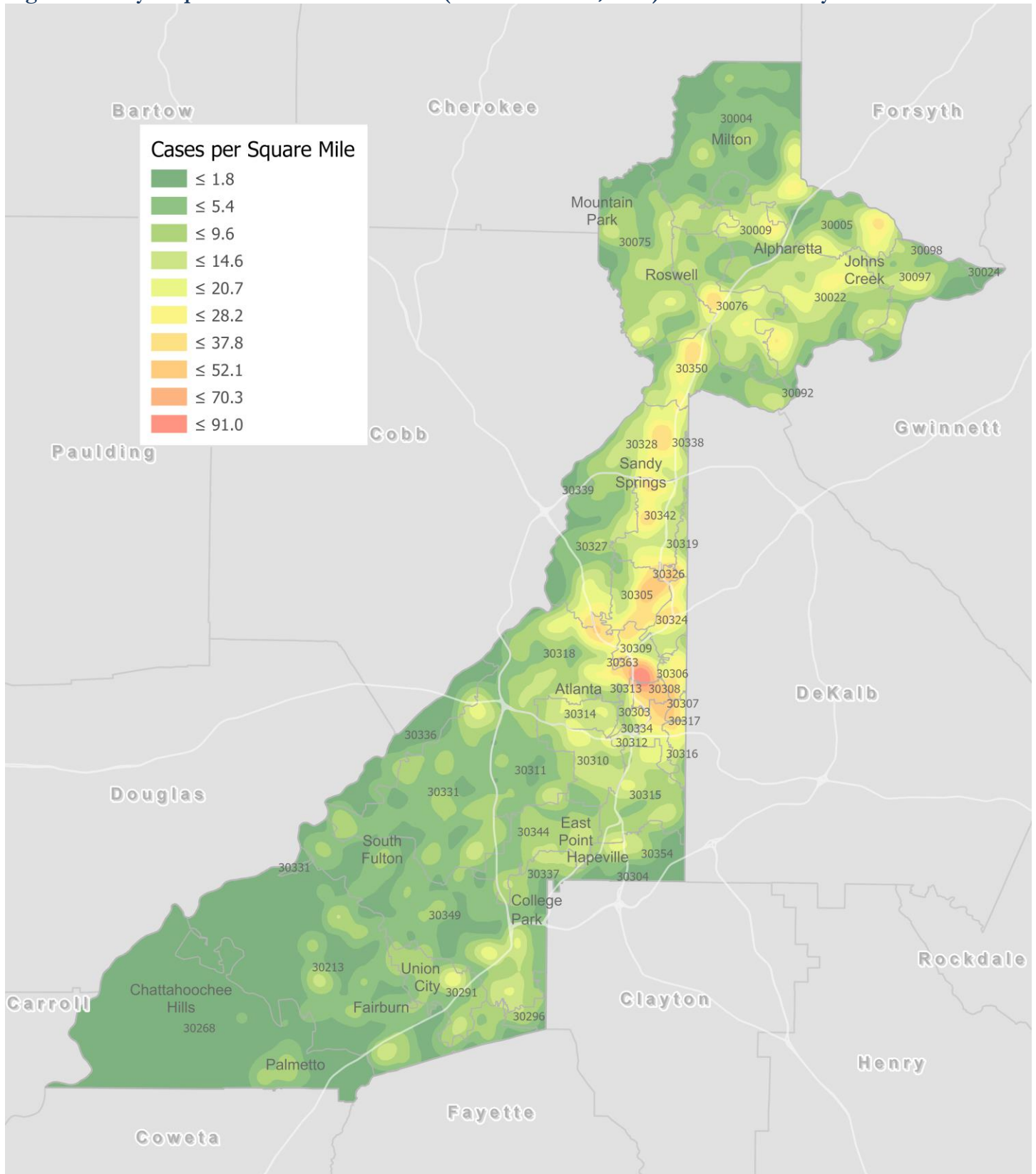
\*Data on Polymerase Chain Reaction (PCR) tests only included. This rate is subject to change as more test results are reported.

**Fig. 4. Trends in Positive COVID-19 Tests in Georgia by 14-day Periods**



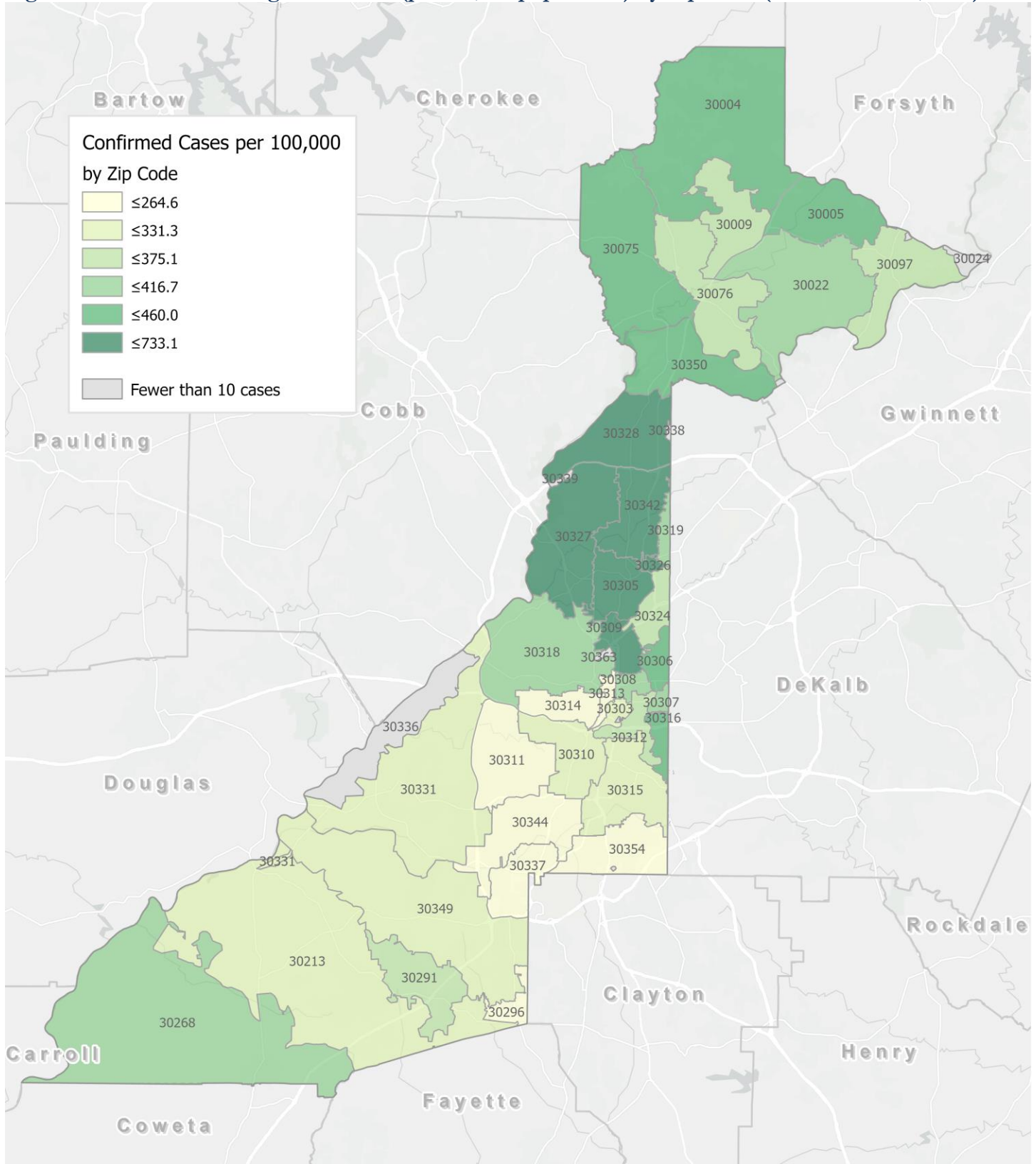
\*Data on Polymerase Chain Reaction (PCR) tests only included. This rate is subject to change as more test results are reported.

Fig. 5. Density Map – New COVID-19 Cases (Dec 17– Dec 30, 2020) in Fulton County



**New COVID-19 cases:** Cases diagnosed in most recent 14 days (based on reported dates of positive sample collection). To allow for lag in reporting results of positive cases from samples collected in the immediate past 7 days, data used for incident diagnoses analyses are moved back by one week. Map reflects new COVID-19 cases diagnosed between Dec 17<sup>th</sup> and Dec 30<sup>th</sup>, 2020 across Fulton County, excluding LTCF cases.

Fig. 6. New COVID-19 Diagnoses Rates (per 100,000 population) by Zip Code (Dec 17– Dec 30, 2020)



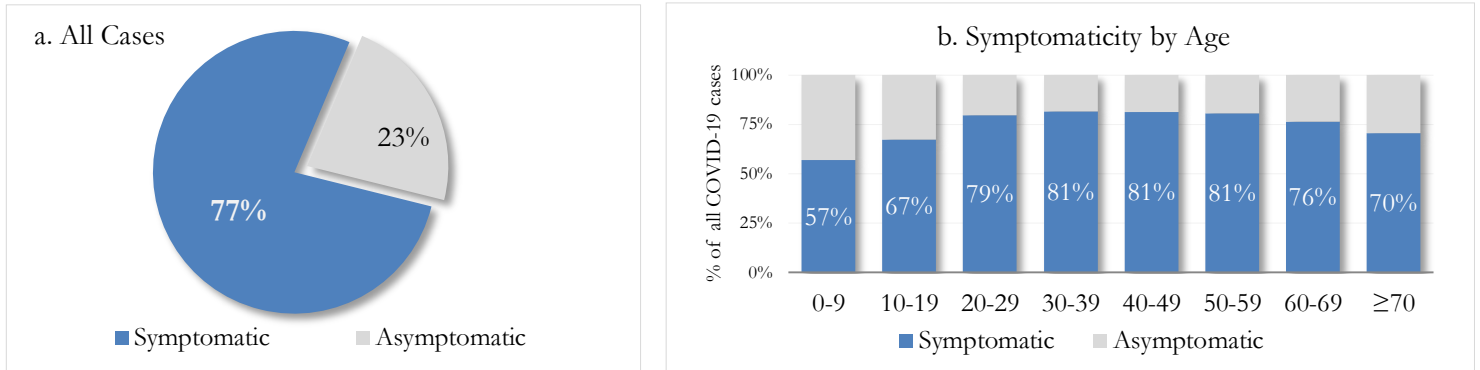
\*Rates shown are per 100,000 populations.

**New COVID-19 cases:** Cases diagnosed in most recent 14 days (based on reported dates of positive sample collection). To allow for lag in reporting results of positive cases from samples collected in the immediate past 7 days, data used for incident diagnoses analyses are moved back by one week. Data used excludes outbreak-related cases at long-term care facilities and map shown reflects only the new non-LTCF cases diagnosed between the dates shown in map title. See page 17 for zip code break down table.

## REPORTING SYMPTOMS AMONG PERSONS WITH COVID-19 IN FULTON

People with COVID-19 have reported a wide range of symptoms ranging from mild symptoms to severe illness. Symptoms may appear 2-14 days after exposure to the virus. Symptoms reported include: cough, shortness of breath/difficulty breathing, fever, chills, muscle pain, headache, sore throat, congestion, nausea or vomiting, diarrhea, or new loss of taste or smell – Centers for Disease Control and Prevention (CDC) <https://www.cdc.gov/coronavirus/2019-ncov/symptoms-testing/symptoms.html>

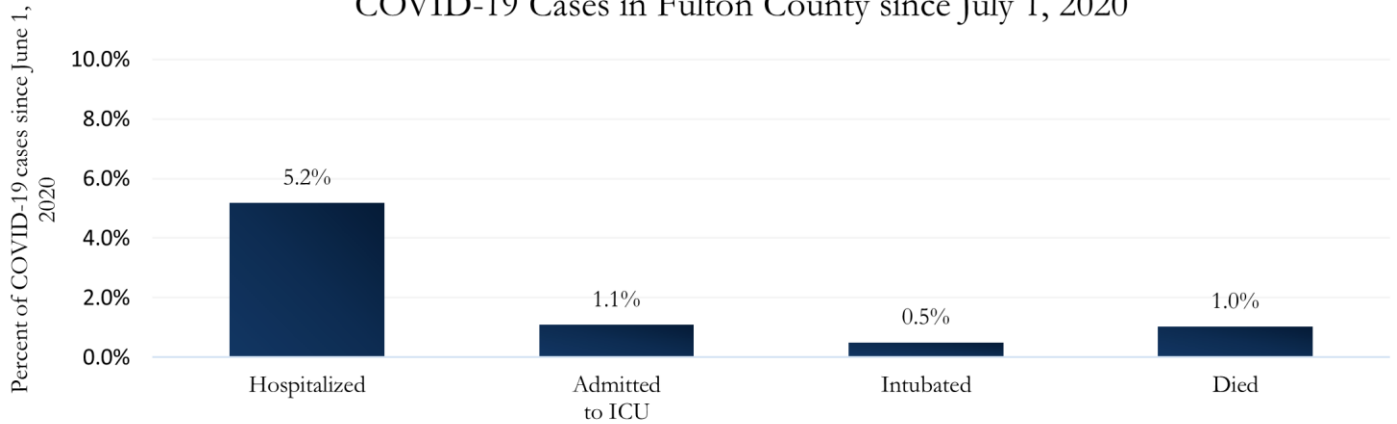
Fig. 7a & b. Total Proportion Reporting Symptoms in Fulton County



\*\*\*COVID-19 cases who have been case interviewed or had medical charts reviewed as of 1/6/21 only. n = 32,165\*\*\*

## COVID-19 HOSPITALIZATIONS, ICU ADMISSIONS AND DEATHS IN FULTON

Fig. 8. Hospitalizations, ICU Admissions, Intubations, and Deaths among COVID-19 Cases in Fulton County since July 1, 2020



## DEMOGRAPHIC DISTRIBUTIONS – COVID-19 CASES AND DEATHS

### A. Distribution of COVID-19 cases by gender, age, and race in Fulton County by Fulton Region

	North Fulton Cities <sup>1</sup> Count (%)	Atlanta Count (%)	South Fulton Cities <sup>2</sup> Count (%)	Unknown City Count (%)	All Fulton Count (%)
<b>Total COVID-19 cases</b>	<b>17752</b>	<b>23042</b>	<b>10187</b>	<b>2662</b>	<b>53643</b>
<b>Gender:</b> Female	9178 (52%)	11618 (50%)	5844 (57%)	1327 (50%)	27967 (52%)
Male	8430 (47%)	11170 (48%)	4277 (42%)	1257 (47%)	25134 (47%)
Unknown*	144 (1%)	254 (1%)	66 (1%)	78 (3%)	542 (1%)
<b>Age:</b> 0-9	673 (4%)	524 (2%)	355 (3%)	73 (3%)	1625 (3%)
10-19	2431 (14%)	1680 (7%)	800 (8%)	190 (7%)	5101 (10%)
20-29	3585 (20%)	6690 (29%)	1873 (18%)	651 (24%)	12799 (24%)
30-39	2708 (15%)	5116 (22%)	2076 (20%)	563 (21%)	10463 (20%)
40-49	2824 (16%)	3096 (13%)	1851 (18%)	419 (16%)	8190 (15%)
50-59	2780 (16%)	2506 (11%)	1470 (14%)	357 (13%)	7113 (13%)
60-69	1450 (8%)	1662 (7%)	934 (9%)	211 (8%)	4257 (8%)
≥70	1291 (7%)	1705 (7%)	817 (8%)	186 (7%)	3999 (7%)
Unknown*	10 (0%)	63 (0%)	11 (0%)	12 (0%)	96 (0%)
<b>Race:</b> Asian, NH	959 (5%)	451 (2%)	49 (0%)	69 (3%)	1528 (3%)
Black, NH	1909 (11%)	9714 (42%)	7360 (72%)	933 (35%)	19916 (37%)
White, NH	8075 (45%)	6703 (29%)	592 (6%)	687 (26%)	16057 (30%)
Hispanic	2839 (16%)	1416 (6%)	814 (8%)	256 (10%)	5325 (10%)
Other, NH	954 (5%)	979 (4%)	262 (3%)	123 (5%)	2318 (4%)
Unknown*	3016 (17%)	3779 (16%)	1110 (11%)	594 (22%)	8499 (16%)

\*Unknown includes cases not yet interviewed.

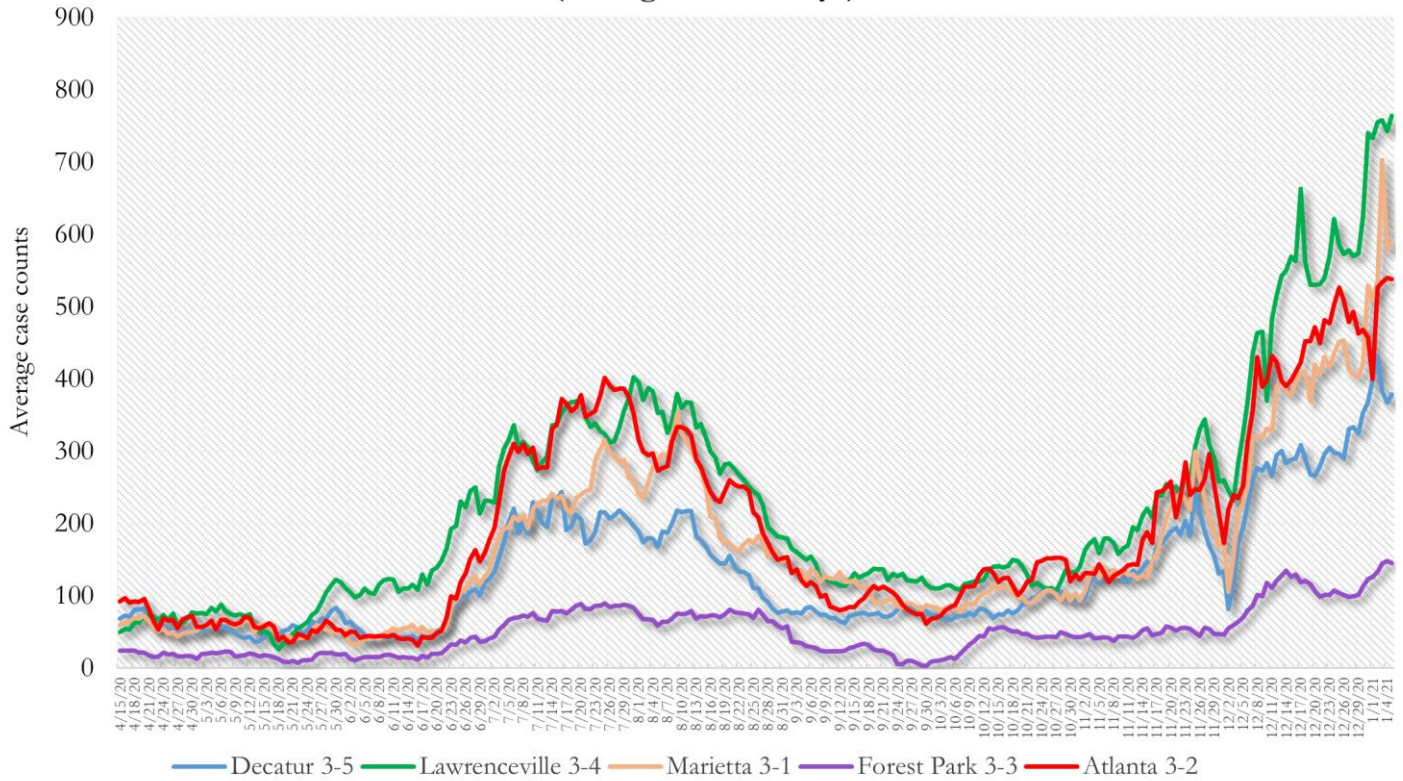
### B. Distribution of COVID-19 deaths by gender, age, and race in Fulton County by Fulton Region

	North Fulton Cities <sup>1</sup> Count (%)	Atlanta Count (%)	South Fulton Cities <sup>2</sup> Count (%)	Unknown City Count (%)	All Fulton Count (%)
<b>Total COVID-19 deaths</b>	<b>164</b>	<b>356</b>	<b>199</b>	<b>27</b>	<b>746</b>
<b>Gender:</b> Female	77 (47%)	166 (47%)	100 (50%)	11 (41%)	354 (47%)
Male	87 (53%)	190 (53%)	99 (50%)	16 (59%)	392 (53%)
Unknown	0	0	0	0	0
<b>Age:</b> ≤ 29	<10	<10	<10	0	<10
30-39	<10	<10	<10	<10	14 (2%)
40-49	<10	<10	11 (6%)	<10	28 (4%)
50-59	<10	29 (8%)	24 (12%)	<10	64 (9%)
60-69	20 (12%)	68 (19%)	44 (22%)	<10	134 (18%)
≥70	129 (79%)	239 (67%)	115 (58%)	18 (67%)	501 (67%)
Unknown	0	0	0	0	0
<b>Race:</b> Asian, NH	<10	<10	<10	<10	12 (2%)
Black, NH	28 (17%)	286 (80%)	162 (81%)	10 (37%)	486 (65%)
White, NH	117 (71%)	58 (16%)	27 (14%)	14 (52%)	216 (29%)
Hispanic	15 (9%)	<10	<10	<10	29 (4%)
Other, NH	0	<10	<10	0	<10
Unknown	0	<10	0	0	<10

<sup>1</sup>Includes all Fulton County cities north of Atlanta (Alpharetta, Johns Creek, Milton, Mountain Park, Roswell, Sandy Springs) <sup>2</sup>Includes all cities south of Atlanta (College Park, Chattahoochee Hills, East Point, Fairburn, Hapeville, Palmetto, South Fulton, Union City). **Note:** All data reported are preliminary and subject to change. This table includes data on only confirmed COVID-19 deaths and is subject to change as GA DPH completes cause of death confirmation processes.

**COVID-19 CASE TRENDS IN FULTON AND SURROUNDING DISTRICTS**

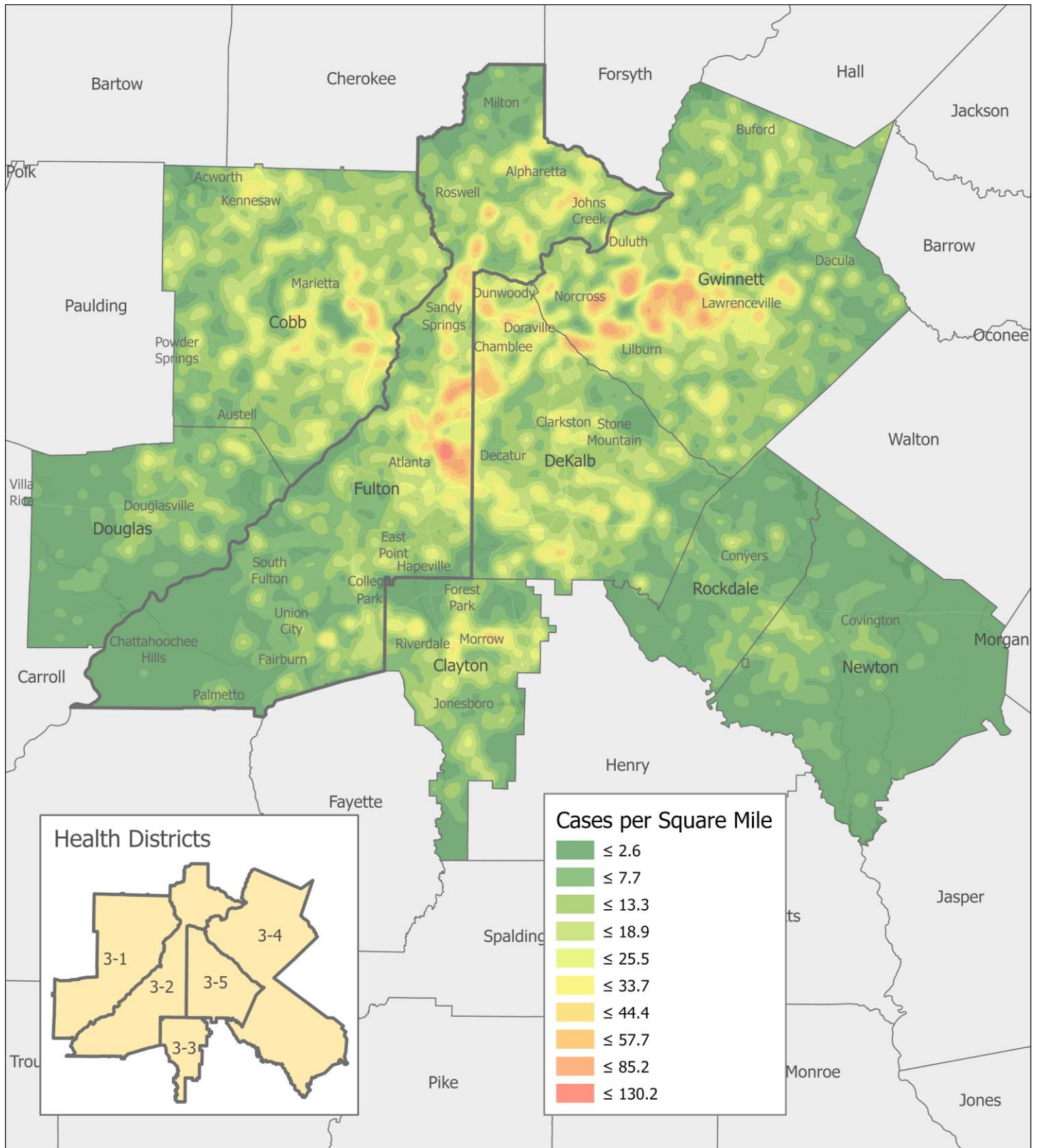
**Fig. 9. Daily Case Counts for Atlanta Metro Districts  
(Averaged over 7 days)**



\*Graph shows the average number of cases calculated from the daily cumulative case counts in the metro Atlanta districts. Increases in daily cumulative case counts may include cases diagnosed earlier during the pandemic but were only recently reported to the state as cases diagnosed belonging to these districts. Delays in data reporting may cause the trend line to appear as decreasing.

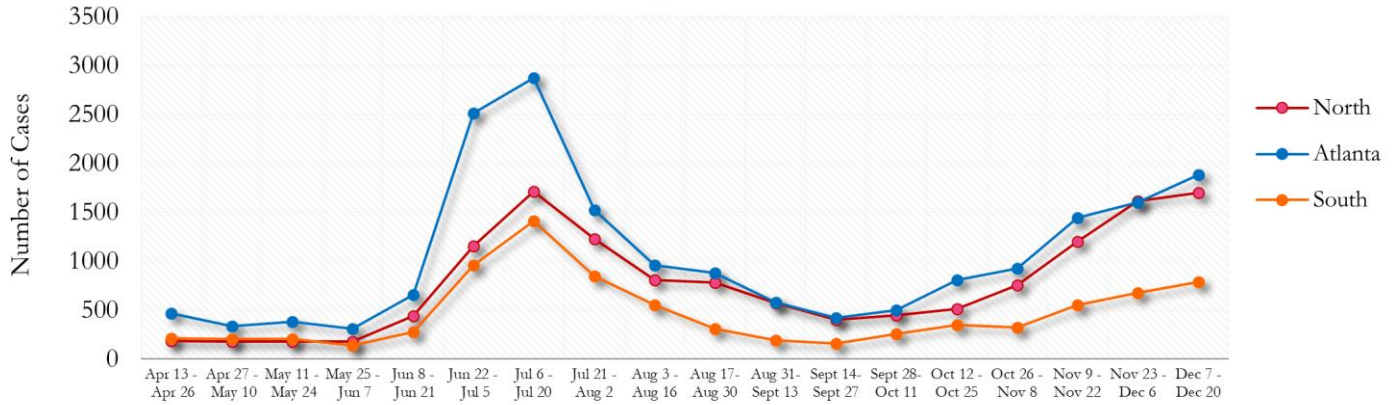


Fig. 10. COVID-19 Cases in Fulton County and Surrounding Districts (Dec 17 – Dec 30, 2020)



**TRENDS IN COVID-19 CASES AMONG DEMOGRAPHIC GROUPS (14 DAY PERIODS)**

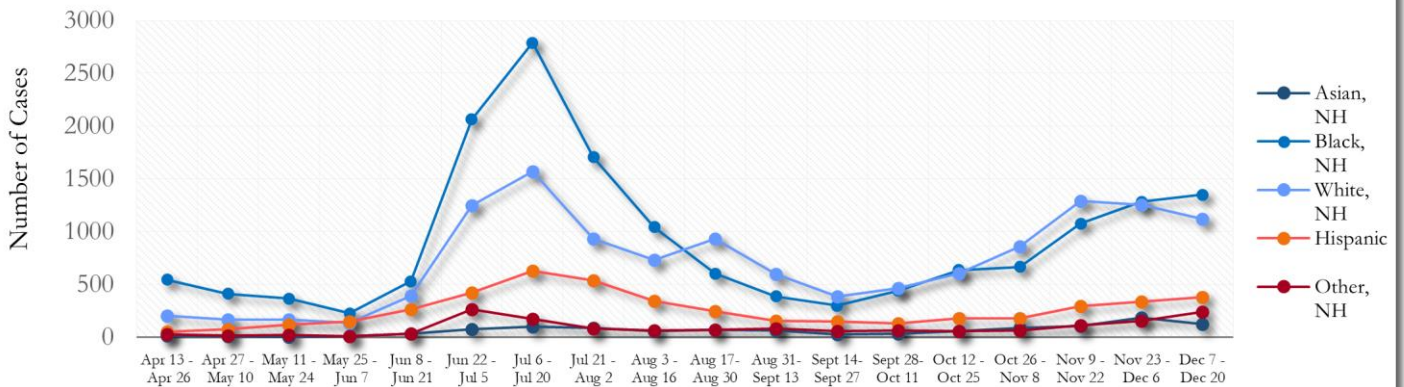
**Fig. 11. Trends in Geographic distribution of COVID-19 Cases in Fulton County by 14-day periods**



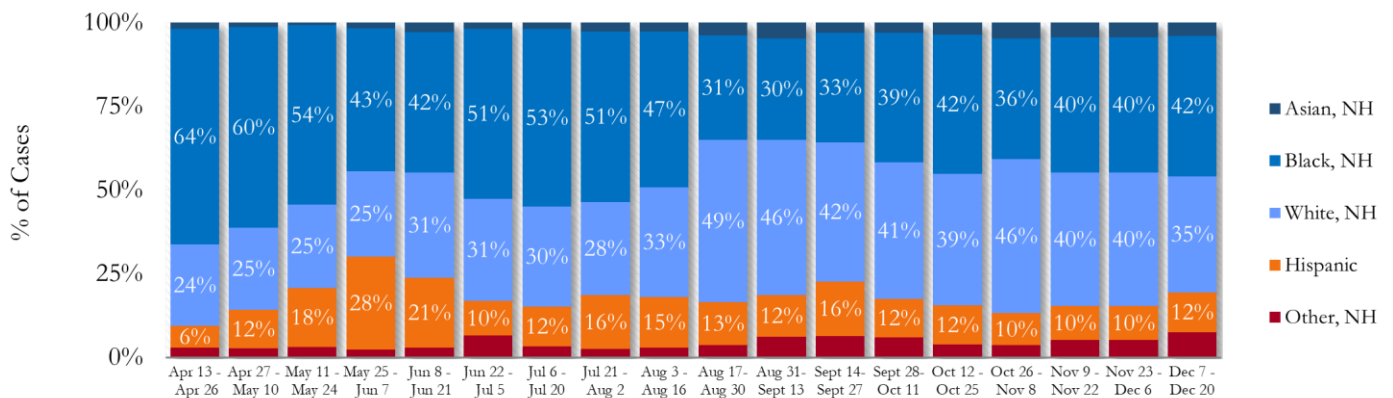
\*North - Includes all Fulton cities north of Atlanta (Alpharetta, Johns Creek, Milton, Mountain Park, Roswell, Sandy Springs)

\*South - Includes all Fulton cities south of Atlanta (College Park, Chattahoochee Hills, East Point, Fairburn, Hapeville, Palmetto, South Fulton, and Union City)

**Fig. 12. Trends in Racial Distribution of COVID-19 Cases in Fulton County by 14-day periods**

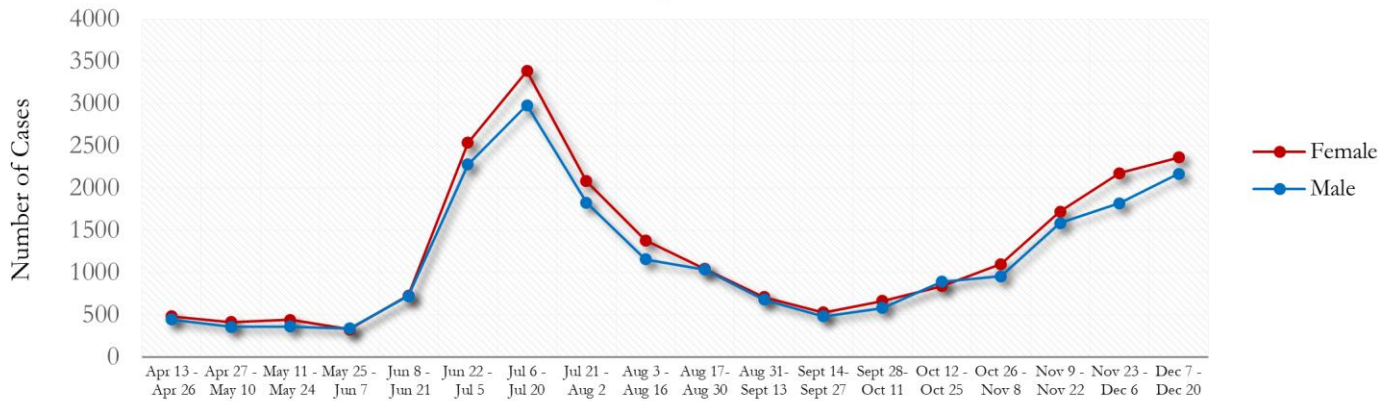


**Fig. 13. Racial Distribution of COVID-19 Cases in Fulton County by 14-day periods**

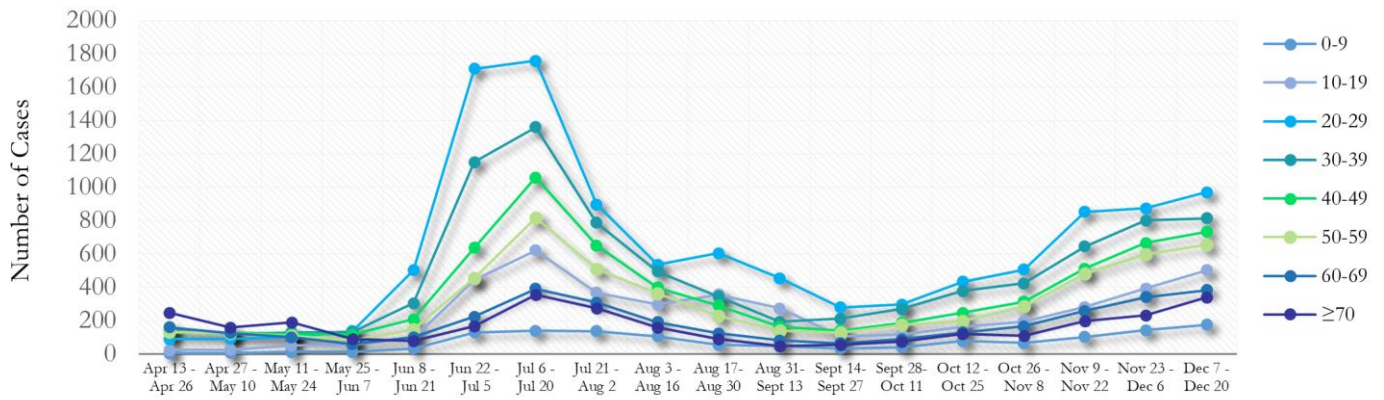


About 16% of COVID cases are missing data on patient race and ethnicity. The majority of new cases in the past two weeks were Black, NH (42%) and White, NH (35%).

**Fig. 14. Trends in Gender Distribution of COVID-19 Cases in Fulton County by 14-day periods**

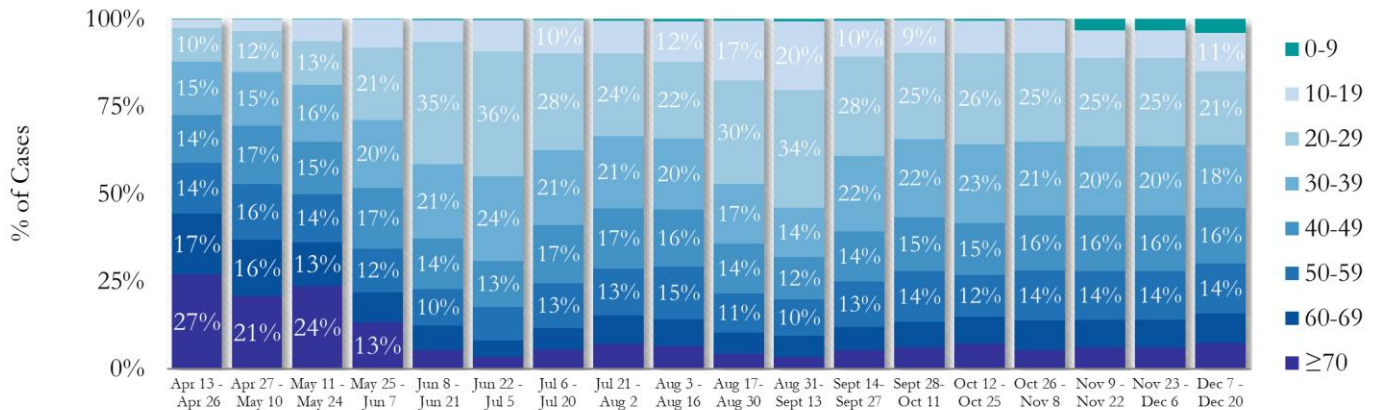


**Fig. 15. Trends in Age Distribution of COVID-19 Cases in Fulton County by 14-day periods**



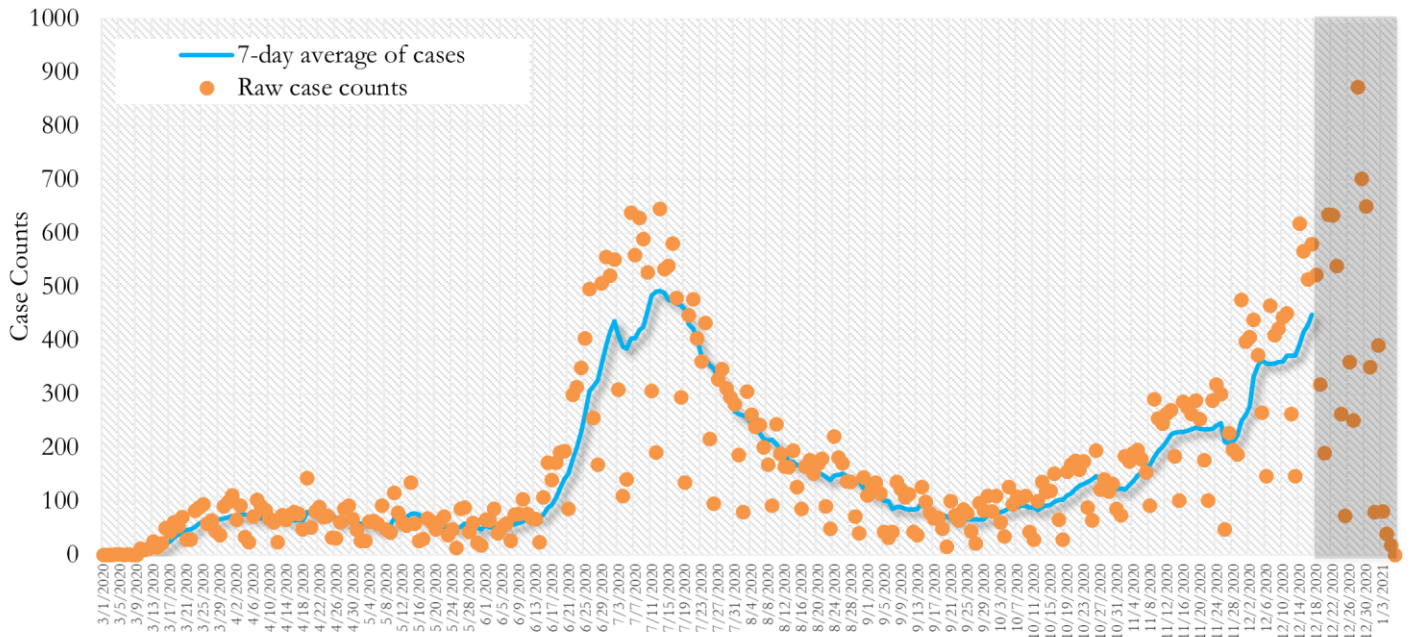
Earlier (March-May 2020) large proportions of reported cases were among persons aged 60 and older. In the most recent two weeks, 20-29 year olds accounted for the highest number of new cases among all age groups, followed by 30-39 year olds.

**Fig. 16. Age Distribution of COVID-19 Cases in Fulton County by 14-day periods**



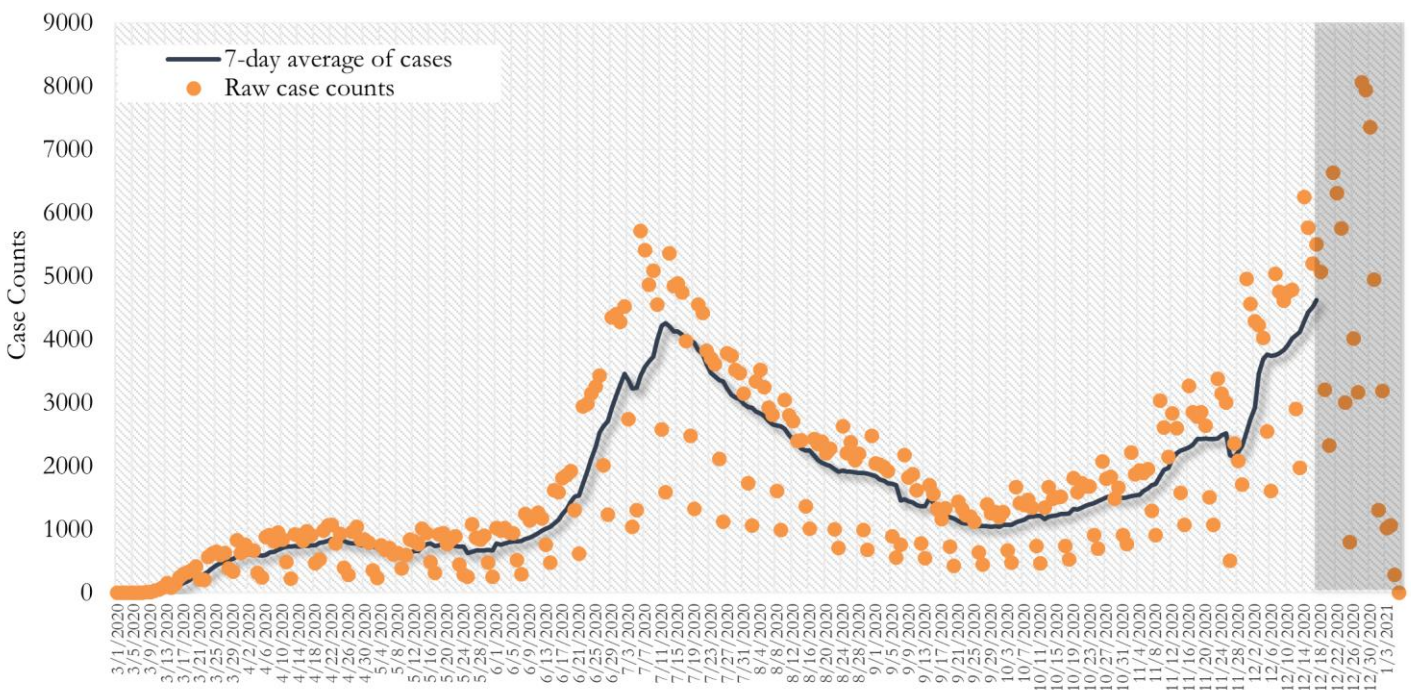
**TRENDS IN COVID-19 CASES, HOSPITALIZATIONS AND DEATHS (7-DAY MOVING AVE.)**

**Fig. 17. New COVID-19 Cases in Fulton County Daily (Averaged over 7 days)**



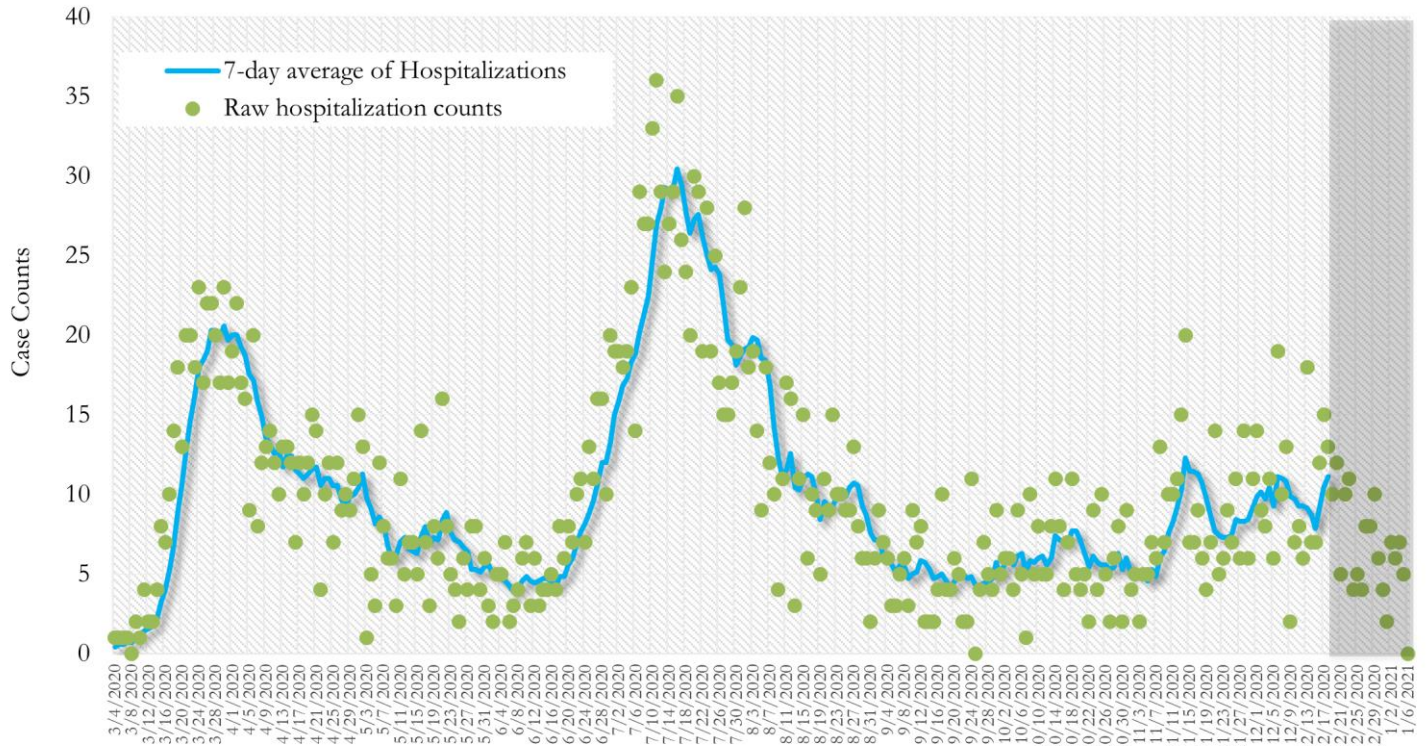
\*Date of collection of first positive sample used (report creation date used where sample collection date is missing). Graph above reflects the trend in COVID-19 diagnosis. Due to the high volume of testing in recent weeks, there have been delays in reporting lab results. Thus, the trend is subject to change as more lab results get added to the state surveillance database.

**Fig. 18. New COVID-19 Cases in Georgia State Daily (Averaged over 7 days)**



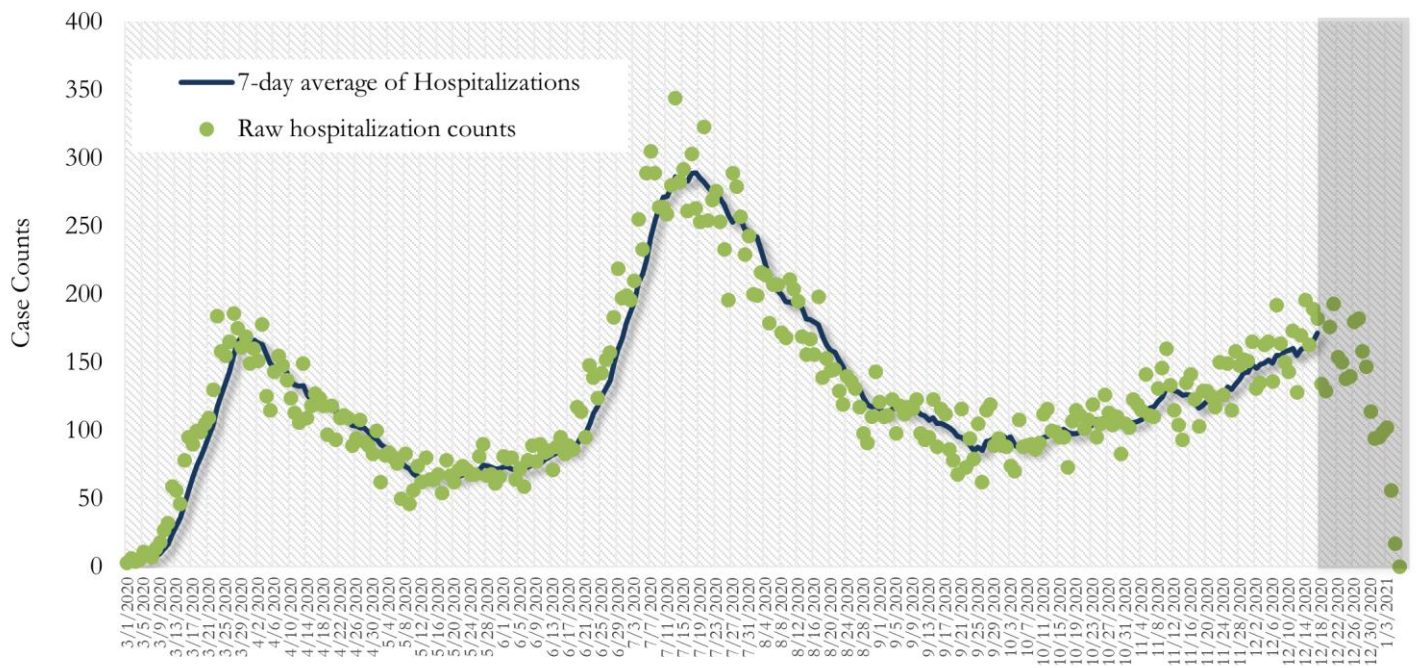
\*Date of collection of first positive sample used (report creation date used where sample collection date is missing). Graph above reflects the trend in COVID-19 diagnosis. Due to the high volume of testing in recent weeks, there have been delays in reporting lab results. Thus, the trend is subject to change as more lab results get added to the state surveillance database.

**Fig. 19. COVID-19 Hospitalizations in Fulton County Daily (Averaged over 7 days)**



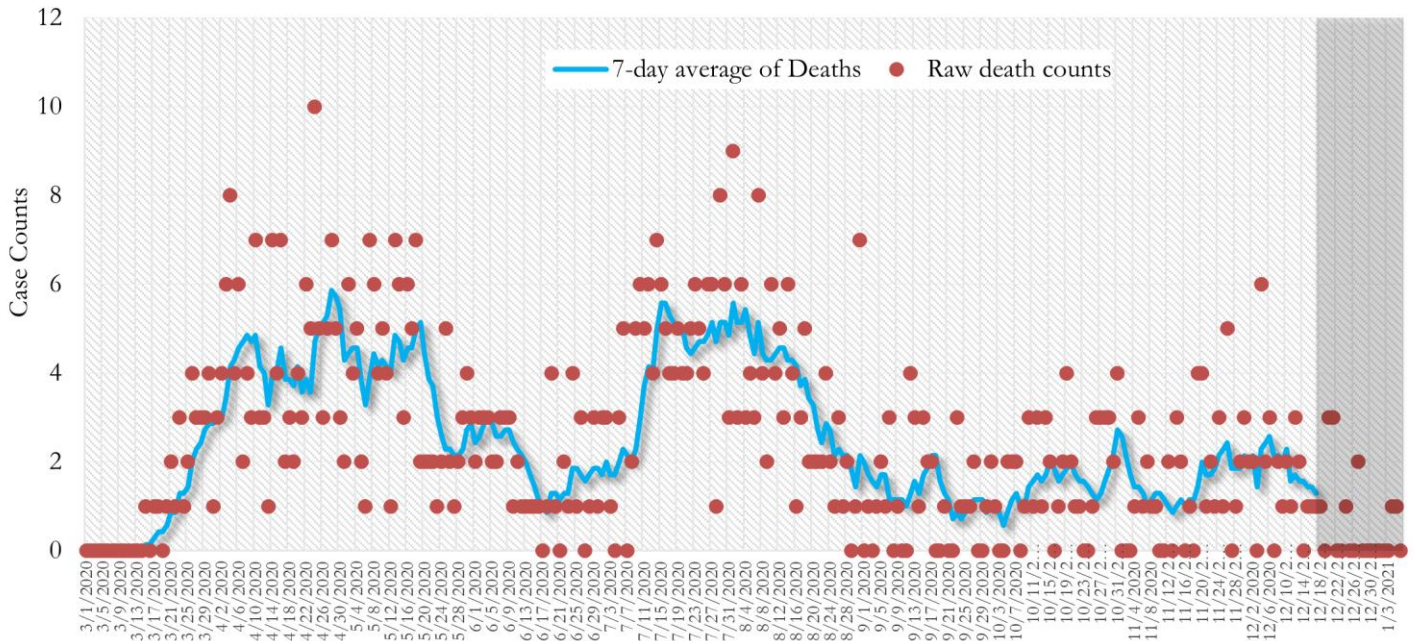
\*Reported date of hospital admission used. Graph above reflects the trend in COVID-19 hospitalizations. Due to the high volume of new cases being added daily, there have been delays in reporting hospitalization data. Thus, the trend is likely to change as more hospitalization data is reported in the state surveillance database.

**Fig. 20. COVID-19 Hospitalizations in Georgia State Daily (Averaged over 7 days)**



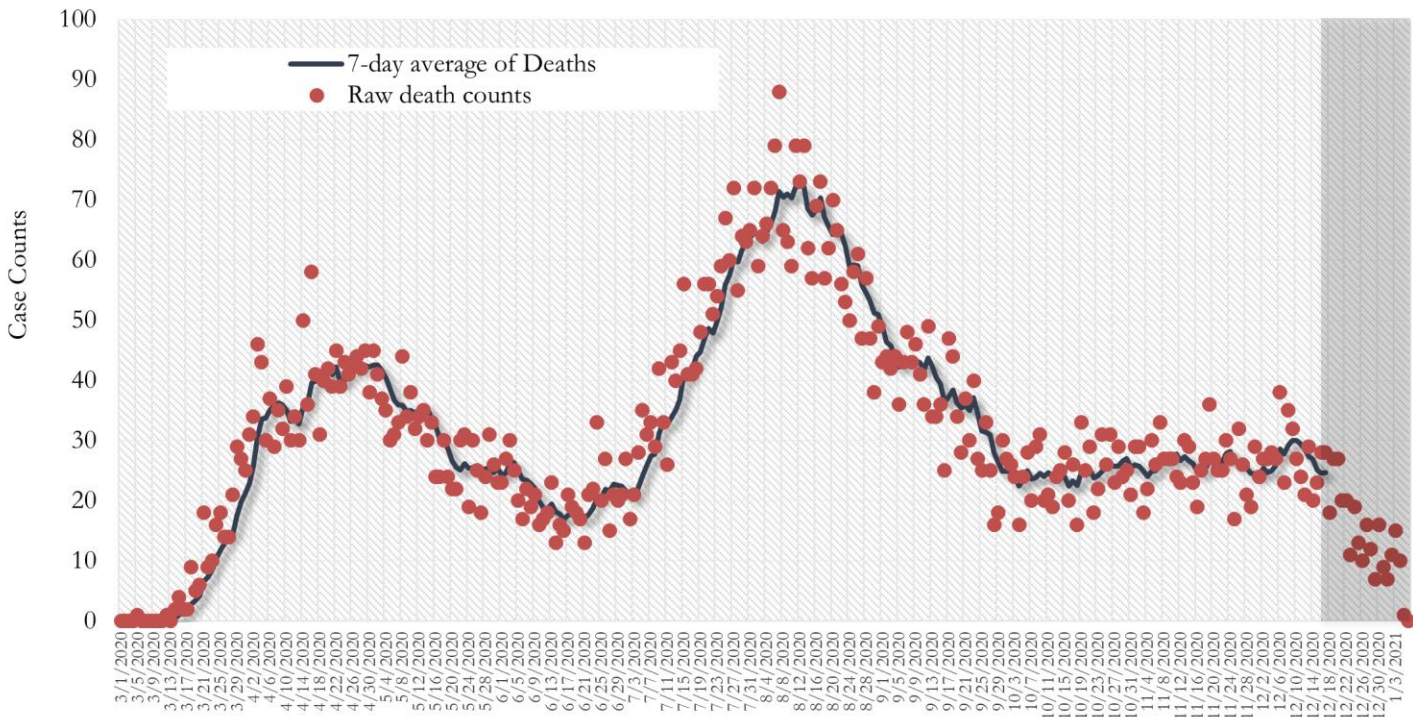
\*Reported date of hospital admission used. Graph above reflects the trend in COVID-19 hospitalizations. Due to the high volume of new cases being added daily, there have been delays in reporting hospitalization data. Thus, the trend is likely to change as more hospitalization data is reported in the state surveillance database.

**Fig. 21. COVID-19 Deaths in Fulton County Daily (Averaged over 7 days)**



\* Reported date of death used. Graph above reflects the trend in deaths attributed to COVID-19. The trend is likely to change as more data on deaths among persons with COVID-19 is reported in the state surveillance database.

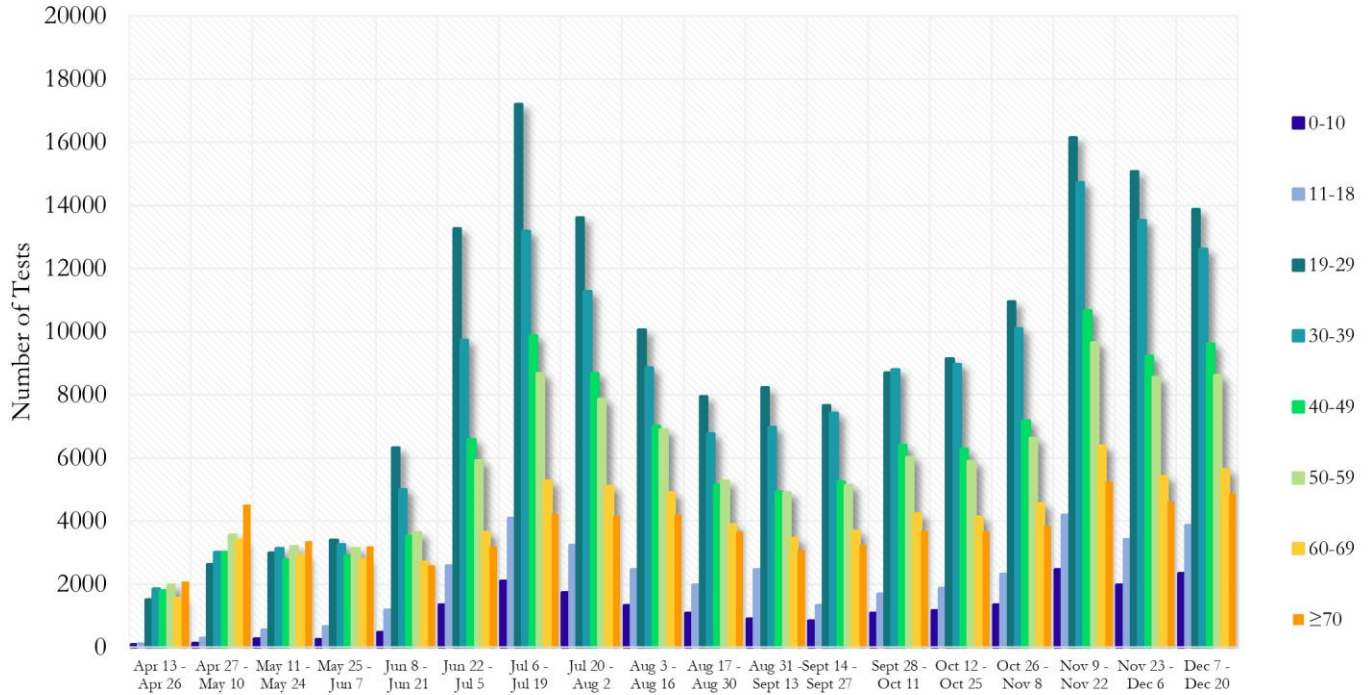
**Fig. 22. COVID-19 Deaths in Georgia State Daily (Averaged over 7 days)**



\* Reported date of death used. Graph above reflects the trend in deaths attributed to COVID-19. The trend is likely to change as more data on deaths among persons with COVID-19 is reported in the state surveillance database.

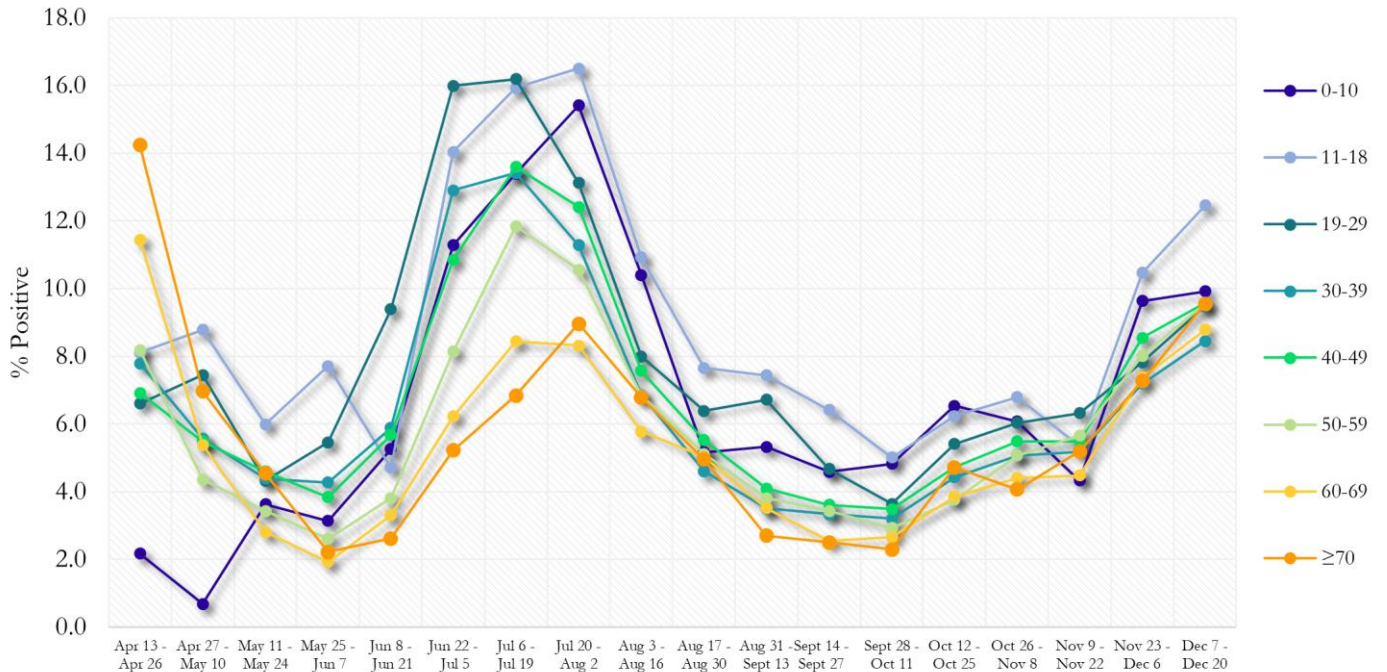
**COVID-19 TESTING AND POSITIVITY IN FULTON COUNTY BY AGE AND RACE**

**Fig. 23. COVID-19 Tests by Age in Fulton County by 14-day Periods**



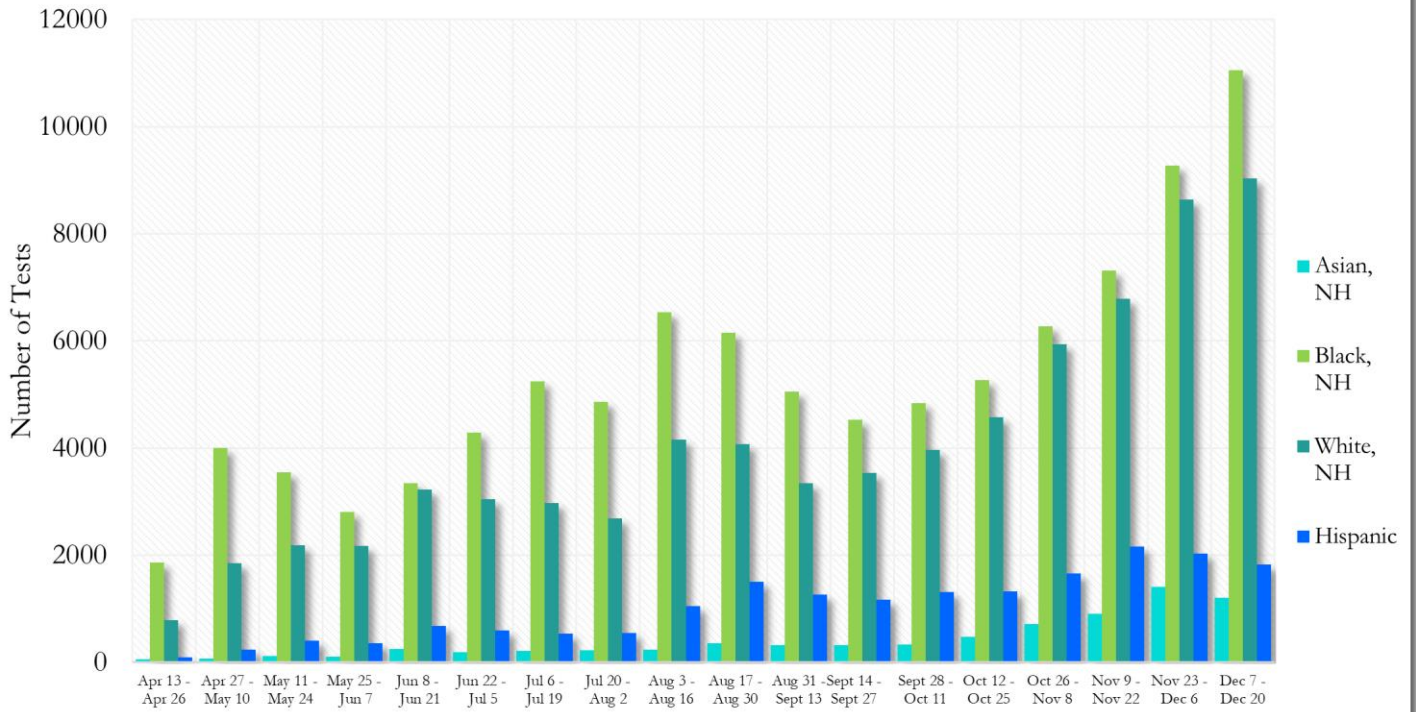
\*Data on Polymerase Chain Reaction (PCR) tests only included.

**Fig. 24. Percent Positive COVID-19 Tests by Age Group in Fulton County by 14-day Periods**



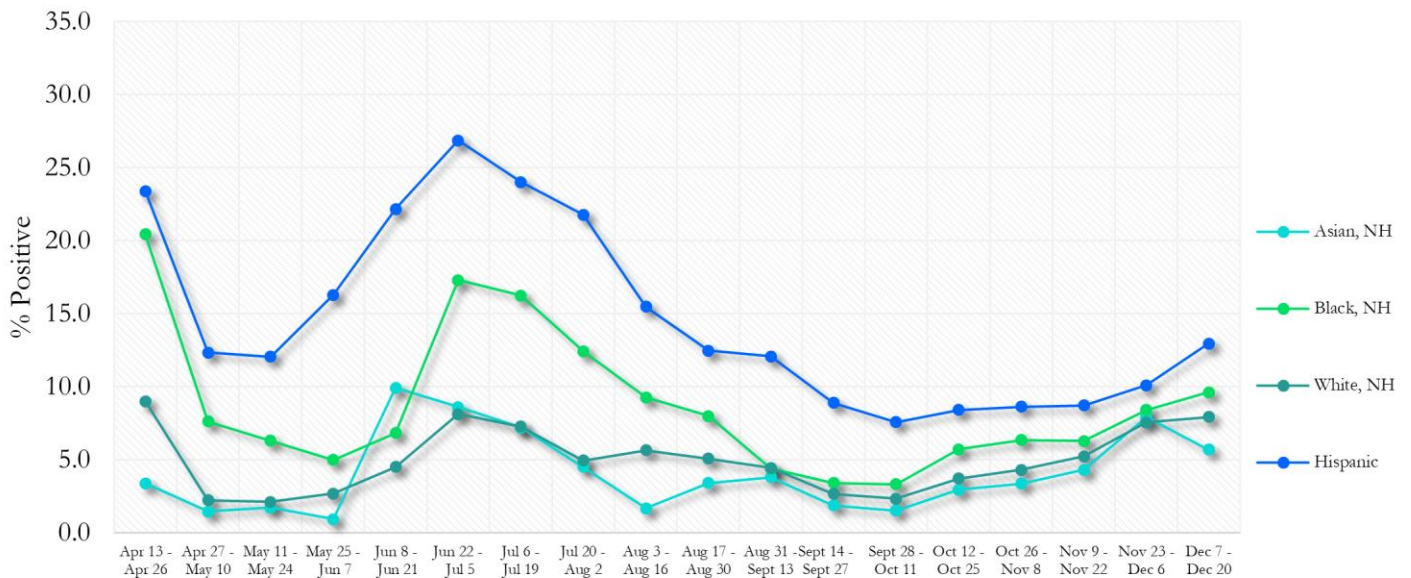
\*Data on Polymerase Chain Reaction (PCR) tests only included.

**Fig. 25. COVID-19 Tests by Race and Ethnicity in Fulton County by 14-day Periods**



\*Data on Polymerase Chain Reaction (PCR) tests only included.

**Fig. 26. Percent Positive COVID-19 Tests by Race and Ethnicity in Fulton County by 14-day Periods**



\*Data on Polymerase Chain Reaction (PCR) tests only included.



## COVID-19 CASE COUNTS BY ZIP CODE

	Prior (12/29/20)	Current Total (1/6/20)		New Cases (Period: 12/3/20 – 12/30/20) <sup>1</sup>		
	Count	Count	%	Recent 14 d. (Dec 17- Dec 30)	Prior 14 d. (Dec 3– Dec 16)	% change <sup>2</sup>
<b>All Fulton</b>	49910	53642	100%	7158	5494	↑ 30.3%
30004	1990	2169	4.0%	398	242	↑ 64.5%
30005	1228	1342	2.5%	263	204	↑ 28.9%
30009	909	979	1.8%	130	132	↓ 1.5%
30022	2646	2920	0.8%	523	402	↑ 30.1%
30023	13	15	<0.1%	<10	<10	-
30024	43	47	<0.1%	<10	10	↓ 30.0%
30075	1980	2158	4.0%	333	214	↑ 55.6%
30076	1967	2170	4.0%	325	235	↑ 38.3%
30080	<10	<10	<0.1%	0	0	-
30097	756	832	1.6%	157	116	↑ 35.3%
30098	-	-	-	0	0	-
30135	<10	<10	<0.1%	<10	0	-
30138	<10	<10	<0.1%	0	0	-
30139	-	-	-	0	0	-
30213	1852	1991	3.7%	250	185	↑ 35.1%
30268	328	363	0.7%	69	41	↑ 68.3%
30291	1273	1356	2.5%	137	135	↑ 1.5%
30296	136	143	0.3%	21	17	↑ 23.5%
30301	20	22	<0.1%	<10	<10	-
30303	509	526	1.0%	32	35	↓ 8.6%
30305	1594	1720	3.2%	241	196	↑ 23.0%
30306	689	741	1.4%	117	64	↑ 82.8%
30307	337	360	0.7%	45	34	↑ 32.4%
30308	1069	1134	2.1%	126	111	↑ 13.5%
30309	1573	1677	3.1%	231	156	↑ 48.1%
30310	1193	1291	2.4%	154	132	↑ 16.7%
30311	1237	1316	2.5%	118	146	↓ 19.2%
30312	1398	1498	2.8%	169	133	↑ 27.1%
30313	428	440	0.8%	21	34	↓ 38.2%
30314	841	892	1.7%	91	77	↑ 18.2%
30315	1544	1646	3.1%	196	187	↑ 4.8%
30316	613	658	1.2%	91	47	↑ 93.6%
30318	2926	3119	5.8%	394	291	↑ 35.4%
30319	301	322	0.6%	50	29	↑ 72.4%
30321	15	15	<0.1%	<10	0	-
30324	1508	1600	3.0%	165	125	↑ 32.0%
30326	498	523	1.0%	52	51	↑ 2.0%
30327	1220	1344	2.5%	231	167	↑ 38.3%
30328	1767	1939	3.6%	317	232	↑ 36.6%
30331	2711	2917	5.4%	359	249	↑ 44.2%
30334	16	14	<0.1%	<10	0	-
30336	128	132	0.2%	11	<10	↑ 37.5%
30337	533	555	1.0%	50	44	↑ 13.6%
30338	119	124	0.2%	10	<10	↑ 150.0%
30339	334	314	0.6%	25	10	↑ 150.0%
30340	37	36	<0.1%	0	<10	↓ 100.0%
30341	38	36	<0.1%	<10	0	-
30342	2064	2237	4.2%	306	227	↑ 34.8%
30344	1484	1579	2.9%	159	162	↓ 1.9%
30345	26	25	<0.1%	0	0	-

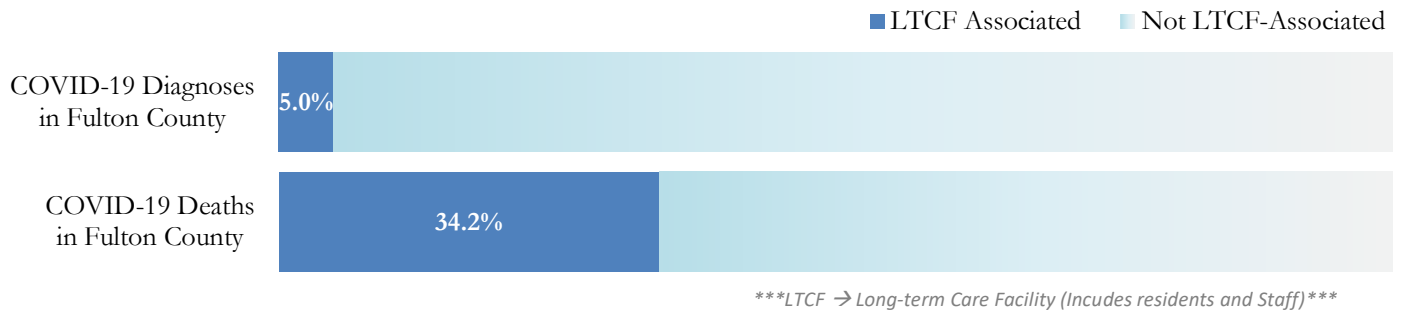
30349	2862	3034	5.7%	332	266	↑ 24.8%
30350	1384	1502	2.8%	258	185	↑ 39.5%
30354	688	746	1.4%	81	60	↑ 35.0%
30358	<10	<10	<0.1%	<10	<10	-
30363	133	137	0.3%	<10	16	↓ 43.8%
30374	37	40	<0.1%	<10	<10	-
30606	<10	<10	<0.1%	0	0	-
31131	<10	<10	<0.1%	0	<10	↓ 100.0%
31150	<10	<10	<0.1%	<10	0	-
Unknown	4622	918	1.7%	87	74	-

<sup>1</sup>**New cases:** Cases diagnosed in most recent 28 days (based on reported dates of positive sample collection). To allow for lag in reporting results of new diagnoses from samples collected in the most recent week, data used for incident diagnoses analyses were moved back by one week. <sup>2</sup>**Percent change:** These reflect the percentage increase or decrease of new diagnoses between the 14 days preceding the past 7 days and the 14 days preceding that. Changes in ZIP codes with less than 10 cases in both 2 week intervals are not reported\*\*Data cleaning (either during case interviews or address geo-coding) may lead to reassignment of few cases from one territory to another based on their corrected addresses. These may appear as “decreases” when compared to the previous day’s count. These do not reflect errors in the data collection or analysis process but only reflect the minor day-to-day fluctuations in case counts that arise in an evolving public health database like COVID’s. **Note:** Sharp increases in territorial COVID case counts often reflect new cases diagnosed at long term care facilities located in those territories during facility-wide /mass screening events **All data reported are preliminary and subject to change.**

## COVID-19 IN LONG-TERM CARE FACILITIES IN FULTON COUNTY

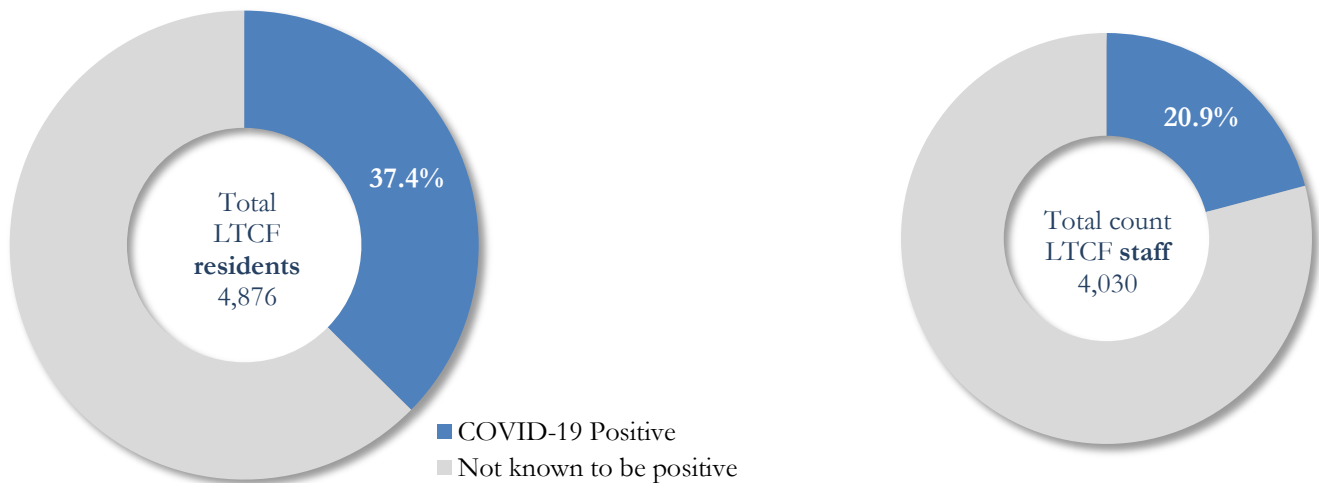
Older persons (aged 65 years and older) and persons who live in nursing homes or other long-term care facilities seem to be at higher risk for developing more serious complications from COVID-19. Extra precautions are recommended for individuals within this risk groups – Centers for Disease Control and Prevention (CDC 2020) <https://www.cdc.gov/coronavirus/2019-ncov/need-extra-precautions/people-at-higher-risk.html>

Fig. 27. COVID-19 Diagnoses and Deaths in Fulton County Associated with Long-Term Care Facilities



## COVID-19 POSITIVITY:

Fig. 28. COVID-19 Positivity at 64 reporting Long-Term Care Facilities (LTCF) in Fulton County



COVID-19 Cases, Hospitalizations, and Deaths among 64 reporting Long-Term Care Facilities in Fulton County

	LTCF Residents (n=4,876)			LTCF Staff (n=4,030)		
	Cases	Hospitalizations	Deaths	Cases	Hospitalizations	Deaths
Average (count per fac.) <sup>1</sup>	29	5	4	13	1	<0.1
Median (count per fac.) <sup>1</sup>	11	3	1	9	0	0
Lowest counts	0	0	0	0	0	0
Highest counts	143	48	30	70	8	2
Total Count	1823 (37.4%) <sup>a</sup>	337 (18.5%) <sup>b</sup>	250 (13.7%) <sup>b</sup>	841 (20.9%) <sup>a</sup>	33 (3.9%) <sup>b</sup>	5 (<1.0%) <sup>b</sup>

<sup>a</sup> Percentage shown reflects proportion of total residents/staff tested who were positive (i.e. COVID-19 Positivity). | <sup>b</sup> Percentages shown are proportions of persons residents/staff diagnosed with COVID-19 who were hospitalized or died after diagnoses.