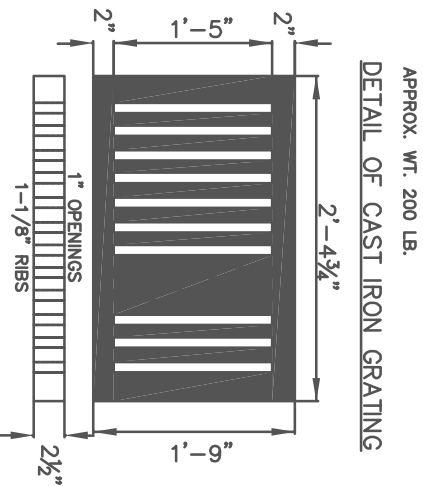
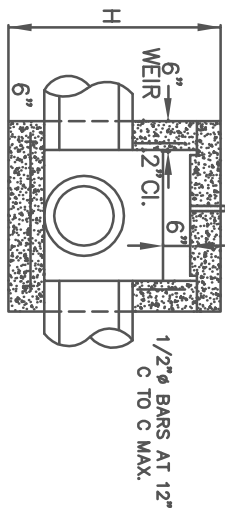


NOTE:
(ROWLOCK) BRICK INVERTS REQUIRED AT ALL JUNCTION BOXES & DROP INLETS, CONCRETE INVERT IS ALLOWED
CAN BE BRICK OR PRECAST BOX



APPROX. WT. 200 LB.

DETAIL OF CAST IRON GRATING



TYPE B

SEE SHEET NO. 511 FOR DIMENSIONS

FULTON COUNTY STANDARD DETAIL 510
DROP INLETS, CONCRETE,
DETAILS FOR PAVED SECTIONS ONLY

DATE	REVISIONS	DATE	REVISIONS	DGS/DRN/CHKD: CMS
8/08	RC			APPROVED: REW
				DATE: 12-2-05



FULTON COUNTY PUBLIC WORKS
141 PRYOR ST. ATLANTA, GA. 30303
404-612-7400 FAX: 404-224-0498

DRAWING NO.
510