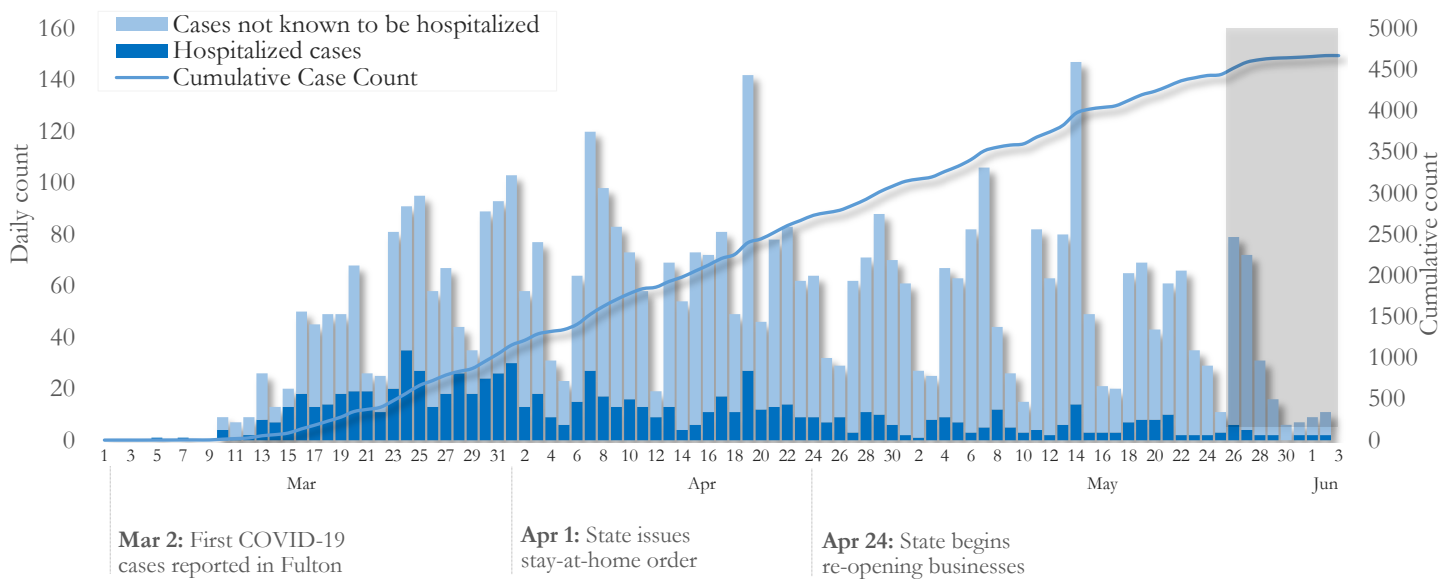


## SUMMARY

- As of June 3, 2020, Fulton County has recorded **4,673** cases of the 2019 novel coronavirus (COVID-19) and **244** deaths.
- The central portion of the county (Atlanta metro) accounts for 47% of the cumulative case count while the northern and southern parts of the county together account for 44% of the COVID-19 cumulative case count in the county.
- By city, cumulative COVID-19 diagnoses rates range from 143.5 per 100,000 persons (Johns Creek) to 863.5 per 100,000 persons (Union City).
- Among all persons diagnosed with COVID-19 in Fulton County, 19% required hospitalization and 5.2% died.
- Residents and staff of long-term care facilities account for 25% of COVID-19 diagnoses and 53% of COVID-19 deaths in Fulton County.

## Daily and Cumulative COVID-19 diagnoses in Fulton County, GA (6/03/20)



\*Counts shown reflect the number of confirmed cases as of 9:00am on 6/03/20 using the date of first positive sample collection. Where date of sample collection was not available or missing, the date of report creation in GA SENDSS was used instead. **Note:** All data reported are preliminary and subject to change. Delays in data reporting may cause changes in data counts, particularly in the shaded portion.

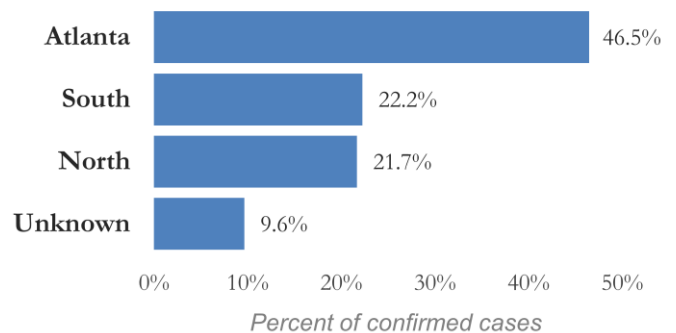
## DISTRIBUTION OF COVID-19 DIAGNOSES BY REGION

**New cases:** 53% of the new COVID-19 cases diagnosed in the past 2 weeks occurred in Atlanta while 22% and 18% occurred in the Northern and Southern regions of the county respectively.

Fulton Region	% Cumulative count	% New cases*
Atlanta	46.5%	52.5%
North <sup>1</sup>	21.7%	22.1%
South <sup>2</sup>	22.2%	18.3%
Unincorporated/Unknown	9.6%	7.1%

<sup>1</sup>Includes all Fulton County cities north of Atlanta metro (Alpharetta, Milton, Johns Creek, Roswell, Sandy Springs, Mountain Park) | <sup>2</sup>Includes all cities south of Atlanta (College Park, Chattahoochee Hills, East Point, Hapeville, Palmetto, South Fulton, Fairburn, and Union City) \***New cases:** Cases diagnosed in the past 2 weeks only (using the date of sample collection).

### Distribution of COVID 19 cases by Region (6/03/20)

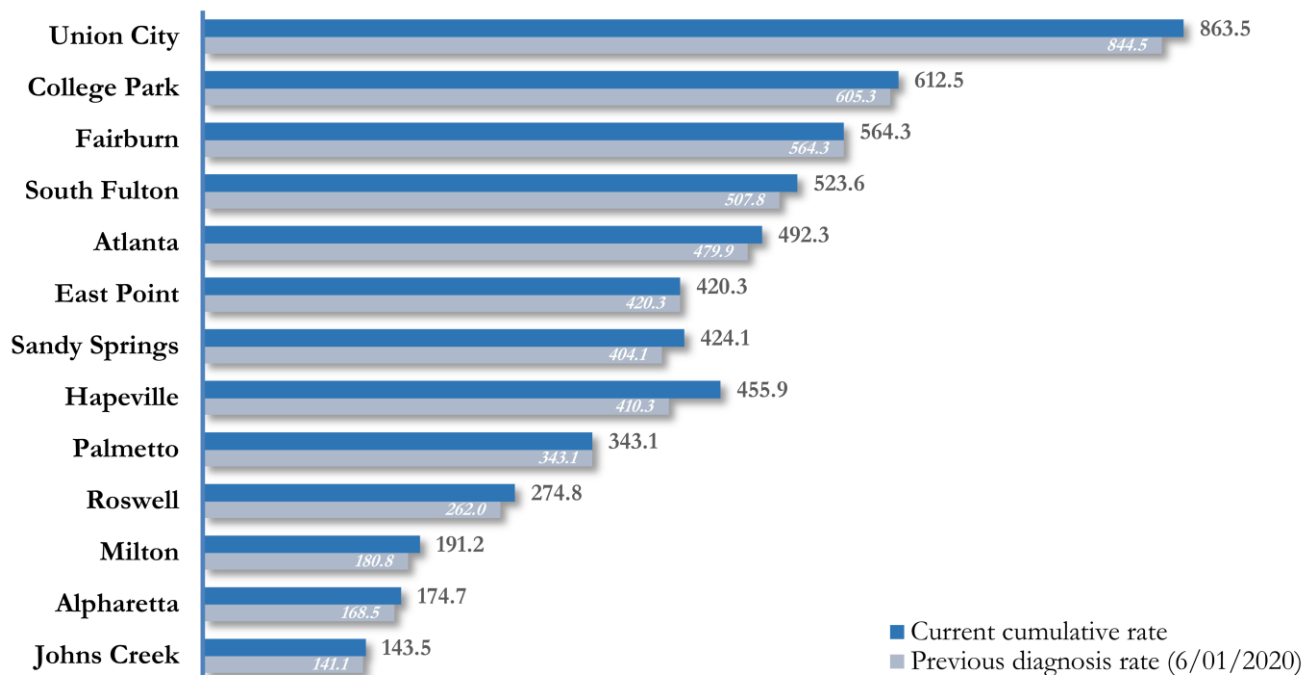


COVID-19 CASE COUNTS AND RATES BY CITY

	Prior Count (6/01/2020)	Current Count (6/03/20)	Percent (County Total)	% Change from prior Count	Cumulative Rate (Per 100,000 pop.)	New Cases Diagnosed in Past 14 Days <sup>1</sup> (Count)
Atlanta	2117	2172	46.5%	2.6%	492.3	250
South Fulton	483	498	10.7%	3.1%	523.6	34
Sandy Springs	426	447	9.6%	4.9%	424.1	64
Roswell	247	259	5.5%	4.9%	274.8	20
East Point	147	147	3.1%	0%	420.3	13
Johns Creek	118	120	2.6%	1.7%	143.5	<10
Union City	177	181	3.9%	2.3%	863.5	19
Alpharetta	109	113	2.4%	3.7%	174.7	10
Milton	69	73	1.6%	5.8%	191.2	<10
Fairburn	83	83	1.8%	0%	564.3	<10
College Park	84	85	1.8%	1.2%	612.5	<10
Palmetto	15	15	0.3%	0.0%	343.1	No new cases
Hapeville	27	30	0.6%	11.1%	455.9	<10
Mountain Park	0	0	0.0%	-	-	No new cases
Unknown	438	450	9.6%	-	-	-

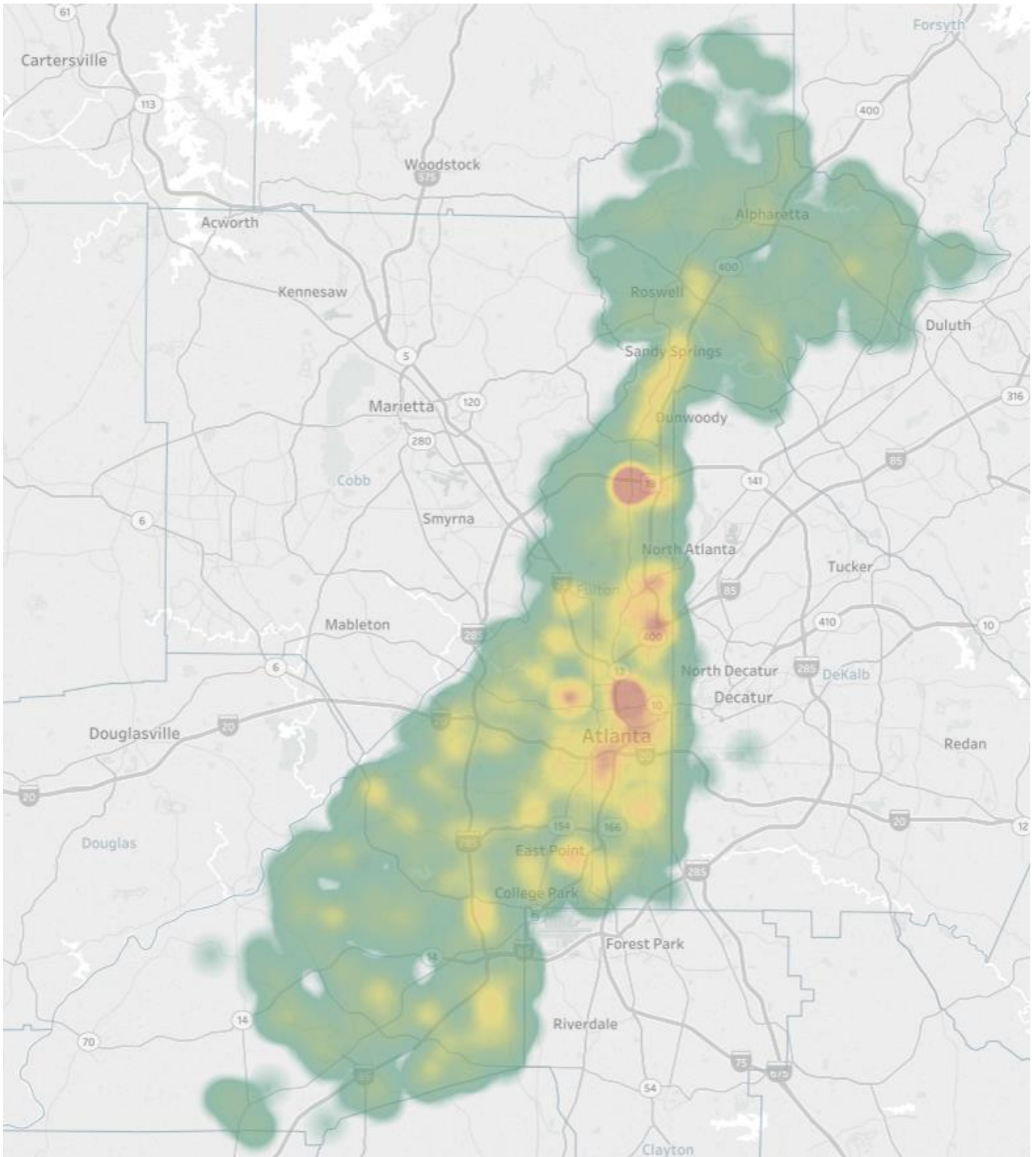
Population estimates from US Census Bureau used to calculate diagnoses rates. \*\* Data cleaning (either during case interviews or address geo-coding) may lead to reassignment of few cases from one territory to another based on their corrected addresses. These may appear as "decreases" when compared to the previous day's count. These do not reflect errors in the data collection or analysis process but only reflect the minor day-to-day fluctuations in case counts that arise in an evolving public health database like COVID's. **Note:** Sharp increases in territorial COVID case counts often reflect new cases diagnosed at long term care facilities located in those territories during facility-wide /mass screening events. <sup>1</sup>**New cases:** Cases diagnosed in the past 2 weeks only (using the date of sample collection). **All data reported are preliminary and subject to change.**

Fig. 3. COVID-19 Diagnoses Rate in Fulton County by City (6/03/20)



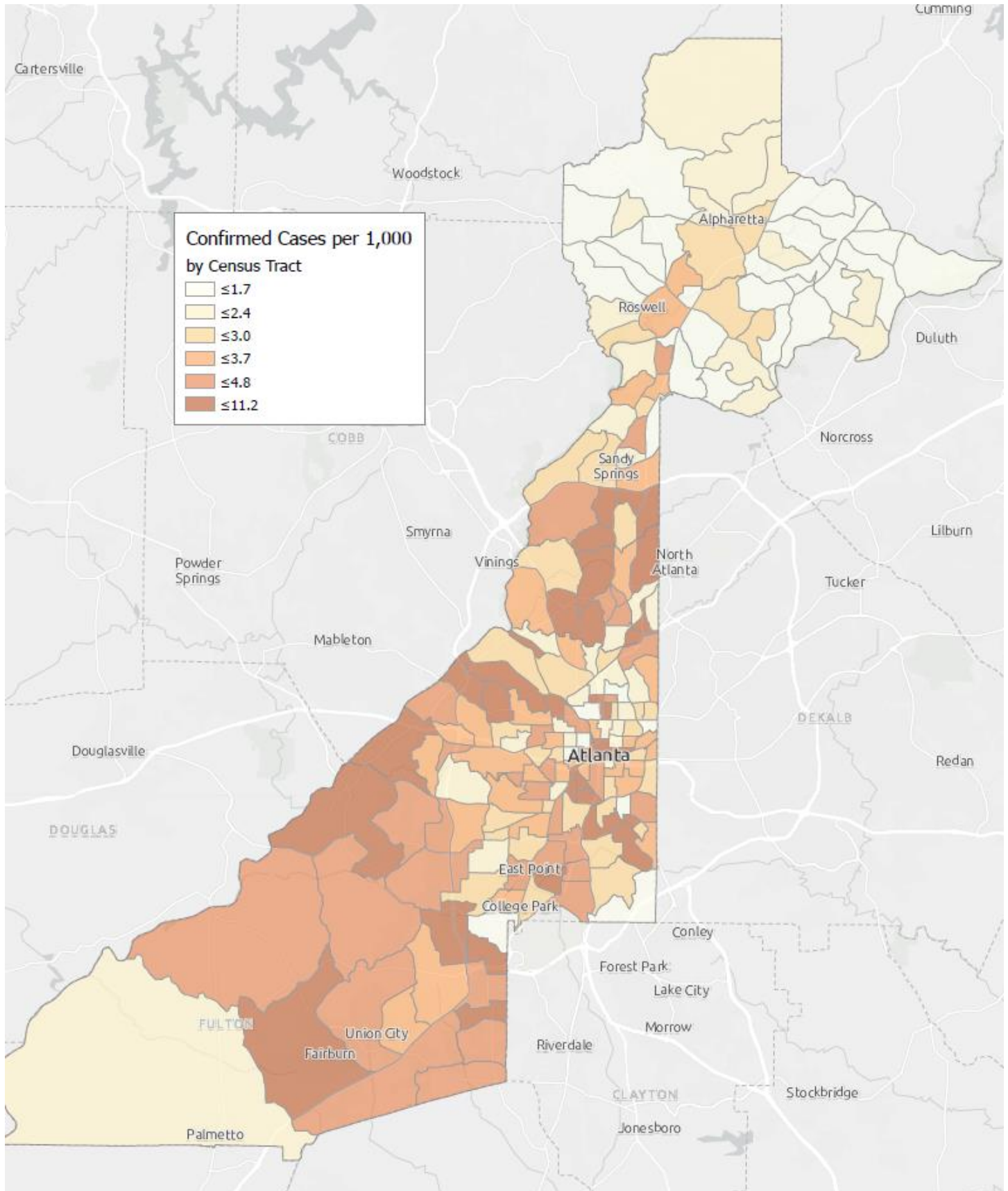
\*Rates shown are per 100,000 persons | **Note:** Mass testing in specific locations (e.g. long term care facilities) may cause sharp increases in the cumulative rate of COVID-19 diagnosis in those territories. All data shown are preliminary and are subject to change as testing results get updated.

Fig. 4. Density Map of COVID-19 Cases in Fulton County (6/03/20)



NB. Data used excludes the outbreak-related cases diagnosed at long-term care facilities and reflects the current geographical distribution of COVID19 diagnoses in the general Fulton County community.

Fig. 5. COVI-19 Diagnosis Rates in Fulton County by Census Tract (6/03/2020)



\*Rates shown are per 1,000 populations.

NB. Data used excludes the outbreak-related cases diagnosed at long-term care facilities and reflects the current geographical distribution of COVID19 diagnoses in

## COVID-19 CASE COUNTS BY ZIP CODE

ZIP code	Prior Count (6/01/2020)	Current Count (6/03/20)	Percent (County Total)	% Change from Prior ZIP-level Count	New Cases Diagnosed in Past 14 Days <sup>1</sup> (Count)
30331	357	363	7.8%	1.7%	14
30318	288	296	6.3%	2.8%	45
30349	260	269	5.8%	3.5%	24
30213	187	189	4.0%	1.1%	15
30315	147	149	3.2%	1.4%	<10
30344	142	142	3.0%	<0.1%	13
30311	129	132	2.8%	2.3%	<10
30342	225	231	4.9%	2.7%	32
30314	182	186	4.0%	2.2%	25
30310	162	169	3.6%	4.3%	50
30308	80	80	1.7%	<0.1%	No new cases
30022	105	112	2.4%	6.7%	14
30327	109	108	2.3%	<0.1%	20
30004	95	100	2.1%	5.3%	<10
30309	137	135	2.9%	<0.1%	<10
30076	93	94	2.0%	1.1%	<10
30291	202	206	4.4%	2.0%	19
30350	95	102	2.2%	7.4%	15
30075	140	143	3.1%	2.1%	<10
30328	104	112	2.4%	7.7%	15
30316	42	43	0.9%	2.4%	<10
30312	217	217	4.6%	<0.1%	<10
30005	47	47	1.0%	<0.1%	<10
30305	111	126	2.7%	13.5%	36
30306	43	44	0.9%	2.3%	No new cases
30324	111	120	2.6%	8.1%	24
30337	77	79	1.7%	2.6%	<10
30009	48	52	1.1%	8.3%	<10
30313	38	39	0.8%	2.6%	<10
30326	28	29	0.6%	3.6%	<10
30097	40	44	0.9%	10.0%	<10
30354	47	51	1.1%	8.5%	11
30303	31	32	0.7%	3.2%	<10
30339	13	13	0.3%	<0.1%	No new cases
30268	20	20	0.4%	<0.1%	No new cases
30307	18	19	0.4%	5.6%	<10
30319	26	29	0.6%	11.5%	<10
30336	17	20	0.4%	17.6%	<10
30296	10	10	0.2%	<0.1%	No new cases
30363	<10	<10	0.2%	-	<10
30301	<10	<10	<0.1%	-	No new cases
30345	<10	<10	0.2%	-	<10
31131	<10	<10	<0.1%	-	No new cases
30023	<10	<10	<0.1%	-	<10
30080	<10	<10	<0.1%	-	No new cases
30135	<10	<10	<0.1%	-	No new cases
30138	<10	<10	<0.1%	-	No new cases
30139	-	-	-	-	No new cases
30321	<10	<10	<0.1%	-	<10
30340	<10	<10	0.2%	-	<10
30341	11	11	0.2%	<0.1%	No new cases

30358	<10	<10	<0.1%	-	No new cases
30374	18	18	0.4%	<0.1%	No new cases
30606	<10	<10	<0.1%	-	No new cases
31150	<10	<10	<0.1%	-	No new cases
30024	<10	<10	<0.1%	-	No new cases
30098	-	-	-	-	No new cases
30334	<10	<10	<0.1%	-	No new cases
30338	<10	<10	<0.1%	-	<10
Unknown	245	246	5.3%	-	13

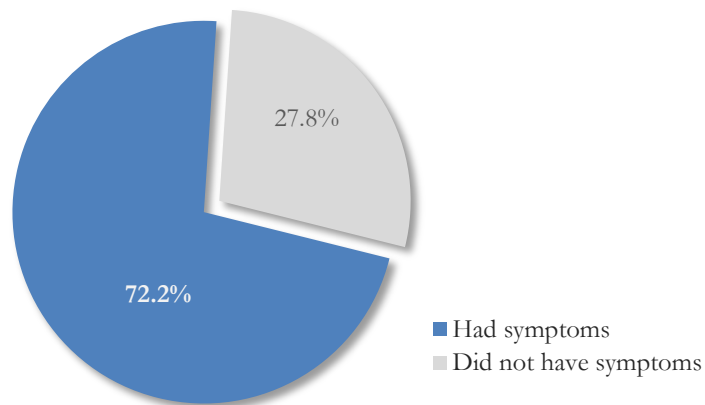
**\*\* Data cleaning (either during case interviews or address geo-coding) may lead to reassignment of few cases from one territory to another based on their corrected addresses. These may appear as "decreases" when compared to the previous day's count. These do not reflect errors in the data collection or analysis process but only reflect the minor day-to-day fluctuations in case counts that arise in an evolving public health database like COVID's. Note: Sharp increases in territorial COVID case counts often reflect new cases diagnosed at long term care facilities located in those territories during facility-wide/mass screening events. <sup>1</sup>New cases: Cases diagnosed in the past 2 weeks only (using the date of sample collection). All data reported are preliminary and subject to change.**

### REPORTING SYMPTOMS AMONG PERSONS DIAGNOSED WITH COVID-19 IN FULTON

People with COVID-19 have reported a wide range of symptoms ranging from mild symptoms to severe illness. Symptoms may appear 2-14 days after exposure to the virus. Symptoms reported include: cough, shortness of breath/difficulty breathing, fever, chills, repeated shaking with chills, muscle pain, headache, sore throat, new loss of taste or smell – Centers for Disease Control and Prevention (CDC)

<https://www.cdc.gov/coronavirus/2019-ncov/symptoms-testing/symptoms.html>

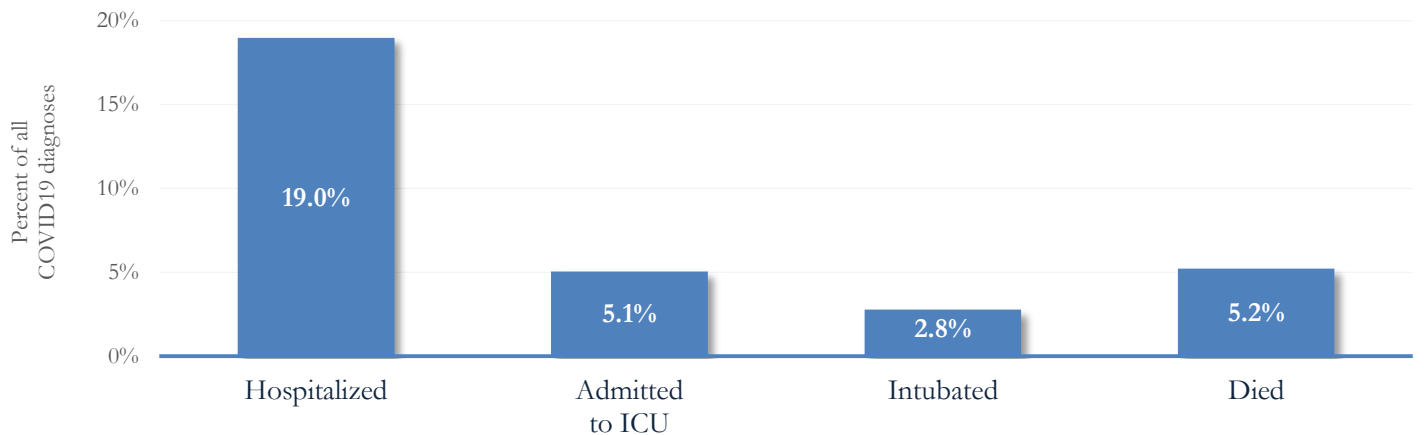
Fig. 6. Proportion reporting Symptoms in Fulton County (6/03/20)



\*\*\*COVID-19 cases who have been case interviewed or had medical charts reviewed as at 6/03/20 only\*\*\*

### COVID-19 HOSPITALIZATIONS, ICU ADMISSIONS AND DEATHS IN FULTON

Fig. 7. Hospitalizations, ICU Admissions and Deaths among COVID-19 Diagnoses in Fulton County (6/03/20)



## DEMOGRAPHIC DISTRIBUTIONS – COVID 19 DIAGNOSES AND DEATHS IN FULTON

Distribution of COVID-19 diagnoses in Fulton County by Fulton Region – 6/03/20

	North Fulton Cities <sup>1</sup> Count (%)	Atlanta Count (%)	South Fulton Cities <sup>2</sup> Count (%)	Unknown City Count (%)	All Fulton Count (%)
<b>Total COVID-19 cases</b>	1012	2172	1039	450	4673
<b>Gender:</b> Female	489 (48.3%)	1056 (48.6%)	589 (56.7%)	239 (53.1%)	2373 (50.8%)
Male	513 (50.7%)	1078 (49.6%)	434 (41.8%)	202 (44.9%)	2227 (47.7%)
Unknown	10 (1.0%)	38 (1.7%)	16 (1.5%)	<10	73 (1.6%)
<b>Age:</b> <15	23 (2.3%)	20 (0.9%)	11 (1.1%)	10 (2.2%)	64 (1.4%)
15-24	108 (10.7%)	134 (6.2%)	56 (5.4%)	27 (6.0%)	325 (7.0%)
25-34	148 (14.6%)	342 (15.7%)	111 (10.7%)	87 (19.3%)	688 (14.7%)
35-44	173 (17.1%)	321 (14.8%)	157 (15.1%)	73 (16.2%)	724 (15.5%)
45-54	186 (18.4%)	307 (14.1%)	187 (18.0%)	72 (16.0%)	752 (16.1%)
55-64	167 (16.5%)	332 (15.3%)	194 (18.7%)	64 (14.2%)	757 (16.2%)
65-74	102 (10.1%)	333 (15.3%)	152 (14.6%)	34 (7.6%)	621 (13.3%)
≥75	103 (10.2%)	366 (16.9%)	168 (16.2%)	78 (17.3%)	715 (15.3%)
Unknown	<10	17 (0.8%)	<10	<10	27 (0.6%)
<b>Race:</b> Asian, NH	47 (4.6%)	21 (1.0%)	<10	12 (2.7%)	81 (1.7%)
Black, NH	139 (13.7%)	1149 (52.9%)	741 (71.3%)	173 (38.4%)	2202 (47.1%)
White, NH	346 (34.2%)	344 (15.8%)	76 (7.3%)	77 (17.1%)	843 (18.0%)
Hispanic	153 (15.1%)	75 (3.5%)	40 (3.8%)	37 (8.2%)	305 (6.5%)
Other, NH	28 (2.8%)	38 (1.7%)	14 (1.3%)	13 (2.9%)	93 (2.0%)
Unknown	299 (29.5%)	545 (25.1%)	167 (16.1%)	138 (30.7%)	1149 (24.6%)

<sup>1</sup>Includes all Fulton County cities north of Atlanta metro (Alpharetta, Milton, Johns Creek, Roswell, Sandy Springs, Mountain Park) <sup>2</sup>Includes all cities south of Atlanta (College Park, Chattahoochee Hills, East Point, Hapeville, Palmetto, South Fulton, Fairburn, Union City). **Note:** All data reported are preliminary and subject to change.

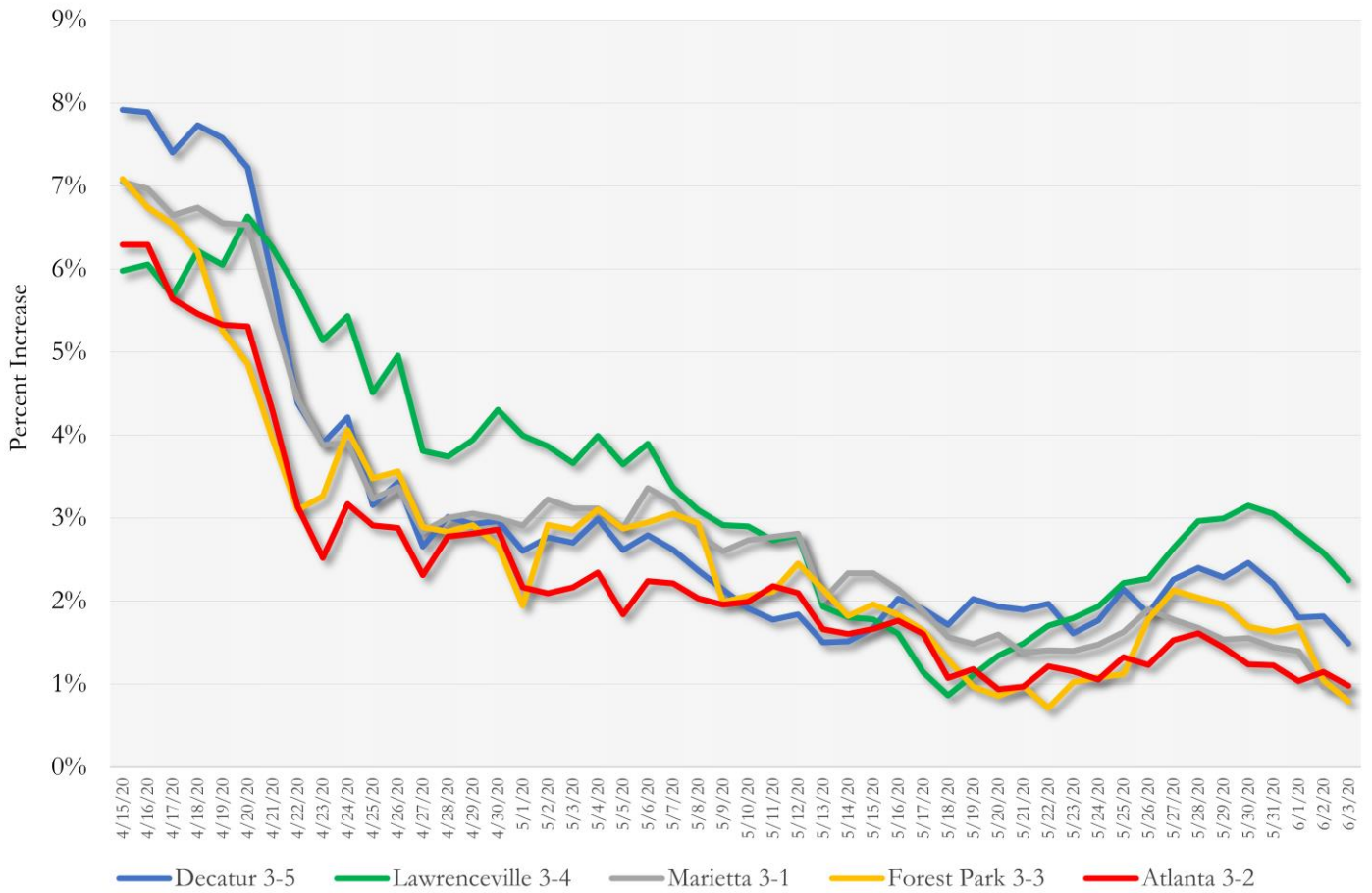
Distribution of COVID-19 Deaths in Fulton County by Fulton Region – 6/03/20

	North Fulton Cities <sup>1</sup> Count (%)	Atlanta Count (%)	South Fulton Cities <sup>2</sup> Count (%)	Unknown City Count (%)	All Fulton Count (%)
<b>Total COVID-19 deaths</b>	32	112	78	22	244
<b>Gender:</b> Female	<10	44 (39.3%)	42 (53.8%)	14 (63.6%)	109 (44.7%)
Male	23 (71.9%)	68 (60.7%)	36 (46.2%)	<10	135 (55.3%)
Unknown	0	0	0	0	0
<b>Age:</b> <65	<10	18 (16.1%)	22 (28.2%)	<10	47 (19.3%)
65-74	<10	30 (26.8%)	19 (24.4%)	<10	54 (22.1%)
75-84	<10	29 (25.9%)	16 (20.5%)	<10	60 (24.6%)
≥85	14 (43.8%)	35 (31.3%)	21 (26.9%)	13 (59.1%)	83 (34.0%)
Unknown	0	0	0	0	0
<b>Race:</b> Asian, NH	0	<10	0	0	<10
Black, NH	<10	94 (83.9%)	68 (87.2%)	11 (50.0%)	179 (73.4%)
White, NH	24 (75.0%)	13 (11.6%)	<10	11 (50.0%)	55 (22.5%)
Hispanic	<10	<10	<10	0	<10
Other, NH	0	<10	0	0	<10
Unknown	0	<10	<10	0	<10

<sup>1</sup>Includes all Fulton County cities north of Atlanta metro (Alpharetta, Milton, Johns Creek, Roswell, Sandy Springs, Mountain Park) <sup>2</sup>Includes all cities south of Atlanta (College Park, Chattahoochee Hills, East Point, Hapeville, Palmetto, South Fulton, Fairburn, Union City). **Note:** All data reported are preliminary and subject to change.

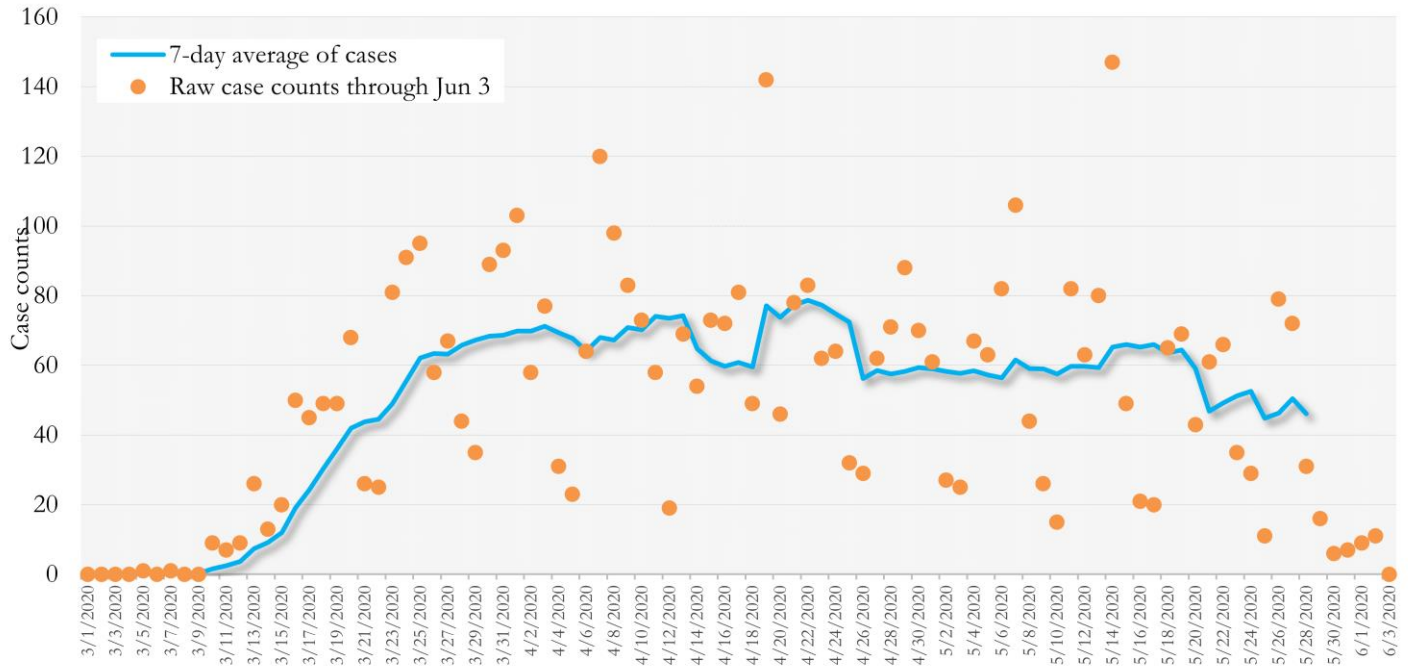
MORBIDITY AND MORTALITY TRENDS

Fig. 8. Daily Percent Increase for Atlanta Metro Districts  
(Averaged over 7 days)



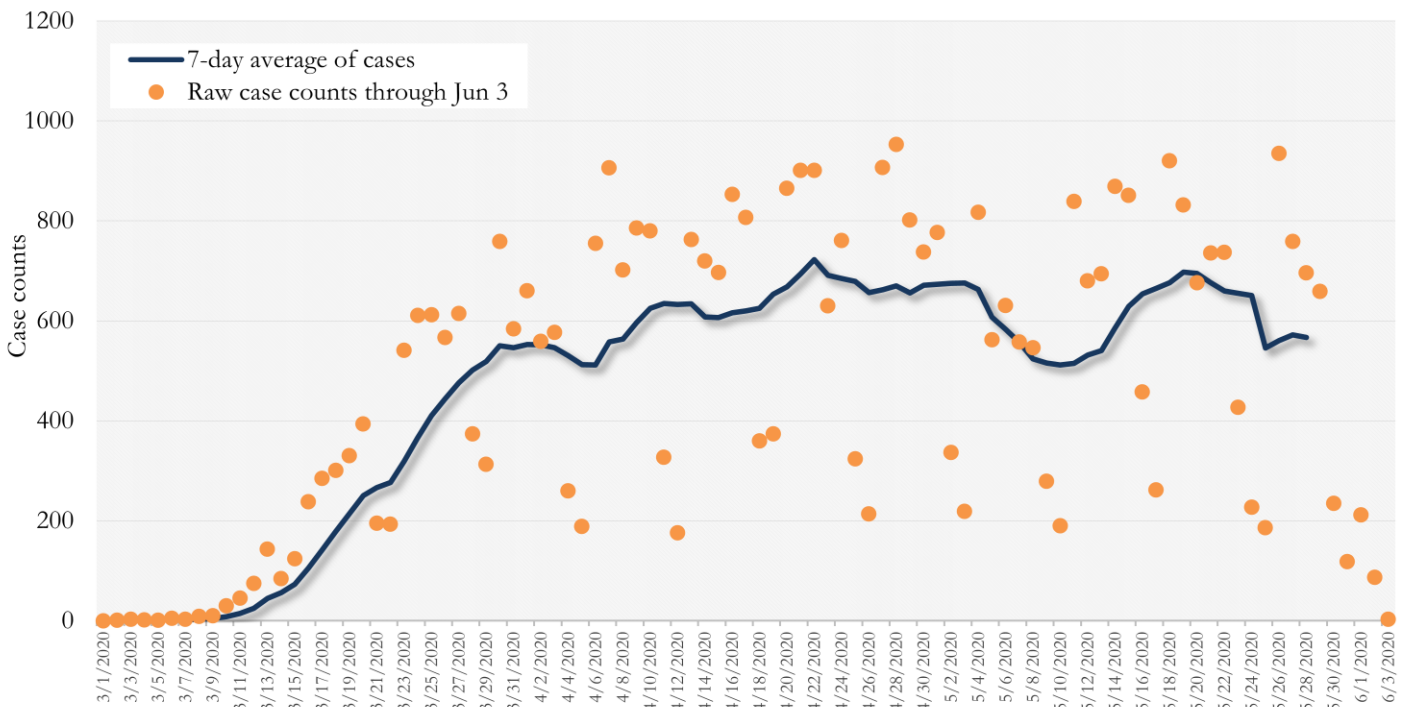


**Fig. 11. New COVID-19 Cases in Fulton County Daily (Averaged over 7 days)**  
 March 01, 2020 - May 28, 2020



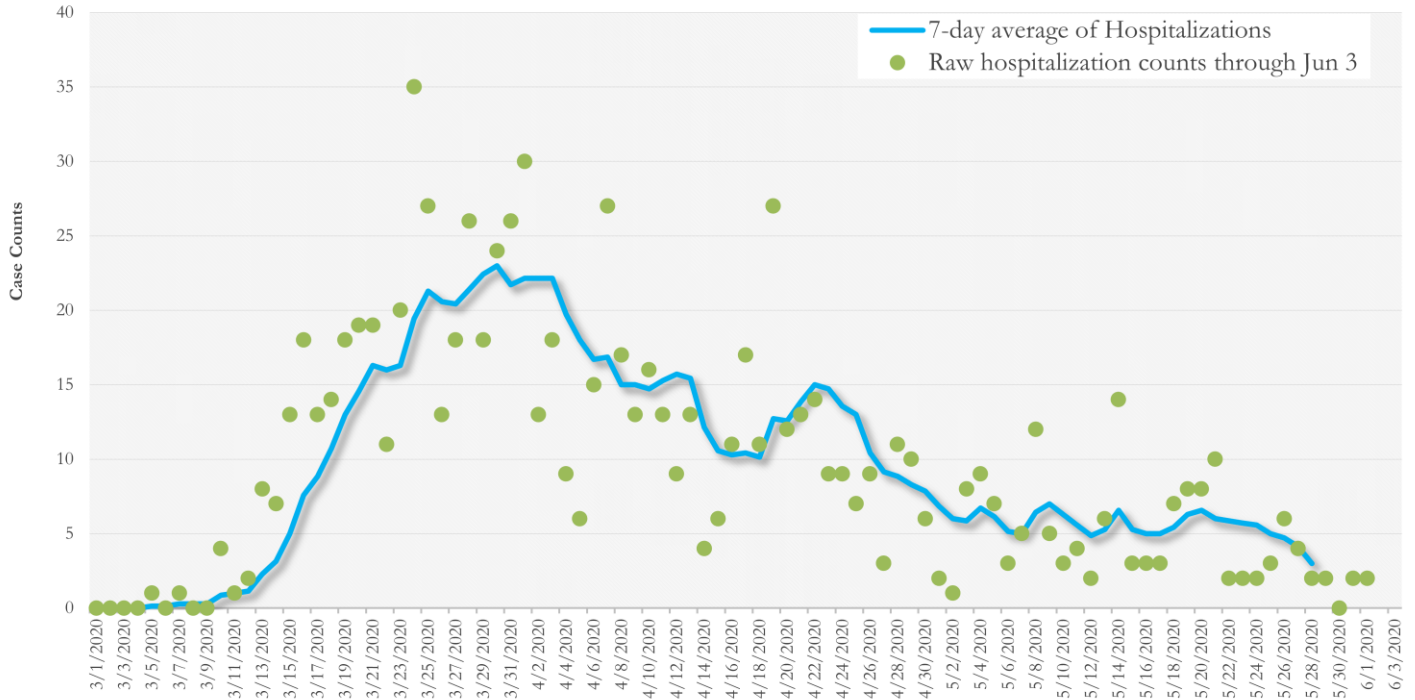
\*Date of collection of first positive sample used (report creation date used where sample collection date is missing).

**Fig. 10. New COVID-19 Cases in Georgia State Daily (Averaged over 7 days)**  
 March 01, 2020 - May 28, 2020



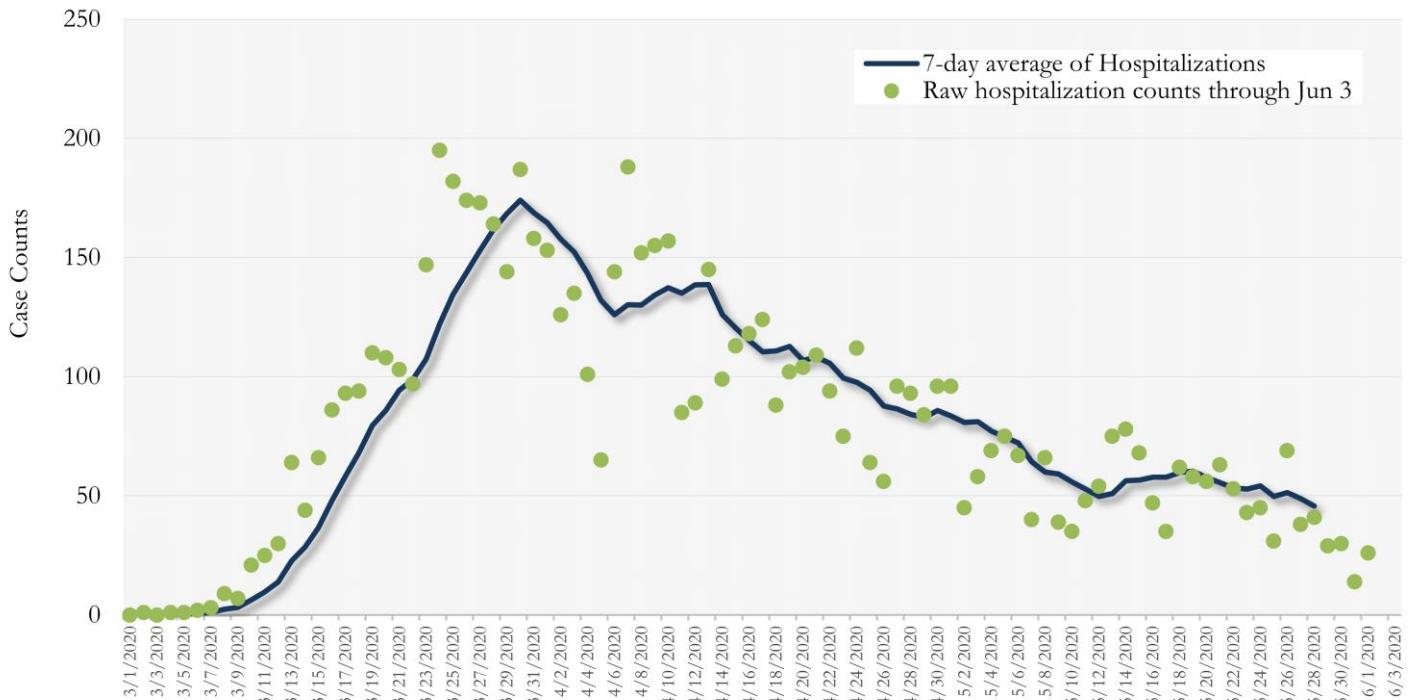
\*Date of collection of first positive sample used (report creation date used where sample collection date is missing).

**Fig. 11. COVID-19 Hospitalizations in Fulton County Daily (Averaged over 7 days)**  
 March 01, 2020 - May 28, 2020



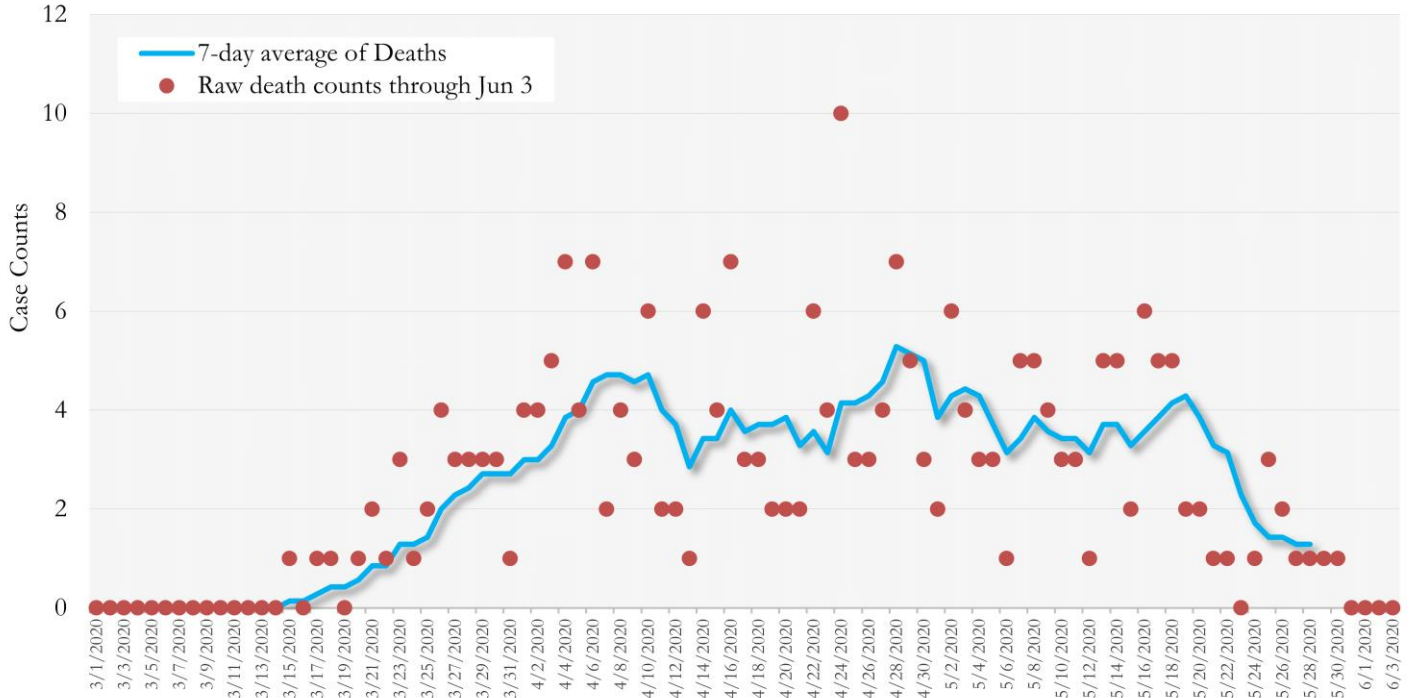
\*Date of collection of first positive sample used (report creation date used where sample collection date is missing).

**Fig. 12. COVID-19 Hospitalizations in Georgia State Daily (Averaged over 7 days)**  
 March 01, 2020 - May 28, 2020



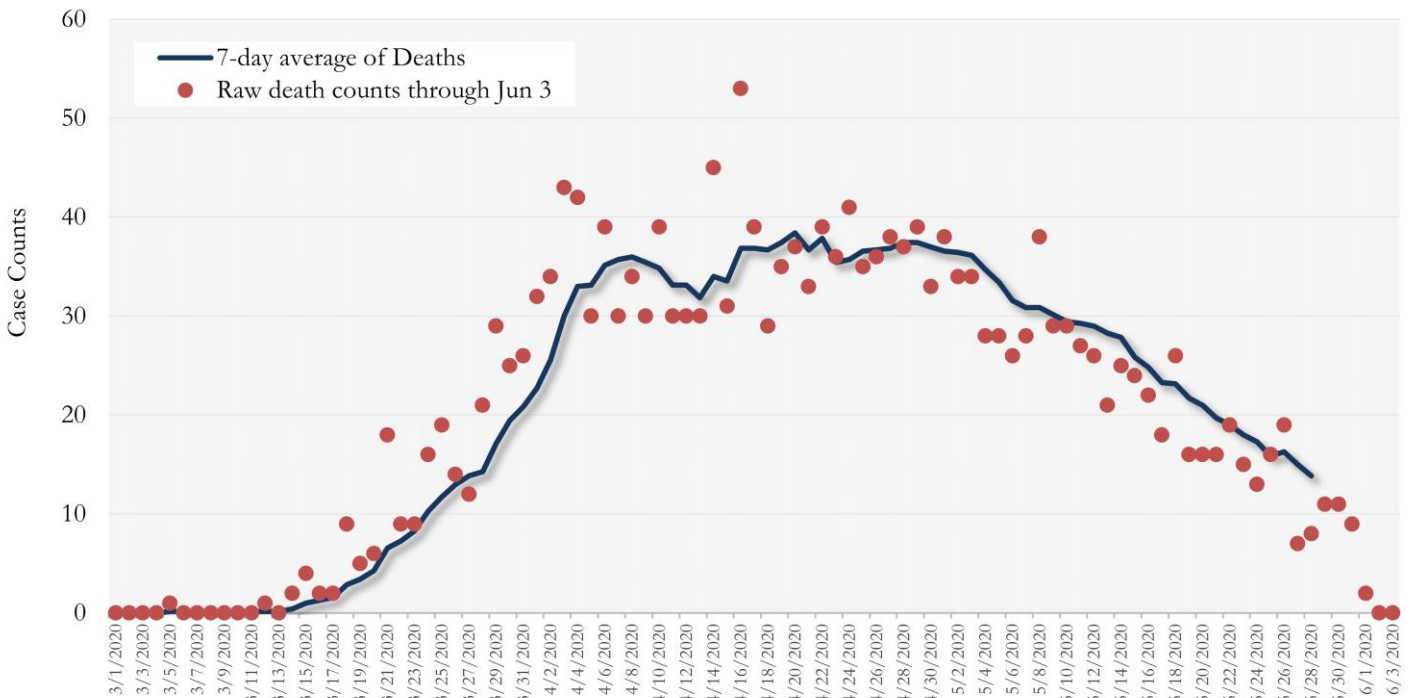
\*Date of collection of first positive sample used (report creation date used where sample collection date is missing).

**Fig. 13. COVID-19 Deaths in Fulton County Daily (Averaged over 7 days)**  
 March 01, 2020 - May 28, 2020



\*Reported date of death used.

**Fig. 14. COVID-19 Deaths in Fulton County Daily (Averaged over 7 days)**  
 March 01, 2020 - May 28, 2020

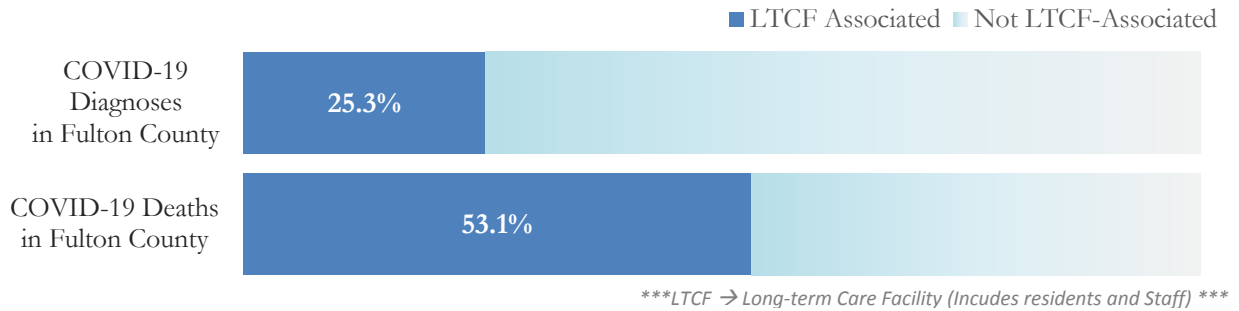


\*Reported date of death used.

## COVID-19 IN LONG-TERM CARE FACILITIES IN FULTON

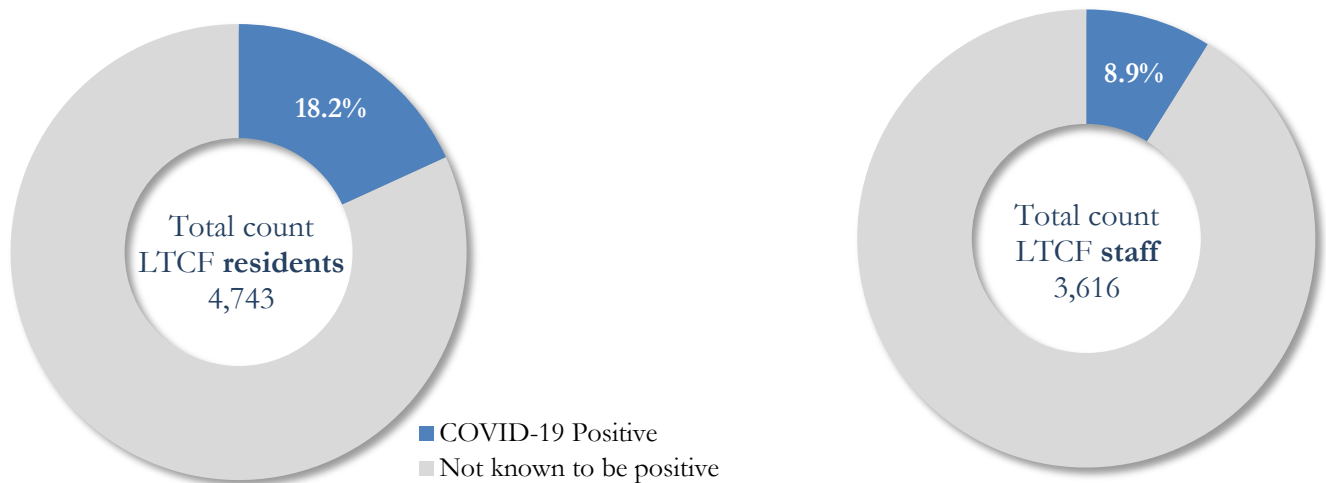
Older persons (aged 65 years and older) and persons who live in nursing homes or other long-term care facilities seem to be at higher risk for developing more serious complications from COVID-19. Extra precautions are recommended for individuals within this risk groups – Centers for Disease Control and Prevention (CDC 2020) <https://www.cdc.gov/coronavirus/2019-ncov/need-extra-precautions/people-at-higher-risk.html>

### COVID-19 Diagnoses and Deaths in Fulton County Associated with Long-Term Care Facilities (6/03/20)



**COVID-19 POSITIVITY:** COVID-19 testing is currently being provided at various long-term care facilities in Fulton County through the efforts of the Board of Health and the National Guard. See <https://dch.georgia.gov/> for a line listing of COVID-19 cases at all facilities in Georgia.

### COVID-19 Positivity at 45 reporting Long-Term Care Facilities (LTCF) in Fulton County (6/03/20)



### COVID-19 Cases, Hospitalizations, and Deaths among reporting Long-Term Care Facilities in Fulton County (6/03/20)

	LTCF Residents (n=4,743)			LTCF Staff (n=3,616)		
	Cases	Hospitalizations	Deaths	Cases	Hospitalizations	Deaths
<b>Average</b> (count per facility) <sup>1</sup>	19	4	2	7	<1	<0.1
<b>Median</b> (count per facility) <sup>1</sup>	2	3	1	4	0	0
<b>Lowest counts</b>	0	0	0	0	0	0
<b>Highest counts</b>	126	31	21	40	6	1
<b>Total Count</b>	<b>862 (18.2%)<sup>a</sup></b>	<b>169 (19.6%)<sup>b</sup></b>	<b>11 (12.9%)<sup>b</sup></b>	<b>322 (8.9%)<sup>a</sup></b>	<b>16 (5.0%)<sup>b</sup></b>	<b>1 (0.3%)<sup>b</sup></b>

<sup>a</sup> Percentage shown reflects proportion of total residents/staff tested who were positive (i.e. COVID-19 Positivity). | <sup>b</sup> Percentages shown are proportions of persons residents/staff diagnosed with COVID-19 who were hospitalized or died after diagnoses.