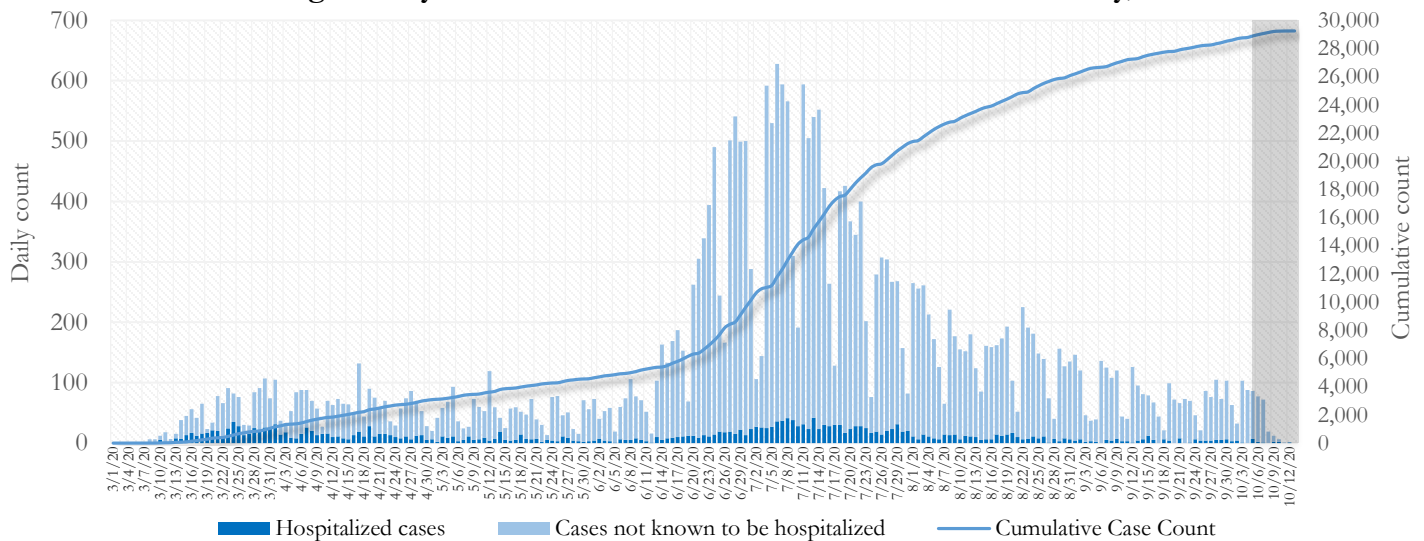


## SUMMARY

- As of October 13, 2020, Fulton County has recorded **29,253 cases of the 2019 novel coronavirus (COVID-19)** and **594 confirmed COVID-19 deaths**. 75 deaths are currently being reviewed by GA DPH to confirm cause of death.
- Of **1,078 new diagnoses** made between September 22 and October 6, the central portion of the county (Atlanta metro) accounted for 40% while the northern and southern parts accounted for 37% and 20% respectively.
- By city, new COVID-19 case rates range from 69.3 per 100,000 persons (John’s Creek) to 274.5 per 100,000 persons (Palmetto). [**Fulton County Diagnoses Rates (per 100,000 persons): Cumulative – 2749.5; Incidence –101.3**]. See map showing incident case rate by ZIP code on Pg.17.
- Among all persons diagnosed with COVID-19 in Fulton County since June 1, **6.2% required hospitalization and 1.3% died**.
- Of all testing done in Fulton County between September 28 and October 11, **the percent positivity rate was 3.5%**.

**Fig 1. Daily and Cumulative COVID-19 cases in Fulton County, GA**



\*Counts shown reflect the number of confirmed cases as of 9:00 am on 10/13/20 using the date of first positive sample collection. Where date of sample collection was not available or missing, the date of report creation in GA SENDSS was used instead. **Note:** Delays in data reporting may cause changes in data counts, particularly in the shaded portion. Data throughout this report are preliminary and subject to ongoing data cleaning processes, and thus are subject to change.


## DISTRIBUTION OF COVID-19 CASES BY REGION

**New cases:** 40% of the new COVID-19 cases in the past 2 weeks occurred in Atlanta while 37% and 20% occurred in the Northern and Southern regions of the county respectively.

Fulton Region	% Cumulative count	% New cases*
Atlanta	43.7%	40.3%
North <sup>1</sup>	28.4%	37.2%
South <sup>2</sup>	20.3%	19.5%
Unincorporated/Unknown	7.5%	3.1%

<sup>1</sup>Includes all Fulton County cities north of Atlanta metro (Alpharetta, Milton, Johns Creek, Roswell, Sandy Springs, Mountain Park) |<sup>2</sup>Includes all cities south of Atlanta (College Park, Chattahoochee Hills, East Point, Hapeville, Palmetto, South Fulton, Fairburn, and Union City) \***New cases:** Cases diagnosed in the past 2 weeks only (between 9/22/20 – 10/6/20).

**In the past two weeks (9/22-10/6), there were fewer new cases of COVID-19 in Fulton County than the previous two weeks (9/8-9/21).**



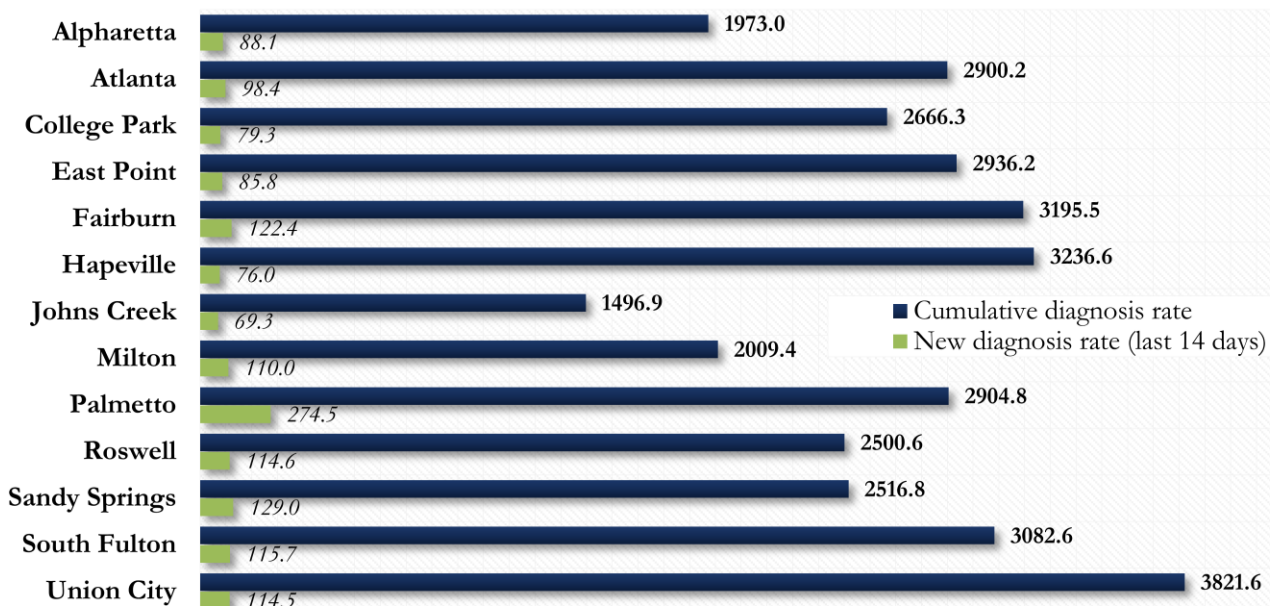
\*Delayed a week to account for testing results turnaround time.

## COVID-19 CASE COUNTS AND RATES BY CITY

	Prior (10/9/20)	Current Total (10/13/20)			New Cases (Period: 9/8/20 – 10/6/20) <sup>1</sup>			
	Count	Count	%	Cum. Rate <sup>2</sup>	1 <sup>st</sup> 14 d. (9/8–9/21)	Last 14 d. (9/22–10/6)	% change <sup>3</sup>	Rate <sup>4</sup> (Last 14 d).
Alpharetta	1249	1276	4.4%	1973.0	90	57	↓ 36.7%	88.1
Atlanta	12494	12795	43.7%	2900.2	468	434	↓ 7.3%	98.4
Chattahoochee Hills	1	1	0.0%	-	0	0	-	0.0
College Park	362	370	1.3%	2666.3	10	11	↑ 10.0%	79.3
East Point	1005	1027	3.5%	2936.2	24	30	↑ 25.0%	85.8
Fairburn	460	470	1.6%	3195.5	13	18	↑ 38.5%	122.4
Hapeville	208	213	0.7%	3236.6	<10	<10	↑ 25.0%	76.0
Johns Creek	1223	1252	4.3%	1496.9	79	58	↓ 26.6%	69.3
Milton	760	767	2.6%	2009.4	58	42	↓ 27.6%	110.0
Mountain Park	6	6	0.0%	960.0	0	0	-	-
Palmetto	126	127	0.4%	2904.8	<10	12	↑ 200.0%	274.5
Roswell	2296	2357	8.1%	2500.6	151	108	↓ 28.5%	114.6
Sandy Springs	2600	2653	9.1%	2516.8	117	136	↑ 16.2%	129.0
South Fulton	2861	2932	10.0%	3082.6	98	110	↑ 12.2%	115.7
Union City	788	801	2.7%	3821.6	29	24	↓ 17.2%	114.5
Unknown	2814	2206	7.5%	-	42	32	-	-

<sup>1</sup>**New cases:** Cases diagnosed in most recent 28 days (based on reported dates of positive sample collection). To allow for lag in reporting results of new diagnoses from samples collected in the most recent week, data used for incident diagnoses analyses were moved back by one week. <sup>2</sup>**Cumulative diagnosis rate:** Population estimates from US Census Bureau used to calculate cumulative diagnoses rate. All rates shown are per 100,000 persons. <sup>3</sup>**% change:** These reflect the percentage increase or decrease in new diagnoses between the 14 days preceding the most recent 7 days and the 14 days preceding that. Changes in cities with less than 10 cases in both 2 week intervals are not reported. <sup>4</sup>**(Incidence) Rate:** Rate of new diagnoses in the last 14 day period preceding the immediate past week. **\*\*Data cleaning** (either during case interviews or address geo-coding) may lead to reassignment of few cases from one territory to another based on their corrected addresses. These may appear as “decreases” when compared to the previous day’s count. These do not reflect errors in the data collection or analysis process but only reflect the minor day-to-day fluctuations in case counts that arise in an evolving public health database like COVID’s. **Note: All data reported are preliminary and subject to change.**

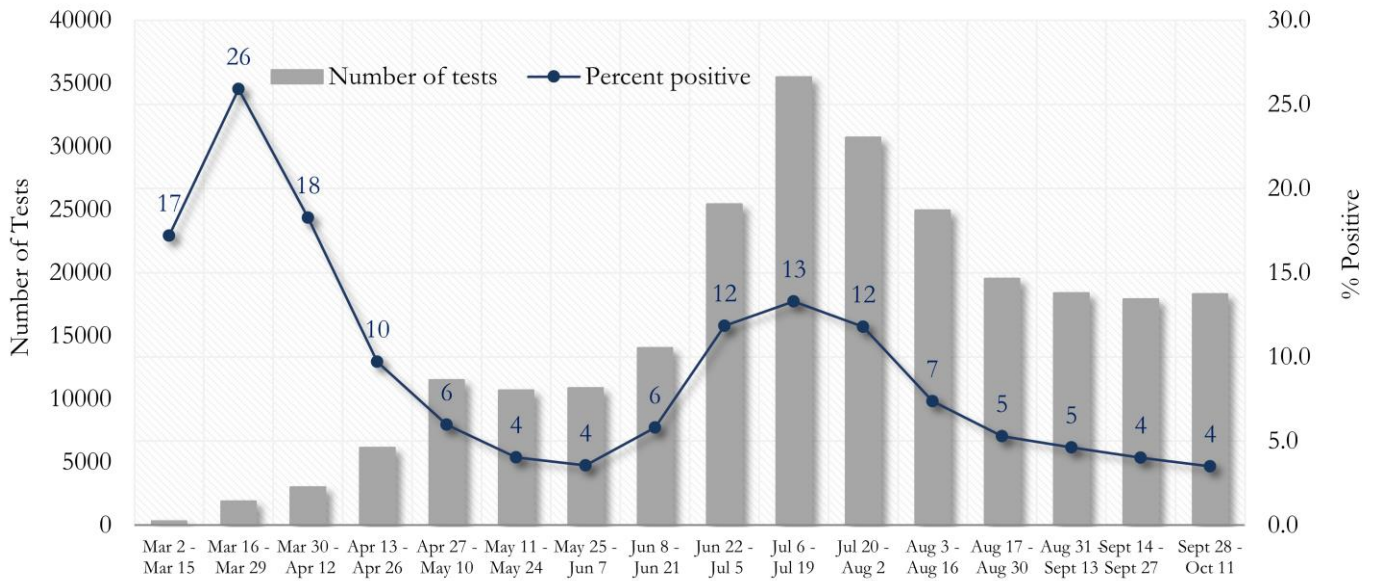
Fig. 2. Incident &amp; Cumulative Diagnoses Rates for COVID-19 by City



\*Rates shown are per 100,000 persons | **Note:** Mass testing in specific locations (e.g. long term care facilities) may cause sharp increases in the cumulative rate of COVID-19 diagnosis in those territories. All data shown are preliminary and are subject to change as testing results get updated.

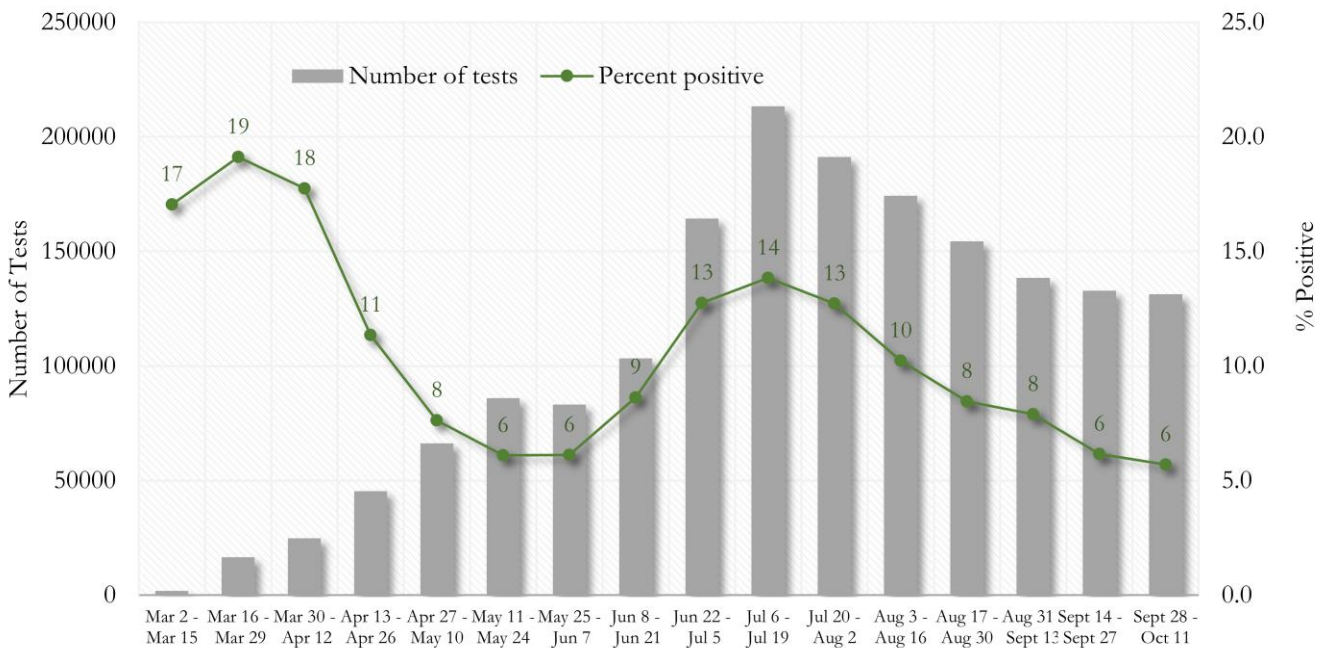
**COVID-19 TESTING AND POSITIVITY IN FULTON COUNTY AND GEORGIA**

**Fig. 3. Trends in Positive COVID-19 Tests in Fulton County by 14-day Periods**



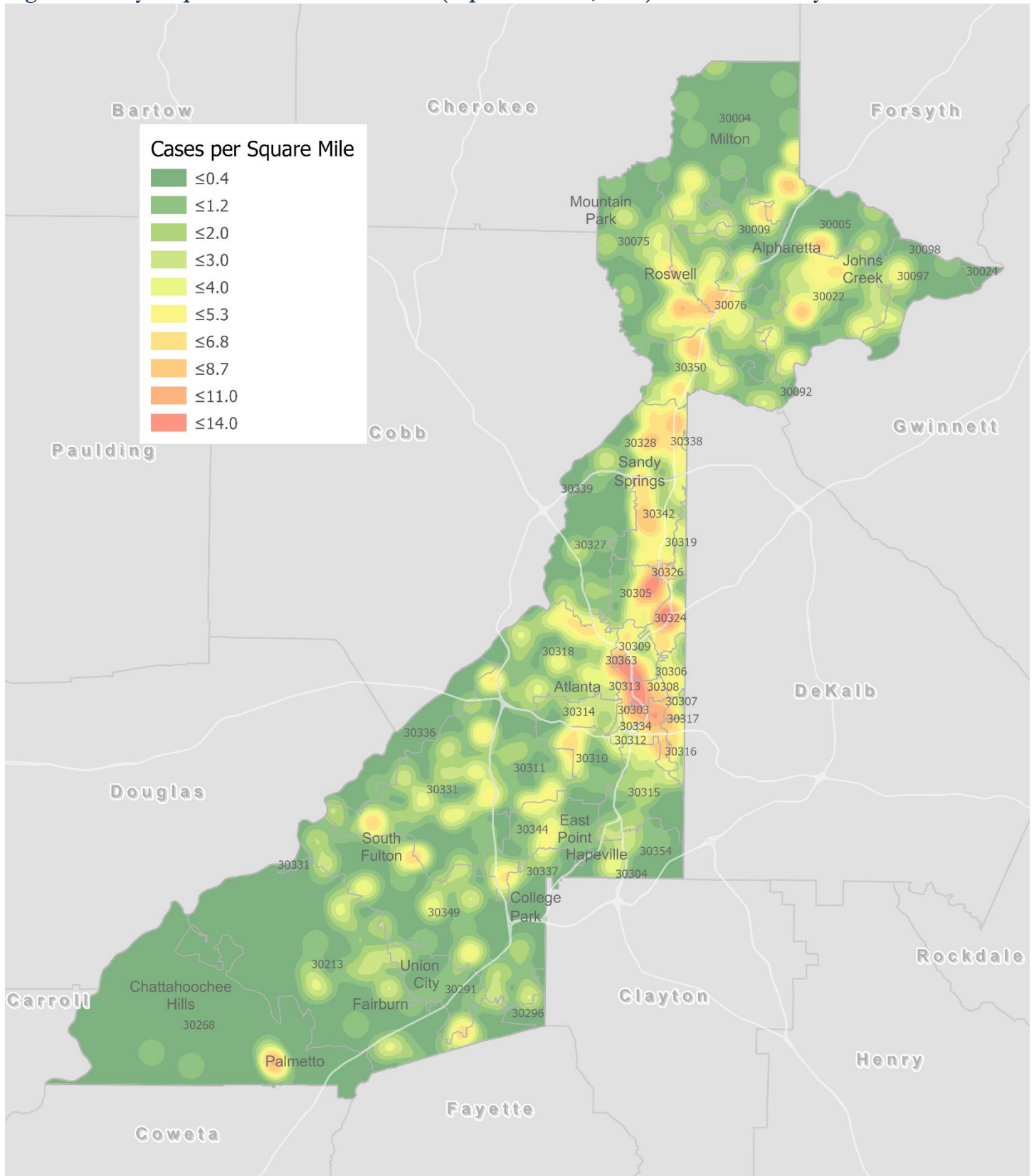
\*Data on Polymerase Chain Reaction (PCR) tests only included.

**Fig. 4. Trends in Positive COVID-19 Tests in Georgia by 14-day Periods**



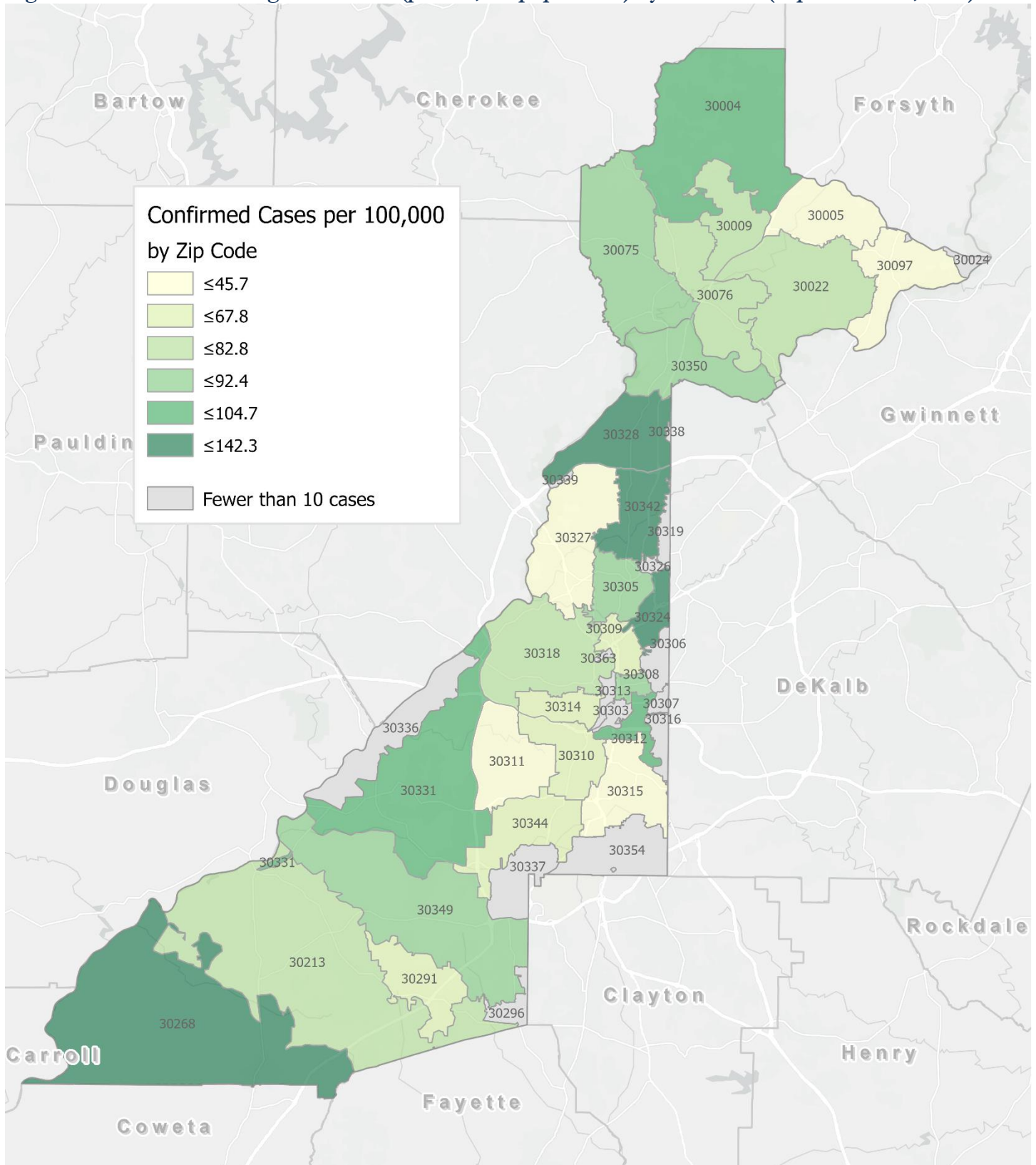
\*Data on Polymerase Chain Reaction (PCR) tests only included.

Fig. 5. Density Map – New COVID 19 Cases (Sept 22 – Oct 6, 2020) in Fulton County



**New COVID-19 cases:** Cases diagnosed in most recent 14 days (based on reported dates of positive sample collection). To allow for lag in reporting results of positive cases from samples collected in the immediate past 7 days, data used for incident diagnoses analyses are moved back by one week. Map reflects new COVID-19 cases diagnosed between Sept 22<sup>nd</sup> and Oct 6<sup>th</sup>, 2020 across Fulton County, excluding LTCF cases.

Fig. 6. New COVID-19 Diagnoses Rates (per 100,000 population) by ZIP Code (Sept 22– Oct 6, 2020)



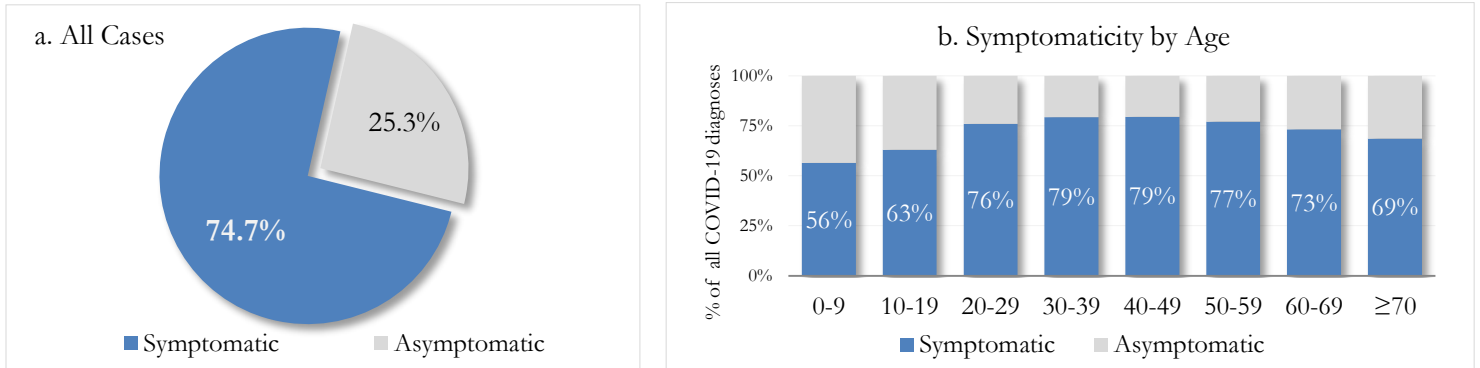
\*Rates shown are per 100,000 populations.

**New COVID-19 cases:** Cases diagnosed in most recent 14 days (based on reported dates of positive sample collection). To allow for lag in reporting results of positive cases from samples collected in the immediate past 7 days, data used for incident diagnoses analyses are moved back by one week. Data used excludes outbreak-related cases at long-term care facilities and map shown reflects only the new non-LTCF cases diagnosed between the dates shown in map title. See page 17 for zip code break down table.

## REPORTING SYMPTOMS AMONG PERSONS WITH COVID-19 IN FULTON

People with COVID-19 have reported a wide range of symptoms ranging from mild symptoms to severe illness. Symptoms may appear 2-14 days after exposure to the virus. Symptoms reported include: cough, shortness of breath/difficulty breathing, fever, chills, muscle pain, headache, sore throat, congestion, nausea or vomiting, diarrhea, or new loss of taste or smell – Centers for Disease Control and Prevention (CDC)  
<https://www.cdc.gov/coronavirus/2019-ncov/symptoms-testing/symptoms.html>

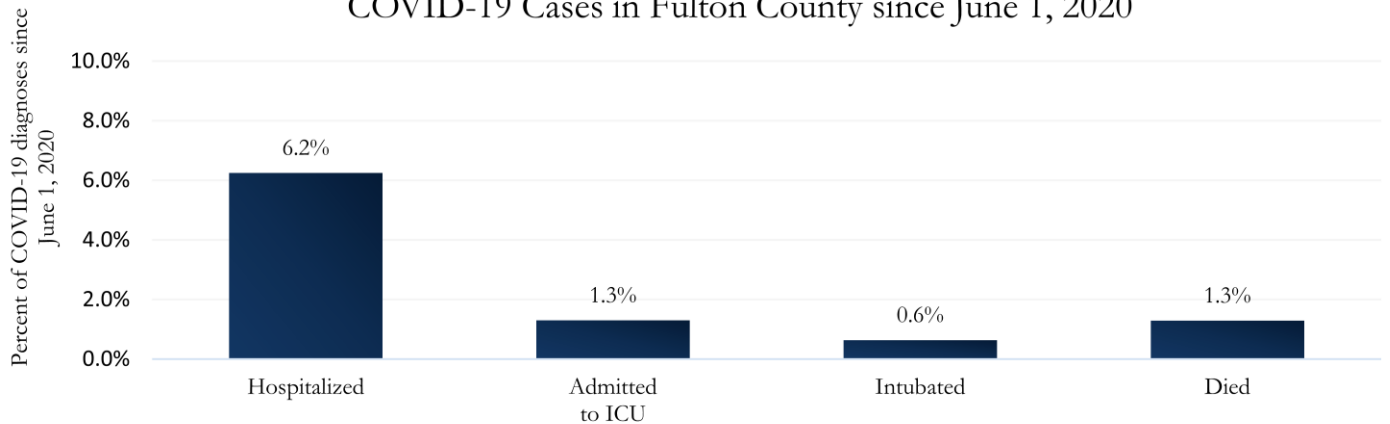
Fig. 7a & b. Total Proportion Reporting Symptoms in Fulton County



\*\*\*COVID-19 cases who have been case interviewed or had medical charts reviewed as of 10/13/20 only. n = 19,184\*\*\*

## COVID-19 HOSPITALIZATIONS, ICU ADMISSIONS AND DEATHS IN FULTON

Fig. 8. Hospitalizations, ICU Admissions, Intubations, and Deaths among COVID-19 Cases in Fulton County since June 1, 2020



## DEMOGRAPHIC DISTRIBUTIONS – COVID 19 CASES AND DEATHS

### A. Distribution of COVID-19 cases by gender, age, and race in Fulton County by Fulton Region

	North Fulton Cities <sup>1</sup> Count (%)	Atlanta Count (%)	South Fulton Cities <sup>2</sup> Count (%)	Unknown City Count (%)	All Fulton Count (%)
<b>Total COVID-19 cases</b>	8311	12795	5941	2206	29253
<b>Gender:</b> Female	4228 (50.9%)	6228 (48.7%)	3298 (55.5%)	1073 (48.6%)	14827 (50.7%)
Male	3902 (46.9%)	6098 (47.7%)	2480 (41.7%)	1053 (47.7%)	13533 (46.3%)
Unknown*	181 (2.2%)	469 (3.7%)	163 (2.7%)	80 (3.6%)	893 (3.1%)
<b>Age:</b> 0-9	275 (3.3%)	234 (1.8%)	179 (3.0%)	56 (2.5%)	744 (2.5%)
10-19	1229 (14.8%)	966 (7.5%)	406 (6.8%)	161 (7.3%)	2762 (9.4%)
20-29	1834 (22.1%)	3850 (30.1%)	1163 (19.6%)	582 (26.4%)	7429 (25.4%)
30-39	1283 (15.4%)	2750 (21.5%)	1237 (20.8%)	486 (22.0%)	5756 (19.7%)
40-49	1292 (15.5%)	1656 (12.9%)	1102 (18.5%)	353 (16.0%)	4403 (15.1%)
50-59	1201 (14.5%)	1354 (10.6%)	811 (13.7%)	267 (12.1%)	3633 (12.4%)
60-69	620 (7.5%)	908 (7.1%)	538 (9.1%)	162 (7.3%)	2228 (7.6%)
≥70	570 (6.9%)	1031 (8.1%)	502 (8.4%)	131 (5.9%)	2234 (7.6%)
Unknown*	<10	46 (0.4%)	<10	<10	64 (0.2%)
<b>Race:</b> Asian, NH	287 (3.5%)	225 (1.8%)	20 (0.3%)	41 (1.9%)	573 (2.0%)
Black, NH	864 (10.4%)	5578 (43.6%)	4032 (67.9%)	723 (32.8%)	11197 (38.3%)
White, NH	3271 (39.4%)	2960 (23.1%)	264 (4.4%)	511 (23.2%)	7006 (23.9%)
Hispanic	1611 (19.4%)	815 (6.4%)	489 (8.2%)	250 (11.3%)	3165 (10.8%)
Other, NH	318 (3.8%)	470 (3.7%)	160 (2.7%)	90 (4.1%)	1038 (3.5%)
Unknown*	1960 (23.6%)	2747 (21.5%)	976 (16.4%)	591 (26.8%)	6274 (21.4%)

\*Unknown included cases not yet interviewed.

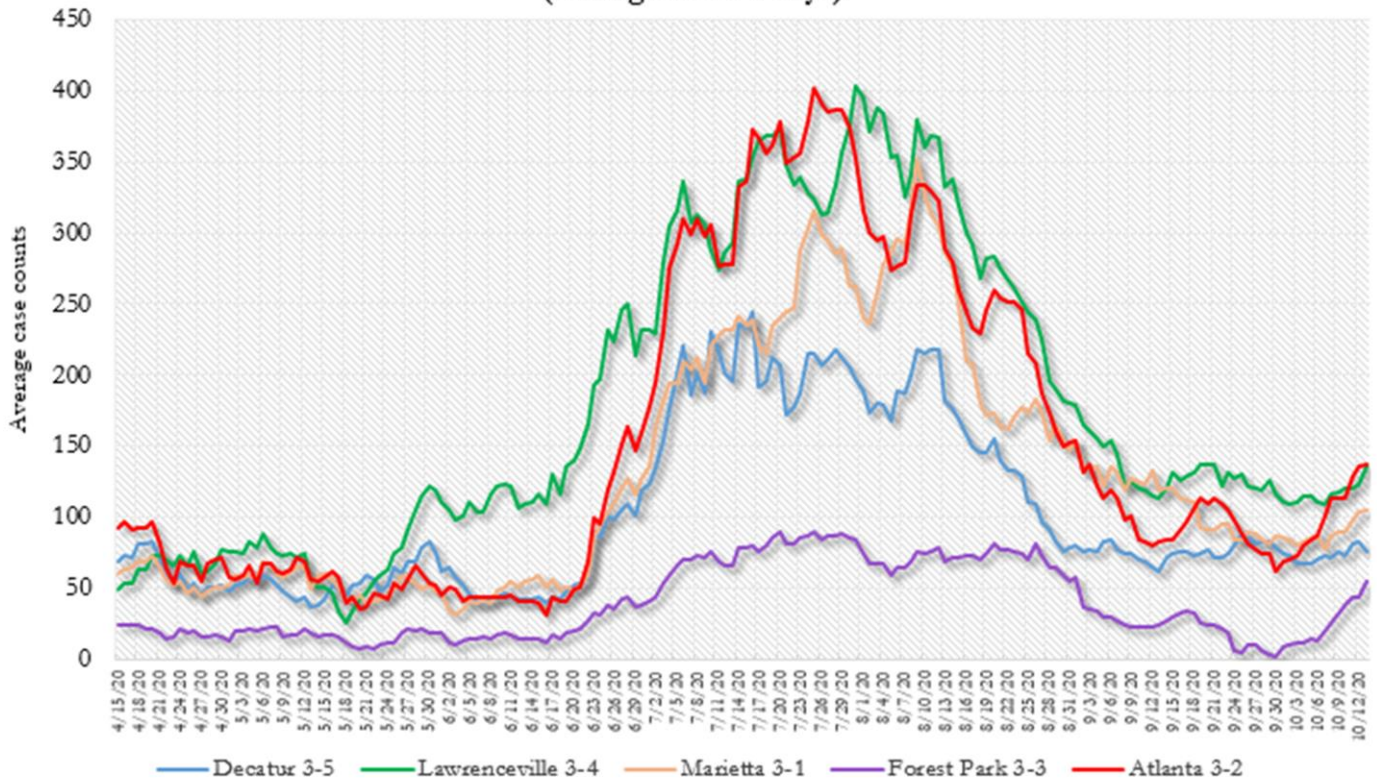
### B. Distribution of COVID-19 deaths by gender, age, and race in Fulton County by Fulton Region

	North Fulton Cities <sup>1</sup> Count (%)	Atlanta Count (%)	South Fulton Cities <sup>2</sup> Count (%)	Unknown City Count (%)	All Fulton Count (%)
<b>Total COVID-19 deaths</b>	130	285	160	19	594
<b>Gender:</b> Female	58 (44.6%)	127 (44.6%)	85 (53.1%)	<10	279 (47.0%)
Male	72 (55.4%)	158 (55.4%)	75 (46.9%)	10 (52.6%)	315 (53.0%)
Unknown	0	0	0	0	0
<b>Age:</b> ≤ 29	<10	<10	<10	0	<10
30-39	<10	<10	<10	<10	13 (2.2%)
40-49	<10	<10	<10	<10	25 (4.2%)
50-59	<10	24 (8.4%)	18 (11.3%)	<10	50 (8.4%)
60-69	16 (12.3%)	52 (18.2%)	36 (22.5%)	<10	105 (17.7%)
≥70	101 (77.7%)	188 (66.0%)	93 (58.1%)	13 (68.4%)	395 (66.5%)
Unknown	0	<10	0	0	<10
<b>Race:</b> Asian, NH	<10	<10	<10	0	10 (1.7%)
Black, NH	22 (16.9%)	243 (85.3%)	131 (81.9%)	<10	403 (67.8%)
White, NH	90 (69.2%)	32 (11.2%)	18 (11.3%)	10 (52.6%)	150 (25.3%)
Hispanic	11 (8.5%)	<10	<10	<10	21 (3.5%)
Other, NH	0	<10	<10	0	<10
Unknown	<10	<10	0	0	<10

<sup>1</sup>Includes all Fulton County cities north of Atlanta metro (Alpharetta, Milton, Johns Creek, Roswell, Sandy Springs, Mountain Park ) <sup>2</sup>Includes all cities south of Atlanta (College Park, Chattahoochee Hills, East Point, Hapeville, Palmetto, South Fulton, Fairburn, Union City). **Note:** All data reported are preliminary and subject to change. This table includes data on all confirmed COVID-19 deaths and is subject to change as GA DPH completes cause of death confirmation processes.

**COVID-19 CASE TRENDS IN FULTON AND SURROUNDING DISTRICTS**

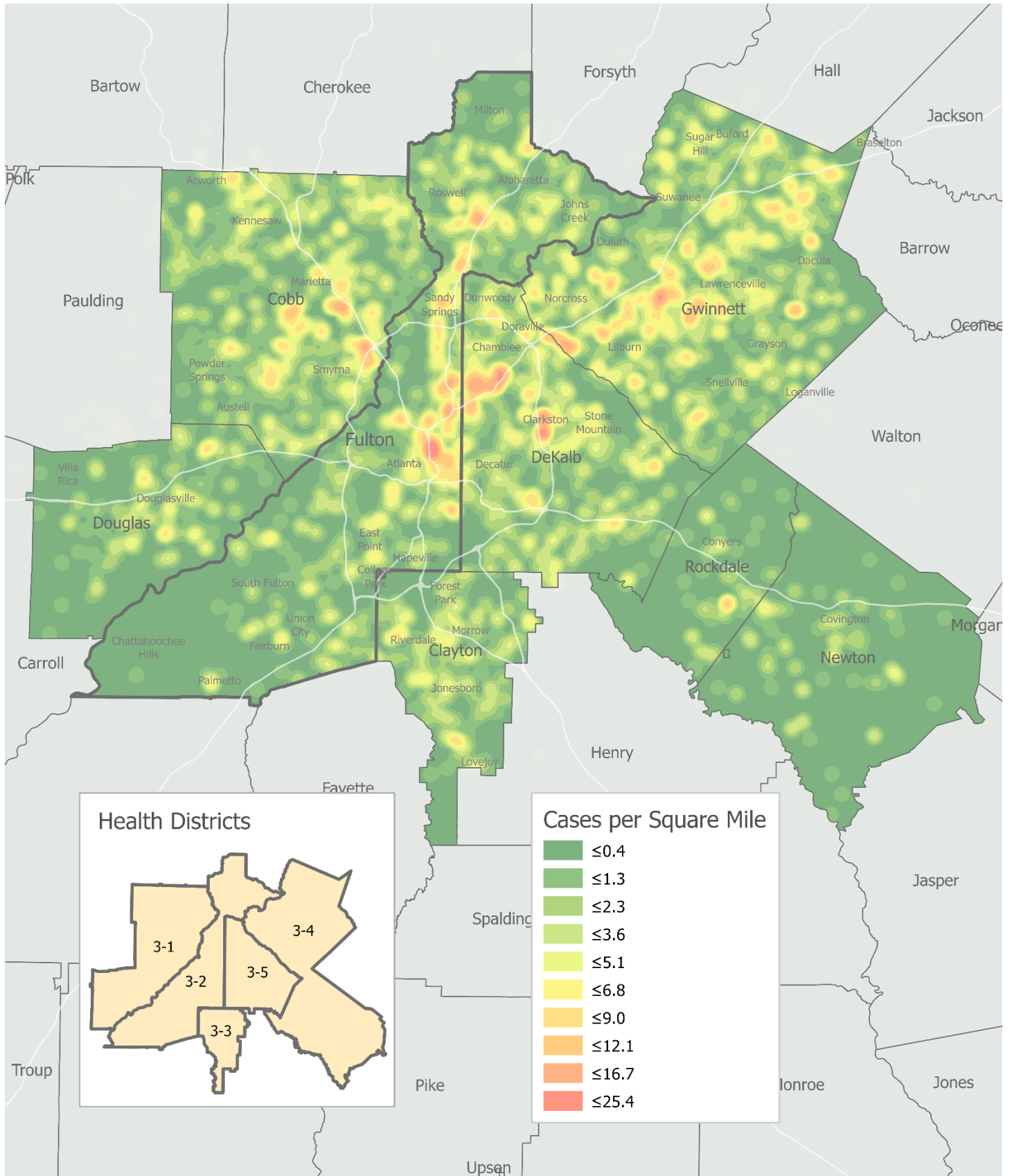
**Fig. 9. Daily Case Counts for Atlanta Metro Districts  
(Averaged over 7 days)**



\*Graph shows the average number of cases calculated from the daily cumulative case counts in the metro Atlanta districts. Increases in daily cumulative case counts may include cases diagnosed earlier during the pandemic but were only recently reported to the state as cases diagnosed belonging to these districts.

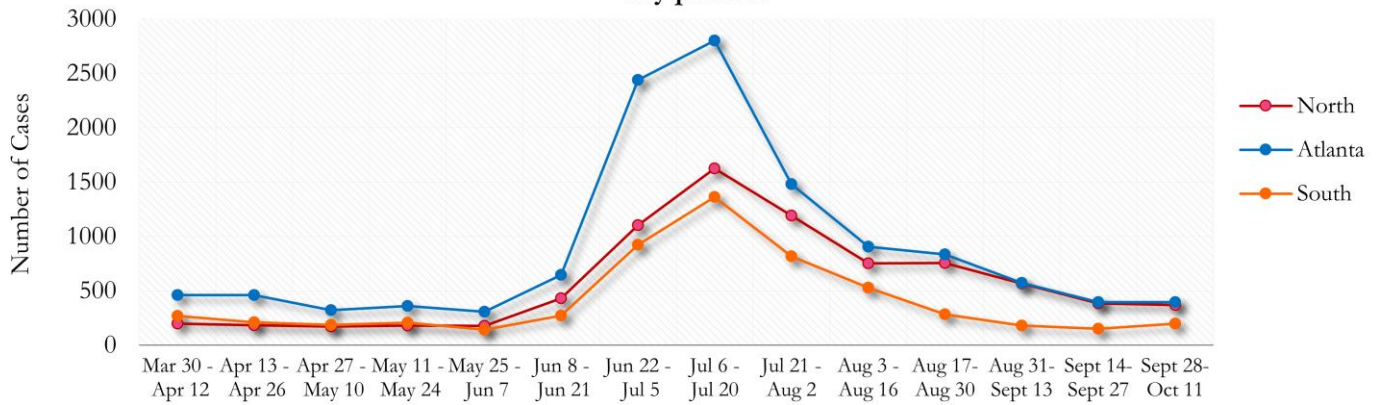


Fig. 10. COVID-19 Cases in Fulton County and Surrounding Districts (Sept 22 – Oct 6, 2020)



**TRENDS IN COVID-19 CASES AMONG DEMOGRAPHIC GROUPS (14 DAY PERIODS)**

**Fig. 11. Trends in Geographic distribution of COVID -19 Cases in Fulton County by 14-day periods**

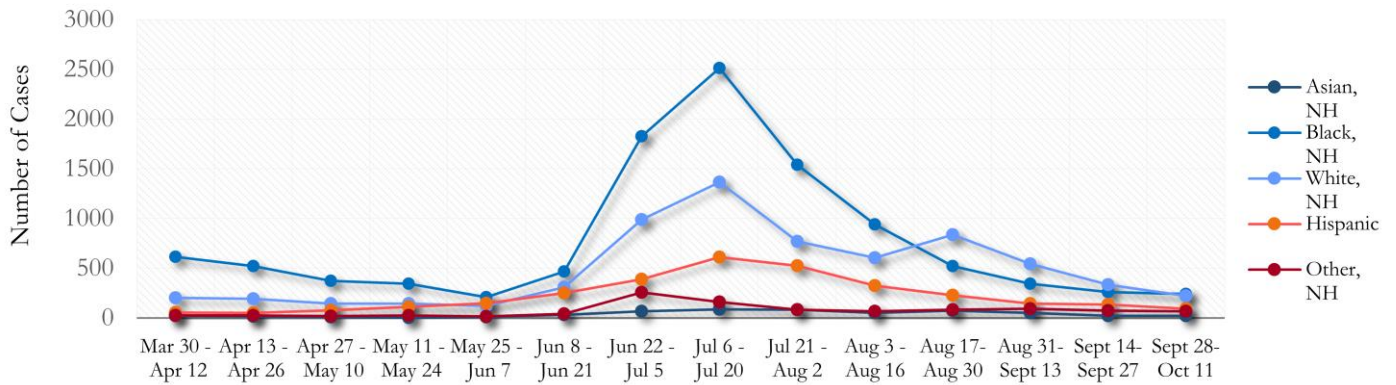


In the past two weeks, the city of Atlanta and the Northern region have accounted for almost equal amounts of new cases.

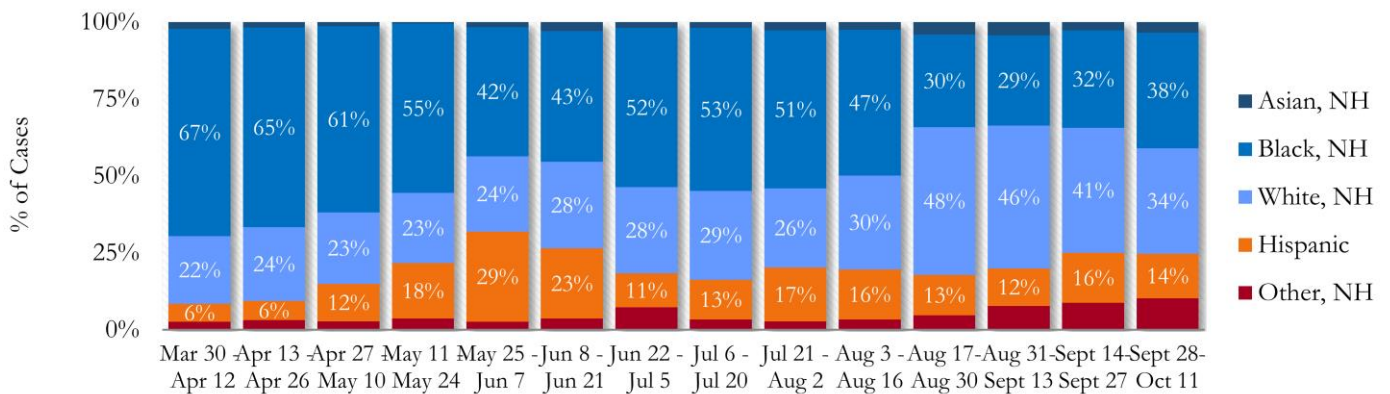
\*North -Includes all Fulton cities north of Atlanta (Alpharetta, Milton, Johns Creek, Roswell, Sandy Springs, Mountain Park)

\*South - Includes all Fulton cities south of Atlanta (College Park, Chattahoochee Hills, East Point, Hapeville, Palmetto, South Fulton, Fairburn, and Union City)

**Fig. 12. Trends in Racial Distribution of COVID -19 Cases in Fulton County by 14-day periods**

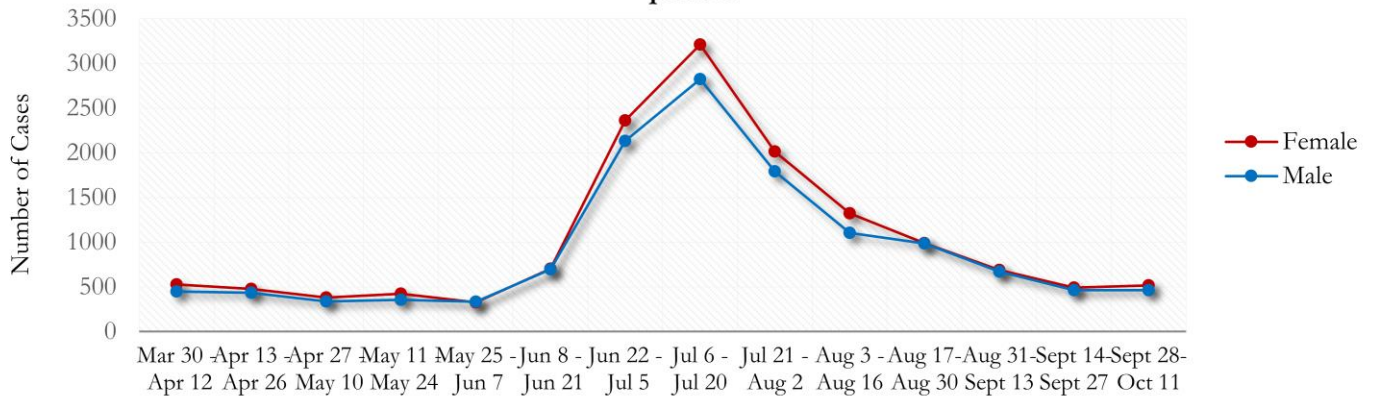


**Fig. 13. Racial Distribution of COVID -19 Cases in Fulton County by 14-day periods**

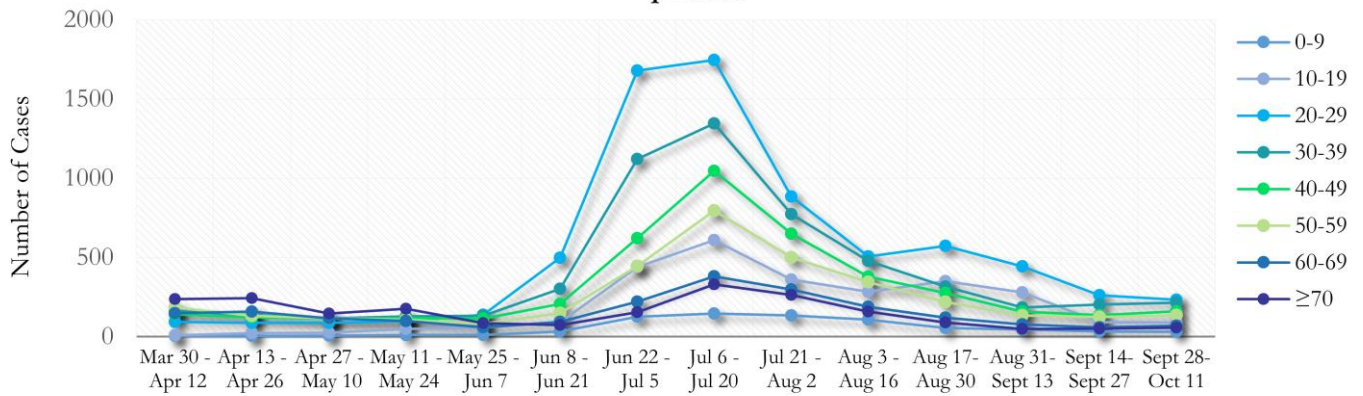


About 21% of COVID cases are missing data on patient race and ethnicity. The majority of new cases in the past two weeks were Black, NH (38%).

**Fig. 14. Trends in Gender Distribution of COVID -19 Cases in Fulton County by 14-day periods**

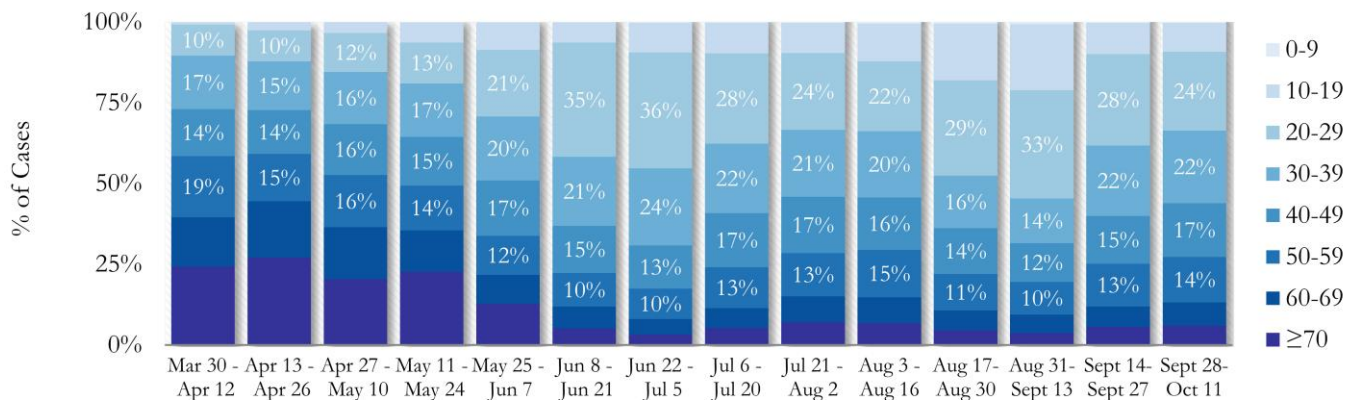


**Fig. 15. Trends in Age Distribution of COVID -19 Cases in Fulton County by 14-day periods**



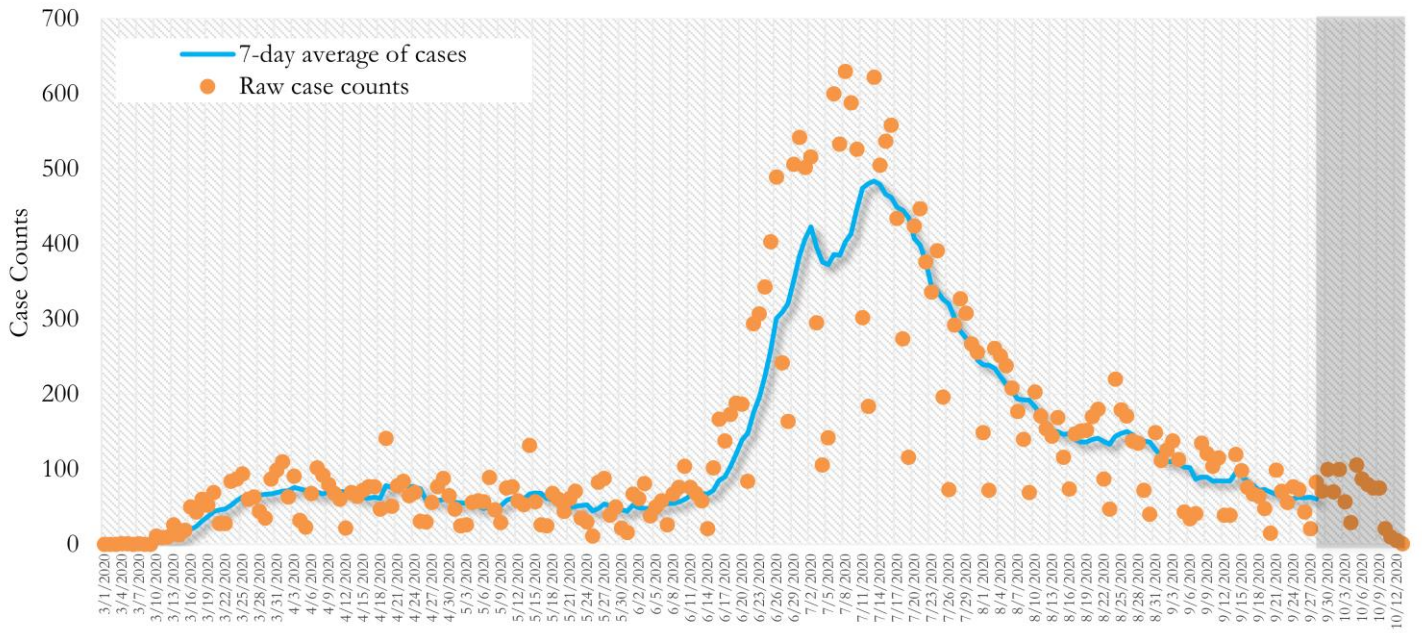
Earlier (March-May 2020) large proportions of reported cases were among persons aged 60 and older. In the most recent two weeks, 20-29 year olds accounted for the highest number of new cases among all age group, followed by 30-39 year olds.

**Fig. 16. Age Distribution of COVID -19 Cases in Fulton County by 14-day periods**



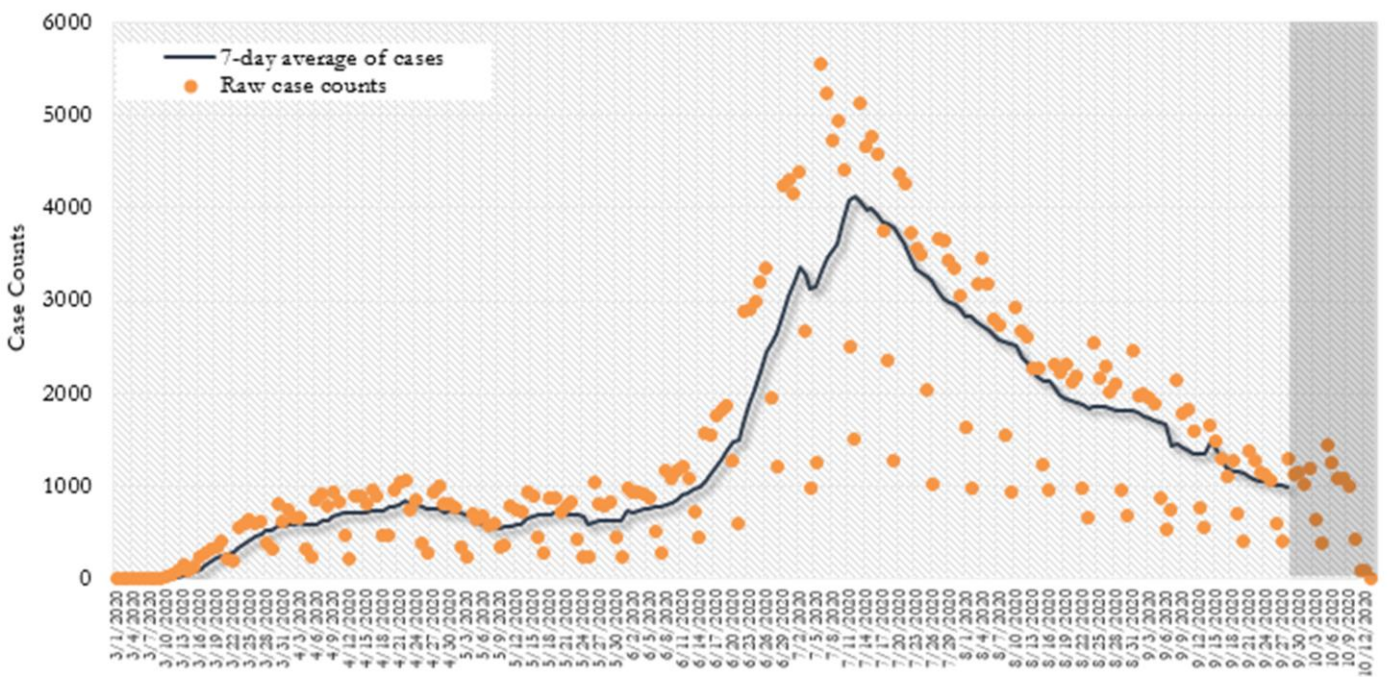
**TRENDS IN COVID-19 CASES, HOSPITALIZATIONS AND DEATHS (7-DAY MOVING AVE.)**

**Fig. 17. New COVID-19 Cases in Fulton County Daily (Averaged over 7 days)**



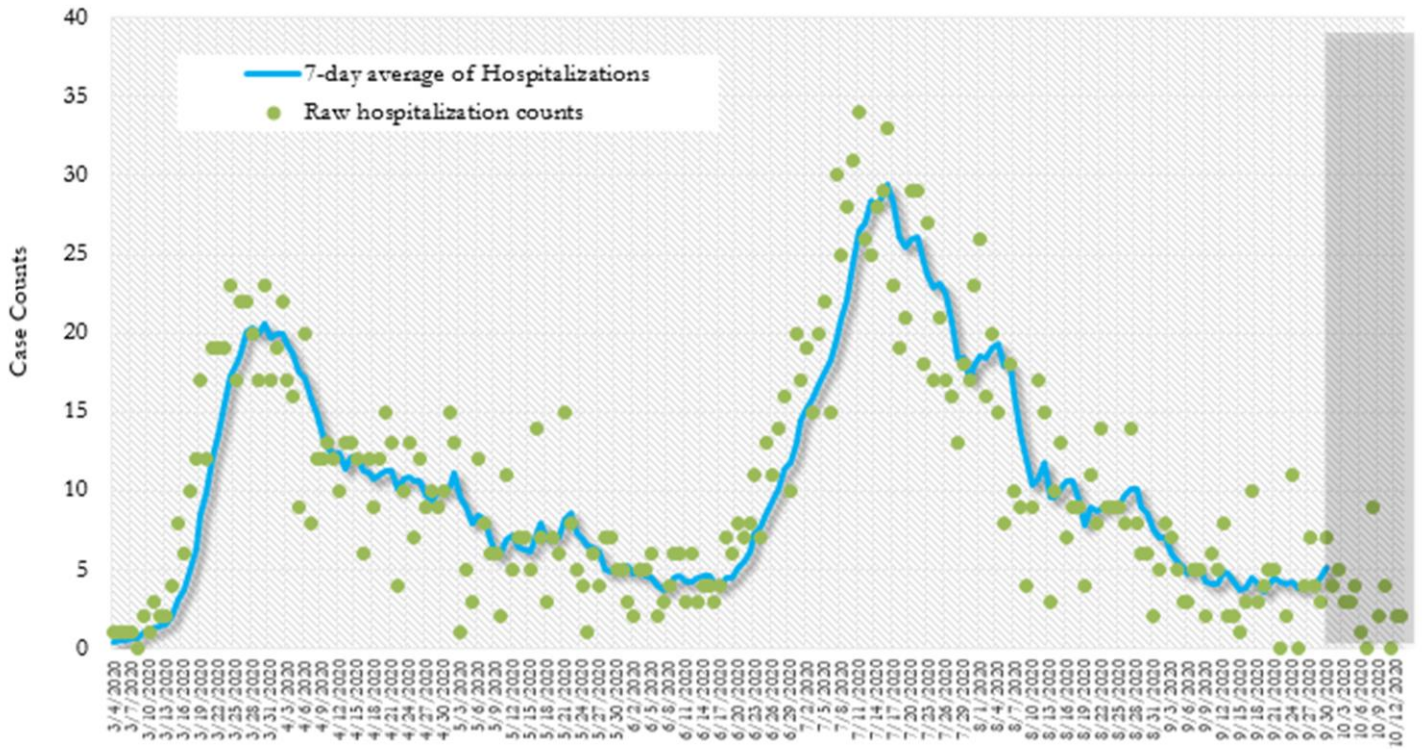
\*Date of collection of first positive sample used (report creation date used where sample collection date is missing). Graph above reflects the trend in COVID-19 diagnosis. Due to the high volume of testing in recent weeks, there have been delays in reporting lab results. Thus, the trend is subject to change as more lab results get added to the state surveillance database.

**Fig. 18. New COVID-19 Cases in Georgia State Daily (Averaged over 7 days)**



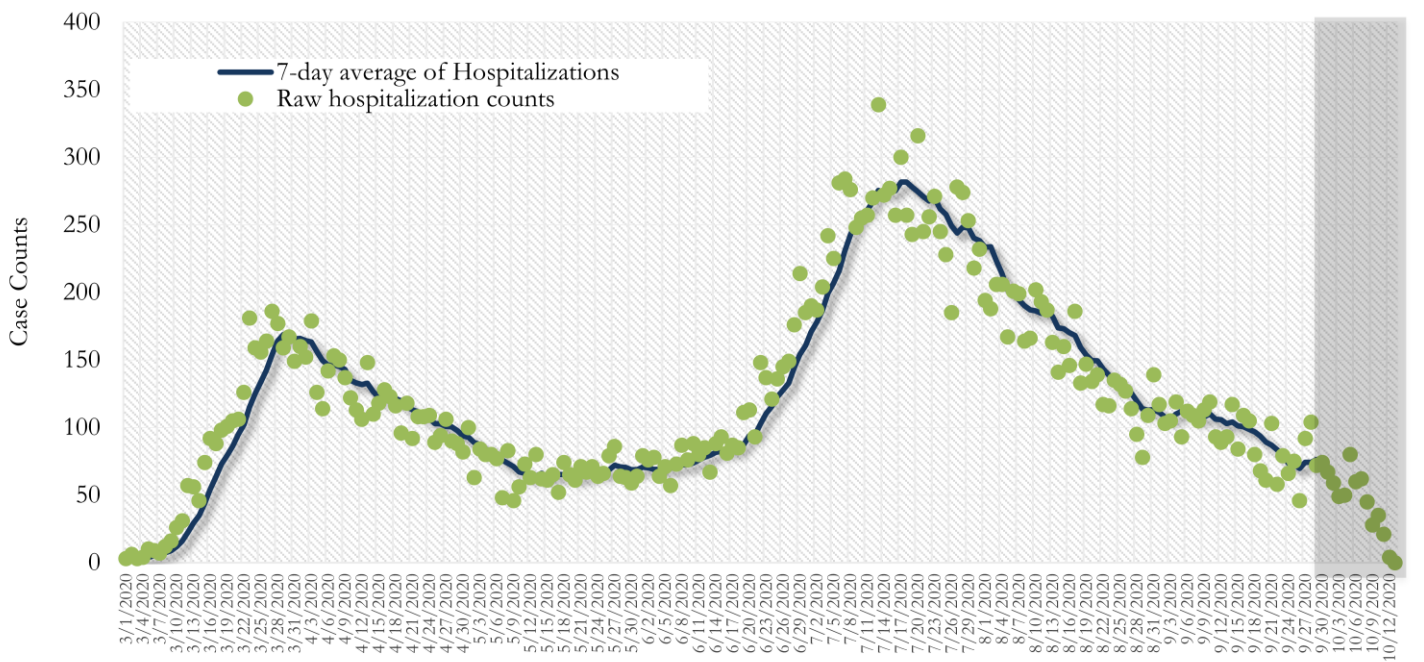
\*Date of collection of first positive sample used (report creation date used where sample collection date is missing). Graph above reflects the trend in COVID-19 diagnosis. Due to the high volume of testing in recent weeks, there have been delays in reporting lab results. Thus, the trend is subject to change as more lab results get added to the state surveillance database.

**Fig. 19. COVID-19 Hospitalizations in Fulton County Daily (Averaged over 7 days)**



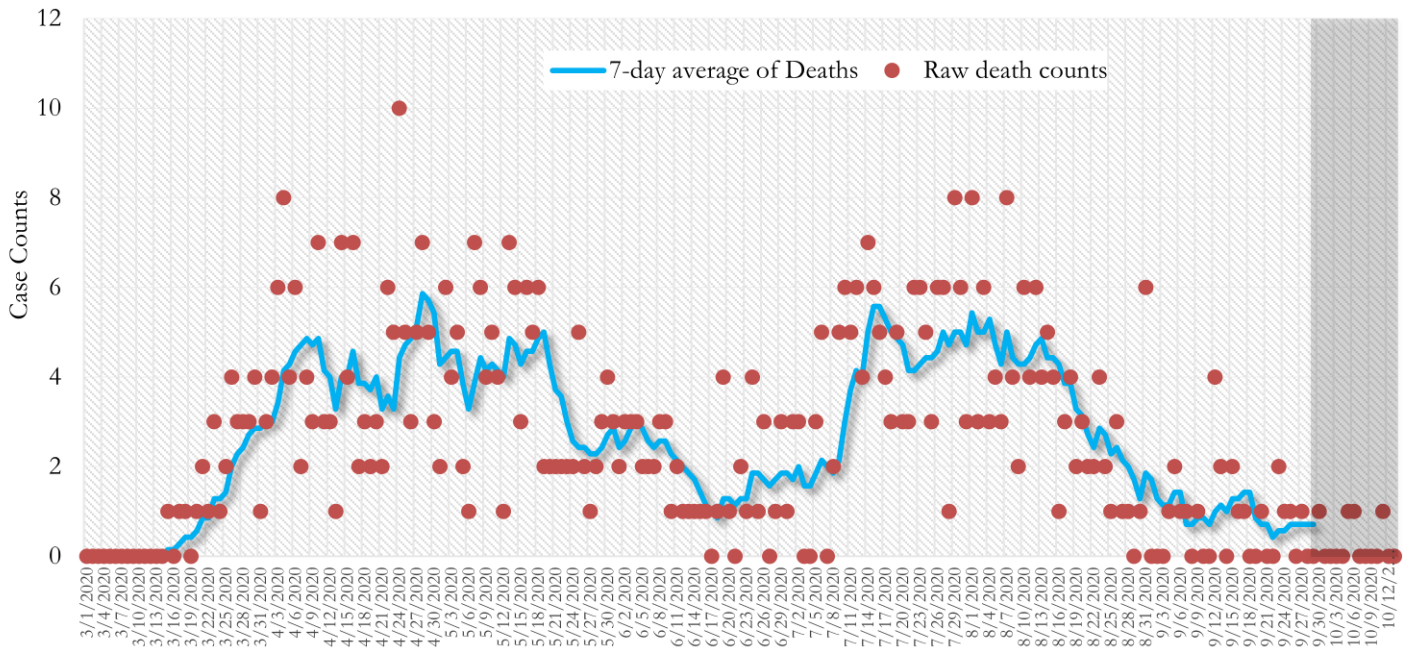
\*Reported date of hospital admission used. Graph above reflects the trend in COVID-19 hospitalizations. Due to the high volume of new cases being added daily, there have been delays in reporting hospitalization data. Thus, the trend is likely to change as more hospitalization data is reported in the state surveillance database.

**Fig. 20. COVID-19 Hospitalizations in Georgia State Daily (Averaged over 7 days)**



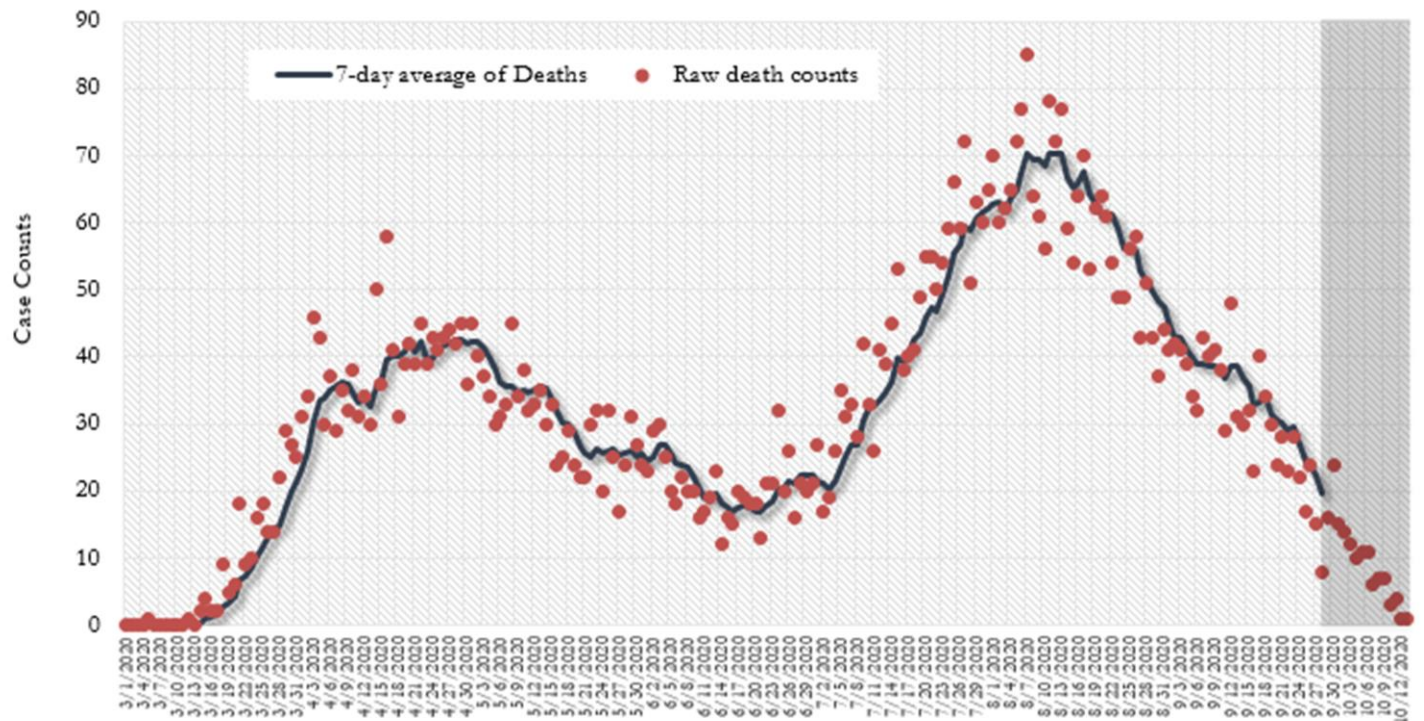
\*Reported date of hospital admission used. Graph above reflects the trend in COVID-19 hospitalizations. Due to the high volume of new cases being added daily, there have been delays in reporting hospitalization data. Thus, the trend is likely to change as more hospitalization data is reported in the state surveillance database.

**Fig. 21. COVID-19 Deaths in Fulton County Daily (Averaged over 7 days)**



\* Reported date of death used. Graph above reflects the trend in deaths attributed to COVID-19. The trend is likely to change as more data on deaths among persons with COVID-19 is reported in the state surveillance database.

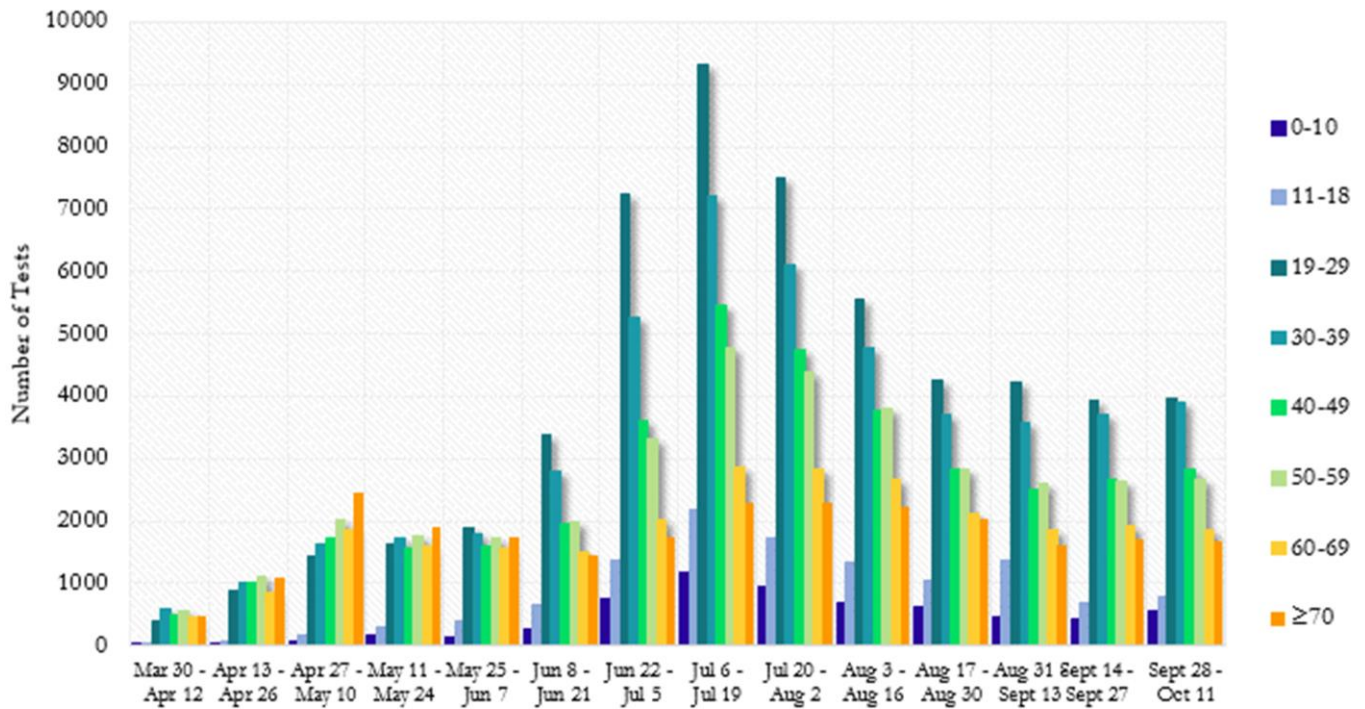
**Fig. 22. COVID-19 Deaths in Georgia State Daily (Averaged over 7 days)**



\* Reported date of death used. Graph above reflects the trend in deaths attributed to COVID-19. The trend is likely to change as more data on deaths among persons with COVID-19 is reported in the state surveillance database.

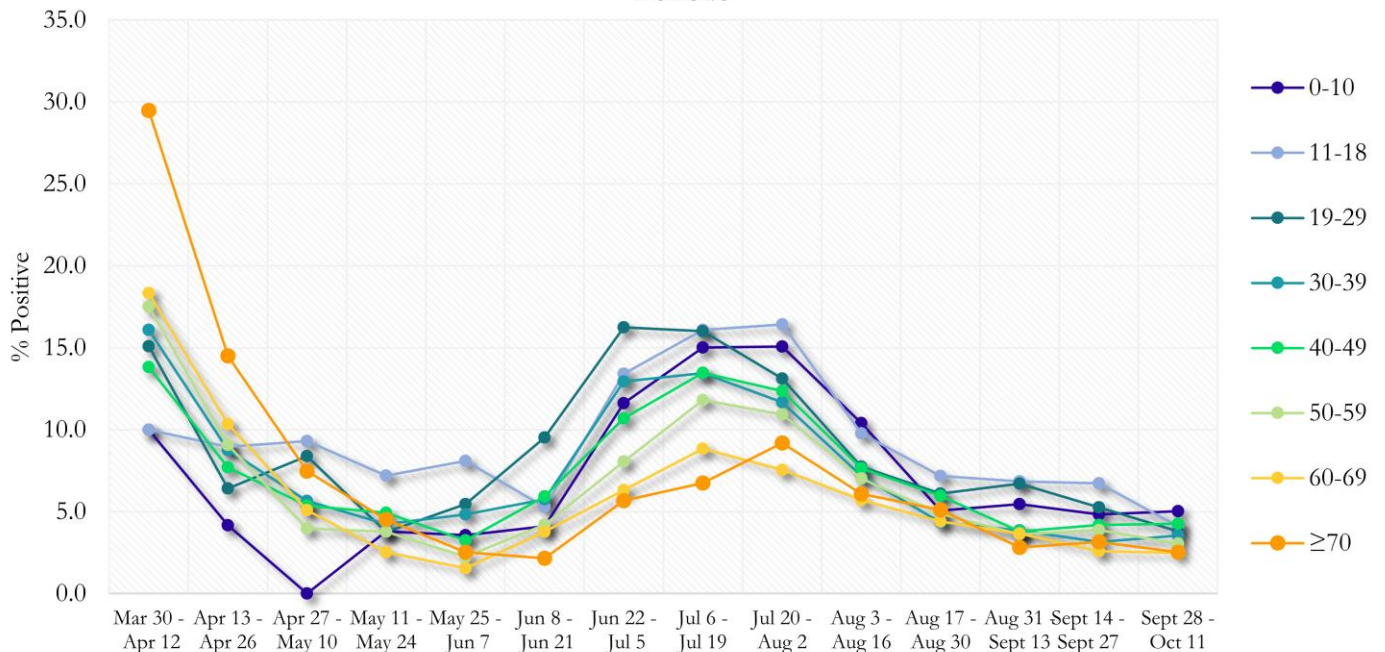
**COVID-19 TESTING AND POSITIVITY IN FULTON COUNTY BY AGE AND RACE**

**Fig. 23. COVID-19 Tests by Age in Fulton County by 14-day Periods**



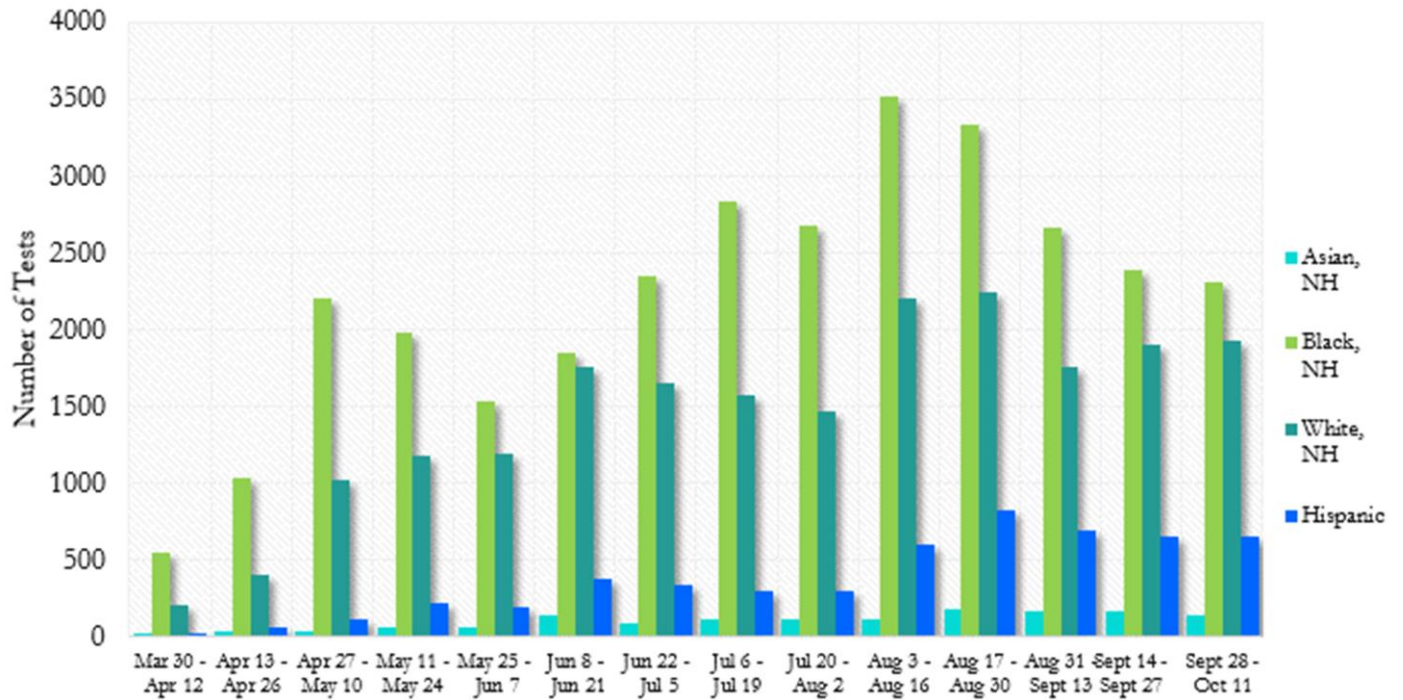
\*Data on Polymerase Chain Reaction (PCR) tests only included.

**Fig. 24. Percent Positive COVID-19 Tests by Age Group in Fulton County by 14-day Periods**



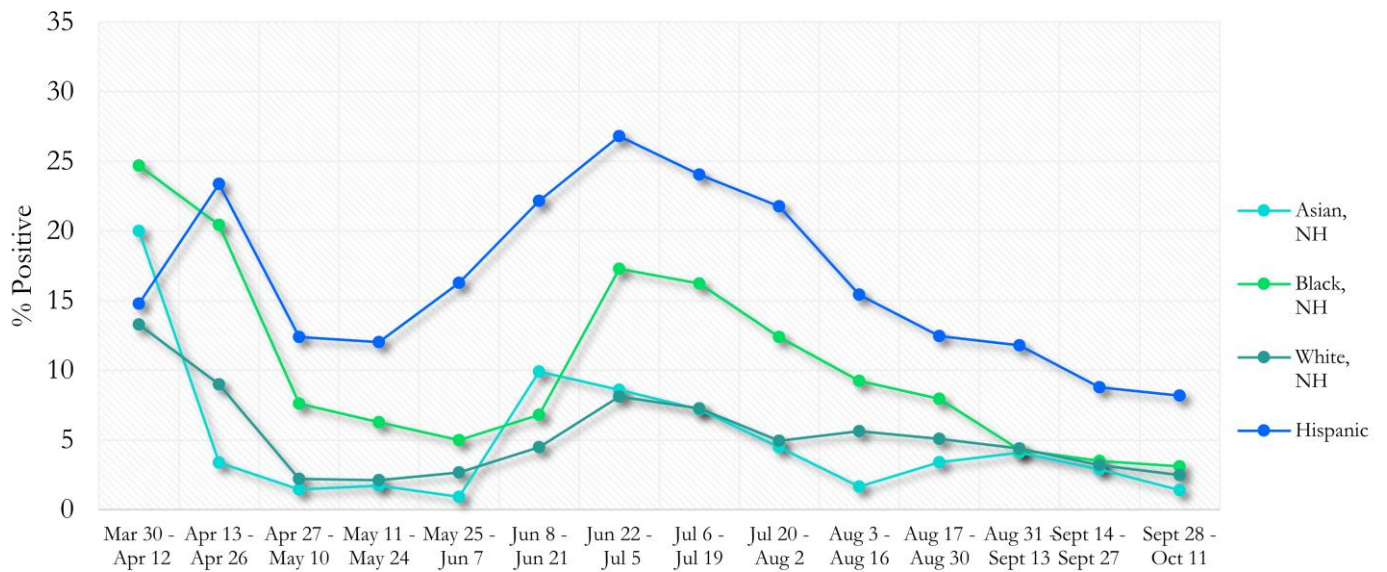
\*Data on Polymerase Chain Reaction (PCR) tests only included.

**Fig. 25. COVID-19 Tests by Race and Ethnicity in Fulton County by 14-day Periods**



\*Data on Polymerase Chain Reaction (PCR) tests only included.

**Fig. 26. Percent Positive COVID-19 Tests by Race and Ethnicity in Fulton County by 14-day Periods**



\*Data on Polymerase Chain Reaction (PCR) tests only included.



## COVID-19 CASE COUNTS BY ZIP CODE

	Prior (10/9/20)	Current Total (10/13/20)		New Cases (Period: 9/8/20 – 10/6/20) <sup>1</sup>		
	Count	Count	%	1st 14 days (Sept 8– Sept 21)	Last 14 d. (Sept 22– Oct 6)	% change <sup>2</sup>
<b>All Fulton</b>	28675	29253	100%	1188	1078	↓ 9.3%
30004	951	964	3.30%	70	55	↓ 21.4%
30005	532	549	1.88%	37	21	↓ 43.2%
30009	481	484	1.65%	50	19	↓ 62.0%
30022	1253	1281	1.08%	75	63	↓ 16.0%
30023	<10	<10	<0.1%	0	0	-
30024	16	16	<0.1%	0	<10	-
30075	1112	1139	3.89%	63	56	↓ 11.1%
30076	1113	1146	3.92%	76	50	↓ 34.2%
30080	<10	<10	<0.1%	0	0	-
30097	281	285	0.97%	23	11	↓ 52.2%
30098	-	-	-	0	0	-
30135	<10	<10	<0.1%	<10	0	↓ 100.0%
30138	<10	<10	<0.1%	0	0	-
30139	-	-	-	0	0	-
30213	1094	1122	3.84%	31	48	↑ 54.8%
30268	203	204	0.70%	<10	15	↑ 200.0%
30291	778	793	2.71%	30	17	↓ 43.3%
30296	54	57	0.19%	<10	0	↓ 100.0%
30301	11	11	<0.1%	<10	0	↓ 100.0%
30303	374	375	1.28%	<10	<10	-
30305	799	835	2.85%	26	36	↑ 38.5%
30306	347	353	1.21%	11	12	↑ 9.1%
30307	196	203	0.69%	<10	<10	-
30308	565	586	2.00%	29	22	↓ 24.1%
30309	826	843	2.88%	47	30	↓ 36.2%
30310	748	759	2.59%	21	19	↓ 9.5%
30311	786	805	2.75%	17	17	-
30312	810	830	2.84%	25	32	↑ 28.0%
30313	299	316	1.08%	20	<10	↓ 65.0%
30314	573	575	1.97%	17	12	↓ 29.4%
30315	883	901	3.08%	28	26	↓ 7.1%
30316	389	392	1.34%	12	10	↓ 16.7%
30318	1753	1789	6.12%	64	60	↓ 6.3%
30319	147	156	0.53%	10	11	↑ 10.0%
30321	10	10	<0.1%	0	0	-
30324	934	951	3.25%	39	37	↓ 5.1%
30326	246	248	0.85%	16	12	↓ 25.0%
30327	562	593	2.03%	24	18	↓ 25.0%
30328	846	866	2.96%	42	50	↑ 19.0%
30331	1792	1824	6.24%	51	75	↑ 47.1%
30334	14	13	<0.1%	0	0	-
30336	85	86	0.29%	<10	0	↓ 100.0%
30337	343	349	1.19%	10	10	-
30338	142	135	0.46%	<10	<10	-
30339	265	265	0.91%	<10	<10	-
30340	35	35	0.12%	0	0	-
30341	33	31	0.11%	0	0	-
30342	1232	1250	4.27%	41	50	↑ 22.0%
30344	920	940	3.21%	22	26	↑ 18.2%
30345	27	27	<0.1%	0	0	-

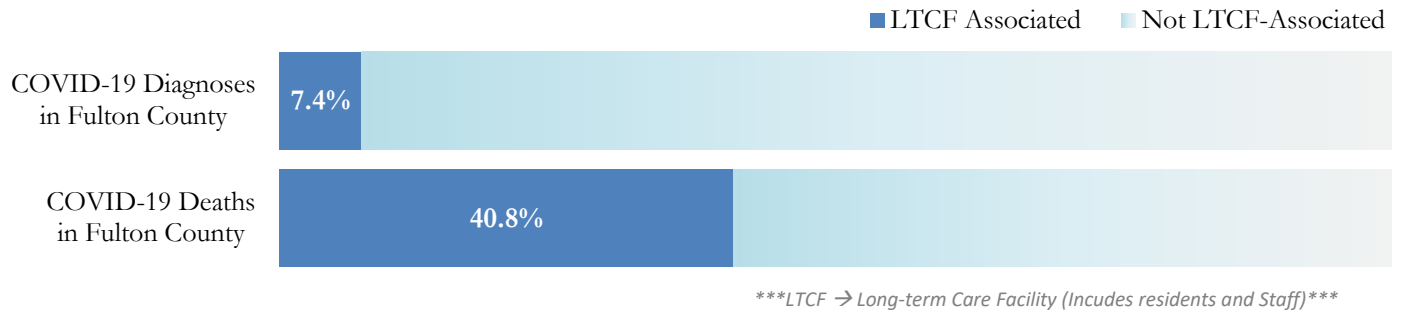
30349	1825	1868	6.39%	54	60	↑ 11.1%
30350	644	654	2.24%	38	40	↑ 5.3%
30354	430	442	1.51%	10	10	-
30358	<10	<10	<0.1%	0	0	-
30363	64	68	0.23%	<10	<10	-
30374	31	31	0.11%	0	0	-
30606	<10	<10	<0.1%	0	0	-
31131	<10	<10	<0.1%	0	0	-
31150	<10	<10	<0.1%	0	0	-
Unknown	1365	768	2.63%	22	17	-

<sup>1</sup>**New cases:** Cases diagnosed in most recent 28 days (based on reported dates of positive sample collection). To allow for lag in reporting results of new diagnoses from samples collected in the most recent week, data used for incident diagnoses analyses were moved back by one week. <sup>2</sup>**Percent change:** These reflect the percentage increase or decrease of new diagnoses between the 14 days preceding the past 7 days and the 14 days preceding that. Changes in ZIP codes with less than 10 cases in both 2 week intervals are not reported\*\*Data cleaning (either during case interviews or address geo-coding) may lead to reassignment of few cases from one territory to another based on their corrected addresses. These may appear as “decreases” when compared to the previous day’s count. These do not reflect errors in the data collection or analysis process but only reflect the minor day-to-day fluctuations in case counts that arise in an evolving public health database like COVID’s. **Note:** Sharp increases in territorial COVID case counts often reflect new cases diagnosed at long term care facilities located in those territories during facility-wide /mass screening events **All data reported are preliminary and subject to change.**

## COVID-19 IN LONG-TERM CARE FACILITIES IN FULTON COUNTY

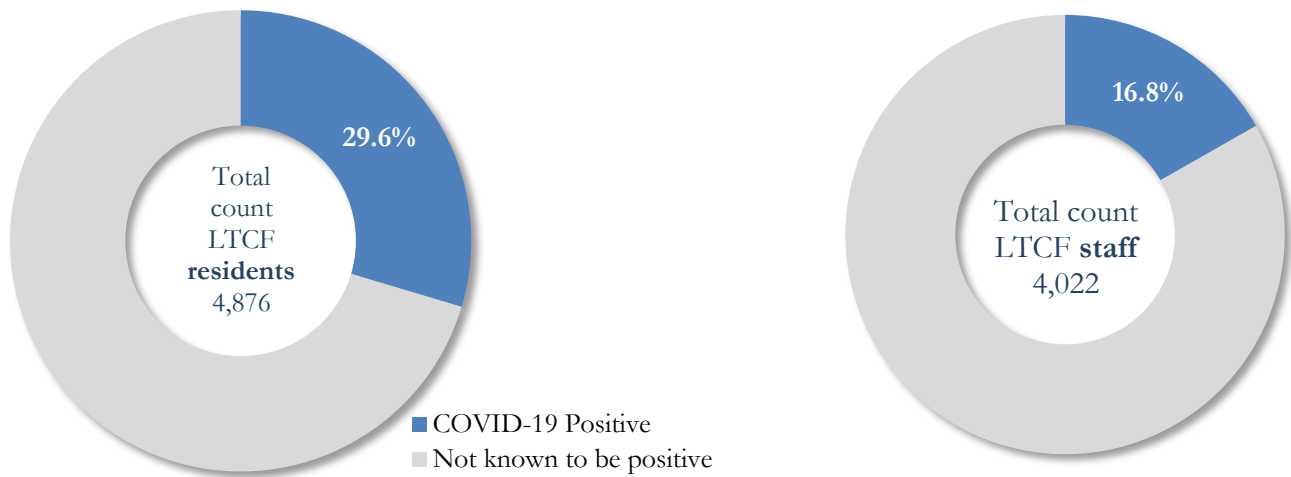
Older persons (aged 65 years and older) and persons who live in nursing homes or other long-term care facilities seem to be at higher risk for developing more serious complications from COVID-19. Extra precautions are recommended for individuals within this risk groups – Centers for Disease Control and Prevention (CDC 2020) <https://www.cdc.gov/coronavirus/2019-ncov/need-extra-precautions/people-at-higher-risk.html>

Fig. 27. COVID-19 Diagnoses and Deaths in Fulton County Associated with Long-Term Care Facilities



## COVID-19 POSITIVITY:

Fig. 28. COVID-19 Positivity at 64 reporting Long-Term Care Facilities (LTCF) in Fulton County



COVID-19 Cases, Hospitalizations, and Deaths among 64 reporting Long-Term Care Facilities in Fulton County

	LTCF Residents (n=4,876)			LTCF Staff (n=4,022)		
	Cases	Hospitalizations	Deaths	Cases	Hospitalizations	Deaths
Average (count per fac.) <sup>1</sup>	23	5	4	11	1	<0.1
Median (count per fac.) <sup>1</sup>	10	2	1	8	0	0
Lowest counts	0	0	0	0	0	0
Highest counts	138	48	30	66	8	2
Total Count	1444 (29.6%) <sup>a</sup>	310 (21.5%) <sup>b</sup>	235 (16.3%) <sup>b</sup>	674 (16.8%) <sup>a</sup>	32 (4.7%) <sup>b</sup>	5 (<1.0%) <sup>b</sup>

<sup>a</sup> Percentage shown reflects proportion of total residents/staff tested who were positive (i.e. COVID-19 Positivity). | <sup>b</sup> Percentages shown are proportions of persons residents/staff diagnosed with COVID-19 who were hospitalized or died after diagnoses.