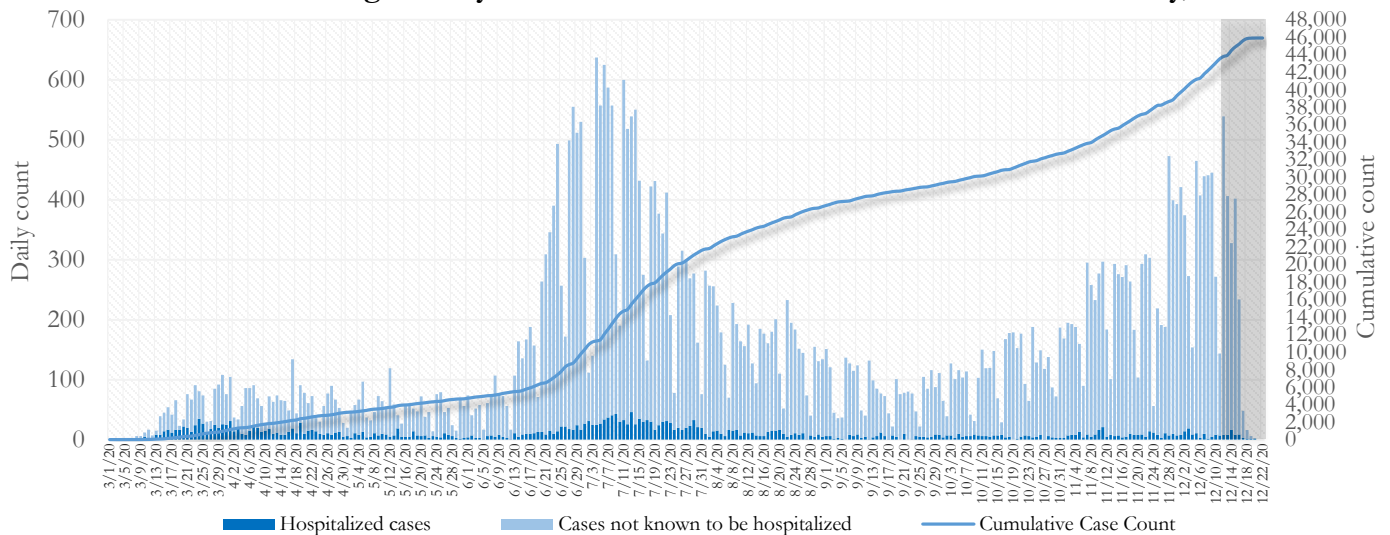


SUMMARY

- As of December 22, 2020, Fulton County has recorded **45,909 cases of the 2019 novel coronavirus (COVID-19)** and **717 confirmed COVID-19 deaths**. 104 deaths are currently being reviewed by GA DPH to confirm cause of death.
- Of the **5,580 new cases** between December 2 and December 15, the central portion of the county (Atlanta) accounted for 41% while the northern and southern parts accounted for 39% and 17% respectively.
- By city, new COVID-19 case rates range from 160.0 per 100,000 persons (Mountain Park) to 758.6 per 100,000 persons (Union City). [**Fulton County Diagnoses Rates (per 100,000 persons): Cumulative – 4176.7; Incidence –507.7**]. See map showing incidence case rate by ZIP code on Pg.17.
- Among all persons diagnosed with COVID-19 in Fulton County since July 1, **5.3% required hospitalization and 1.1% died**.
- Of all testing done in Fulton County between December 7 and December 20, the **percent positivity rate was 9.4%**.

Fig 1. Daily and Cumulative COVID-19 cases in Fulton County, GA



*Counts shown reflect the number of confirmed cases as of 10:00 pm on 12/21/20 using the date of first positive sample collection. Where date of sample collection was not available or missing, the date of report creation in GA SENDSS was used instead. **Note:** Delays in data reporting may cause changes in data counts, particularly in the shaded portion. Data throughout this report are preliminary and subject to ongoing data cleaning processes, and thus are subject to change. This report includes data on confirmed PCR tests only. For data on antigen testing, see the [GA DPH County Indicator Reports here](#).

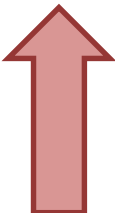
DISTRIBUTION OF COVID-19 CASES BY REGION

New cases: 41% of the new COVID-19 cases in the past 2 weeks occurred in Atlanta while 39% and 17% occurred in the Northern and Southern regions of the county respectively.

Fulton Region	% Cumulative count	% New cases*
Atlanta	43.5%	40.6%
North ¹	31.6%	38.5%
South ²	19.4%	17.2%
Unincorporated/Unknown	5.6%	3.7%

¹Includes all Fulton County cities north of Atlanta (Alpharetta, Johns Creek, Milton, Mountain Park, Roswell, Sandy Springs) | ²Includes all cities south of Atlanta (Chattahoochee Hills, College Park, East Point, Fairburn, Hapeville, Palmetto, South Fulton, and Union City) ***New cases:** Cases diagnosed in the past 2 weeks only (between 12/2/20 – 12/15/20).

In the recent two week reporting period (12/2-12/15), there were more new cases of COVID-19 in Fulton County than the previous two weeks (11/18-12/1).



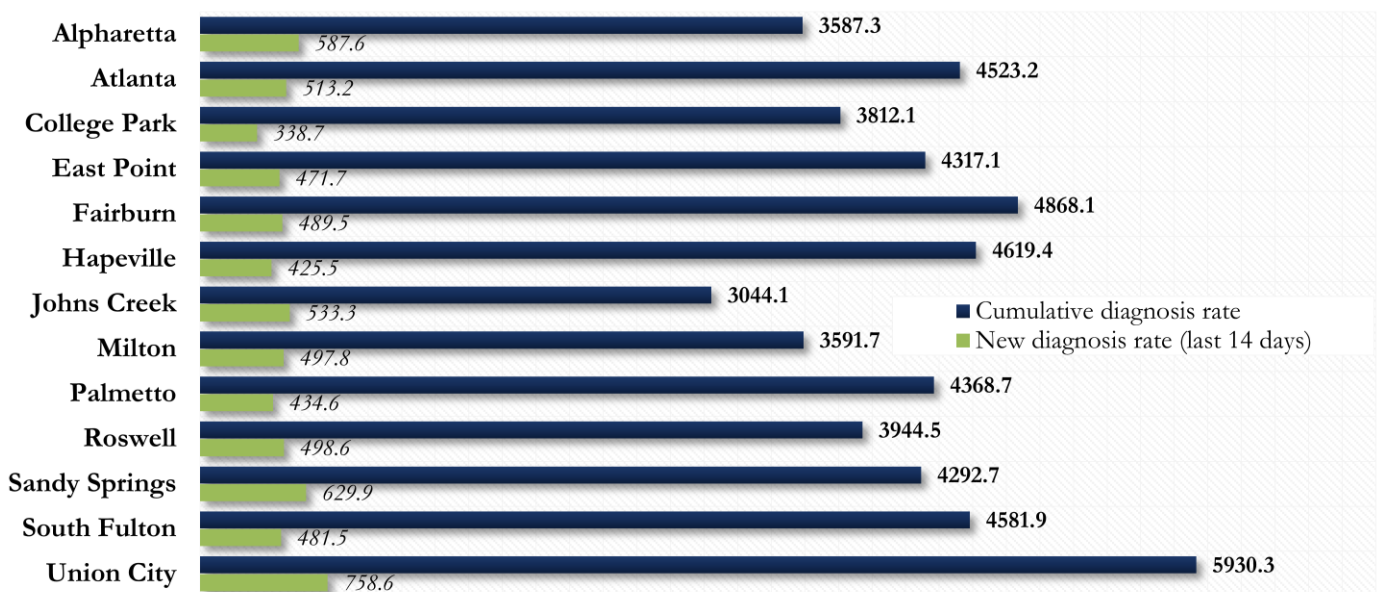
*Delayed a week to account for testing results turnaround time.

COVID-19 CASE COUNTS AND RATES BY CITY

	Prior (12/18/20)	Current Total (12/22/20)			New Cases (Period: 11/18/20 – 12/15/20) ¹			
	Count	Count	%	Cum. Rate ²	Recent 14 d. (12/2–12/15)	Prior 14 d. (11/18–12/1)	% change ³	Rate ⁴ (Last 14 d).
Alpharetta	2223	2320	5.1%	3587.3	380	231	↑ 64.5%	587.6
Atlanta	19292	19955	43.5%	4523.2	2264	1423	↑ 59.1%	513.2
Chattahoochee Hills	57	61	0.1%	2127.7	11	<10	↑ 83.3%	383.7
College Park	520	529	1.2%	3812.1	47	30	↑ 56.7%	338.7
East Point	1473	1510	3.3%	4317.1	165	103	↑ 60.2%	471.7
Fairburn	691	716	1.6%	4868.1	72	49	↑ 46.9%	489.5
Hapeville	298	304	0.7%	4619.4	28	10	↑ 180.0%	425.5
Johns Creek	2423	2546	5.5%	3044.1	446	286	↑ 55.9%	533.3
Milton	1296	1371	3.0%	3591.7	190	139	↑ 36.7%	497.8
Mountain Park	11	11	0.0%	1760.0	<10	0	-	160.0
Palmetto	177	191	0.4%	4368.7	19	11	↑ 72.7%	434.6
Roswell	3578	3718	8.1%	3944.5	470	275	↑ 70.9%	498.6
Sandy Springs	4363	4525	9.9%	4292.7	664	384	↑ 72.9%	629.9
South Fulton	4213	4358	9.5%	4581.9	458	270	↑ 69.6%	481.5
Union City	1196	1243	2.7%	5930.3	159	73	↑ 117.8%	758.6
Unknown	4098	2551	5.6%	-	202	134	-	-

¹**New cases:** Cases diagnosed in most recent 28 days (based on reported dates of positive sample collection). To allow for lag in reporting results of new diagnoses from samples collected in the most recent week, data used for incident diagnoses analyses were moved back by one week. ²**Cumulative diagnosis rate:** Population estimates from US Census Bureau used to calculate cumulative diagnoses rate. All rates shown are per 100,000 persons. ³**% change:** These reflect the percentage increase or decrease in new diagnoses between the 14 days preceding the most recent 7 days and the 14 days preceding that. ⁴**(Incidence) Rate:** Rate of new diagnoses in the last 14 day period preceding the immediate past week. ****Data cleaning** (either during case interviews or address geo-coding) may lead to reassignment of few cases from one territory to another based on their corrected addresses. These may appear as “decreases” when compared to the previous day’s count. These do not reflect errors in the data collection or analysis process but only reflect the minor day-to-day fluctuations in case counts that arise in an evolving public health database like COVID’s. ⁵There was a previous error in which cases were not correctly geocoding to Chattahoochee Hills, though they were included in the total cumulative counts. The numbers shown today reflect the accurate count for Chattahoochee Hills. **Note: All data reported are preliminary and subject to change.**

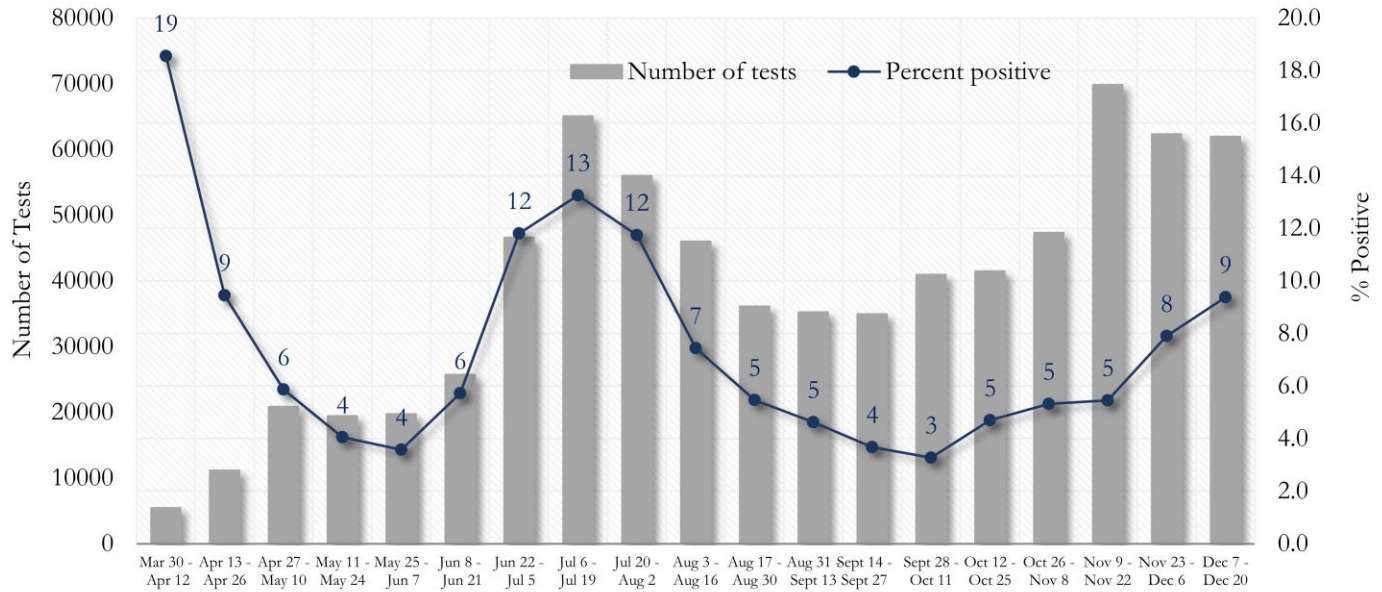
Fig. 2. Incident & Cumulative Diagnoses Rates for COVID-19 by City



*Rates shown are per 100,000 persons | **Note:** Mass testing in specific locations (e.g. long term care facilities) may cause sharp increases in the cumulative rate of COVID-19 diagnosis in those territories. All data shown are preliminary and are subject to change as testing results get updated.

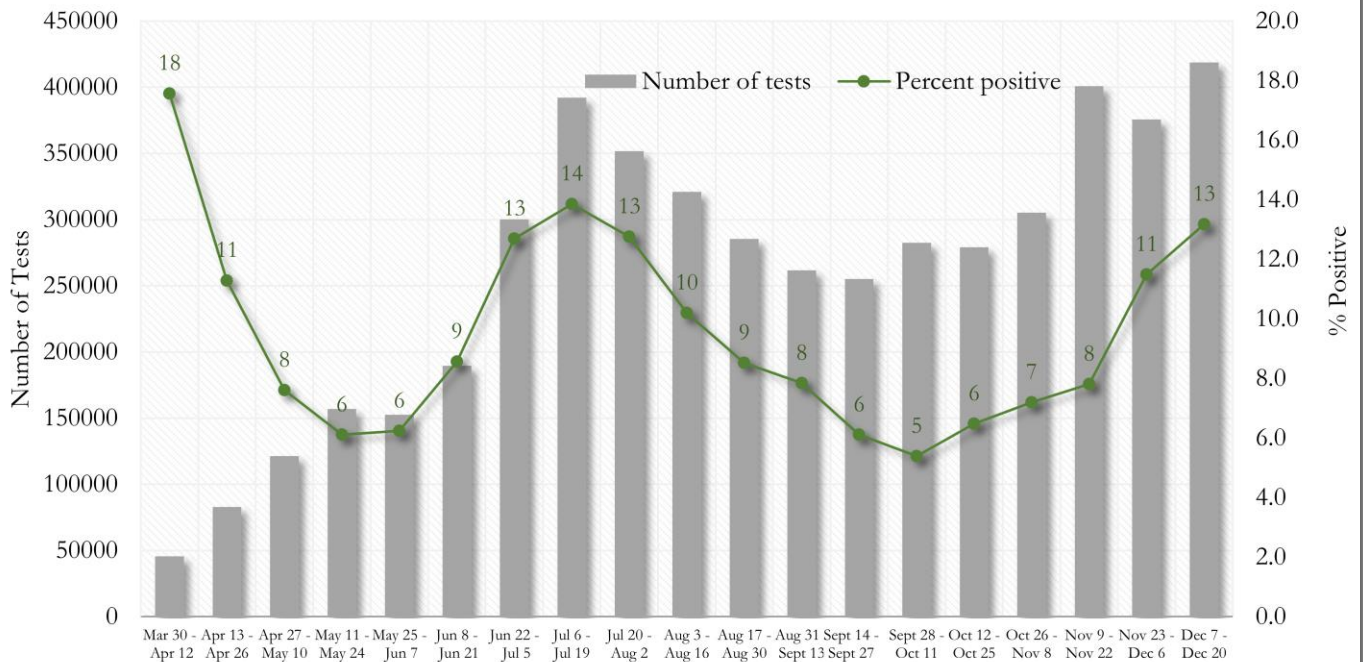
COVID-19 TESTING AND POSITIVITY IN FULTON COUNTY AND GEORGIA

Fig. 3. Trends in Positive COVID-19 Tests in Fulton County by 14-day Periods



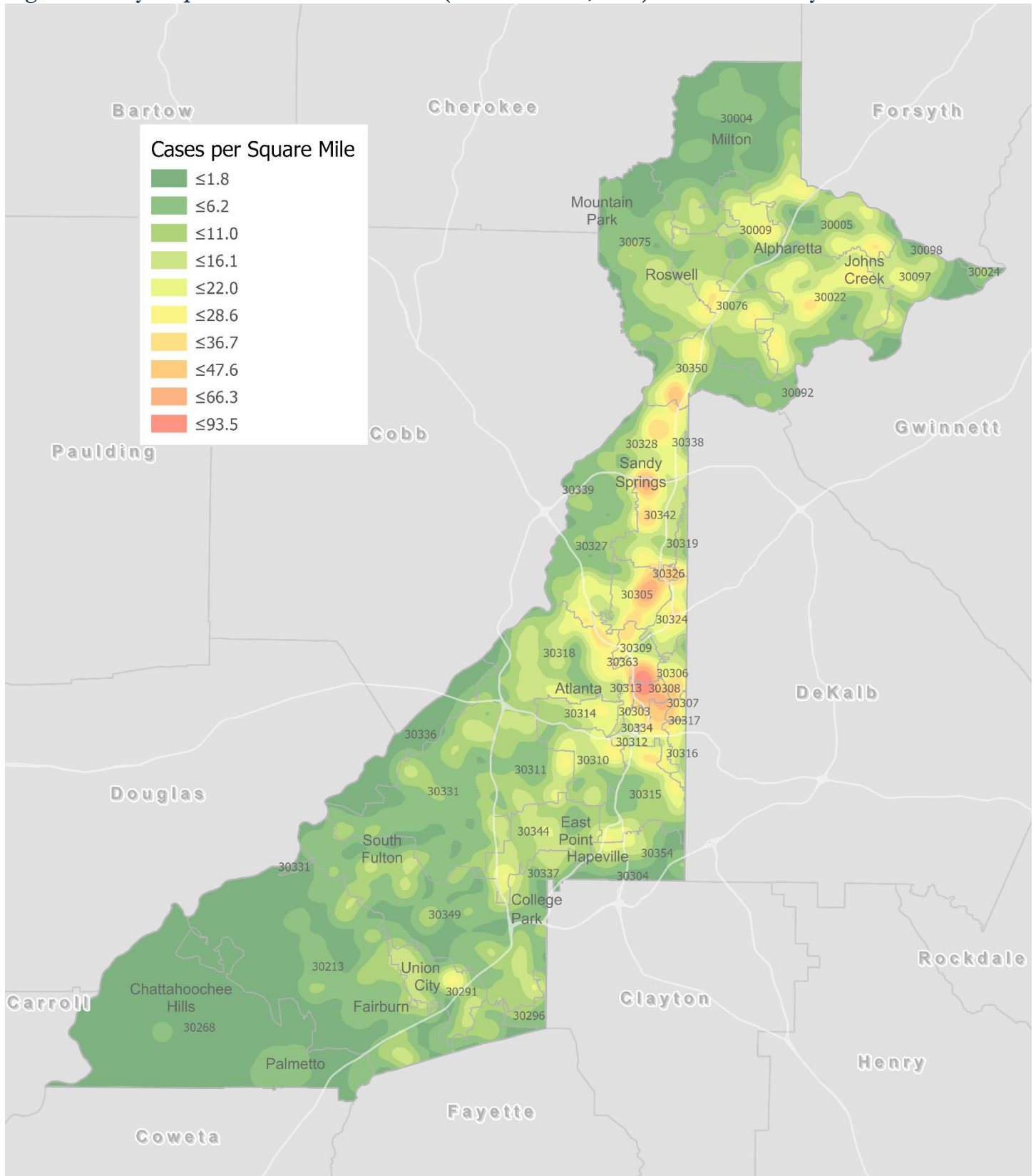
*Data on Polymerase Chain Reaction (PCR) tests only included. This rate is subject to change as more test results are reported.

Fig. 4. Trends in Positive COVID-19 Tests in Georgia by 14-day Periods



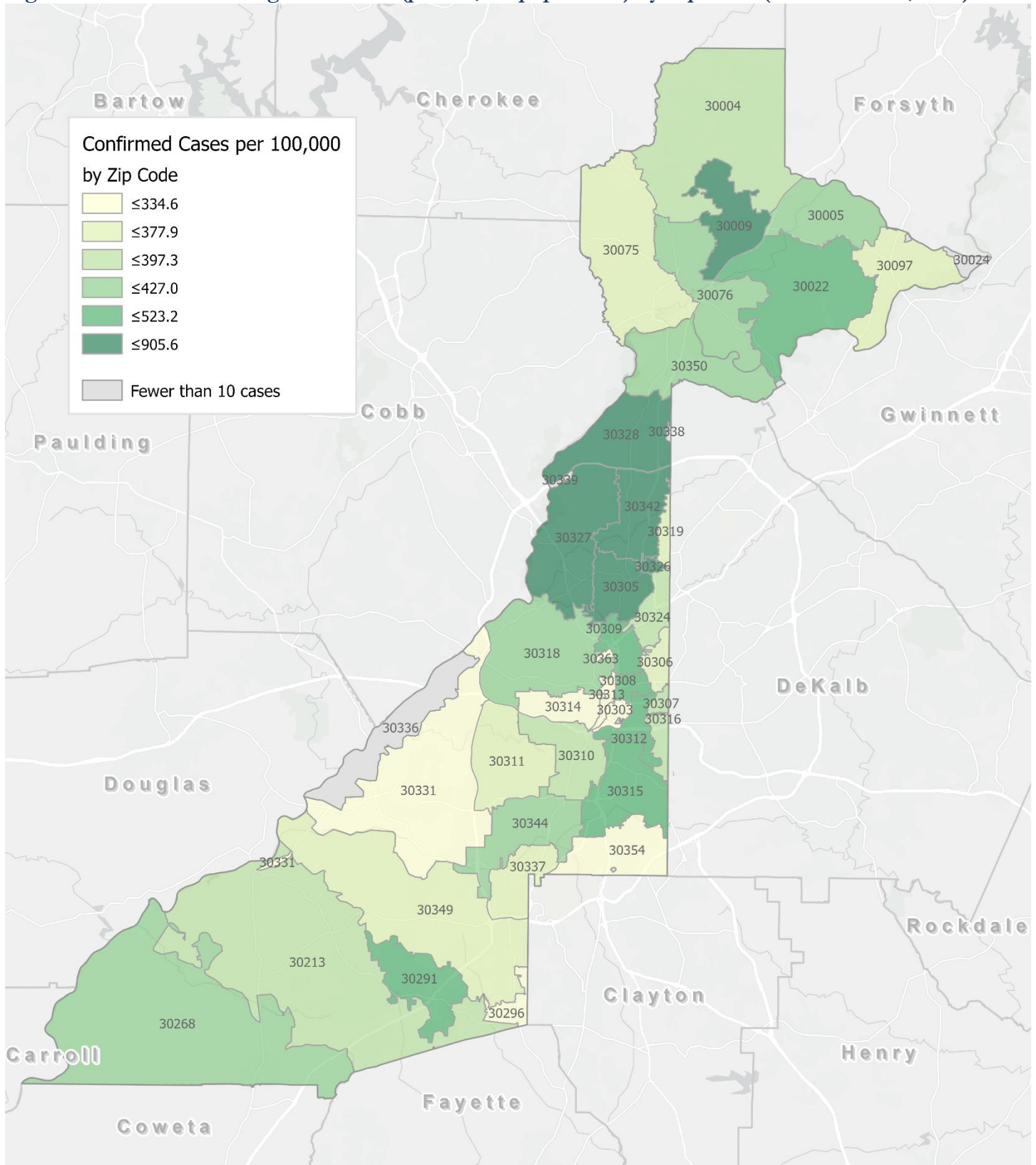
*Data on Polymerase Chain Reaction (PCR) tests only included. This rate is subject to change as more test results are reported.

Fig. 5. Density Map – New COVID-19 Cases (Dec 2– Dec 15, 2020) in Fulton County



New COVID-19 cases: Cases diagnosed in most recent 14 days (based on reported dates of positive sample collection). To allow for lag in reporting results of positive cases from samples collected in the immediate past 7 days, data used for incident diagnoses analyses are moved back by one week. Map reflects new COVID-19 cases diagnosed between Dec 2nd and Dec 15th, 2020 across Fulton County, excluding LTCF cases.

Fig. 6. New COVID-19 Diagnoses Rates (per 100,000 population) by Zip Code (Dec 2– Dec 15, 2020)



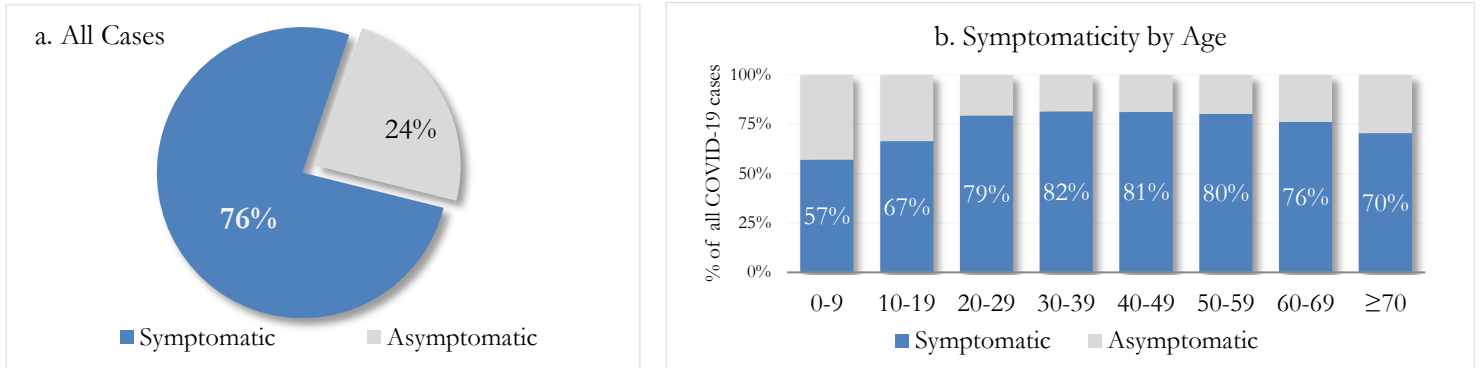
*Rates shown are per 100,000 populations.

New COVID-19 cases: Cases diagnosed in most recent 14 days (based on reported dates of positive sample collection). To allow for lag in reporting results of positive cases from samples collected in the immediate past 7 days, data used for incident diagnoses analyses are moved back by one week. Data used excludes outbreak-related cases at long-term care facilities and map shown reflects only the new non-LTCF cases diagnosed between the dates shown in map title. See page 17 for zip code break down table.

REPORTING SYMPTOMS AMONG PERSONS WITH COVID-19 IN FULTON

People with COVID-19 have reported a wide range of symptoms ranging from mild symptoms to severe illness. Symptoms may appear 2-14 days after exposure to the virus. Symptoms reported include: cough, shortness of breath/difficulty breathing, fever, chills, muscle pain, headache, sore throat, congestion, nausea or vomiting, diarrhea, or new loss of taste or smell – Centers for Disease Control and Prevention (CDC)
<https://www.cdc.gov/coronavirus/2019-ncov/symptoms-testing/symptoms.html>

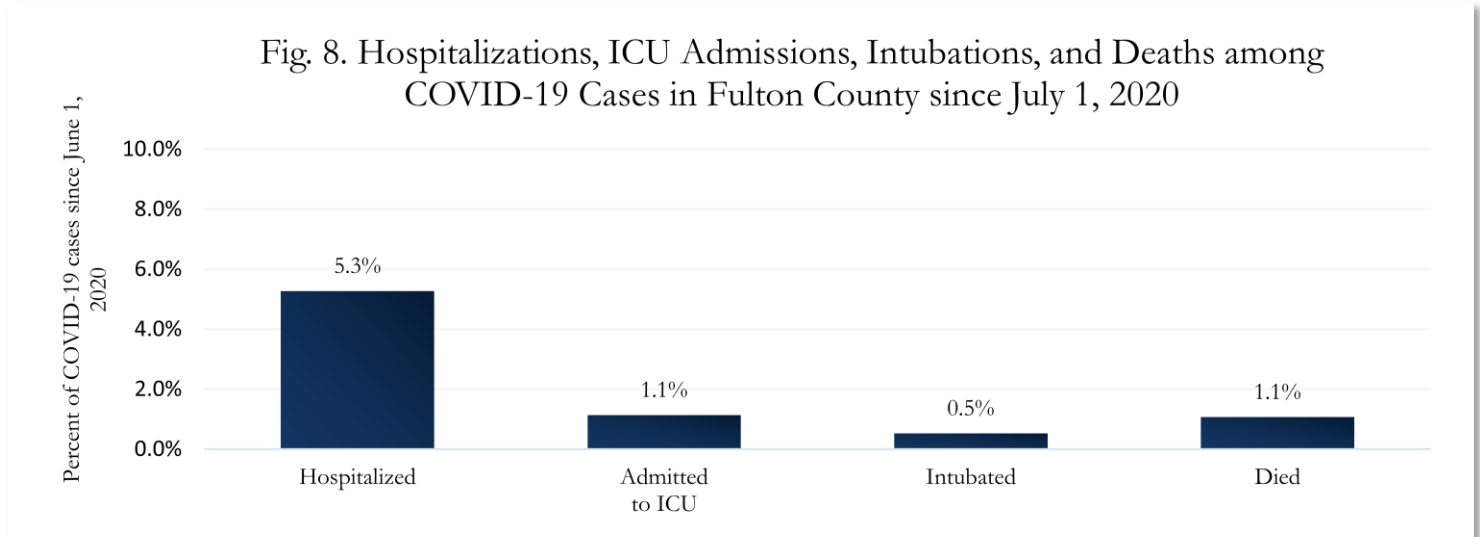
Fig. 7a & b. Total Proportion Reporting Symptoms in Fulton County



COVID-19 cases who have been case interviewed or had medical charts reviewed as of 12/21/20 only. n = 29,638

COVID-19 HOSPITALIZATIONS, ICU ADMISSIONS AND DEATHS IN FULTON

Fig. 8. Hospitalizations, ICU Admissions, Intubations, and Deaths among COVID-19 Cases in Fulton County since July 1, 2020



DEMOGRAPHIC DISTRIBUTIONS – COVID-19 CASES AND DEATHS

A. Distribution of COVID-19 cases by gender, age, and race in Fulton County by Fulton Region

	North Fulton Cities ¹ Count (%)	Atlanta Count (%)	South Fulton Cities ² Count (%)	Unknown City Count (%)	All Fulton Count (%)
Total COVID-19 cases	14491	19955	8912	2551	45909
Gender: Female	7462 (51%)	9997 (50%)	5110 (57%)	1262 (49%)	23831 (52%)
Male	6903 (48%)	9739 (49%)	3738 (42%)	1216 (48%)	21596 (47%)
Unknown*	126 (1%)	219 (1%)	64 (1%)	73 (3%)	482 (1%)
Age: 0-9	520 (4%)	423 (2%)	302 (3%)	70 (3%)	1315 (3%)
10-19	2015 (14%)	1471 (7%)	699 (8%)	178 (7%)	4363 (10%)
20-29	3050 (21%)	5920 (30%)	1653 (19%)	644 (25%)	11267 (25%)
30-39	2207 (15%)	4426 (22%)	1825 (20%)	536 (21%)	8994 (20%)
40-49	2318 (16%)	2637 (13%)	1633 (18%)	404 (16%)	6992 (15%)
50-59	2245 (15%)	2148 (11%)	1259 (14%)	333 (13%)	5985 (13%)
60-69	1144 (8%)	1410 (7%)	819 (9%)	201 (8%)	3574 (8%)
≥70	984 (7%)	1462 (7%)	712 (8%)	173 (7%)	3331 (7%)
Unknown*	<10	58 (0%)	10 (0%)	12 (0%)	88 (0%)
Race: Asian, NH	732 (5%)	393 (2%)	41 (0%)	52 (2%)	1218 (3%)
Black, NH	1639 (11%)	8598 (43%)	6437 (72%)	880 (34%)	17554 (38%)
White, NH	6592 (45%)	5792 (29%)	501 (6%)	638 (25%)	13523 (29%)
Hispanic	2467 (17%)	1286 (6%)	739 (8%)	257 (10%)	4749 (10%)
Other, NH	642 (4%)	704 (4%)	211 (2%)	99 (4%)	1656 (4%)
Unknown*	2419 (17%)	3182 (16%)	983 (11%)	625 (25%)	7209 (16%)

*Unknown includes cases not yet interviewed.

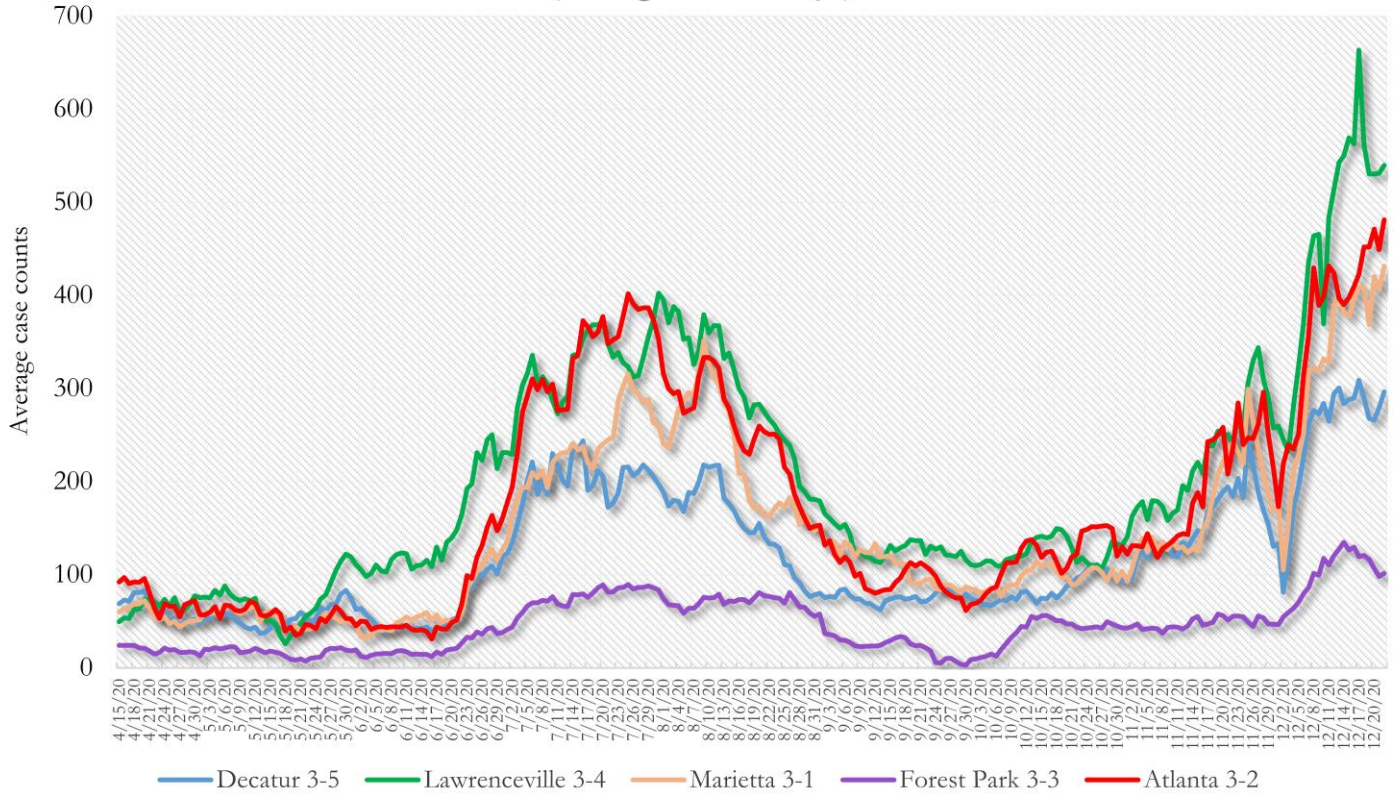
B. Distribution of COVID-19 deaths by gender, age, and race in Fulton County by Fulton Region

	North Fulton Cities ¹ Count (%)	Atlanta Count (%)	South Fulton Cities ² Count (%)	Unknown City Count (%)	All Fulton Count (%)
Total COVID-19 deaths	157	347	187	26	717
Gender: Female	74 (47%)	159 (46%)	93 (50%)	11 (42%)	337 (47%)
Male	83 (53%)	188 (54%)	94 (50%)	15 (58%)	380 (53%)
Unknown	0	0	0	0	0
Age: ≤ 29	<10	<10	<10	0	<10
30-39	<10	<10	<10	<10	14 (2%)
40-49	<10	<10	11 (6%)	<10	28 (4%)
50-59	<10	30 (9%)	22 (12%)	<10	63 (9%)
60-69	20 (13%)	66 (19%)	42 (22%)	<10	130 (18%)
≥70	122 (78%)	231 (67%)	107 (57%)	17 (65%)	477 (67%)
Unknown	0	0	0	0	0
Race: Asian, NH	<10	<10	<10	<10	12 (2%)
Black, NH	28 (18%)	279 (80%)	152 (81%)	10 (38%)	469 (65%)
White, NH	110 (70%)	56 (16%)	25 (13%)	13 (50%)	204 (28%)
Hispanic	15 (10%)	<10	<10	<10	29 (4%)
Other, NH	0	<10	<10	0	<10
Unknown	0	<10	0	0	<10

¹Includes all Fulton County cities north of Atlanta (Alpharetta, Johns Creek, Milton, Mountain Park, Roswell, Sandy Springs) ²Includes all cities south of Atlanta (College Park, Chattahoochee Hills, East Point, Fairburn, Hapeville, Palmetto, South Fulton, Union City). **Note:** All data reported are preliminary and subject to change. This table includes data on only confirmed COVID-19 deaths and is subject to change as GA DPH completes cause of death confirmation processes.

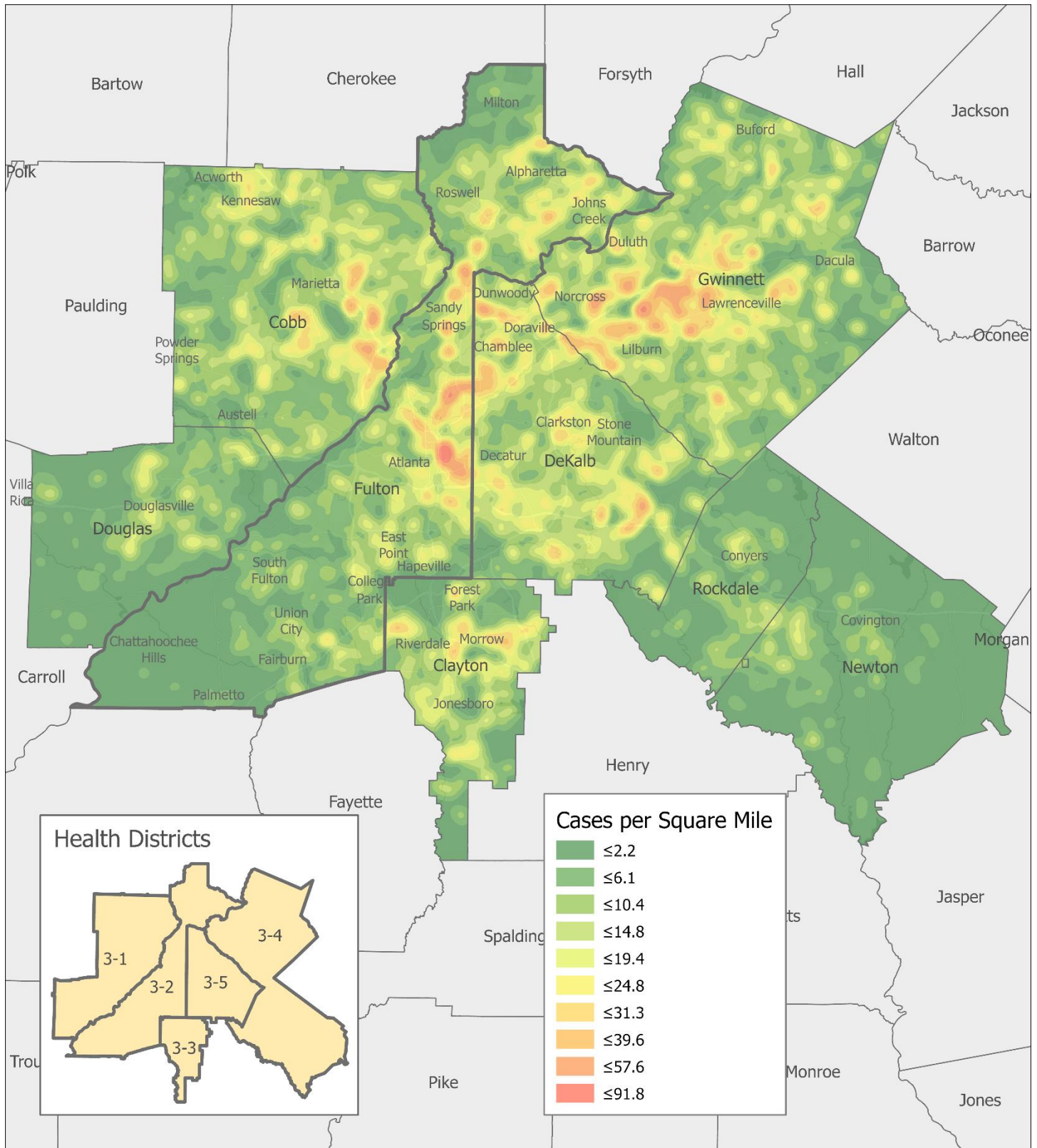
COVID-19 CASE TRENDS IN FULTON AND SURROUNDING DISTRICTS

**Fig. 9. Daily Case Counts for Atlanta Metro Districts
(Averaged over 7 days)**



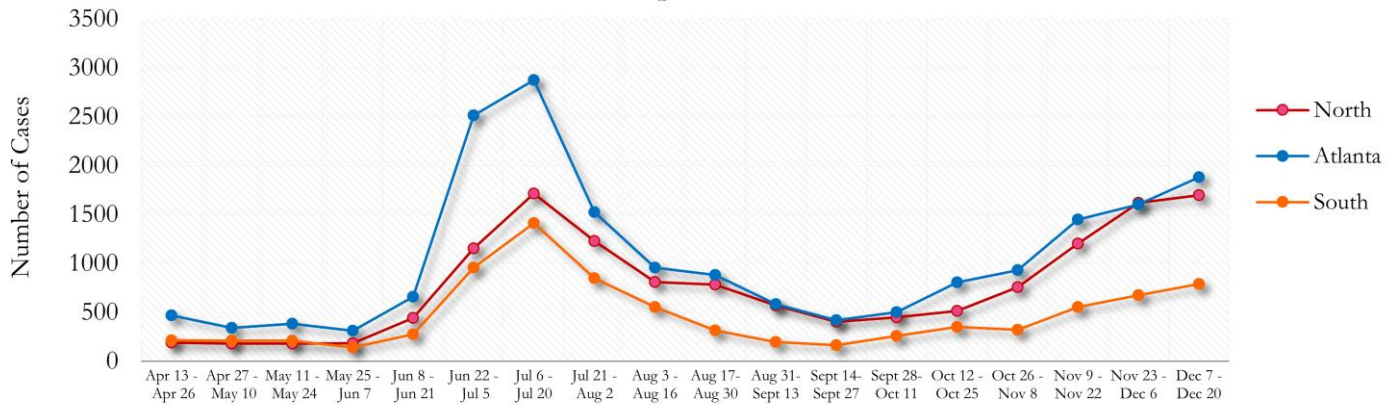
*Graph shows the average number of cases calculated from the daily cumulative case counts in the metro Atlanta districts. Increases in daily cumulative case counts may include cases diagnosed earlier during the pandemic but were only recently reported to the state as cases diagnosed belonging to these districts. Delays in data reporting may cause the trend line to appear as decreasing.

Fig. 10. COVID-19 Cases in Fulton County and Surrounding Districts (Dec 2 – Dec 15, 2020)



TRENDS IN COVID-19 CASES AMONG DEMOGRAPHIC GROUPS (14 DAY PERIODS)

Fig. 11. Trends in Geographic distribution of COVID-19 Cases in Fulton County by 14-day periods



*North - Includes all Fulton cities north of Atlanta (Alpharetta, Johns Creek, Milton, Mountain Park, Roswell, Sandy Springs)

*South - Includes all Fulton cities south of Atlanta (College Park, Chattahoochee Hills, East Point, Fairburn, Hapeville, Palmetto, South Fulton, and Union City)

Fig. 12. Trends in Racial Distribution of COVID-19 Cases in Fulton County by 14-day periods

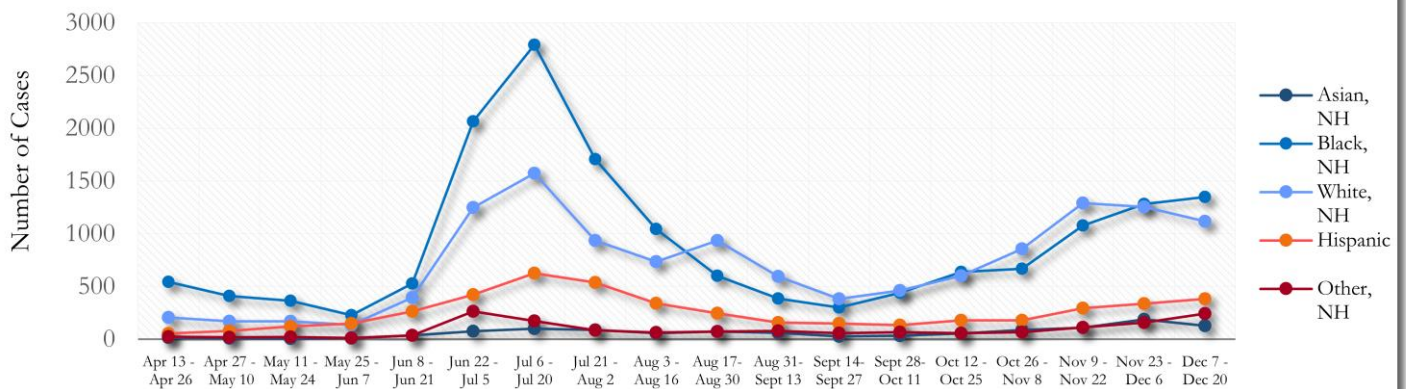
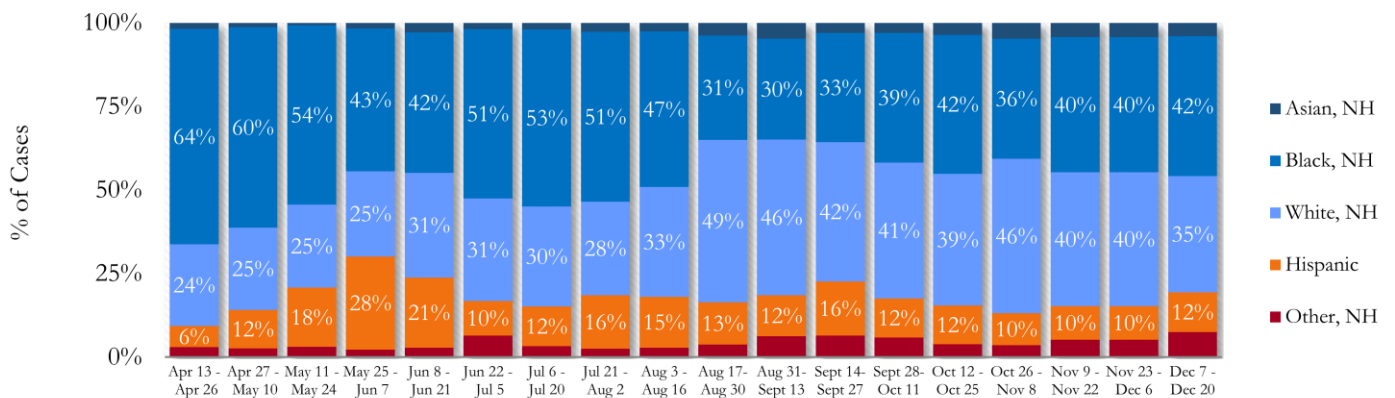


Fig. 13. Racial Distribution of COVID-19 Cases in Fulton County by 14-day periods



About 16% of COVID cases are missing data on patient race and ethnicity. The majority of new cases in the past two weeks were Black, NH (42%) and White, NH (35%).

Fig. 14. Trends in Gender Distribution of COVID-19 Cases in Fulton County by 14-day periods

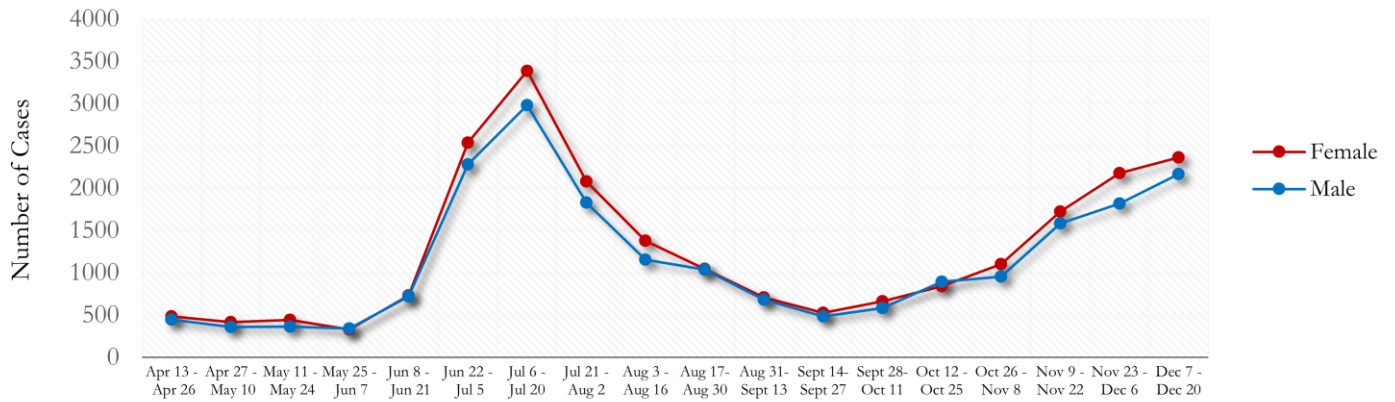
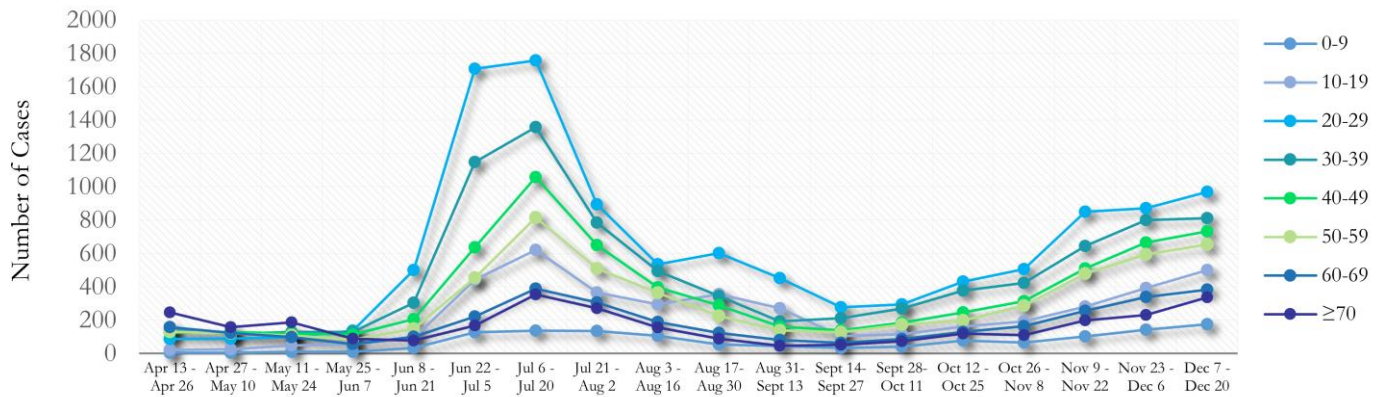
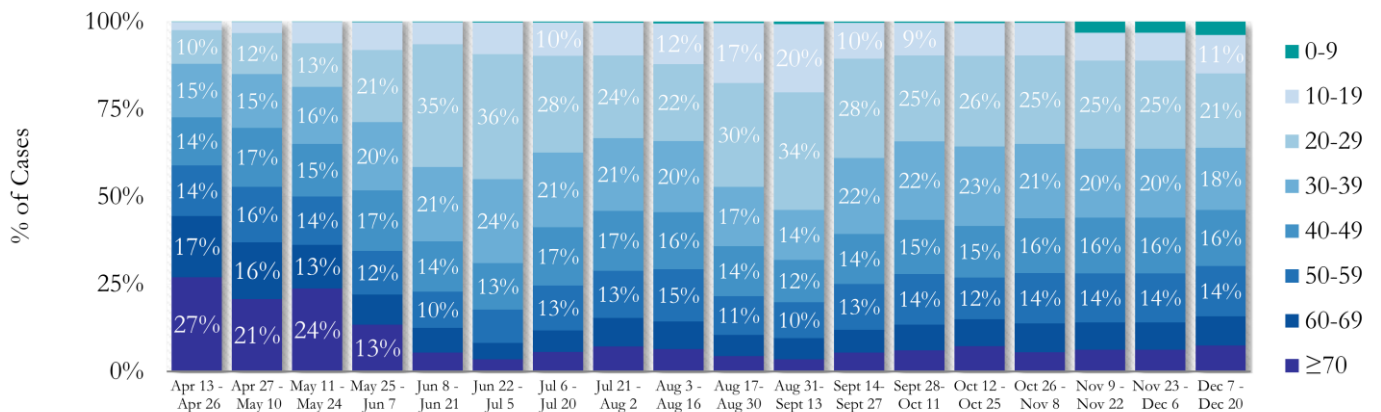


Fig. 15. Trends in Age Distribution of COVID-19 Cases in Fulton County by 14-day periods



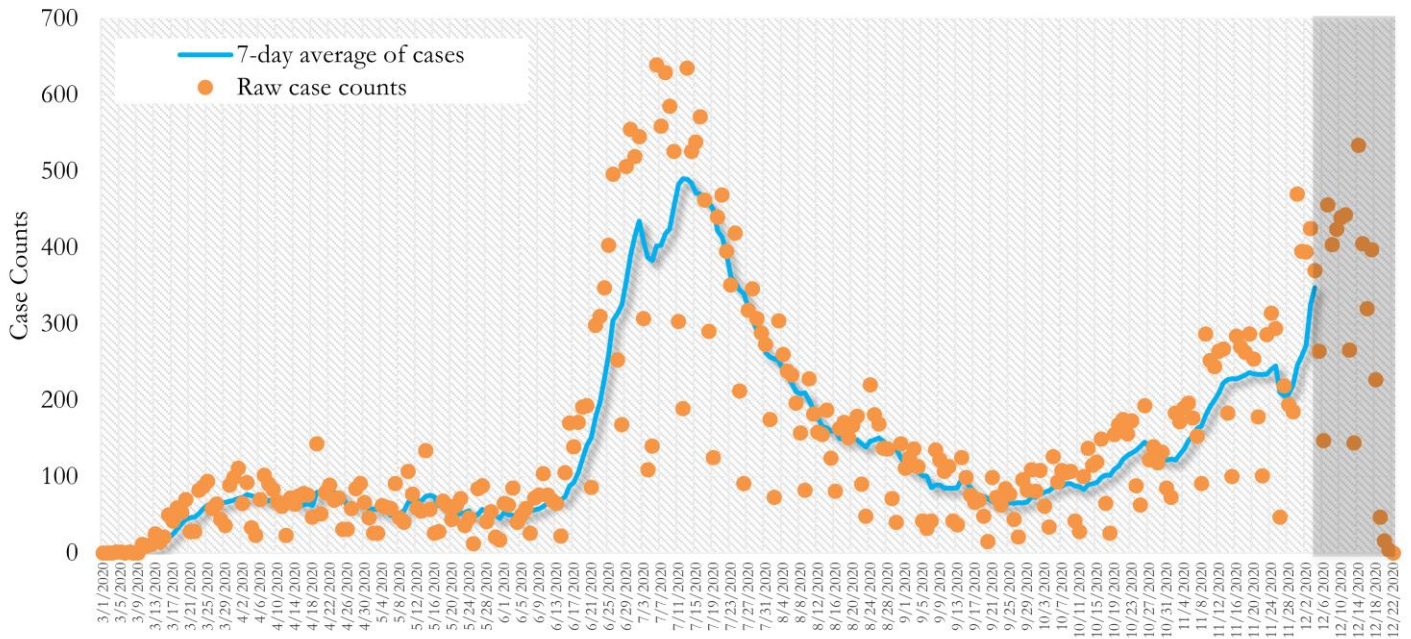
Earlier (March-May 2020) large proportions of reported cases were among persons aged 60 and older. In the most recent two weeks, 20-29 year olds accounted for the highest number of new cases among all age groups, followed by 30-39 year olds.

Fig. 16. Age Distribution of COVID-19 Cases in Fulton County by 14-day periods



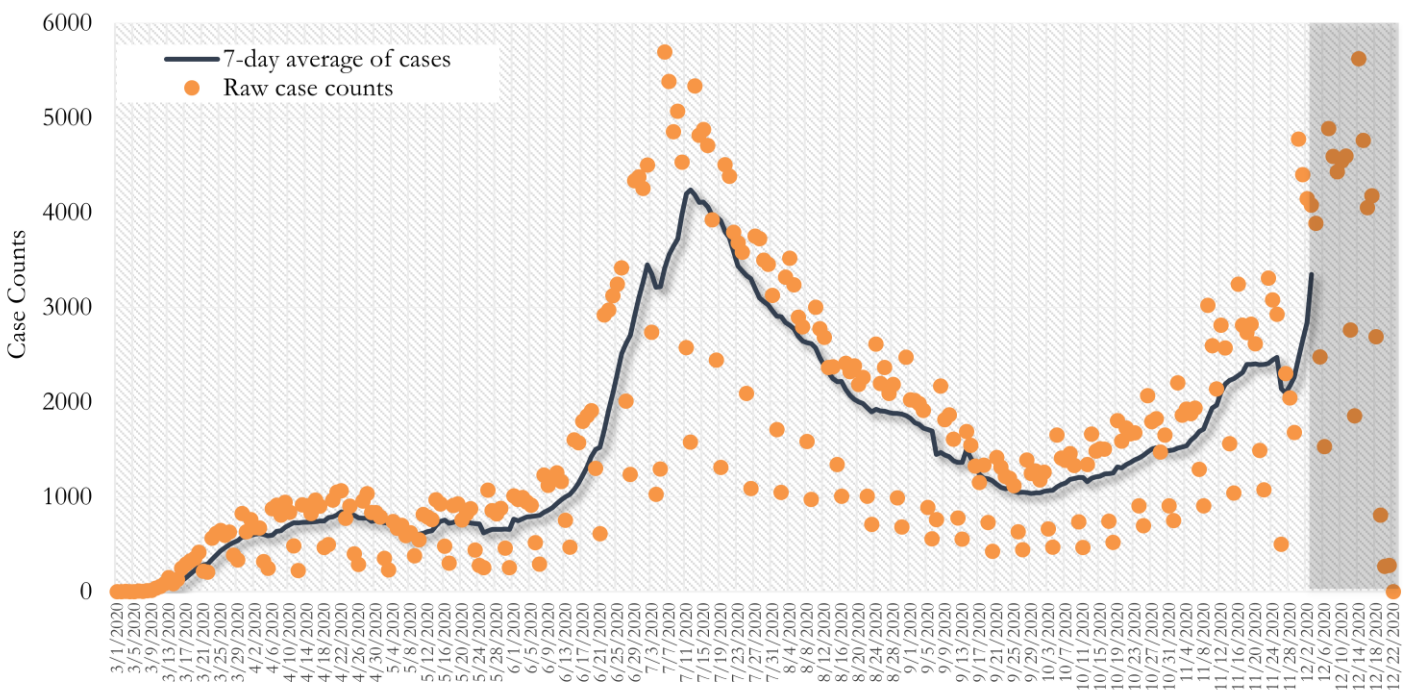
TRENDS IN COVID-19 CASES, HOSPITALIZATIONS AND DEATHS (7-DAY MOVING AVE.)

Fig. 17. New COVID-19 Cases in Fulton County Daily (Averaged over 7 days)



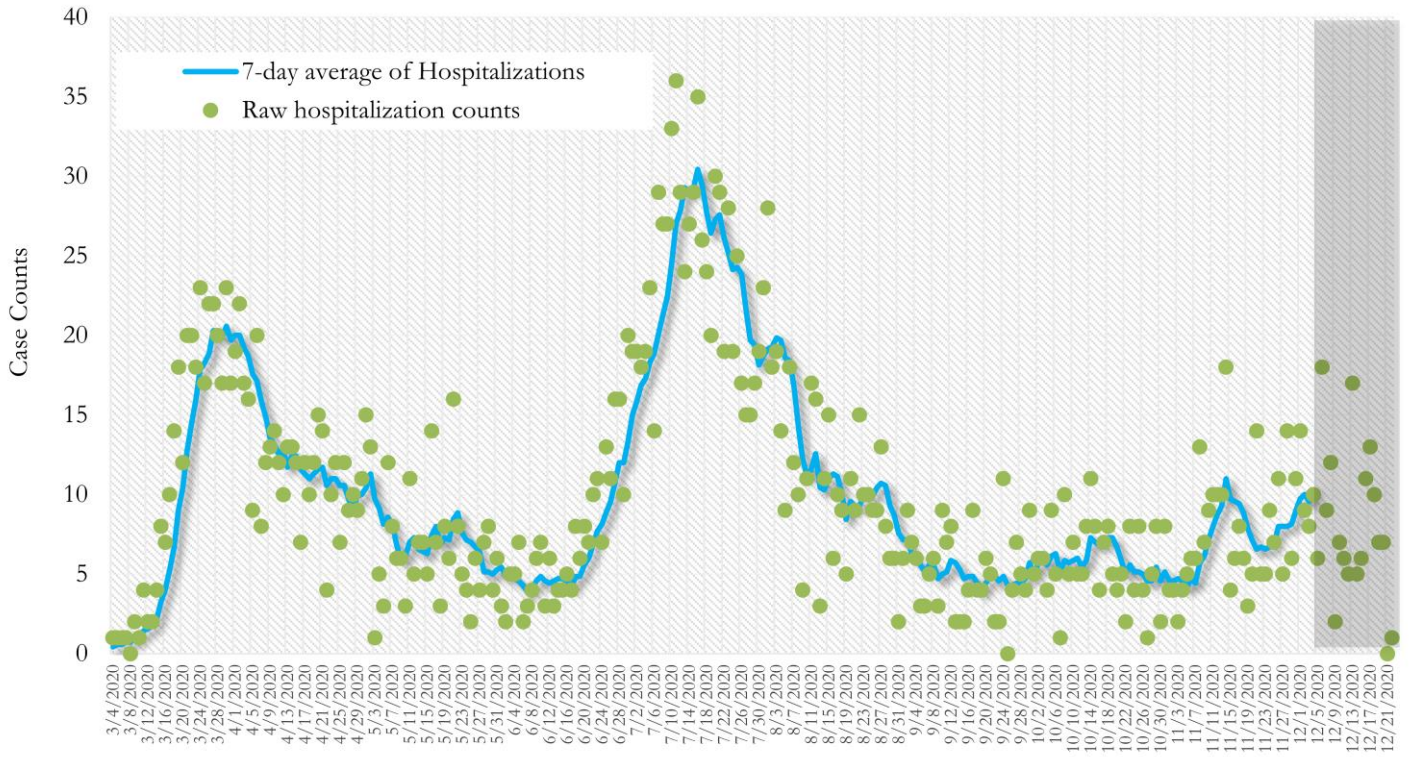
*Date of collection of first positive sample used (report creation date used where sample collection date is missing). Graph above reflects the trend in COVID-19 diagnosis. Due to the high volume of testing in recent weeks, there have been delays in reporting lab results. Thus, the trend is subject to change as more lab results get added to the state surveillance database.

Fig. 18. New COVID-19 Cases in Georgia State Daily (Averaged over 7 days)



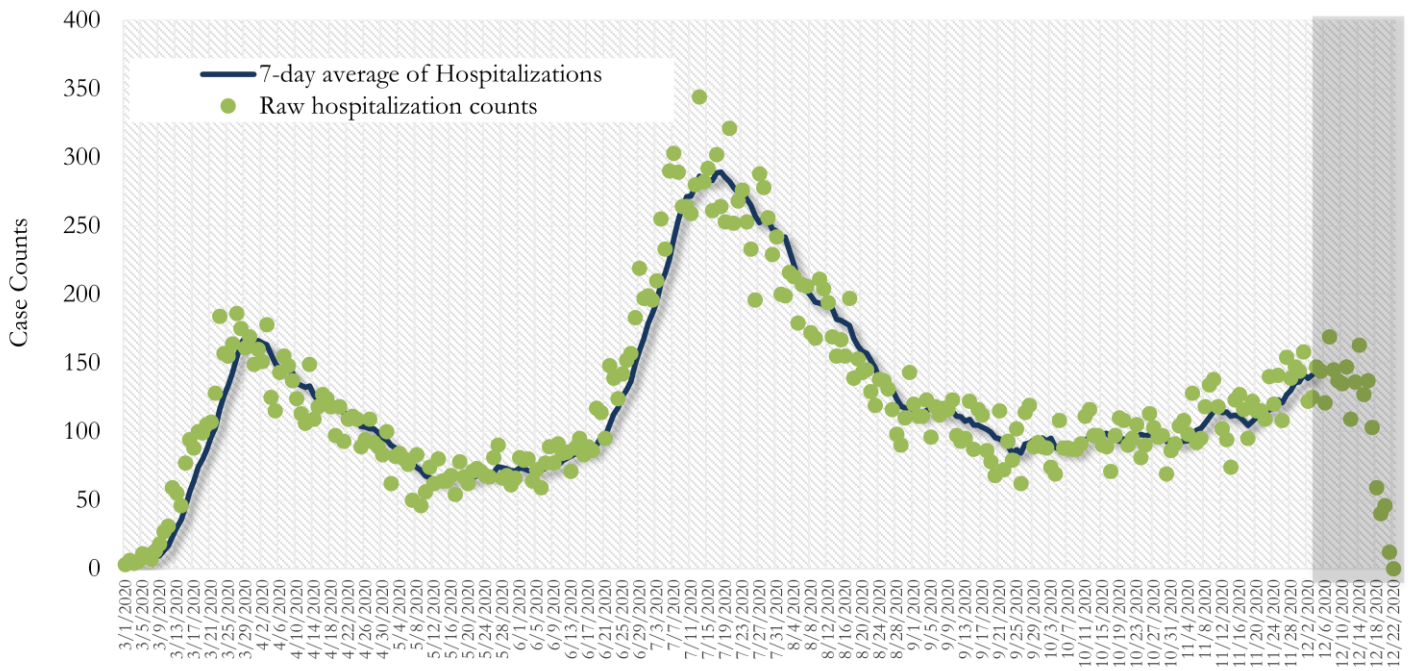
*Date of collection of first positive sample used (report creation date used where sample collection date is missing). Graph above reflects the trend in COVID-19 diagnosis. Due to the high volume of testing in recent weeks, there have been delays in reporting lab results. Thus, the trend is subject to change as more lab results get added to the state surveillance database.

Fig. 19. COVID-19 Hospitalizations in Fulton County Daily (Averaged over 7 days)



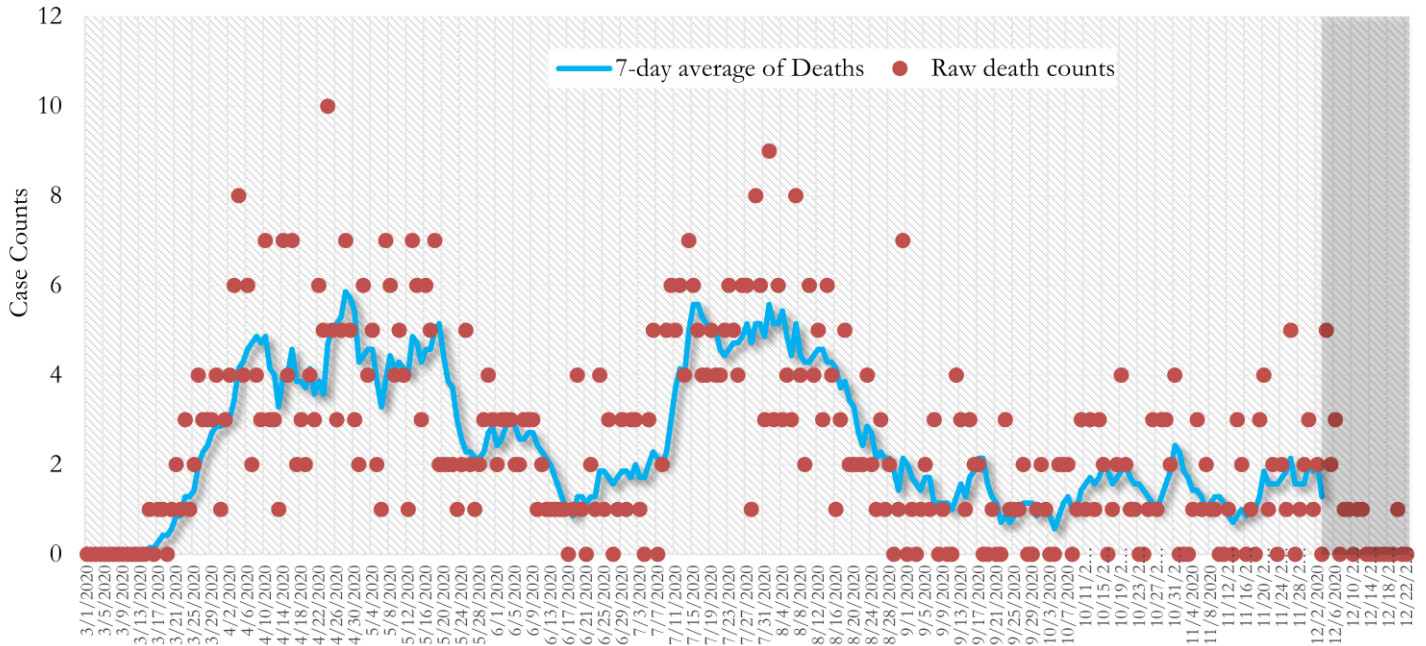
*Reported date of hospital admission used. Graph above reflects the trend in COVID-19 hospitalizations. Due to the high volume of new cases being added daily, there have been delays in reporting hospitalization data. Thus, the trend is likely to change as more hospitalization data is reported in the state surveillance database.

Fig. 20. COVID-19 Hospitalizations in Georgia State Daily (Averaged over 7 days)



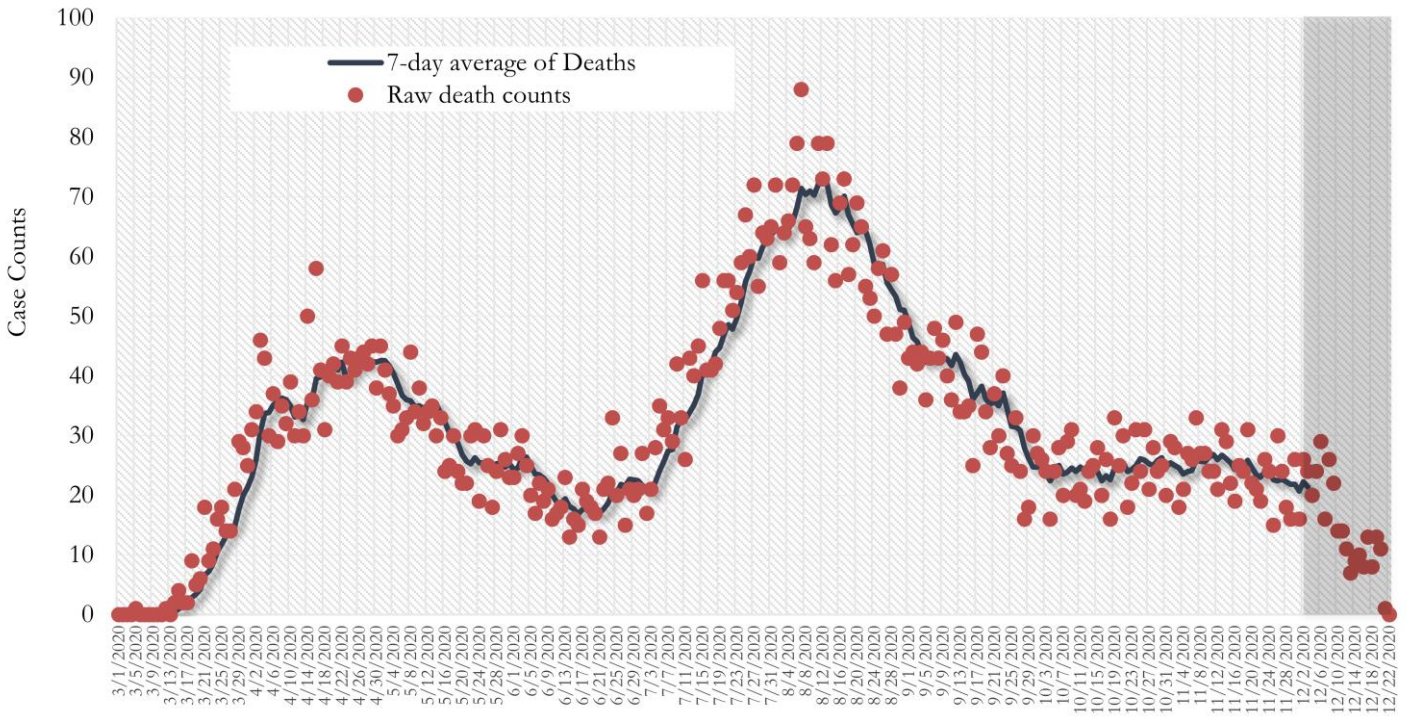
*Reported date of hospital admission used. Graph above reflects the trend in COVID-19 hospitalizations. Due to the high volume of new cases being added daily, there have been delays in reporting hospitalization data. Thus, the trend is likely to change as more hospitalization data is reported in the state surveillance database.

Fig. 21. COVID-19 Deaths in Fulton County Daily (Averaged over 7 days)



* Reported date of death used. Graph above reflects the trend in deaths attributed to COVID-19. The trend is likely to change as more data on deaths among persons with COVID-19 is reported in the state surveillance database.

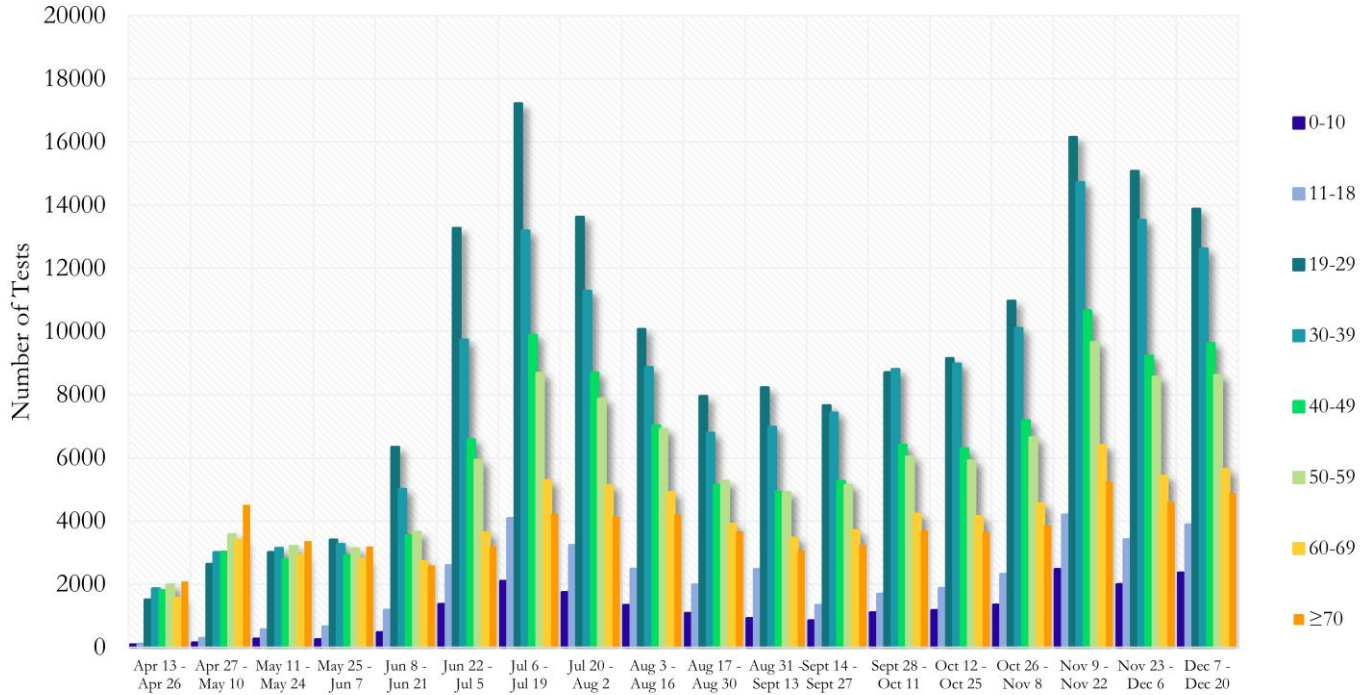
Fig. 22. COVID-19 Deaths in Georgia State Daily (Averaged over 7 days)



* Reported date of death used. Graph above reflects the trend in deaths attributed to COVID-19. The trend is likely to change as more data on deaths among persons with COVID-19 is reported in the state surveillance database.

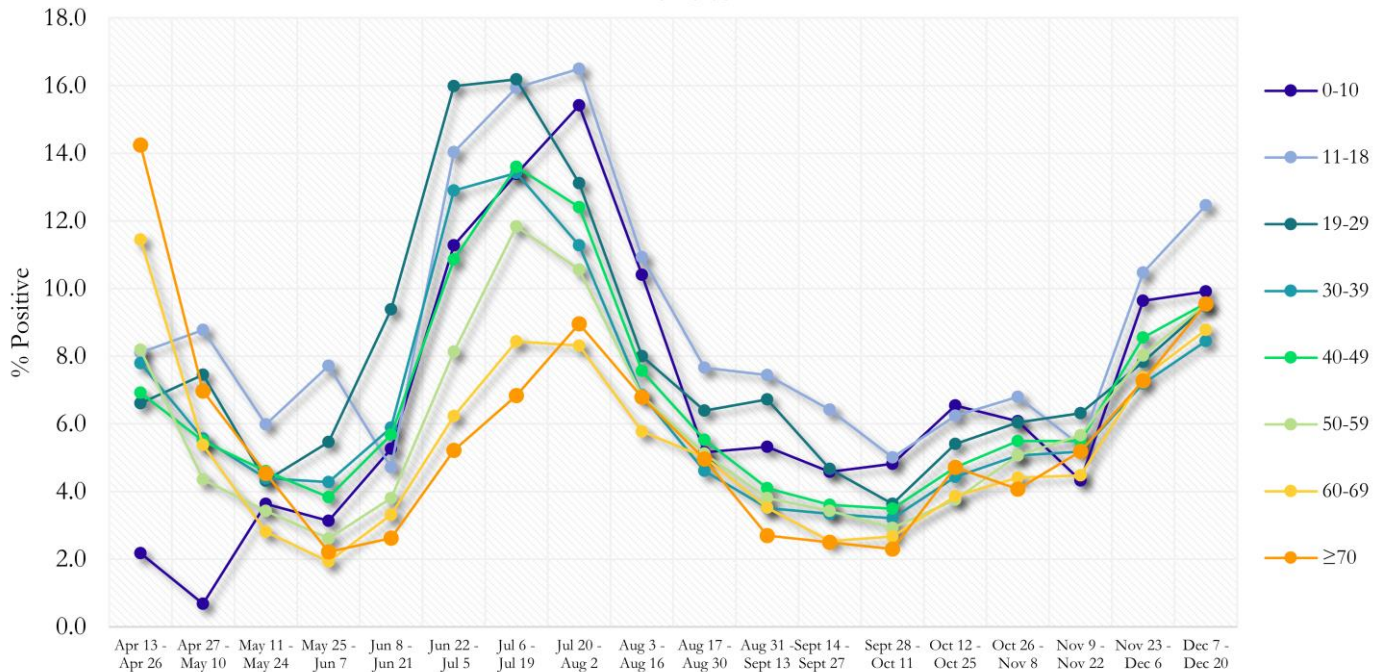
COVID-19 TESTING AND POSITIVITY IN FULTON COUNTY BY AGE AND RACE

Fig. 23. COVID-19 Tests by Age in Fulton County by 14-day Periods



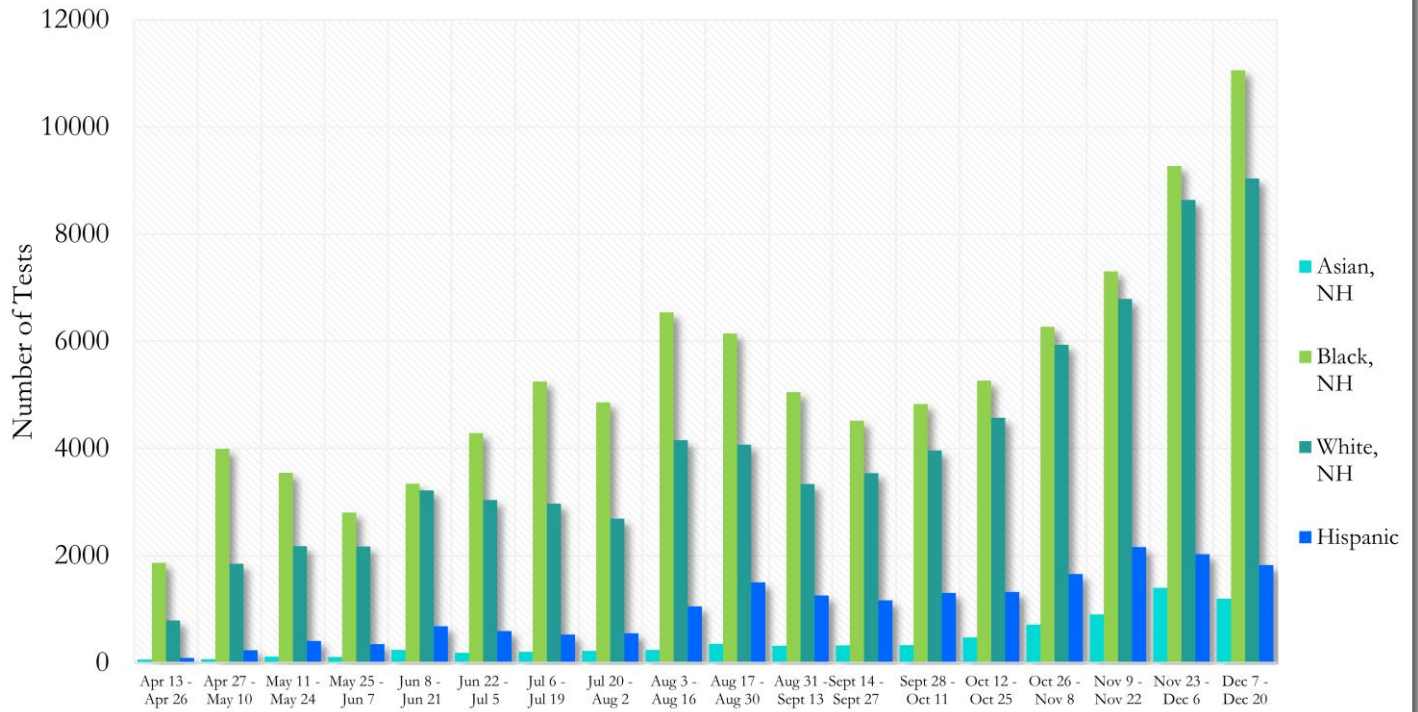
*Data on Polymerase Chain Reaction (PCR) tests only included.

Fig. 24. Percent Positive COVID-19 Tests by Age Group in Fulton County by 14-day Periods



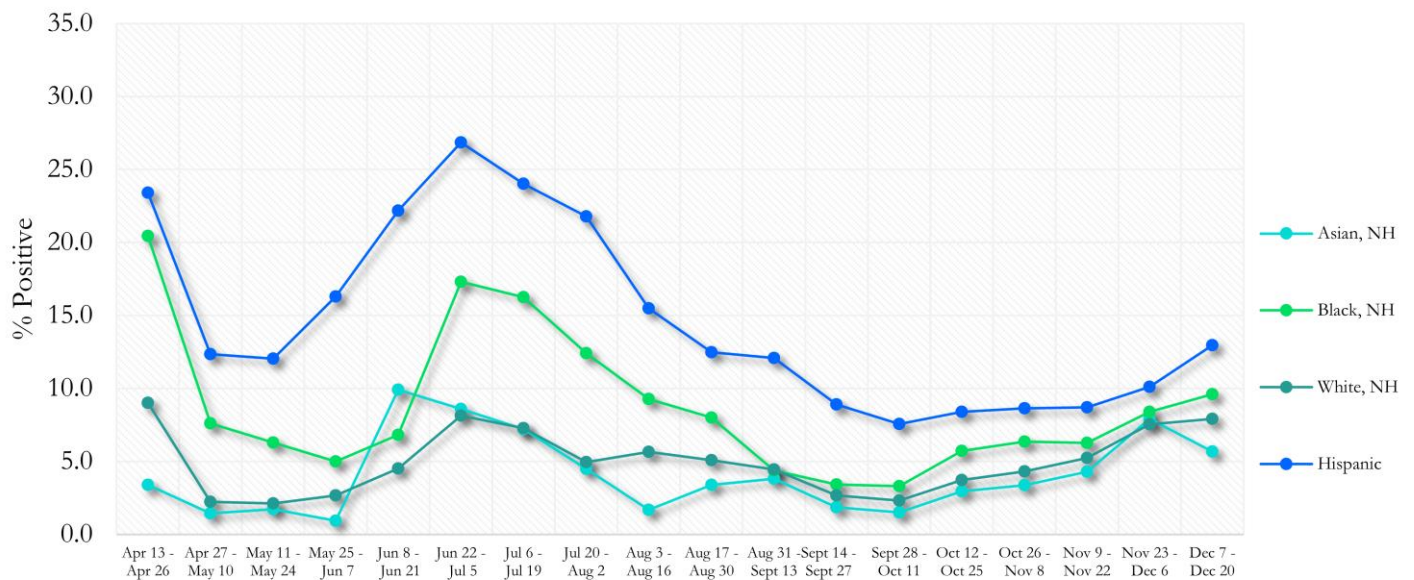
*Data on Polymerase Chain Reaction (PCR) tests only included.

Fig. 25. COVID-19 Tests by Race and Ethnicity in Fulton County by 14-day Periods



*Data on Polymerase Chain Reaction (PCR) tests only included.

Fig. 26. Percent Positive COVID-19 Tests by Race and Ethnicity in Fulton County by 14-day Periods



*Data on Polymerase Chain Reaction (PCR) tests only included.

COVID-19 CASE COUNTS BY ZIP CODE

	Prior (12/18/20)	Current Total (12/22/20)		New Cases (Period: 11/18/20 – 12/15/20) ¹		
	Count	Count	%	Recent 14 d. (Dec 2- Dec 15)	Prior 14 d. (Nov 18- Dec 1)	% change ²
All Fulton	44347	45909	100%	5580	3427	↑ 62.8%
30004	1673	1746	3.8%	241	188	↑ 28.2%
30005	1019	1079	2.4%	203	133	↑ 52.6%
30009	811	839	1.8%	131	76	↑ 72.4%
30022	2242	2355	0.9%	386	244	↑ 58.2%
30023	12	13	<0.1%	<10	<10	-
30024	38	39	<0.1%	10	<10	↑ 150.0%
30075	1715	1770	3.9%	203	129	↑ 57.4%
30076	1724	1792	3.9%	232	125	↑ 85.6%
30080	<10	<10	<0.1%	0	<10	↓ 100.0%
30097	635	673	1.5%	123	76	↑ 61.8%
30098	-	-	-	0	0	-
30135	<10	<10	<0.1%	0	0	-
30138	<10	<10	<0.1%	0	0	-
30139	-	-	-	0	0	-
30213	1669	1731	3.8%	192	112	↑ 71.4%
30268	281	298	0.6%	41	17	↑ 141.2%
30291	1158	1210	2.6%	132	82	↑ 61.0%
30296	116	120	0.3%	19	18	↑ 5.6%
30301	15	18	<0.1%	<10	<10	-
30303	481	488	1.1%	34	18	↑ 88.9%
30305	1386	1450	3.2%	203	139	↑ 46.0%
30306	603	624	1.4%	67	66	↑ 1.5%
30307	298	311	0.7%	39	21	↑ 85.7%
30308	969	990	2.2%	103	86	↑ 19.8%
30309	1388	1431	3.1%	159	124	↑ 28.2%
30310	1080	1123	2.4%	131	55	↑ 138.2%
30311	1155	1180	2.6%	149	65	↑ 129.2%
30312	1266	1308	2.8%	134	100	↑ 34.0%
30313	410	415	0.9%	31	22	↑ 40.9%
30314	775	797	1.7%	81	39	↑ 107.7%
30315	1371	1430	3.1%	186	97	↑ 91.8%
30316	557	572	1.2%	55	38	↑ 44.7%
30318	2623	2717	5.9%	304	169	↑ 79.9%
30319	258	269	0.6%	35	24	↑ 45.8%
30321	13	13	<0.1%	<10	<10	-
30324	1383	1408	3.1%	124	103	↑ 20.4%
30326	453	472	1.0%	56	50	↑ 12.0%
30327	1051	1098	2.4%	166	78	↑ 112.8%
30328	1511	1573	3.4%	250	133	↑ 88.0%
30331	2442	2539	5.5%	243	141	↑ 72.3%
30334	14	14	<0.1%	<10	0	-
30336	118	120	0.3%	<10	<10	-
30337	495	500	1.1%	44	27	↑ 63.0%
30338	114	117	0.3%	<10	10	↓ 10.0%
30339	313	310	0.7%	30	<10	↑ 275.0%
30340	37	36	<0.1%	<10	<10	-
30341	38	37	<0.1%	<10	<10	-
30342	1842	1886	4.1%	234	124	↑ 88.7%
30344	1356	1390	3.0%	156	96	↑ 62.5%
30345	27	26	<0.1%	0	0	-

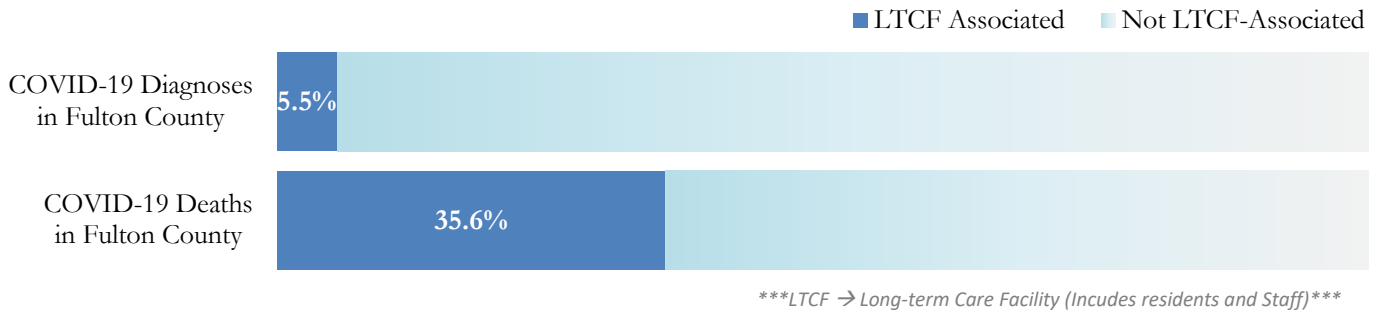
30349	2595	2679	5.8%	272	137	↑ 98.5%
30350	1170	1222	2.7%	198	129	↑ 53.5%
30354	640	658	1.4%	62	50	↑ 24.0%
30358	<10	<10	<0.1%	<10	0	-
30363	118	122	0.3%	15	13	↑ 15.4%
30374	36	36	<0.1%	<10	<10	-
30606	<10	<10	<0.1%	0	0	-
31131	<10	<10	<0.1%	<10	0	-
31150	<10	<10	<0.1%	0	0	-
Unknown	2393	843	1.8%	76	41	-

¹**New cases:** Cases diagnosed in most recent 28 days (based on reported dates of positive sample collection). To allow for lag in reporting results of new diagnoses from samples collected in the most recent week, data used for incident diagnoses analyses were moved back by one week. ²**Percent change:** These reflect the percentage increase or decrease of new diagnoses between the 14 days preceding the past 7 days and the 14 days preceding that. Changes in ZIP codes with less than 10 cases in both 2 week intervals are not reported**Data cleaning (either during case interviews or address geo-coding) may lead to reassignment of few cases from one territory to another based on their corrected addresses. These may appear as “decreases” when compared to the previous day’s count. These do not reflect errors in the data collection or analysis process but only reflect the minor day-to-day fluctuations in case counts that arise in an evolving public health database like COVID’s. **Note:** Sharp increases in territorial COVID case counts often reflect new cases diagnosed at long term care facilities located in those territories during facility-wide /mass screening events **All data reported are preliminary and subject to change.**

COVID-19 IN LONG-TERM CARE FACILITIES IN FULTON COUNTY

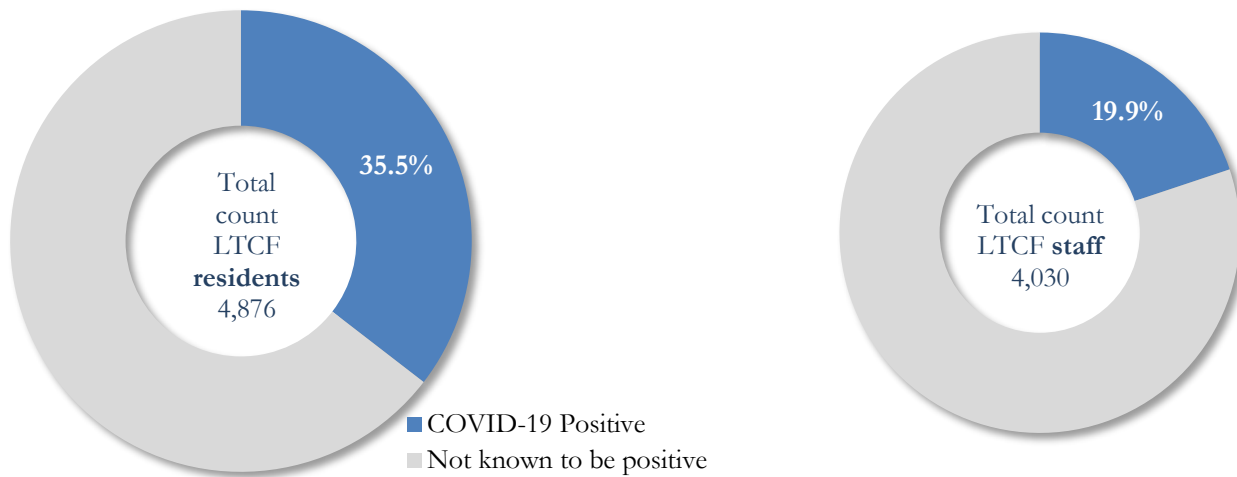
Older persons (aged 65 years and older) and persons who live in nursing homes or other long-term care facilities seem to be at higher risk for developing more serious complications from COVID-19. Extra precautions are recommended for individuals within this risk groups – Centers for Disease Control and Prevention (CDC 2020) <https://www.cdc.gov/coronavirus/2019-ncov/need-extra-precautions/people-at-higher-risk.html>

Fig. 27. COVID-19 Diagnoses and Deaths in Fulton County Associated with Long-Term Care Facilities



COVID-19 POSITIVITY:

Fig. 28. COVID-19 Positivity at 64 reporting Long-Term Care Facilities (LTCF) in Fulton County



COVID-19 Cases, Hospitalizations, and Deaths among 64 reporting Long-Term Care Facilities in Fulton County

	LTCF Residents (n=4,876)			LTCF Staff (n=4,030)		
	Cases	Hospitalizations	Deaths	Cases	Hospitalizations	Deaths
Average (count per fac.) ¹	27	5	4	13	1	<0.1
Median (count per fac.) ¹	11	3	1	9	0	0
Lowest counts	0	0	0	0	0	0
Highest counts	139	48	30	70	8	2
Total Count	1729 (35.5%) ^a	337 (19.5%) ^b	250 (14.5%) ^b	801 (19.9%) ^a	33 (4.1%) ^b	5 (<1.0%) ^b

^a Percentage shown reflects proportion of total residents/staff tested who were positive (i.e. COVID-19 Positivity). | ^b Percentages shown are proportions of persons residents/staff diagnosed with COVID-19 who were hospitalized or died after diagnoses.