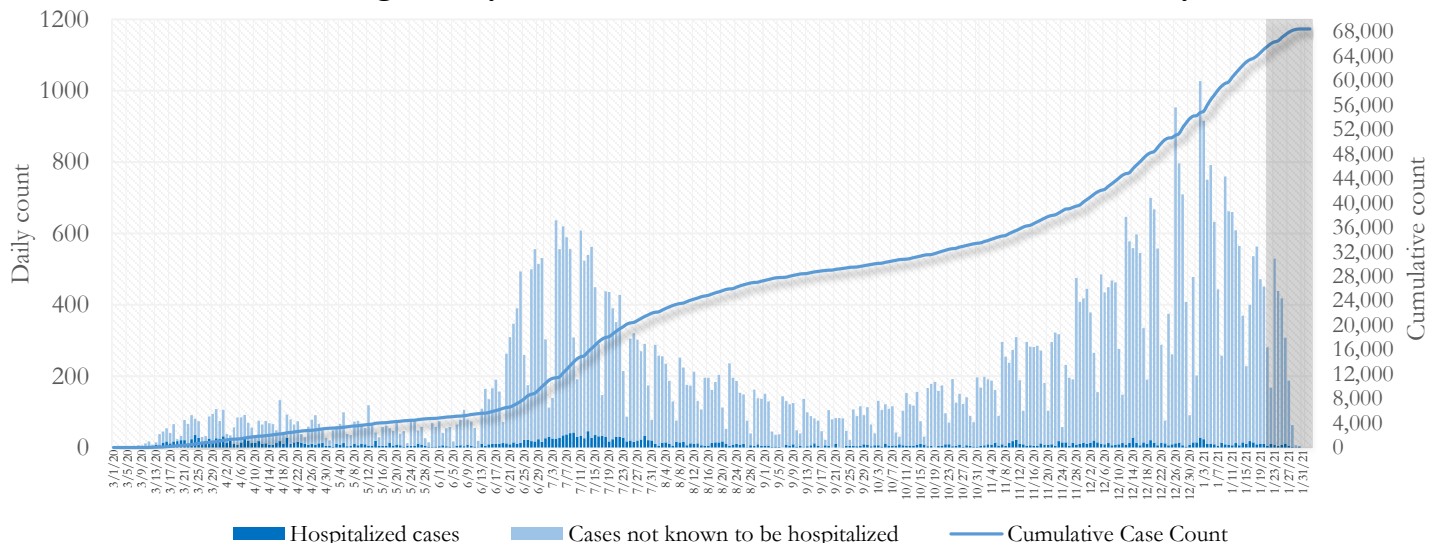


SUMMARY

- As of February 2, 2021, Fulton County has recorded **68,404 cases of the 2019 novel coronavirus (COVID-19)** and **904 confirmed COVID-19 deaths**. 122 deaths are currently being reviewed by GA DPH to confirm cause of death.
- Of **6,936 new diagnoses** made between January 13 and 26, the central portion of the county (Atlanta) accounted for 40% while the northern and southern parts accounted for 37% and 20% respectively.
- By city, new COVID-19 case rates range from 482.8 per 100,000 persons (College Park) to 1030.5 per 100,000 persons (Union City). [**Fulton County Diagnoses Rates (per 100,000 persons): Cumulative – 6223.2; Incidence –631.0**]. See map showing incident case rate by ZIP code on Pg.12.
- Among all persons diagnosed with COVID-19 in Fulton County since July 1, **4.3% required hospitalization and 1.0% died**.
- Of all testing done in Fulton County between January 18 and January 31, the **percent positivity rate was 10.8%**.

Fig 1. Daily and Cumulative COVID-19 cases in Fulton County, GA



*Counts shown reflect the number of confirmed cases as of 9:30 pm on 2/1/21 using the date of first positive sample collection. Where date of sample collection was not available or missing, the date of report creation in GA SENDSS was used instead. **Note:** Delays in data reporting may cause changes in data counts, particularly in the shaded portion. Data throughout this report are preliminary and subject to ongoing data cleaning processes, and thus are subject to change.

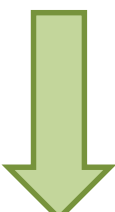
DISTRIBUTION OF COVID-19 CASES BY REGION

New cases: 40% of the new COVID-19 cases in the past 2 weeks occurred in Atlanta while 37% and 20% occurred in the Northern and Southern regions of the county respectively.

Fulton Region	% Cumulative count	% New cases*
Atlanta	42.2%	39.7%
North ¹	34.3%	36.8%
South ²	19.2%	20.3%
Unincorporated/Unknown	4.3%	3.2%

¹Includes all Fulton County cities north of Atlanta (Alpharetta, Johns Creek, Milton, Mountain Park, Roswell, Sandy Springs,) |²Includes all cities south of Atlanta (Chattahoochee Hills, College Park, East Point, Fairburn, Hapeville, Palmetto, South Fulton, and Union City) ***New cases:** Cases diagnosed in the past 2 weeks only (between 1/13/21 – 1/26/21).

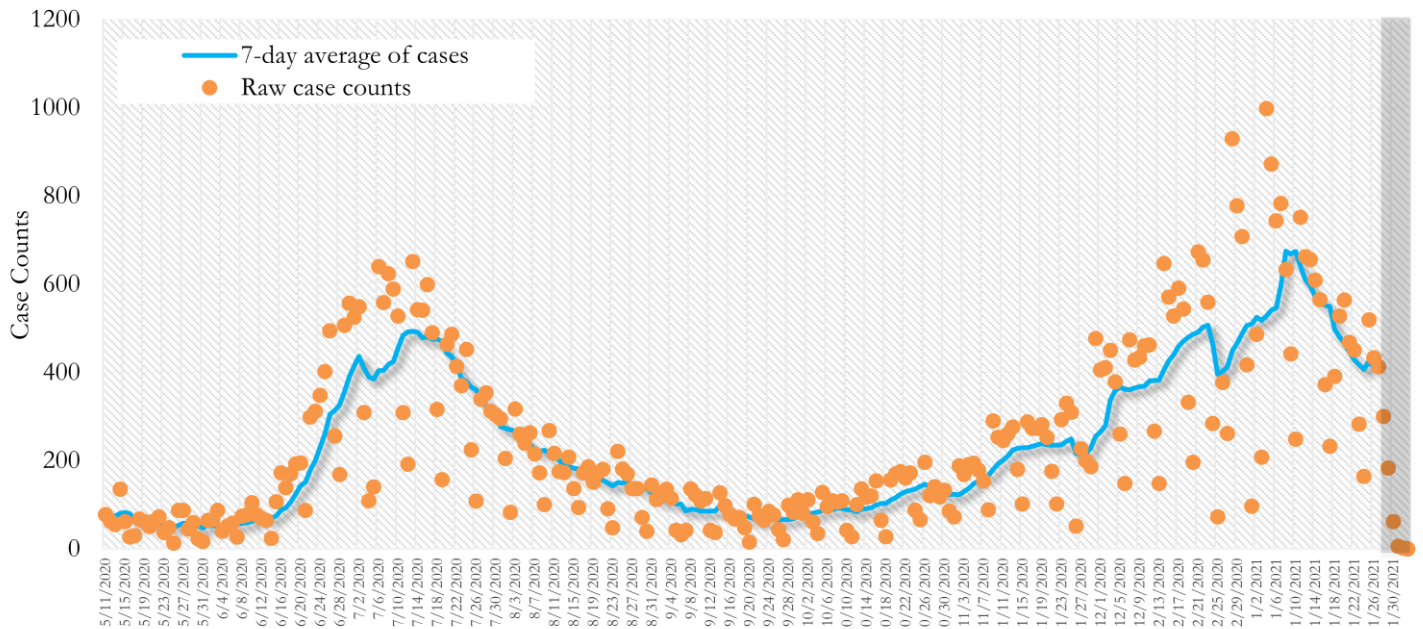
In the recent two week reporting period (1/13-1/26), there were fewer new cases of COVID-19 in Fulton County than the previous two weeks (12/30-1/12).



**Delayed a week to account for testing results turnaround time.*

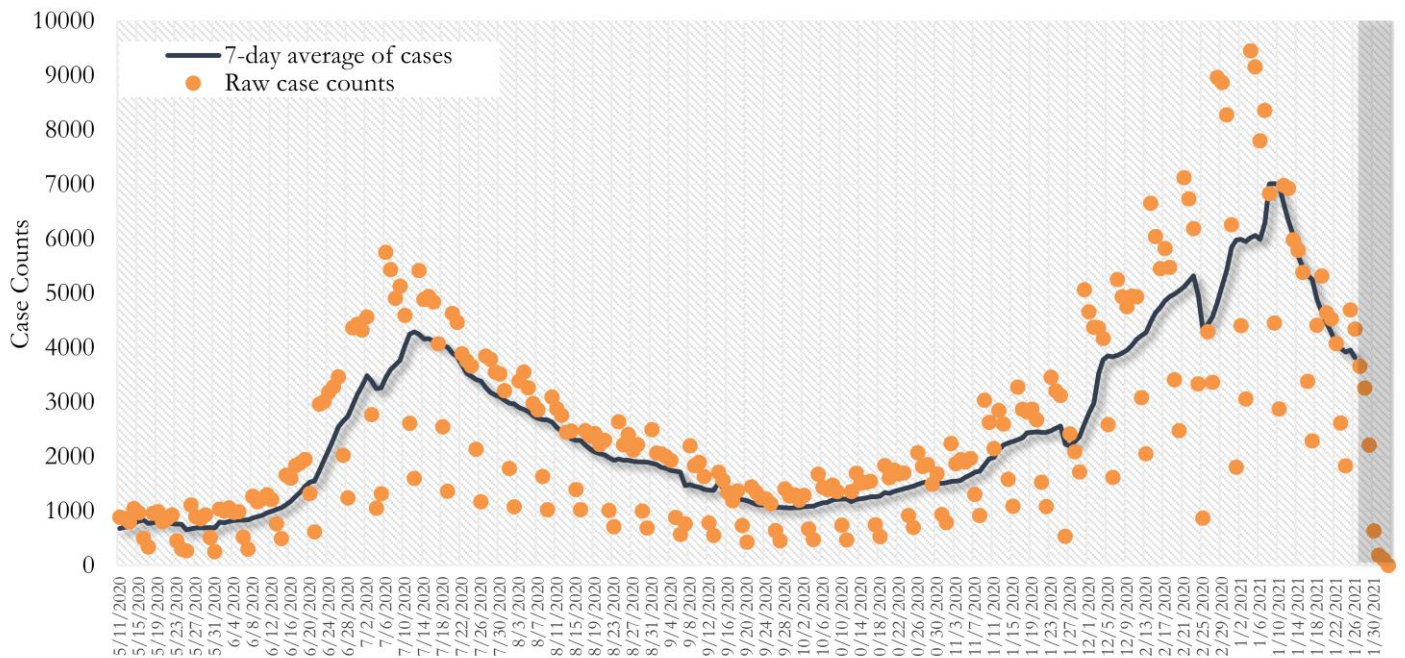
TRENDS IN COVID-19 CASES, HOSPITALIZATIONS AND DEATHS (7-DAY MOVING AVE.)

Fig. 2. New COVID-19 Cases in Fulton County Daily (Averaged over 7 days)



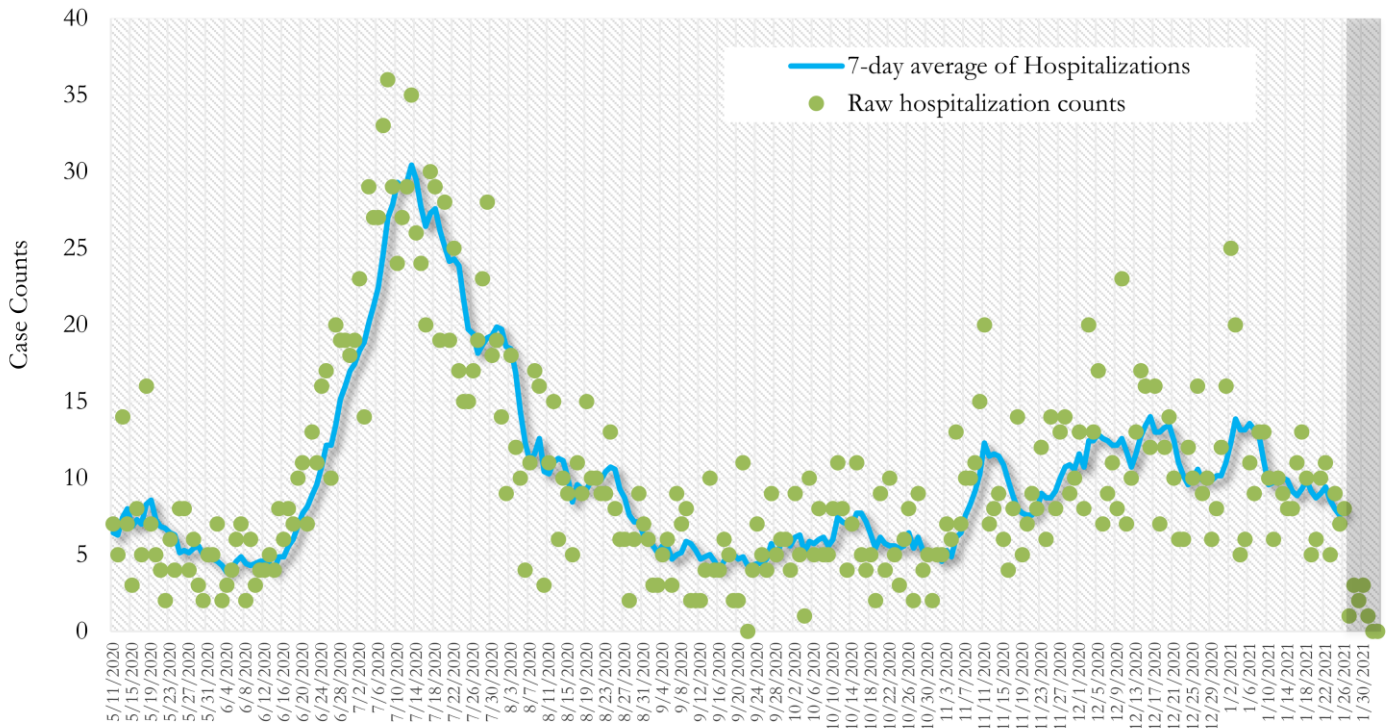
*Date of collection of first positive sample used (report creation date used where sample collection date is missing). Graph above reflects the trend in COVID-19 diagnosis. Due to the high volume of testing in recent weeks, there have been delays in reporting lab results. Thus, the trend is subject to change as more lab results get added to the state surveillance database.

Fig. 3. New COVID-19 Cases in Georgia State Daily (Averaged over 7 days)



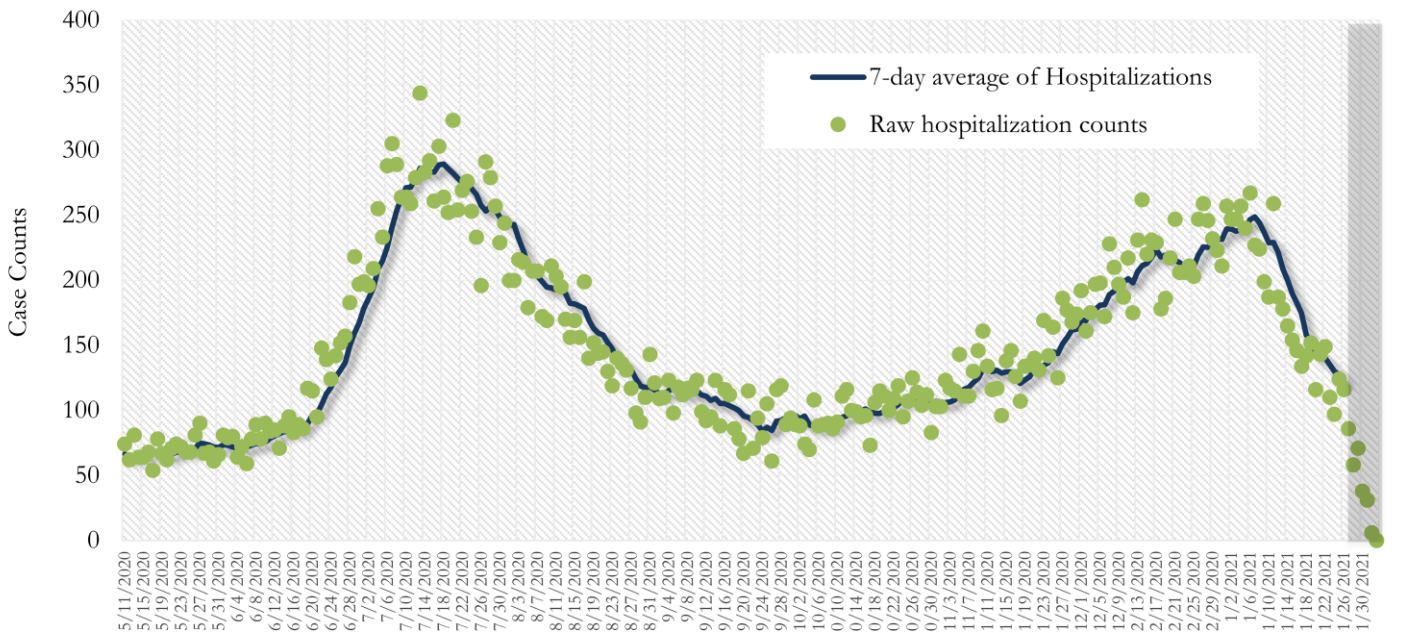
*Date of collection of first positive sample used (report creation date used where sample collection date is missing). Graph above reflects the trend in COVID-19 diagnosis. Due to the high volume of testing in recent weeks, there have been delays in reporting lab results. Thus, the trend is subject to change as more lab results get added to the state surveillance database.

Fig. 4. COVID-19 Hospitalizations in Fulton County Daily (Averaged over 7 days)



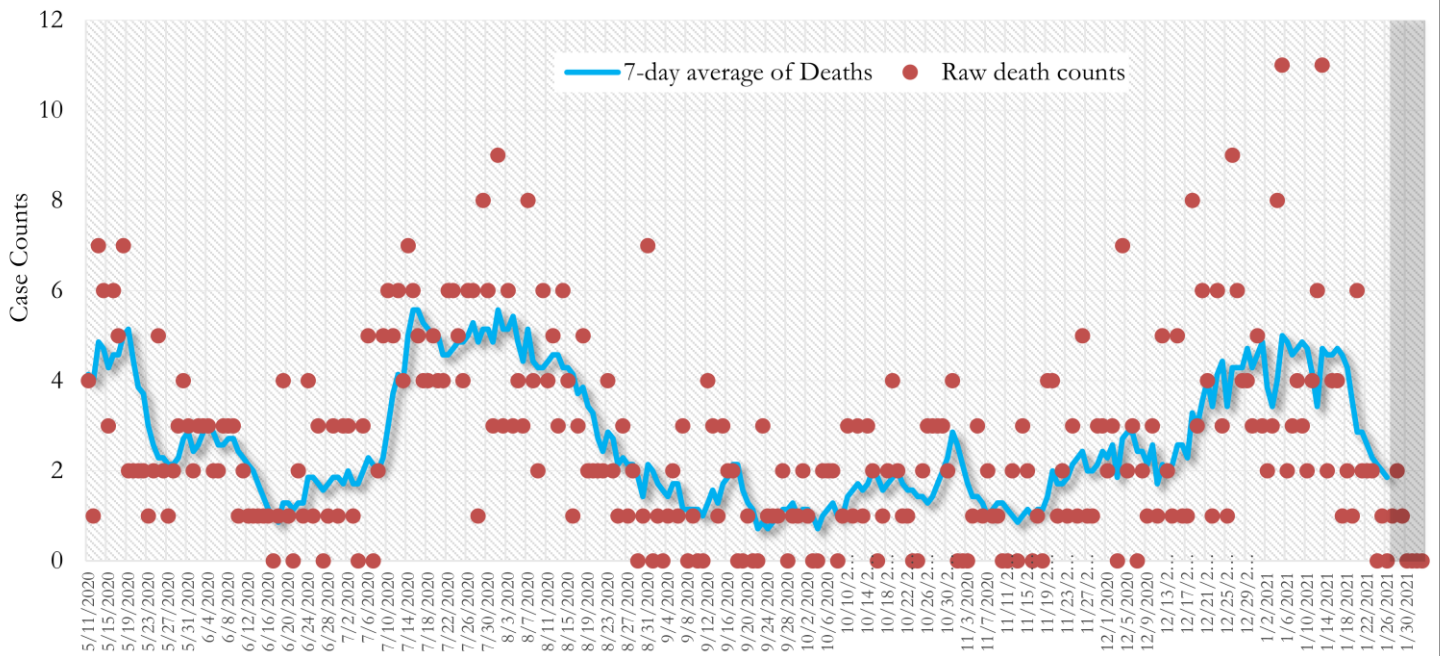
*Reported date of hospital admission used. Graph above reflects the trend in COVID-19 hospitalizations. Due to the high volume of new cases being added daily, there have been delays in reporting hospitalization data. Thus, the trend is likely to change as more hospitalization data is reported in the state surveillance database.

Fig. 5. COVID-19 Hospitalizations in Georgia State Daily (Averaged over 7 days)



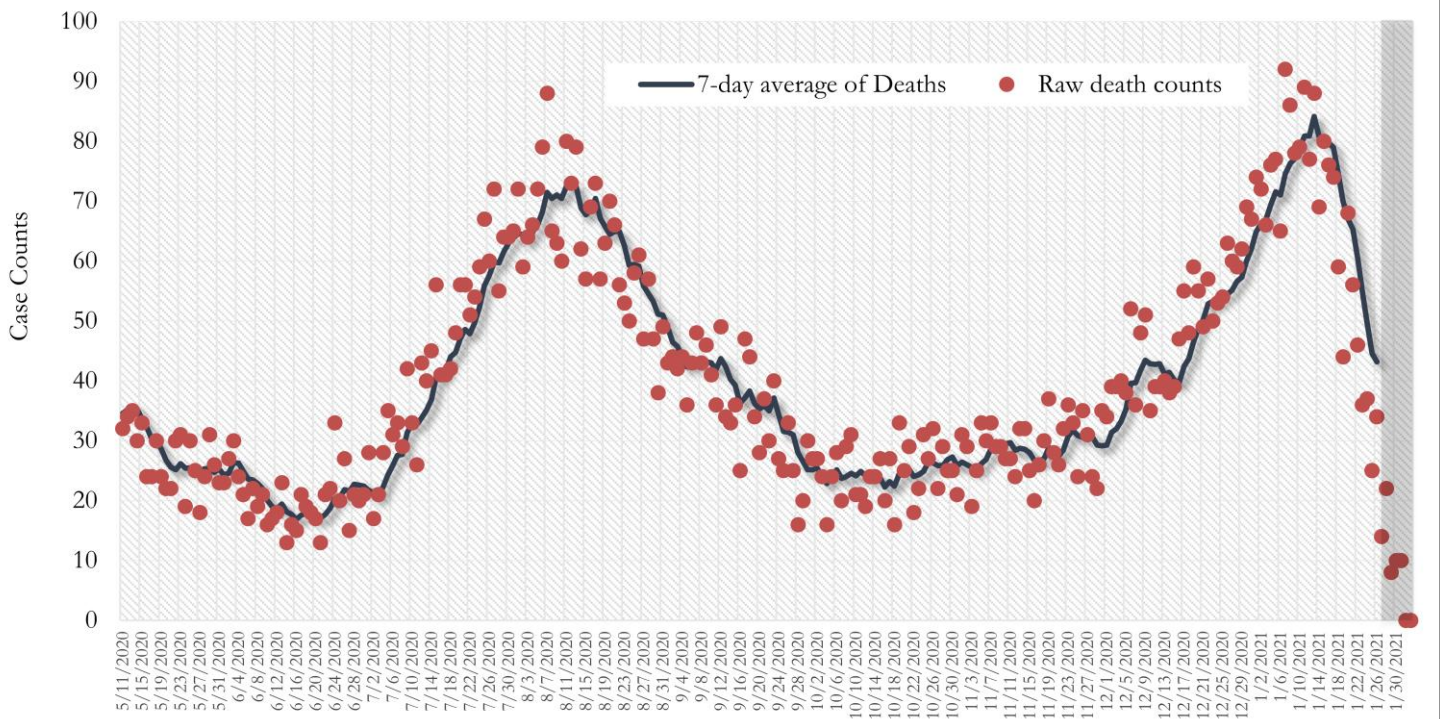
*Reported date of hospital admission used. Graph above reflects the trend in COVID-19 hospitalizations. Due to the high volume of new cases being added daily, there have been delays in reporting hospitalization data. Thus, the trend is likely to change as more hospitalization data is reported in the state surveillance database.

Fig. 6. COVID-19 Deaths in Fulton County Daily (Averaged over 7 days)



*Reported date of death used. Graph above reflects the trend in deaths attributed to COVID-19. The trend is likely to change as more data on deaths among persons with COVID-19 is reported in the state surveillance database.

Fig. 7. COVID-19 Deaths in Georgia State Daily (Averaged over 7 days)



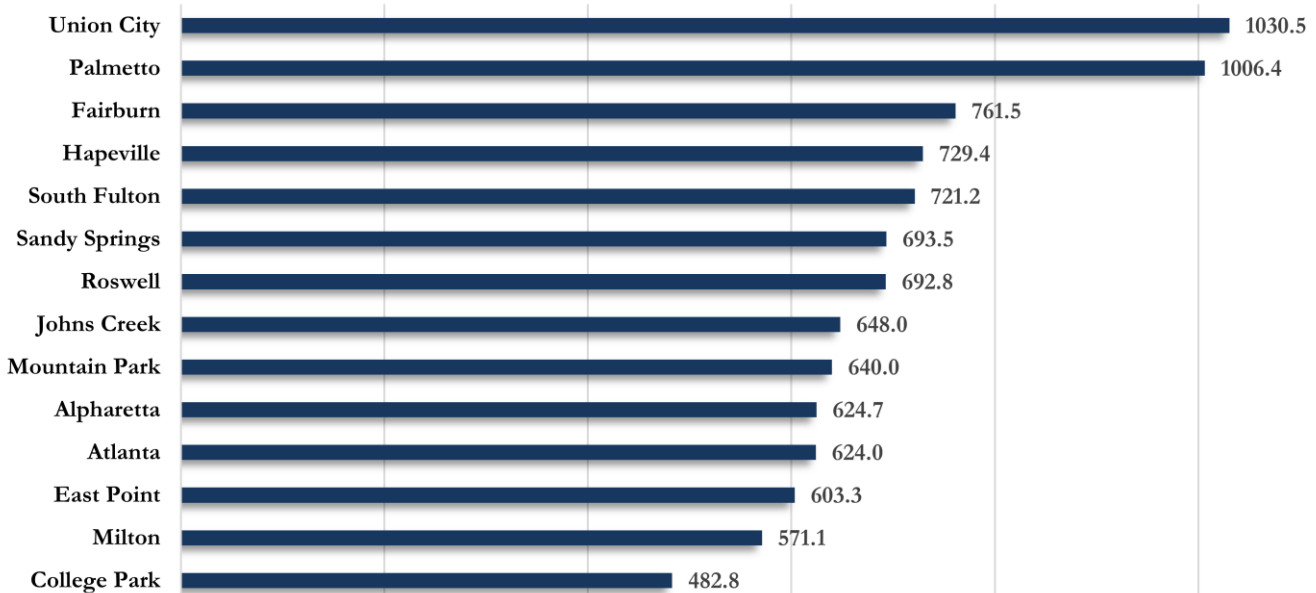
*Reported date of death used. Graph above reflects the trend in deaths attributed to COVID-19. The trend is likely to change as more data on deaths among persons with COVID-19 is reported in the state surveillance database.

COVID-19 CASE COUNTS AND RATES BY CITY

	Recent 14-day reporting period ¹	Preceding 14-day reporting period	% Change from preceding 14 days (%) ²	Incidence Rate ³
	1/13-1/26	12/30-1/12		
Alpharetta	404	565	↓ 28.5%	624.7
Atlanta	2753	3223	↓ 14.6%	624.0
Chattahoochee Hills	25	18	↑ 38.9%	872.0
College Park	67	63	↑ 6.3%	482.8
East Point	211	250	↓ 15.6%	603.3
Fairburn	112	126	↓ 11.1%	761.5
Hapeville	48	49	↓ 2.0%	729.4
Johns Creek	542	684	↓ 20.8%	648.0
Milton	218	376	↓ 42.0%	571.1
Mountain Park	<10	<10	-	640.0
Palmetto	44	55	↓ 20.0%	1006.4
Roswell	653	834	↓ 21.7%	692.8
Sandy Springs	731	908	↓ 19.5%	693.5
South Fulton	686	738	↓ 7.0%	721.2
Union City	216	198	↑ 9.1%	1030.5
Unknown	219	162	-	-

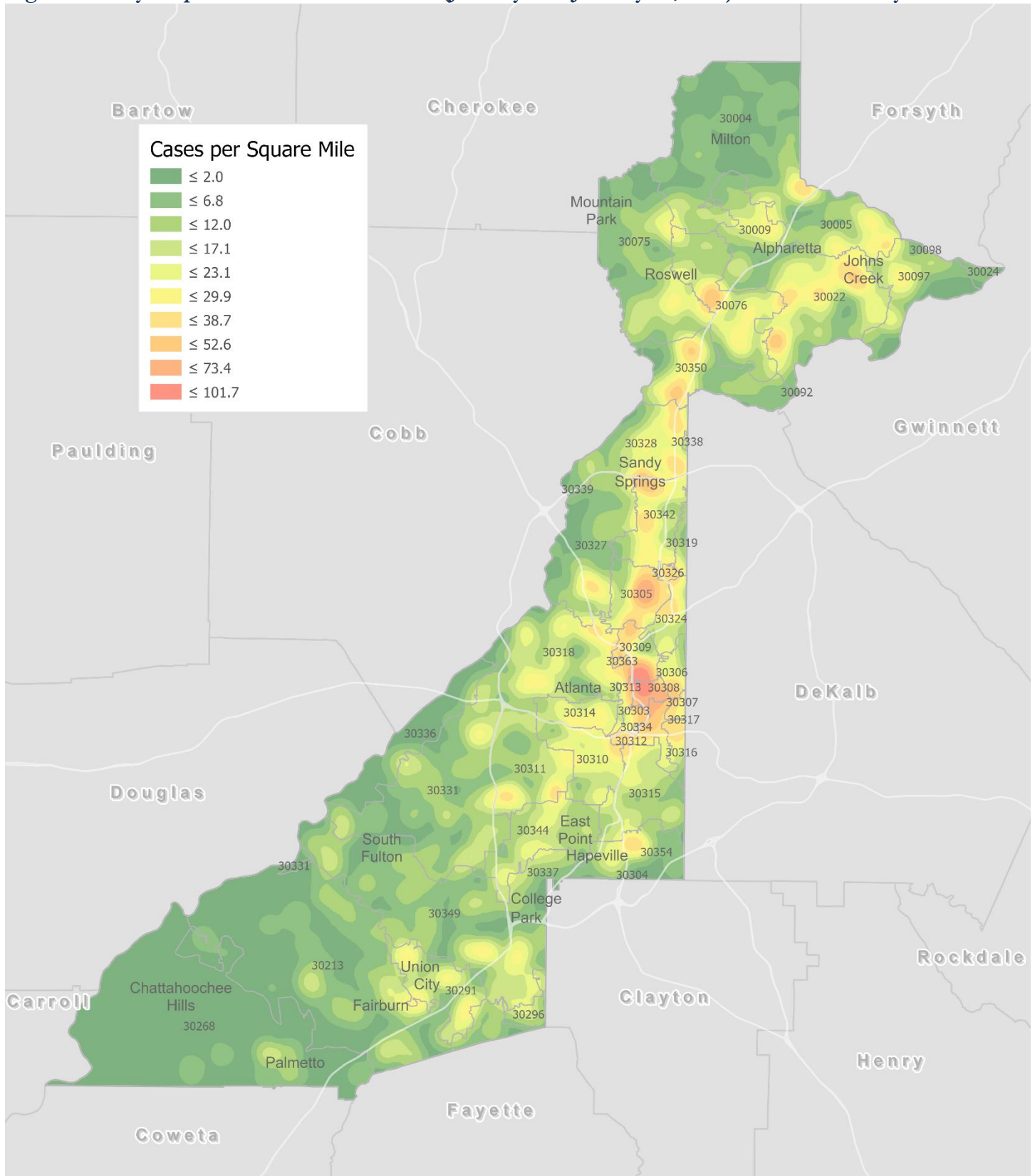
¹**New cases:** Cases diagnosed in most recent 14 days (based on reported dates of positive sample collection). To allow for lag in reporting results of new diagnoses from samples collected in the most recent week, data used for incident diagnoses analyses were moved back by one week. ²**% change:** These reflect the percentage increase or decrease in new diagnoses between the 14 days preceding the most recent 7 days and the 14 days preceding that. ³**(Incidence) Rate:** Rate of new diagnoses in the last 14 day period preceding the immediate past week. ****Data cleaning** (either during case interviews or address geo-coding) may lead to reassignment of few cases from one territory to another based on their corrected addresses. These may appear as "decreases" when compared to the previous counts. These do not reflect errors in the data collection or analysis process but only reflect the minor day-to-day fluctuations in case counts that arise in an evolving public health database like COVID's. **Note: All data reported are preliminary and subject to change.**

Fig. 8. Incidence Rates by Fulton City for Recent 14-day Reporting Period



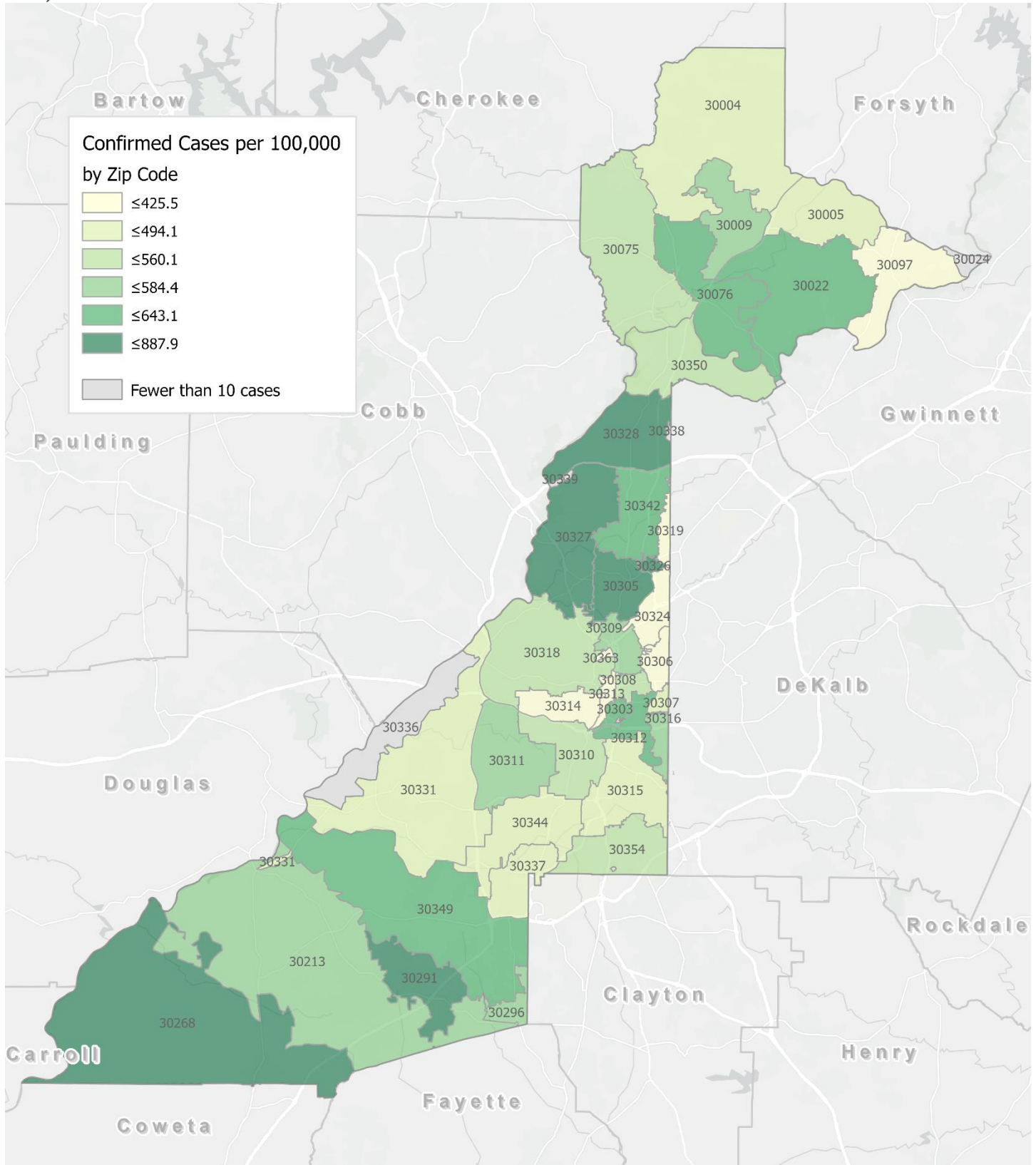
*Rates shown are per 100,000 persons | All data shown are preliminary and are subject to change as testing results get updated.

Fig. 9. Density Map – New COVID-19 Cases (January 13 – January 26, 2021) in Fulton County



New COVID-19 cases: Cases diagnosed in most recent 14 days (based on reported dates of positive sample collection). To allow for lag in reporting results of positive cases from samples collected in the immediate past 7 days, data used for incident diagnoses analyses are moved back by one week. Map reflects new COVID-19 cases diagnosed between Jan 13th and Jan 26th, 2021 across Fulton County, excluding LTCF cases.

Fig. 10. New COVID-19 Diagnoses Rates (per 100,000 population) by Zip Code (January 13 – January 26, 2021)



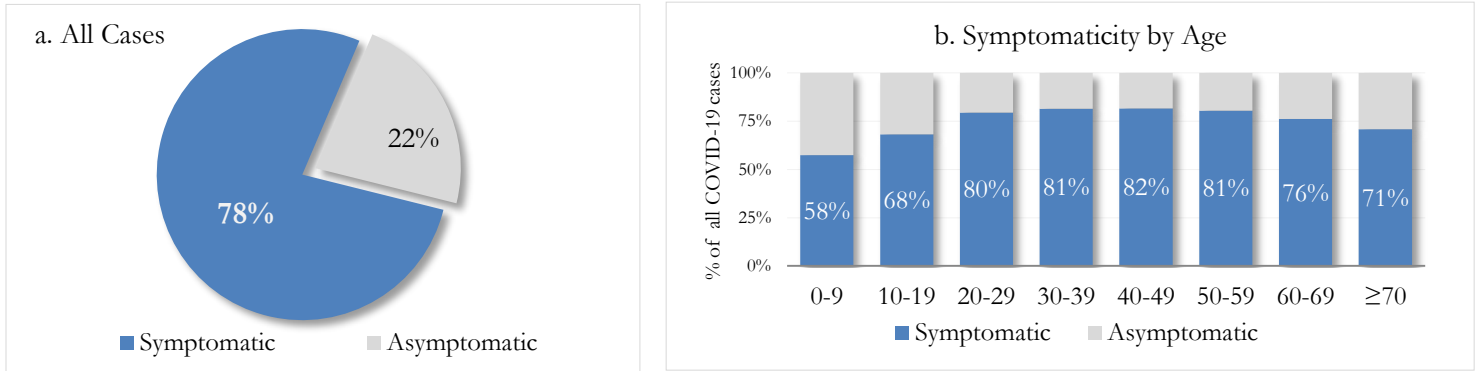
*Rates shown are per 100,000 populations.

New COVID-19 cases: Cases diagnosed in most recent 14 days (based on reported dates of positive sample collection). To allow for lag in reporting results of positive cases from samples collected in the immediate past 7 days, data used for incident diagnoses analyses are moved back by one week. Data used excludes outbreak-related cases at long-term care facilities and map shown reflects only the new non-LTCF cases diagnosed between the dates shown in map title. See page 12 for zip code break down table.

REPORTING SYMPTOMS AMONG PERSONS WITH COVID-19 IN FULTON

People with COVID-19 have reported a wide range of symptoms ranging from mild symptoms to severe illness. Symptoms may appear 2-14 days after exposure to the virus. Symptoms reported include: cough, shortness of breath/difficulty breathing, fever, chills, muscle pain, headache, sore throat, congestion, nausea or vomiting, diarrhea, or new loss of taste or smell – Centers for Disease Control and Prevention (CDC) – Centers for Disease Control and Prevention (CDC) <https://www.cdc.gov/coronavirus/2019-ncov/symptoms-testing/symptoms.html>

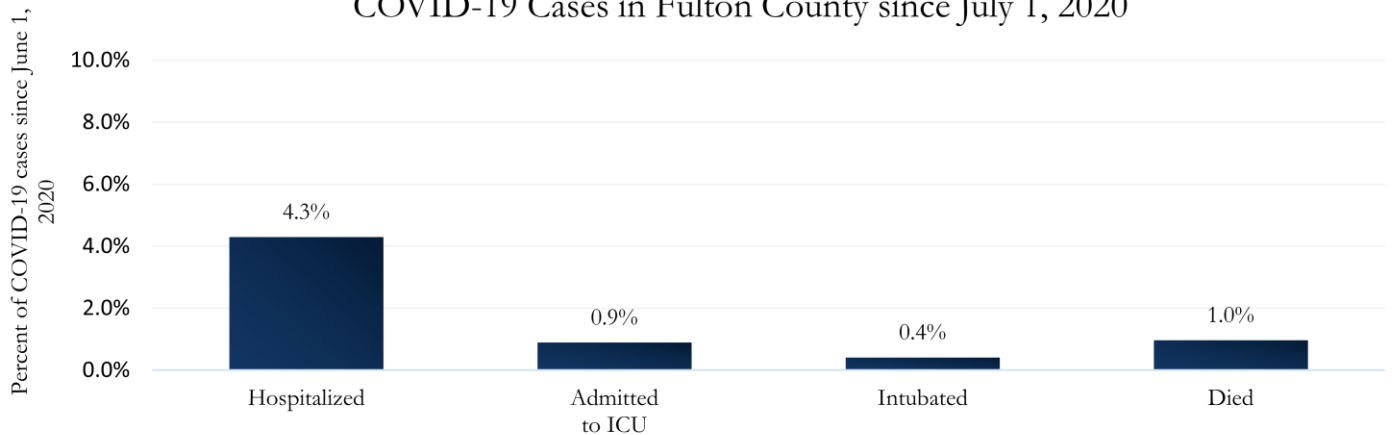
Fig. 11a & b. Total Proportion Reporting Symptoms in Fulton County



COVID-19 cases who have been case interviewed or had medical charts reviewed as of 2/1/21 only. n = 37,287

COVID-19 HOSPITALIZATIONS, ICU ADMISSIONS AND DEATHS IN FULTON

Fig. 8. Hospitalizations, ICU Admissions, Intubations, and Deaths among COVID-19 Cases in Fulton County since July 1, 2020



DEMOGRAPHIC DISTRIBUTIONS – COVID-19 CASES AND DEATHS

A. Distribution of COVID-19 cases by gender, age, and race in Fulton County by Fulton Region in the past 28 days (12/30 - 1/26)

	North Fulton Cities ¹ Count (%)	Atlanta Count (%)	South Fulton Cities ² Count (%)	Unknown City Count (%)	All Fulton Count (%)
Total COVID-19 cases	5605	5677	2760	366	14408
Gender: Female	2975 (53%)	2969 (52%)	1570 (57%)	195 (53%)	7709 (54%)
Male	2578 (46%)	2660 (47%)	1177 (43%)	166 (45%)	6581 (46%)
Unknown*	52 (1%)	48 (1%)	13 (0%)	<10	118 (1%)
Age: 0-9	283 (5%)	214 (4%)	117 (4%)	19 (5%)	633 (4%)
10-19	707 (13%)	419 (7%)	245 (9%)	40 (11%)	1411 (10%)
20-29	1012 (18%)	1368 (24%)	441 (16%)	75 (20%)	2896 (20%)
30-39	830 (15%)	1213 (21%)	528 (19%)	77 (21%)	2648 (18%)
40-49	894 (16%)	798 (14%)	502 (18%)	44 (12%)	2238 (16%)
50-59	897 (16%)	756 (13%)	452 (16%)	56 (15%)	2161 (15%)
60-69	490 (9%)	472 (8%)	271 (10%)	35 (10%)	1268 (9%)
≥70	490 (9%)	429 (8%)	197 (7%)	20 (5%)	1136 (8%)
Unknown*	<10	<10	<10	<10	17 (<1%)
Race: Asian, NH	429 (8%)	105 (2%)	20 (1%)	20 (5%)	574 (4%)
Black, NH	474 (8%)	2145 (38%)	1750 (63%)	82 (22%)	4451 (31%)
White, NH	2074 (37%)	1206 (21%)	163 (6%)	80 (22%)	3523 (24%)
Hispanic	736 (13%)	279 (5%)	173 (6%)	37 (10%)	1225 (9%)
Other, NH	660 (12%)	483 (9%)	115 (4%)	30 (8%)	1288 (9%)
Unknown*	1232 (22%)	1459 (26%)	539 (20%)	117 (32%)	3347 (23%)

*Unknown includes cases not yet interviewed. 28 days delayed by seven to account for lag in reporting lab results. ¹Includes all Fulton County cities north of Atlanta (Alpharetta, Johns Creek, Milton, Mountain Park, Roswell, Sandy Springs). ²Includes all cities south of Atlanta (Chattahoochee Hills, College Park, East Point, Fairburn, Hapeville, Palmetto, South Fulton, and Union City)

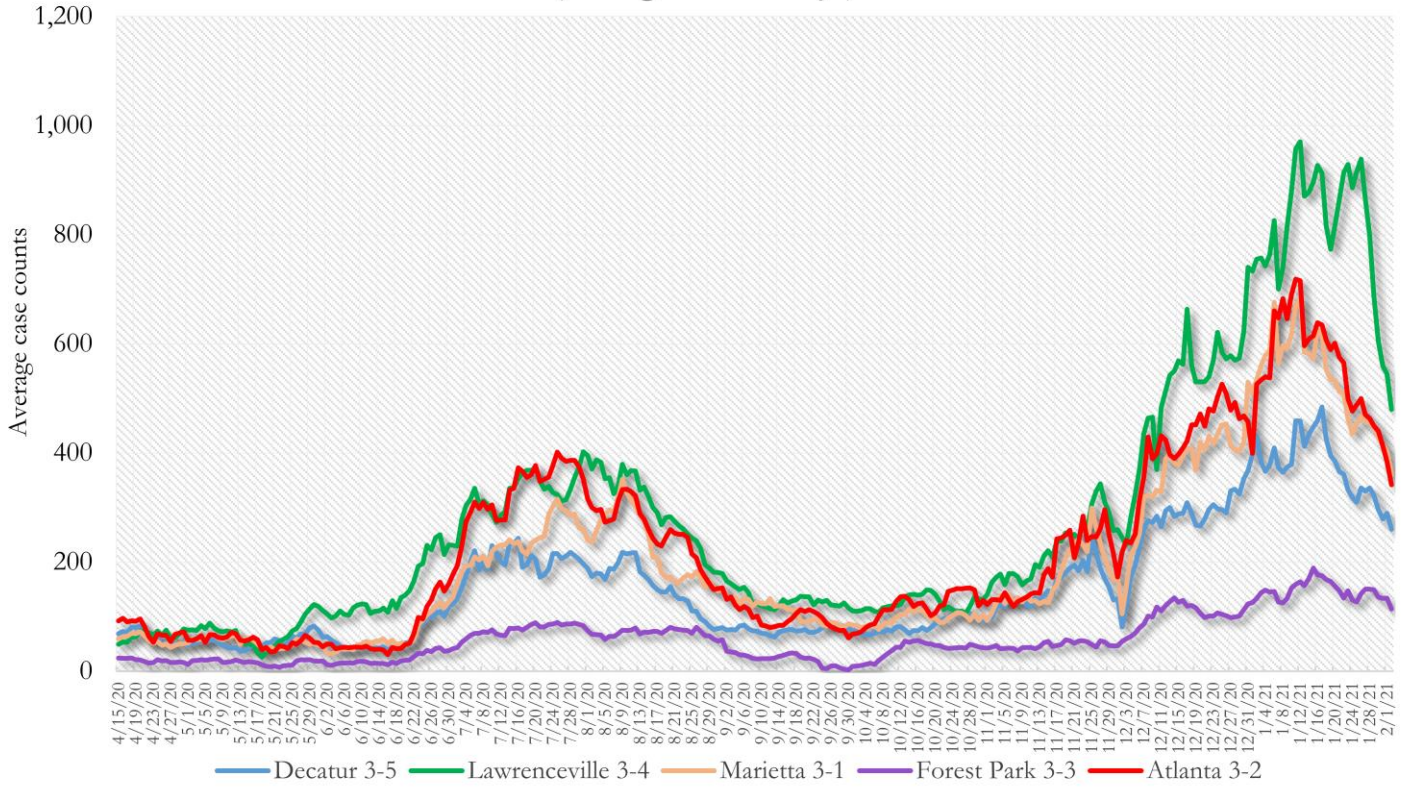
B. Distribution of COVID-19 deaths by gender, age, and race in Fulton County in the past 28 days (12/30 - 1/26)

	Count of New Deaths	% of New Deaths
Total COVID-19 deaths	35	
Gender: Female	18	51%
Male	17	49%
Unknown	<10	<1%
Age: ≤ 29	<10	<1%
30-39	<10	3%
40-49	<10	3%
50-59	<10	3%
60-69	<10	11%
≥70	28	80%
Unknown	<10	<1%
Race: Asian, NH	<10	<1%
Black, NH	14	40%
White, NH	18	51%
Hispanic	<10	3%
Other, NH	<10	3%
Unknown	<10	3%

Note: All data reported are preliminary and subject to change. This table includes data on confirmed COVID-19 deaths and is subject to change as GA DPH completes cause of death confirmation processes. Data are 28 days delayed by seven to account for lag in reporting of deaths.

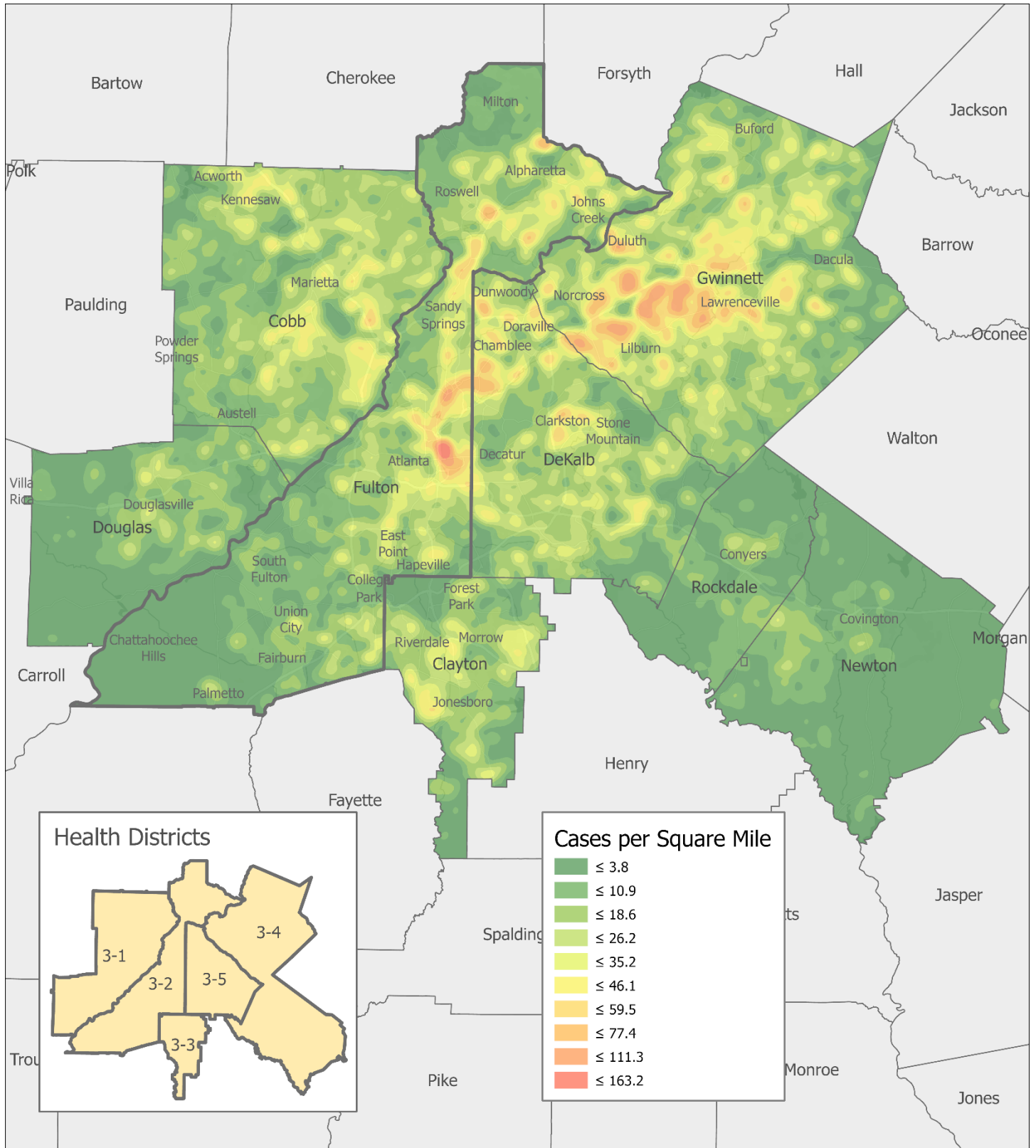
COVID-19 CASE TRENDS IN FULTON AND SURROUNDING DISTRICTS

**Fig. 13. Daily Case Counts for Atlanta Metro Districts
(Averaged over 7 days)**



*Graph shows the average number of cases calculated from the daily cumulative case counts in the metro Atlanta districts. Increases in daily cumulative case counts may include cases diagnosed earlier during the pandemic but were only recently reported to the state as cases diagnosed belonging to these districts.

Fig. 14. COVID-19 Cases in Fulton County and Surrounding Districts (January 13 – January 26, 2021)



COVID-19 NEW CASE¹ COUNTS BY ZIP CODE

Zip Code	Recent 14-day reporting period (1/13 – 1/26)	Previous 14-day reporting period (12/30 – 1/12)	% Change between reporting periods ²
All Fulton	6936	8257	↓ 16.0%
30004	306	476	↓ 35.7%
30005	188	271	↓ 30.6%
30009	123	185	↓ 33.5%
30022	500	582	↓ 14.1%
30023	<10	0	-
30024	13	<10	↑ 62.5%
30075	269	354	↓ 24.0%
30076	334	429	↓ 22.1%
30080	0	0	-
30097	138	200	↓ 31.0%
30098	<10	0	-
30135	0	<10	↓ 100.0%
30138	0	0	-
30139	0	0	-
30213	268	321	↓ 16.5%
30268	67	87	↓ 23.0%
30291	218	202	↑ 7.9%
30296	39	36	↑ 8.3%
30301	<10	<10	-
30303	46	35	↑ 31.4%
30305	231	294	↓ 21.4%
30306	82	97	↓ 15.5%
30307	34	36	↓ 5.6%
30308	114	137	↓ 16.8%
30309	179	261	↓ 31.4%
30310	182	195	↓ 6.7%
30311	242	201	↑ 20.4%
30312	183	183	-
30313	38	28	↑ 35.7%
30314	112	110	↑ 1.8%
30315	182	222	↓ 18.0%
30316	79	81	↓ 2.5%
30318	378	426	↓ 11.3%
30319	30	55	↓ 45.5%
30321	<10	<10	-
30324	115	148	↓ 22.3%
30326	39	62	↓ 37.1%
30327	194	252	↓ 23.0%
30328	260	329	↓ 21.0%
30331	345	415	↓ 16.9%
30334	<10	0	-
30336	12	10	↑ 20.0%
30337	66	61	↑ 8.2%

Zip Code	Recent 14-day reporting period (1/13 – 1/26)	Previous 14-day reporting period (12/30 – 1/12)	% Change between reporting periods
30338	<10	12	↓ 50.0%
30339	35	27	↑ 29.6%
30340	<10	0	-
30341	<10	0	-
30342	251	336	↓ 25.3%
30344	189	227	↓ 16.7%
30345	<10	<10	-
30349	410	366	↑ 12.0%
30350	226	295	↓ 23.4%
30354	115	115	-
30358	<10	<10	-
30363	18	21	↓ 14.3%
30374	<10	<10	-
30606	0	0	-
31131	0	0	-
31150	<10	0	-
Unknown	60	57	-

¹**New cases:** Cases diagnosed in most recent 28 days (based on reported dates of positive sample collection). To allow for lag in reporting results of new diagnoses from samples collected in the most recent week, data used for incident diagnoses analyses were moved back by one week. ²**Percent change:** These reflect the percentage increase or decrease of new diagnoses between the 14 days preceding the past 7 days and the 14 days preceding that. Changes in ZIP codes with less than 10 cases in both 2 week intervals are not reported

The following data are updated every two weeks.

Last updated 2/2/2021

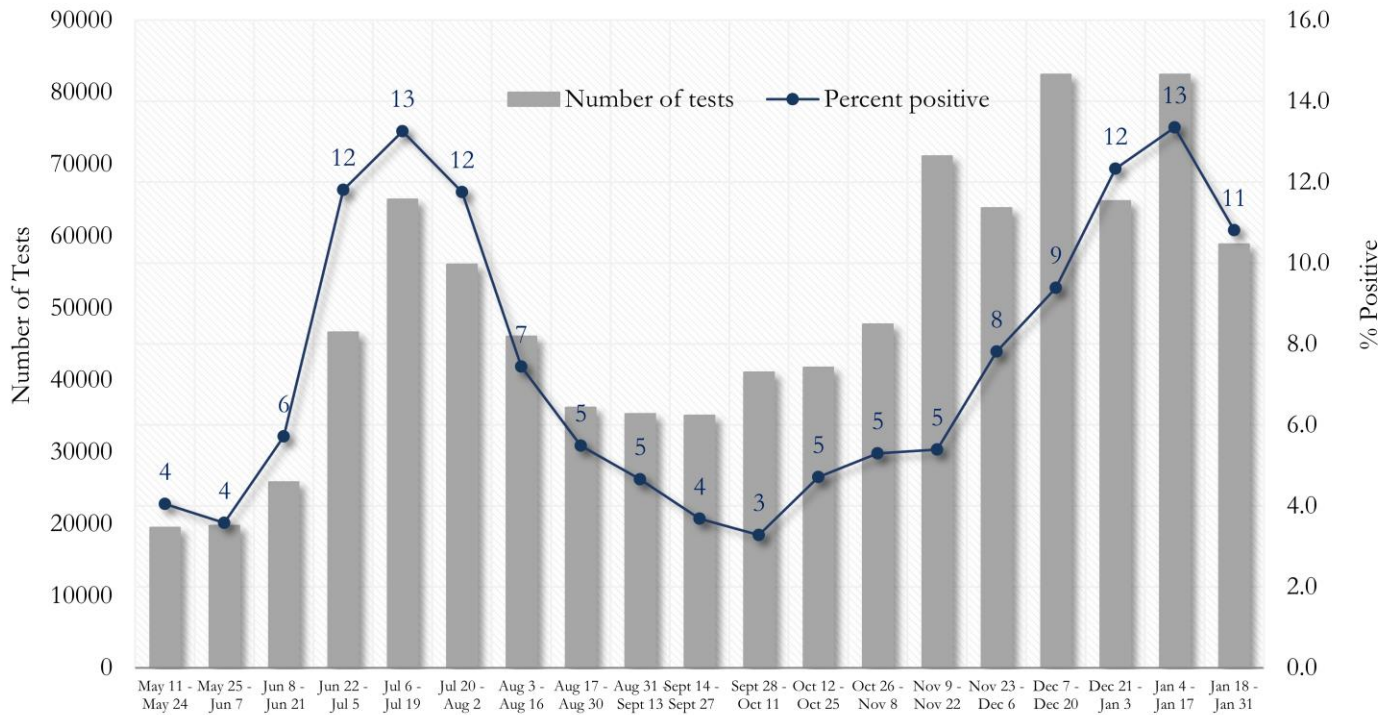
These data are generated using a fixed start date and counted forward in 14-day intervals. Using these time blocks allows for the stability in trends over time and accounts for delays in reporting lab results.

In the interest of keeping the reports concise and useful, the cumulative counts updated on a monthly basis can now be viewed between updates at the Fulton County Board of Health website [here](#).

Please visit the Georgia Department of Public Health Daily Status Report [here](#) for cumulative daily counts.

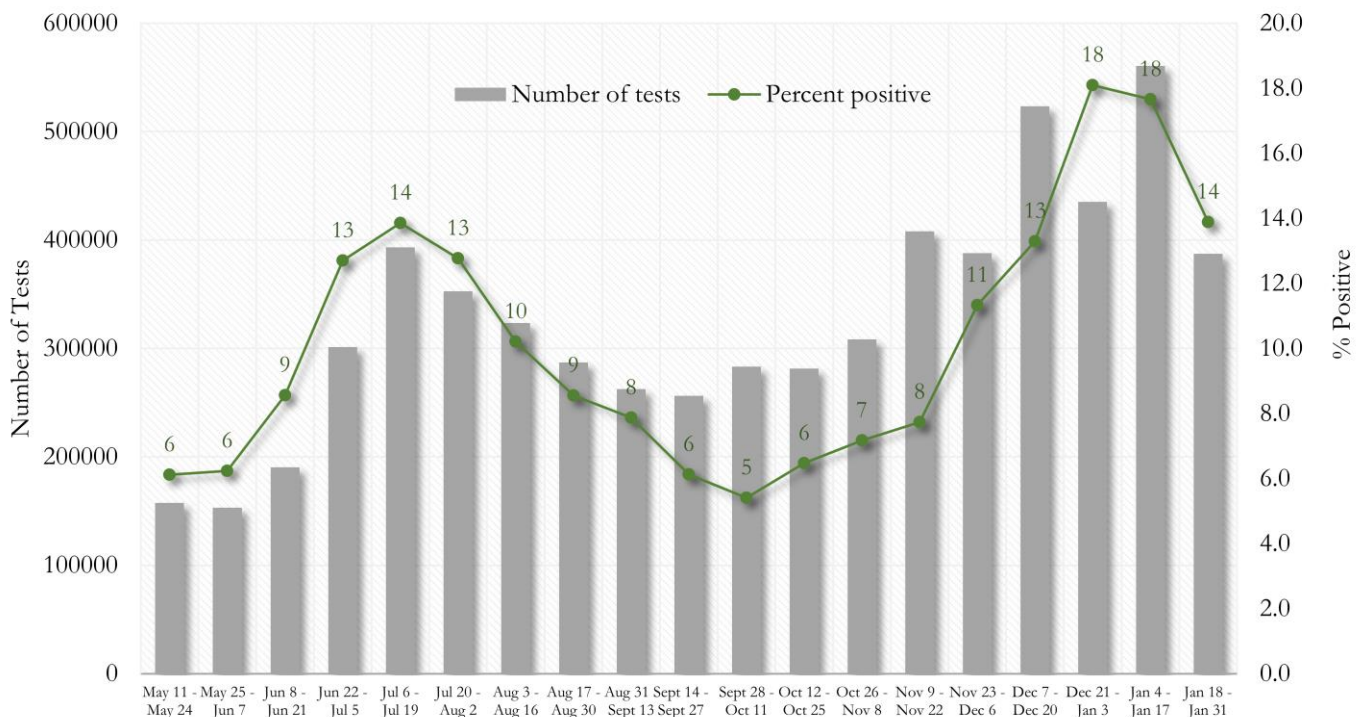
COVID-19 TESTING AND POSITIVITY IN FULTON COUNTY AND GEORGIA

Fig. 15. Trends in Positive COVID-19 Tests in Fulton County by 14-day Periods



*Data on Polymerase Chain Reaction (PCR) tests only included.

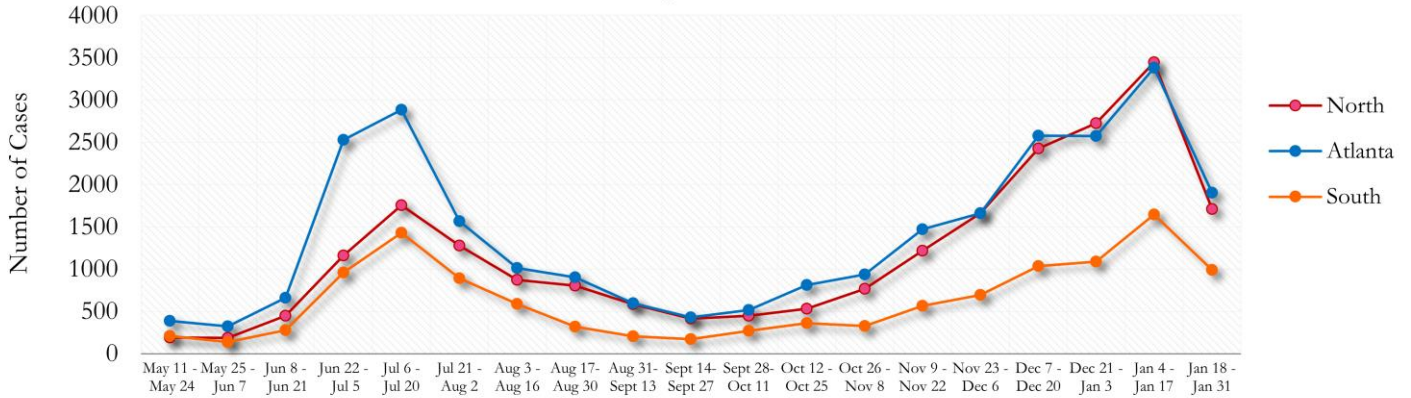
Fig. 16. Trends in Positive COVID-19 Tests in Georgia by 14-day Periods



*Data on Polymerase Chain Reaction (PCR) tests only included.

TRENDS IN COVID-19 CASES AMONG DEMOGRAPHIC GROUPS (14 DAY PERIODS)

Fig. 17. Trends in Geographic distribution of COVID-19 Cases in Fulton County by 14-day periods



In the past two weeks, the city of Atlanta and the Northern region have accounted for almost equal amounts of new cases.
 *North - Includes all Fulton cities north of Atlanta (Alpharetta, Johns Creek, Milton, Mountain Park, Roswell, Sandy Springs)
 *South - Includes all Fulton cities south of Atlanta (Chattahoochee Hills, College Park, East Point, Fairburn, Hapeville, Palmetto, South Fulton, and Union City)

Fig. 18. Trends in Racial Distribution of COVID-19 Cases in Fulton County by 14-day periods

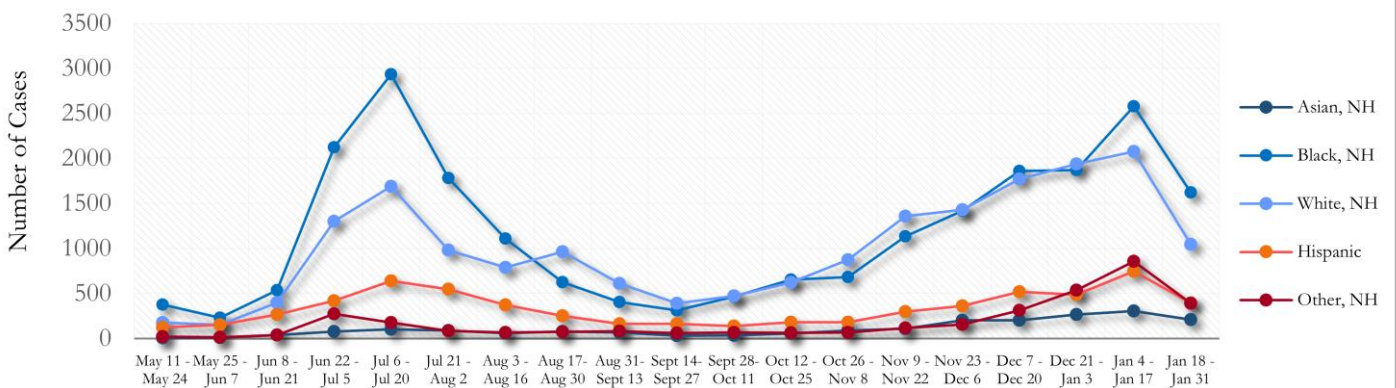
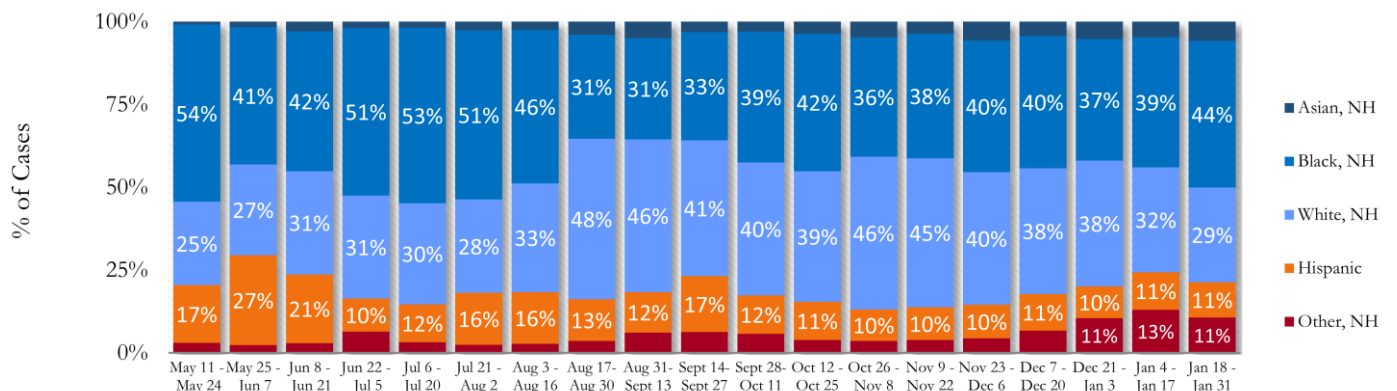


Fig. 19. Racial Distribution of COVID-19 Cases in Fulton County by 14-day periods



About 17% of all Fulton County COVID cases are missing data on patient race and ethnicity and in the past two weeks, about 24% of cases are missing this data.

Fig. 20. Trends in Gender Distribution of COVID-19 Cases in Fulton County by 14-day periods

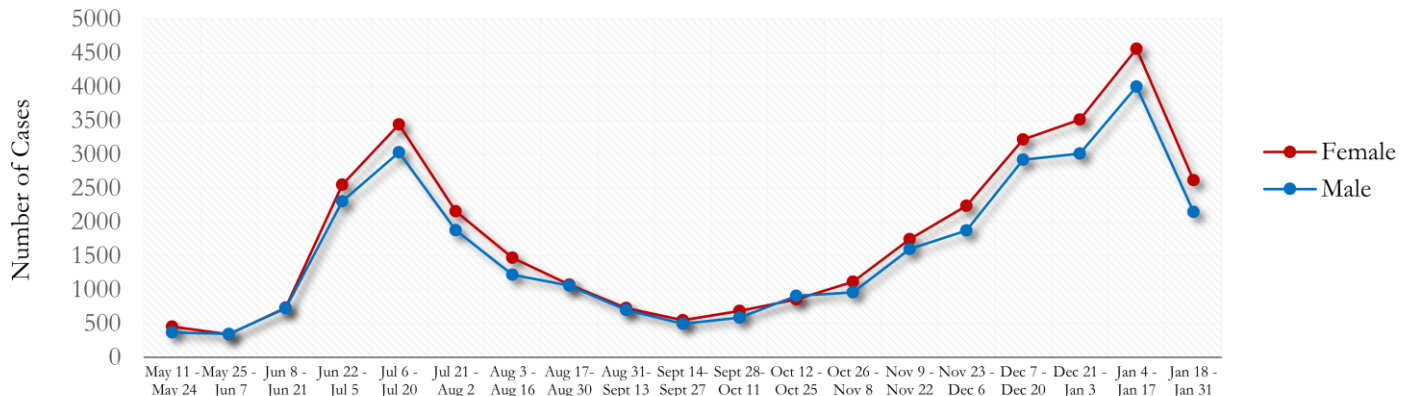
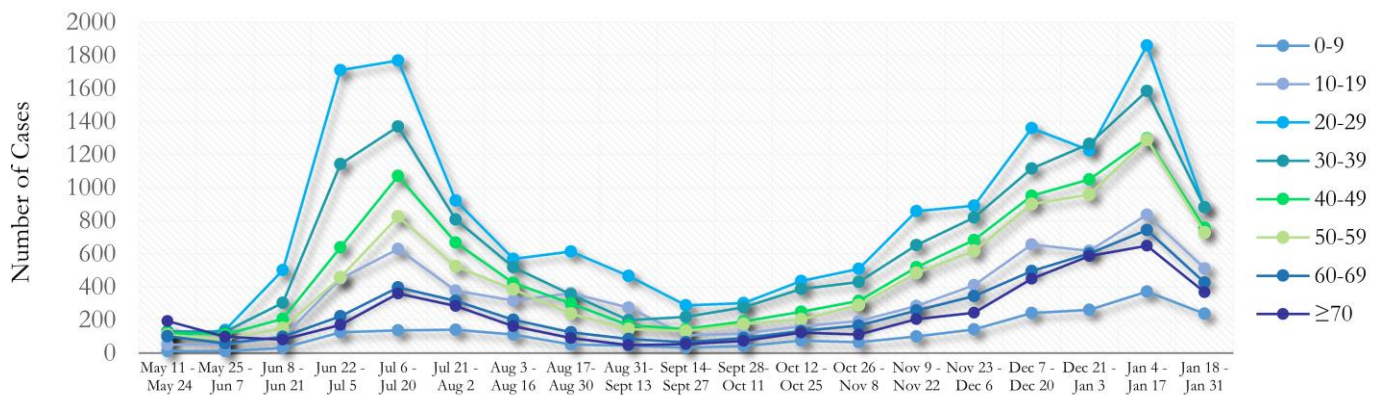
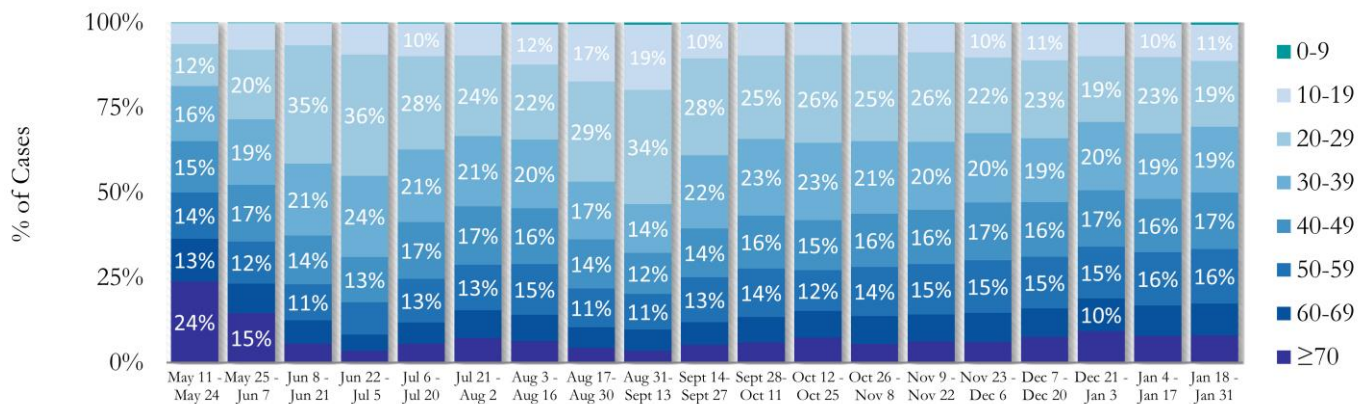


Fig. 21. Trends in Age Distribution of COVID-19 Cases in Fulton County by 14-day periods



In the most recent two weeks, 20-29 year olds and 30-39 year olds accounted for the majority of new cases.

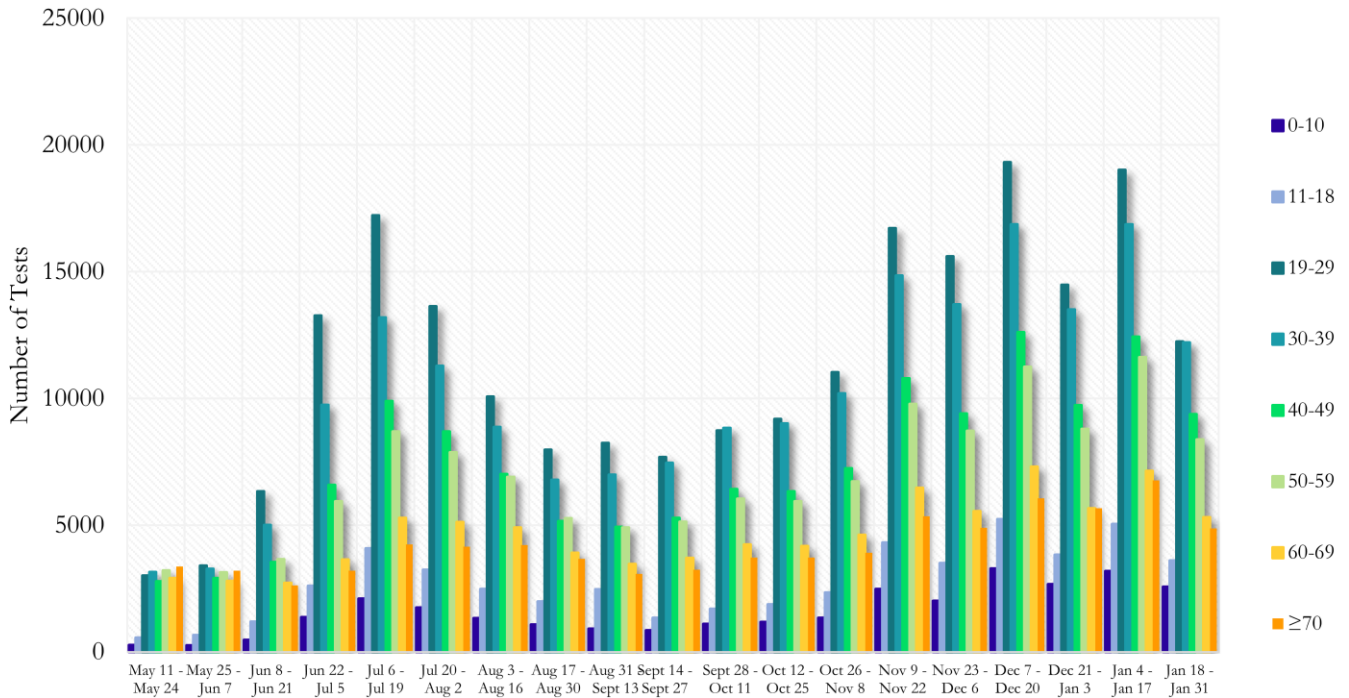
Fig. 22. Age Distribution of COVID-19 Cases in Fulton County by 14-day periods



Value labels under 10% are not shown.

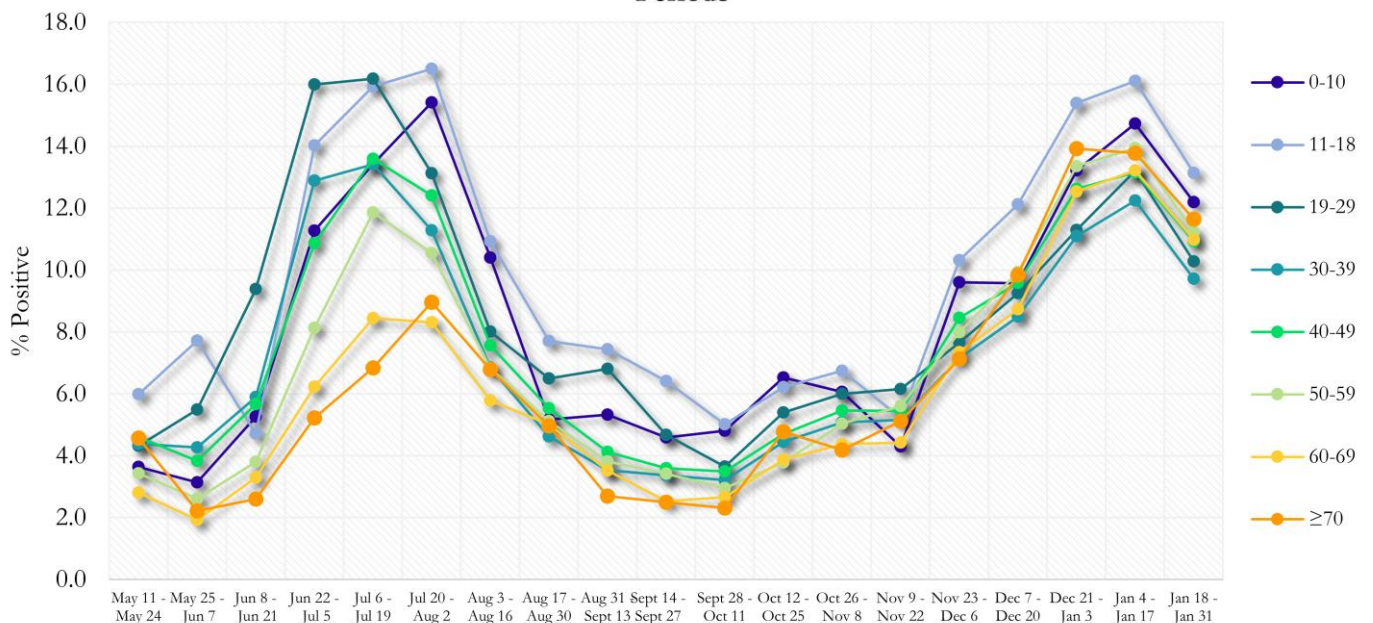
COVID-19 TESTING AND POSITIVITY IN FULTON COUNTY BY AGE AND RACE

Fig. 23. COVID-19 Tests by Age in Fulton County by 14-day Periods



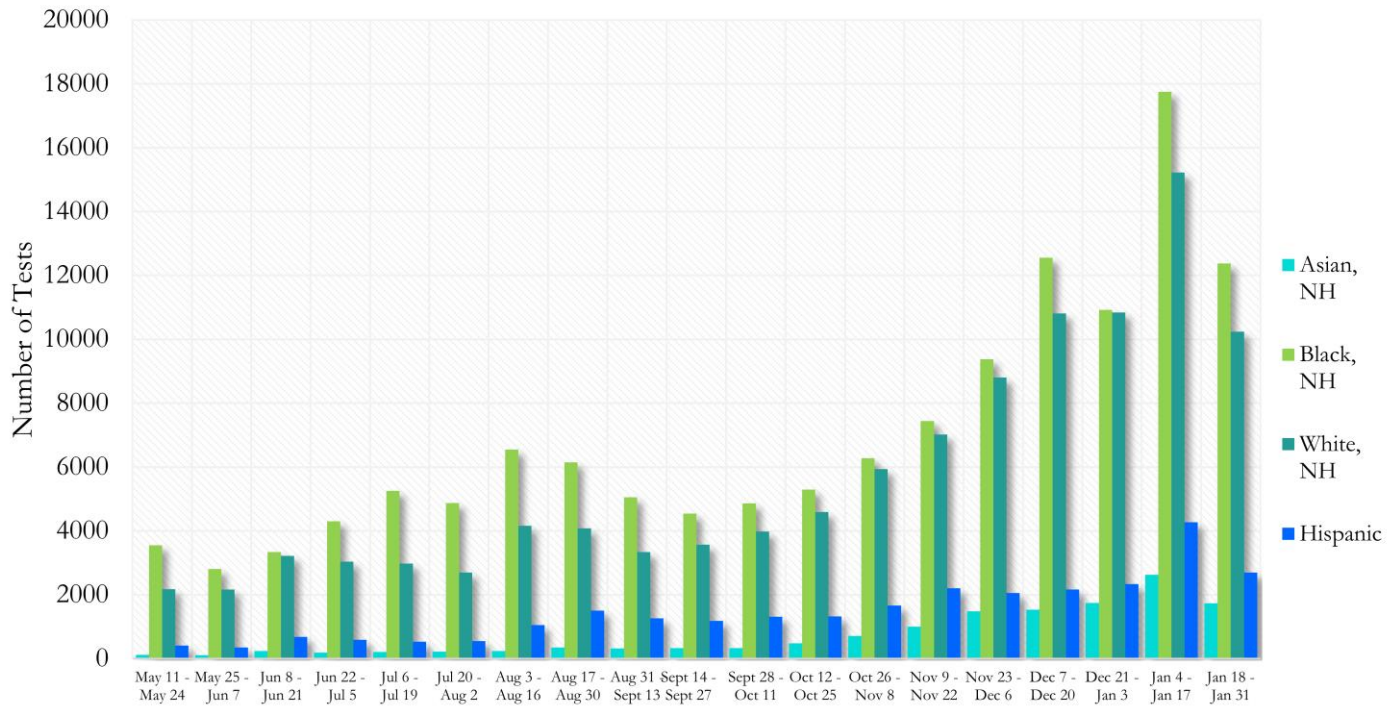
*Data on Polymerase Chain Reaction (PCR) tests only included.

Fig. 24. Percent Positive COVID-19 Tests by Age Group in Fulton County by 14-day Periods



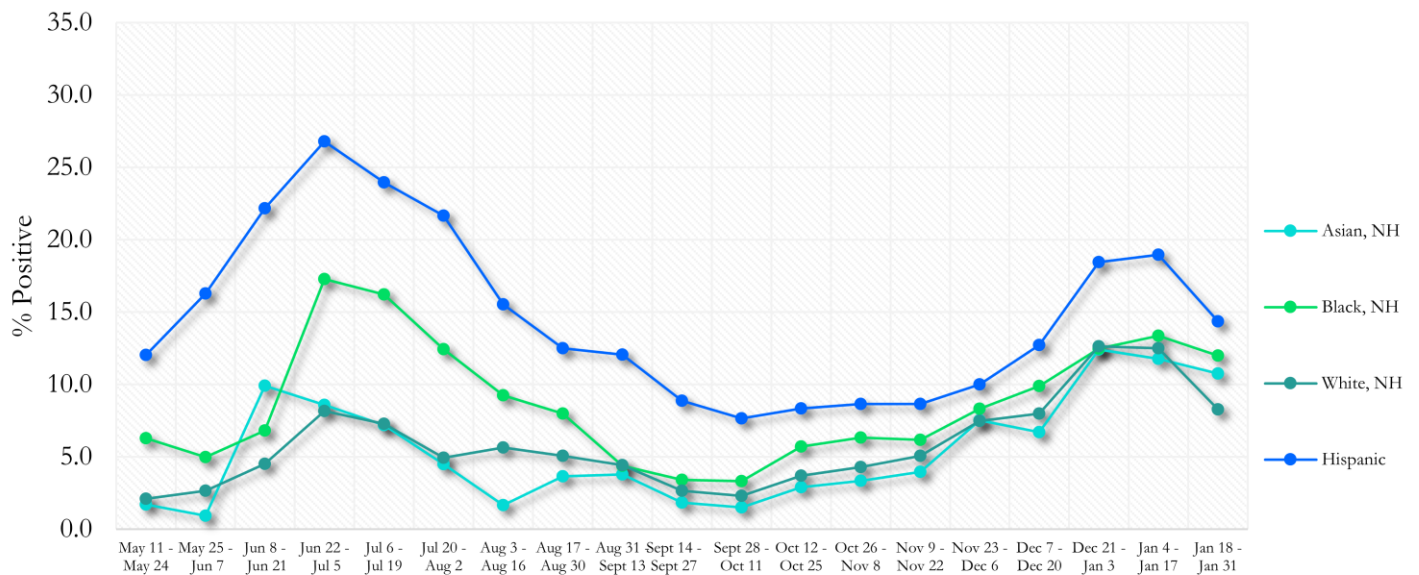
*Data on Polymerase Chain Reaction (PCR) tests only included.

Fig. 25. COVID-19 Tests by Race and Ethnicity in Fulton County by 14-day Periods



*Data on Polymerase Chain Reaction (PCR) tests only included. For the recent two weeks, 46% of test results did not have race/ethnicity information.

Fig. 26. Percent Positive COVID-19 Tests by Race and Ethnicity in Fulton County by 14-day Periods

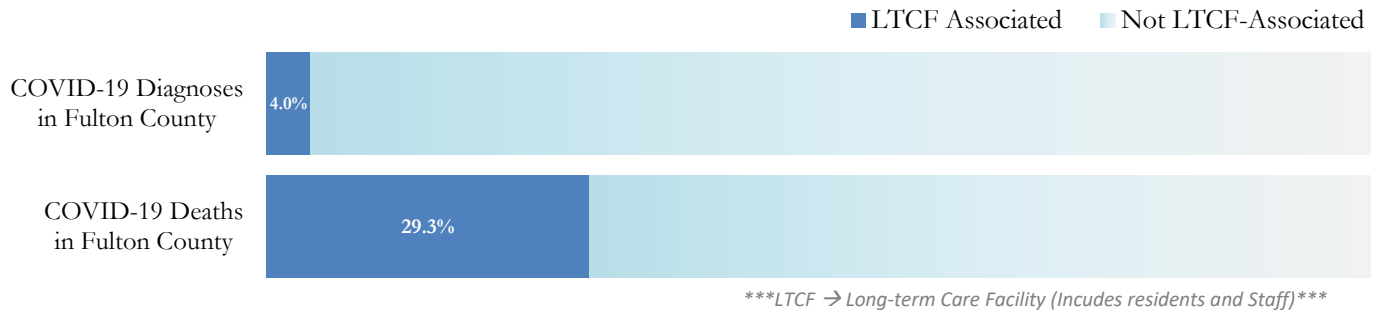


*Data on Polymerase Chain Reaction (PCR) tests only included.

COVID-19 IN LONG-TERM CARE FACILITIES IN FULTON COUNTY

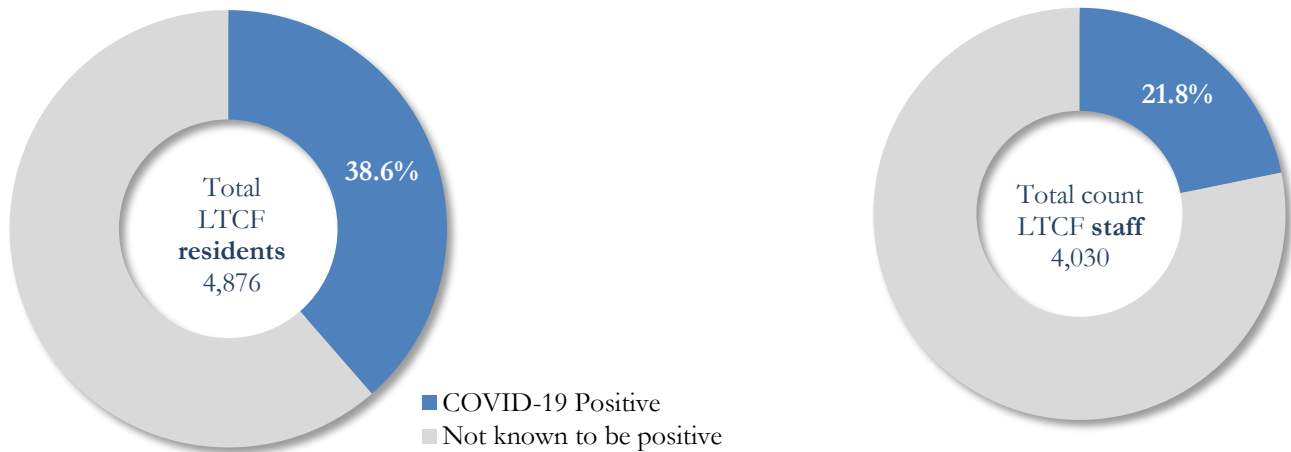
Older persons (aged 65 years and older) and persons who live in nursing homes or other long-term care facilities seem to be at higher risk for developing more serious complications from COVID-19. Extra precautions are recommended for individuals within this risk groups – Centers for Disease Control and Prevention (CDC 2020) <https://www.cdc.gov/coronavirus/2019-ncov/need-extra-precautions/people-at-higher-risk.html>

Fig. 27. COVID-19 Diagnoses and Deaths in Fulton County Associated with Long-Term Care Facilities



COVID-19 POSITIVITY:

Fig. 28. COVID-19 Positivity at 64 reporting Long-Term Care Facilities (LTCF) in Fulton County



COVID-19 Cases, Hospitalizations, and Deaths among 64 reporting Long-Term Care Facilities in Fulton County

	LTCF Residents (n=4,876)			LTCF Staff (n=4,030)		
	Cases	Hospitalizations	Deaths	Cases	Hospitalizations	Deaths
Average (count per fac.) ¹	29	5	4	14	1	<0.1
Median (count per fac.) ¹	12	3	1	9	0	0
Lowest counts	0	0	0	0	0	0
Highest counts	143	48	30	70	8	2
Total Count	1882 (38.6%)^a	337 (17.9%)^b	260 (13.8%)^b	878 (21.8%)^a	33 (3.8%)^b	5 (<1.0%)^b

^a Percentage shown reflects proportion of total residents/staff tested who were positive (i.e. COVID-19 Positivity). | ^b Percentages shown are proportions of persons residents/staff diagnosed with COVID-19 who were hospitalized or died after diagnoses.