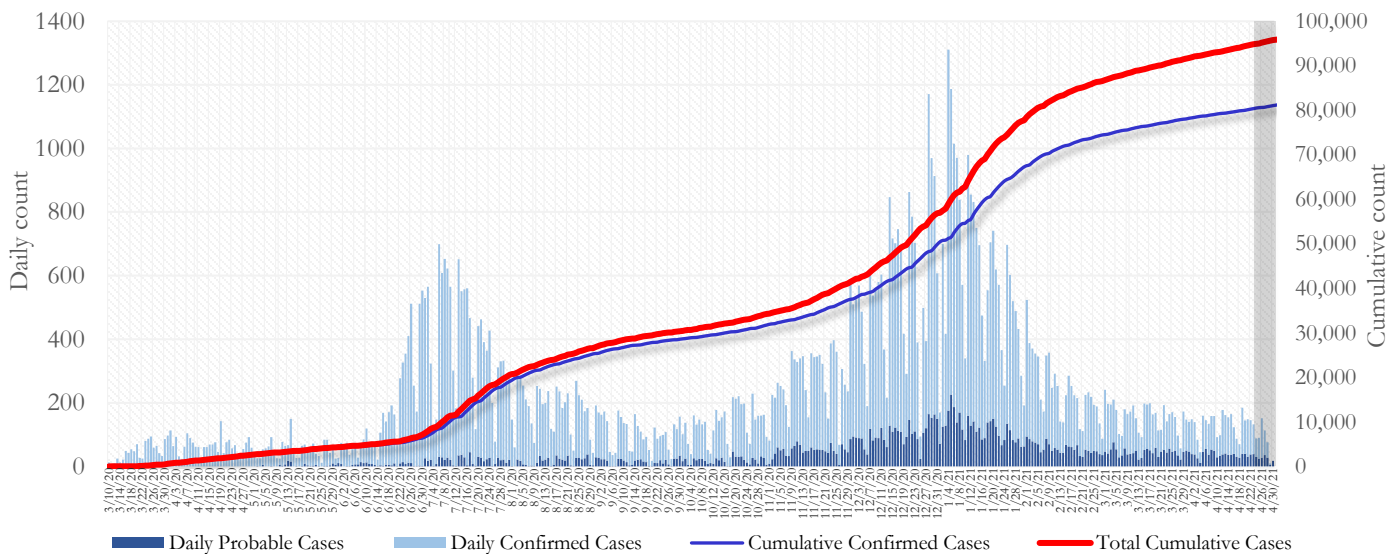


**SUMMARY**

- As of April 30, 2021, Fulton County has recorded **81,620 confirmed cases** and **14,674 probable cases** of COVID-19.
- Figure 1 shows both confirmed and probable case counts but the ensuing tables and figures use data from **confirmed cases only**.
- As of April 30, 2021, Fulton County has recorded **1,272 confirmed COVID-19 deaths**. 109 deaths are currently under review by GA DPH to confirm cause of death.
- By city, new confirmed COVID-19 case rates range from 77.4 per 100,000 persons (Roswell) to 225.0 per 100,000 persons (South Fulton). **[Fulton County Diagnoses Rates (per 100,000 persons): Cumulative – 7425.5; Incidence –135.2]**. See map showing incident case rate by ZIP code on Pg.12.
- Among all confirmed cases of COVID-19 in Fulton County since Sept. 1, **4.4% required hospitalization and 1.3% died**.
- Of all PCR testing done in Fulton County between April 12 and April 25, the percent positivity rate was **5.2%**.

**Fig 1. Daily and Cumulative Confirmed and Probable COVID-19 cases in Fulton County, GA**



Counts shown reflect the number of cases as of 9:00 am on 4/30/21 using the date of first positive sample collection. Where date of sample collection was not available or missing, the date of report creation in GA SendSS was used instead. The Georgia Department of Health defines a confirmed cases as someone with a positive molecular test, also known as PCR. A probable case is defined as a positive antigen test, though probable cases are still considered positive cases and individuals who tested positive through an antigen test should follow all DPH isolation and quarantine guidance. **Note:** Delays in data reporting may cause changes in data counts, particularly in the shaded portion. Data throughout this report are preliminary and subject to ongoing data cleaning processes, and thus are subject to change.

**THE FOLLOWING ANALYSES (PAGES 1-19) ARE USING DATA ON CONFIRMED CASES ONLY.**

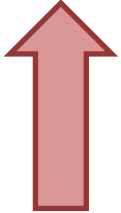
**DISTRIBUTION OF COVID-19 CASES BY REGION**

**New cases:** 47% of the new COVID-19 cases in the past 2 weeks occurred in Atlanta while 24% and 27% occurred in the Northern and Southern regions of the county respectively.

Fulton Region	% Cumulative count	% New cases*
Atlanta	42.6%	47.4%
North <sup>1</sup>	33.9%	23.8%
South <sup>2</sup>	19.9%	26.9%
Unincorporated/Unknown	3.5%	2.0%

<sup>1</sup>Includes all Fulton County cities north of Atlanta (Alpharetta, Johns Creek, Milton, Mountain Park, Roswell, Sandy Springs.) <sup>2</sup>Includes all cities south of Atlanta (Chattahoochee Hills, College Park, East Point, Fairburn, Hapeville, Palmetto, South Fulton, and Union City) \***New cases:** Cases diagnosed in the past 2 weeks only (between 4/10/21 – 4/23/21).

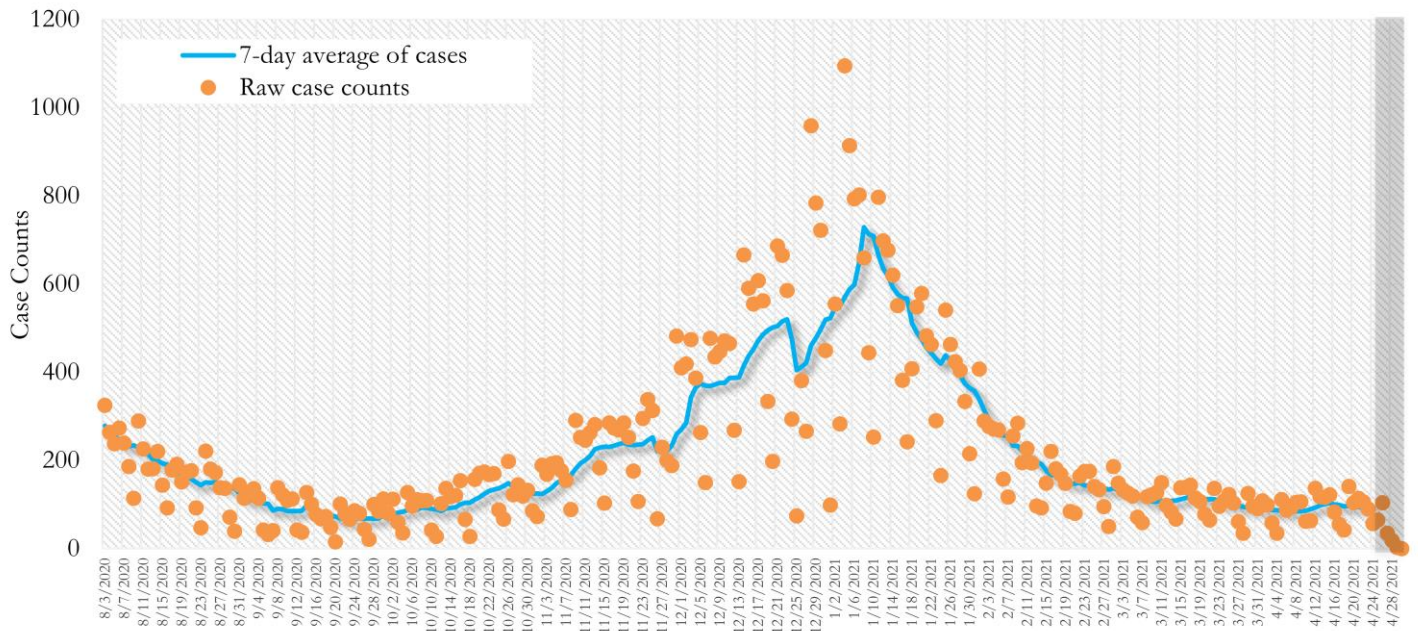
**In the recent two week reporting period (4/10-4/23), there were more new cases of COVID-19 in Fulton County than the previous two weeks (3/27-4/9).**



\*Delayed a week to account for testing results turnaround time.

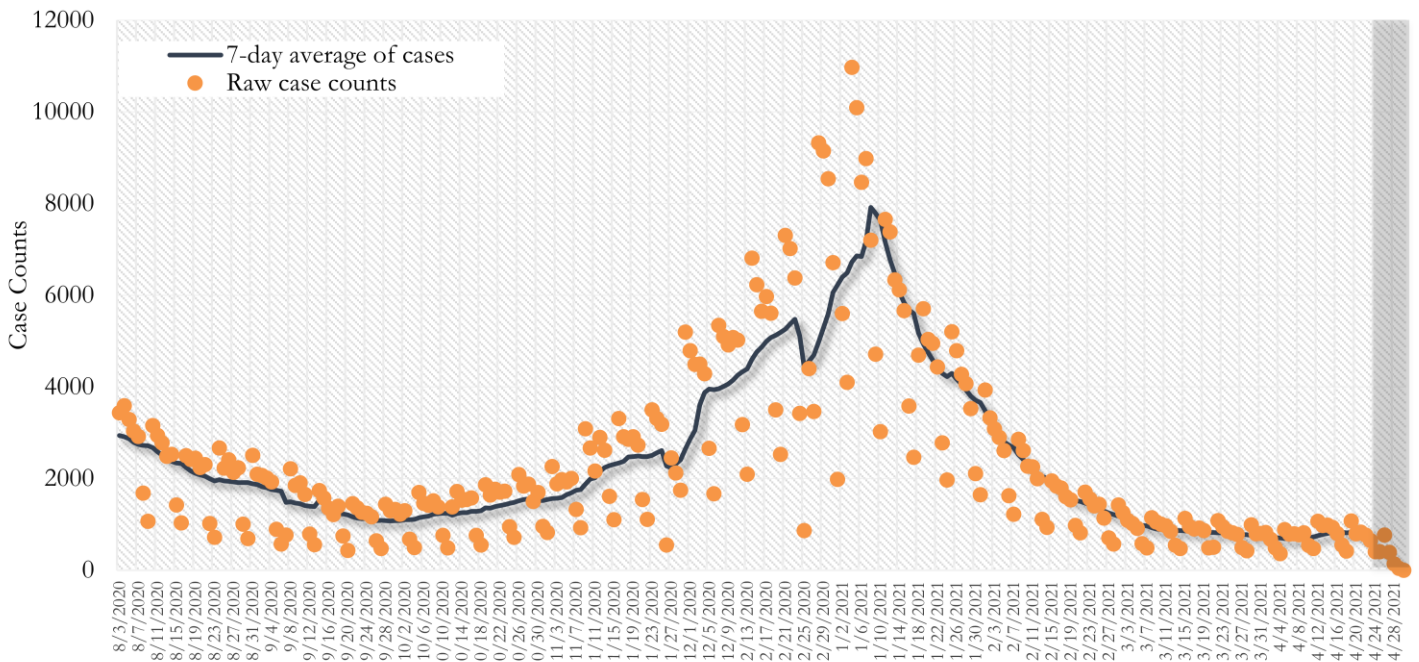
TRENDS IN COVID-19 CASES, HOSPITALIZATIONS AND DEATHS (7-DAY MOVING AVE.)

Fig. 2. New COVID-19 Cases in Fulton County Daily (Averaged over 7 days)



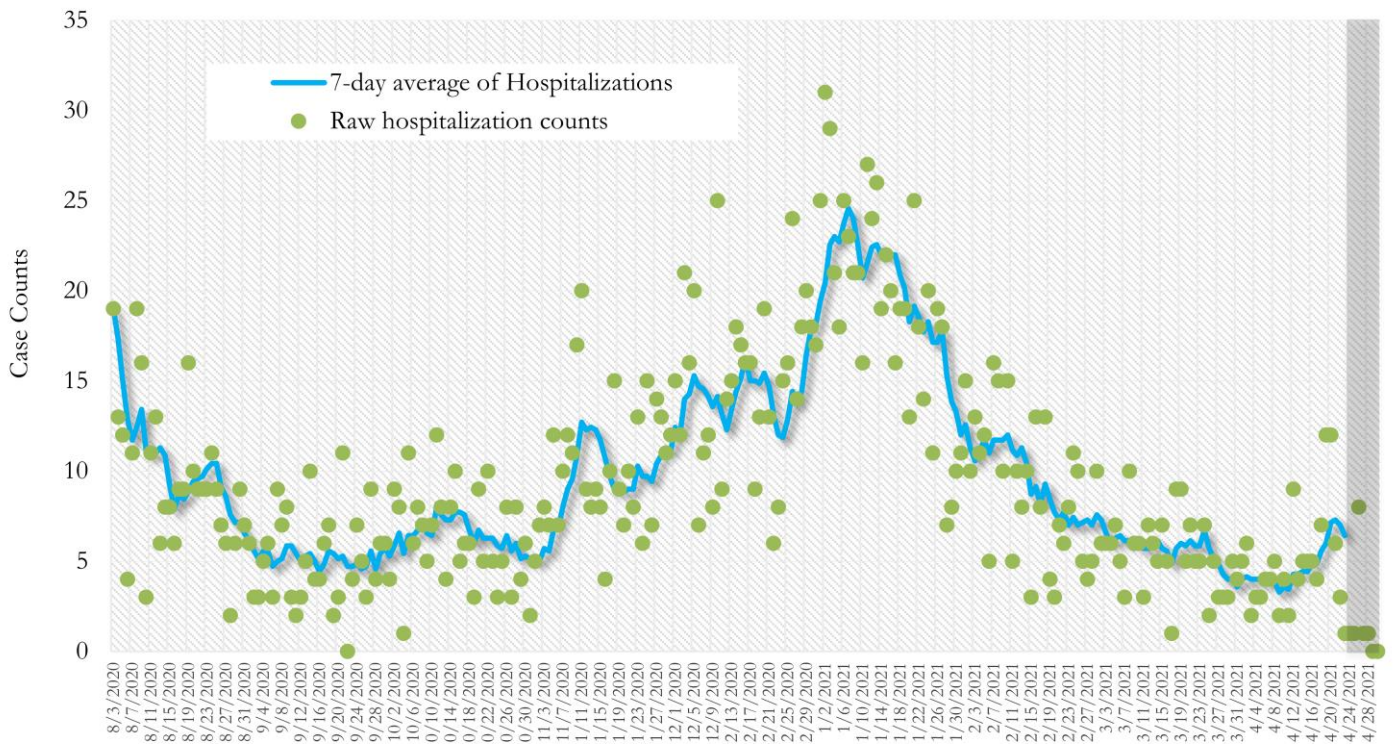
\*Date of collection of first positive sample used (report creation date used where sample collection date is missing). Graph above reflects the trend in COVID-19 diagnosis. Due to the high volume of testing in recent weeks, there have been delays in reporting lab results. Thus, the trend is subject to change as more lab results get added to the state surveillance database.

Fig. 3. New COVID-19 Cases in Georgia State Daily (Averaged over 7 days)



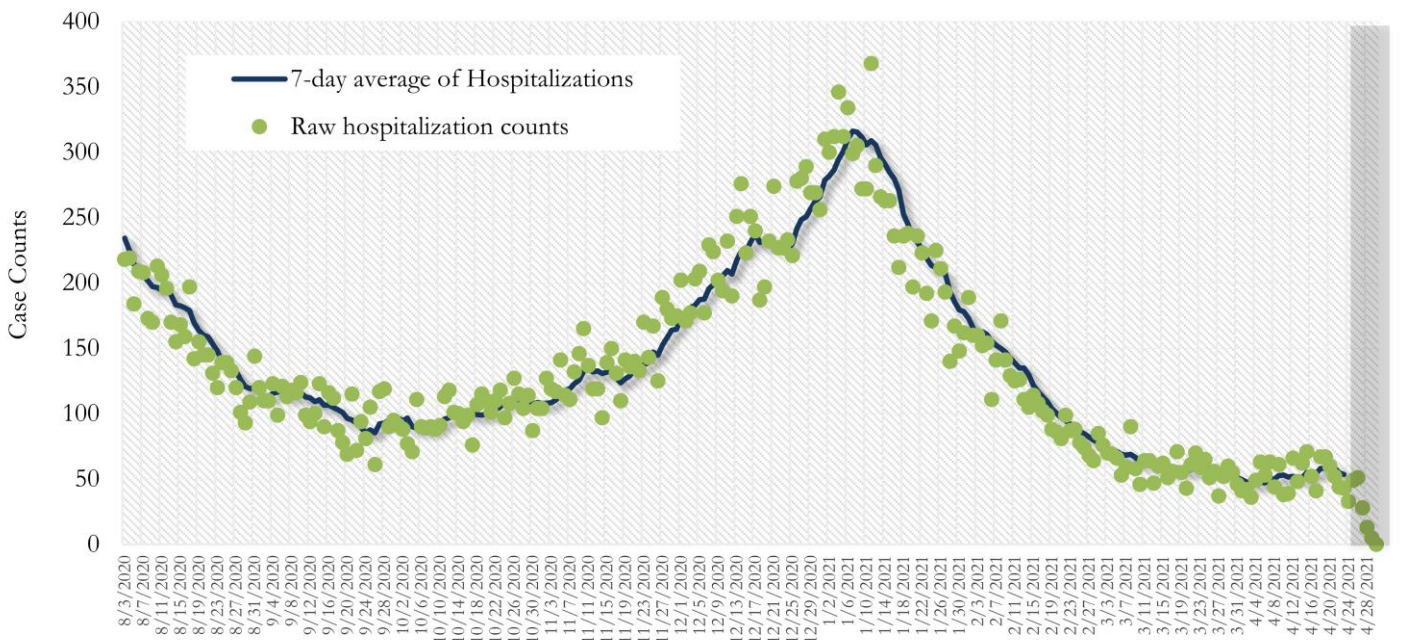
\*Date of collection of first positive sample used (report creation date used where sample collection date is missing). Graph above reflects the trend in COVID-19 diagnosis. Due to the high volume of testing in recent weeks, there have been delays in reporting lab results. Thus, the trend is subject to change as more lab results get added to the state surveillance database.

**Fig. 4. COVID-19 Hospitalizations in Fulton County Daily (Averaged over 7 days)**



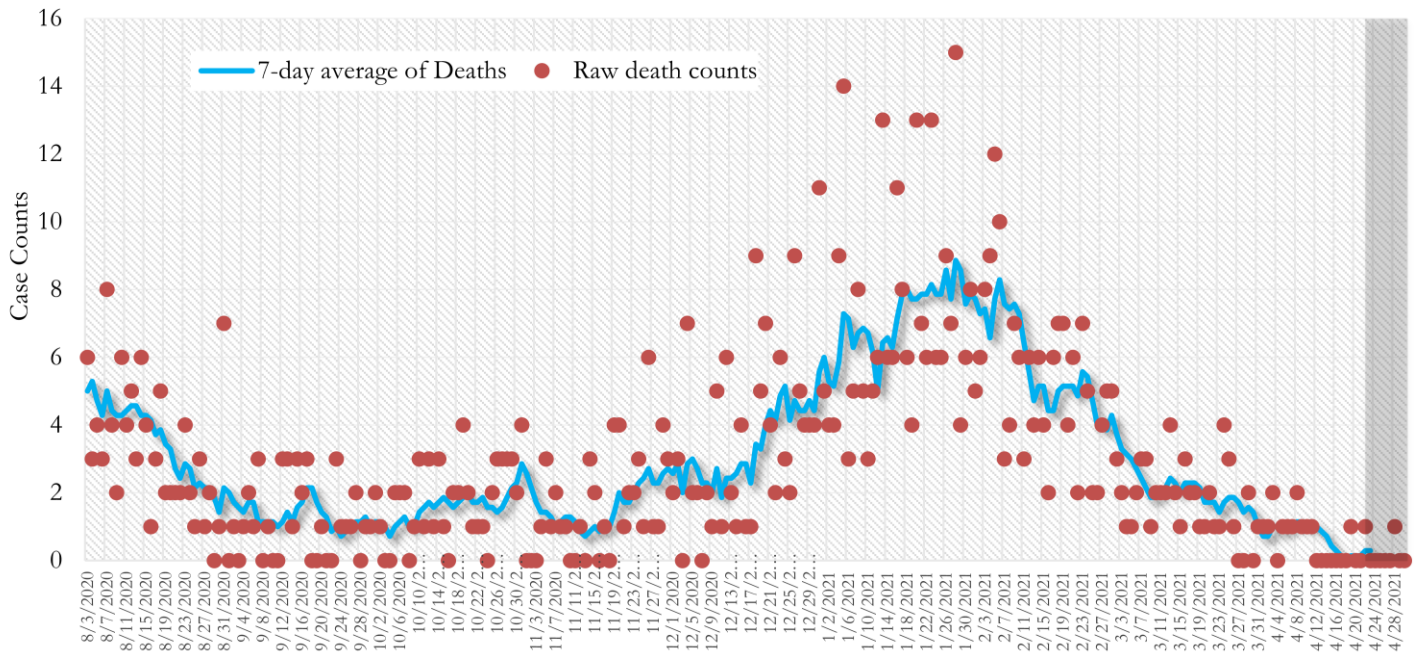
\*Reported date of hospital admission used. Graph above reflects the trend in COVID-19 hospitalizations. Due to the high volume of new cases being added daily, there have been delays in reporting hospitalization data. Thus, the trend is likely to change as more hospitalization data is reported in the state surveillance database.

**Fig. 5. COVID-19 Hospitalizations in Georgia State Daily (Averaged over 7 days)**



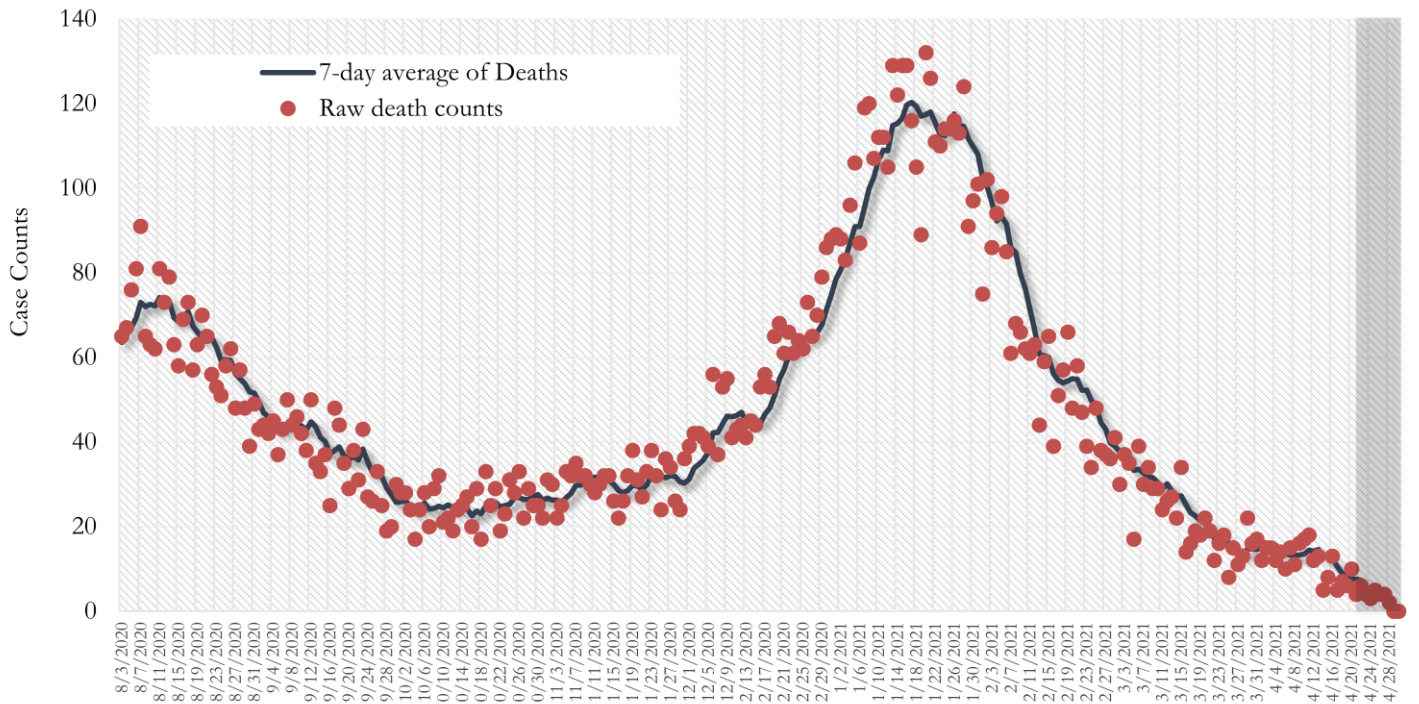
\*Reported date of hospital admission used. Graph above reflects the trend in COVID-19 hospitalizations. Due to the high volume of new cases being added daily, there have been delays in reporting hospitalization data. Thus, the trend is likely to change as more hospitalization data is reported in the state surveillance database.

**Fig. 6. COVID-19 Deaths in Fulton County Daily (Averaged over 7 days)**



\*Reported date of death used. Graph above reflects the trend in deaths attributed to COVID-19. The trend is likely to change as more data on deaths among persons with COVID-19 is reported in the state surveillance database.

**Fig. 7. COVID-19 Deaths in Georgia State Daily (Averaged over 7 days)**



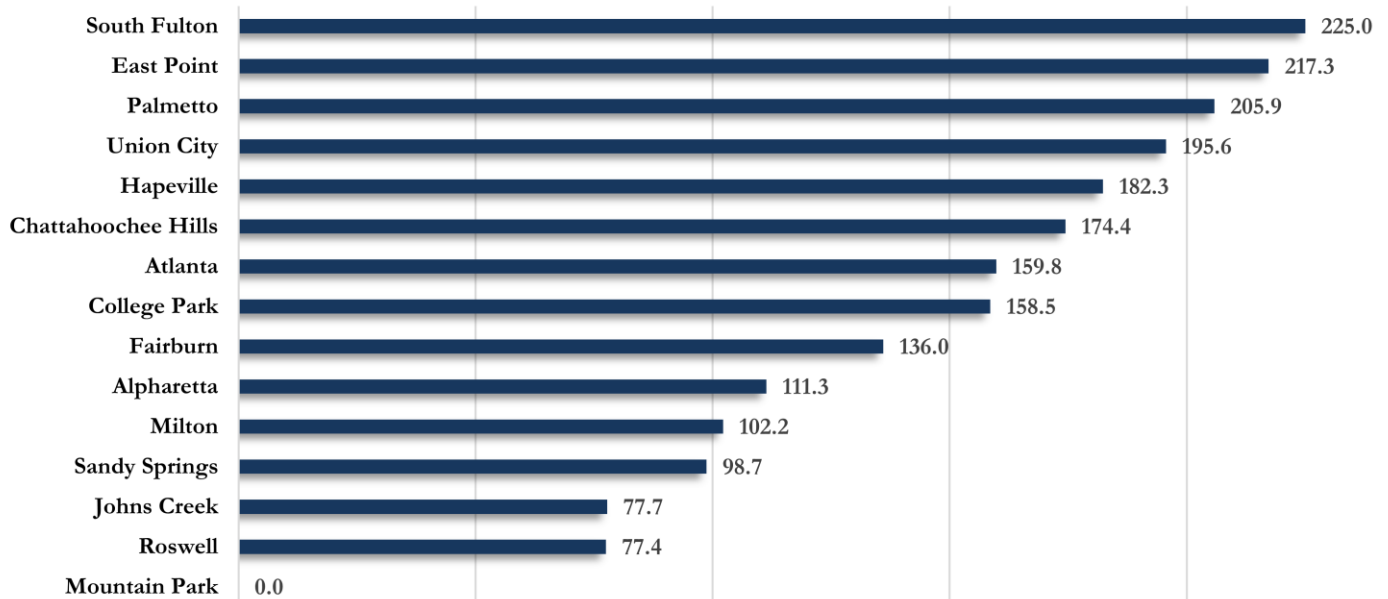
\*Reported date of death used. Graph above reflects the trend in deaths attributed to COVID-19. The trend is likely to change as more data on deaths among persons with COVID-19 is reported in the state surveillance database.

## COVID-19 CASE COUNTS AND RATES BY CITY

	Recent 14-day reporting period <sup>1</sup>	Preceding 14-day reporting period	% Change from preceding 14 days (%) <sup>2</sup>	Incidence Rate <sup>3</sup>
	4/10-4/23	3/27-4/9		
Alpharetta	72	64	↑ 12.5%	111.3
Atlanta	705	551	↑ 27.9%	159.8
Chattahoochee Hills	<10	0	-	174.4
College Park	22	18	↑ 22.2%	158.5
East Point	76	68	↑ 11.8%	217.3
Fairburn	20	21	↓ 4.8%	136.0
Hapeville	12	<10	↑ 140.0%	182.3
Johns Creek	65	61	↑ 6.6%	77.7
Milton	39	26	↑ 50.0%	102.2
Mountain Park	0	<10	-	0.0
Palmetto	<10	<10	↑ 125.0%	205.9
Roswell	73	109	↓ 33.0%	77.4
Sandy Springs	104	104	-	98.7
South Fulton	214	138	↑ 55.1%	225.0
Union City	41	38	↑ 7.9%	195.6
Unknown	27	17	-	-

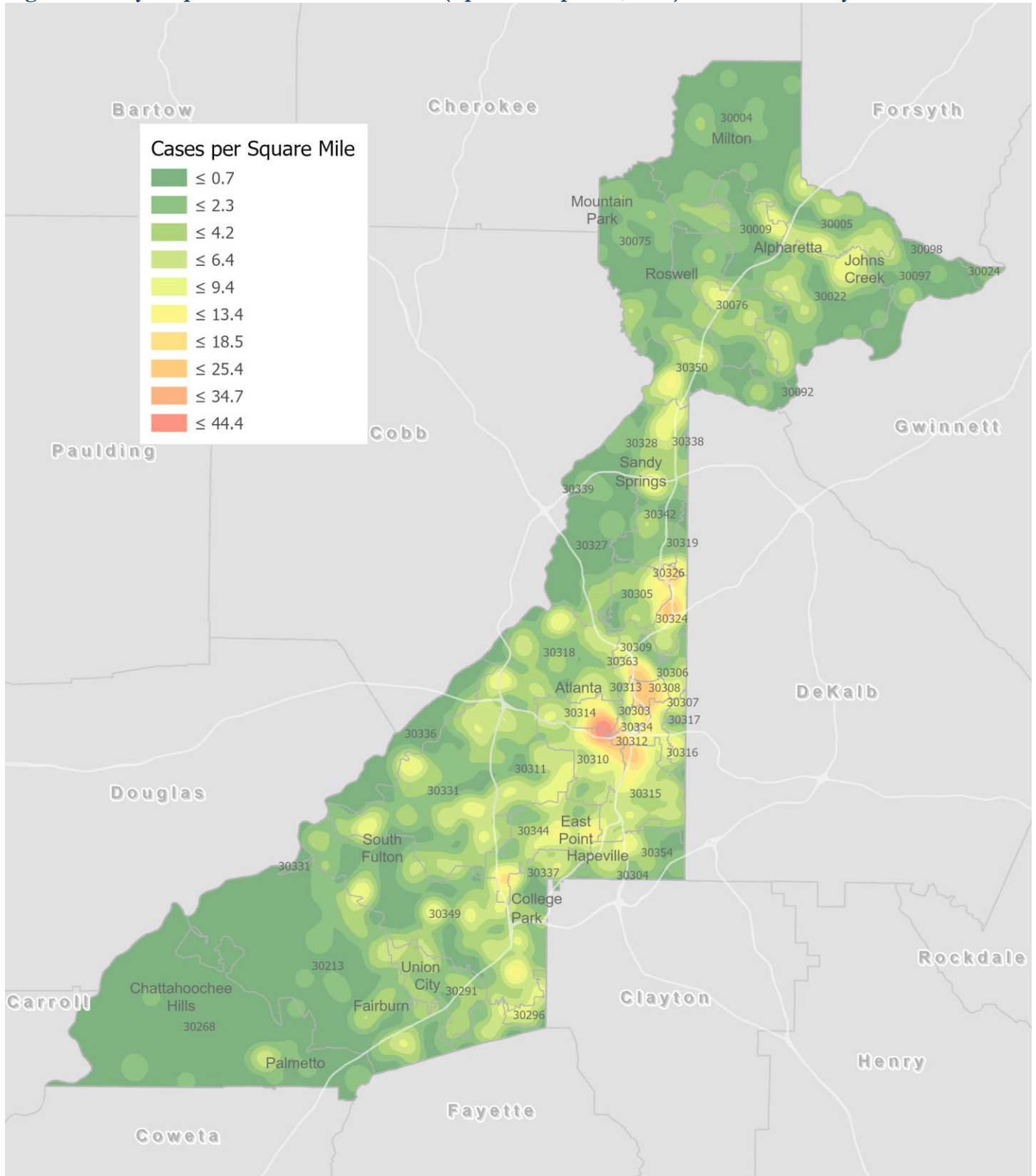
<sup>1</sup>New cases: Cases diagnosed in most recent 14 days (based on reported dates of positive sample collection). To allow for lag in reporting results of new diagnoses from samples collected in the most recent week, data used for incident diagnoses analyses were moved back by one week. <sup>2</sup>% change: These reflect the percentage increase or decrease in new diagnoses between the 14 days preceding the most recent 7 days and the 14 days preceding that. <sup>3</sup>(Incidence) Rate: Rate of new diagnoses in the last 14 day period preceding the immediate past week. **\*\*Data cleaning** (either during case interviews or address geo-coding) may lead to reassignment of few cases from one territory to another based on their corrected addresses. These may appear as "decreases" when compared to the previous counts. These do not reflect errors in the data collection or analysis process but only reflect the minor day-to-day fluctuations in case counts that arise in an evolving public health database like COVID's. <sup>4</sup>Incidence rate is skewed high due to small population. **Note: All data reported are preliminary and subject to change.**

Fig. 8. Incidence Rates by Fulton City for Recent 14-day Reporting Period



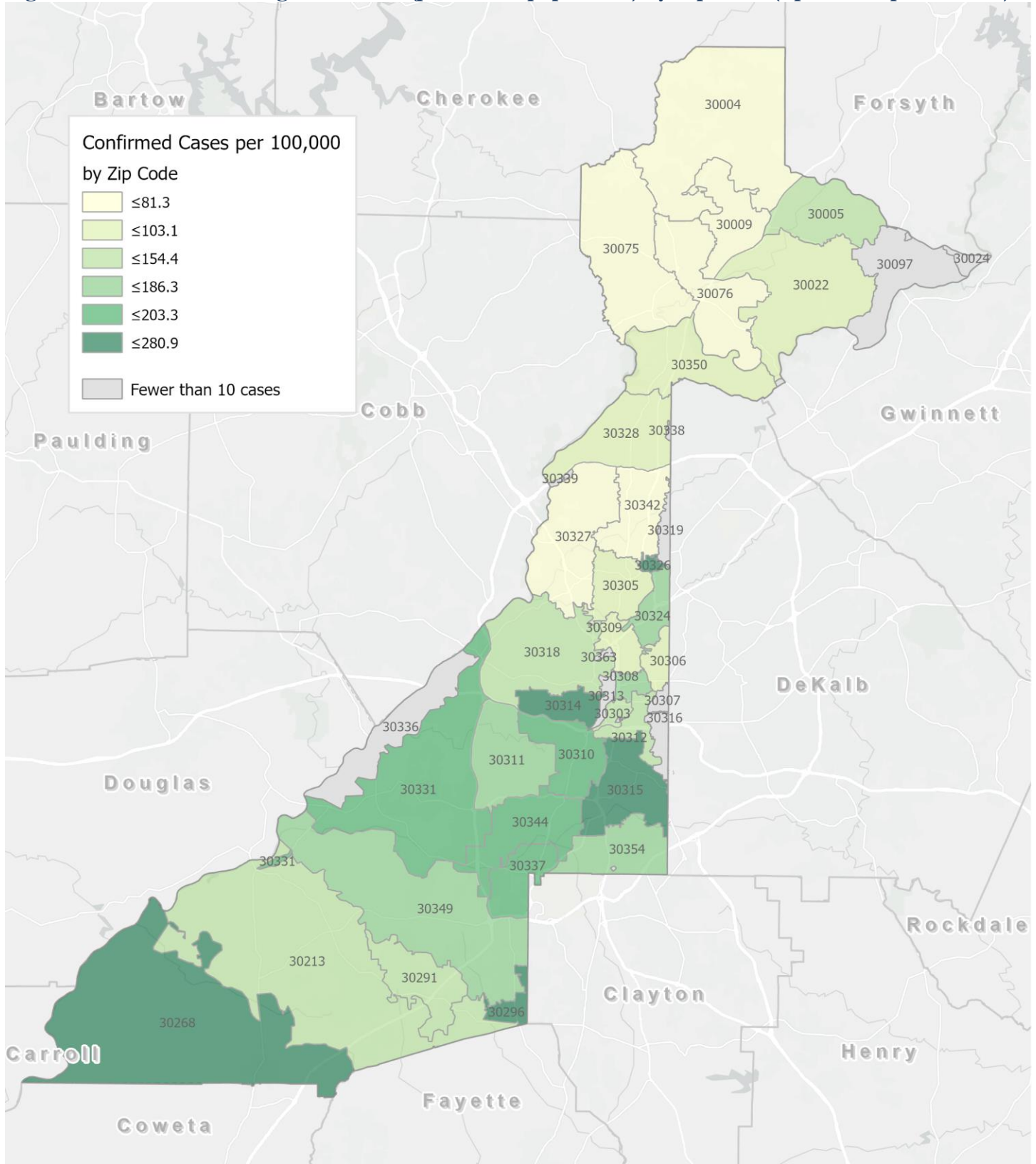
\*Rates shown are per 100,000 persons | All data shown are preliminary and are subject to change as testing results get updated.

Fig. 9. Density Map – New COVID-19 Cases (April 10 – April 23, 2021) in Fulton County



**New COVID-19 cases:** Cases diagnosed in most recent 14 days (based on reported dates of positive sample collection). To allow for lag in reporting results of positive cases from samples collected in the immediate past 7 days, data used for incident diagnoses analyses are moved back by one week. Map reflects new COVID-19 cases diagnosed between April 10<sup>th</sup> and April 23<sup>rd</sup>, 2021 across Fulton County, excluding LTCF cases.

Fig. 10. New COVID-19 Diagnoses Rates (per 100,000 population) by Zip Code (April 10 – April 23, 2021)



\*Rates shown are per 100,000 populations.

**New COVID-19 cases:** Cases diagnosed in most recent 14 days (based on reported dates of positive sample collection). To allow for lag in reporting results of positive cases from samples collected in the immediate past 7 days, data used for incident diagnoses analyses are moved back by one week. Data used excludes outbreak-related cases at long-term care facilities and map shown reflects only the new non-LTCF cases diagnosed between the dates shown in map title. See page 12 for zip code break down table.

## COVID-19 NEW CASE<sup>1</sup> COUNTS BY ZIP CODE

Zip Code	Recent 14-day reporting period (4/10–4/23)	Previous 14-day reporting period (3/27–4/9)	% Change between reporting periods <sup>2</sup>
<b>All Fulton</b>	<b>1486</b>	<b>1226</b>	<b>↑ 21.2%</b>
30004	50	32	↑ 56.3%
30005	54	23	↑ 134.8%
30009	13	22	↓ 40.9%
30022	66	70	↓ 5.7%
30023	0	0	-
30024	<10	0	-
30075	35	48	↓ 27.1%
30076	32	53	↓ 39.6%
30080	0	0	-
30097	<10	13	↓ 46.2%
30098	0	0	-
30135	0	0	-
30138	0	0	-
30139	0	0	-
30213	60	52	↑ 15.4%
30268	18	<10	↑ 200.0%
30291	33	36	↓ 8.3%
30296	12	<10	↑ 71.4%
30301	0	0	-
30303	11	<10	↑ 57.1%
30305	32	36	↓ 11.1%
30306	13	<10	↑ 44.4%
30307	<10	<10	-
30308	34	22	↑ 54.5%
30309	30	30	-
30310	59	27	↑ 118.5%
30311	61	41	↑ 48.8%
30312	39	31	↑ 25.8%
30313	<10	14	↓ 42.9%
30314	77	45	↑ 71.1%
30315	84	55	↑ 52.7%
30316	13	<10	↑ 44.4%
30318	70	78	↓ 10.3%
30319	<10	10	↓ 10.0%
30321	0	0	-
30324	49	35	↑ 40.0%
30326	11	<10	↑ 57.1%
30327	14	12	↑ 16.7%
30328	38	43	↓ 11.6%
30331	119	79	↑ 50.6%
30334	<10	0	-
30336	<10	<10	-
30337	23	16	↑ 43.8%

Zip Code	Recent 14-day reporting period (4/10–4/23)	Previous 14-day reporting period (3/27–4/9)	% Change between reporting periods
30338	0	0	-
30339	<10	0	-
30340	0	0	-
30341	0	0	-
30342	29	48	↓ 39.6%
30344	69	64	↑ 7.8%
30345	0	0	-
30349	114	80	↑ 42.5%
30350	40	33	↑ 21.2%
30354	29	17	↑ 70.6%
30358	0	0	-
30363	<10	<10	-
30374	0	0	-
30606	0	0	-
31131	0	0	-
31150	0	0	-
Unknown	<10	<10	-

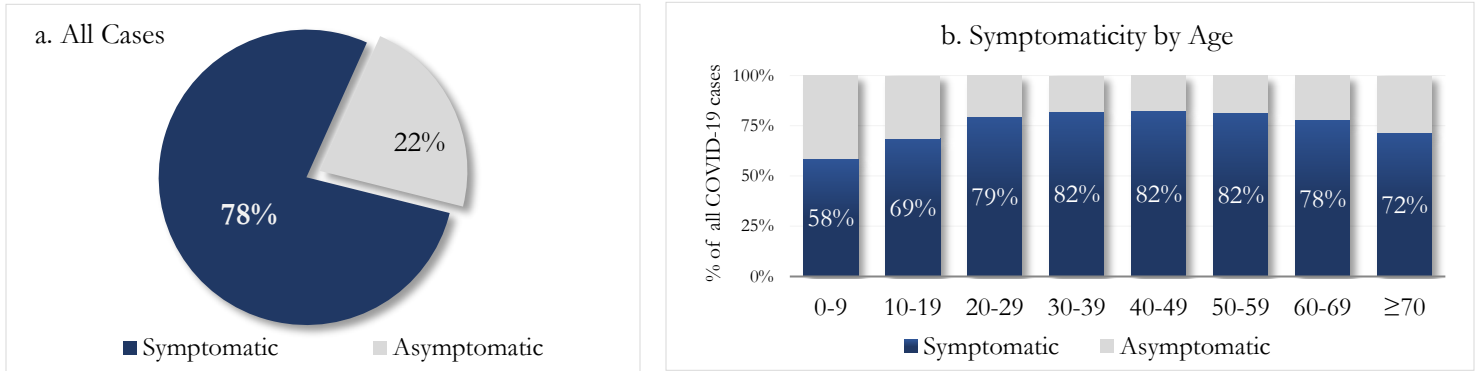
<sup>1</sup>**New cases:** Cases diagnosed in most recent 28 days (based on reported dates of positive sample collection). To allow for lag in reporting results of new diagnoses from samples collected in the most recent week, data used for incident diagnoses analyses were moved back by one week. <sup>2</sup>**Percent change:** These reflect the percentage increase or decrease of new diagnoses between the 14 days preceding the past 7 days and the 14 days preceding that. Changes in ZIP codes with less than 10 cases in both 2 week intervals are not reported.



## REPORTING SYMPTOMS AMONG PERSONS WITH COVID-19 IN FULTON

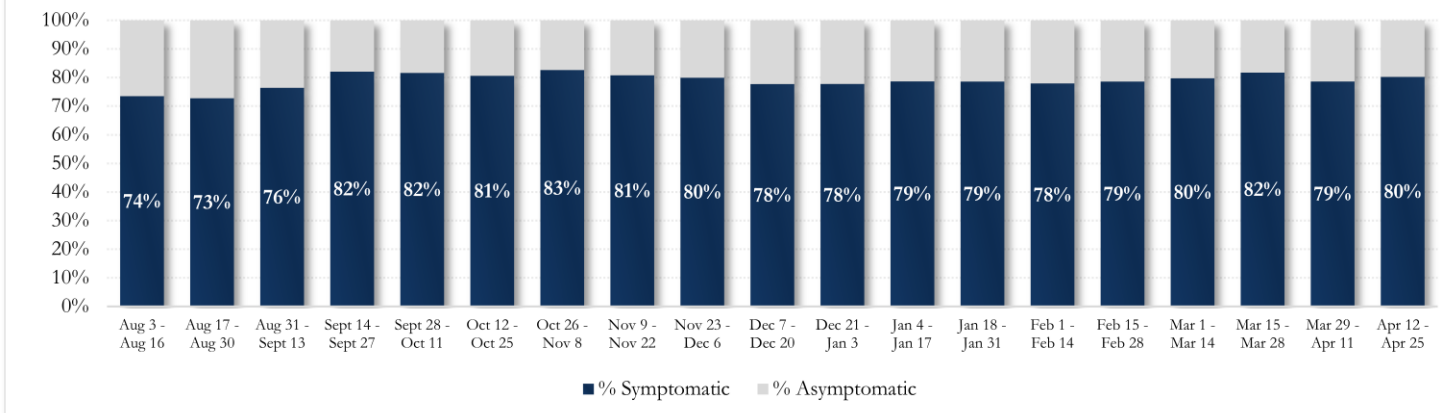
People with COVID-19 have reported a wide range of symptoms ranging from mild symptoms to severe illness. Symptoms may appear 2-14 days after exposure to the virus. Symptoms reported include: cough, shortness of breath/difficulty breathing, fever, chills, muscle pain, headache, sore throat, congestion, nausea or vomiting, diarrhea, fatigue, or new loss of taste or smell – Centers for Disease Control and Prevention (CDC) – Centers for Disease Control and Prevention (CDC) <https://www.cdc.gov/coronavirus/2019-ncov/symptoms-testing/symptoms.html>

**Fig. 11a & b. Total Proportion Reporting Symptoms in Fulton**



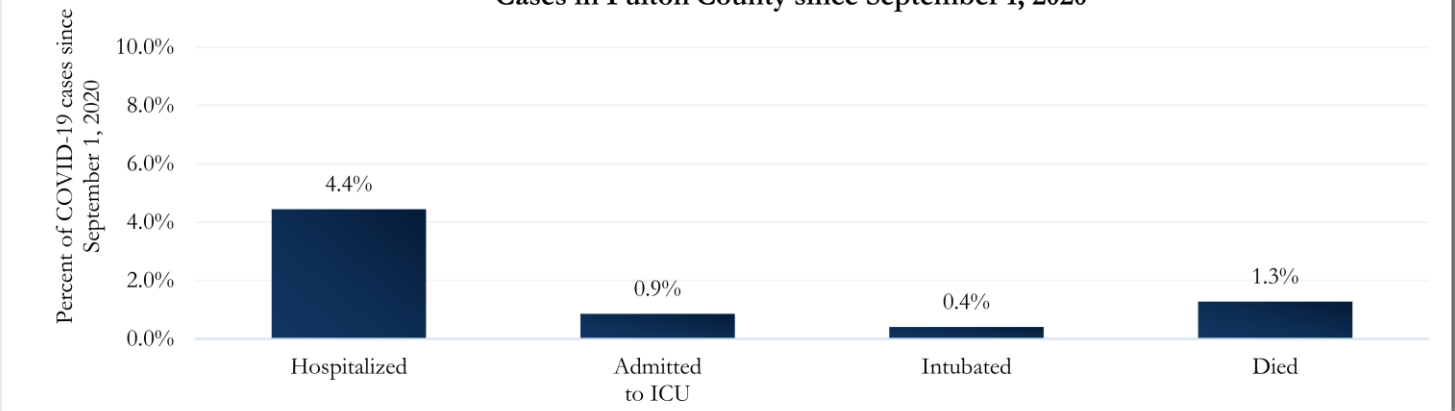
\*\*\*COVID-19 cases who have been case interviewed or had medical charts reviewed as of 4/30/21 only. n = 51,354\*\*\*

**Fig 12. Total Proportion Reporting Symptoms in Fulton County Over Time**



## COVID-19 HOSPITALIZATIONS, ICU ADMISSIONS AND DEATHS IN FULTON

**Fig. 13. Hospitalizations, ICU Admissions, Intubations, and Deaths among COVID-19 Cases in Fulton County since September 1, 2020**



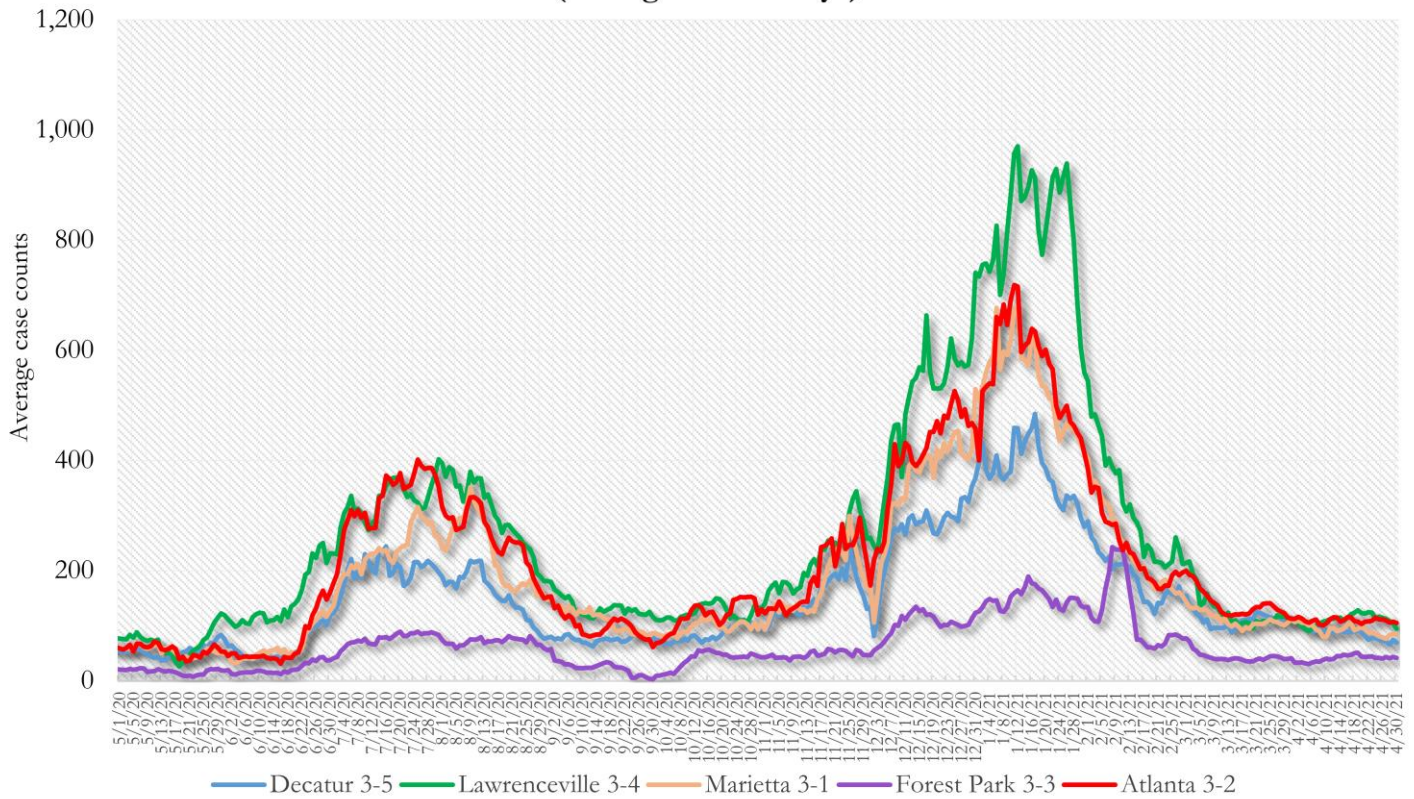
**DEMOGRAPHIC DISTRIBUTIONS – COVID-19 CASES AND DEATHS****Table A** - Cumulative and recent confirmed COVID-19 case and death counts by gender, age, and race/ethnicity in Fulton County, Georgia. Past 28 day period refers to March 27 – April 23, 2021

	Total Confirmed Cases	% of Total Cases	Confirmed Cases past 28 days	% of Confirmed Cases past 28 days	Total Confirmed Deaths	% of Total Deaths	Confirmed Deaths past 28 days	% of Confirmed Deaths past 28 days
<b>TOTAL</b>	<b>81620</b>		<b>2607</b>		<b>1272</b>		<b>17</b>	
Female	42984	52.7%	1409	54.0%	600	47.2%	<10	52.9%
Male	38183	46.8%	1180	45.3%	671	52.8%	<10	47.1%
Unknown*	453	<1%	18	<1%	<10	<1%	0	-
0-9	2974	3.6%	159	6.1%	0	-	0	-
10-19	8398	10.3%	382	14.7%	<10	<1%	0	-
20-29	18413	22.6%	537	20.6%	<10	<1%	0	-
30-39	15660	19.2%	548	21.0%	22	1.7%	0	-
40-49	12460	15.3%	382	14.7%	38	3.0%	0	-
50-59	11149	13.7%	357	13.7%	108	8.5%	<10	11.8%
60-69	6531	8.0%	147	5.6%	234	18.4%	<10	17.6%
>70	5929	7.3%	95	3.6%	864	67.9%	12	70.6%
Unknown*	106	<1%	0	-	0	-	0	-
Asian, NH	2910	3.6%	105	4.0%	20	1.6%	<10	11.8%
Black, NH	32767	40.1%	1370	52.6%	783	61.6%	12	70.6%
White, NH	26260	32.2%	478	18.3%	406	31.9%	<10	17.6%
Hispanic, all races	8252	10.1%	216	8.3%	53	4.2%	0	-
Other, NH	3856	4.7%	99	3.8%	<10	<1%	0	-
Unknown*	7575	9.3%	339	13.0%	<10	<1%	0	-

\*Unknown includes cases not yet interviewed. 28 days delayed by seven to account for lag in reporting lab results. Deaths refer to all persons who had a positive PCR test result for Covid-19 and there is evidence that COVID-19 was the cause of death or a significant contributor to their death.

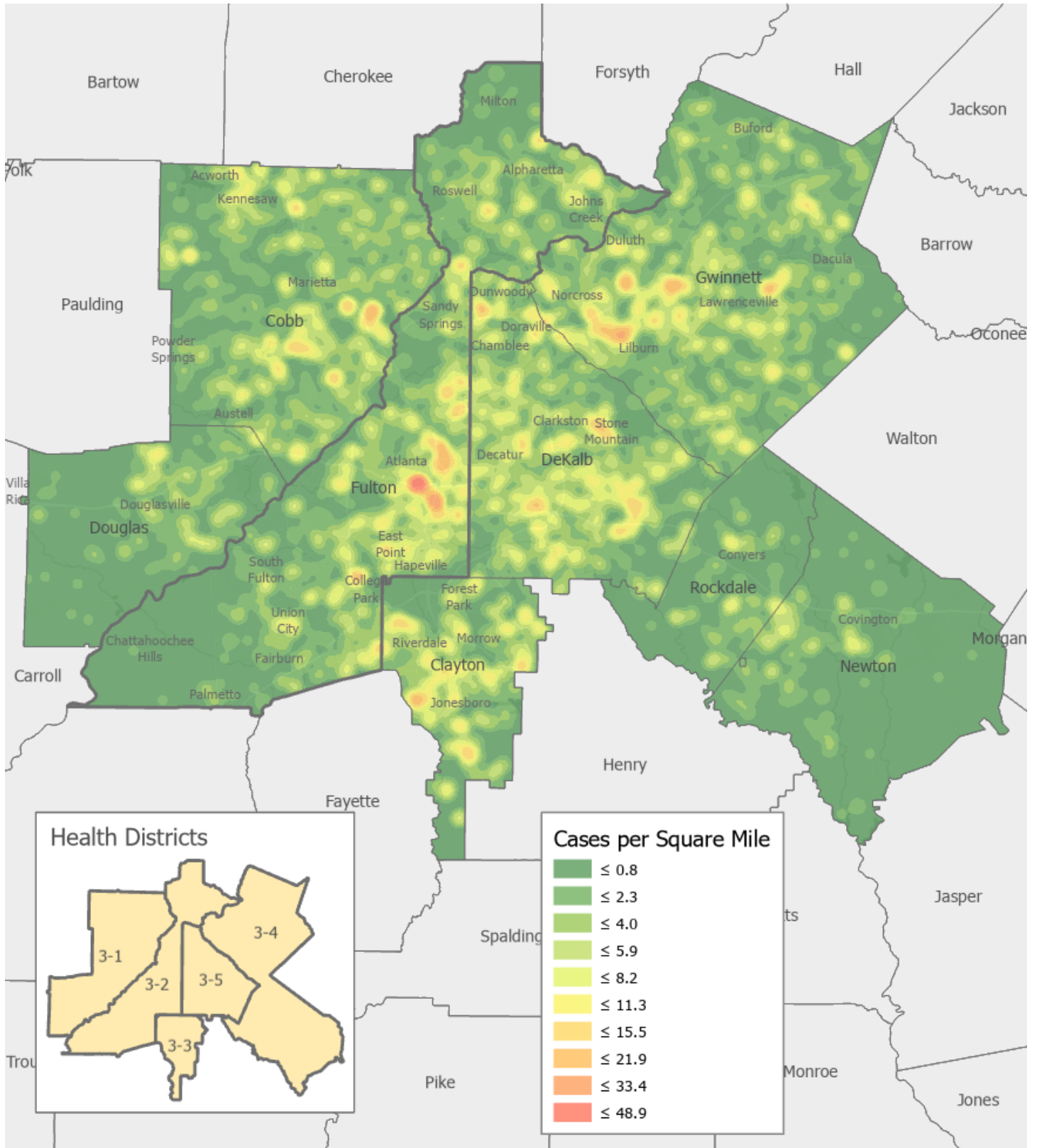
### COVID-19 CASE TRENDS IN FULTON AND SURROUNDING DISTRICTS

**Fig. 14. Daily Case Counts for Atlanta Metro Districts  
(Averaged over 7 days)**



\*Graph shows the average number of cases calculated from the daily cumulative case counts in the metro Atlanta districts. Increases in daily cumulative case counts may include cases diagnosed earlier during the pandemic but were only recently reported to the state as cases diagnosed belonging to these districts.

Fig. 15. COVID-19 Cases in Fulton County and Surrounding Districts (April 10 – April 23, 2021)



The following data are updated every two weeks.

Last updated 4/27/2021

Data are from confirmed cases and PCR testing only.

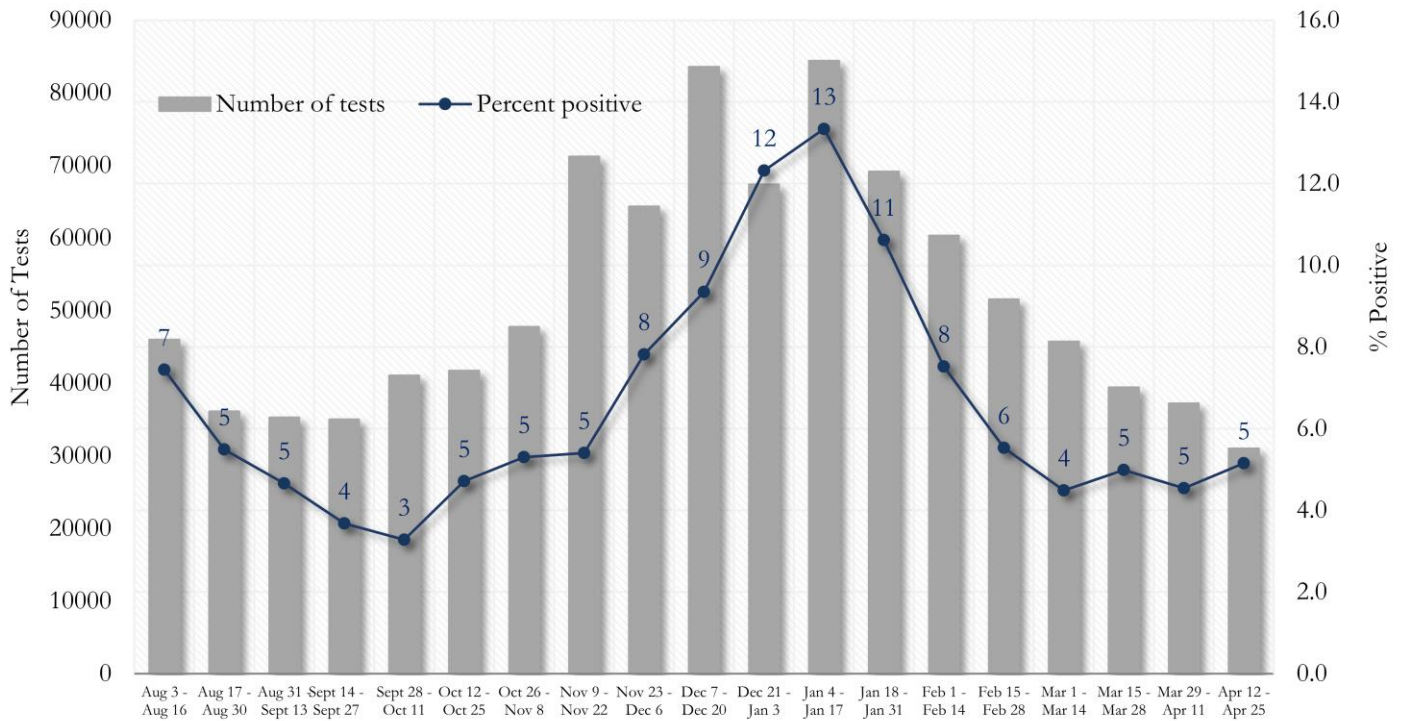
These data are generated using a fixed start date and counted forward in 14-day intervals. Using these time blocks allows for the stability in trends over time and accounts for delays in reporting lab results.

In the interest of keeping the reports concise and useful, the cumulative counts updated on a monthly basis can now be viewed between updates at the Fulton County Board of Health website [here](#).

Please visit the Georgia Department of Public Health Daily Status Report [here](#) for cumulative daily counts.

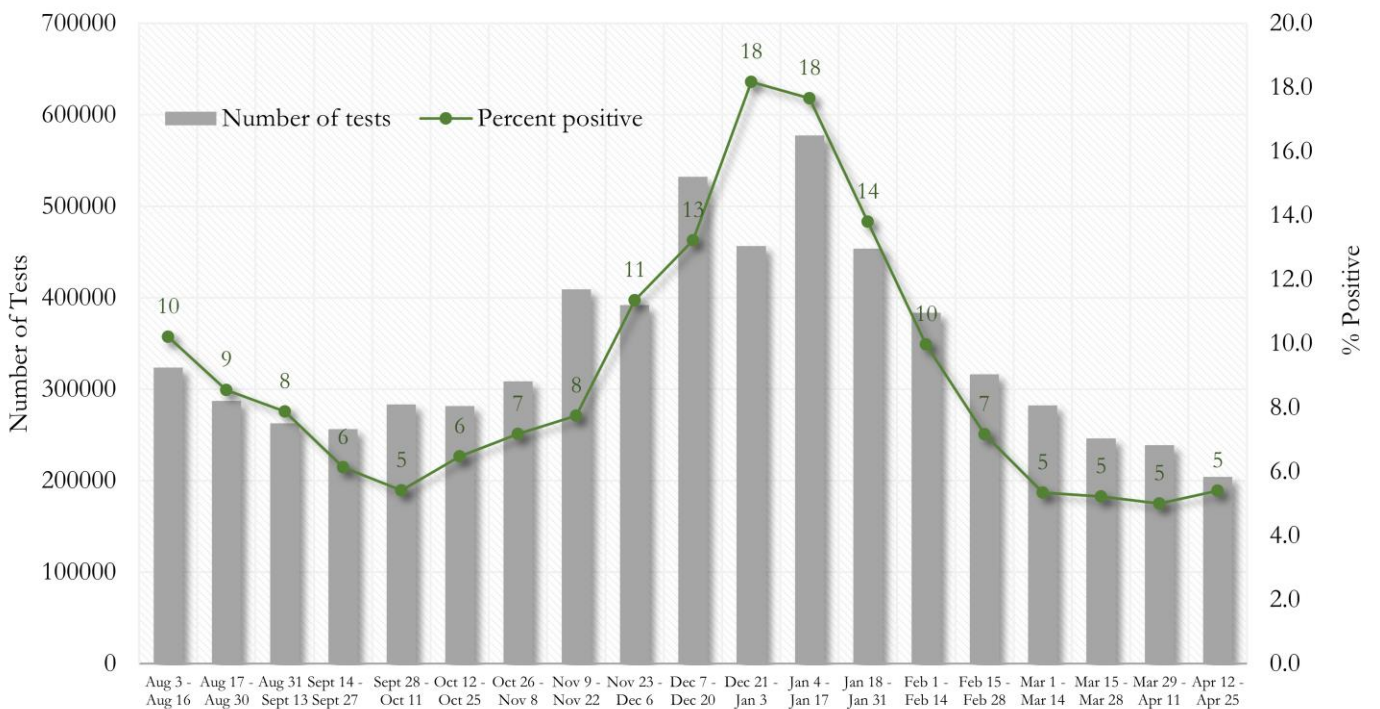
**COVID-19 TESTING AND POSITIVITY IN FULTON COUNTY AND GEORGIA**

**Fig. 16. Trends in Positive COVID-19 Tests in Fulton County by 14-day Periods**



\*Data on Polymerase Chain Reaction (PCR) tests only included.

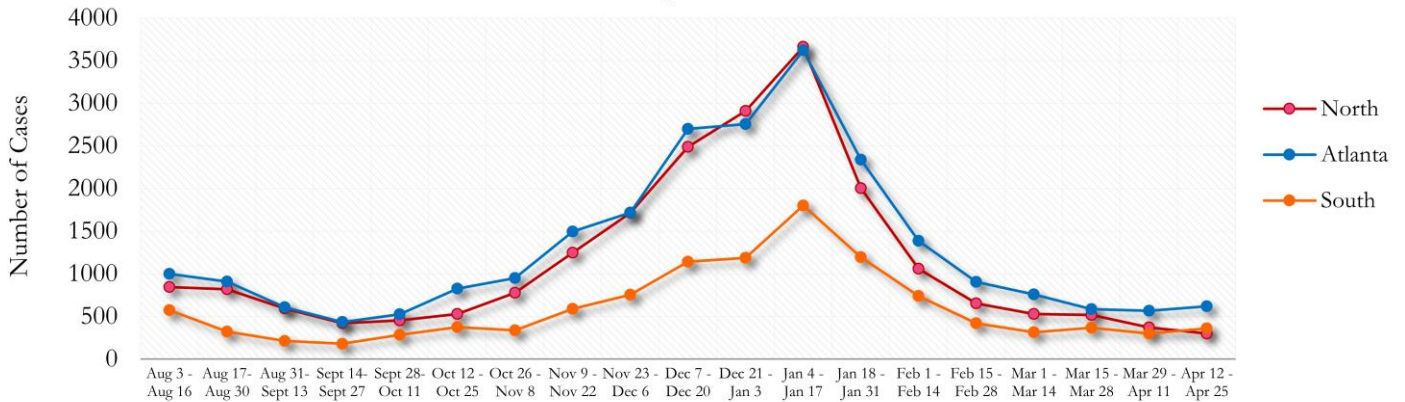
**Fig. 17. Trends in Positive COVID-19 Tests in Georgia by 14-day Periods**



\*Data on Polymerase Chain Reaction (PCR) tests only included.

**TRENDS IN COVID-19 CASES AMONG DEMOGRAPHIC GROUPS (14 DAY PERIODS)**

**Fig. 18. Trends in Geographic distribution of COVID-19 Cases in Fulton County by 14-day periods**

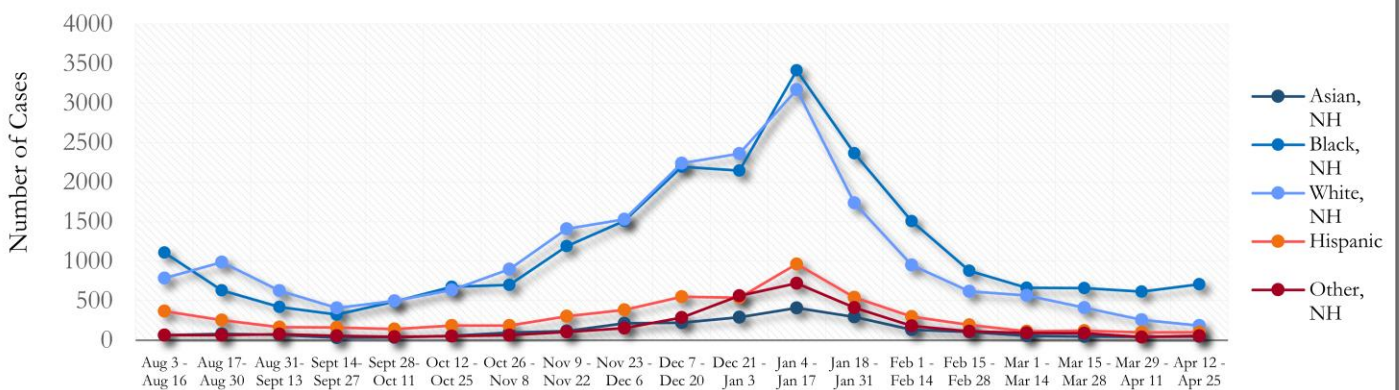


In the past two weeks, Atlanta accounted for the majority of new cases.

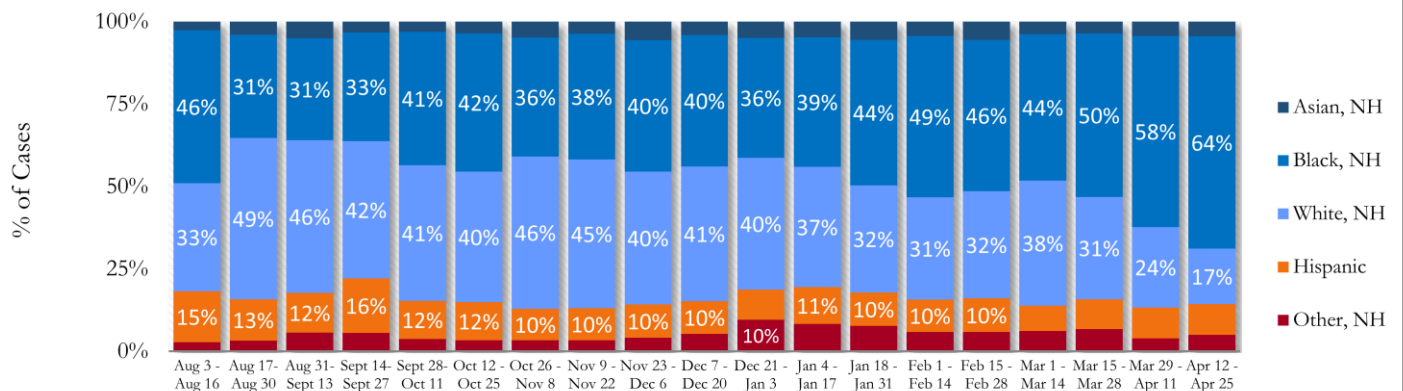
\*North - Includes all Fulton cities north of Atlanta (Alpharetta, Johns Creek, Milton, Mountain Park, Roswell, Sandy Springs)

\*South - Includes all Fulton cities south of Atlanta (Chattahoochee Hills, College Park, East Point, Fairburn, Hapeville, Palmetto, South Fulton, and Union City)

**Fig. 19. Trends in Racial Distribution of COVID-19 Cases in Fulton County by 14-day periods**

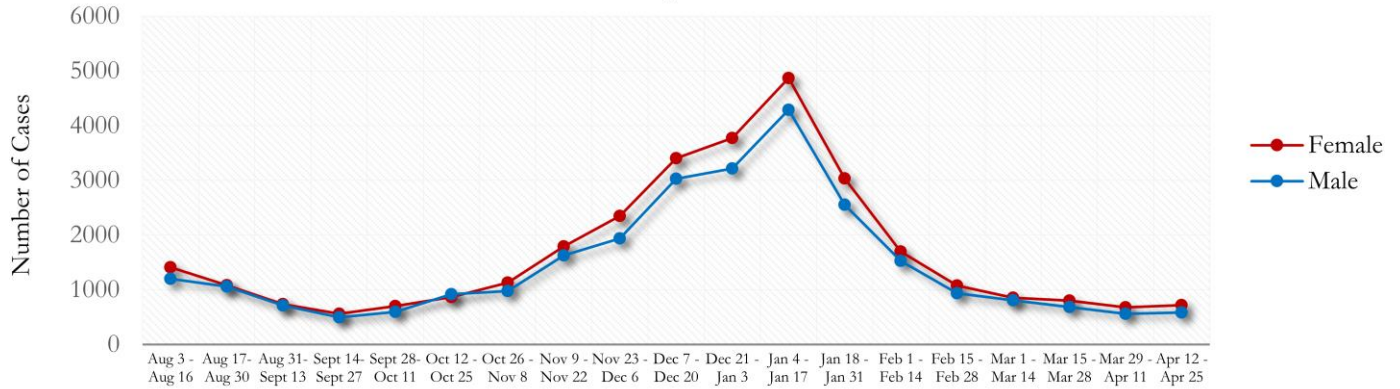


**Fig. 20. Racial Distribution of COVID-19 Cases in Fulton County by 14-day periods**

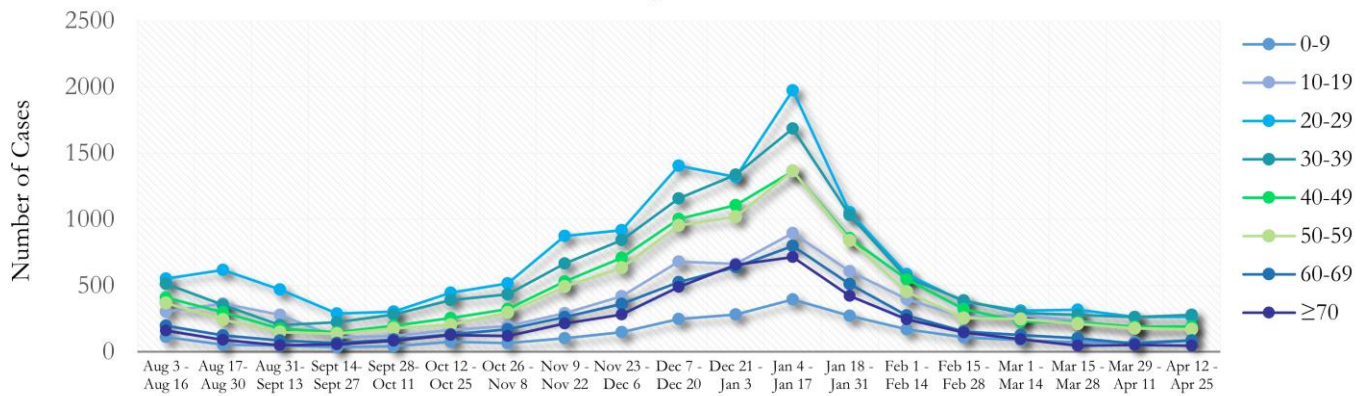


About 9% of all Fulton County COVID cases are missing data on patient race and ethnicity and in the past two weeks, about 16% of cases are missing this data.

**Fig. 21. Trends in Gender Distribution of COVID-19 Cases in Fulton County by 14-day periods**

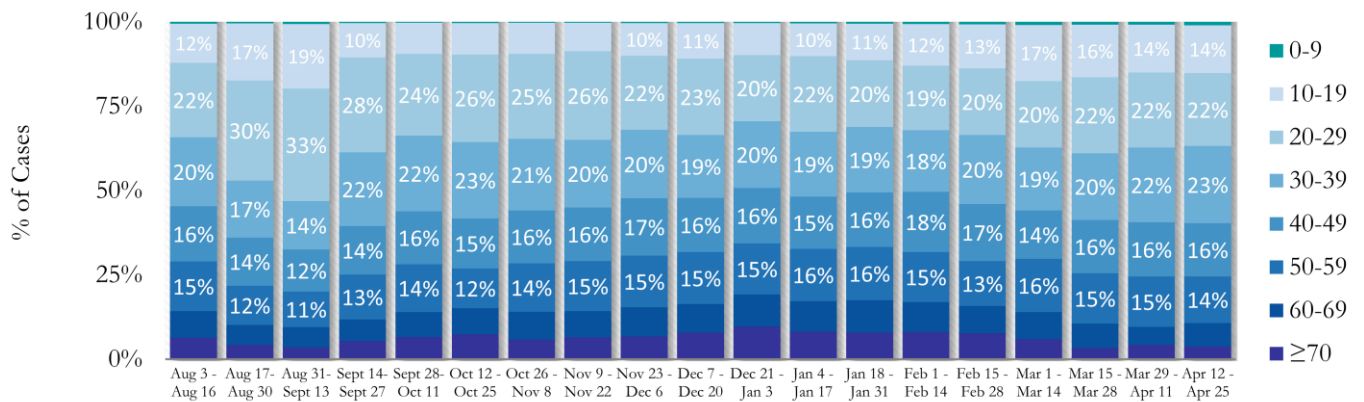


**Fig. 22. Trends in Age Distribution of COVID-19 Cases in Fulton County by 14-day periods**



In the most recent two weeks, 20-29 year olds and 30-39 year olds accounted for the majority of new cases.

**Fig. 23. Age Distribution of COVID-19 Cases in Fulton County by 14-day periods**

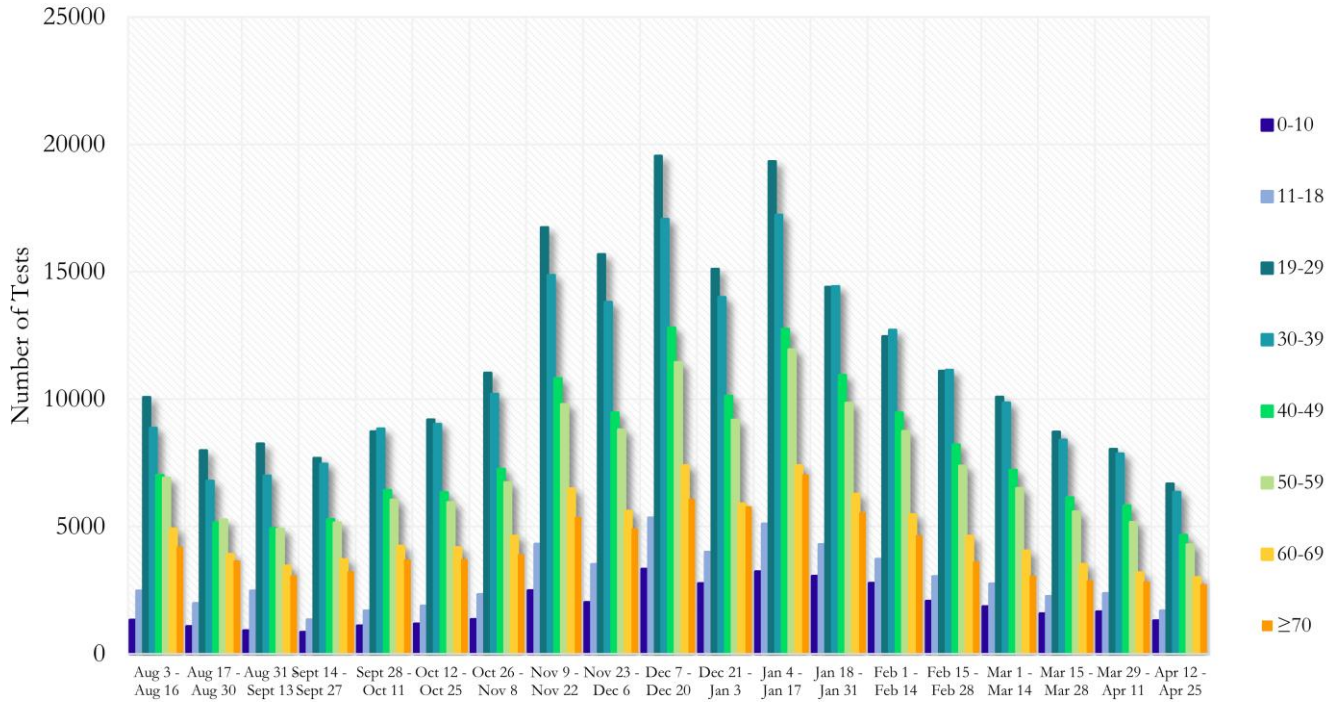


Value labels under 10% are not shown.



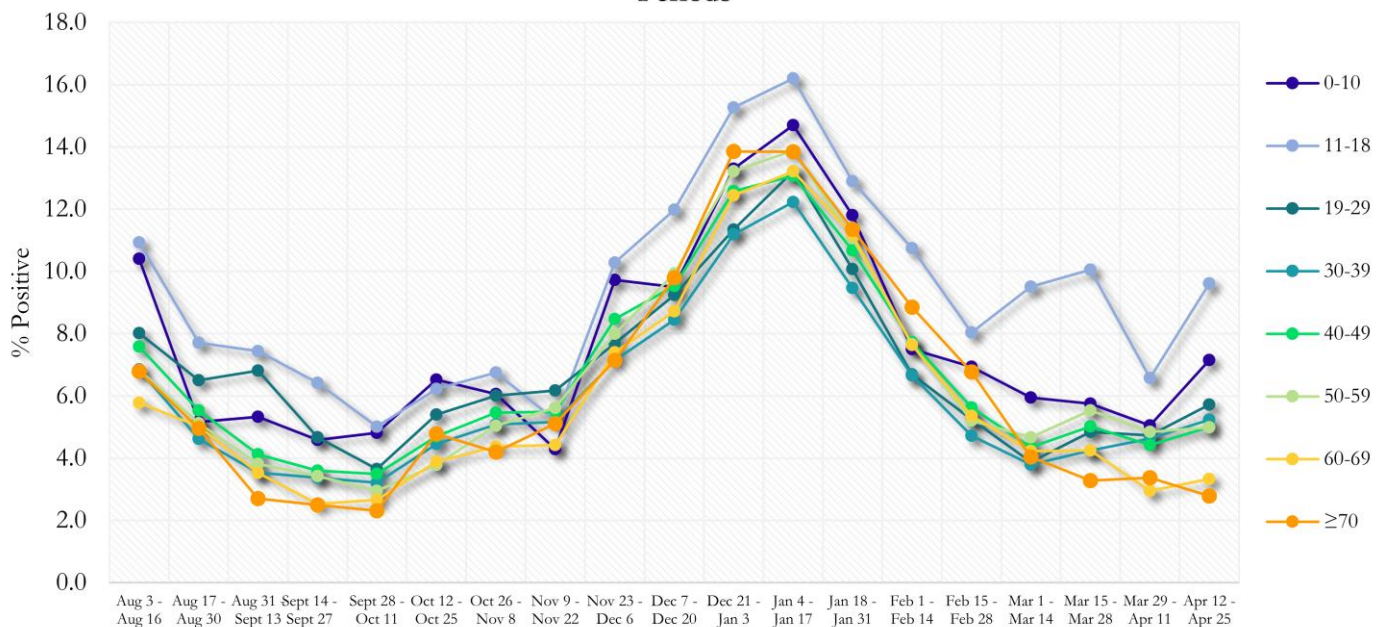
**COVID-19 TESTING AND POSITIVITY IN FULTON COUNTY BY AGE AND RACE**

**Fig. 24. COVID-19 Tests by Age in Fulton County by 14-day Periods**



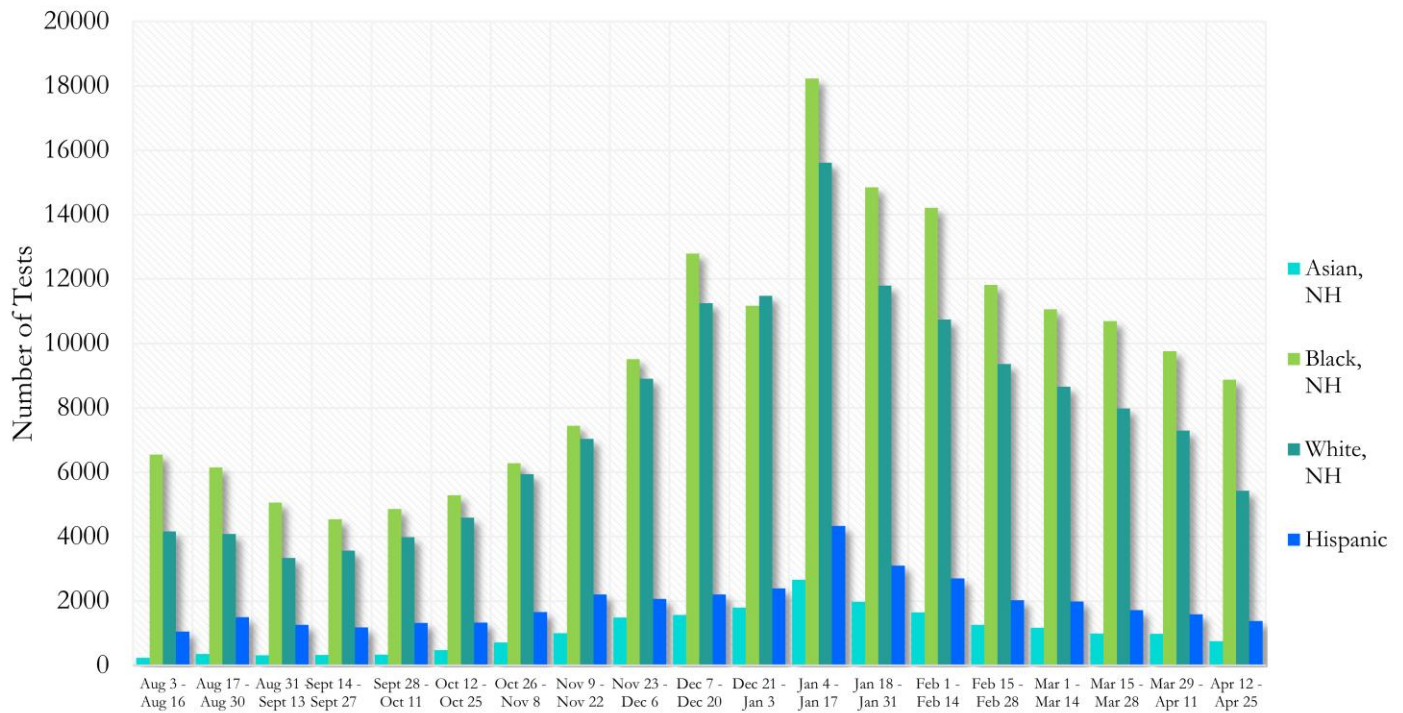
\*Data on Polymerase Chain Reaction (PCR) tests only included.

**Fig. 25. Percent Positive COVID-19 Tests by Age Group in Fulton County by 14-day Periods**



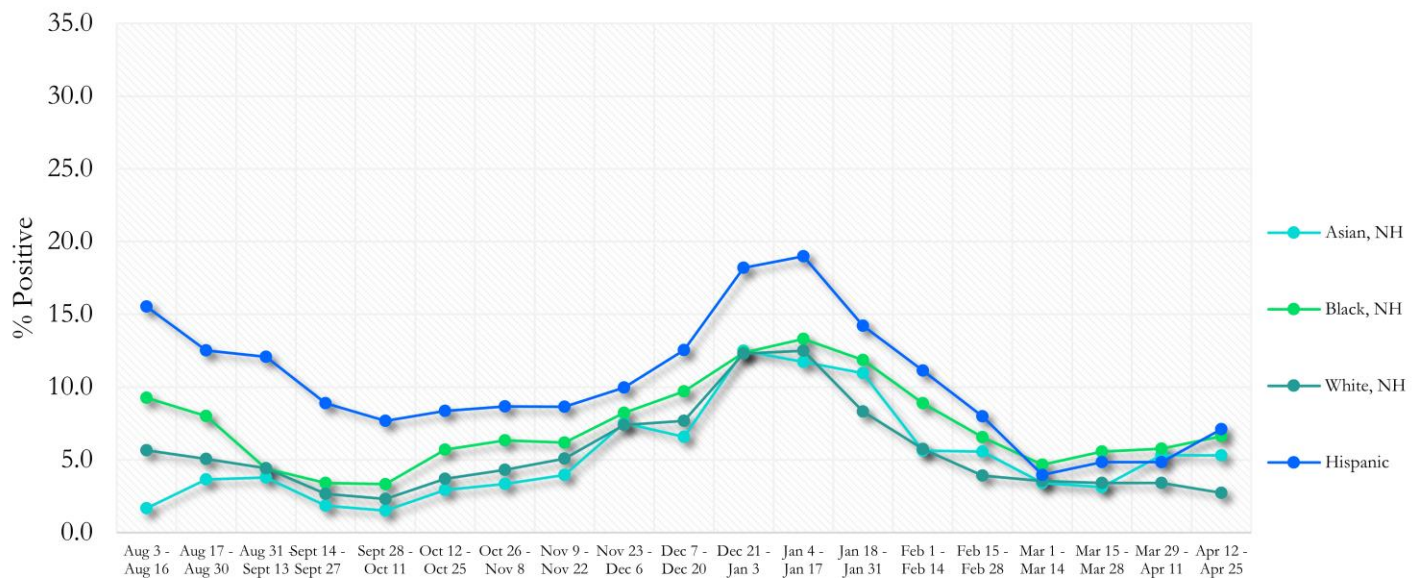
\*Data on Polymerase Chain Reaction (PCR) tests only included.

**Fig. 26. COVID-19 Tests by Race and Ethnicity in Fulton County by 14-day Periods**



\*Data on Polymerase Chain Reaction (PCR) tests only included. For the recent two weeks, 47% of test results did not have race/ethnicity information.

**Fig. 27. Percent Positive COVID-19 Tests by Race and Ethnicity in Fulton County by 14-day Periods**



\*Data on Polymerase Chain Reaction (PCR) tests only included.

## COVID-19 IN LONG-TERM CARE FACILITIES IN FULTON COUNTY

Older persons (aged 65 years and older) and persons who live in nursing homes or other long-term care facilities seem to be at higher risk for developing more serious complications from COVID-19. Extra precautions are recommended for individuals within this risk groups – Centers for Disease Control and Prevention (CDC 2020) <https://www.cdc.gov/coronavirus/2019-ncov/need-extra-precautions/people-at-higher-risk.html>

**Fig. 28. Cumulative COVID-19 Diagnoses and Deaths in Fulton County Associated with Long-Term Care Facilities**



## CURRENT COVID-19 POSITIVITY:

**Fig. 29. Percentage of LTCF Residents with Current COVID-19 Infection**



\*This data comes from facilities self-reporting to DPH and is thus subject to change as more facilities report or provide updated counts. Current total resident count = 4,348