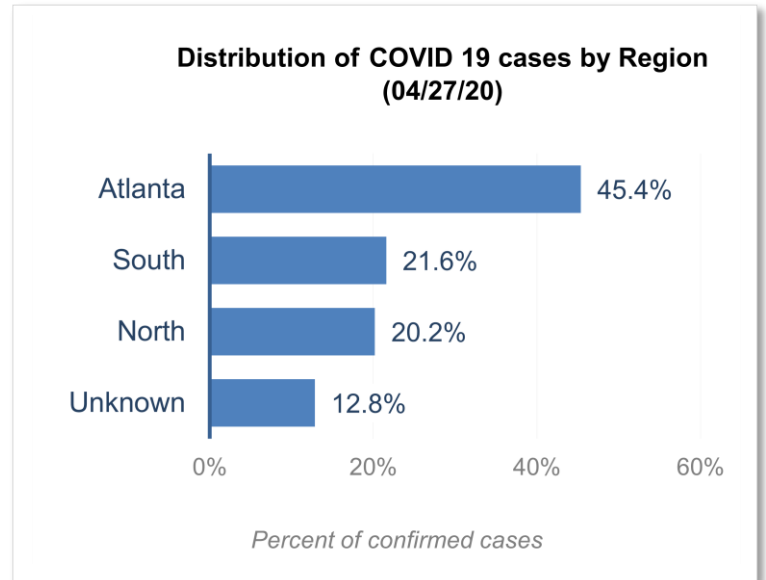


**DISTRIBUTION OF COVID-19 DIAGNOSES BY REGION**

Fulton Region	% of current cases
Atlanta	45.4%
North <sup>1</sup>	20.2%
South <sup>2</sup>	21.6%
Unincorporated/Unknown	12.8%

<sup>1</sup>Includes all Fulton County cities north of Atlanta metro (Alpharetta, Milton, Johns Creek, Roswell, Sandy Springs, Mountain Park)

<sup>2</sup>Includes all cities south of Atlanta (College Park, Chattahoochee Hills, East Point, Hapeville, Palmetto, South Fulton, Fairburn, Union City)



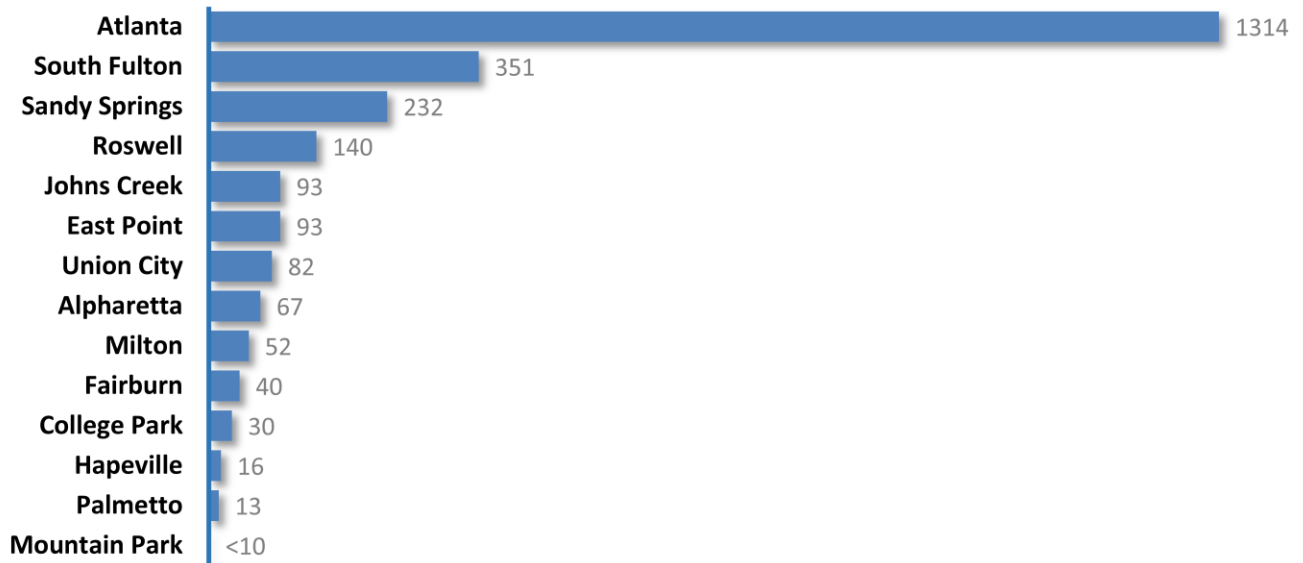
**DISTRIBUTION OF COVID-19 DIAGNOSES BY CITY**

	Previous Count (4/29/2020)	Current Count (05/01/20)	Percent of Current Total	% Change	COVID-19 Diagnoses Rate (per 100,000 persons)*
Atlanta	1271	1314	45.4%	3.4%	297.8
South Fulton	346	351	12.1%	1.4%	369.0
Sandy Springs	218	232	8.0%	6.4%	220.1
Roswell	133	140	4.8%	5.3%	148.5
East Point	90	93	3.2%	3.3%	265.9
Johns Creek	91	93	3.2%	2.2%	111.2
Union City	66	82	2.8%	24.2%	391.2
Alpharetta	63	67	2.3%	6.3%	103.6
Milton	50	52	1.8%	4.0%	136.2
Fairburn	40	40	1.4%	0.0%	272.0
College Park	30	30	1.0%	0.0%	216.2
Palmetto	12	13	0.4%	8.3%	297.3
Hapeville	16	16	0.6%	0.0%	243.1
Mountain Park	<10	<10	0.0%	0.0%	160.0
Unknown	370	372	12.8%	3.4%	-

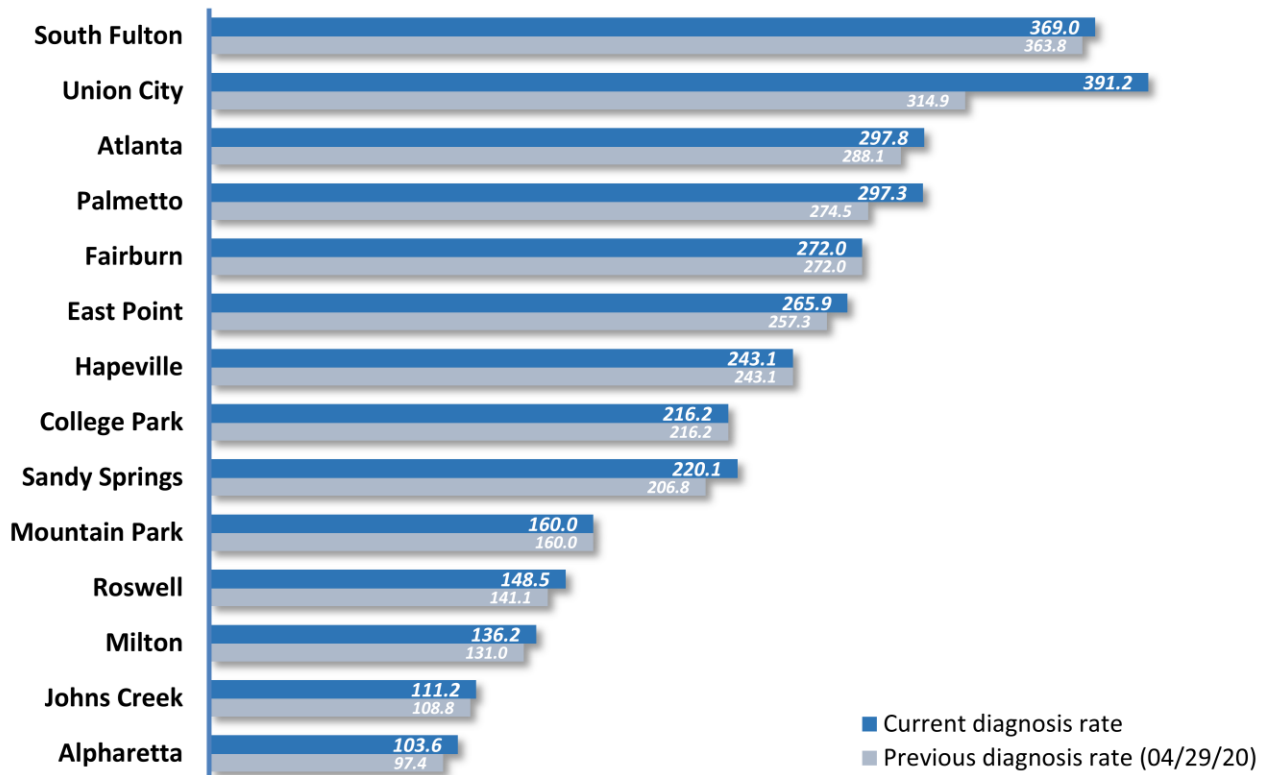
\*Source: US Census Bureau. Population estimates (as at July 1, 2018) used to calculate diagnoses rate. Please note that population count used to calculate diagnosis rate in Atlanta only reflects the Fulton County portion of the city (excludes 10% or thereabouts in DeKalb). This also applies to College Park's numbers (excludes the part in Clayton).

\*\* Data cleaning (either during detailed data collection that takes place at case interviews or during the geo-coding process) may lead to reassignment of few cases from one territory to another and these may appear as "decreases" when compared to the previous day's count. These do not reflect errors in the data collection or analysis process but only reflect the minor day-to-day fluctuations in case counts that arise in an evolving public health database like COVID's.

Number of confirmed COVID-19 Diagnoses in Fulton County by City (05/01/20)

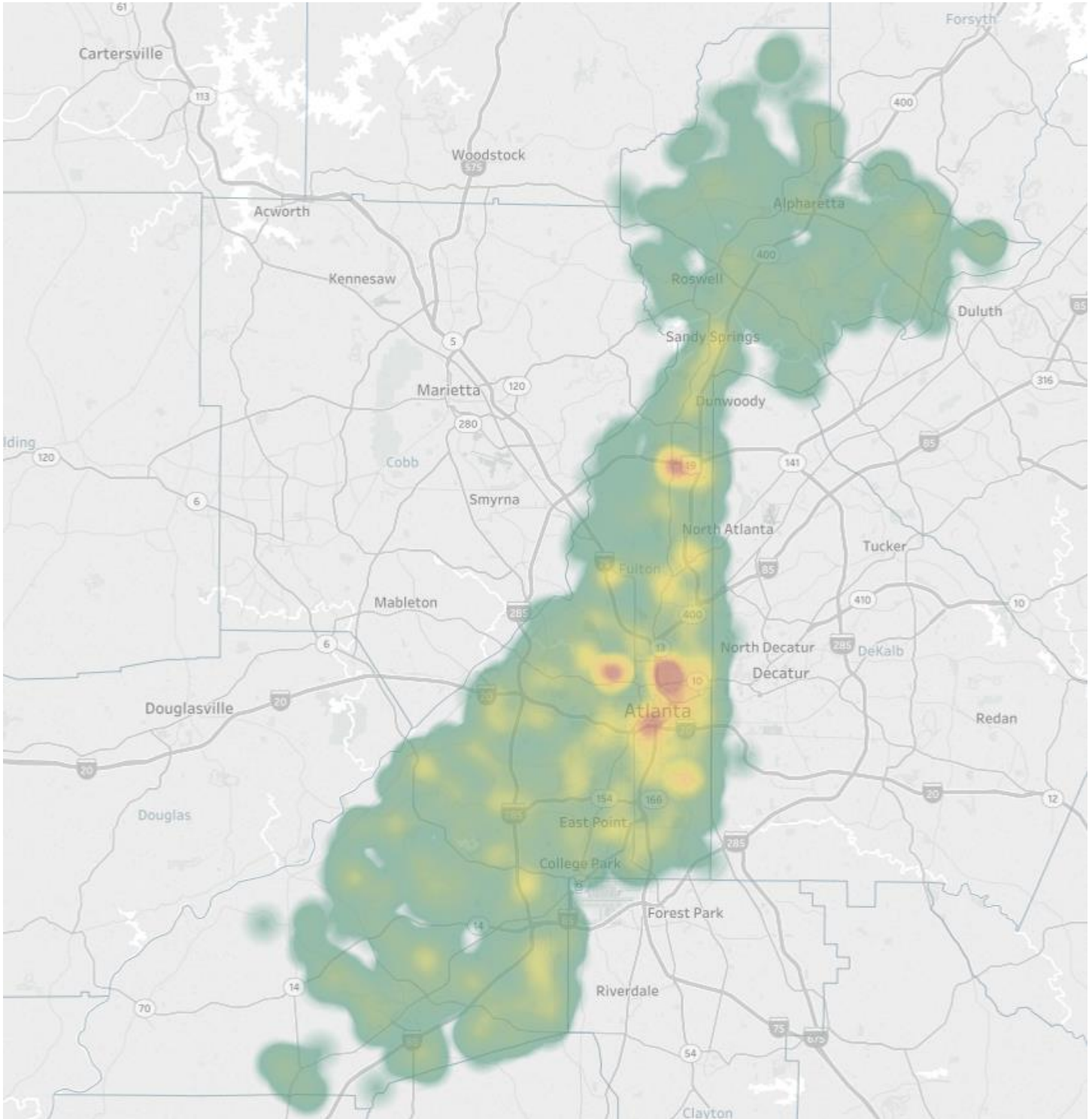


COVID-19 Diagnoses Rate in Fulton County by City (05/01/20)



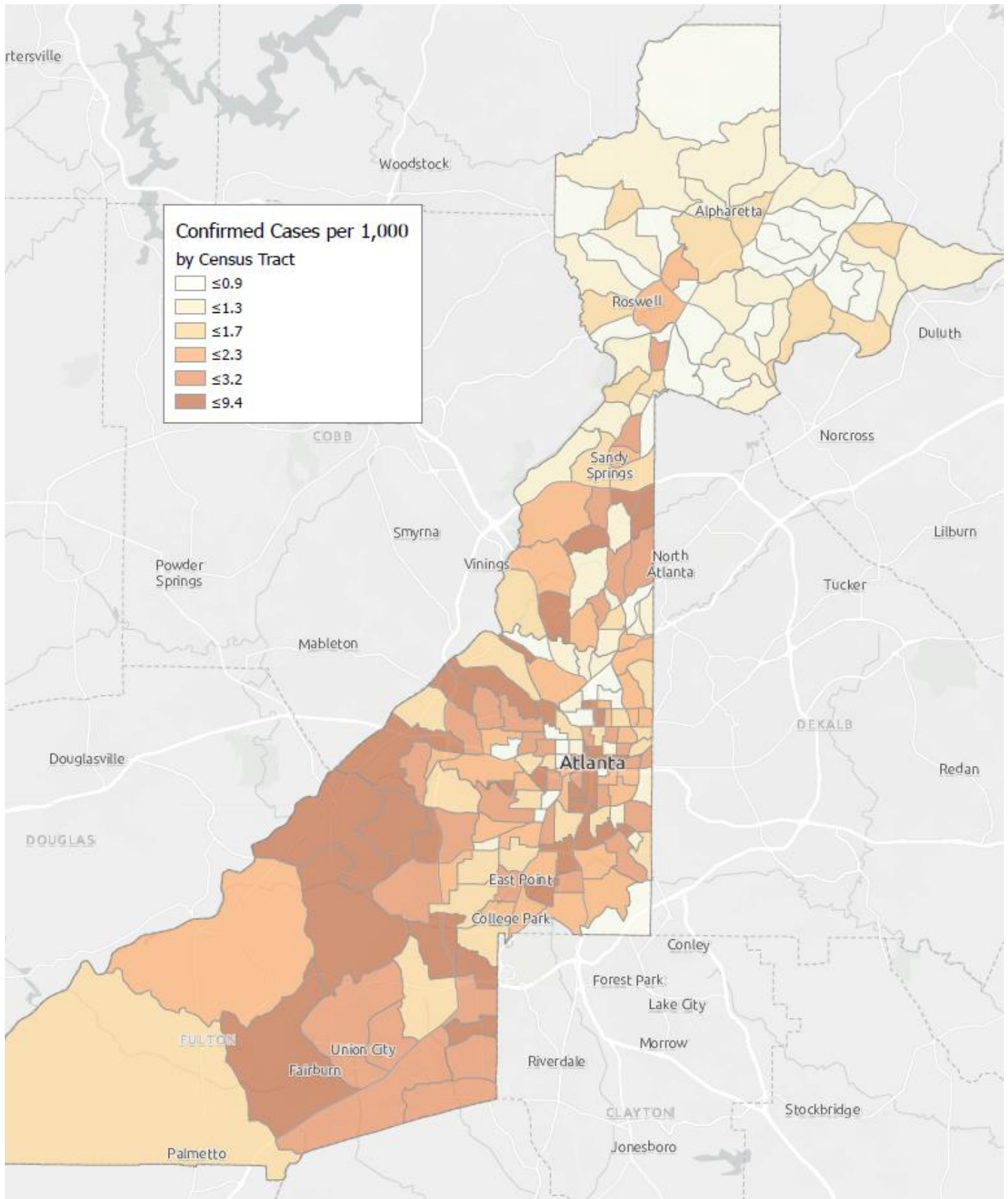
\*Rates shown are per 100,000 persons

### Density Map of COVID-19 Cases in Fulton County (05/01/20)



NB. Data used excludes the outbreak-related cases diagnosed at long-term care facilities and reflects the current geographical distribution of COVID19 diagnoses in the general Fulton County community.

### COVID-19 Distribution by Census Tract (05/01/2020)



NB. Data used excludes the outbreak-related cases diagnosed at long-term care facilities and reflects the current geographical distribution of COVID19 diagnoses in the general Fulton County community.

## DISTRIBUTION COVID-19 DIAGNOSES BY ZIP CODE

ZIP code	Previous Count (4/29/2020)	Current Count (05/01/20)	Percent of Current Total	% Change
30331	270	271	9.4%	0.4%
30318	152	158	5.5%	3.9%
30349	180	183	6.3%	1.7%
30213	112	113	3.9%	0.9%
30315	101	102	3.5%	1.0%
30344	89	90	3.1%	1.1%
30311	93	97	3.3%	4.3%
30342	118	124	4.3%	5.1%
30314	60	63	2.2%	5.0%
30310	74	74	2.6%	0.0%
30308	64	64	2.2%	0.0%
30022	70	69	2.4%	-1.4%**
30327	60	62	2.1%	3.3%
30004	66	70	2.4%	6.1%
30309	98	96	3.3%	-2.0%**
30076	50	54	1.9%	8.0%
30291	92	110	3.8%	19.6%
30350	53	55	1.9%	3.8%
30075	69	73	2.5%	5.8%
30328	56	59	2.0%	5.4%
30316	33	32	1.1%	-3.0%
30312	164	167	5.8%	1.8%
30005	38	39	1.3%	2.6%
30305	47	49	1.7%	4.3%
30306	36	37	1.3%	2.8%
30324	47	45	1.6%	-4.3%**
30337	24	24	0.8%	0.0%
30009	25	29	1.0%	16.0%
30313	27	27	0.9%	0.0%
30326	15	16	0.6%	6.7%
30097	29	32	1.1%	10.3%
30354	28	29	1.0%	3.6%
30303	28	29	1.0%	3.6%
30339	<10	<10	0.3%	-
30268	15	16	0.6%	6.7%
30307	10	11	0.4%	10.0%
30319	17	15	0.5%	-11.8%**
30336	<10	10	0.3%	-
30296	10	<10	0.3%	-
30363	<10	<10	0.2%	-
30301	<10	<10	0.1%	-
30345	<10	<10	0.1%	-
31131	<10	<10	0.1%	-
30023	<10	<10	0.1%	-
30080	<10	<10	0.1%	-
30135	<10	<10	0.0%	-



30138	<10	<10	0.0%	-
30139	<10	<10	0.0%	-
30321	<10	<10	0.1%	-
30340	<10	<10	0.1%	-
30341	<10	<10	0.2%	-
30358	<10	<10	0.0%	-
30374	13	15	0.5%	15.4%
30606	<10	<10	0.0%	-
31150	<10	<10	0.0%	-
Unknown	212	234	8.1%	-

\*\* Data cleaning (either during the detailed data collection that takes place at case interviews or during the geo-coding process) may lead to reassignment of few cases from one territory to another and these may appear as “decreases” when compared to the previous day’s count. These do not reflect errors in the data collection or analysis process but only reflect the minor day-to-day fluctuations in case counts that arise in an evolving public health database like COVID’s.

### CLINICAL CASCADE – FULTON COUNTY COVID-19 DIAGNOSES

