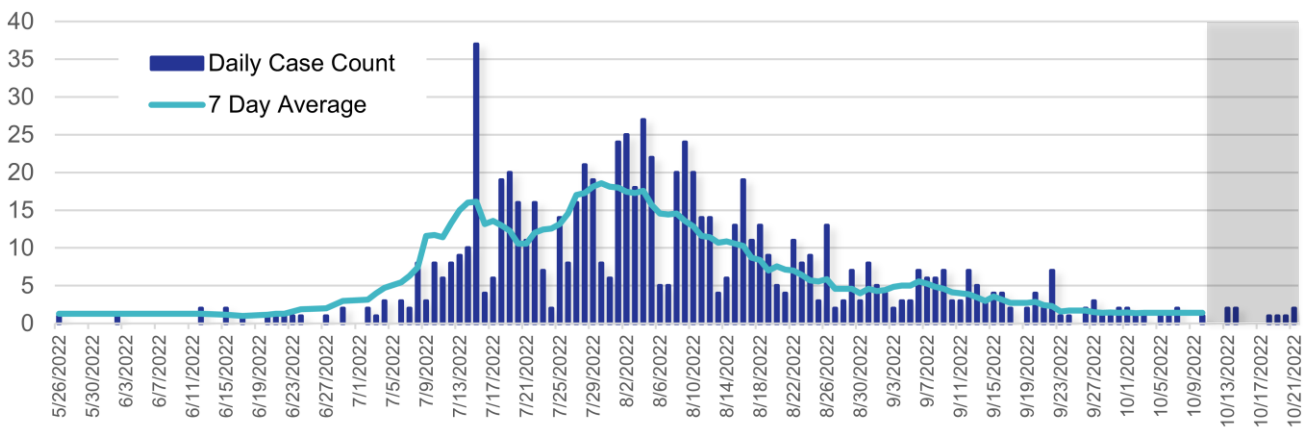


**MONKEYPOX IN FULTON COUNTY<sup>1</sup> – UPDATE AS OF 10/27/2022**

Georgia	Fulton County
1,899	795

**Fulton County accounts for 42% of the state’s cases**

**Fig. 1. Probable and Confirmed Cases of Monkeypox in Fulton County, GA**



<sup>1</sup>Data in this report reflect case counts of probable and confirmed Monkeypox cases in Fulton County residents. Probable cases are defined by the CDC as having no suspicion of other recent Orthopoxvirus exposure AND demonstration of the presence of Orthopoxvirus DNA by polymerase chain reaction of a clinical specimen OR Orthopoxvirus using immunohistochemical or electron microscopy testing methods OR demonstration of detectable levels of anti-orthopoxvirus IgM antibody during the period of 4 to 56 days after rash onset. Confirmed cases are defined by the CDC as having demonstration of the presence of Monkeypox virus DNA by polymerase chain reaction testing or next-Generation sequencing of a clinical specimen OR isolation of Monkeypox virus in culture from a clinical specimen. Date on x-axis refers to date of symptom onset. Data are subject to change.

## FULTON COUNTY CASE DEMOGRAPHICS

Table 1. Gender Identity	Percentage of Cases
Male	98.9%
Female	<1%
Transgender Male	-
Transgender Female	<1%
Unknown	-

Fig. 2. Gender Identity Distribution of Monkeypox Cases in Fulton County

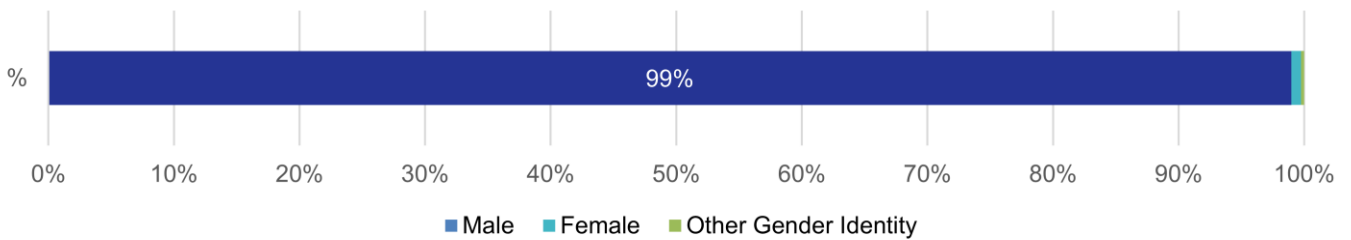


Table 2. Race	Percentage of Cases
White	15.3%
Black or African American	78.4%
Asian	<1%
American Indian or Alaskan Native	<1%
Other	3.9%
Unknown	1.4%

Fig. 3. Racial Distribution of Monkeypox Cases in Fulton County

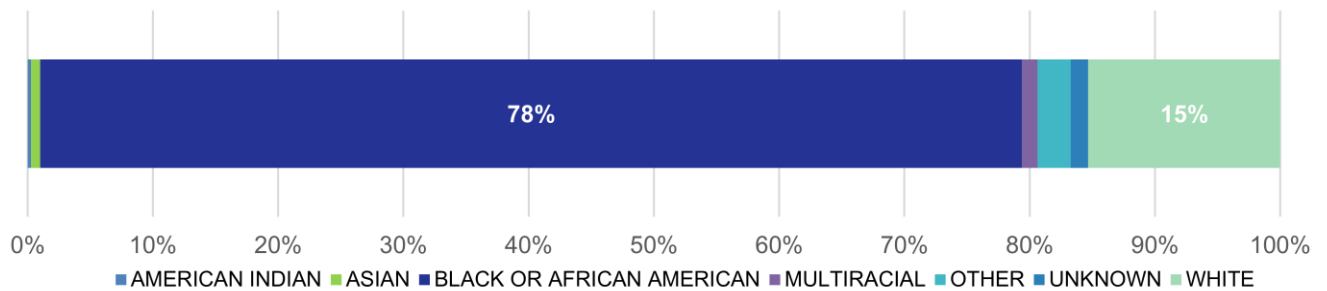


Table 3. Ethnicity	Percentage of Cases
Hispanic	5.8%
Non-Hispanic	91.7%
Unknown	2.5%

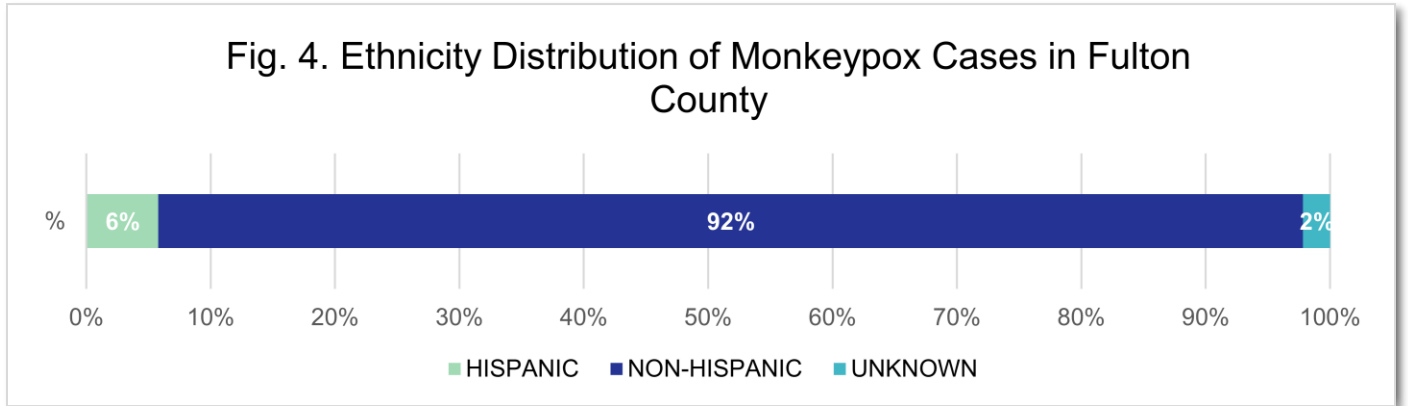
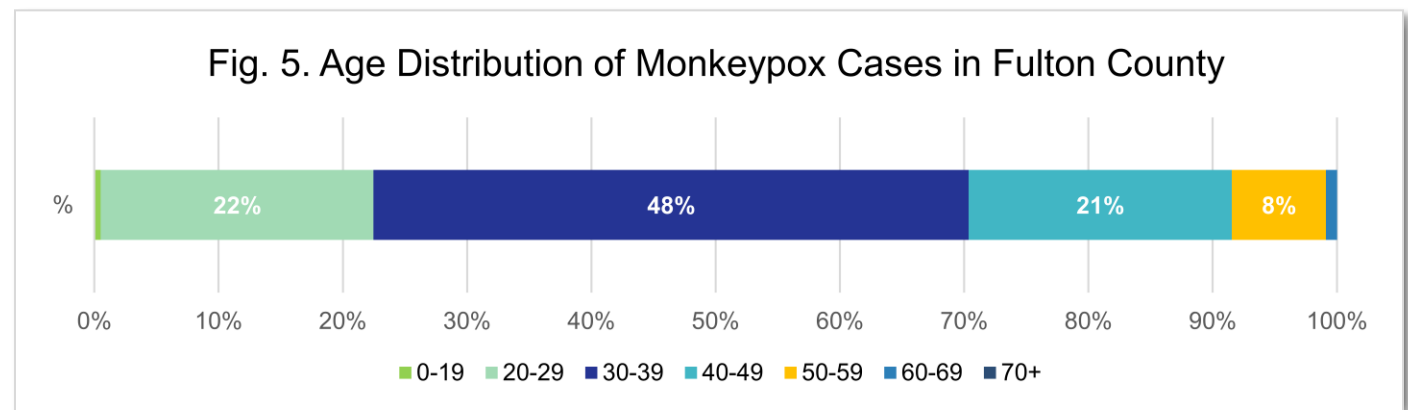


Table 4. Age Group	Percentage of Cases
0-19	<1%
20-29	21.8%
30-39	47.8%
40-49	21.3%
50-59	7.7%
60-69	<1%
70+	-



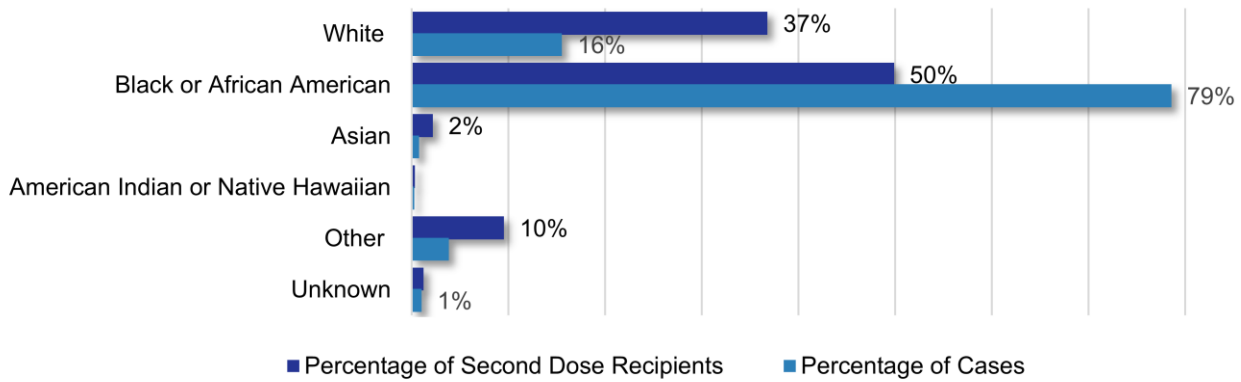
# FULTON COUNTY VACCINATION DEMOGRAPHICS<sup>1</sup>

FULTON COUNTY HAS ADMINISTERED 8,947 FIRST DOSES AND 5,424 SECOND DOSES FOR A TOTAL OF 14,371 DOSES

Table 5. Race	Percentage of Second Dose Recipients
White	36.8%
Black or African American	49.9%
Asian	2.2%
American Indian or Alaskan Native	<1%
Other	9.6%
Unknown	1.2%

Table 6. Ethnicity	Percentage of Second Dose Recipients
Hispanic	6.5%
Non-Hispanic	91.8%
Unknown	1.7%

Fig. 6. Distribution of Race in Monkeypox Cases and Second Dose Recipients in Fulton County



<sup>1</sup>Data as of 10/5/2022. Data are subject to change. Data reflect second doses administered in Fulton County and not necessarily vaccination among Fulton County residents. Data are provided by Georgia Department of Public Health.

## FULTON COUNTY MONKEYPOX CASE HIV STATUS

