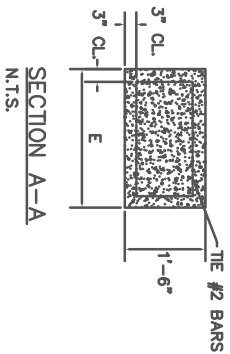
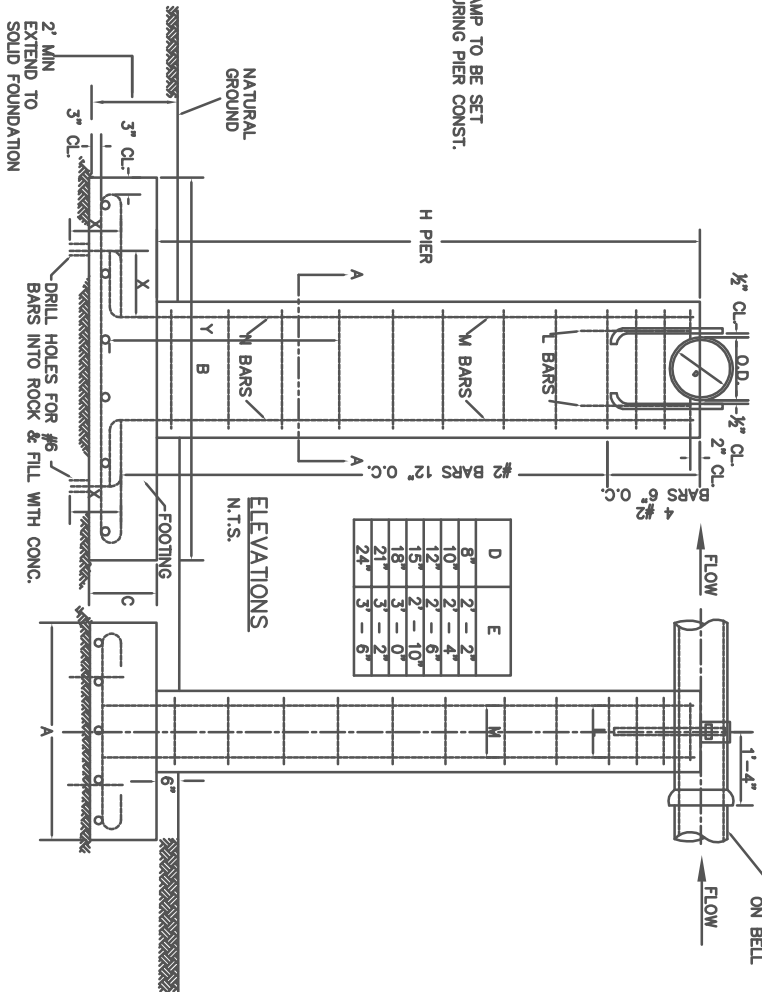
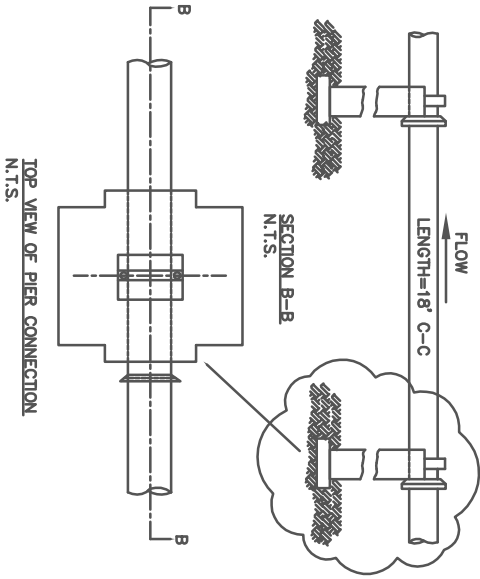
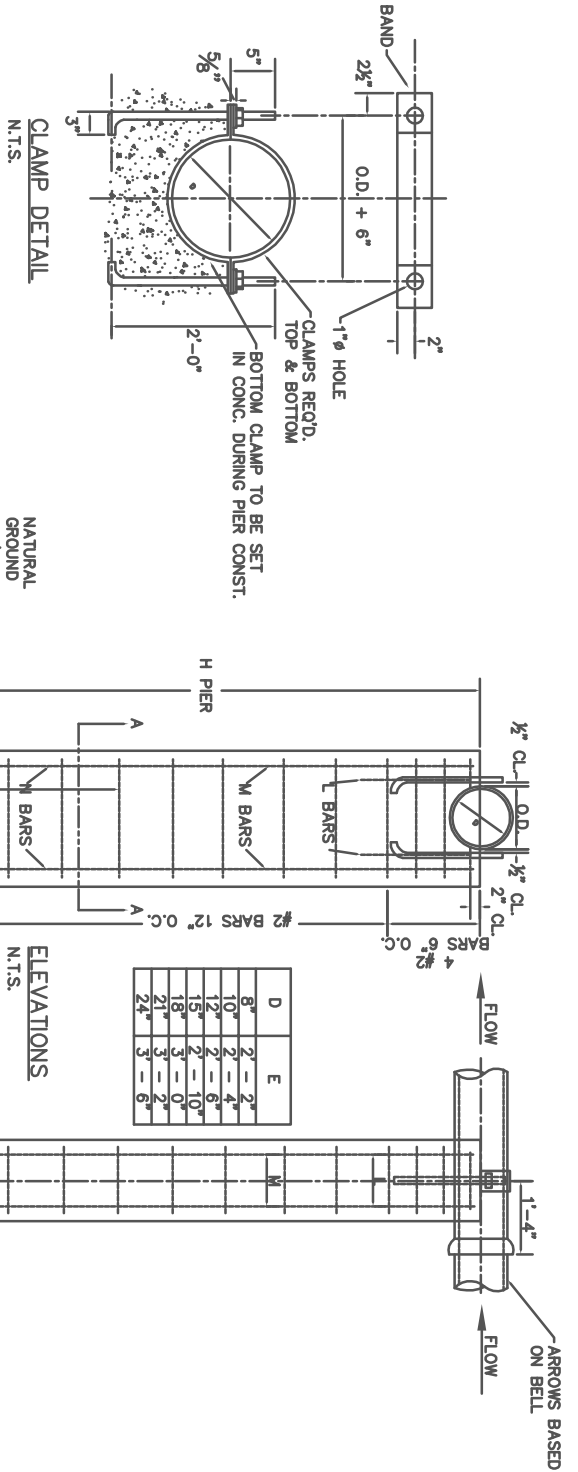


- NOTES:
1. PIER LOCATION DETERMINED BY ENGINEER
  2. CONCRETE TO BE 3,000 PSI
  3. UNDER UNSTABLE CONDITIONS, ENGINEER PLANS FOR PIER DESIGN MUST BE SUBMITTED TO & APPROVED BY THE PUBLIC WORKS DEPARTMENT
  4. PLACE PIERS AT EVERY BELL
  5. ENGINEER TO SUBMIT PIER DESIGN
  6. STEEL REINFORCEMENT TO BE A.S.T.M DESIGNATION A-15 - 54T UNLESS OTHERWISE SPECIFIED, BENDS IN BARS TO CONFORM TO A.C.I. STANDARD.
  7. PRECAST PIERS ARE ALLOWED PER PERMISSION OF COUNTY ENGINEER.



FULTON COUNTY STANDARD DETAIL 403  
CONCRETE PIER AND FOOTING DETAIL

| DATE | REVISIONS | DATE | REVISIONS |
|------|-----------|------|-----------|
| 8/08 | NRR       |      |           |
|      |           |      |           |
|      |           |      |           |
|      |           |      |           |
|      |           |      |           |
|      |           |      |           |
|      |           |      |           |
|      |           |      |           |
|      |           |      |           |
|      |           |      |           |

|                   |               |
|-------------------|---------------|
| DGS/DRN/CHKD: REB | APPROVED: REW |
| DATE: 12-2-05     |               |



FULTON COUNTY PUBLIC WORKS  
141 PRYOR ST. ATLANTA, GA. 30303  
404-612-7400 FAX: 404-224-0498

DRAWING NO. 403