

Illicit Discharge Detection & Elimination

Fulton County Water Resources
Stormwater

IDDE

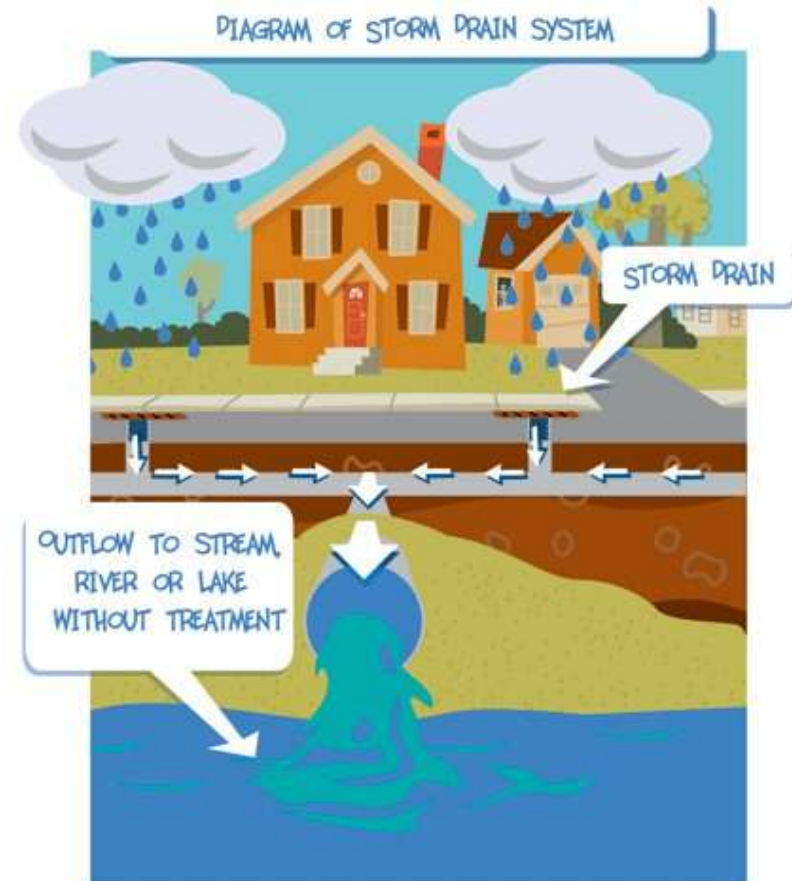
We appreciate your help in keeping our waterways safe from illicit discharges.



Indicators of illicit discharges include water flow from a stormwater outfall (storm drain) with Odor, Color, Turbidity, and/or Floatables during periods of dry weather.

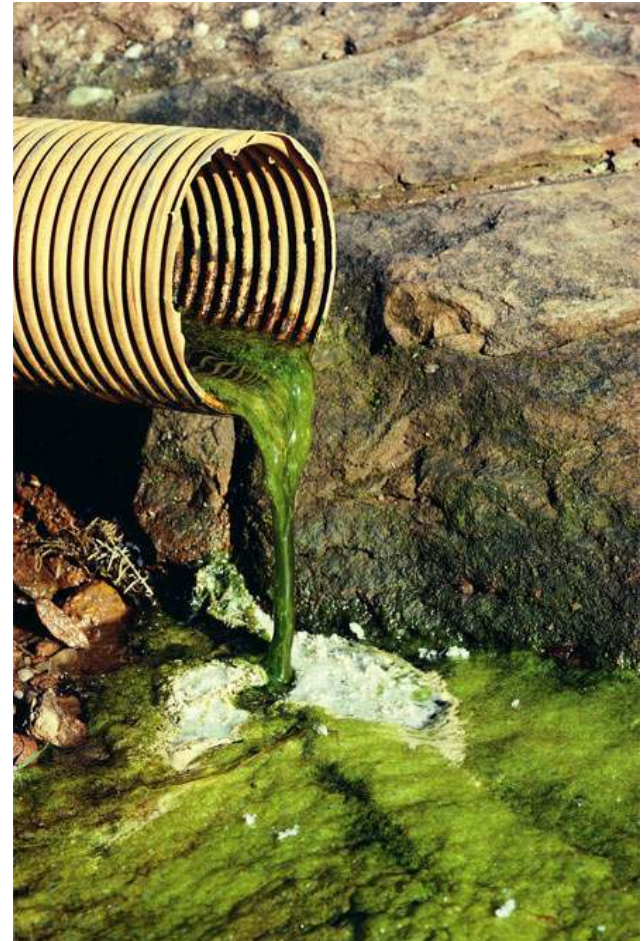
What's the Point?

- Maintain and improve water quality in our streams, enhancing their designated uses, including swimming, boating, fishing, etc.
- Protect the drinking water supply for Fulton County and our downstream neighbors.
- We are responsible under our federally issued stormwater discharge permits to identify and eliminate illicit discharges.



What Are You Looking For?

- Basically anything that doesn't belong in a stream.
- Anything out of the ordinary
- Best time to look is during periods of dry weather (less than a total 1/10 inch of rainfall in the last three days)



ODOR

- Check for odors coming from an outfall
- Any odor that doesn't belong, even if it is a pleasant smell



COLOR

- Does the discharge have color?
- Look for plumes of color downstream from the outfall



TURBIDITY

- Turbidity is the measure of the cloudiness of the water
- Look for cloudiness in the plunge pool below outfall
- Look for cloudy plumes downstream of outfall



FLOATABLES

- Are there any floating materials in the discharge or plunge pool?
- Examples include sewage, oil sheen/film, and suds
- Trash and debris are not considered indicators



A Note About Suds and Sheens



Pollution vs. Natural

Some foam is naturally occurring:

- Does it appear bright white (detergents) or brown-ish (natural)?

Some sheen is natural:

- Does it crack (natural) or “glob” (oil) together when stirred?

How to Report a Problem

- stormwater@fultoncountyga.gov
- 404-612-IDDE (4333)

Upon receiving a report the Stormwater Unit will:

- Investigate all reports.
- Id source and offender of pollutant source.
- Approach them first to correct the problem.
- Take enforcement options as a last resort.
- Conduct laboratory samples of the water, if necessary.