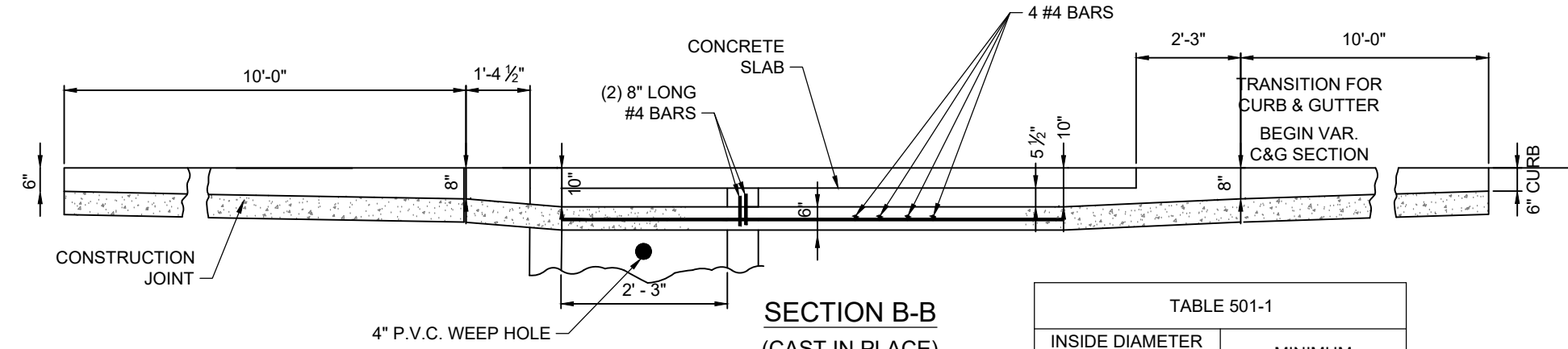
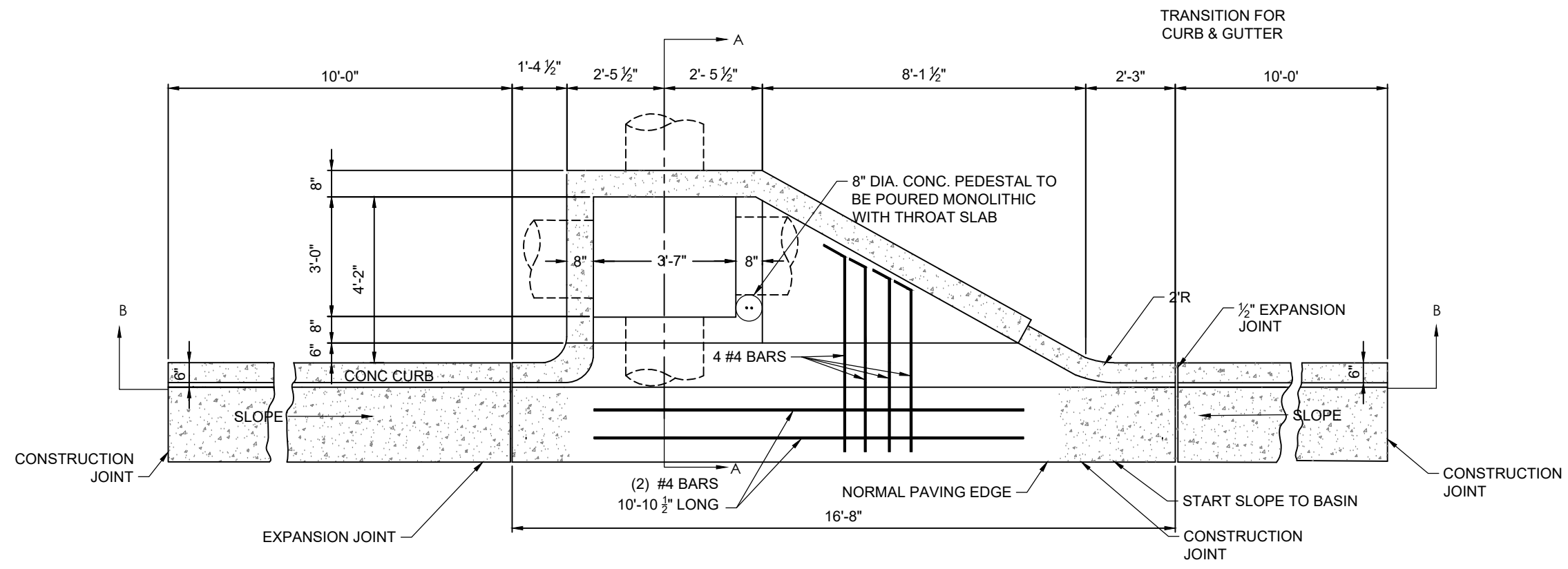


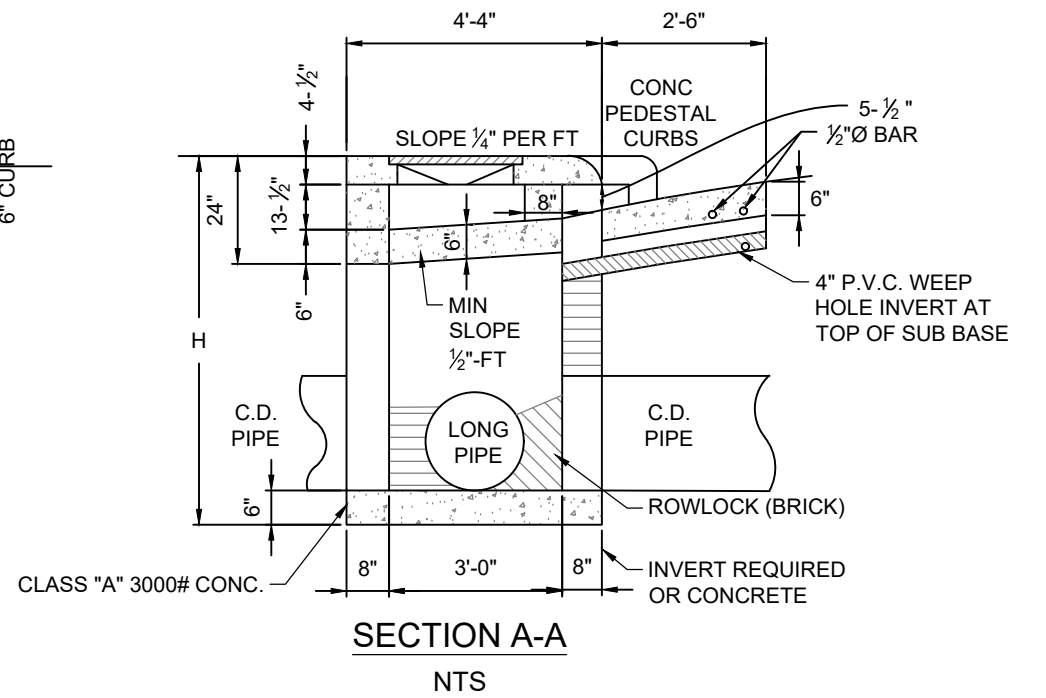
NOTES:

1. FOR ALL CATCH BASINS, 1/2" EXPANSION JOINT MATERIAL SHALL BE PLACED AROUND THE CATCH BASIN WHERE SIDEWALK OR MEDIAN PAVEMENT IS PLACED ADJACENT TO THE CATCH BASIN IN ANY SUBDIVISION THE OPTION IS TO USE EITHER ALL ONLINE CATCH BASINS OR ALL ONE FOOT OFFSET CATCH BASINS.
2. CONCRETE STRENGTH TEST REQUIRED FOR ALL POURED IN PLACE CONCRETE.
3. ALL POURED-IN-PLACE CONC. TO BE CLASS "A" 3000 P.S.I.
4. PLASTIC COATED STEEL STEPS ARE REQUIRED IN ALL CATCH BASINS.
5. FOR ADDITIONAL DETAILS SEE STANDARD #104.



SECTION B-B
(CAST IN PLACE)
NTS

INSIDE DIAMETER OF PIPE (IN.)	MINIMUM "H"
18	4' - 10"
24	5' - 6"
30	6' - 2"
36	6' - 10"
42	7' - 4"
48	8' - 0"
54	8' - 6"
60	9' - 2"



SECTION A-A
NTS

FULTON COUNTY STANDARD DETAIL 501
CATCH BASIN SINGLEWING
ONE FOOT OFFSET (FACE OF CURB)

DATE	REVISIONS	DATE	REVISIONS
M/Y	XXX	M/Y	XXX

DGS/DRN/CHKD: XXX
APPROVED: XXX
DATE: XX-X-XX



FULTON COUNTY PUBLIC WORKS
141 PRYOR ST. ATLANTA, GA. 30303
404-612-7400 FAX: 404-224-0498

DRAWING NO.
501

95% SUBMITTAL