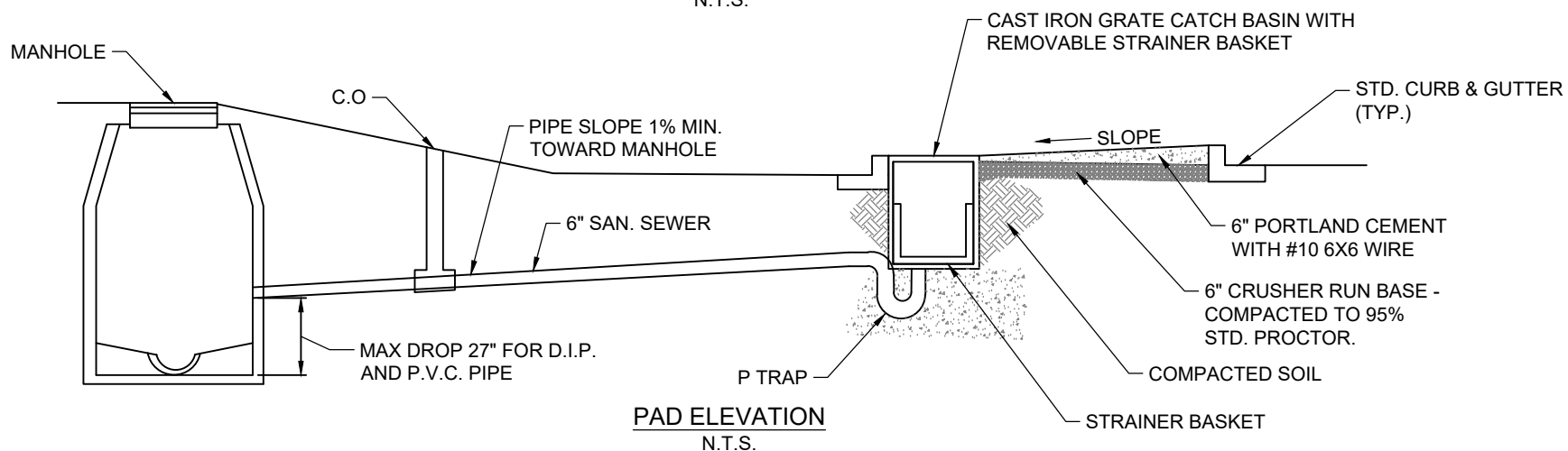
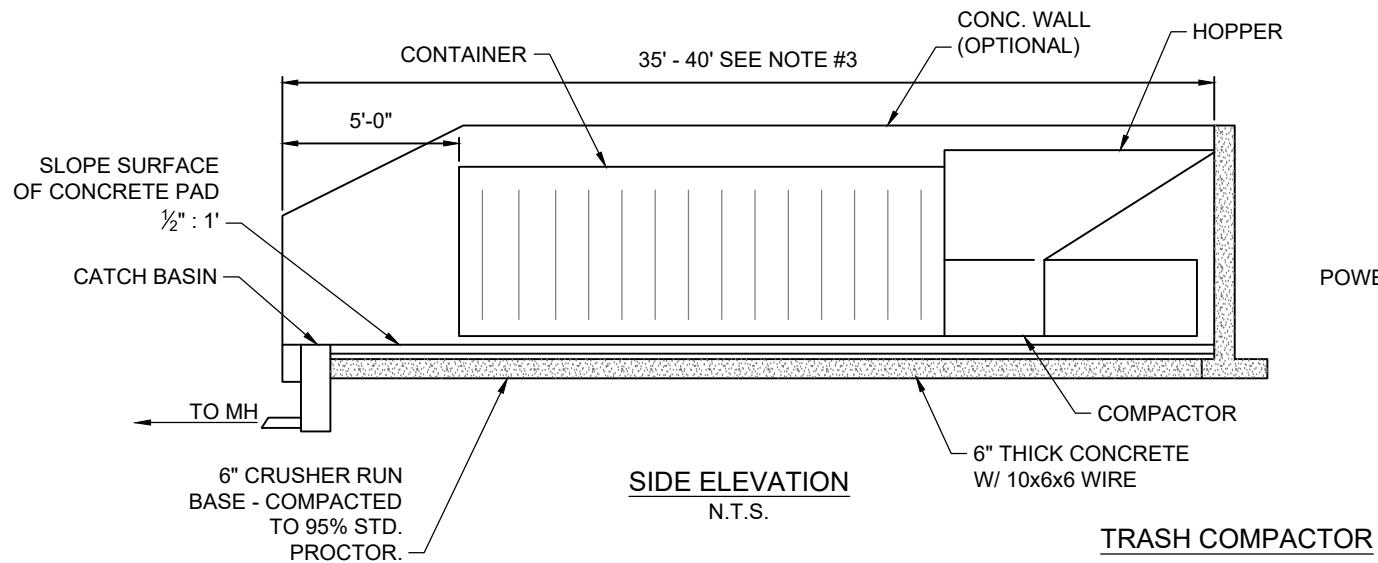


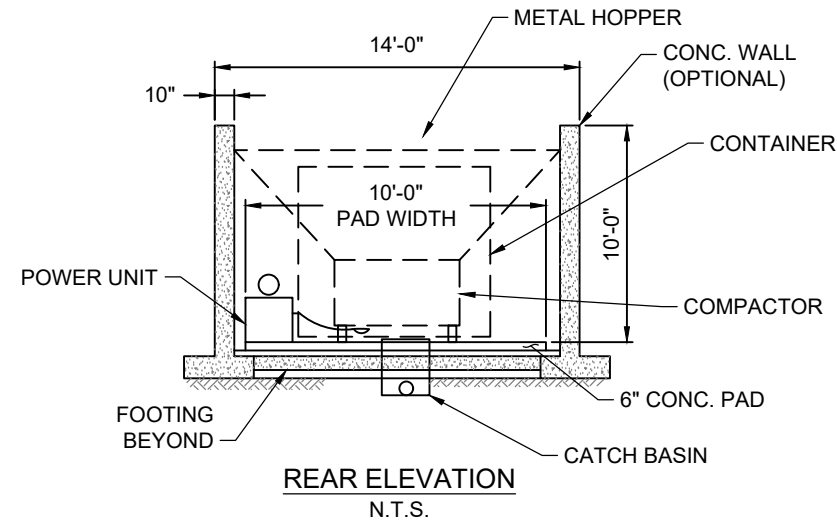
PLAN VIEW
N.T.S.



PAD ELEVATION
N.T.S.



SIDE ELEVATION
N.T.S.



REAR ELEVATION
N.T.S.

TRASH COMPACTOR

NOTE:

1. WATER BIBB REQUIRED WITHIN 50' OF PAD FOR CLEANSING.
2. APPROVAL FROM HEALTH DEPT. REQUIRED.
3. COMPACTOR PAD TO BE 10' - 0" WIDE AND A LENGTH OF 5' - 0" GREATER THAN THE COMBINED LENGTH OF THE COMPACTOR AND CONTAINER.
4. RUBBER BOOT REQUIRED FOR P.V.C. PIPE, (MANHOLE CONNECTOR) WATER BIBB TO HAVE BACK FLOW PREVENTER.
5. DO NOT CONNECT DRAIN TO GREASE TRAP. SURFACE WATER RUNOFF MUST BE SLOPED AWAY FROM PAD.
6. DO NOT ALLOW STORM WATER RUNOFF ON PAD.
7. 4.5 FOOT CHAIN LINK FENCE WITH 3-4 FOOT ACCESS GATE IS REQUIRED AROUND ALL COMPACTORS AND HOPPERS.
8. UNLESS OTHERWISE APPROVED, TRASH COMPACTOR AND DUMPSTER DRAIN TO HAVE A DEDICATED LINE TO MANHOLE.
9. ENCLOSURE IS REQUIRED. MATERIAL BASED ON PLAN DESIGN.

95% SUBMITTAL

FULTON COUNTY STANDARD DETAIL 703
TRASH COMPACTOR AND DUMPSTER PAD
DETAILS

DATE	REVISIONS	DATE	REVISIONS
M/Y	XXX	M/Y	XXX

DGS/DRN/CHKD: XXX
APPROVED: XXX
DATE: XX-X-XX



FULTON COUNTY PUBLIC WORKS
141 PRYOR ST. ATLANTA, GA. 30303
404-612-7400 FAX: 404-224-0498

DRAWING NO.
703