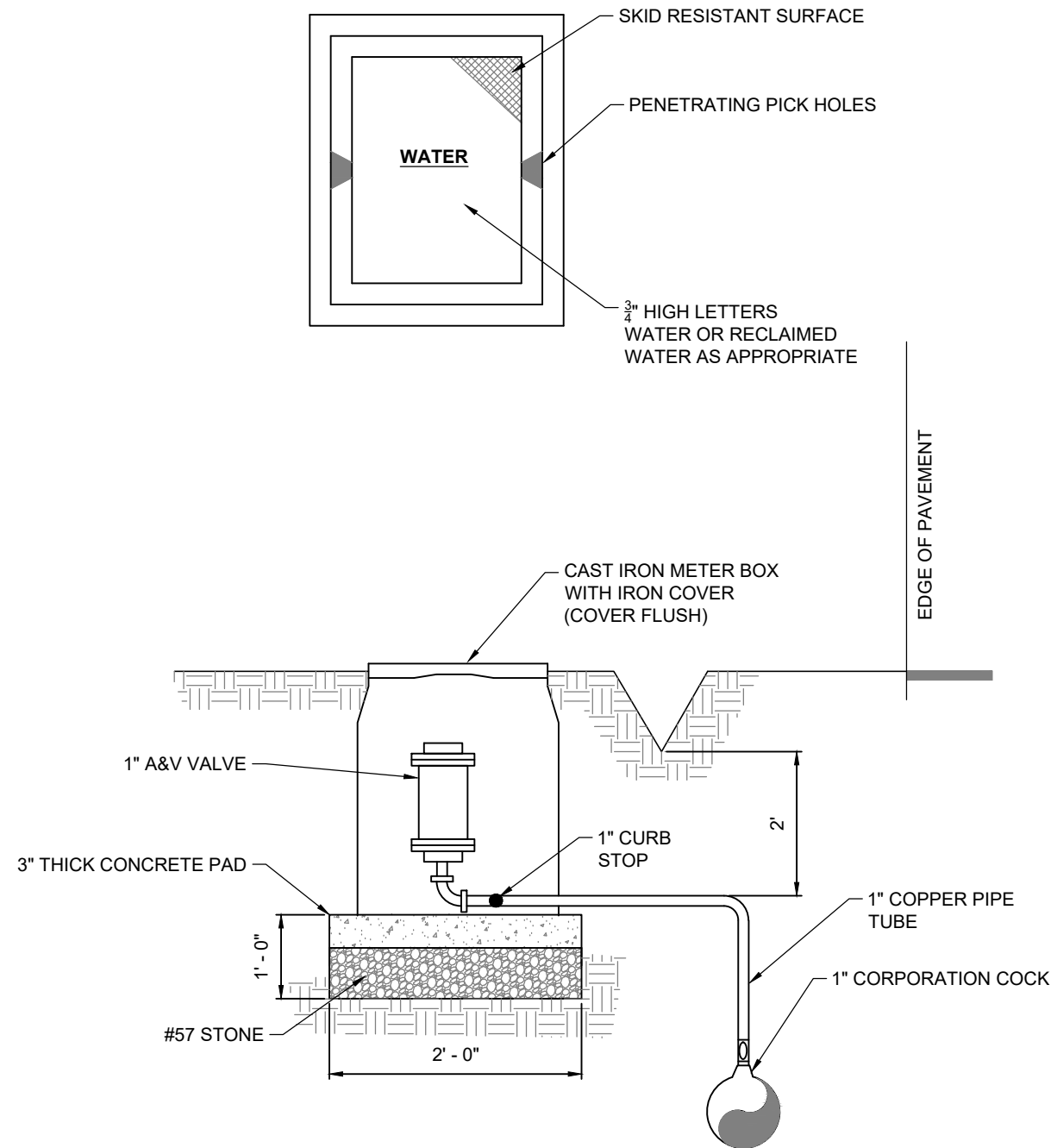


NOTES:

1. VALVE MARKER REQUIRED.
2. A&V VALVE AND COPPER SHALL BE SIZED IN ACCORDANCE WITH VALVE MANUFACTURER'S RECOMMENDATIONS.
3. METER BOX SHALL BE CDR 10 X 1 5HC OR APPROVED EQUAL.
4. A&v VALVE SHALL BE VENT-O-MAY SERIES RBX OR EQUAL.



95% SUBMITTAL

FULTON COUNTY STANDARD DETAIL 817

A & V RELEASE VALVE ASSEMBLY
1" OR 2"

DATE	REVISIONS	DATE	REVISIONS
M/Y	XXX	M/Y	XXX

DGS/DRN/CHKD: XXX

APPROVED: XXX

DATE: XX-X-XX



FULTON COUNTY PUBLIC WORKS
141 PRYOR ST. ATLANTA, GA. 30303
404-612-7400 FAX: 404-224-0498

DRAWING NO.

817