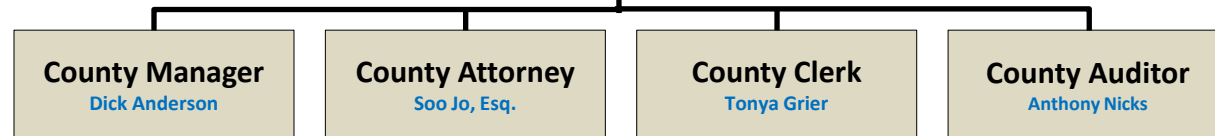


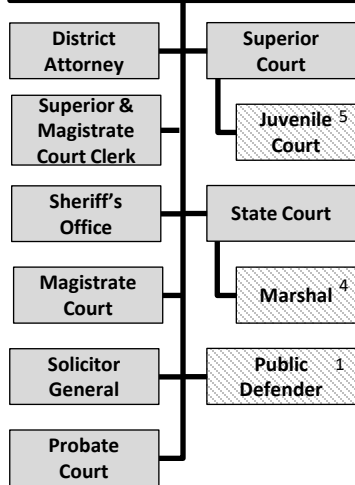


# CITIZENS OF FULTON COUNTY

## BOARD OF COMMISSIONERS



### JUSTICE AGENCIES



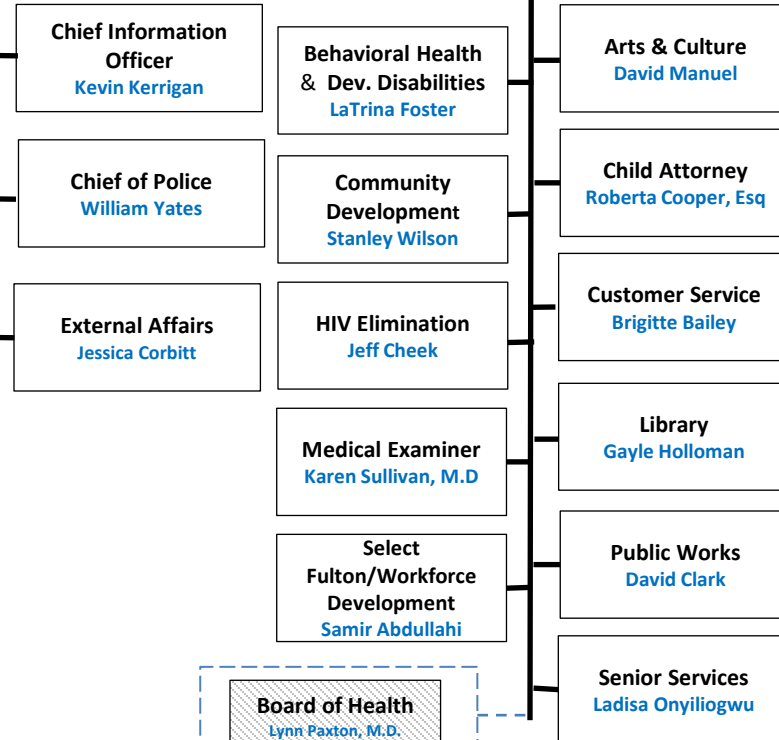
### OTHER AGENCIES

Tax Commissioner  
Dr. Arthur E. Ferdinand

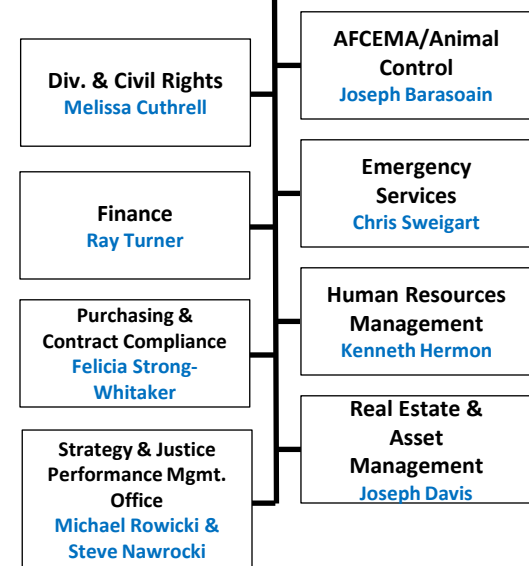
Tax Assessor 3  
Roderick Conley

Reg. & Elections 6  
Nadine Williams

### Chief Operating Officer Pamela Roshell



### Chief Financial Officer Sharon Whitmore



### KEY

Elected Official Agency  
BOC Appointee  
County Mgr. Exec. Team  
County Department  
Appointed Official Agency

Indicates responsibility for strategic alignment

1. Appointed by the GA Public Defender Council
2. Appointed by the Board of Health
3. Appointed by the Board of Assessors
4. Appointed by the State Court
5. Appointed by the Superior Court
6. Appointed by the Board of Registration and Elections